

Lewis County, Washington
Shoreline Master Program

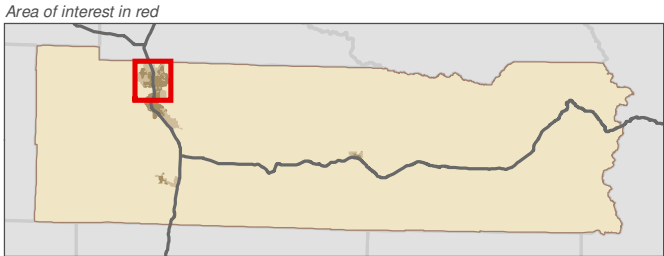
Map 6C - Water-Oriented Land Use
Figure: Centralia

Date: 6/3/2014

- Water Oriented Uses**

 - Non-Commercial Forest
 - Parks/Open Space
 - Retail Trade - Eating and Drinking
 - Recreational Activities
 - Hotels/Motels
 - Resorts and Group Camping
 - Fishing
 - Mining
- SMA Rivers & Streams
 - SMA Lakes
 - Highways
 - Railroads
 - Parcels
 - SMA Jurisdiction
 - City
 - UGA

0 0.275 0.55 Miles 1:38,000



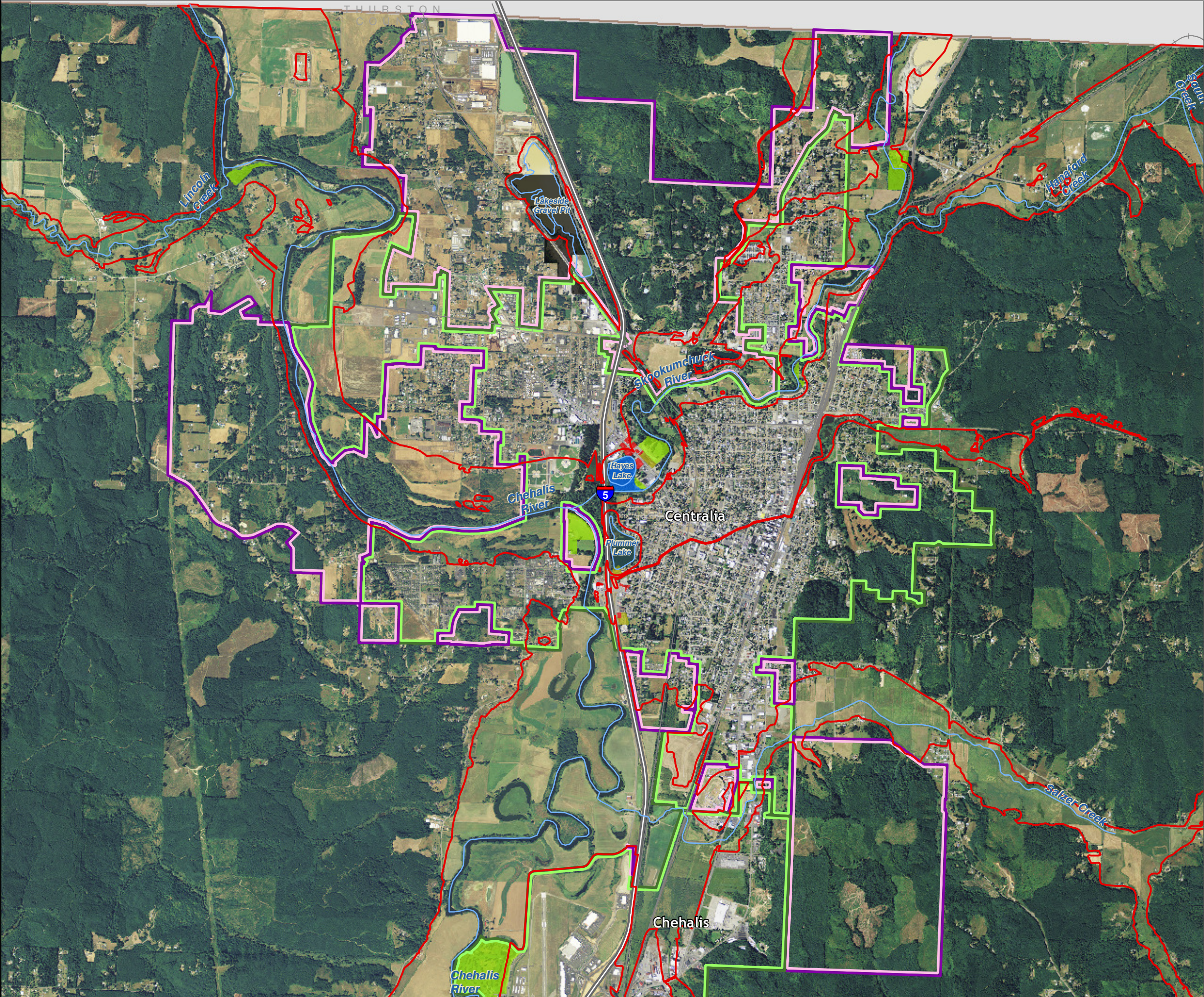
Data: Lewis County, USFWS NWI, FEMA, WA DNR, WSDOT, NRCS NAIP

Shoreline jurisdiction boundaries depicted on this map are approximate. They have not been formally delineated or surveyed and are intended for planning purposes only. Additional site-specific evaluation may be needed to confirm/verify information shown on this map.

Lewis County Coalition



City of Morton City of Winlock



Lewis County, Washington
Shoreline Master Program

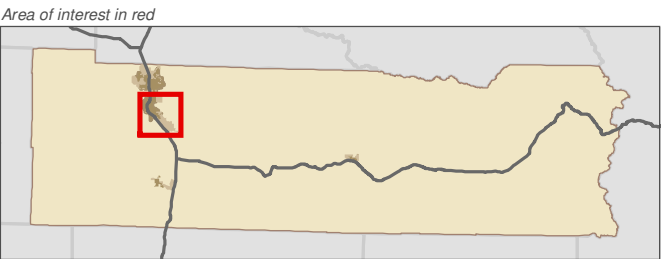
Map 6C - Water-Oriented Land Use
Figure: Chehalis

Date: 6/3/2014

- Water Oriented Uses**

 - Non-Commercial Forest
 - Parks/Open Space
 - Retail Trade - Eating and Drinking
 - Recreational Activities
 - Hotels/Motels
 - Resorts and Group Camping
 - Fishing
 - Mining
- SMA Rivers & Streams
 - SMA Lakes
 - Highways
 - Railroads
 - Parcels
 - SMA Jurisdiction
 - City
 - UGA

0 0.25 0.5 Miles 1:39,000



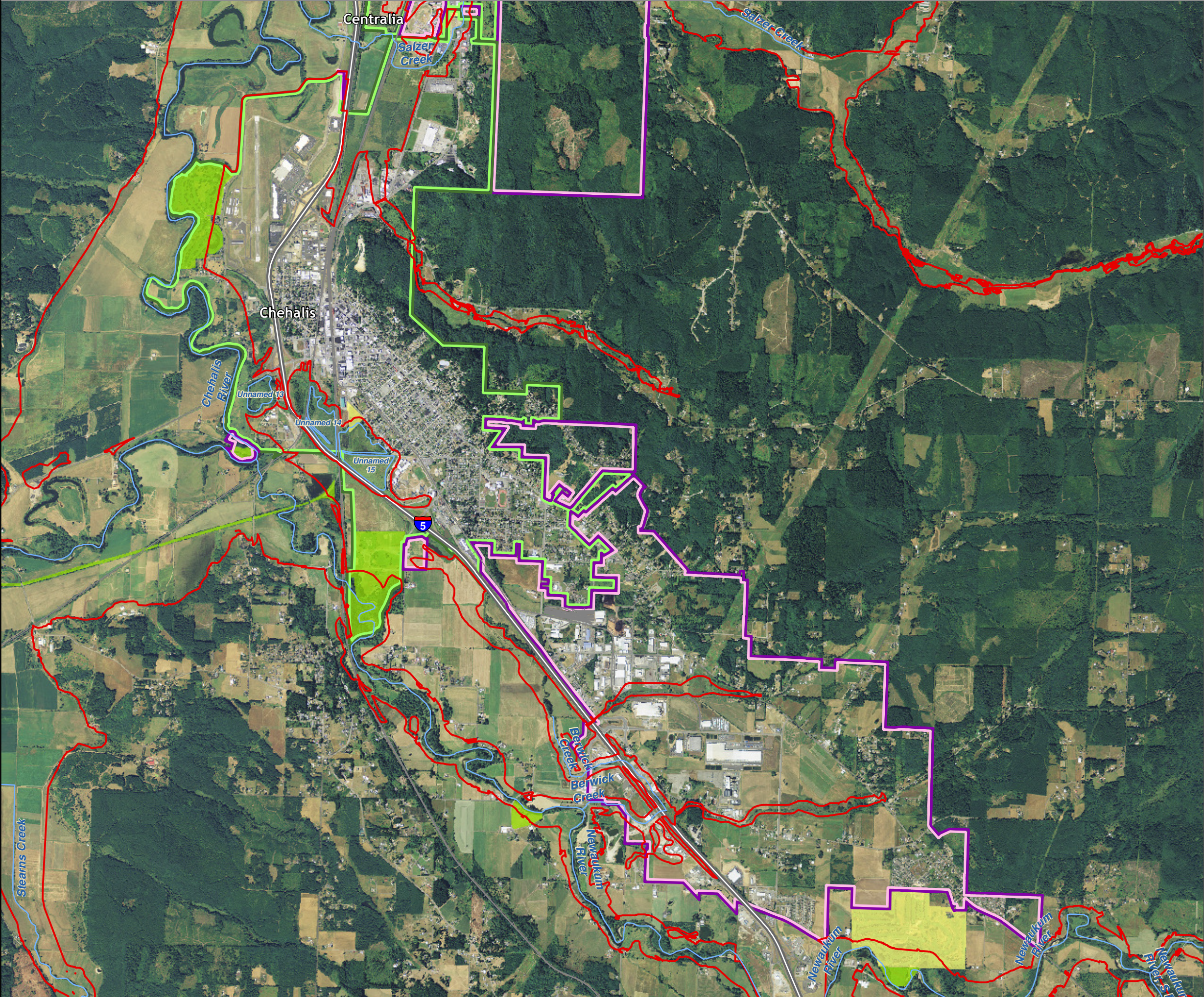
Data: Lewis County, USFWS NWI, FEMA, WA DNR, WSDOT, NRCS NAIP

Shoreline jurisdiction boundaries depicted on this map are approximate. They have not been formally delineated or surveyed and are intended for planning purposes only. Additional site-specific evaluation may be needed to confirm/verify information shown on this map.

Lewis County Coalition



City of Morton City of Winlock



Lewis County, Washington
Shoreline Master Program

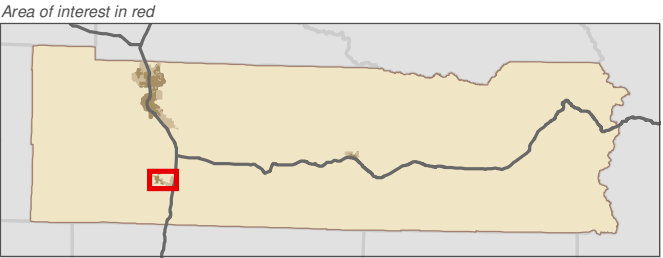
Map 6C - Water-Oriented Land Use
Figure: Winlock

Date: 6/3/2014

- Water Oriented Uses**

 - Non-Commercial Forest
 - Parks/Open Space
 - Retail Trade - Eating and Drinking
 - Recreational Activities
 - Hotels/Motels
 - Resorts and Group Camping
 - Fishing
 - Mining
- SMA Rivers & Streams
 - SMA Lakes
 - Highways
 - Railroads
 - Parcels
 - SMA Jurisdiction
 - City
 - UGA

0 0.125 0.25 Miles 1:21,000



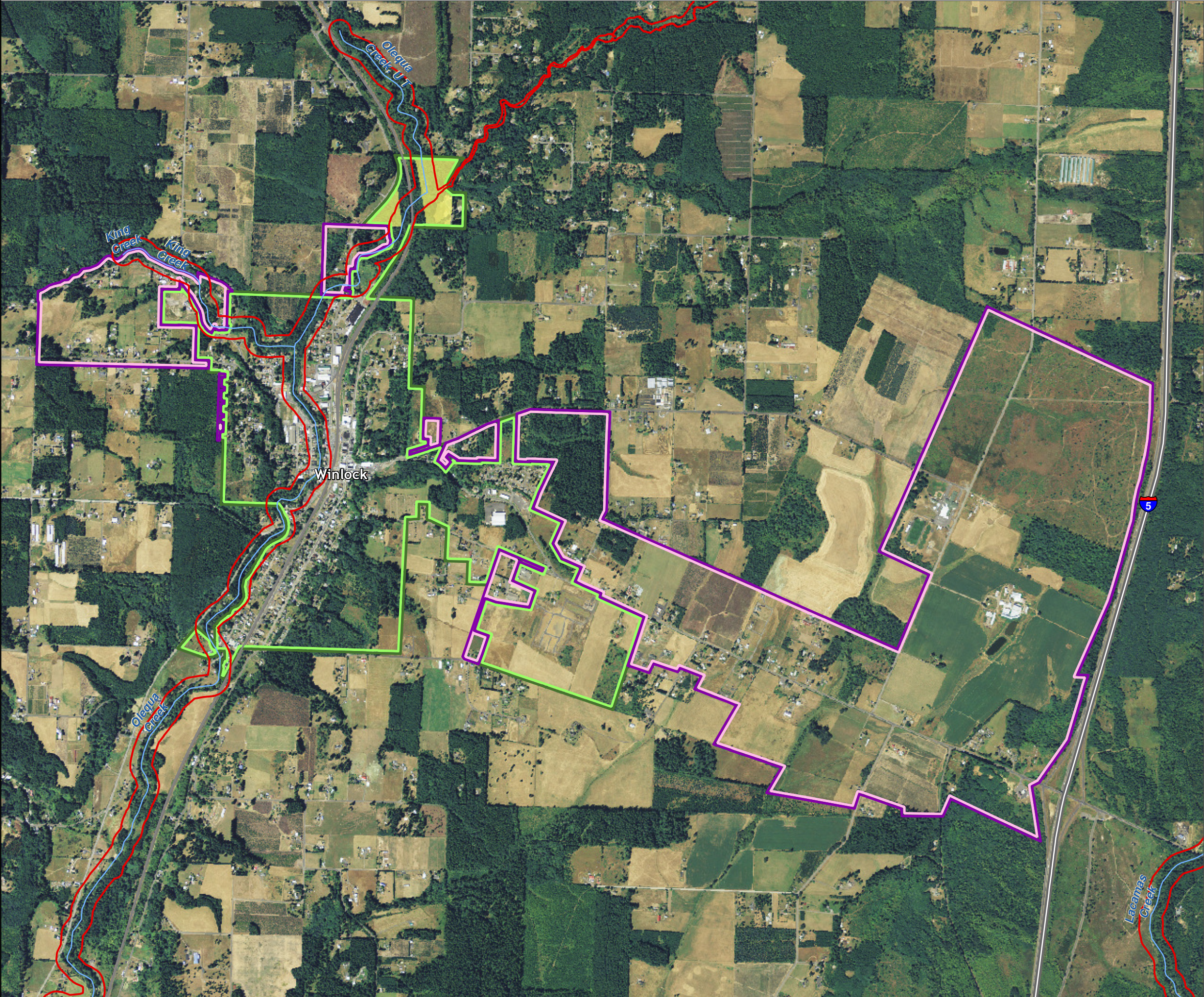
Data: Lewis County, USFWS NWI, FEMA, WA DNR, WSDOT, NRCS NAIP

Shoreline jurisdiction boundaries depicted on this map are approximate. They have not been formally delineated or surveyed and are intended for planning purposes only. Additional site-specific evaluation may be needed to confirm/verify information shown on this map.

Lewis County Coalition



City of Morton City of Winlock



Lewis County, Washington
Shoreline Master Program

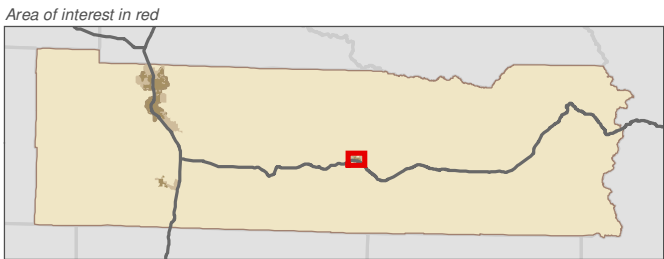
Map 6C - Water-Oriented Land Use
Figure: Morton

Date: 6/3/2014

- Water Oriented Uses**

 - Non-Commercial Forest
 - Parks/Open Space
 - Retail Trade - Eating and Drinking
 - Recreational Activities
 - Hotels/Motels
 - Resorts and Group Camping
 - Fishing
 - Mining
- SMA Rivers & Streams
 - SMA Lakes
 - Highways
 - Railroads
 - Parcels
 - SMA Jurisdiction
 - City
 - UGA

0 0.075 0.15 Miles 1:13,000



Data: Lewis County, USFWS NWI, FEMA, WA DNR, WSDOT, NRCS NAIP

Shoreline jurisdiction boundaries depicted on this map are approximate. They have not been formally delineated or surveyed and are intended for planning purposes only. Additional site-specific evaluation may be needed to confirm/verify information shown on this map.

Lewis County Coalition



City of Morton City of Winlock

