

Lewis County, Washington
Shoreline Master Program

Map 6D - Water-Oriented Land Use

Figure 1

Date: 6/3/2014

Water-Oriented Uses

- Non-Commercial Forest

Parks/Open Space

Retail Trade - Eating and Drinking

Recreational Activities

Hotels/Motels

Resorts and Group Camping

Fishing

Mining
- SMA Rivers & Streams

SMA Lakes

Highways

SMA Jurisdiction

City

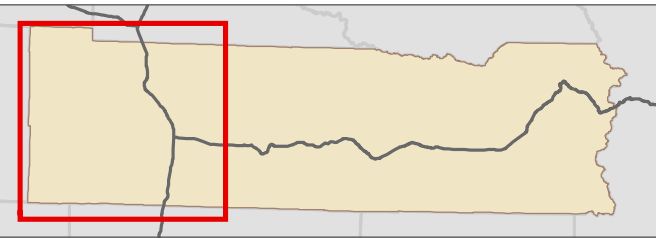
UGA

0 1.5 3 Miles

1:188,000



Area of interest in red



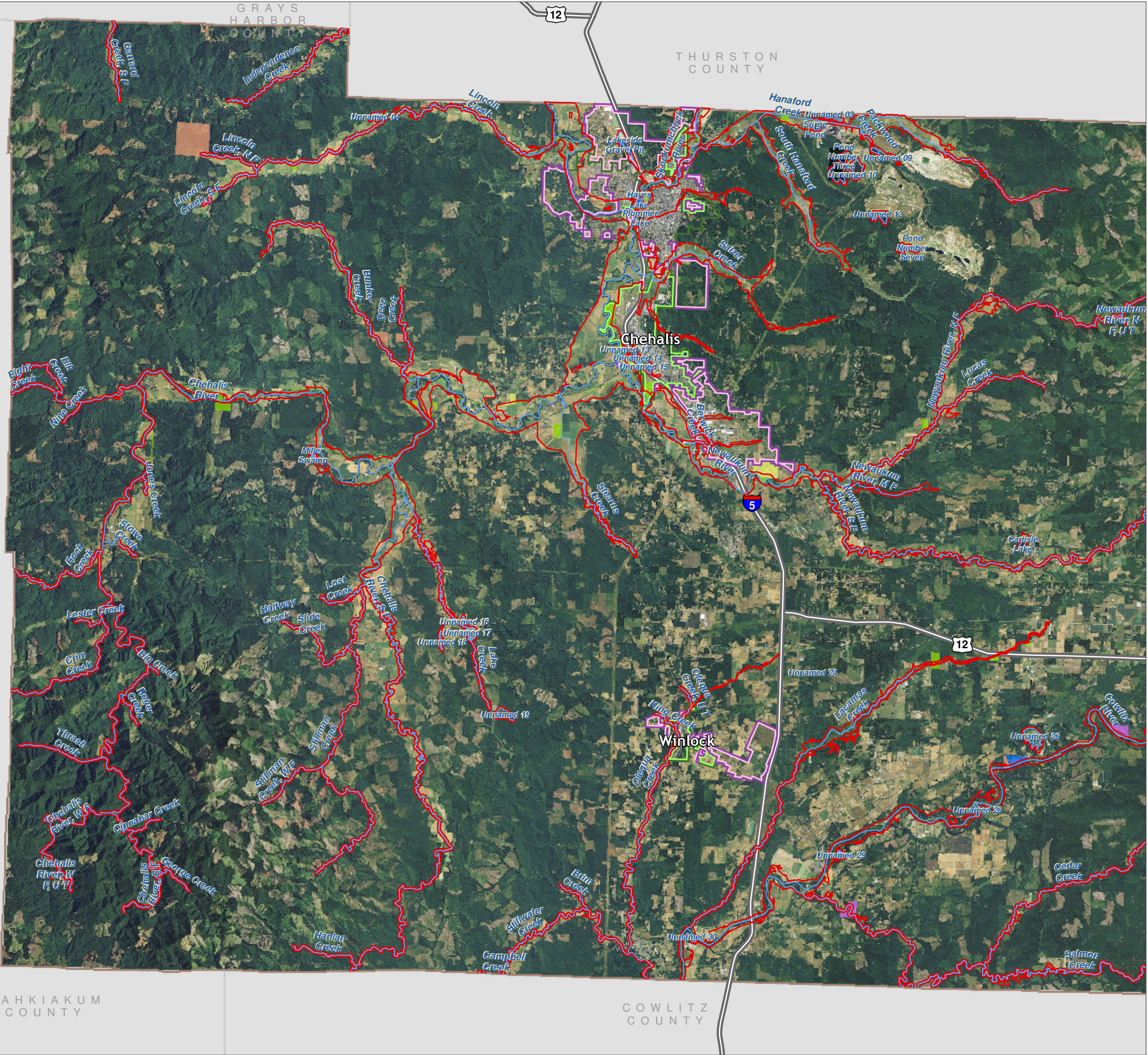
Data: Lewis County, USFWS NWI, FEMA, WA DNR, WSDOT, NRCS NAIP

Shoreline jurisdiction boundaries depicted on this map are approximate. They have not been formally delineated or surveyed and are intended for planning purposes only. Additional site-specific evaluation may be needed to confirm/verify information shown on this map.

Lewis County Coalition



City of Morton City of Winlock



Lewis County, Washington
Shoreline Master Program

Map 6D - Water-Oriented Land Use

Figure 2

Date: 6/3/2014

Water-Oriented Uses

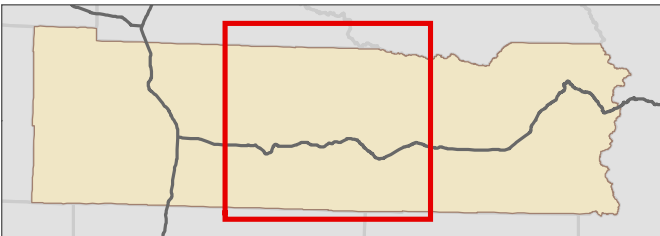
- Non-Commercial Forest
- Parks/Open Space
- Retail Trade - Eating and Drinking
- Recreational Activities
- Hotels/Motels
- Resorts and Group Camping
- Fishing
- Mining
- SMA Rivers & Streams
- SMA Lakes
- Highways
- SMA Jurisdiction
- City
- UGA

0 1.5 3 Miles

1:188,000



Area of interest in red



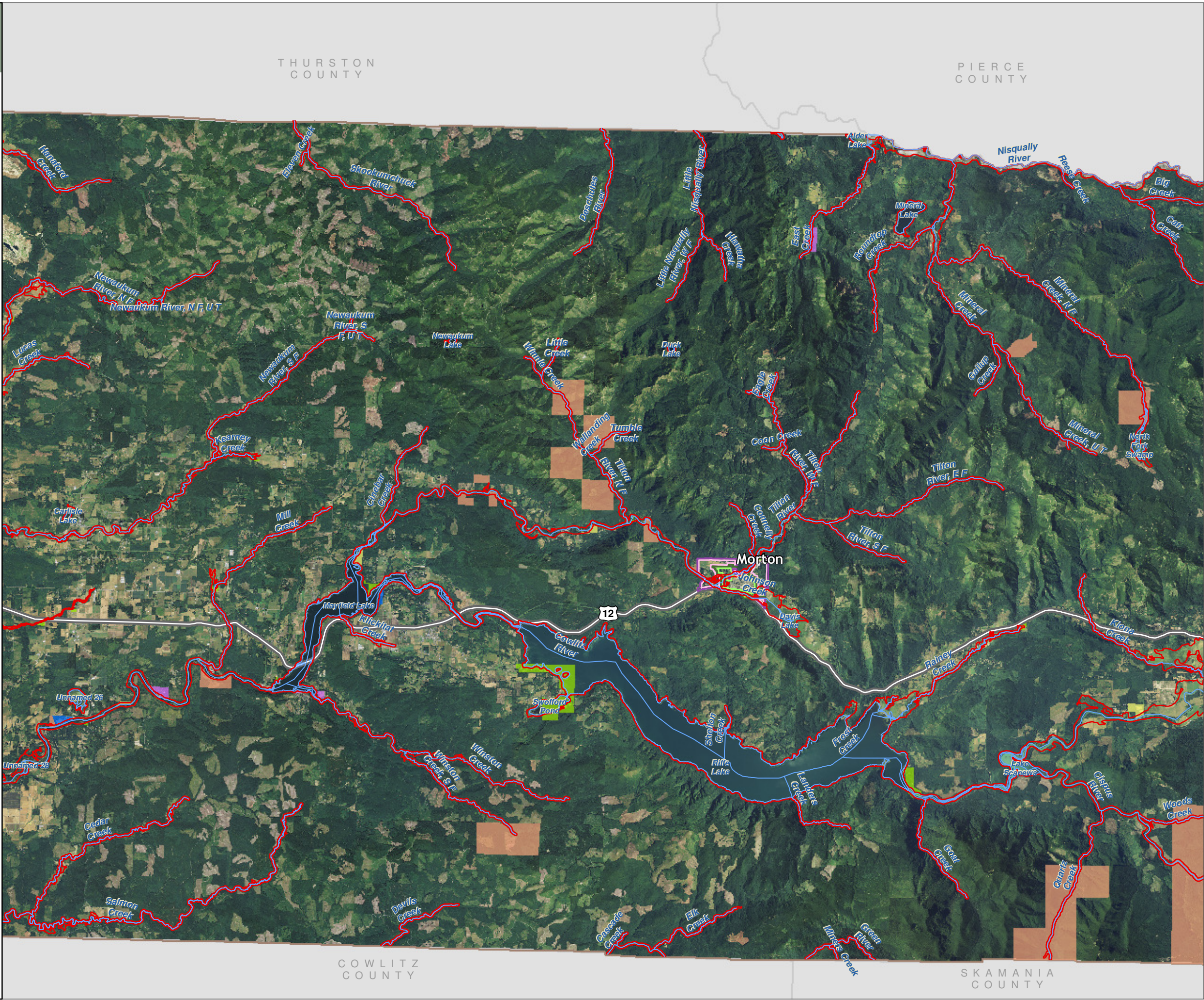
Data: Lewis County, USFWS NWI, FEMA, WA DNR, WSDOT, NRCS NAIP

Shoreline jurisdiction boundaries depicted on this map are approximate. They have not been formally delineated or surveyed and are intended for planning purposes only. Additional site-specific evaluation may be needed to confirm/verify information shown on this map.

Lewis County Coalition



City of Morton City of Winlock



Lewis County, Washington
Shoreline Master Program

Map 6D - Water-Oriented Land Use

Figure 3

Date: 6/3/2014

Water-Oriented Uses

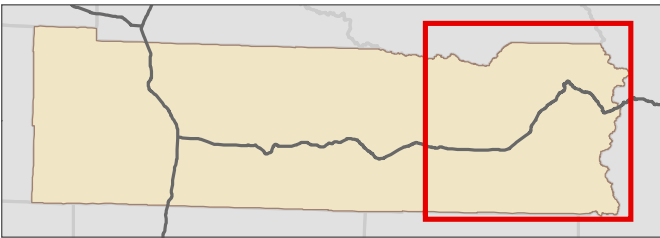
- Non-Commercial Forest
- Parks/Open Space
- Retail Trade - Eating and Drinking
- Recreational Activities
- Hotels/Motels
- Resorts and Group Camping
- Fishing
- Mining
- SMA Rivers & Streams
- SMA Lakes
- Highways
- SMA Jurisdiction
- City
- UGA

0 1.5 3 Miles

1:188,000



Area of interest in red



Data: Lewis County, USFWS NWI, FEMA, WA DNR, WSDOT, NRCS NAIP

Shoreline jurisdiction boundaries depicted on this map are approximate. They have not been formally delineated or surveyed and are intended for planning purposes only. Additional site-specific evaluation may be needed to confirm/verify information shown on this map.

Lewis County Coalition



City of Morton City of Winlock

