

Lewis County, Washington
Shoreline Master Program

Map 7D - Sewer Systems

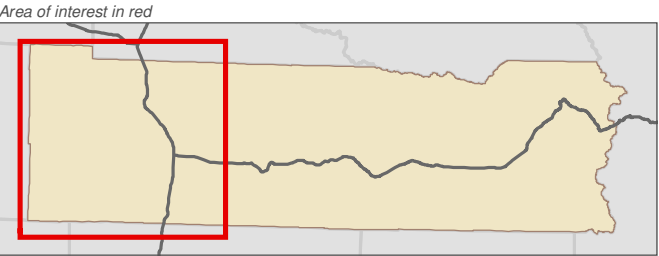
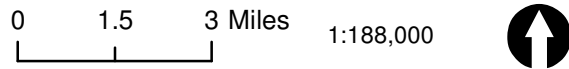
Figure 1

Date: 6/3/2014

Water and Sewer District

- Water/Sewer 1 Randle
- Water/Sewer 2 Onalaska
- Water/Sewer 3 Packwood
- Water/Sewer 4 Chehalis
- Water/Sewer 5 Onalaska
- Water/Sewer 6 Lake Mayfield

- Sewer Lines
- SMA Rivers & Streams
- SMA Lakes
- Highways
- Parcels
- SMA Jurisdiction
- City
- UGA



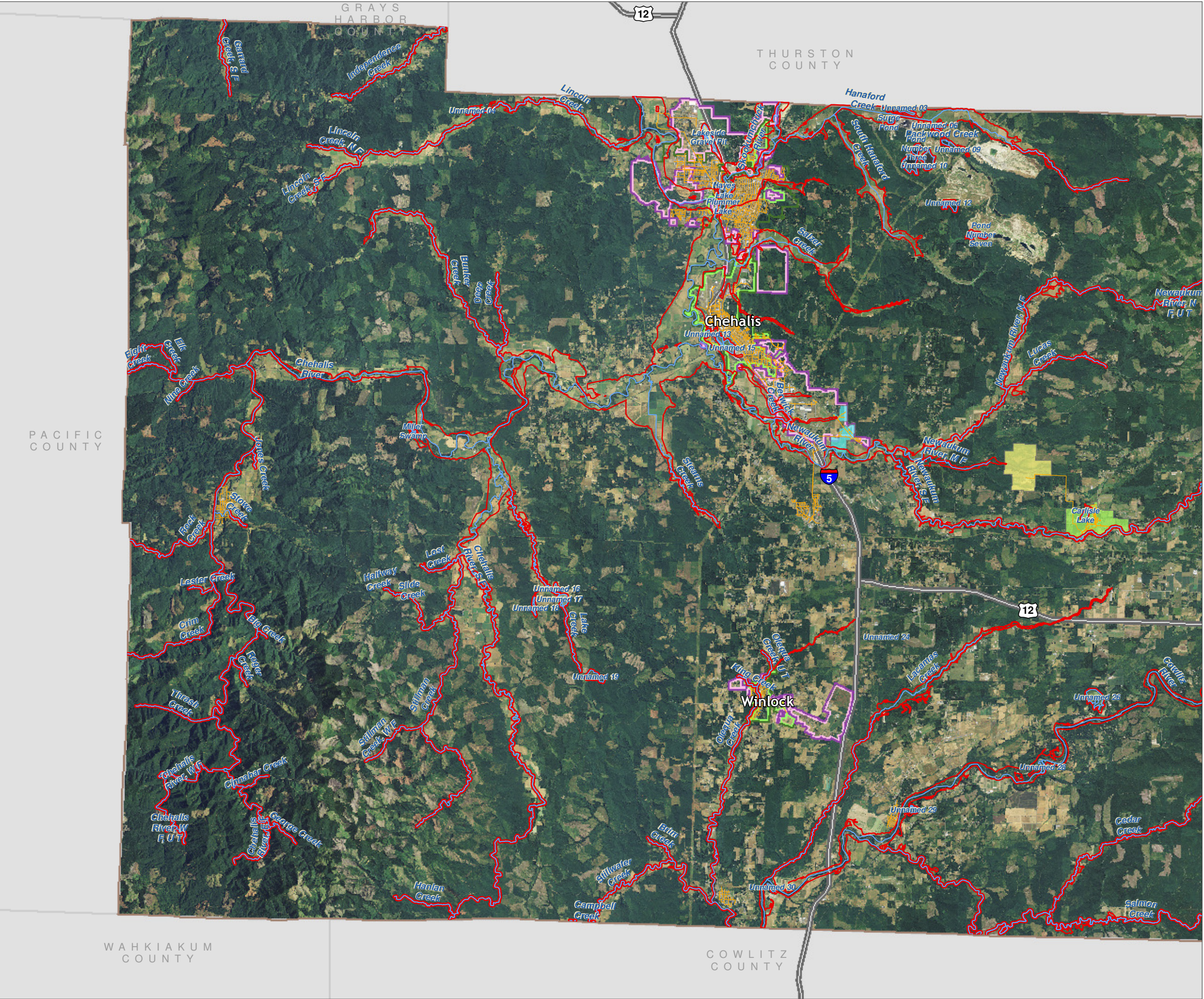
Data: Lewis County, USFWS NWI, FEMA, WA DNR, WSDOT, NRCS NAIP

Shoreline jurisdiction boundaries depicted on this map are approximate. They have not been formally delineated or surveyed and are intended for planning purposes only. Additional site-specific evaluation may be needed to confirm/verify information shown on this map.

Lewis County Coalition



City of Morton City of Winlock



Lewis County, Washington
Shoreline Master Program

Map 7D - Sewer Systems

Figure 2

Date: 6/3/2014

Water and Sewer District

- Water/Sewer 1 Randle
- Water/Sewer 2 Onalaska
- Water/Sewer 3 Packwood
- Water/Sewer 4 Chehalis
- Water/Sewer 5 Onalaska
- Water/Sewer 6 Lake Mayfield

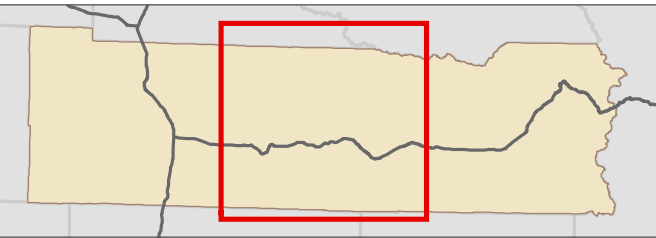
- Sewer Lines
- SMA Rivers & Streams
- SMA Lakes
- Highways

- Parcels
- SMA Jurisdiction
- City
- UGA

0 1.5 3 Miles 1:188,000



Area of interest in red



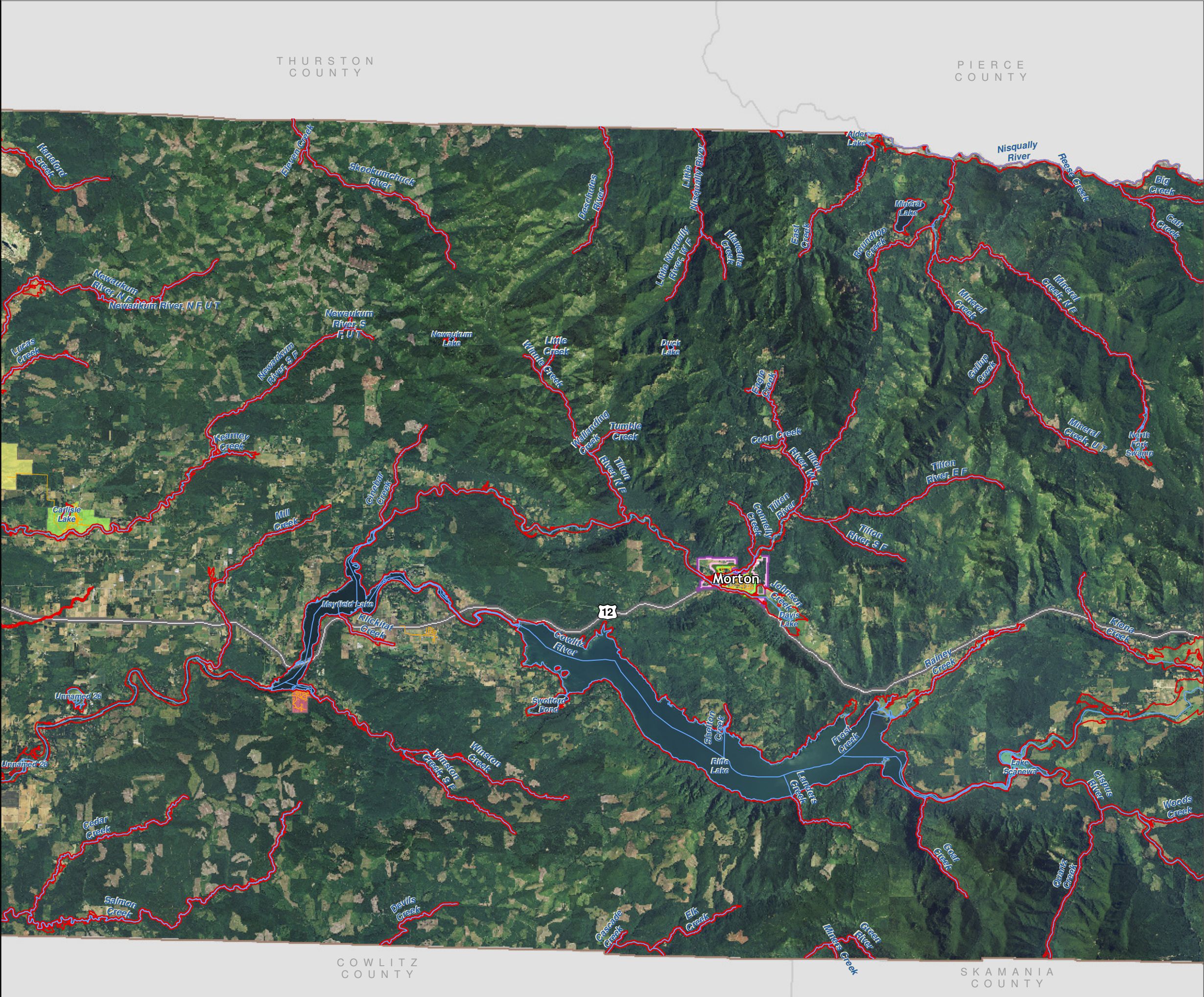
Data: Lewis County, USFWS NWI, FEMA, WA DNR, WSDOT, NRCS NAIP

Shoreline jurisdiction boundaries depicted on this map are approximate. They have not been formally delineated or surveyed and are intended for planning purposes only. Additional site-specific evaluation may be needed to confirm/verify information shown on this map.

Lewis County Coalition



City of Morton City of Winlock



Lewis County, Washington
Shoreline Master Program

Map 7D - Sewer Systems

Figure 3

Date: 6/3/2014

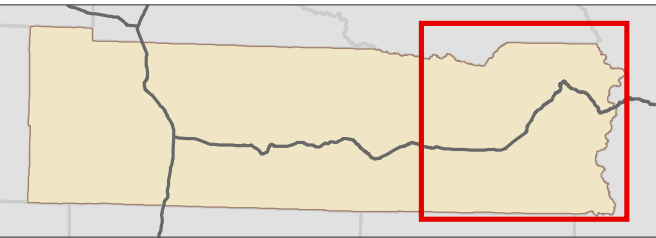
Water and Sewer District

- Water/Sewer 1 Randle
- Water/Sewer 2 Onalaska
- Water/Sewer 3 Packwood
- Water/Sewer 4 Chehalis
- Water/Sewer 5 Onalaska
- Water/Sewer 6 Lake Mayfield
- Sewer Lines
- SMA Rivers & Streams
- SMA Lakes
- Highways
- Parcels
- SMA Jurisdiction
- City
- UGA

0 1.5 3 Miles 1:188,000



Area of interest in red



Data: Lewis County, USFWS NWI, FEMA, WA DNR, WSDOT, NRCS NAIP

Shoreline jurisdiction boundaries depicted on this map are approximate. They have not been formally delineated or surveyed and are intended for planning purposes only. Additional site-specific evaluation may be needed to confirm/verify information shown on this map.

Lewis County Coalition



City of Morton City of Winlock

