

Lewis County, Washington  
Shoreline Master Program

Map 9C - Hydric Soils  
Figure: Centralia

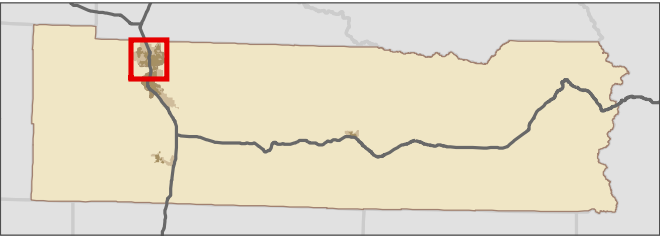
Date: 6/3/2014

- Hydric Soils**
- All Hydric
  - Partially Hydric
  - Not Hydric
  - Unknown Hydric
  - Not rated or not available
- SMA Rivers & Streams
- SMA Lakes
- Highways
- Parcels
- SMA Jurisdiction
- City
- UGA

0 0.25 0.5 Miles 1:38,000



Area of interest in red

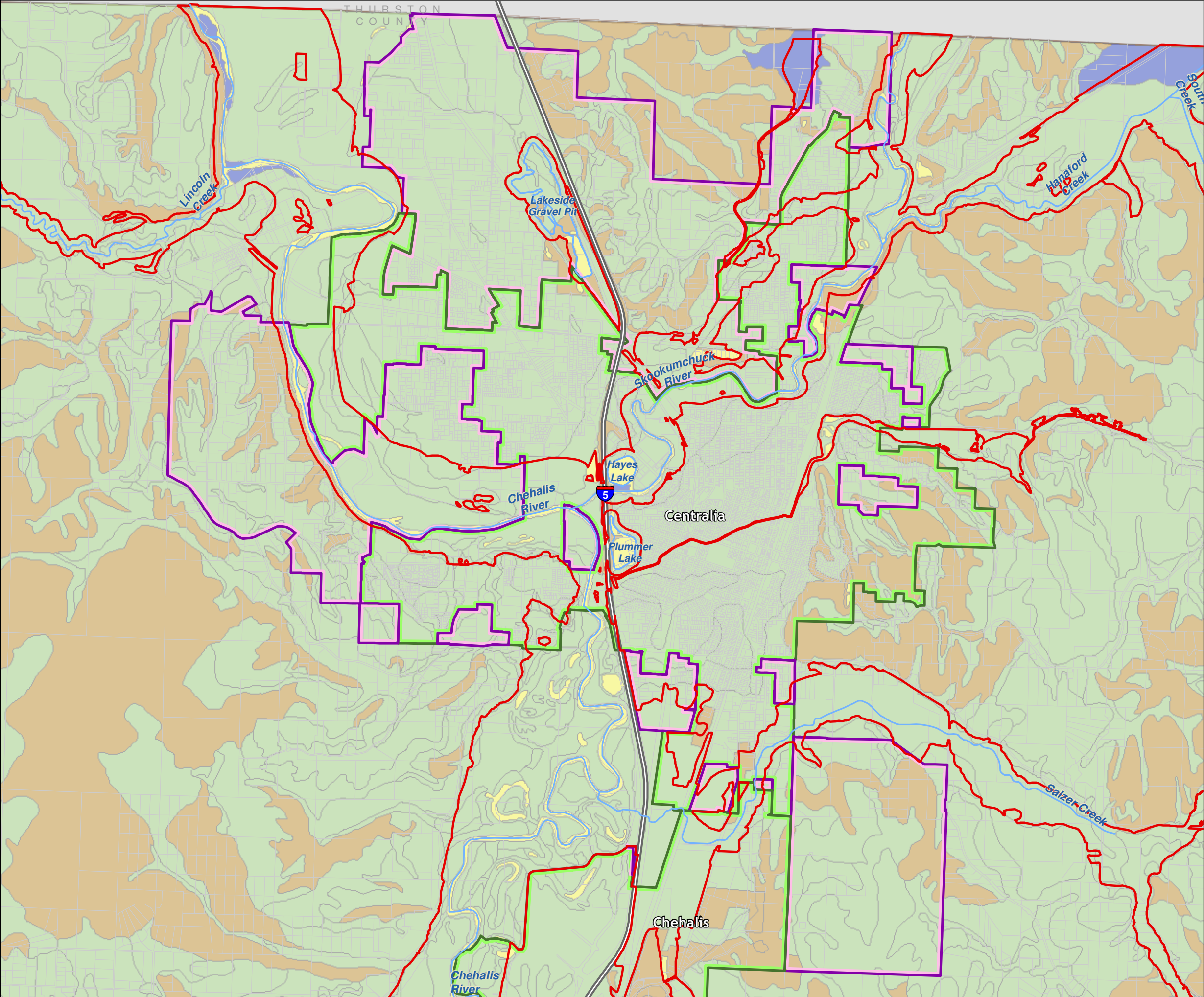


Data: Lewis County, USFWS NWI, FEMA, WA DNR, WSDOT, NRCS NAIP  
Shoreline jurisdiction boundaries depicted on this map are approximate. They have not been formally delineated or surveyed and are intended for planning purposes only. Additional site-specific evaluation may be needed to confirm/verify information shown on this map.

Lewis County Coalition



City of Morton City of Winlock





Lewis County, Washington  
Shoreline Master Program

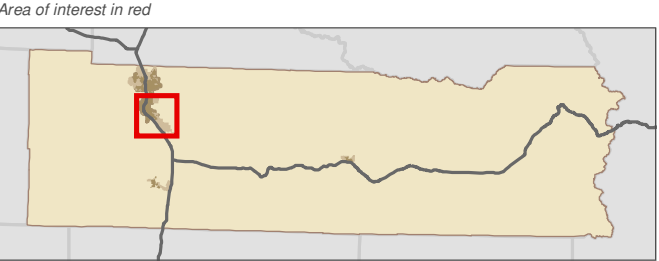
Map 9C - Hydric Soils  
Figure: Chehalis

Date: 6/3/2014

Hydric Soils

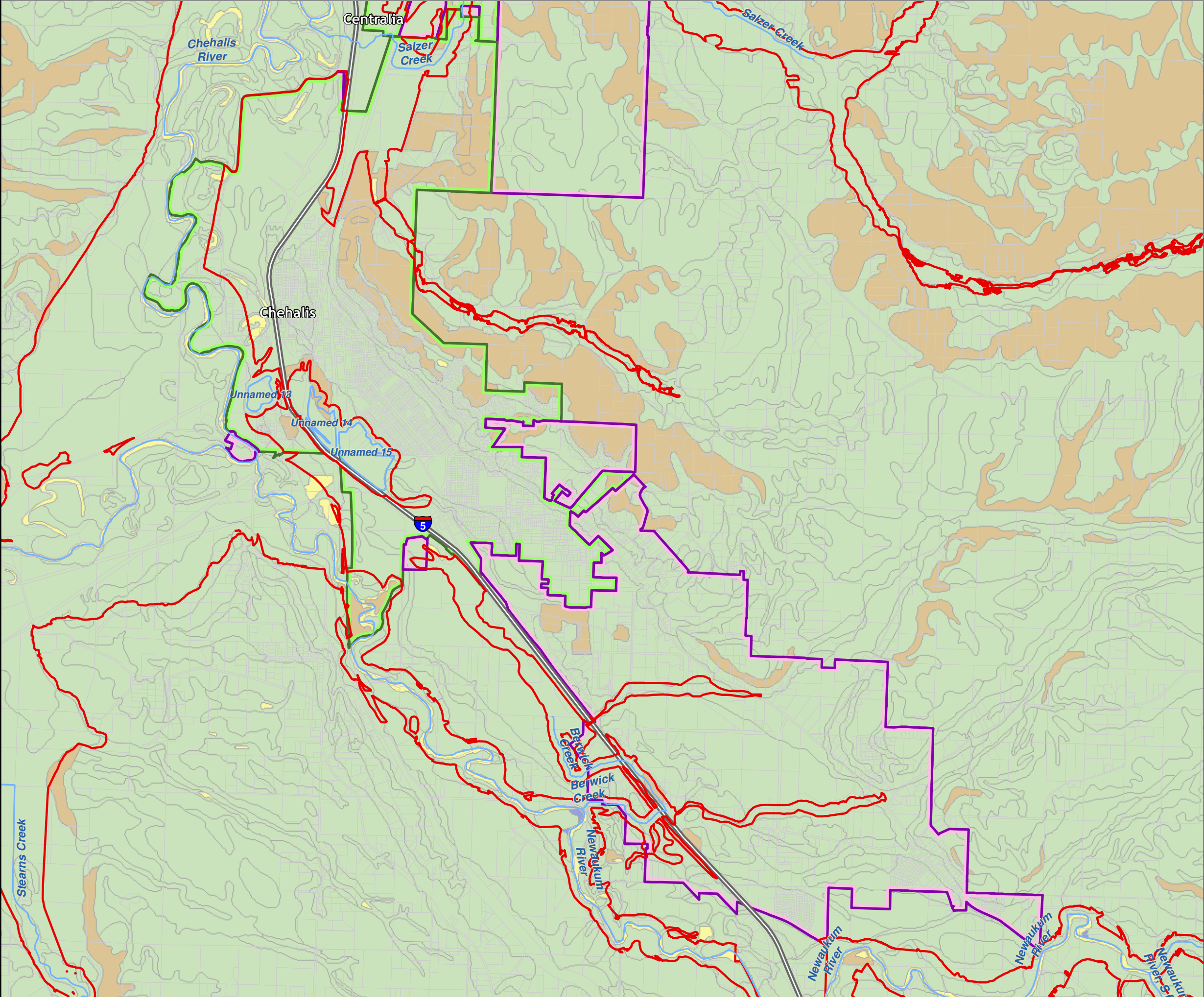
- All Hydric
- Partially Hydric
- Not Hydric
- Unknown Hydric
- Not rated or not available
- SMA Rivers & Streams
- SMA Lakes
- Highways
- Parcels
- SMA Jurisdiction
- City
- UGA

0 0.25 0.5 Miles 1:39,000



Data: Lewis County, USFWS NWI, FEMA, WA DNR, WSDOT, NRCS NAIP  
Shoreline jurisdiction boundaries depicted on this map are approximate. They have not been formally delineated or surveyed and are intended for planning purposes only. Additional site-specific evaluation may be needed to confirm/verify information shown on this map.

Lewis County Coalition





Lewis County, Washington  
Shoreline Master Program

Map 9C - Hydric Soils

Figure: Winlock

Date: 6/3/2014

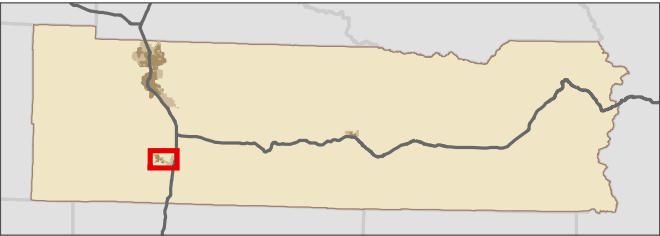
Hydric Soils

- All Hydric
- Partially Hydric
- Not Hydric
- Unknown Hydric
- Not rated or not available
- SMA Rivers & Streams
- SMA Lakes
- Highways
- Parcels
- SMA Jurisdiction
- City
- UGA

0 0.125 0.25 Miles  
1:21,000



Area of interest in red

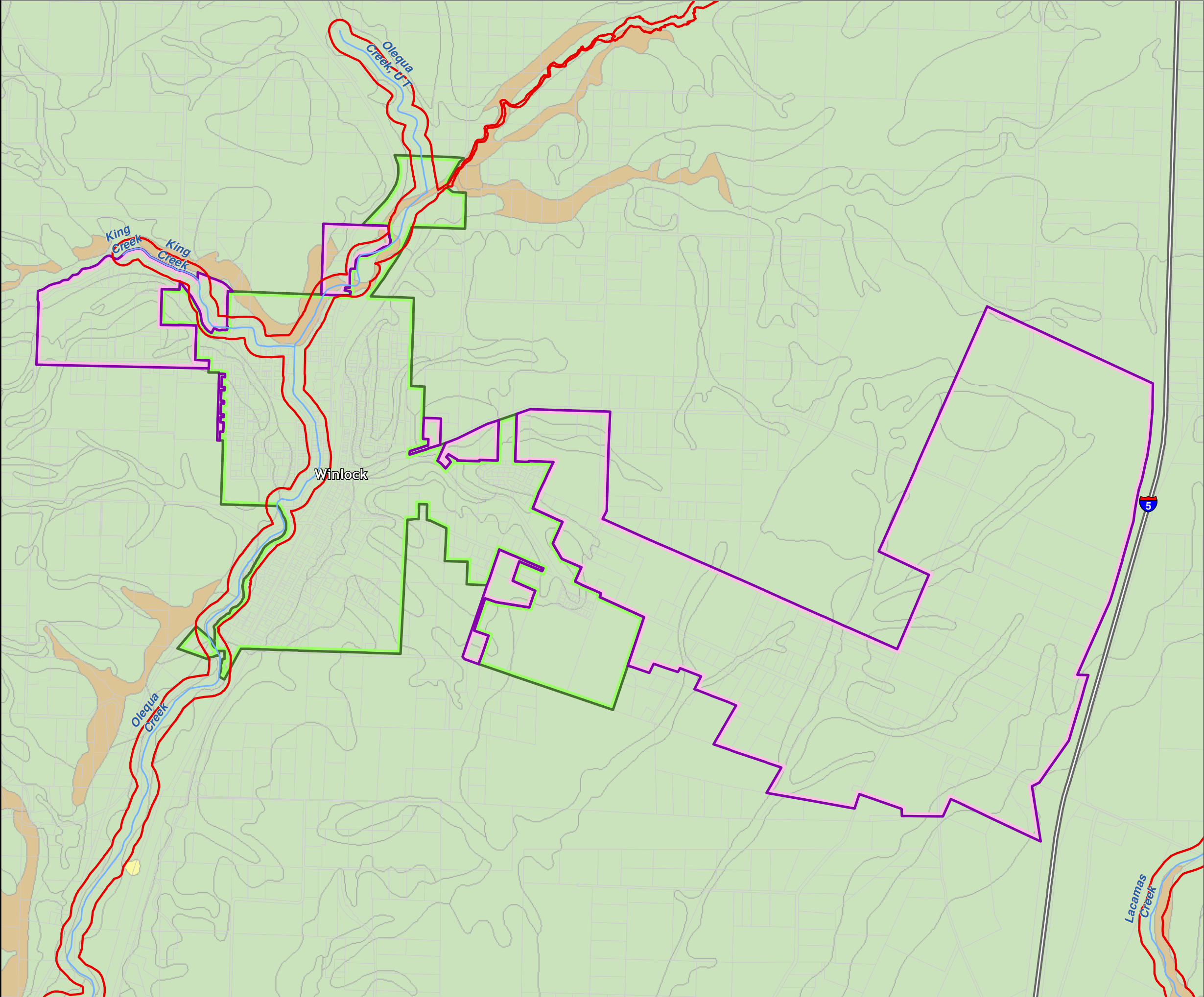


Data: Lewis County, USFWS NWI, FEMA, WA DNR, WSDOT, NRCS NAIP  
Shoreline jurisdiction boundaries depicted on this map are approximate. They have not been formally delineated or surveyed and are intended for planning purposes only. Additional site-specific evaluation may be needed to confirm/verify information shown on this map.

Lewis County Coalition



City of Morton City of Winlock



Lewis County, Washington  
Shoreline Master Program

Map 9C - Hydric Soils

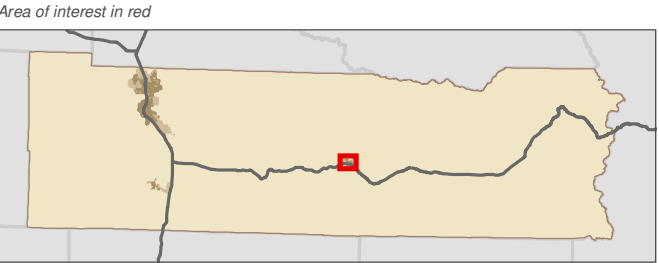
Figure: Morton

Date: 6/3/2014

Hydric Soils

- All Hydric
- Partially Hydric
- Not Hydric
- Unknown Hydric
- Not rated or not available
- SMA Rivers & Streams
- SMA Lakes
- Highways
- Parcels
- SMA Jurisdiction
- City
- UGA

0 0.075 0.15 Miles  
1:13,000



Data: Lewis County, USFWS NWI, FEMA, WA DNR, WSDOT, NRCS NAIP  
Shoreline jurisdiction boundaries depicted on this map are approximate. They have not been formally delineated or surveyed and are intended for planning purposes only. Additional site-specific evaluation may be needed to confirm/verify information shown on this map.

Lewis County Coalition

