

Lewis County, Washington
Shoreline Master Program

Map 9D - Hydric Soils

Figure 1

Date: 6/3/2014

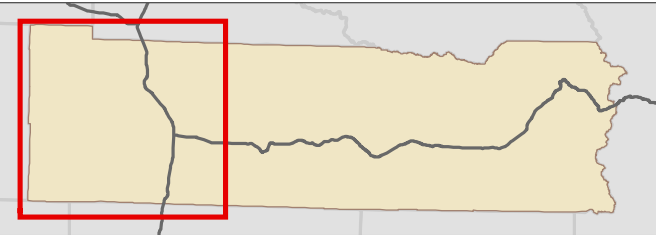
- Hydric Soils**
- All Hydric
 - Partially Hydric
 - Not Hydric
 - Unknown Hydric
 - Not rated or not available
- SMA Lakes
- SMA Rivers & Streams
- Highways
- SMA Jurisdiction
- City
- UGA

0 1.5 3 Miles

1:188,000



Area of interest in red



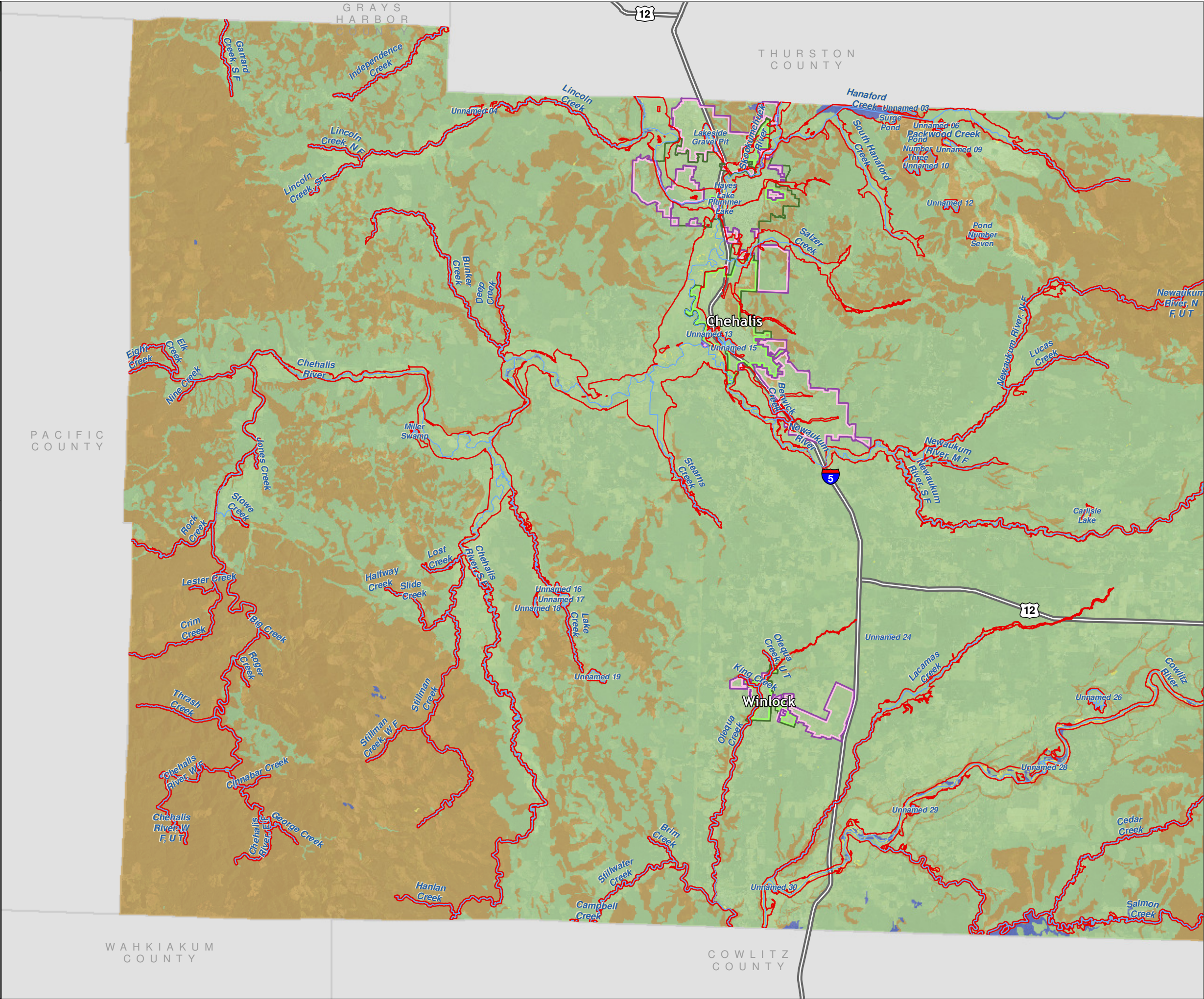
Data: Lewis County, USFWS NWI, FEMA, WA DNR, WSDOT, NRCS NAIP

Shoreline jurisdiction boundaries depicted on this map are approximate. They have not been formally delineated or surveyed and are intended for planning purposes only. Additional site-specific evaluation may be needed to confirm/verify information shown on this map.

Lewis County Coalition



City of Morton City of Winlock














Lewis County, Washington Shoreline Master Program

Map 9D - Hydric Soils

Figure 2

Date: 6/3/2014

Hydric Soils

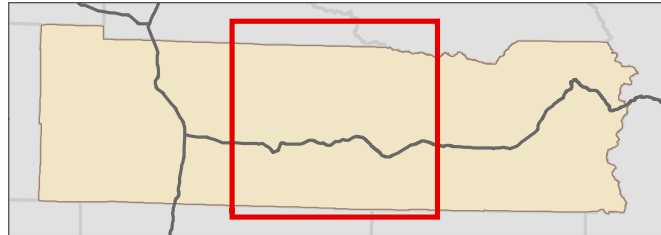
-  All Hydric
-  Partially Hydric
-  Not Hydric
-  Unknown Hydric
-  Not rated or not available
-  SMA Lakes
-  SMA Rivers & Streams
-  Highways
-  SMA Jurisdiction
-  City
-  UGA

0 1.5 3 Miles

1:188,000



Area of interest in red



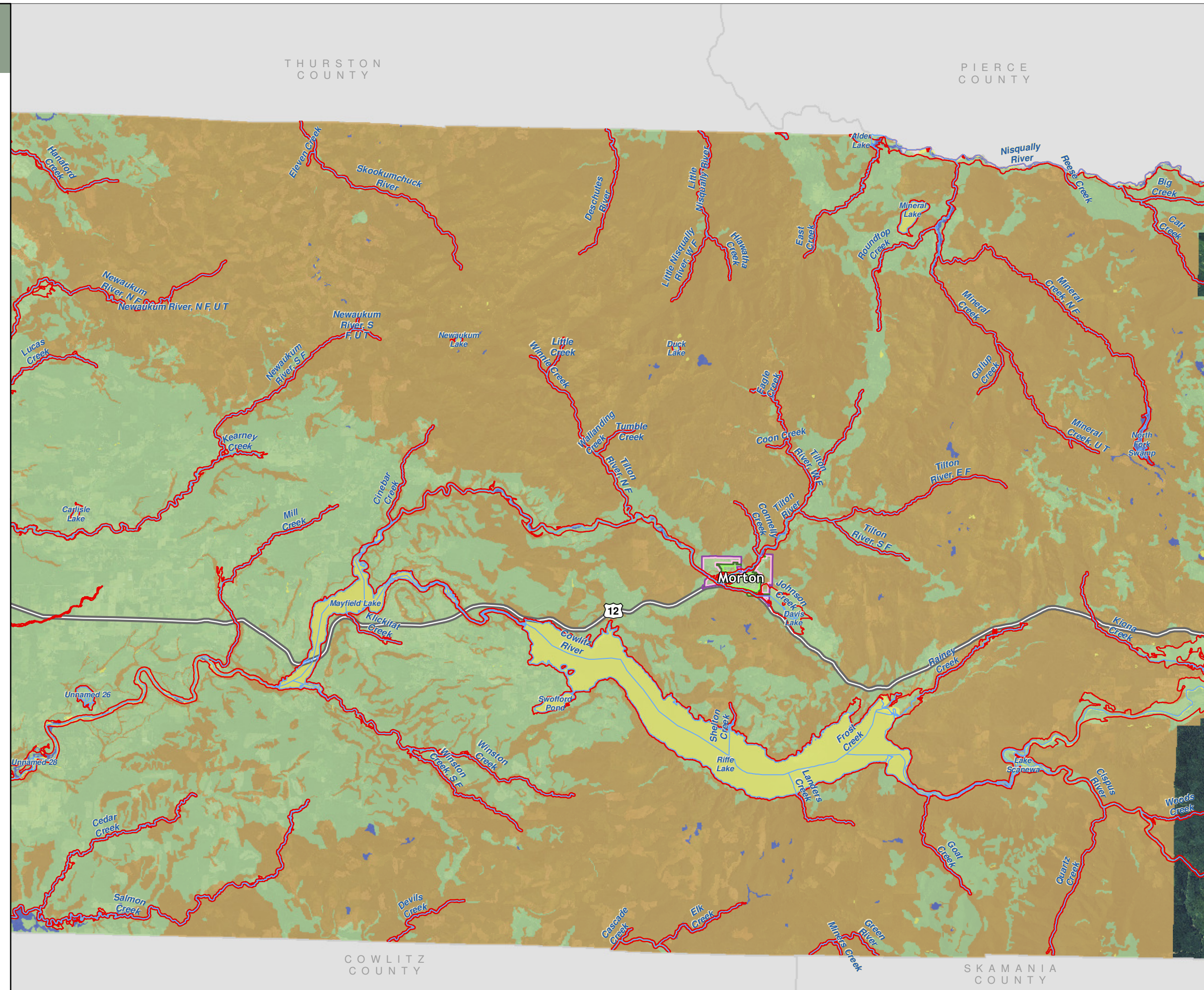
Data: Lewis County, USFWS NWI, FEMA,
WA DNR, WSDOT, NRCS NAIP

Shoreline jurisdiction boundaries depicted on this map are approximate. They have not been formally delineated or surveyed and are intended for planning purposes only. Additional site-specific evaluation may be needed to confirm/verify information shown on this map.

Lewis County Coalition



City of Morton City of Winlock



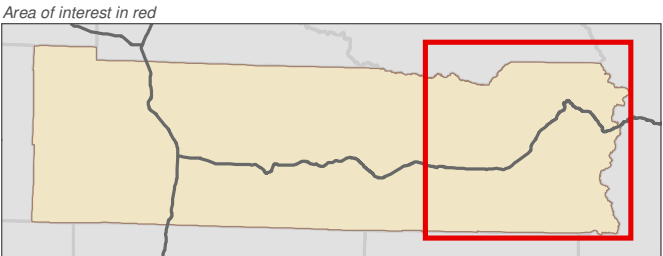
Lewis County, Washington
Shoreline Master Program

Map 9D - Hydric Soils
Figure 3

Date: 6/3/2014

- Hydric Soils**
- All Hydric
 - Partially Hydric
 - Not Hydric
 - Unknown Hydric
 - Not rated or not available
- SMA Lakes
- SMA Rivers & Streams
- Highways
- SMA Jurisdiction
- City
- UGA

0 1.5 3 Miles 1:188,000



Data: Lewis County, USFWS NWI, FEMA, WA DNR, WSDOT, NRCS NAIP

Shoreline jurisdiction boundaries depicted on this map are approximate. They have not been formally delineated or surveyed and are intended for planning purposes only. Additional site-specific evaluation may be needed to confirm/verify information shown on this map.

Lewis County Coalition



City of Morton City of Winlock

