

Lewis County, Washington  
Shoreline Master Program

Map 10D - Surficial Geology  
Figure 1

Date: 6/3/2014

Surficial Geology

- Alluvium

Alpine glacial drift, pre-Fraser

Alpine glacial outwash, Fraser-age

Alpine glacial outwash, pre-Fraser

Andesite flows

Basalt flows

Basalt flows (Grande Ronde Basalt, undivided [CRB])

Basalt flows (Grande Ronde Basalt, upper flows of norm.mag.pol.)

Basalt flows and flow breccias, Crescent Formation

Basic intrusive rocks

Continental glacial outwash, Fraser-age

Continental glacial outwash, gravel, Fraser-age

Continental sedimentary deposits or rocks

Marine sedimentary rocks

Mass-wasting deposits, mostly landslides

Nearshore sedimentary rocks

Terraced deposits

Tuffs and tuff breccias

Volcaniclastic deposits or rocks

SMA Rivers & Streams

SMA Lakes

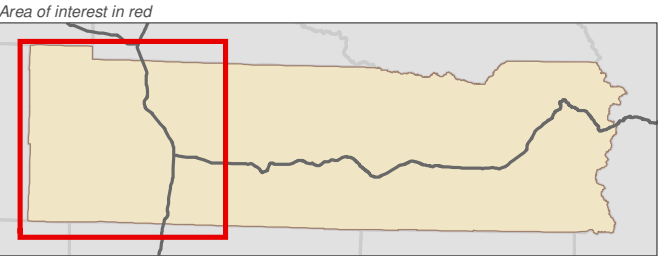
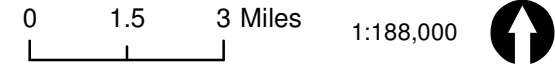
Highways

Parcels

SMA Jurisdiction

City

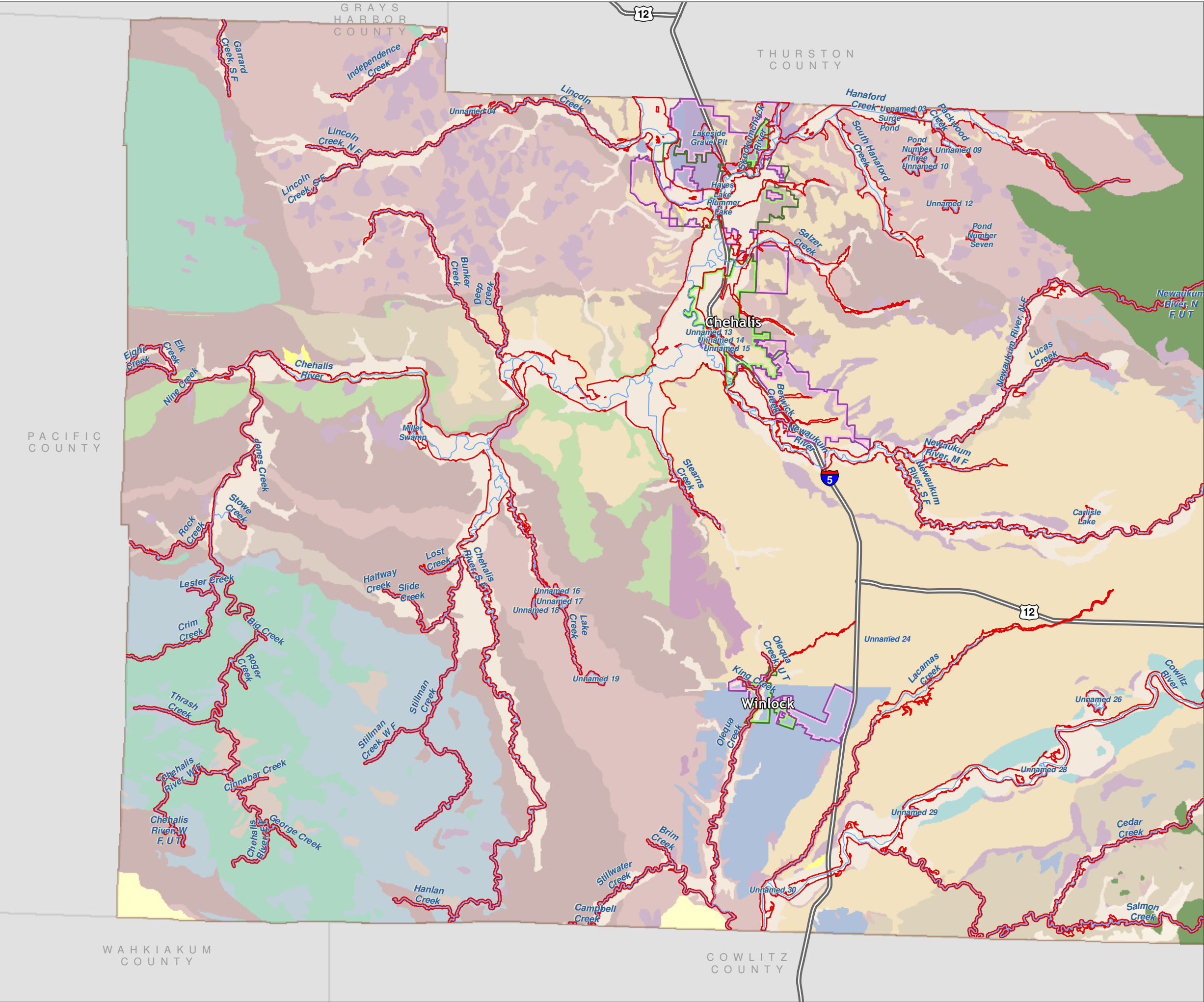
UGA



Data: Lewis County, USFWS NWI, FEMA, WA DNR, WSDOT, NRCS NAIP

Shoreline jurisdiction boundaries depicted on this map are approximate. They have not been formally delineated or surveyed and are intended for planning purposes only. Additional site-specific evaluation may be needed to confirm/verify information shown on this map.

Lewis County Coalition



Lewis County, Washington  
Shoreline Master Program

Map 10D - Surficial Geology  
Figure 2

Date: 6/3/2014

Surficial Geology

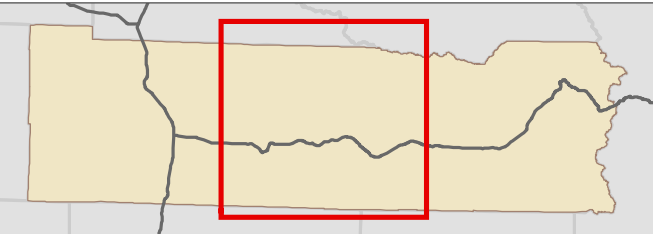
- |   |  |
|---|--|
| Alluvium                                  | Intrusive andesite                       |
| Alpine glacial drift, Fraser-age          | Intrusive andesite and dacite            |
| Alpine glacial drift, pre-Fraser          | Intrusive rhyolite                       |
| Alpine glacial outwash, Fraser-age        | Marine sedimentary rocks                 |
| Alpine glacial outwash, pre-Fraser        | Mass-wasting deposits, mostly landslides |
| Alpine glacial till, Fraser-age           | Nearshore sedimentary rocks              |
| Alpine glacial till, pre-Fraser           | Quartz diorite                           |
| Andesite flows                            | Quartz monzonite                         |
| Argillic alteration                       | Tuffs and tuff breccias                  |
| Basalt flows                              | Volcaniclastic deposits or rocks         |
| Basaltic andesite flows                   | SMA Rivers & Streams                     |
| Basic intrusive rocks                     | SMA Lakes                                |
| Continental sedimentary deposits or rocks | Highways                                 |
| Dacite flows                              | Parcels                                  |
| Diorite                                   | SMA Jurisdiction                         |
| Granodiorite                              | City                                     |
|   | UGA                                      |

0 1.5 3 Miles

1:188,000



Area of interest in red



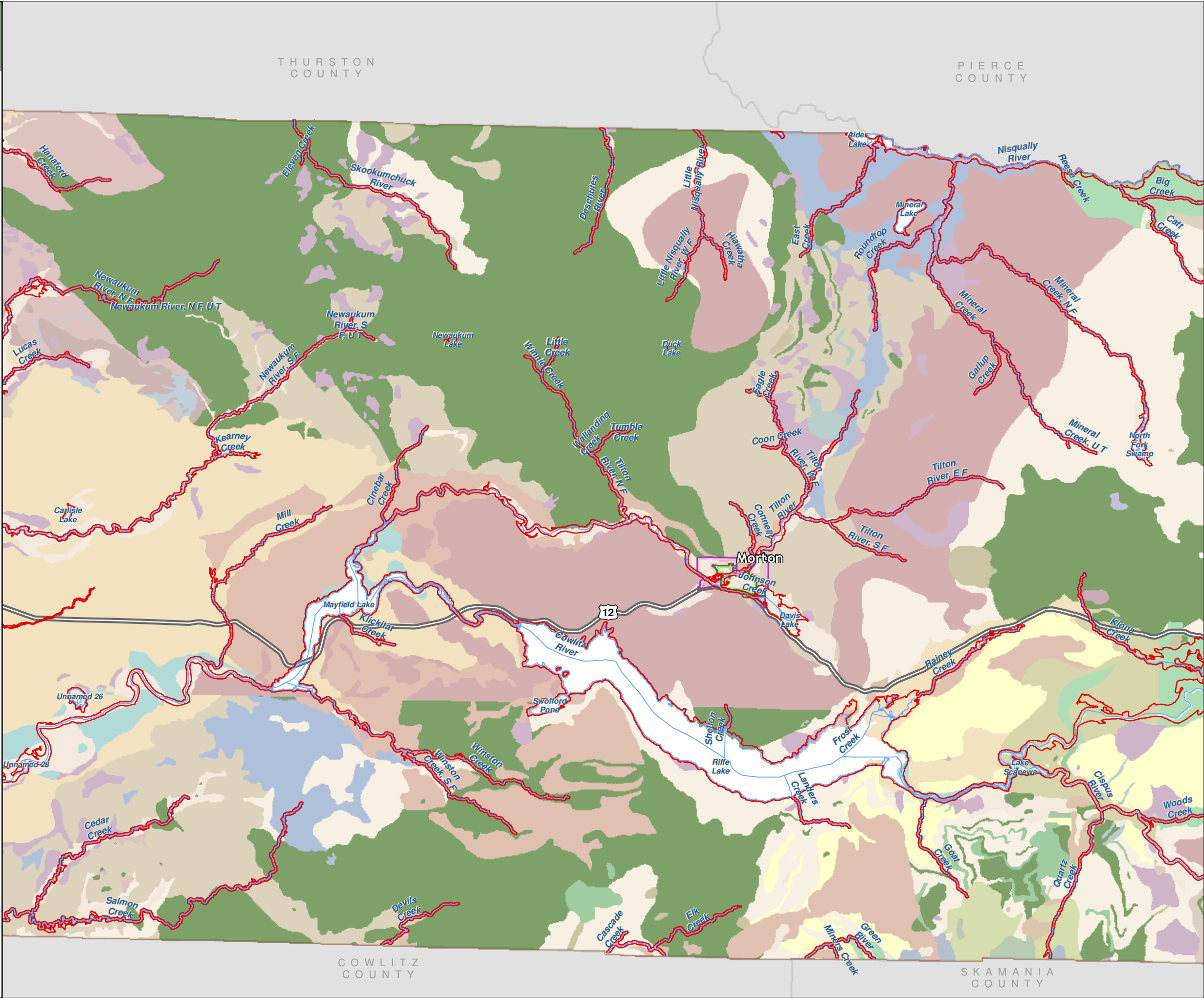
Data: Lewis County, USFWS NWI, FEMA, WA DNR, WSDOT, NRCS NAIP

Shoreline jurisdiction boundaries depicted on this map are approximate. They have not been formally delineated or surveyed and are intended for planning purposes only. Additional site-specific evaluation may be needed to confirm/verify information shown on this map.

Lewis County Coalition



City of Morton City of Winlock





Lewis County, Washington  
Shoreline Master Program

Map 10D - Surficial Geology  
Figure 3

Date: 6/3/2014

Surficial Geology

- Acidic intrusive rocks

Alluvium

Alpine glacial drift, Fraser-age

Alpine glacial drift, pre-Fraser

Alpine glacial outwash, pre-Fraser

Alpine glacial till, Fraser-age

Alpine glacial till, pre-Fraser

Andesite flows

Argillic alteration

Basalt flows

Basaltic andesite flows

Basic intrusive rocks

Continental sedimentary deposits or rocks

Dacite flows

Diorite

Gabbro

Granodiorite

Ice

Intrusive andesite

Intrusive andesite and dacite
- Intrusive basaltic andesite

Intrusive rhyolite

Intrusive rocks, undivided

Lahars

Marine sedimentary rocks

Mass-wasting deposits, mostly landslides

Quartz diorite

Quartz monzonite

Talus deposits

Tuffs and tuff breccias

Volcanic rocks

Volcaniclastic deposits or rocks

SMA Rivers & Streams

SMA Lakes

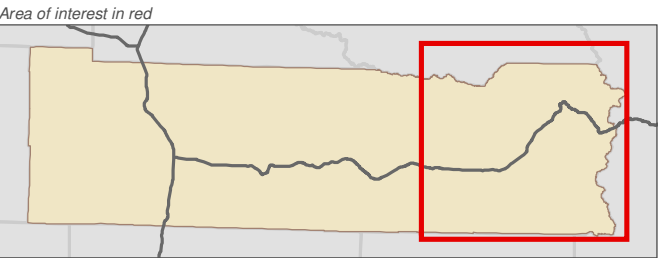
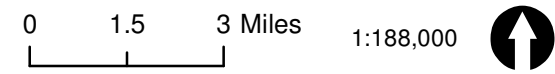
Highways

Parcels

SMA Jurisdiction

City

UGA



Data: Lewis County, USFWS NWI, FEMA, WA DNR, WSDOT, NRCS NAIP

Shoreline jurisdiction boundaries depicted on this map are approximate. They have not been formally delineated or surveyed and are intended for planning purposes only. Additional site-specific evaluation may be needed to confirm/verify information shown on this map.

Lewis County  
Washington's First County  
est. 1854

CENTRALIA

CHEHALIS, WASHINGTON  
1883

City of Morton

City of Winlock

AHBL

core  
GIS  
COMMUNITY, REGIONAL & ENVIRONMENTAL

