

Lewis County, Washington
Shoreline Master Program

Map 11D - Geologic Hazards
Figure 1

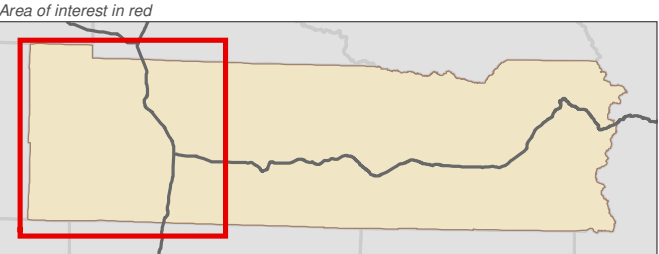
Date: 6/3/2014

Geologic Hazards

- Small Lahars (Recurrence Interval < 100 Years - Case 3)
- Moderate Lahars (Recurrence Interval 100-500 Years - Case 2)
- Large Lahars (Recurrence Interval 500-1,000 Years - Case 1)
- Rainier Blast Zone
- SMA Rivers & Streams
- SMA Lakes
- Highways
- Parcels
- SMA Jurisdiction
- City
- UGA

0 1.5 3 Miles

1:188,000



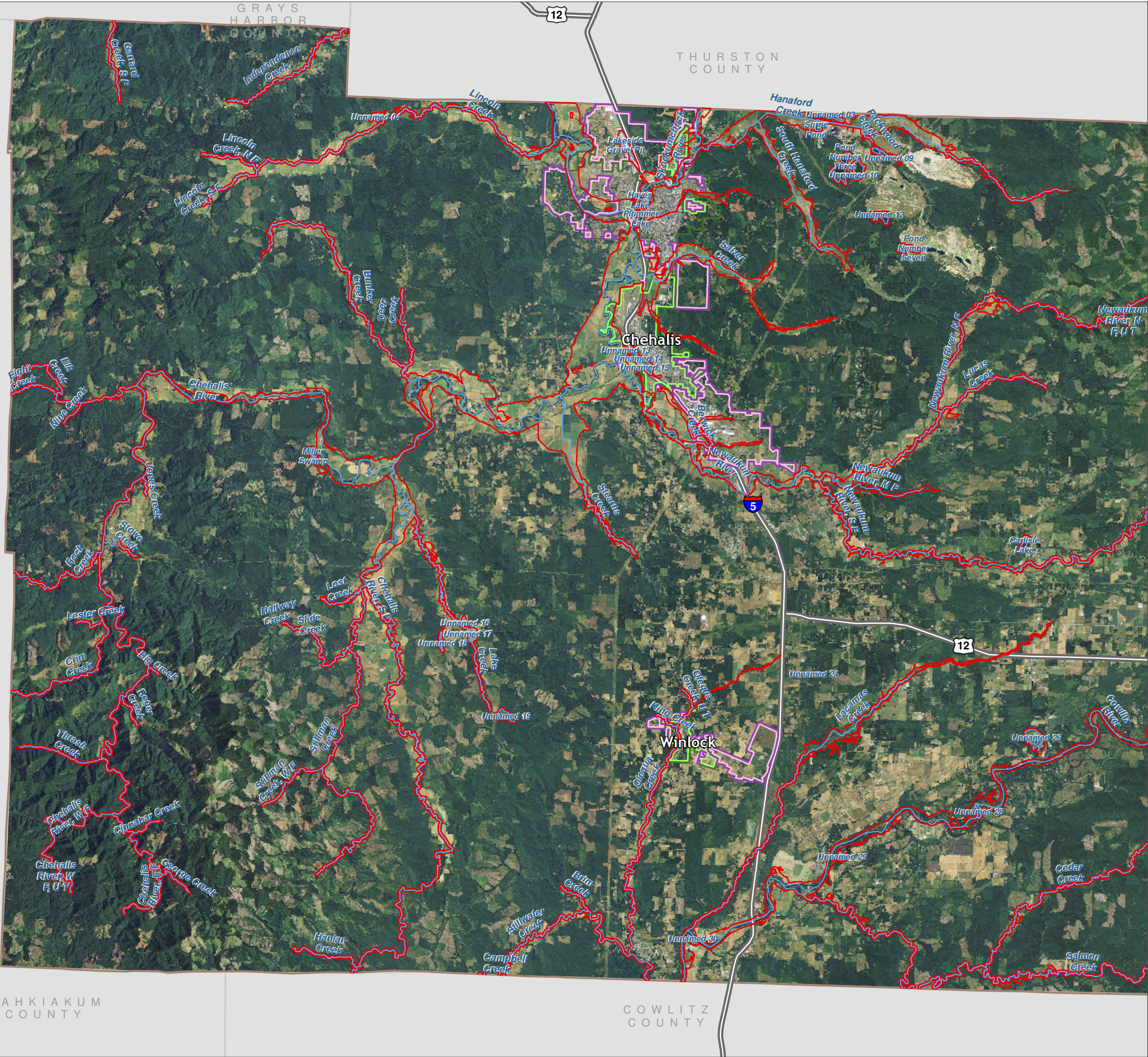
Data: Lewis County, USFWS NWI, FEMA, WA DNR, WSDOT, NRCS NAIP

Shoreline jurisdiction boundaries depicted on this map are approximate. They have not been formally delineated or surveyed and are intended for planning purposes only. Additional site-specific evaluation may be needed to confirm/verify information shown on this map.

Lewis County Coalition



City of Morton City of Winlock



Lewis County, Washington
Shoreline Master Program

Map 11D - Geologic Hazards
Figure 2

Date: 6/3/2014

Geologic Hazards

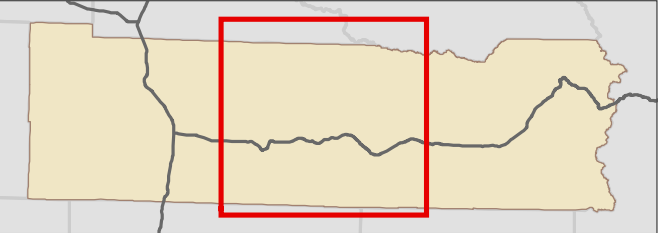
- Small Lahars (Recurrence Interval < 100 Years - Case 3)
- Moderate Lahars (Recurrence Interval 100-500 Years - Case 2)
- Large Lahars (Recurrence Interval 500-1,000 Years - Case 1)
- Rainier Blast Zone
- SMA Rivers & Streams
- SMA Lakes
- Highways
- Parcels
- SMA Jurisdiction
- City
- UGA

0 1.5 3 Miles

1:188,000



Area of interest in red



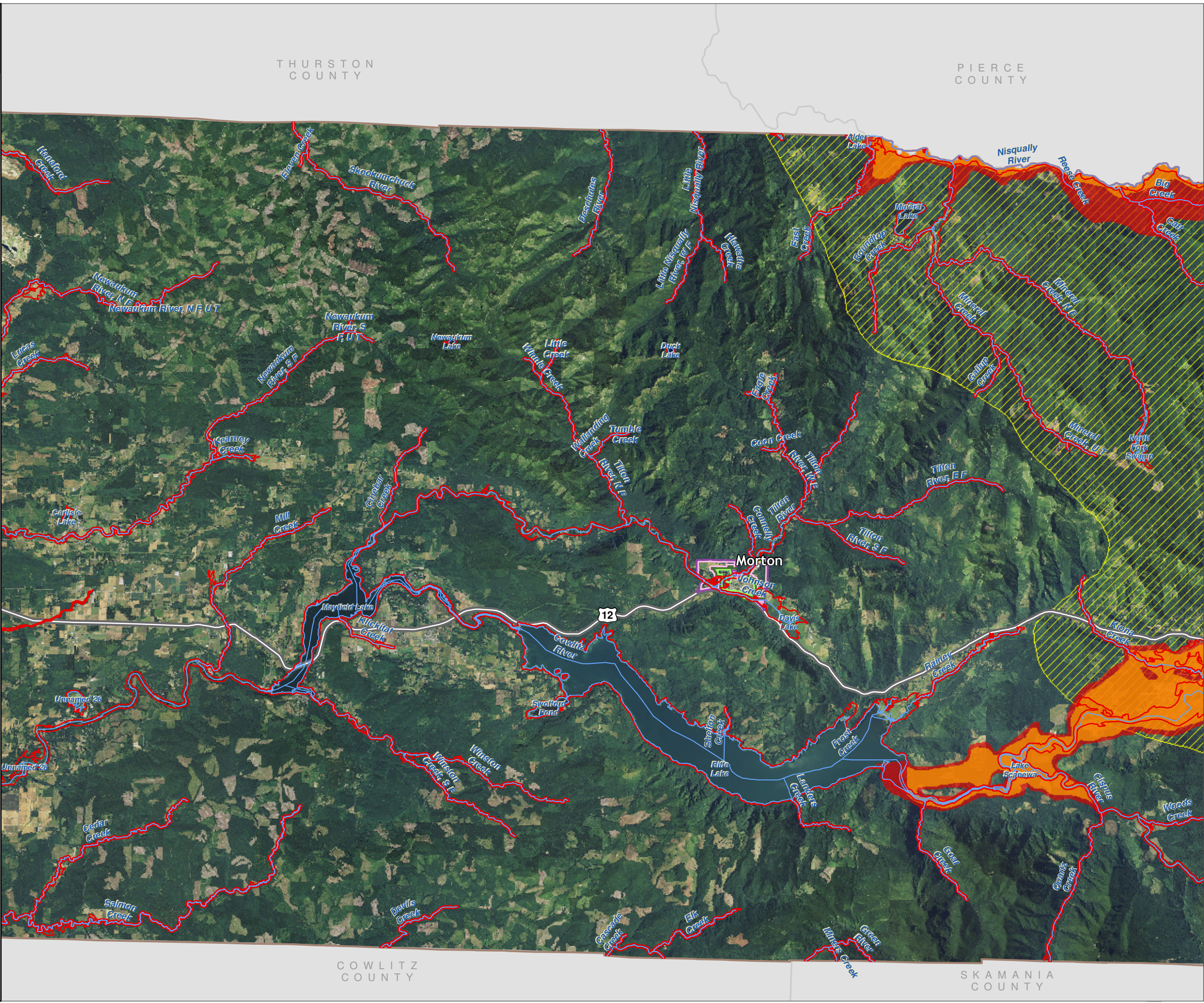
Data: Lewis County, USFWS NWI, FEMA, WA DNR, WSDOT, NRCS NAIP

Shoreline jurisdiction boundaries depicted on this map are approximate. They have not been formally delineated or surveyed and are intended for planning purposes only. Additional site-specific evaluation may be needed to confirm/verify information shown on this map.

Lewis County Coalition



City of Morton City of Winlock



Lewis County, Washington
Shoreline Master Program

Map 11D - Geologic Hazards
Figure 3

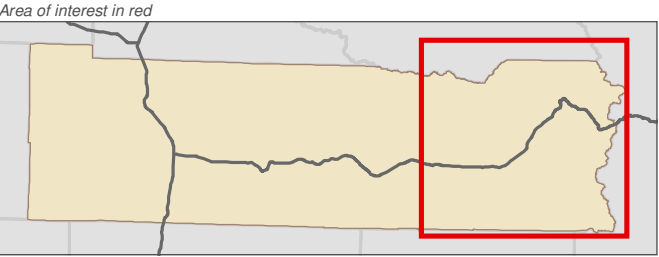
Date: 6/3/2014

Geologic Hazards

- Small Lahars (Recurrence Interval < 100 Years - Case 3)
- Moderate Lahars (Recurrence Interval 100-500 Years - Case 2)
- Large Lahars (Recurrence Interval 500-1,000 Years - Case 1)
- Rainier Blast Zone
- SMA Rivers & Streams
- SMA Lakes
- Highways
- Parcels
- SMA Jurisdiction
- City
- UGA

0 1.5 3 Miles

1:188,000



Data: Lewis County, USFWS NWI, FEMA, WA DNR, WSDOT, NRCS NAIP

Shoreline jurisdiction boundaries depicted on this map are approximate. They have not been formally delineated or surveyed and are intended for planning purposes only. Additional site-specific evaluation may be needed to confirm/verify information shown on this map.

Lewis County Coalition



City of Morton City of Winlock

