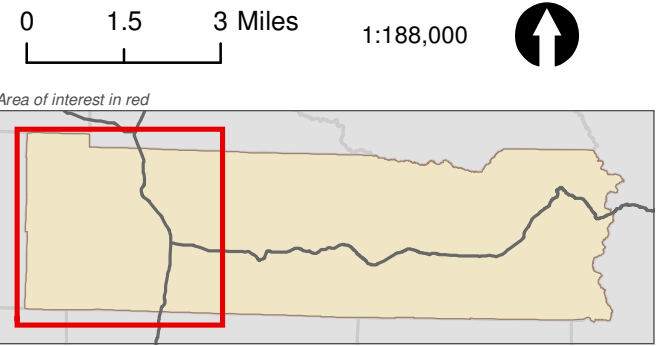


Lewis County, Washington
Shoreline Master Program

Map 12D - Liquefaction Hazard
Figure 1

Date: 6/3/2014

- Liquefaction Hazard**
- High
 - Moderate to High
 - Low to Moderate
 - Very Low to Low
 - N/A (bedrock, peat, ice or water)
- SMA Rivers & Streams
- SMA Lakes
- Highways
- Parcels
- SMA Jurisdiction
- City
- UGA



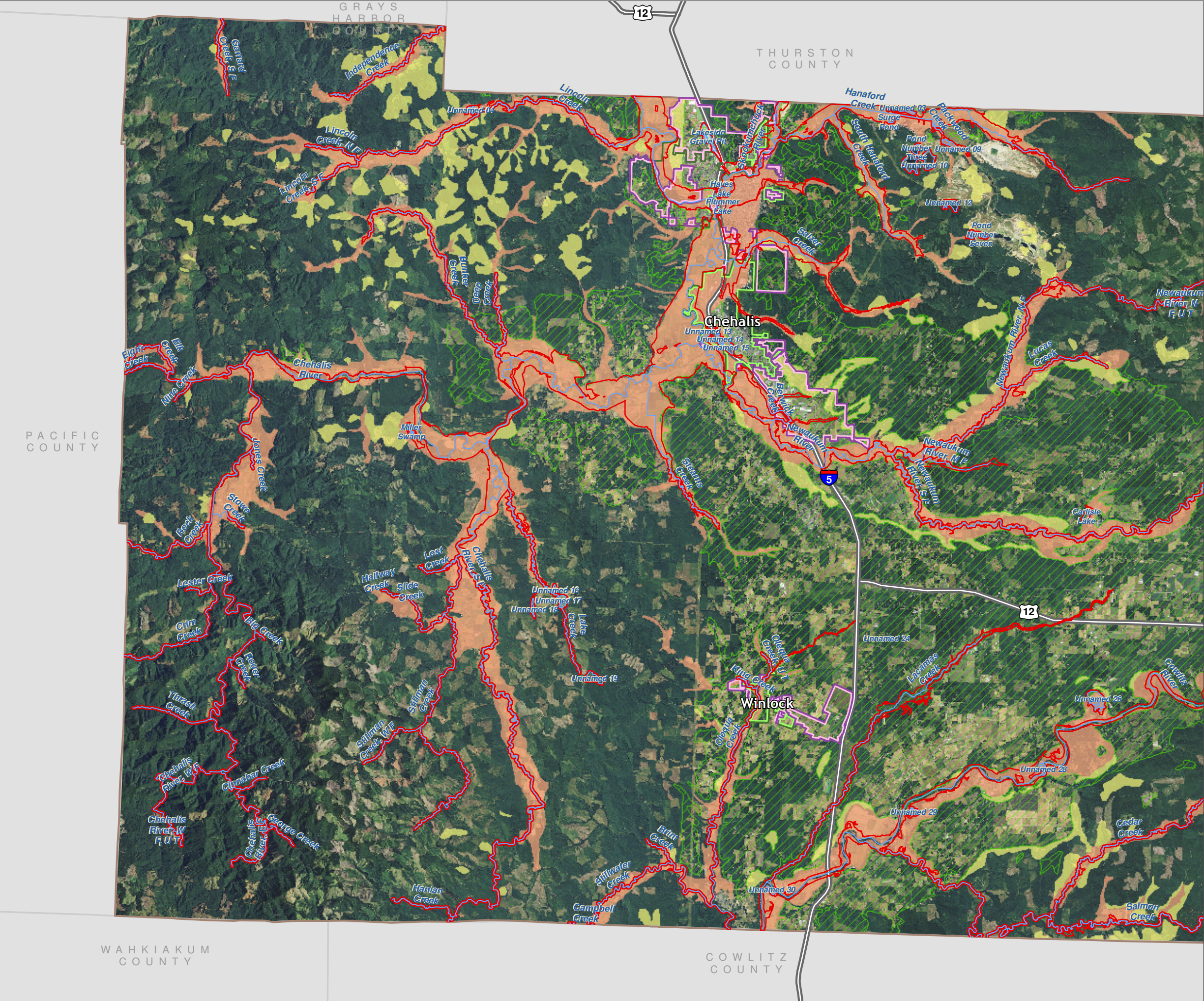
Data: Lewis County, USFWS NWI, FEMA, WA DNR, WSDOT, NRCS NAIP

Shoreline jurisdiction boundaries depicted on this map are approximate. They have not been formally delineated or surveyed and are intended for planning purposes only. Additional site-specific evaluation may be needed to confirm/verify information shown on this map.

Lewis County Coalition



City of Morton City of Winlock

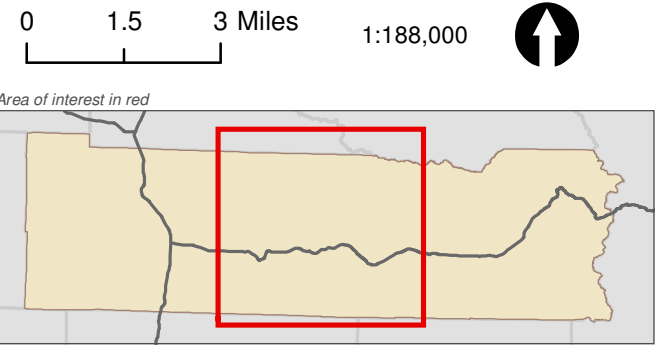


Lewis County, Washington
Shoreline Master Program

Map 12D - Liquefaction Hazard
Figure 2

Date: 6/3/2014

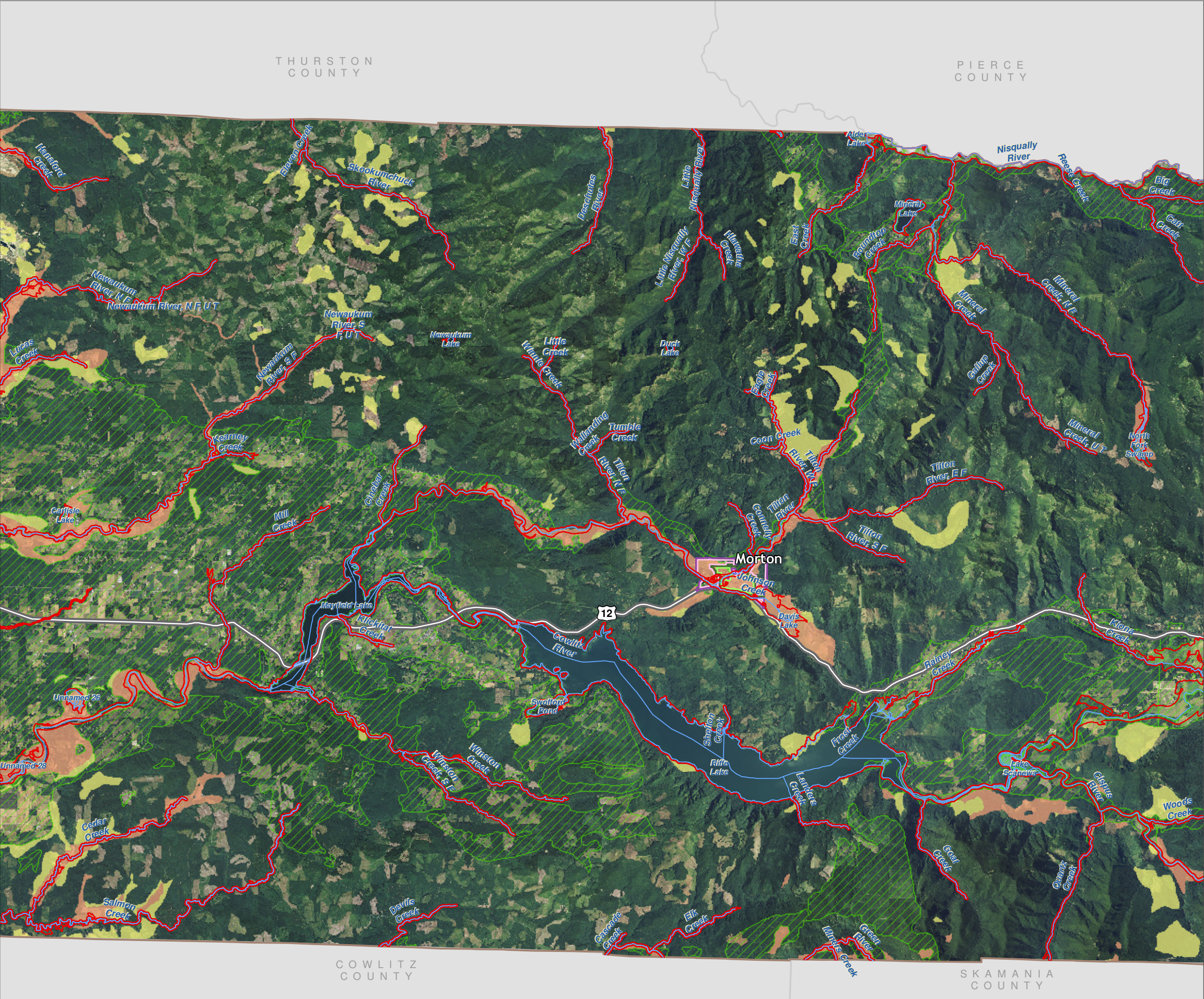
- Liquefaction Hazard**
- High
 - Moderate to High
 - Low to Moderate
 - Very Low to Low
 - N/A (bedrock, peat, ice or water)
- SMA Rivers & Streams
- SMA Lakes
- Highways
- Parcels
- SMA Jurisdiction
- City
- UGA



Data: Lewis County, USFWS NWI, FEMA, WA DNR, WSDOT, NRCS NAIP

Shoreline jurisdiction boundaries depicted on this map are approximate. They have not been formally delineated or surveyed and are intended for planning purposes only. Additional site-specific evaluation may be needed to confirm/verify information shown on this map.

Lewis County Coalition

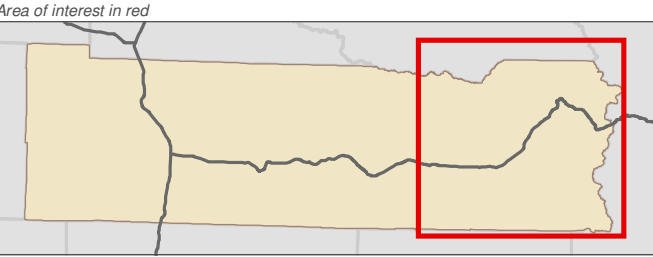
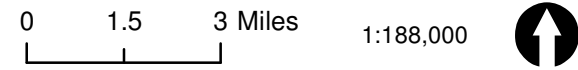


Lewis County, Washington
Shoreline Master Program

Map 12D - Liquefaction Hazard
Figure 3

Date: 6/3/2014

- Liquefaction Hazard**
- High
 - Moderate to High
 - Low to Moderate
 - Very Low to Low
 - N/A (bedrock, peat, ice or water)
- SMA Rivers & Streams
- SMA Lakes
- Highways
- Parcels
- SMA Jurisdiction
- City
- UGA



Data: Lewis County, USFWS NWI, FEMA, WA DNR, WSDOT, NRCS NAIP

Shoreline jurisdiction boundaries depicted on this map are approximate. They have not been formally delineated or surveyed and are intended for planning purposes only. Additional site-specific evaluation may be needed to confirm/verify information shown on this map.

Lewis County Coalition

