

Lewis County, Washington
Shoreline Master Program

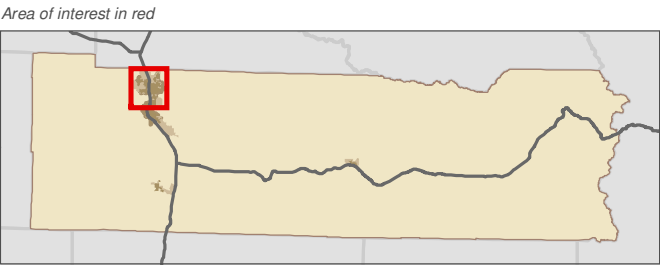
Map 13C - Erosion Hazard
Figure: Centralia

Date: 6/3/2014

Soil Erosion Hazard

- Very severe
- Severe
- Moderate
- Slight
- Not rated or not available
- SMA Rivers & Streams
- SMA Lakes
- Highways
- SMA Jurisdiction
- City
- UGA

0 0.225 0.45 Miles
1:37,000

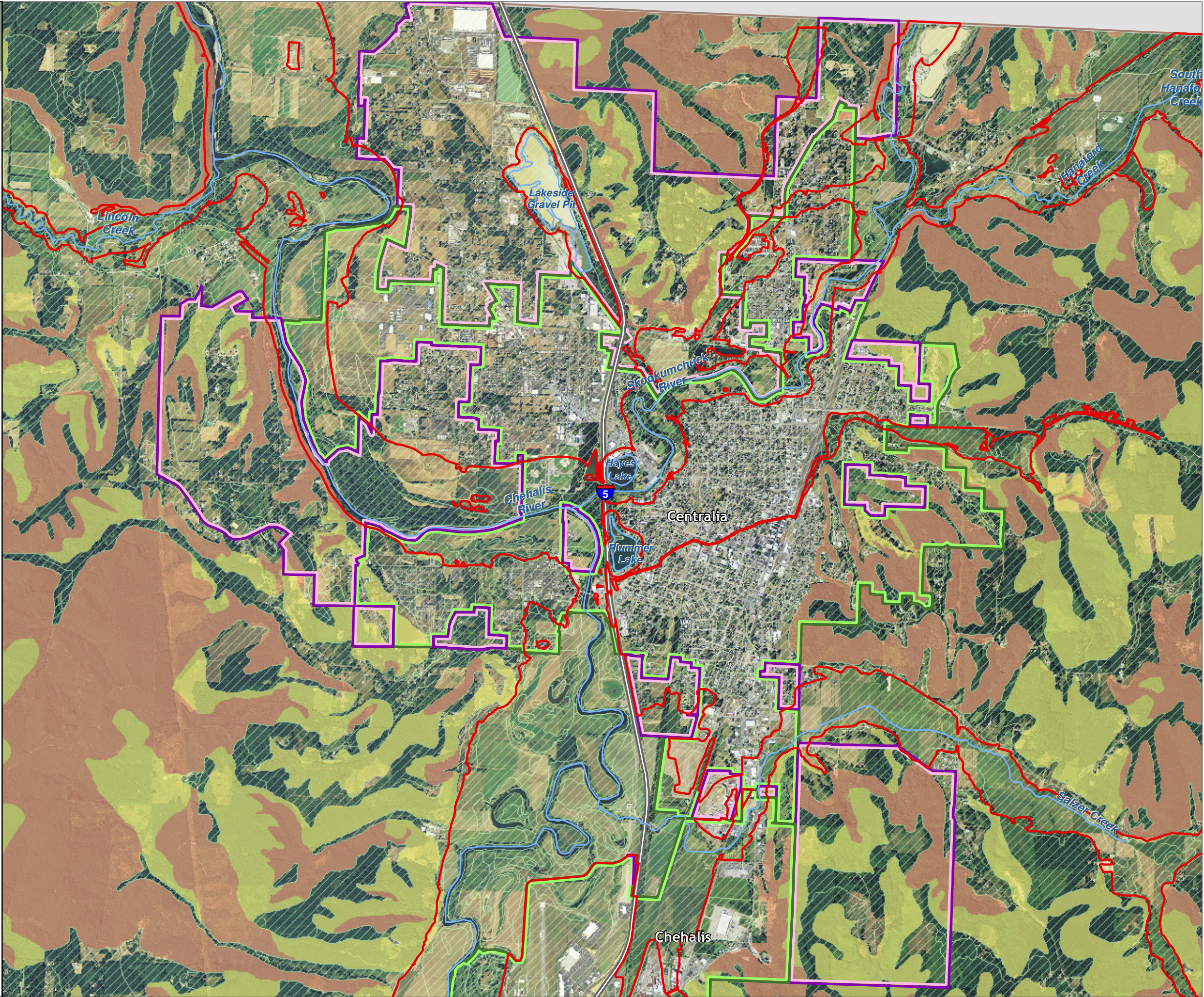


Data: Lewis County, USFWS NWI, FEMA, WA DNR, WSDOT, NRCS NAIP
Shoreline jurisdiction boundaries depicted on this map are approximate. They have not been formally delineated or surveyed and are intended for planning purposes only. Additional site-specific evaluation may be needed to confirm/verify information shown on this map.

Lewis County Coalition



City of Morton City of Winlock



Lewis County, Washington
Shoreline Master Program

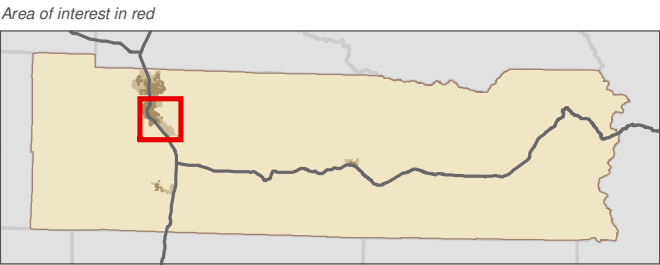
Map 13C - Erosion Hazard
Figure: Chehalis

Date: 6/3/2014

Soil Erosion Hazard

- Very severe
- Severe
- Moderate
- Slight
- Not rated or not available
- SMA Rivers & Streams
- SMA Lakes
- Highways
- SMA Jurisdiction
- City
- UGA

0 0.25 0.5 Miles
1:39,000

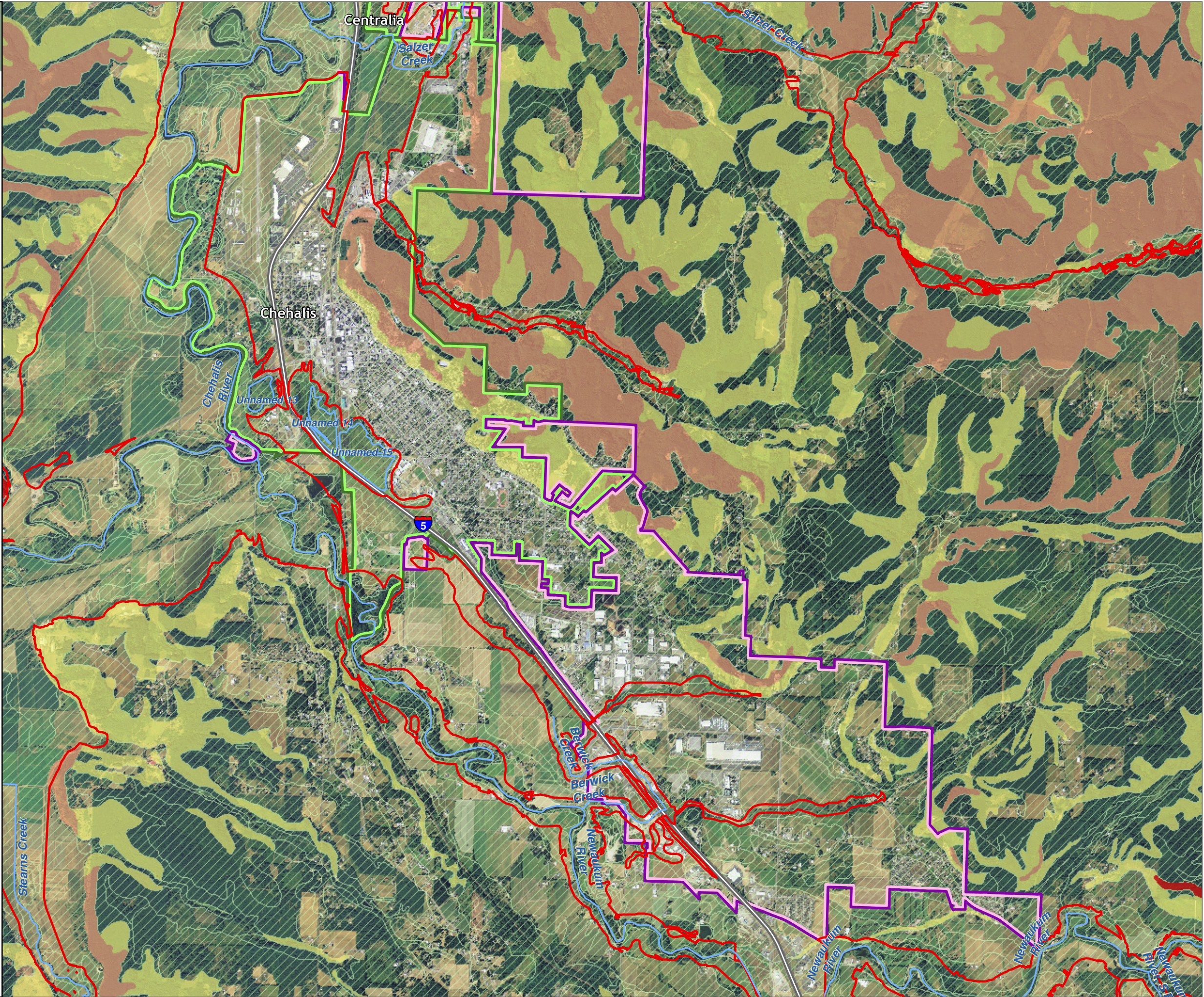


Data: Lewis County, USFWS NWI, FEMA, WA DNR, WSDOT, NRCS NAIP
Shoreline jurisdiction boundaries depicted on this map are approximate. They have not been formally delineated or surveyed and are intended for planning purposes only. Additional site-specific evaluation may be needed to confirm/verify information shown on this map.

Lewis County Coalition



City of Morton City of Winlock



Lewis County, Washington
Shoreline Master Program

Map 13C - Erosion Hazard
Figure: Winlock

Date: 6/3/2014

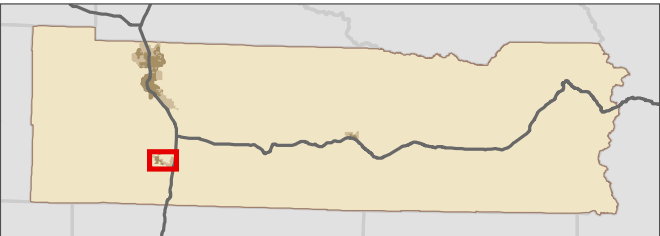
Soil Erosion Hazard

- Very severe
- Severe
- Moderate
- Slight
- Not rated or not available
- SMA Rivers & Streams
- SMA Lakes
- Highways
- SMA Jurisdiction
- City
- UGA

0 0.125 0.25 Miles
1:21,000



Area of interest in red

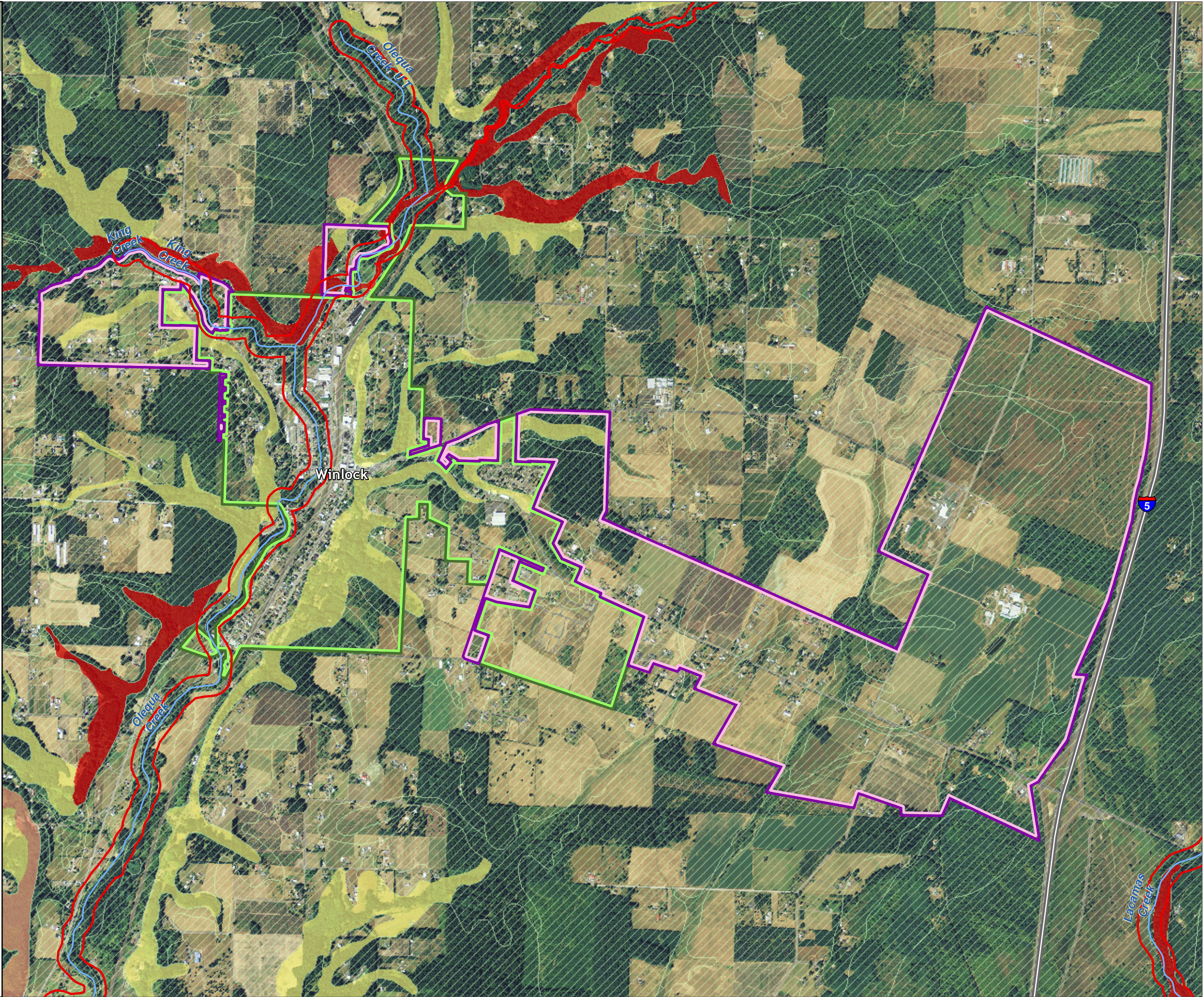


Data: Lewis County, USFWS NWI, FEMA, WA DNR, WSDOT, NRCS NAIP
Shoreline jurisdiction boundaries depicted on this map are approximate. They have not been formally delineated or surveyed and are intended for planning purposes only. Additional site-specific evaluation may be needed to confirm/verify information shown on this map.

Lewis County Coalition



City of Morton City of Winlock



Lewis County, Washington
Shoreline Master Program

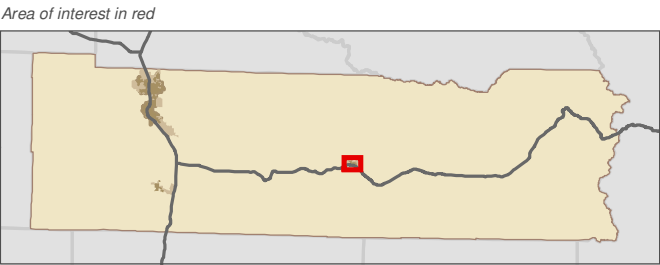
Map 13C - Erosion Hazard
Figure: Morton

Date: 6/3/2014

Soil Erosion Hazard

- Very severe
- Severe
- Moderate
- Slight
- Not rated or not available
- SMA Rivers & Streams
- SMA Lakes
- Highways
- SMA Jurisdiction
- City
- UGA

0 0.075 0.15 Miles
1:13,000



Data: Lewis County, USFWS NWI, FEMA, WA DNR, WSDOT, NRCS NAIP
Shoreline jurisdiction boundaries depicted on this map are approximate. They have not been formally delineated or surveyed and are intended for planning purposes only. Additional site-specific evaluation may be needed to confirm/verify information shown on this map.

Lewis County Coalition



City of Morton City of Winlock

