

Lewis County, Washington
Shoreline Master Program

Map 14D - Landslide Hazards
Figure 1

Date: 6/3/2014

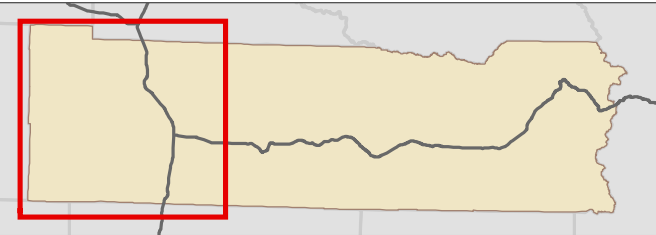
- Landslide Hazard**
- Very high instability potential
 - High instability potential
 - Moderate instability potential
 - Indeterminate instability potential
 - Variable instability potential
 - Low instability potential
 - Unknown instability potential
- SMA Rivers & Streams
- SMA Lakes
- Highways
- Parcels
- SMA Jurisdiction
- City
- UGA

0 1.5 3 Miles

1:188,000



Area of interest in red



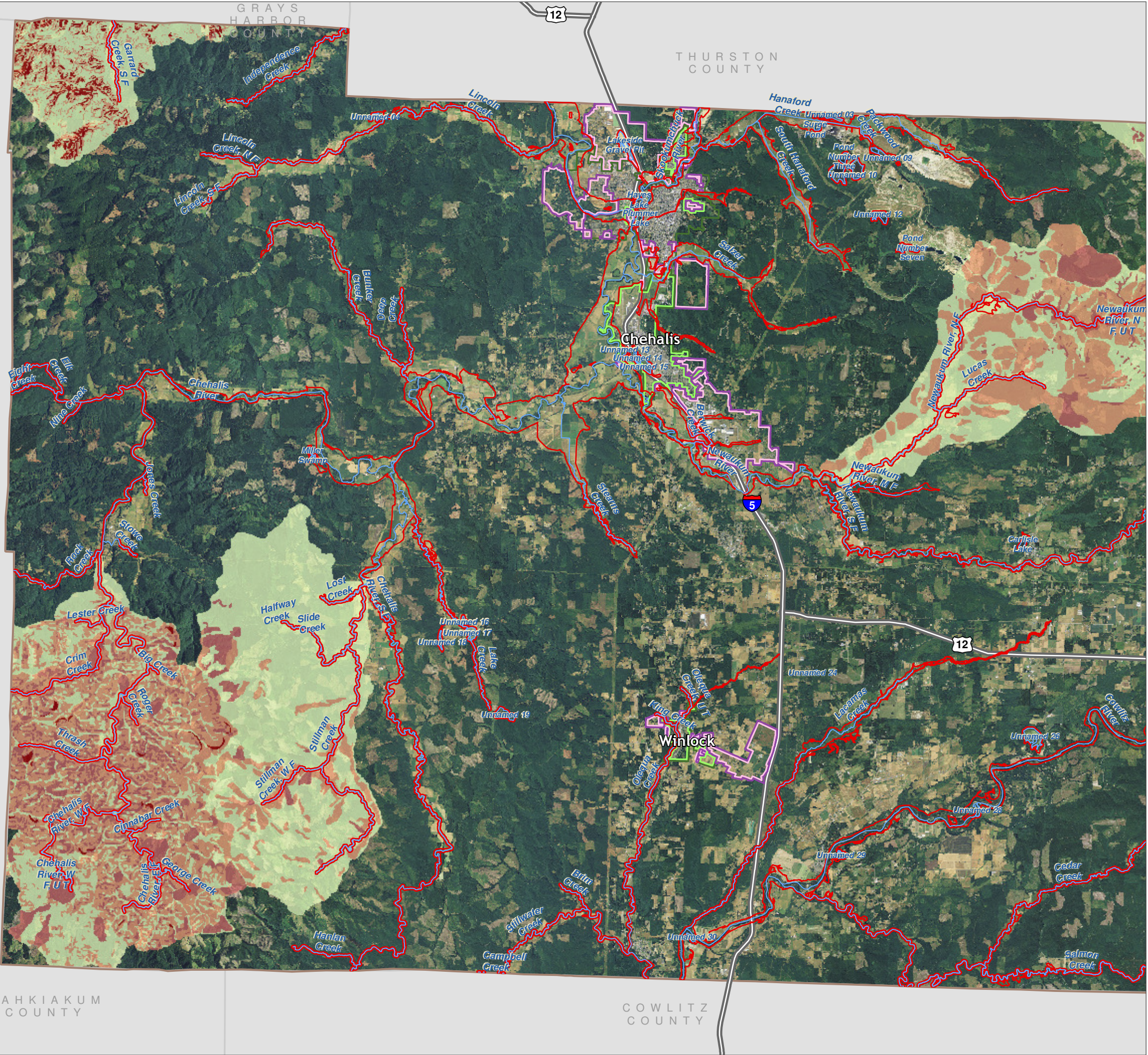
Data: Lewis County, USFWS NWI, FEMA,
WA DNR, WSDOT, NRCS NAIP

Shoreline jurisdiction boundaries depicted on this map are approximate. They have not been formally delineated or surveyed and are intended for planning purposes only. Additional site-specific evaluation may be needed to confirm/verify information shown on this map.

Lewis County Coalition



City of Morton City of Winlock

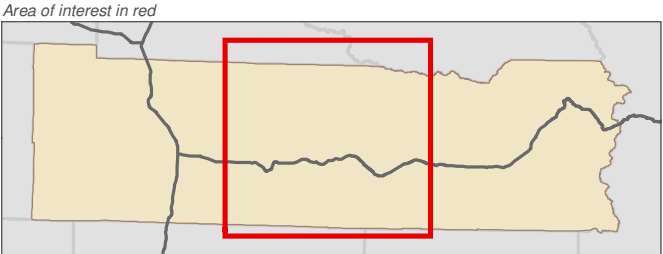
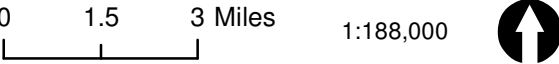


Lewis County, Washington
Shoreline Master Program

Map 14D - Landslide Hazards
Figure 2

Date: 6/3/2014

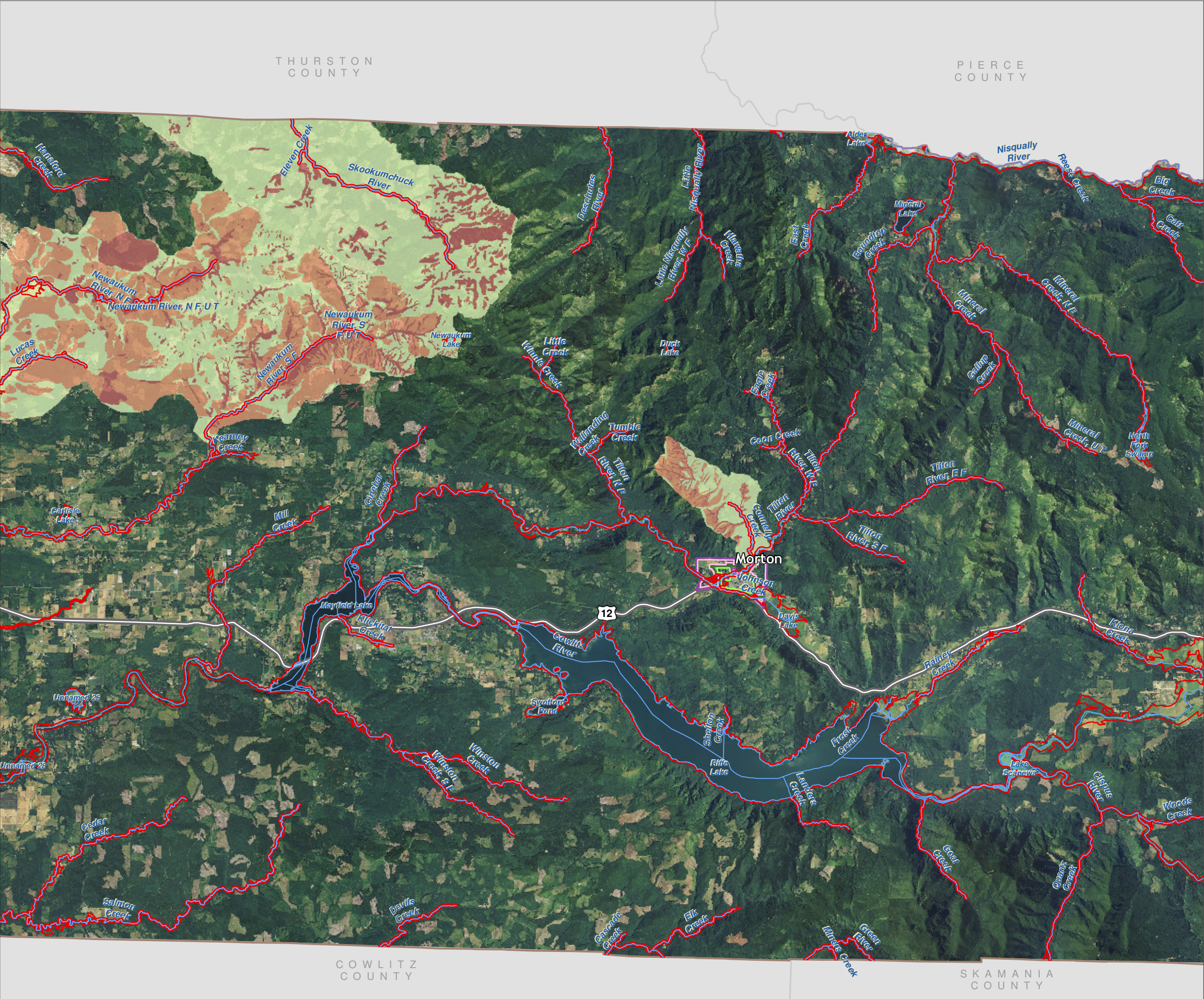
- Landslide Hazard**
- Very high instability potential
 - High instability potential
 - Moderate instability potential
 - Indeterminate instability potential
 - Variable instability potential
 - Low instability potential
 - Unknown instability potential
- SMA Rivers & Streams
- SMA Lakes
- Highways
- Parcels
- SMA Jurisdiction
- City
- UGA



Data: Lewis County, USFWS NWI, FEMA, WA DNR, WSDOT, NRCS NAIP

Shoreline jurisdiction boundaries depicted on this map are approximate. They have not been formally delineated or surveyed and are intended for planning purposes only. Additional site-specific evaluation may be needed to confirm/verify information shown on this map.

Lewis County Coalition

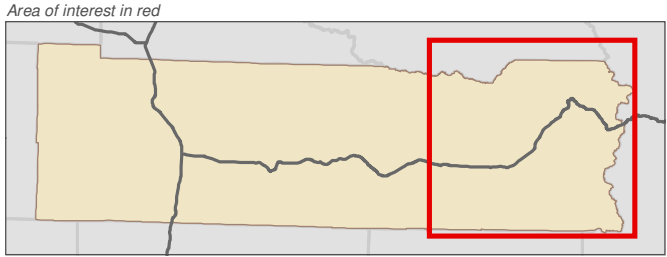
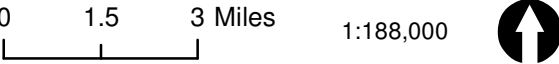


Lewis County, Washington
Shoreline Master Program

Map 14D - Landslide Hazards
Figure 3

Date: 6/3/2014

- Landslide Hazard**
- Very high instability potential
 - High instability potential
 - Moderate instability potential
 - Indeterminate instability potential
 - Variable instability potential
 - Low instability potential
 - Unknown instability potential
- SMA Rivers & Streams
- SMA Lakes
- Highways
- Parcels
- SMA Jurisdiction
- City
- UGA



Data: Lewis County, USFWS NWI, FEMA, WA DNR, WSDOT, NRCS NAIP

Shoreline jurisdiction boundaries depicted on this map are approximate. They have not been formally delineated or surveyed and are intended for planning purposes only. Additional site-specific evaluation may be needed to confirm/verify information shown on this map.

Lewis County Coalition



City of Morton City of Winlock

