

Lewis County, Washington  
Shoreline Master Program

Map 15C - NLCD Vegetation (2001)

Figure: Centralia

Date: 6/3/2014

NLCD Vegetation/Land  
Cover

- Agricultural Vegetation
- Aquatic Vegetation
- Developed & Other Human Use
- Forest & Woodland
- Nonvascular & Sparse Vascular Rock Vegetation
- Open Water
- Recently Disturbed or Modified
- Shrubland & Grassland

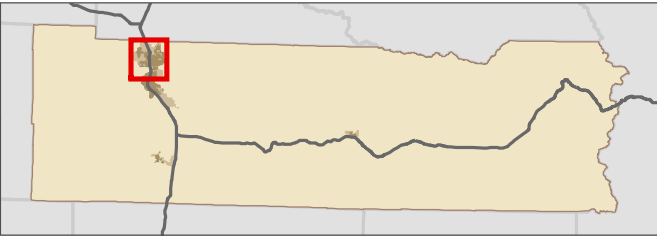
- SMA Rivers & Streams
- SMA Lakes
- Highways
- SMA Jurisdiction
- City
- UGA

0 0.25 0.5 Miles

1:37,000



Area of interest in red



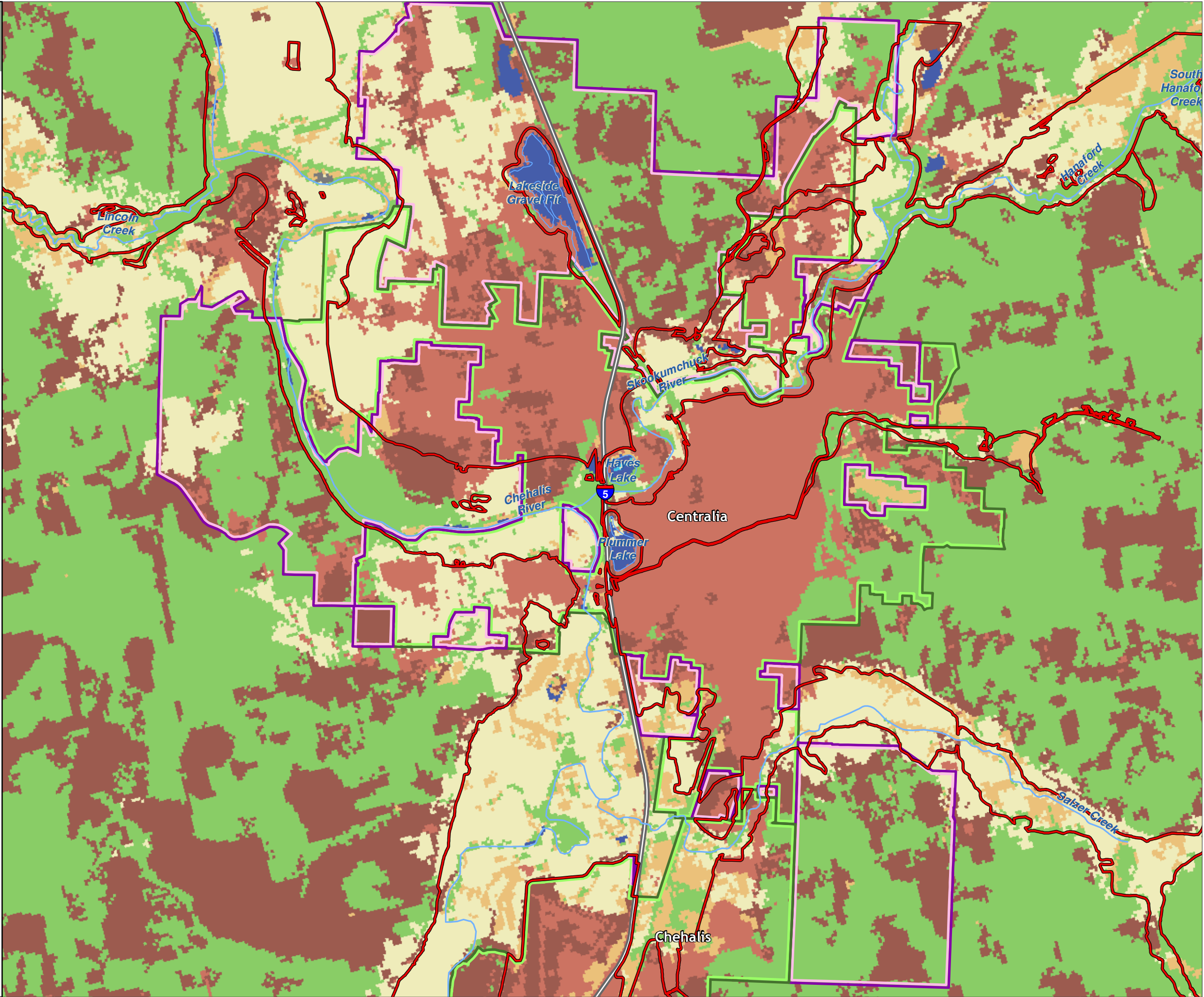
Data: Lewis County, USFWS NWI, FEMA,  
WA DNR, WSDOT, NRCS NAIP

Shoreline jurisdiction boundaries depicted on this map are approximate. They have not been formally delineated or surveyed and are intended for planning purposes only. Additional site-specific evaluation may be needed to confirm/verify information shown on this map.

Lewis County Coalition



City of Morton City of Winlock





Lewis County, Washington  
Shoreline Master Program

Map 15C - NLCD Vegetation (2001)  
Figure: Chehalis

Date: 6/3/2014

NLCD Vegetation/Land  
Cover

- Agricultural Vegetation
- Developed & Other Human Use
- Forest & Woodland
- Open Water
- Recently Disturbed or Modified
- Shrubland & Grassland

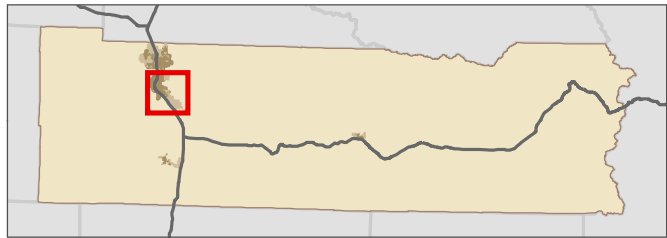
- SMA Rivers & Streams
- SMA Lakes
- Highways
- SMA Jurisdiction
- City
- UGA

0 0.25 0.5 Miles

1:39,000

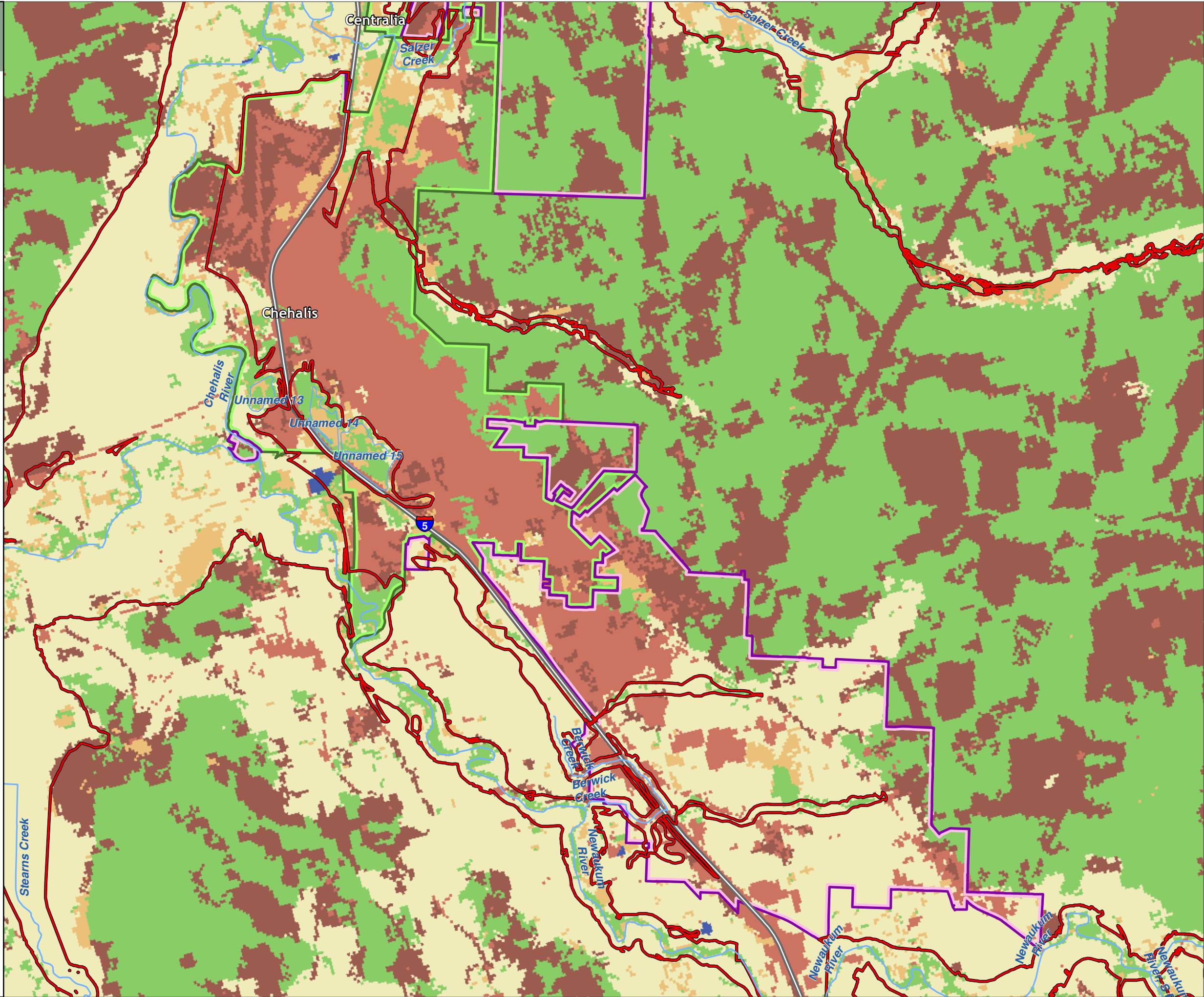


Area of interest in red



Data: Lewis County, USFWS NWI, FEMA, WA DNR, WSDOT, NRCS NAIP  
Shoreline jurisdiction boundaries depicted on this map are approximate. They have not been formally delineated or surveyed and are intended for planning purposes only. Additional site-specific evaluation may be needed to confirm/verify information shown on this map.

Lewis County Coalition



Lewis County, Washington  
Shoreline Master Program

Map 15C - NLCD Vegetation (2001)  
Figure: Winlock

Date: 6/3/2014

NLCD Vegetation/Land  
Cover

- Agricultural Vegetation
- Developed & Other Human Use
- Forest & Woodland
- Nonvascular & Sparse Vascular Rock Vegetation
- Recently Disturbed or Modified
- Shrubland & Grassland

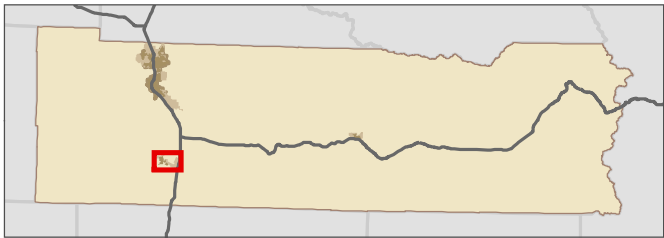
- SMA Rivers & Streams
- SMA Lakes
- Highways
- SMA Jurisdiction
- City
- UGA

0 0.125 0.25 Miles

1:21,000



Area of interest in red



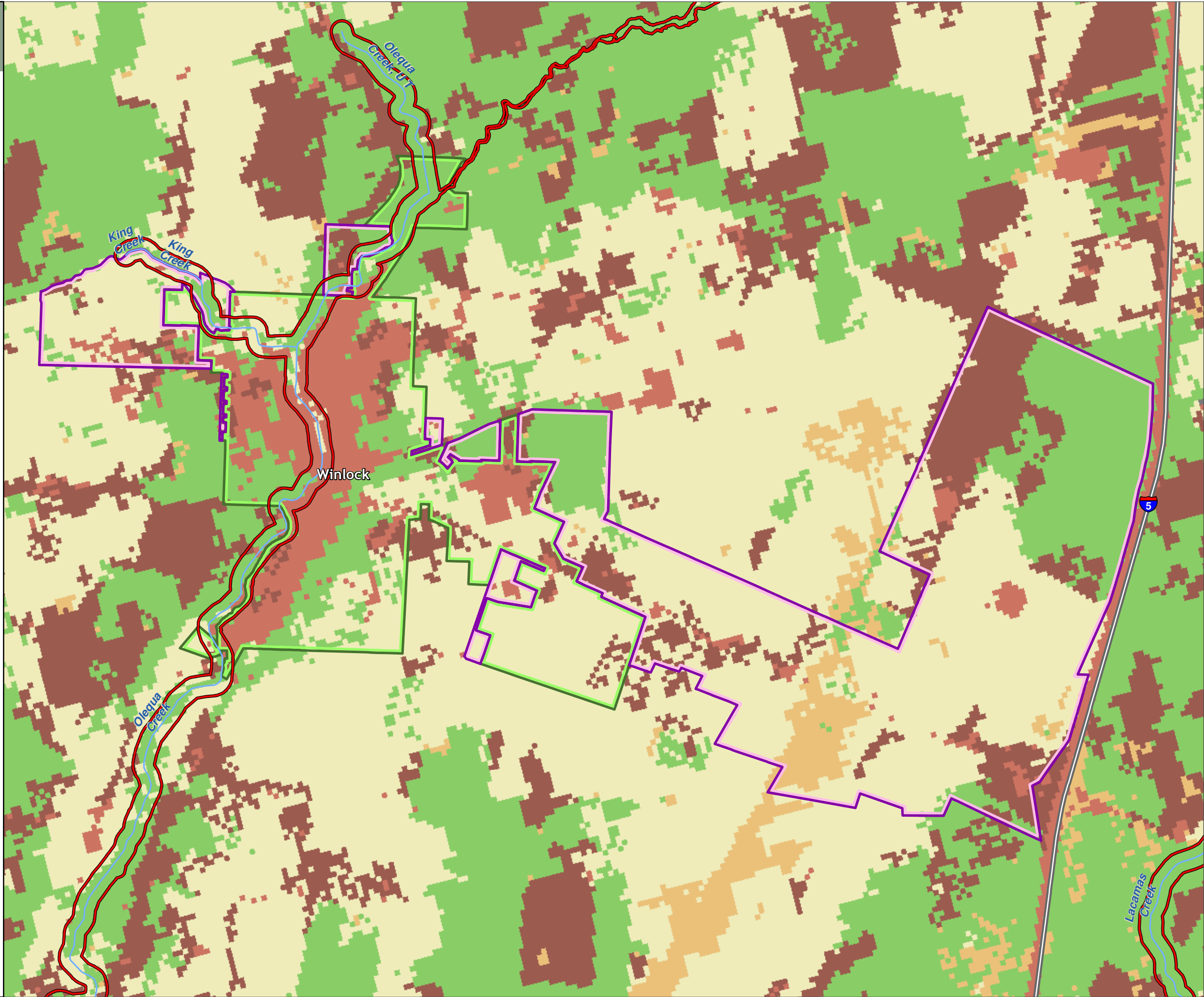
Data: Lewis County, USFWS NWI, FEMA,  
WA DNR, WSDOT, NRCS NAIP

Shoreline jurisdiction boundaries depicted on this map are approximate. They have not been formally delineated or surveyed and are intended for planning purposes only. Additional site-specific evaluation may be needed to confirm/verify information shown on this map.

Lewis County Coalition



City of Morton City of Winlock





Lewis County, Washington  
Shoreline Master Program

Map 15C - NLCD Vegetation (2001)  
Figure: Morton

Date: 6/3/2014

NLCD Vegetation/Land  
Cover

- Agricultural Vegetation
- Developed & Other Human Use
- Forest & Woodland
- Nonvascular & Sparse Vascular Rock Vegetation
- Open Water
- Recently Disturbed or Modified
- Shrubland & Grassland

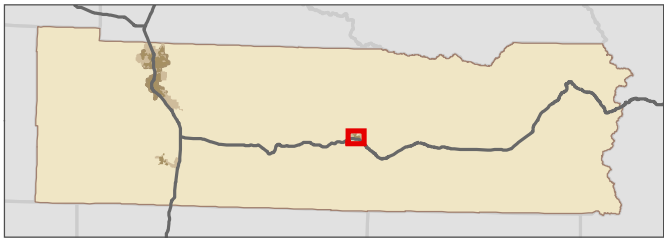
- SMA Rivers & Streams
- SMA Lakes
- Highways
- SMA Jurisdiction
- City
- UGA

0 0.075 0.15 Miles

1:13,000



Area of interest in red



Data: Lewis County, USFWS NWI, FEMA,  
WA DNR, WSDOT, NRCS NAIP

Shoreline jurisdiction boundaries depicted on this map are approximate. They have not been formally delineated or surveyed and are intended for planning purposes only. Additional site-specific evaluation may be needed to confirm/verify information shown on this map.

Lewis County Coalition



City of Morton City of Winlock

