

Lewis County, Washington
Shoreline Master Program

Map 21C - Water Quality
303(d) Listed Waterbodies

Figure: Centralia

Date: 6/3/2014

303d Waterbodies by Category

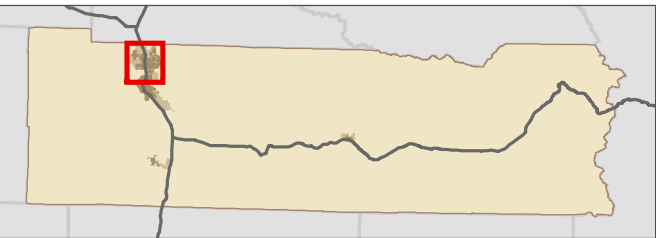
- Category 1
- Category 2
- Category 4a
- Category 4b
- Category 4c
- Category 5
- Highways
- SMA Jurisdiction
- City
- UGA

303d Categories:
Category 1: Meets tested standards
Category 2: Waters of concern
Category 4: Polluted waters that do not require a TMDL
4a: Approved TMDL control plan in place
4b: Approved pollution control plan in place
4c: Cause cannot be addressed through TMDL
Category 5: Polluted waters that require a TMDL

0 0.25 0.5 Miles 1:37,000



Area of interest in red



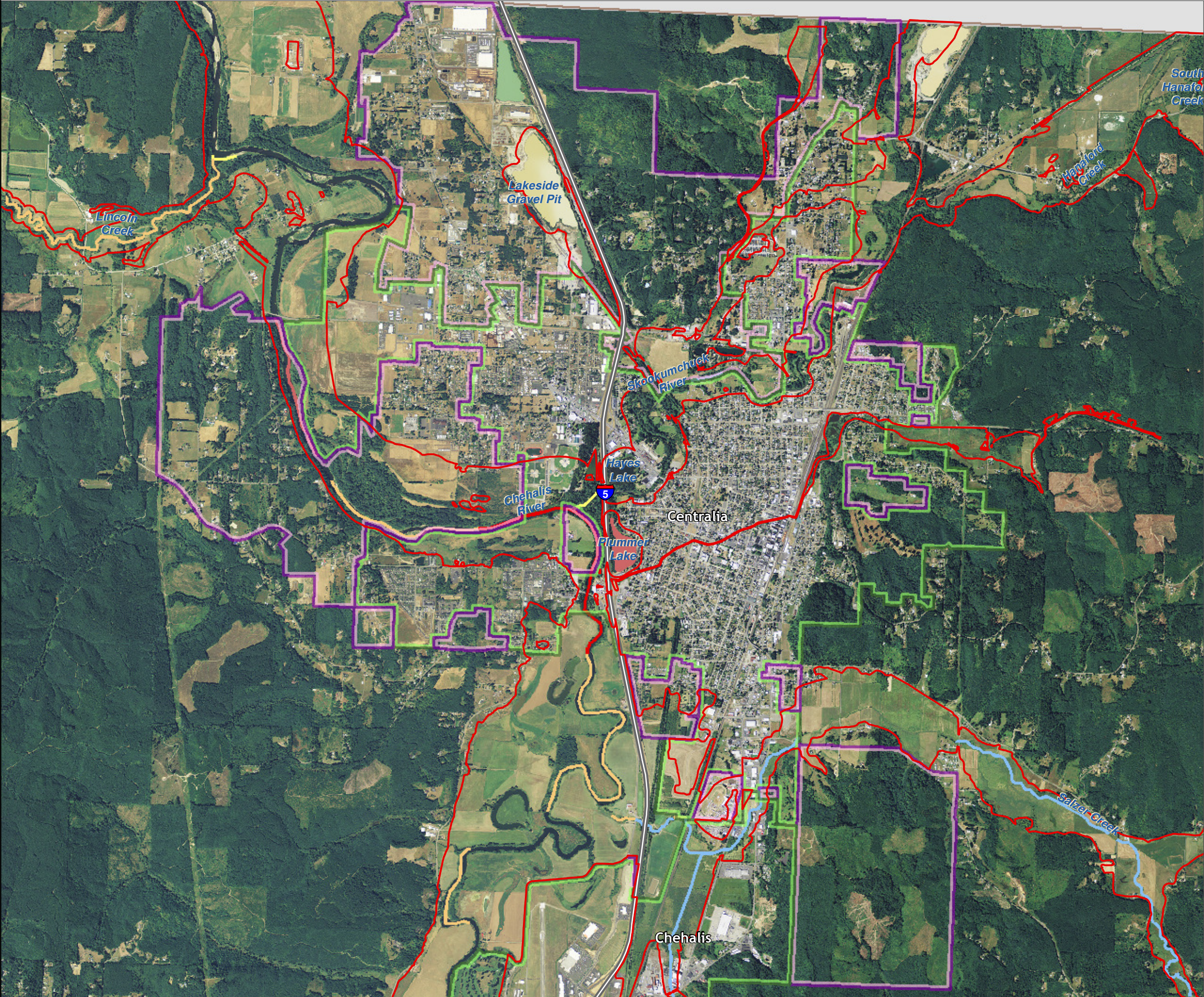
Data: Lewis County, USFWS NWI, FEMA, WA DNR, WSDOT, NRCS NAIP

Shoreline jurisdiction boundaries depicted on this map are approximate. They have not been formally delineated or surveyed and are intended for planning purposes only. Additional site-specific evaluation may be needed to confirm/verify information shown on this map.

Lewis County Coalition



City of Morton City of Winlock



Lewis County, Washington
Shoreline Master Program

Map 21C - Water Quality
303(d) Listed Waterbodies

Figure: Chehalis

Date: 6/3/2014

303d Waterbodies by Category

- Category 1
- Category 2
- Category 4a
- Category 4b
- Category 4c
- Category 5
- Highways
- SMA Jurisdiction
- City
- UGA

303d Categories:

Category 1: Meets tested standards

Category 2: Waters of concern

Category 4: Polluted waters that do not require a TMDL

4a: Approved TMDL control plan in place

4b: Approved pollution control plan in place

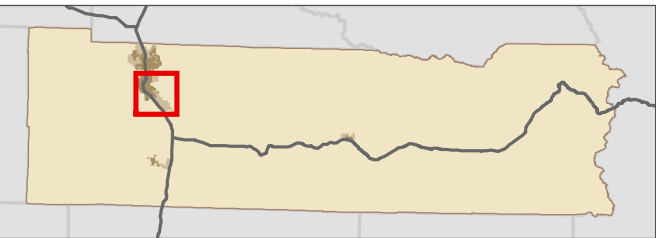
4c: Cause cannot be addressed through TMDL

Category 5: Polluted waters that require a TMDL

0 0.25 0.5 Miles 1:39,000



Area of interest in red



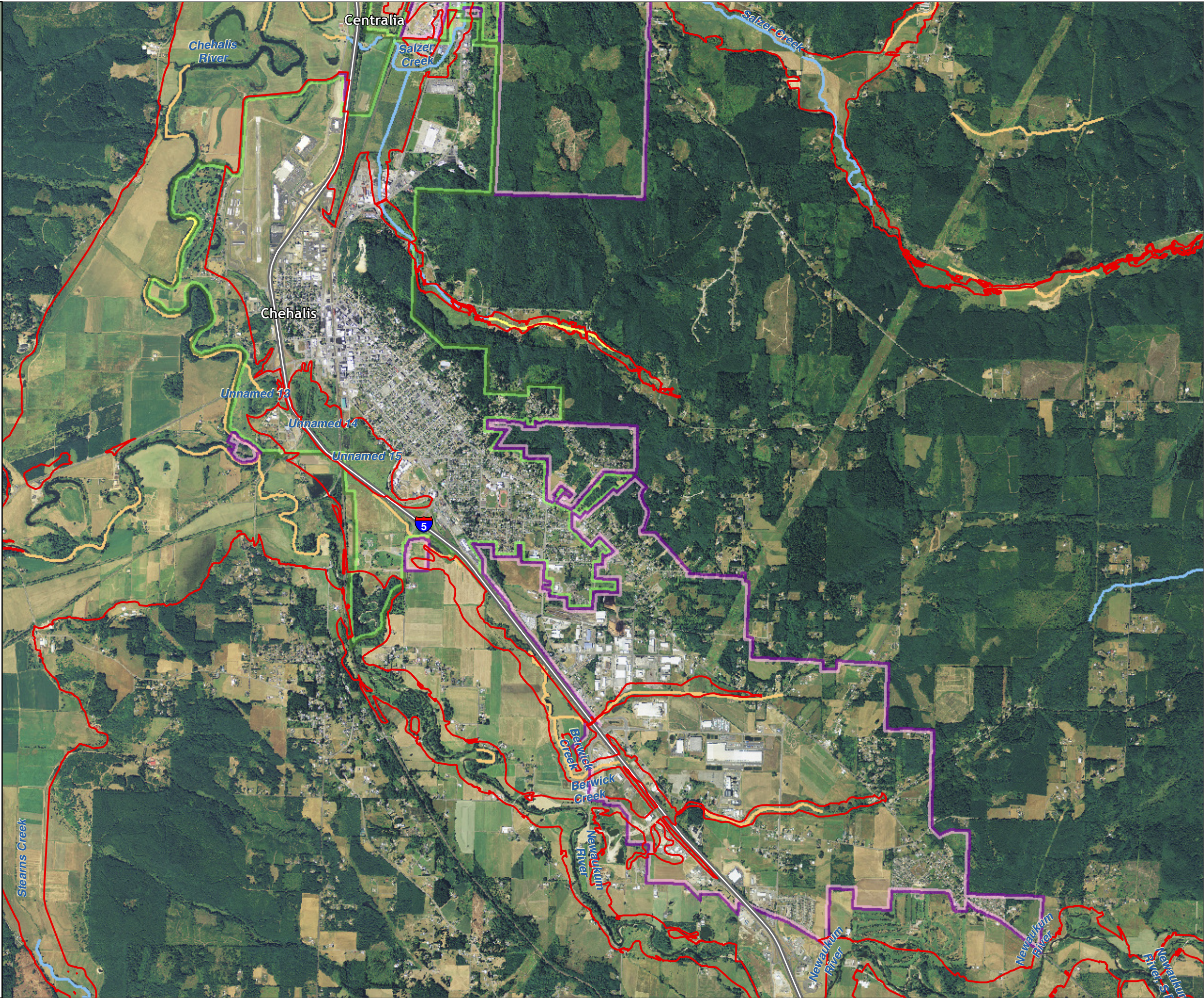
Data: Lewis County, USFWS NWI, FEMA,
WA DNR, WSDOT, NRCS NAIP

Shoreline jurisdiction boundaries depicted on this map are approximate. They have not been formally delineated or surveyed and are intended for planning purposes only. Additional site-specific evaluation may be needed to confirm/verify information shown on this map.

Lewis County Coalition



City of Morton City of Winlock



Lewis County, Washington
Shoreline Master Program

Map 21C - Water Quality
303(d) Listed Waterbodies

Figure: Morton

Date: 6/3/2014

303d Waterbodies by Category

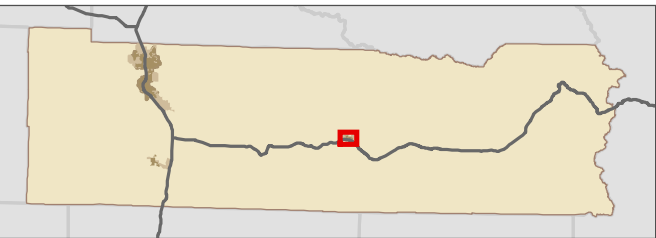
- Category 1
- Category 2
- Category 4a
- Category 4b
- Category 4c
- Category 5
- Highways
- SMA Jurisdiction
- City
- UGA

303d Categories:
Category 1: Meets tested standards
Category 2: Waters of concern
Category 4: Polluted waters that do not require a TMDL
 4a: Approved TMDL control plan in place
 4b: Approved pollution control plan in place
 4c: Cause cannot be addressed through TMDL
Category 5: Polluted waters that require a TMDL

0 0.075 0.15 Miles 1:13,000



Area of interest in red

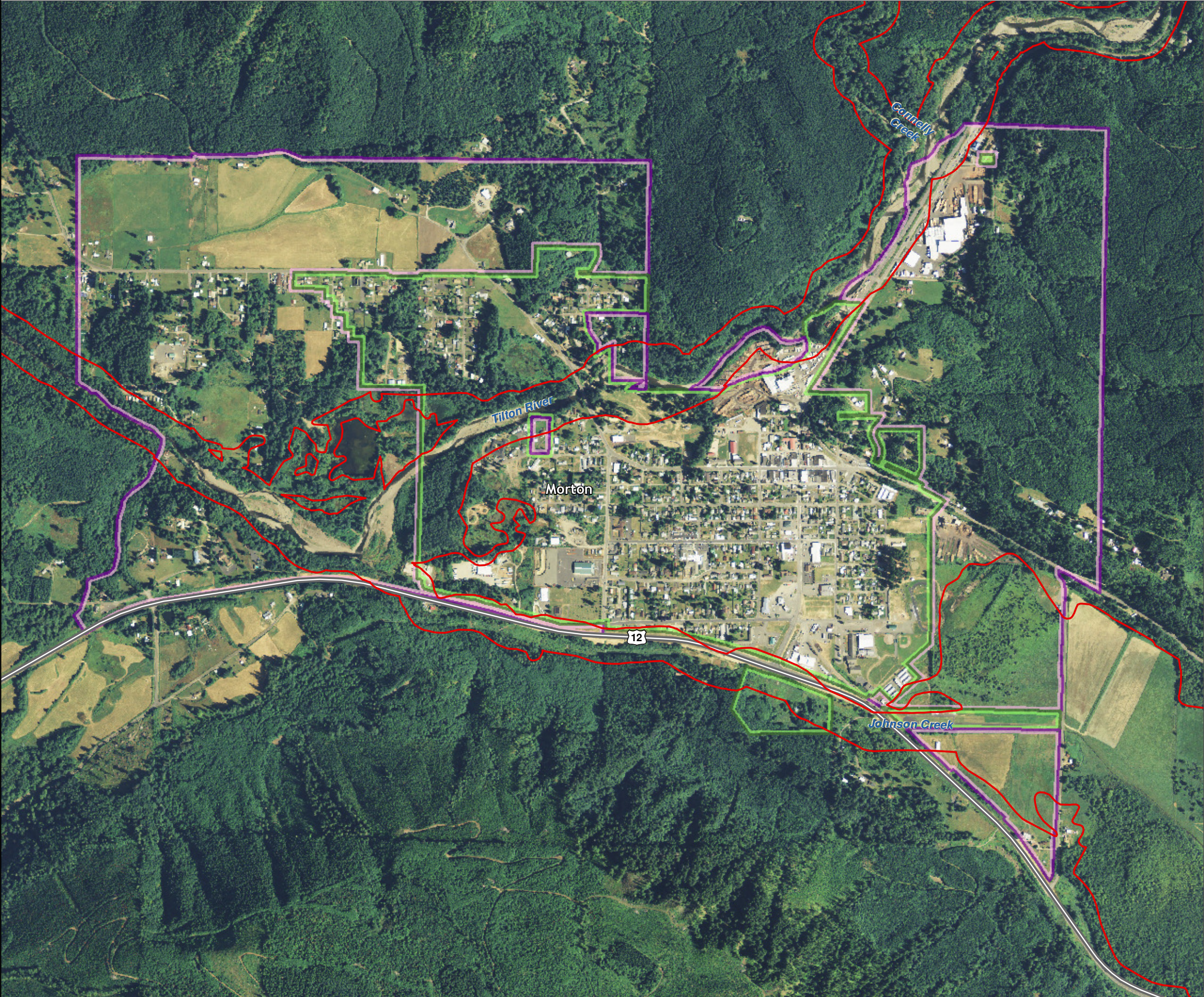


Data: Lewis County, USFWS NWI, FEMA, WA DNR, WSDOT, NRCS NAIP
Shoreline jurisdiction boundaries depicted on this map are approximate. They have not been formally delineated or surveyed and are intended for planning purposes only. Additional site-specific evaluation may be needed to confirm/verify information shown on this map.

Lewis County Coalition



City of Morton City of Winlock



Lewis County, Washington
Shoreline Master Program

Map 21C - Water Quality
303(d) Listed Waterbodies

Figure: Winlock

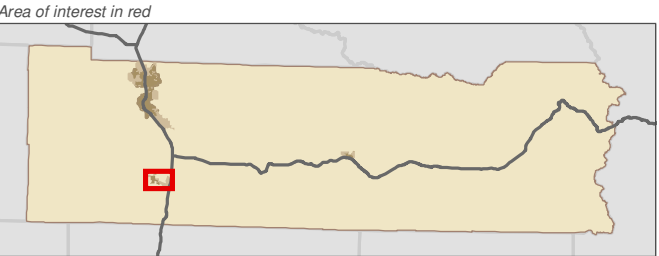
Date: 6/3/2014

303d Waterbodies by Category

- Category 1
- Category 2
- Category 4a
- Category 4b
- Category 4c
- Category 5
- Highways
- SMA Jurisdiction
- City
- UGA

303d Categories:
Category 1: Meets tested standards
Category 2: Waters of concern
Category 4: Polluted waters that do not require a TMDL
4a: Approved TMDL control plan in place
4b: Approved pollution control plan in place
4c: Cause cannot be addressed through TMDL
Category 5: Polluted waters that require a TMDL

0 0.125 0.25 Miles 1:21,000



Data: Lewis County, USFWS NWI, FEMA, WA DNR, WSDOT, NRCS NAIP
Shoreline jurisdiction boundaries depicted on this map are approximate. They have not been formally delineated or surveyed and are intended for planning purposes only. Additional site-specific evaluation may be needed to confirm/verify information shown on this map.

Lewis County Coalition



City of Morton City of Winlock

