

Lewis County, Washington  
Shoreline Master Program

Map 21D - Water Quality  
303(d) Listed Waterbodies

Figure 1

Date: 6/3/2014

303d Waterbodies by Category

- Category 1

Category 2

Category 4a

Category 4b

Category 4c

Category 5
- SMA Rivers & Streams

SMA Lakes

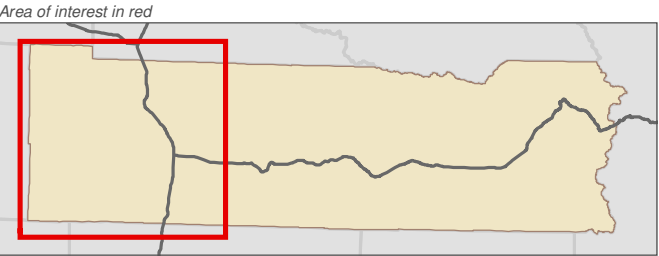
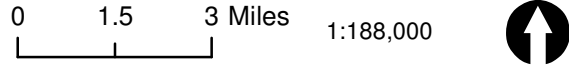
Highways

SMA Jurisdiction

City

UGA

**303d Categories:**  
**Category 1:** Meets tested standards  
**Category 2:** Waters of concern  
**Category 4:** Polluted waters that do not require a TMDL  
    **4a:** Approved TMDL control plan in place  
    **4b:** Approved pollution control plan in place  
    **4c:** Cause cannot be addressed through TMDL  
**Category 5:** Polluted waters that require a TMDL



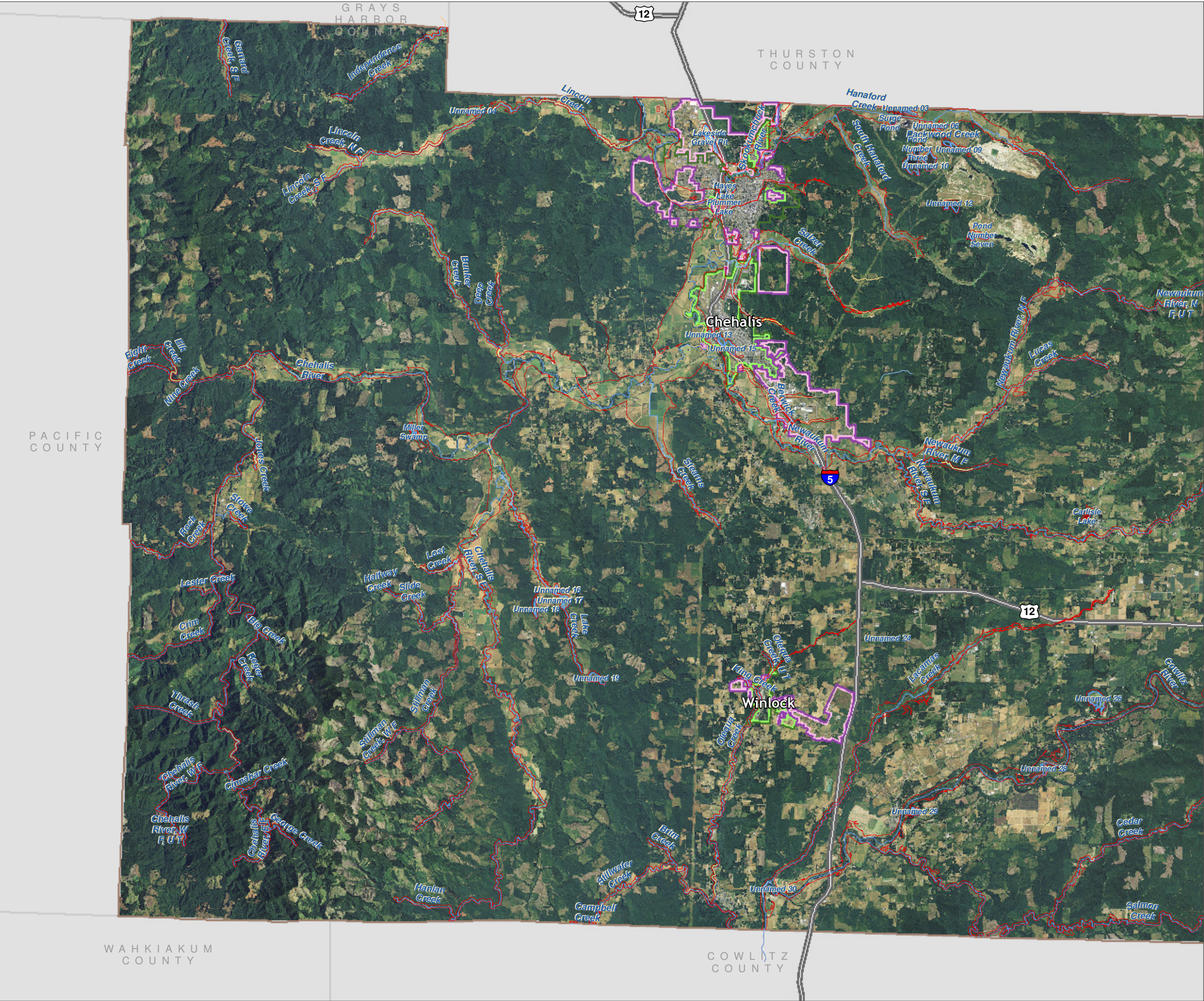
Data: Lewis County, USFWS NWI, FEMA, WA DNR, WSDOT, NRCS NAIP

Shoreline jurisdiction boundaries depicted on this map are approximate. They have not been formally delineated or surveyed and are intended for planning purposes only. Additional site-specific evaluation may be needed to confirm/verify information shown on this map.

Lewis County Coalition



City of Morton City of Winlock





Lewis County, Washington  
Shoreline Master Program

Map 21D - Water Quality  
303(d) Listed Waterbodies

Figure 2

Date: 6/3/2014

303d Waterbodies by Category

- |             |                      |
|-------------|----------------------|
| Category 1  | SMA Rivers & Streams |
| Category 2  | SMA Lakes            |
| Category 4a | Highways             |
| Category 4b | SMA Jurisdiction     |
| Category 4c | City                 |
| Category 5  | UGA                  |

303d Categories:

Category 1: Meets tested standards

Category 2: Waters of concern

Category 4: Polluted waters that do not require a TMDL

4a: Approved TMDL control plan in place

4b: Approved pollution control plan in place

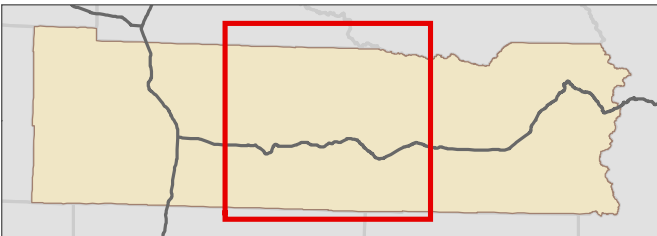
4c: Cause cannot be addressed through TMDL

Category 5: Polluted waters that require a TMDL

0 1.5 3 Miles 1:188,000



Area of interest in red



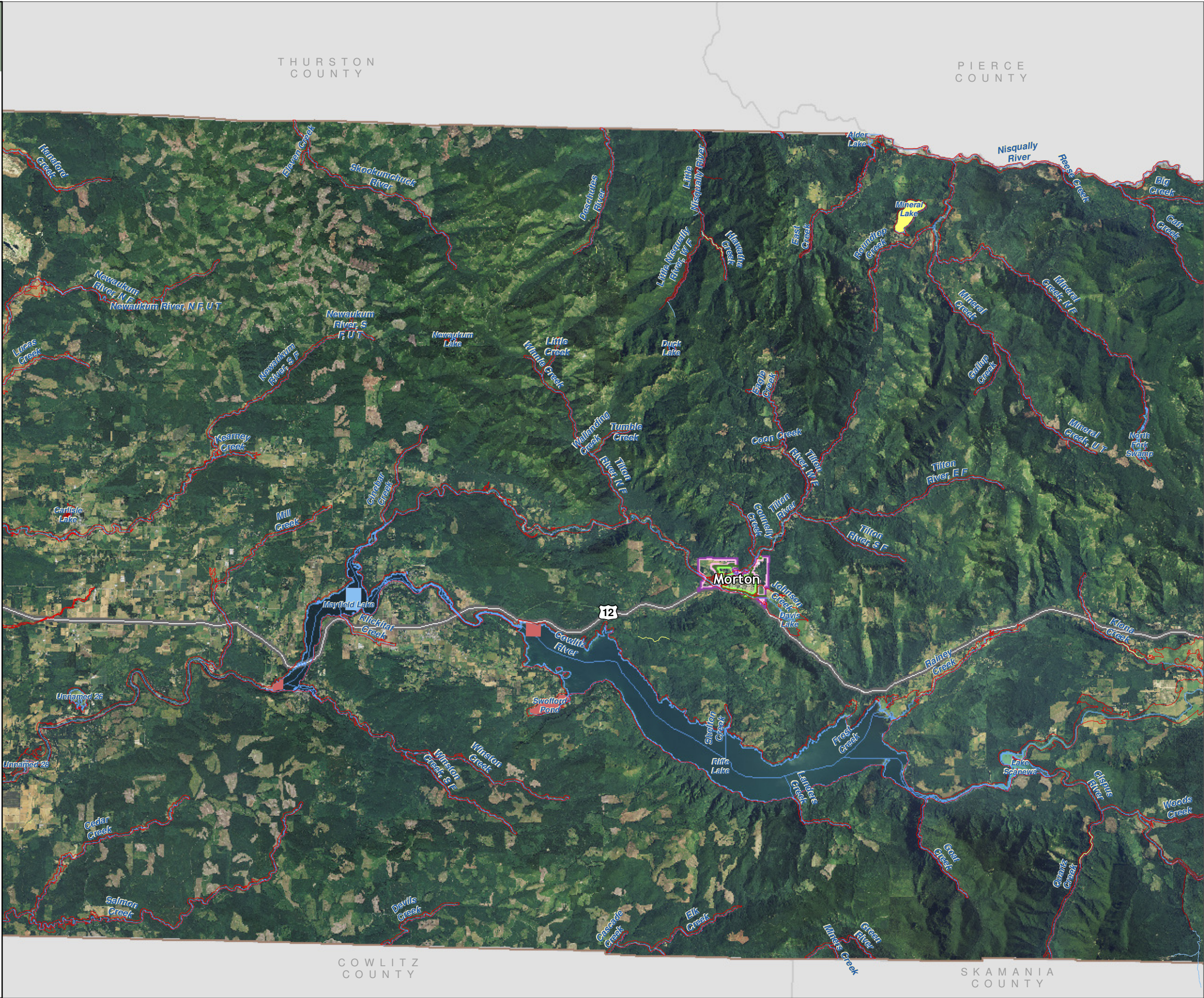
Data: Lewis County, USFWS NWI, FEMA,  
WA DNR, WSDOT, NRCS NAIP

Shoreline jurisdiction boundaries depicted on this map are approximate. They have not been formally delineated or surveyed and are intended for planning purposes only. Additional site-specific evaluation may be needed to confirm/verify information shown on this map.

Lewis County Coalition



City of Morton City of Winlock





Lewis County, Washington  
Shoreline Master Program

Map 21D - Water Quality  
303(d) Listed Waterbodies

Figure 3

Date: 6/3/2014

303d Waterbodies by Category

- |             |                      |
|-------------|----------------------|
| Category 1  | SMA Rivers & Streams |
| Category 2  | SMA Lakes            |
| Category 4a | Highways             |
| Category 4b | SMA Jurisdiction     |
| Category 4c | City                 |
| Category 5  | UGA                  |

303d Categories:

Category 1: Meets tested standards

Category 2: Waters of concern

Category 4: Polluted waters that do not require a TMDL

4a: Approved TMDL control plan in place

4b: Approved pollution control plan in place

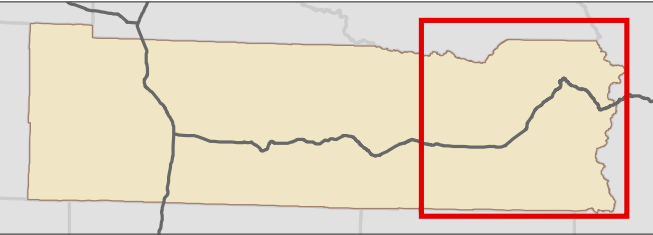
4c: Cause cannot be addressed through TMDL

Category 5: Polluted waters that require a TMDL

0 1.5 3 Miles 1:188,000



Area of interest in red



Data: Lewis County, USFWS NWI, FEMA,  
WA DNR, WSDOT, NRCS NAIP

Shoreline jurisdiction boundaries depicted on this map are approximate. They have not been formally delineated or surveyed and are intended for planning purposes only. Additional site-specific evaluation may be needed to confirm/verify information shown on this map.

Lewis County Coalition



City of Morton City of Winlock

