

Lewis County, Washington
Shoreline Master Program

Map 27C -
Local Habitat Assessment

Figure: Centralia

Date: 6/3/2014

Local Habitat Assessment

High Wildlife Habitat Value
Low Wildlife Habitat Value

SMA Rivers & Streams

SMA Lakes

Parcels

Highways

SMA Jurisdiction

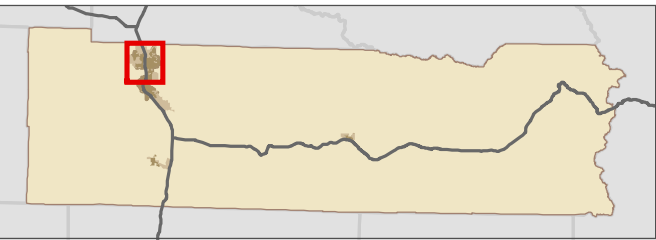
City

UGA

0 0.25 0.5 Miles 1:37,000



Area of interest in red



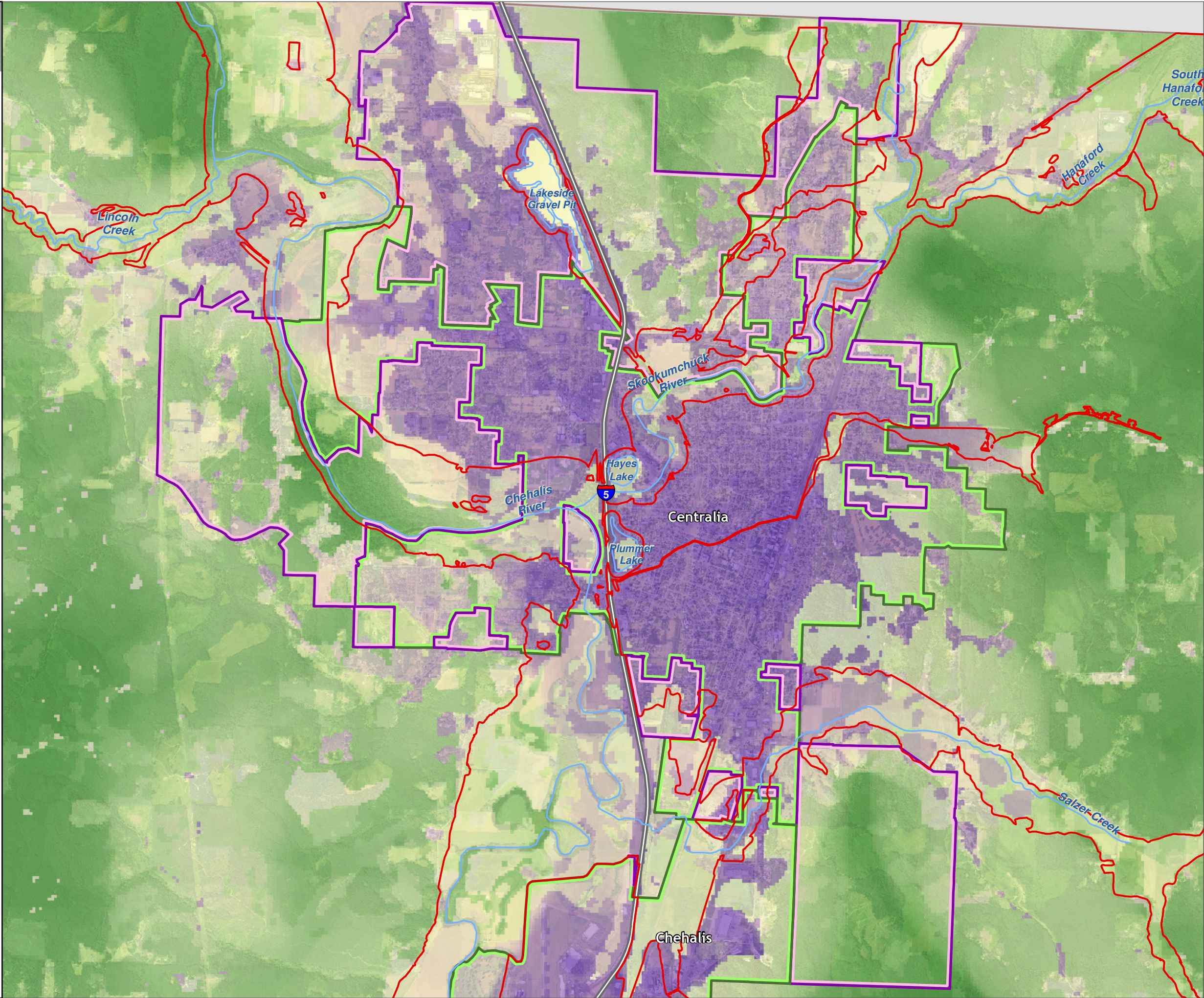
Data: Lewis County, USFWS NWI, FEMA,
WA DNR, WSDOT, NRCS NAIP

Shoreline jurisdiction boundaries depicted on this map are approximate. They have not been formally delineated or surveyed and are intended for planning purposes only. Additional site-specific evaluation may be needed to confirm/verify information shown on this map.

Lewis County Coalition



City of Morton City of Winlock



Lewis County, Washington
Shoreline Master Program

Map 27C -
Local Habitat Assessment

Figure: Chehalis

Date: 6/3/2014

Local Habitat Assessment

High Wildlife Habitat Value
Low Wildlife Habitat Value

SMA Rivers & Streams

SMA Lakes

Parcels

Highways

SMA Jurisdiction

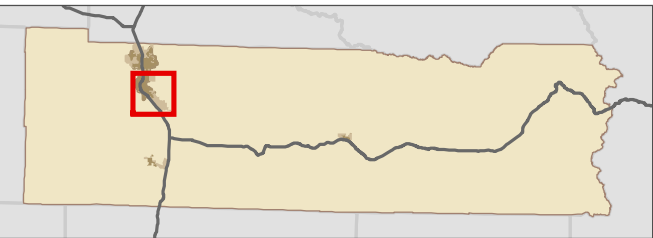
City

UGA

0 0.275 0.55 Miles 1:39,000



Area of interest in red



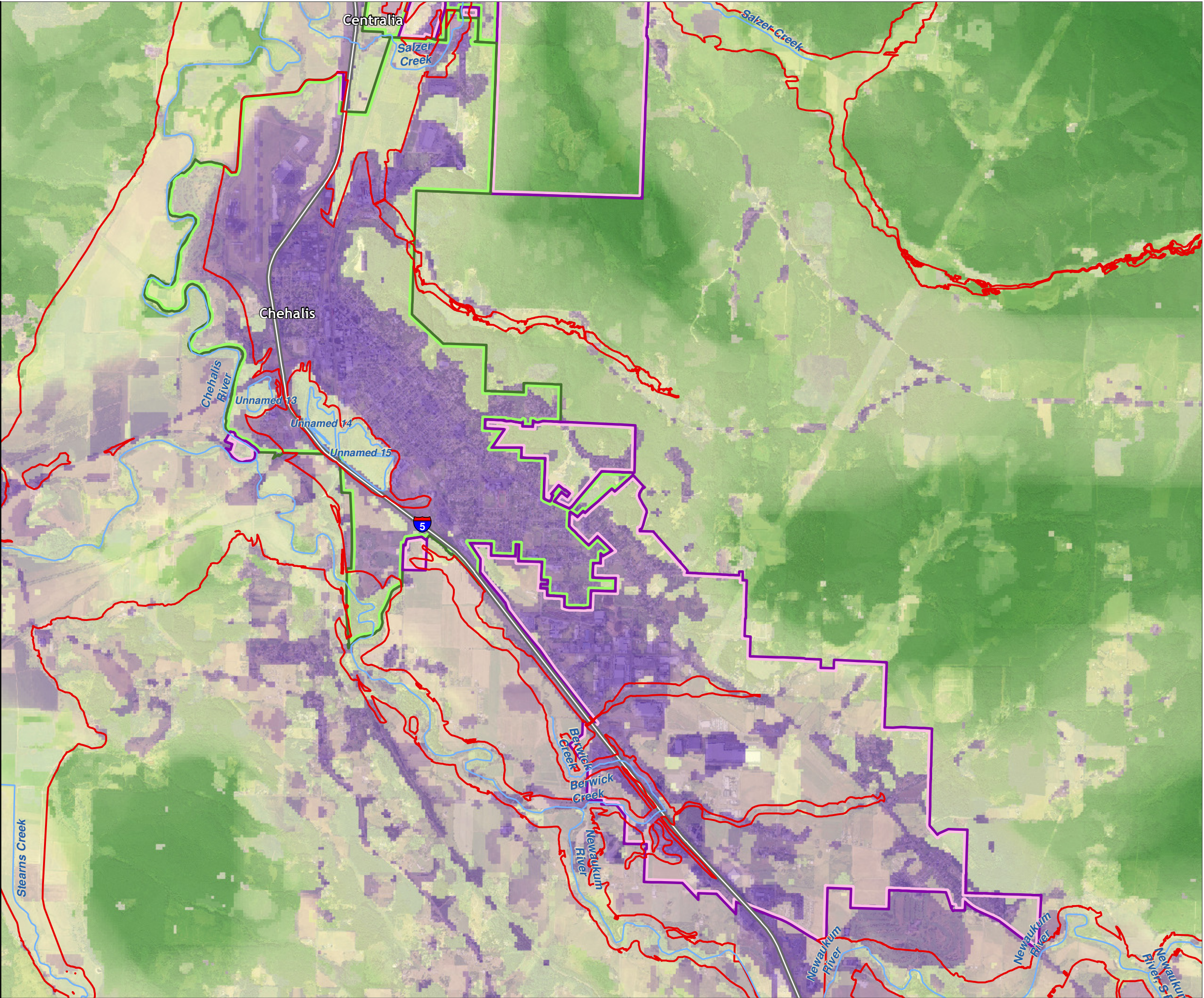
Data: Lewis County, USFWS NWI, FEMA,
WA DNR, WSDOT, NRCS NAIP

Shoreline jurisdiction boundaries depicted on this map are approximate. They have not been formally delineated or surveyed and are intended for planning purposes only. Additional site-specific evaluation may be needed to confirm/verify information shown on this map.

Lewis County Coalition



City of Morton City of Winlock



Lewis County, Washington
Shoreline Master Program

Map 27C -
Local Habitat Assessment

Figure: Winlock

Date: 6/3/2014

Local Habitat Assessment

High Wildlife Habitat Value
Low Wildlife Habitat Value

SMA Rivers & Streams

SMA Lakes

Parcels

Highways

SMA Jurisdiction

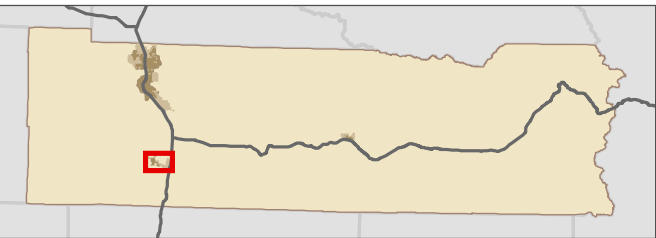
City

UGA

0 0.125 0.25 Miles
1:21,000



Area of interest in red



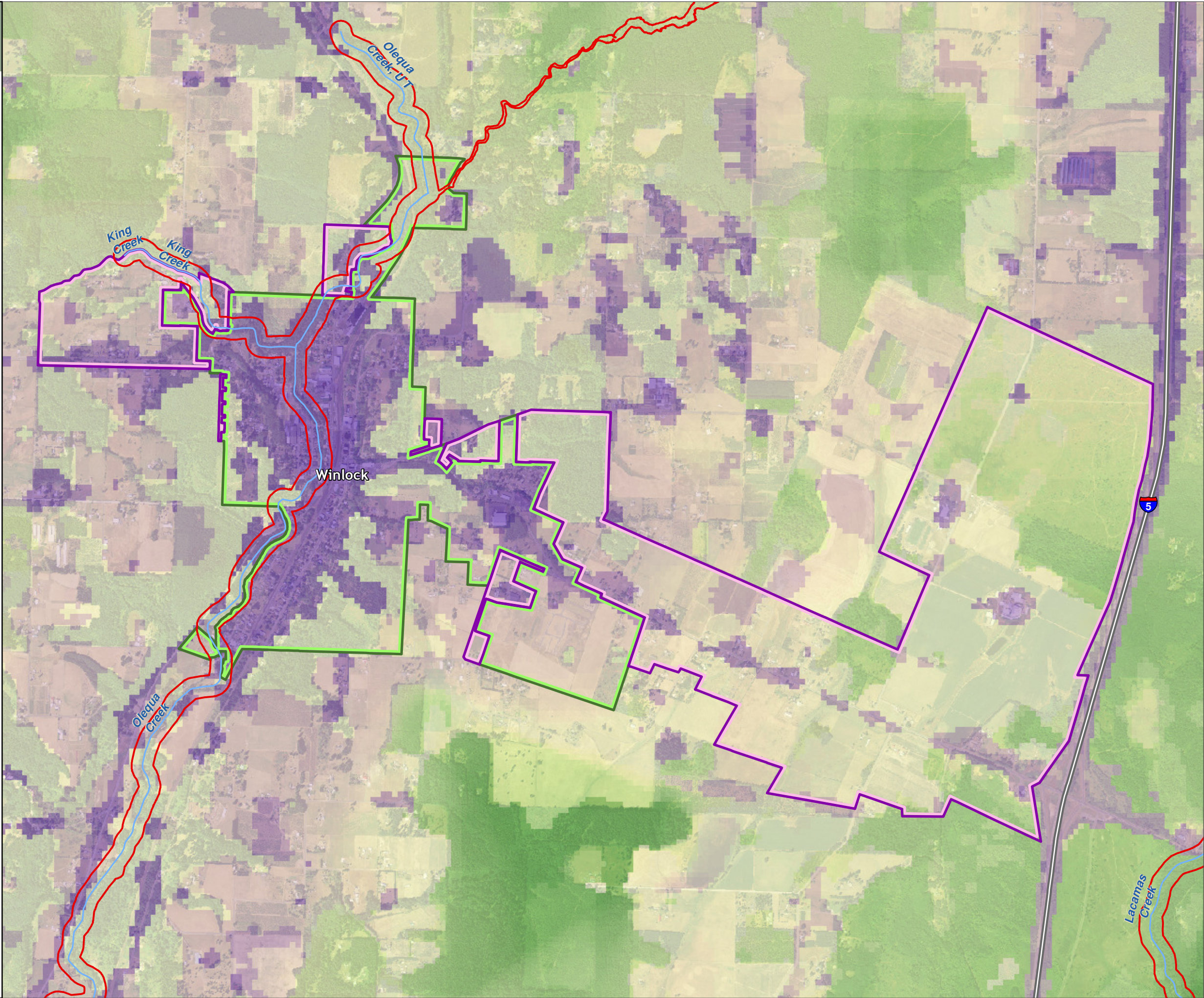
Data: Lewis County, USFWS NWI, FEMA,
WA DNR, WSDOT, NRCS NAIP

Shoreline jurisdiction boundaries depicted on this map are approximate. They have not been formally delineated or surveyed and are intended for planning purposes only. Additional site-specific evaluation may be needed to confirm/verify information shown on this map.

Lewis County Coalition



City of Morton City of Winlock



Lewis County, Washington
Shoreline Master Program

Map 27C -
Local Habitat Assessment

Figure: Morton
Date: 6/3/2014

Local Habitat Assessment
High Wildlife Habitat Value
Low Wildlife Habitat Value

SMA Rivers & Streams

SMA Lakes

Parcels

Highways

SMA Jurisdiction

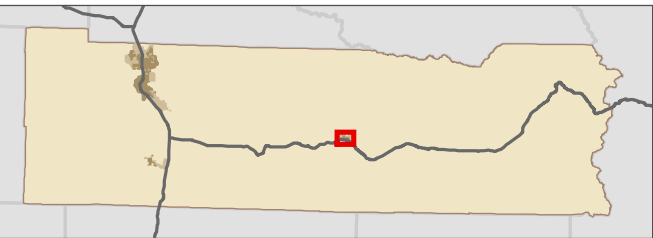
City

UGA

0 0.075 0.15 Miles
1:13,000



Area of interest in red



Data: Lewis County, USFWS NWI, FEMA, WA DNR, WSDOT, NRCS NAIP
Shoreline jurisdiction boundaries depicted on this map are approximate. They have not been formally delineated or surveyed and are intended for planning purposes only. Additional site-specific evaluation may be needed to confirm/verify information shown on this map.

Lewis County Coalition



City of Morton City of Winlock

