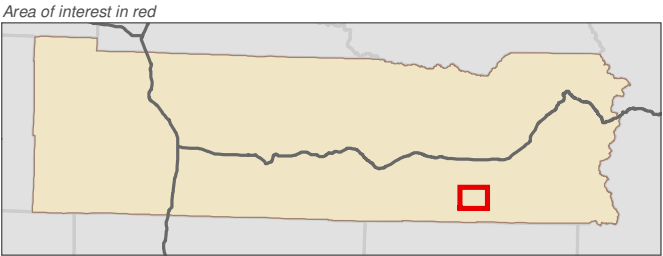
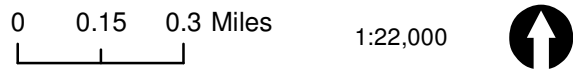


Lewis County, Washington
Shoreline Master Program

Map 28 - Channel Migration Zone
Figure: Cispus CMZ

Date: 6/3/2014

- Cispus HMZ (2005)
- SMA Jurisdiction
- SMA Rivers & Streams
- SMA Lakes
- Highways



Data: Lewis County, Pierce County, Washington State Department of Ecology,
Herrera Environmental Consultants, GeoEngineers, NRCS NAIP

Shoreline jurisdiction boundaries depicted on this map are approximate. They have not
been formally delineated or surveyed and are intended for planning purposes only.
Additional site-specific evaluation may be needed to confirm/verify information shown on
this map.

Lewis County Coalition



City of Morton City of Winlock



Lewis County, Washington
Shoreline Master Program

Map 28 - Channel Migration Zone
Figure: Cowlitz CMZ

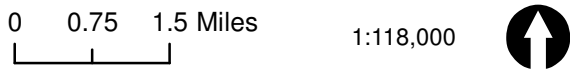
Date: 6/3/2014

Cowlitz CMZ (2008)

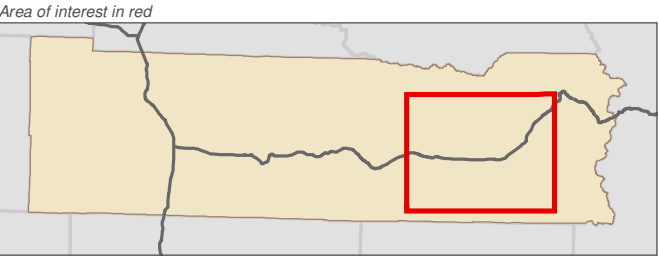
Severity

- Low
- Moderate
- Severe
- Cispus HMZ (2005)

- SMA Jurisdiction
- SMA Rivers & Streams
- SMA Lakes
- Highways



1:118,000



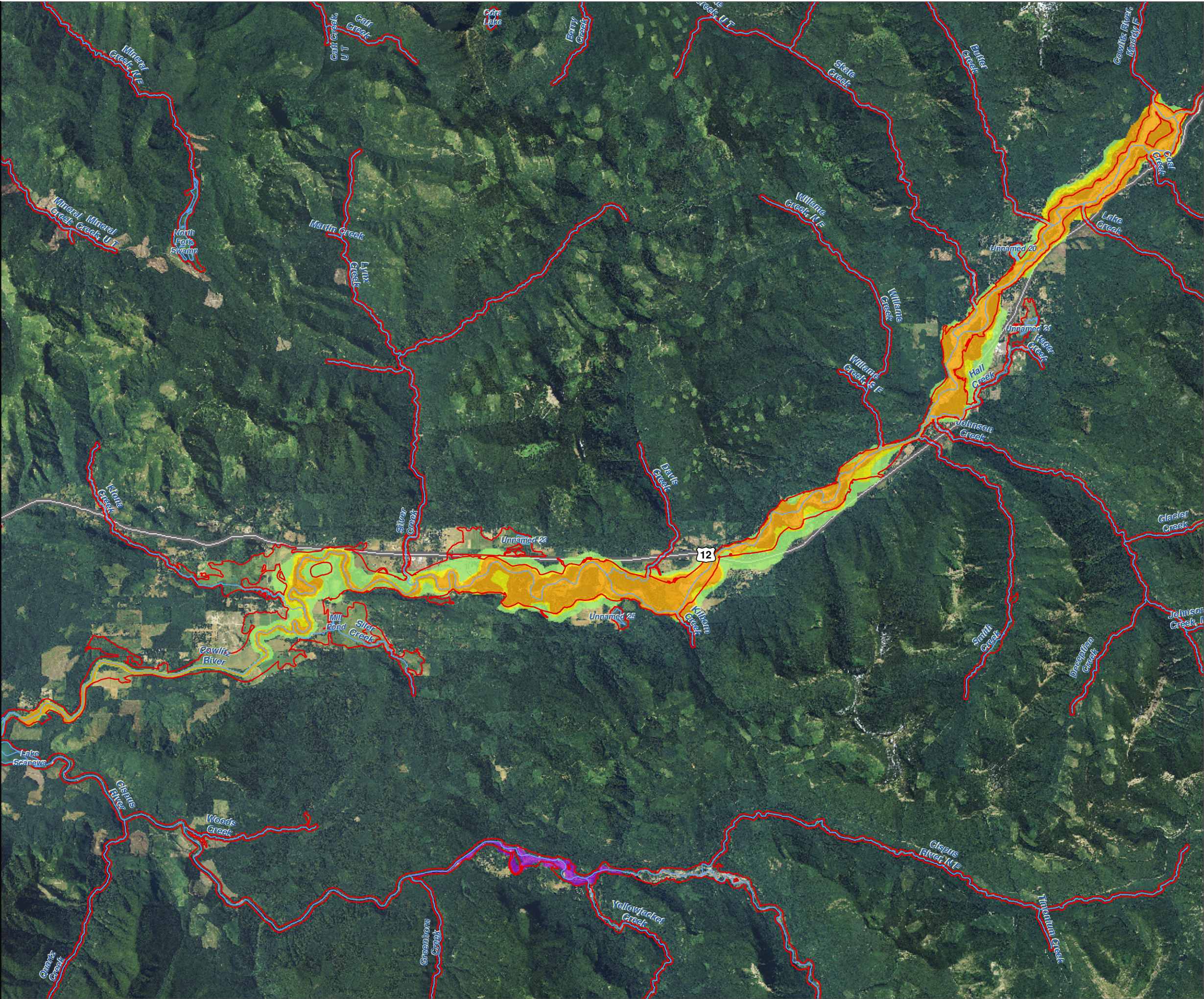
Data: Lewis County, Pierce County, Washington State Department of Ecology, Herrera Environmental Consultants, GeoEngineers, NRCS NAIP

Shoreline jurisdiction boundaries depicted on this map are approximate. They have not been formally delineated or surveyed and are intended for planning purposes only. Additional site-specific evaluation may be needed to confirm/verify information shown on this map.

Lewis County Coalition



City of Morton City of Winlock



Lewis County, Washington
Shoreline Master Program

Map 28 - Channel Migration Zone
Figure: Nisqually CMZ

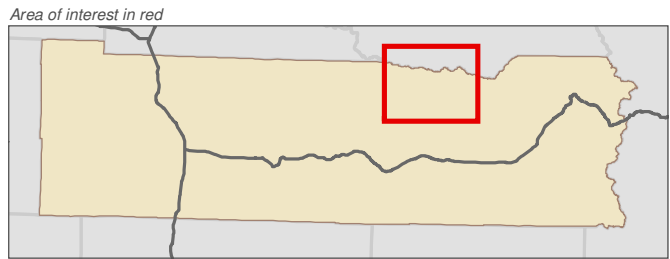
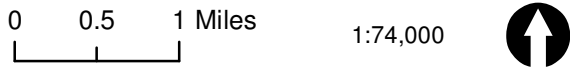
Date: 6/3/2014

Nisqually CMZ (2007)

Severity

- Moderate
- Severe and Moderate
- Severe

- SMA Jurisdiction
- SMA Rivers & Streams
- SMA Lakes
- Highways



Data: Lewis County, Pierce County, Washington State Department of Ecology, Herrera Environmental Consultants, GeoEngineers, NRCS NAIP

Shoreline jurisdiction boundaries depicted on this map are approximate. They have not been formally delineated or surveyed and are intended for planning purposes only. Additional site-specific evaluation may be needed to confirm/verify information shown on this map.

Lewis County Coalition



City of Morton City of Winlock

