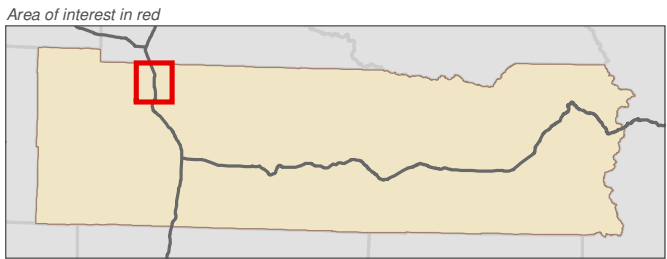
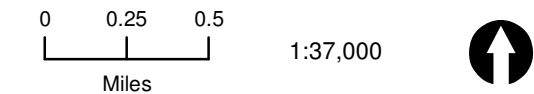


Lewis County, Washington
Shoreline Master Program

Map 1C - SMA Jurisdiction
Figure: Centralia

Date: 6/3/2014

- SMA Jurisdiction Origin Points
- SMA Jurisdiction
- Potentially Associated Wetlands
- SMA Shorelines of Statewide Significance
- SMA Shorelines of the State
- SMA Lakes
- Parcels
- Highways
- City
- UGA

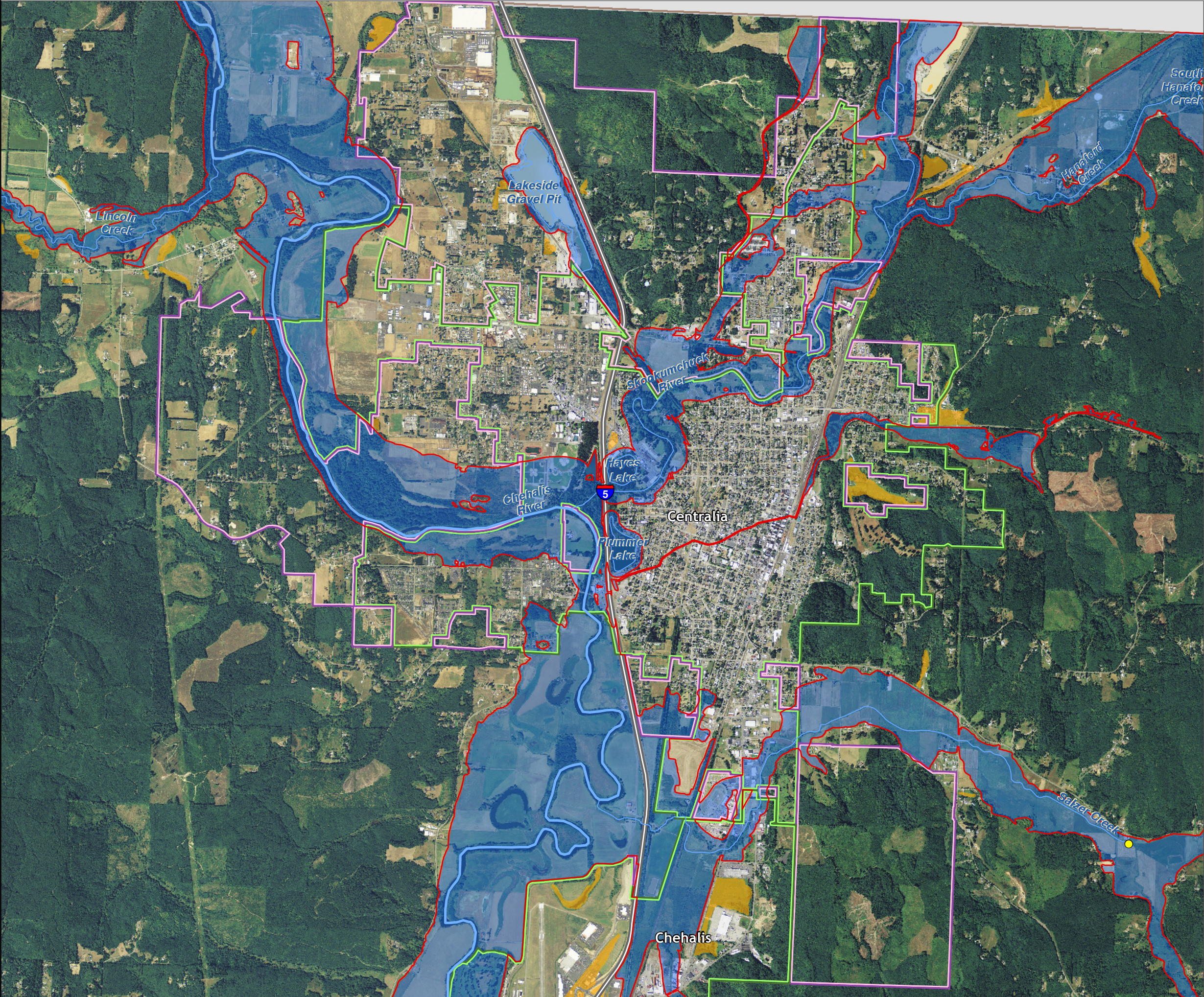


Data: Lewis County, USFWS NWI, FEMA, WA DNR, WSDOT, NRCS NAIP

Shoreline jurisdiction boundaries depicted on this map are approximate. They have not been formally delineated or surveyed and are intended for planning purposes only. Additional site-specific evaluation may be needed to confirm/verify information shown on this map.

Lewis County Coalition

City of Morton City of Winlock

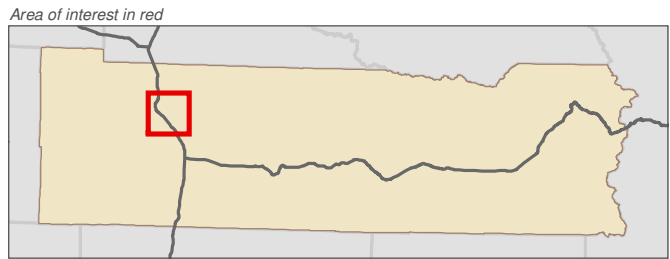
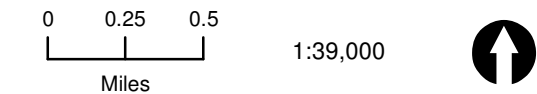


Lewis County, Washington
Shoreline Master Program

Map 1C - SMA Jurisdiction
Figure: Chehalis

Date: 6/3/2014

- SMA Jurisdiction Origin Points
- SMA Jurisdiction
- Potentially Associated Wetlands
- SMA Shorelines of Statewide Significance
- SMA Shorelines of the State
- SMA Lakes
- Parcels
- Highways
- City
- UGA



Data: Lewis County, USFWS NWI, FEMA, WA DNR, WSDOT, NRCS NAIP

Shoreline jurisdiction boundaries depicted on this map are approximate. They have not been formally delineated or surveyed and are intended for planning purposes only. Additional site-specific evaluation may be needed to confirm/verify information shown on this map.



Lewis County
Washington's First County
est. 1854



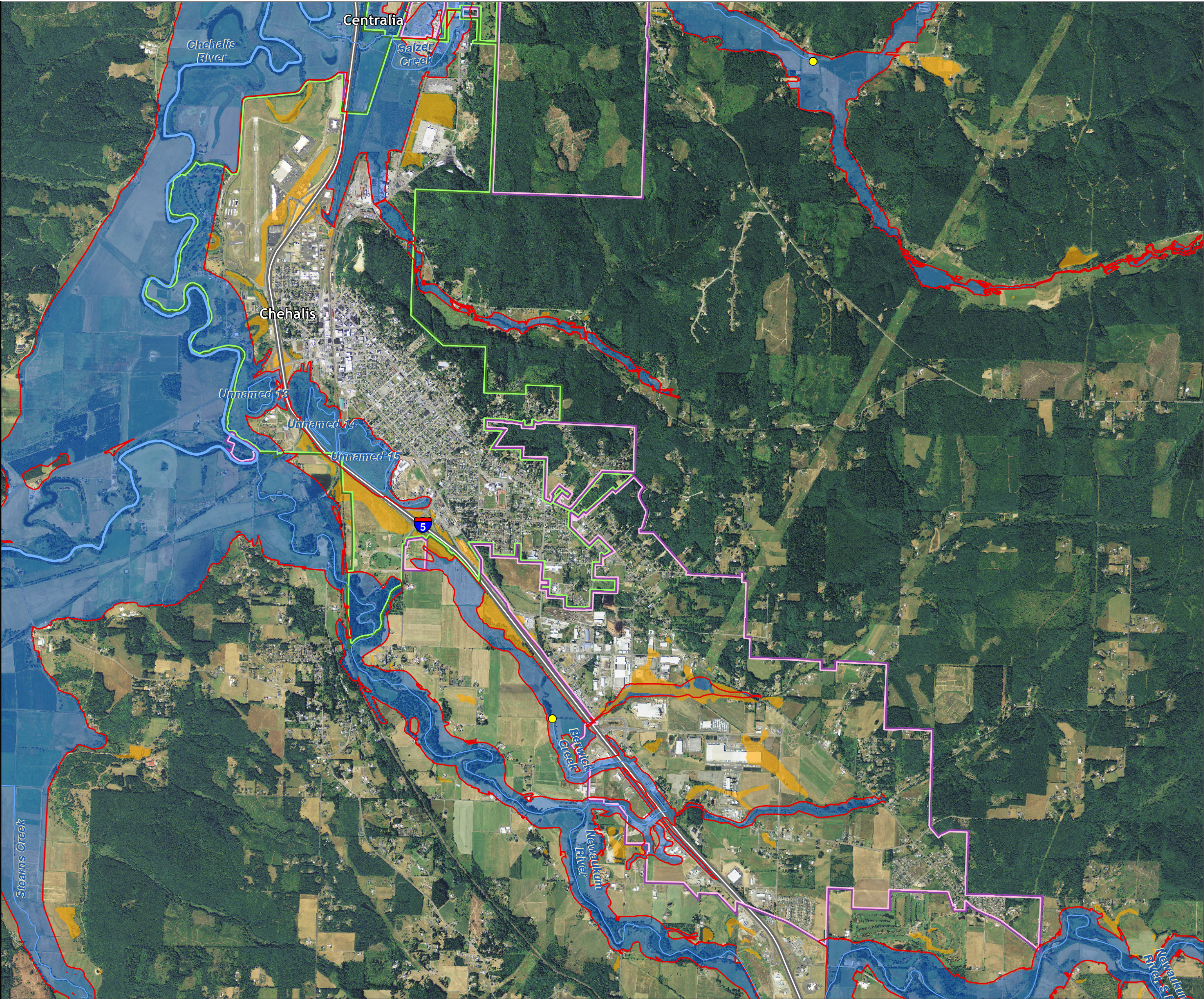
CENTRALIA



CHEHALIS, WASHINGTON
1883

City of Morton City of Winlock



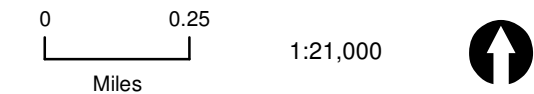


Lewis County, Washington
Shoreline Master Program

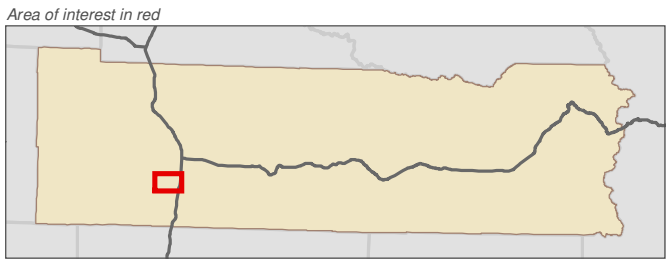
Map 1C - SMA Jurisdiction
Figure: Winlock

Date: 6/3/2014

- SMA Jurisdiction Origin Points
- SMA Jurisdiction
- Potentially Associated Wetlands
- SMA Shorelines of Statewide Significance
- SMA Shorelines of the State
- SMA Lakes
- Parcels
- Highways
- City
- UGA



1:21,000



Data: Lewis County, USFWS NWI, FEMA, WA DNR, WSDOT, NRCS NAIP

Shoreline jurisdiction boundaries depicted on this map are approximate. They have not been formally delineated or surveyed and are intended for planning purposes only. Additional site-specific evaluation may be needed to confirm/verify information shown on this map.

Lewis County Coalition



City of Morton City of Winlock



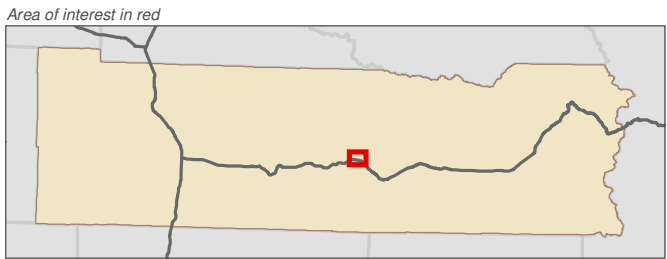
Lewis County, Washington
Shoreline Master Program

Map 1C - SMA Jurisdiction
Figure: Morton

Date: 6/3/2014

- SMA Jurisdiction Origin Points
- SMA Jurisdiction
- Potentially Associated Wetlands
- SMA Shorelines of Statewide Significance
- SMA Shorelines of the State
- SMA Lakes
- Parcels
- Highways
- City
- UGA

1:13,000



Data: Lewis County, USFWS NWI, FEMA, WA DNR, WSDOT, NRCS NAIP

Shoreline jurisdiction boundaries depicted on this map are approximate. They have not been formally delineated or surveyed and are intended for planning purposes only. Additional site-specific evaluation may be needed to confirm/verify information shown on this map.

Lewis County Coalition



City of Morton City of Winlock

