

Lewis County, Washington
Shoreline Master Program

Map 5C - Current Land Use
Figure: Centralia

Date: 6/3/2014

Current Land Use

- No Data

Single Family Residential

All Other Residential

Manufacturing/Industrial

Transportation/Utilities

Commercial

Government/Services

Cultural/Rec/Assembly

Park/Open Space/Trail

Agriculture

Forest

Natural Resources

Timber

Undeveloped Parcels
- SMA Rivers & Streams

SMA Lakes

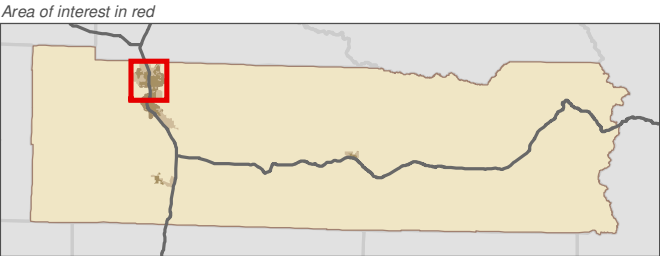
Highways

Railroads

City

UGA

0 0.275 0.55 Miles 1:37,000



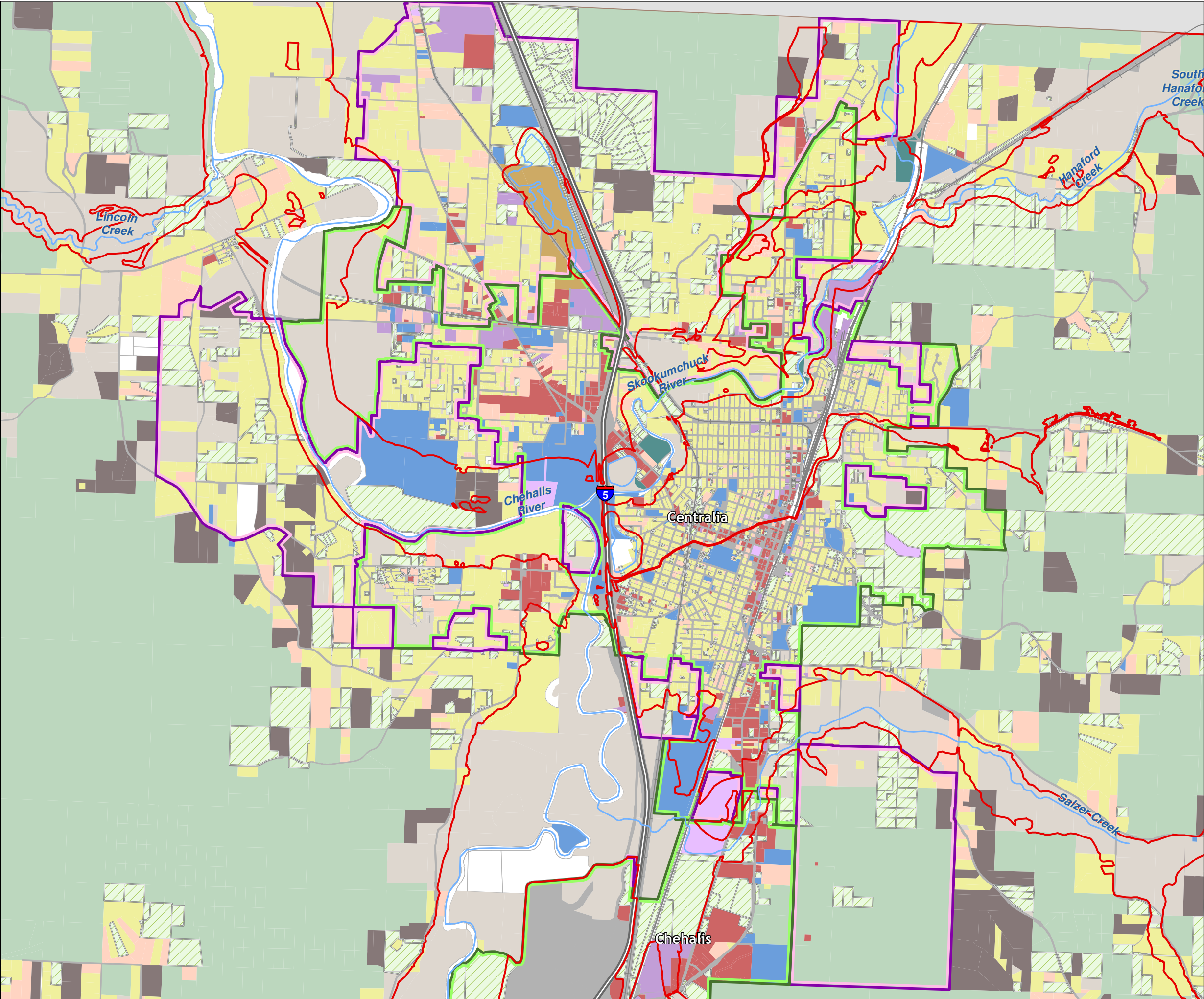
Data: Lewis County, USFWS NWI, FEMA, WA DNR, WSDOT, NRCS NAIP

Shoreline jurisdiction boundaries depicted on this map are approximate. They have not been formally delineated or surveyed and are intended for planning purposes only. Additional site-specific evaluation may be needed to confirm/verify information shown on this map.

Lewis County Coalition



City of Morton City of Winlock



Lewis County, Washington
Shoreline Master Program

Map 5C - Current Land Use
Figure: Chehalis

Date: 6/3/2014

Current Land Use

- No Data

Single Family Residential

All Other Residential

Manufacturing/Industrial

Transportation/Utilities

Commercial

Government/Services

Cultural/Rec/Assembly

Park/Open Space/Trail

Agriculture

Forest

Natural Resources

Timber

Undeveloped Parcels
- SMA Rivers & Streams

SMA Jurisdiction

SMA Lakes

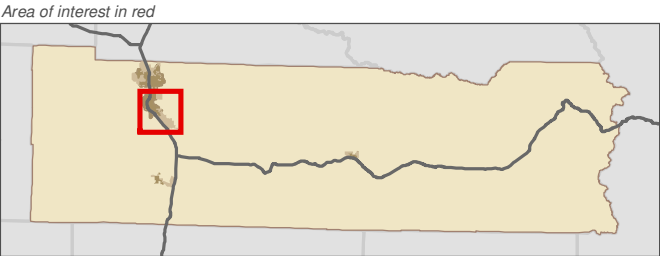
Highways

Railroads

City

UGA

0 0.3 0.6 Miles 1:39,000



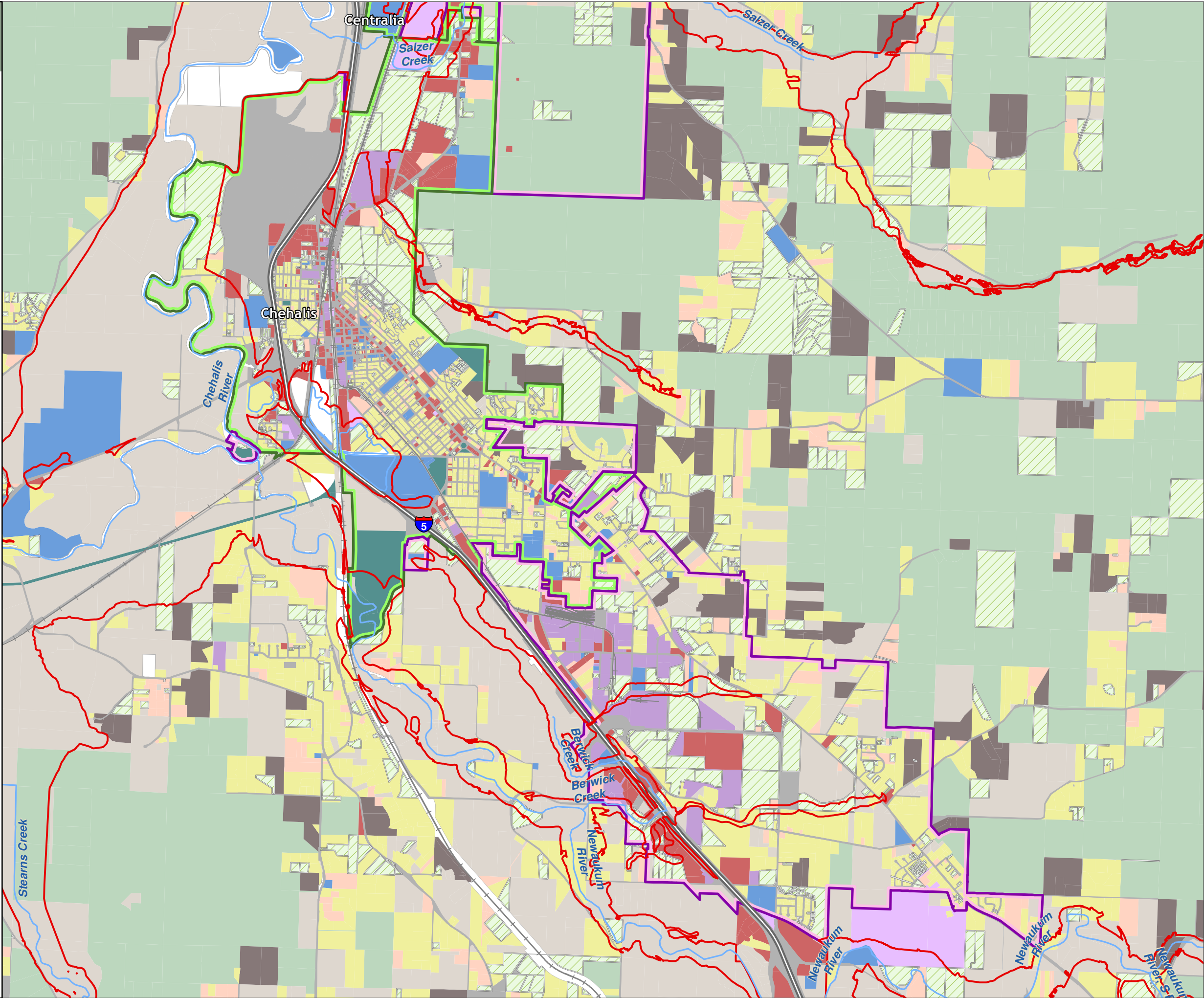
Data: Lewis County, USFWS NWI, FEMA, WA DNR, WSDOT, NRCS NAIP

Shoreline jurisdiction boundaries depicted on this map are approximate. They have not been formally delineated or surveyed and are intended for planning purposes only. Additional site-specific evaluation may be needed to confirm/verify information shown on this map.

Lewis County Coalition



City of Morton City of Winlock



Lewis County, Washington
Shoreline Master Program

Map 5C - Current Land Use

Figure: Winlock

Date: 6/3/2014

Current Land Use

- No Data

Single Family Residential

All Other Residential

Manufacturing/Industrial

Transportation/Utilities

Commercial

Government/Services

Cultural/Rec/Assembly

Park/Open Space/Trail

Agriculture

Forest

Natural Resources

Timber

Undeveloped Parcels
- SMA Rivers & Streams

SMA Lakes

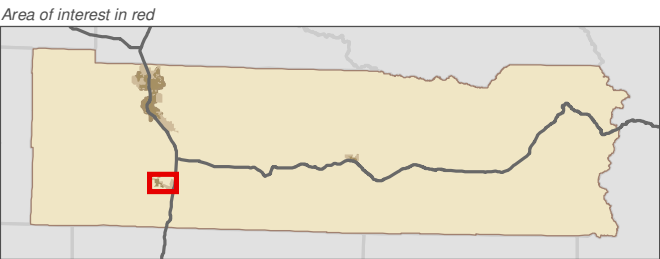
Highways

Railroads

City

UGA

0 0.15 0.3 Miles 1:21,000



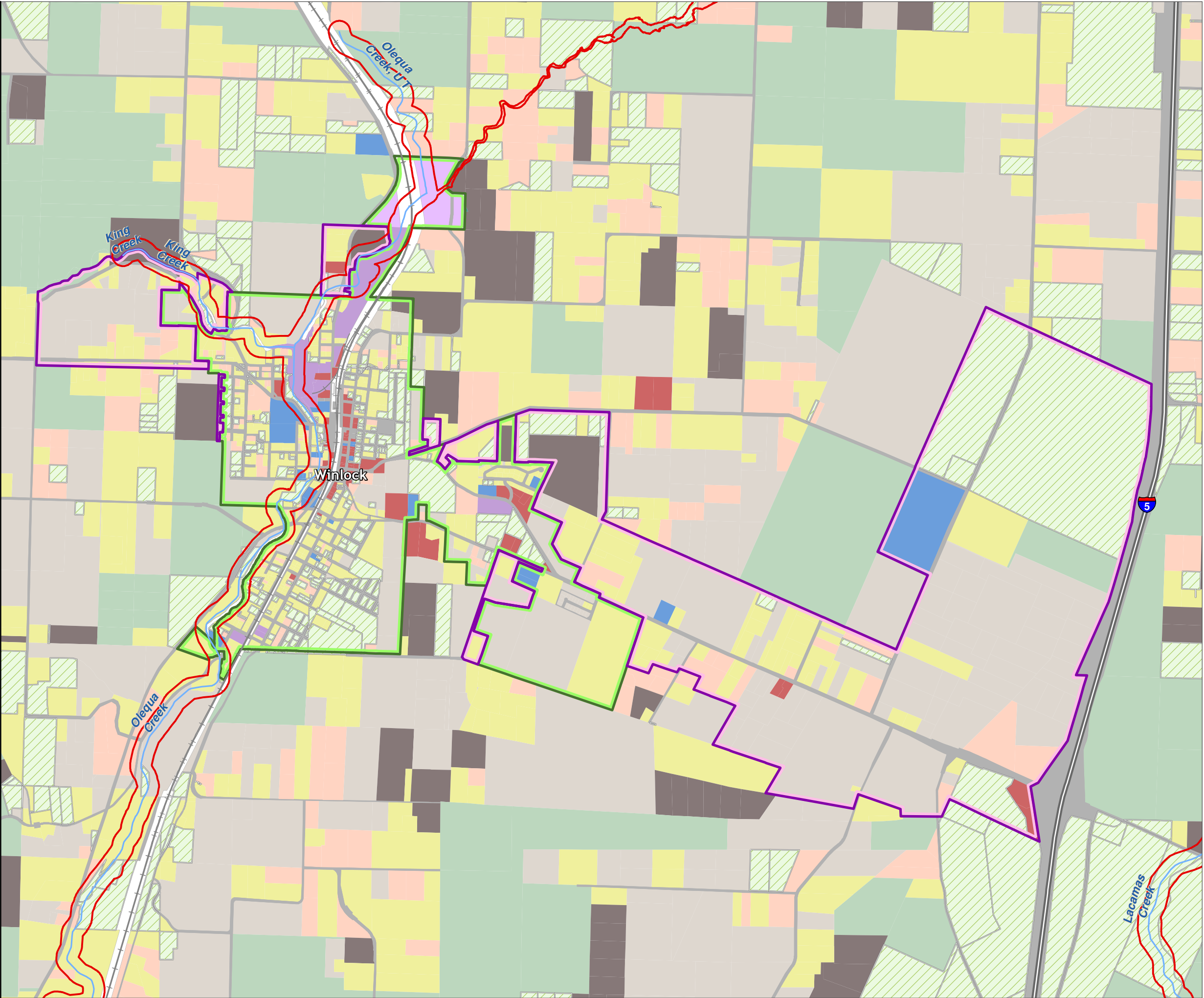
Data: Lewis County, USFWS NWI, FEMA, WA DNR, WSDOT, NRCS NAIP

Shoreline jurisdiction boundaries depicted on this map are approximate. They have not been formally delineated or surveyed and are intended for planning purposes only. Additional site-specific evaluation may be needed to confirm/verify information shown on this map.

Lewis County Coalition



City of Morton City of Winlock



Lewis County, Washington
Shoreline Master Program

Map 5C - Current Land Use

Figure: Morton

Date: 6/3/2014

Current Land Use

- No Data

Single Family Residential

All Other Residential

Manufacturing/Industrial

Transportation/Utilities

Commercial

Government/Services

Cultural/Rec/Assembly

Park/Open Space/Trail

Agriculture

Forest

Natural Resources

Timber

Undeveloped Parcels

SMA Rivers & Streams

SMA Jurisdiction

SMA Lakes

Highways

Railroads

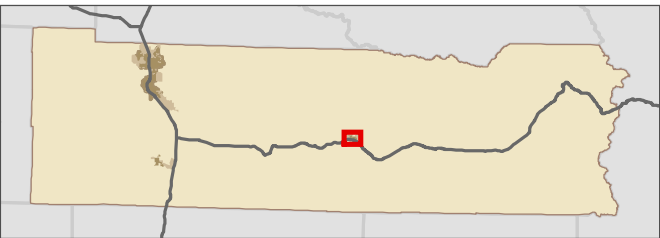
City

UGA

0 0.1 0.2 Miles 1:13,000



Area of interest in red



Data: Lewis County, USFWS NWI, FEMA, WA DNR, WSDOT, NRCS NAIP

Shoreline jurisdiction boundaries depicted on this map are approximate. They have not been formally delineated or surveyed and are intended for planning purposes only. Additional site-specific evaluation may be needed to confirm/verify information shown on this map.

Lewis County Coalition



City of Morton City of Winlock

