

Lewis County, Washington
Shoreline Master Program

Map 8C -
Floodplains, Floodway, and Wetlands

Figure: Centralia

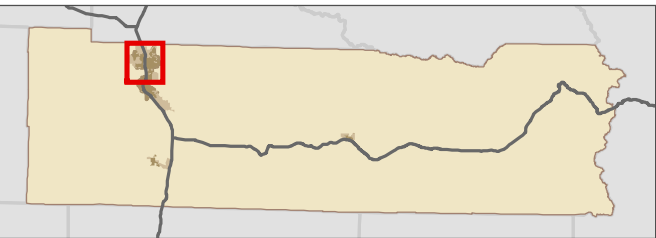
Date: 6/3/2014

- NWI Wetlands
- SMP Flood Course
- FEMA 100 Year Floodplain
- SMA Rivers & Streams
- SMA Lakes
- Parcels
- Highways
- SMA Jurisdiction
- City
- UGA

0 0.25 0.5 Miles 1:38,000



Area of interest in red



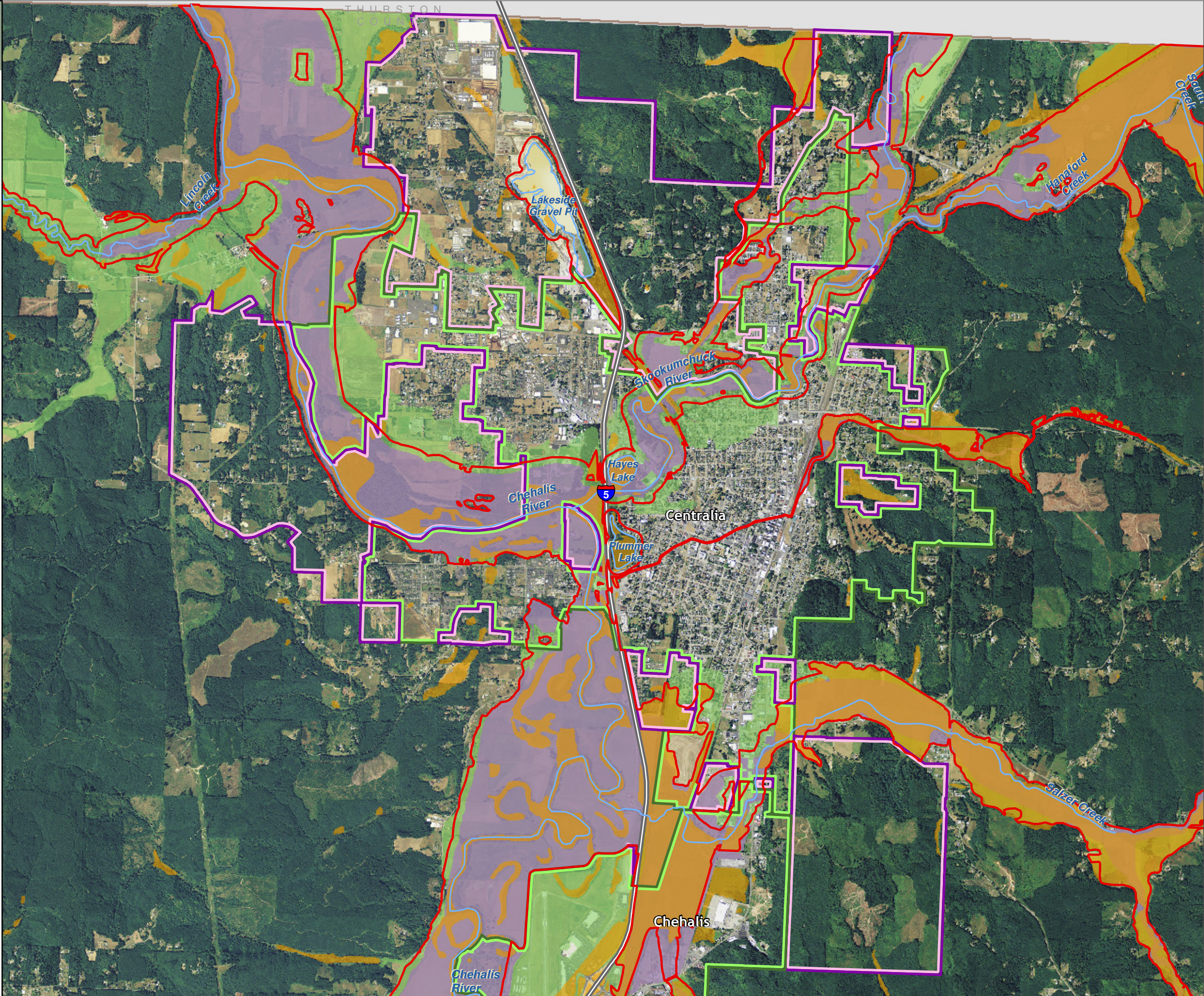
Data: Lewis County, USFWS NWI, FEMA, WA DNR, WSDOT, NRCS NAIP

Shoreline jurisdiction boundaries depicted on this map are approximate. They have not been formally delineated or surveyed and are intended for planning purposes only. Additional site-specific evaluation may be needed to confirm/verify information shown on this map.

Lewis County Coalition



City of Morton City of Winlock



Lewis County, Washington
Shoreline Master Program

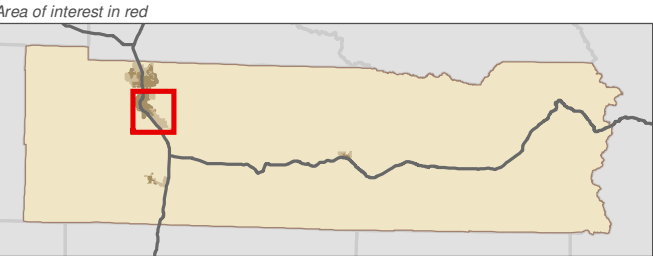
Map 8C -
Floodplains, Floodway, and Wetlands

Figure: Chehalis

Date: 6/3/2014

- NWI Wetlands
- SMP Flood Course
- FEMA 100 Year Floodplain
- SMA Rivers & Streams
- SMA Lakes
- Parcels
- Highways
- SMA Jurisdiction
- City
- UGA

0 0.25 0.5 Miles 1:39,000



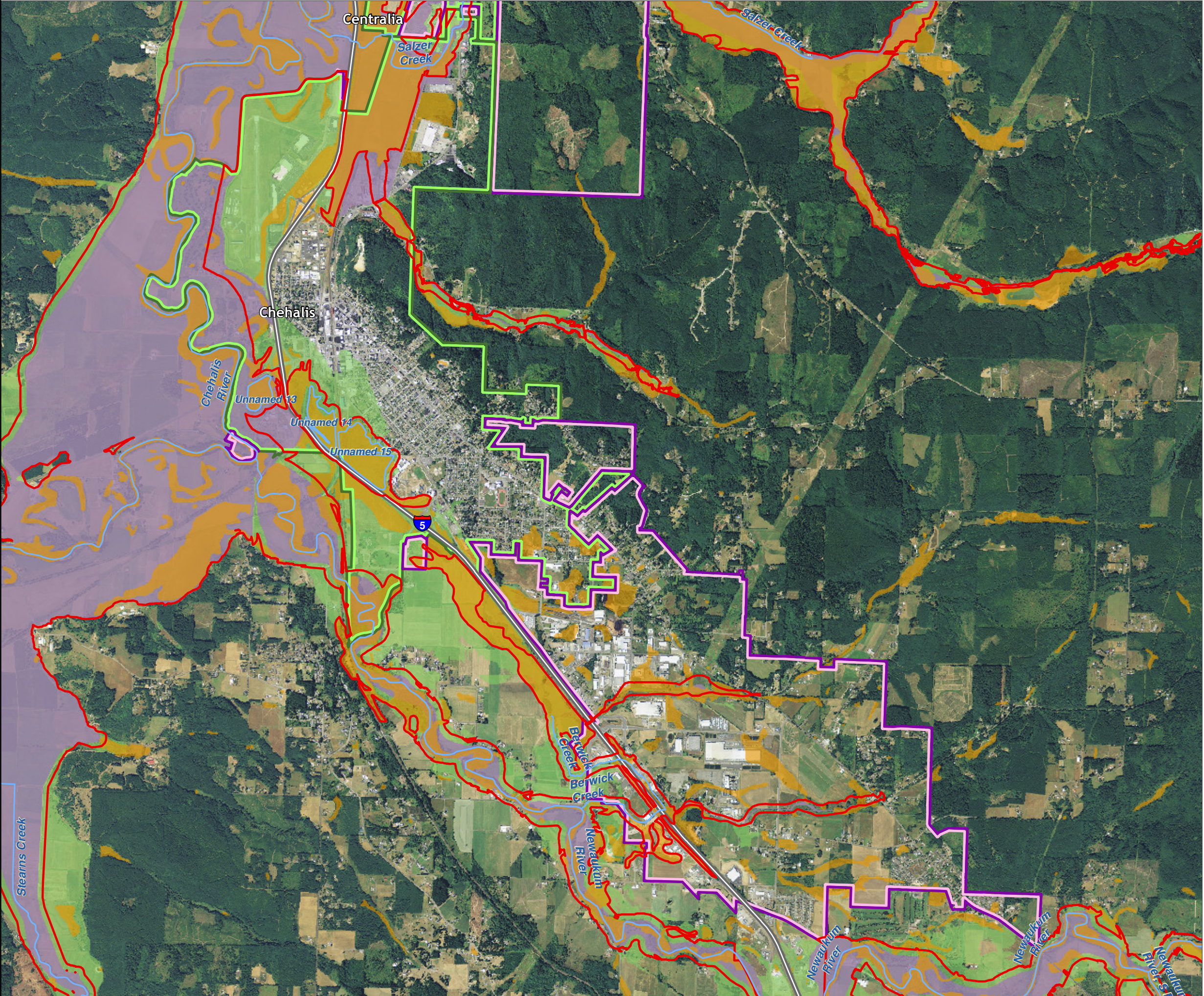
Data: Lewis County, USFWS NWI, FEMA, WA DNR, WSDOT, NRCS NAIP

Shoreline jurisdiction boundaries depicted on this map are approximate. They have not been formally delineated or surveyed and are intended for planning purposes only. Additional site-specific evaluation may be needed to confirm/verify information shown on this map.

Lewis County Coalition



City of Morton City of Winlock



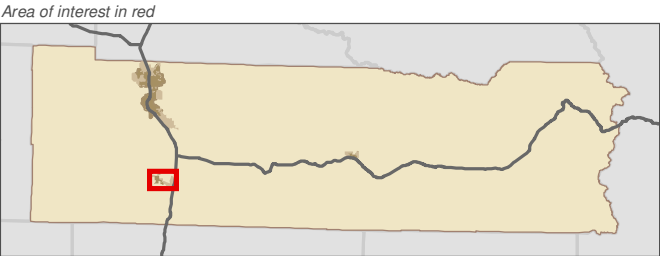
Lewis County, Washington
Shoreline Master Program

Map 8C -
Floodplains, Floodway, and Wetlands
Figure: Winlock

Date: 6/3/2014

- NWI Wetlands
- SMP Flood Course
- FEMA 100 Year Floodplain
- SMA Rivers & Streams
- SMA Lakes
- Parcels
- Highways
- SMA Jurisdiction
- City
- UGA

0 0.125 0.25 Miles 1:21,000



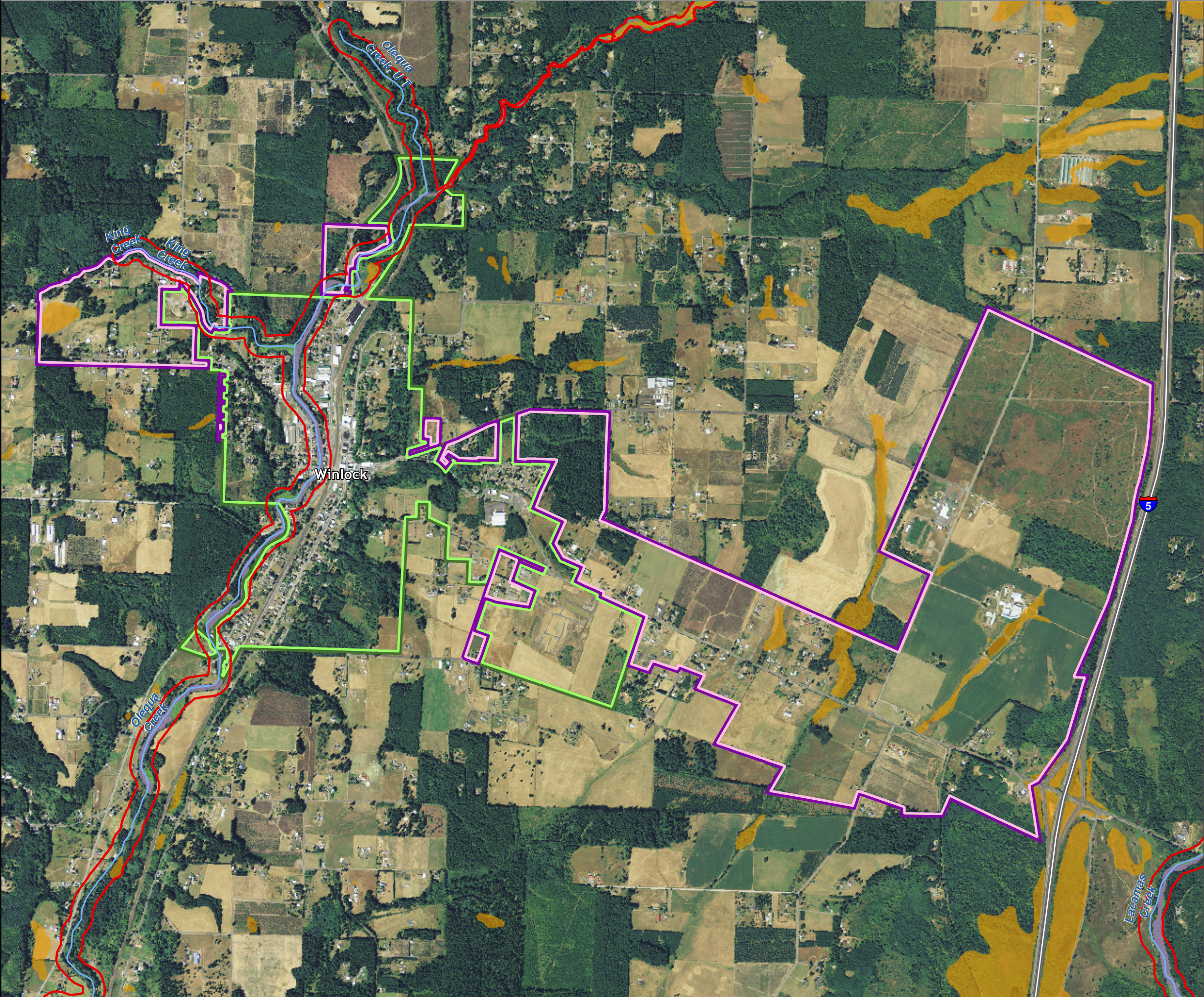
Data: Lewis County, USFWS NWI, FEMA, WA DNR, WSDOT, NRCS NAIP

Shoreline jurisdiction boundaries depicted on this map are approximate. They have not been formally delineated or surveyed and are intended for planning purposes only. Additional site-specific evaluation may be needed to confirm/verify information shown on this map.

Lewis County Coalition



City of Morton City of Winlock



Lewis County, Washington
Shoreline Master Program

**Map 8C -
Floodplains, Floodway, and Wetlands**
Figure: Morton

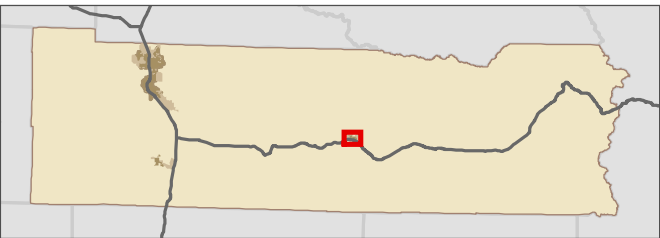
Date: 6/3/2014

- NWI Wetlands
- SMP Flood Course
- FEMA 100 Year Floodplain
- SMA Rivers & Streams
- SMA Lakes
- Parcels
- Highways
- SMA Jurisdiction
- City
- UGA

0 0.075 0.15 Miles
1:13,000



Area of interest in red



Data: Lewis County, USFWS NWI, FEMA,
WA DNR, WSDOT, NRCS NAIP

Shoreline jurisdiction boundaries depicted on this map are approximate. They have not been formally delineated or surveyed and are intended for planning purposes only. Additional site-specific evaluation may be needed to confirm/verify information shown on this map.

Lewis County Coalition



City of Morton City of Winlock

