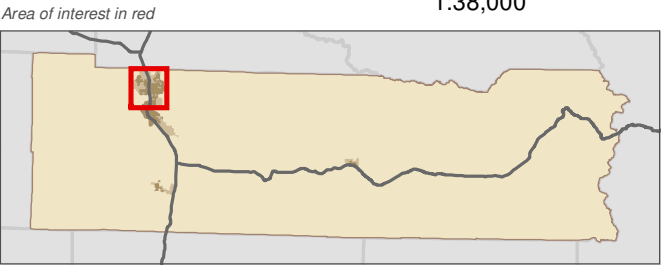
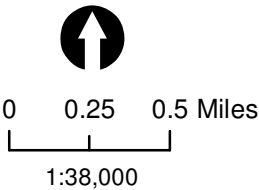


Lewis County, Washington
Shoreline Master Program

Map 10C - Surficial Geology
Figure: Centralia

Date: 6/3/2014

- Surficial Geology
- Alluvium
 - Alpine glacial outwash, pre-Fraser
 - Continental glacial outwash, Fraser-age
 - Continental glacial outwash, gravel, Fraser-age
 - Marine sedimentary rocks
 - Mass-wasting deposits, mostly landslides
 - Nearshore sedimentary rocks
 - Terraced deposits
 - SMA Rivers & Streams
 - SMA Lakes
 - Parcels
 - Highways
 - SMA Jurisdiction
 - City
 - UGA

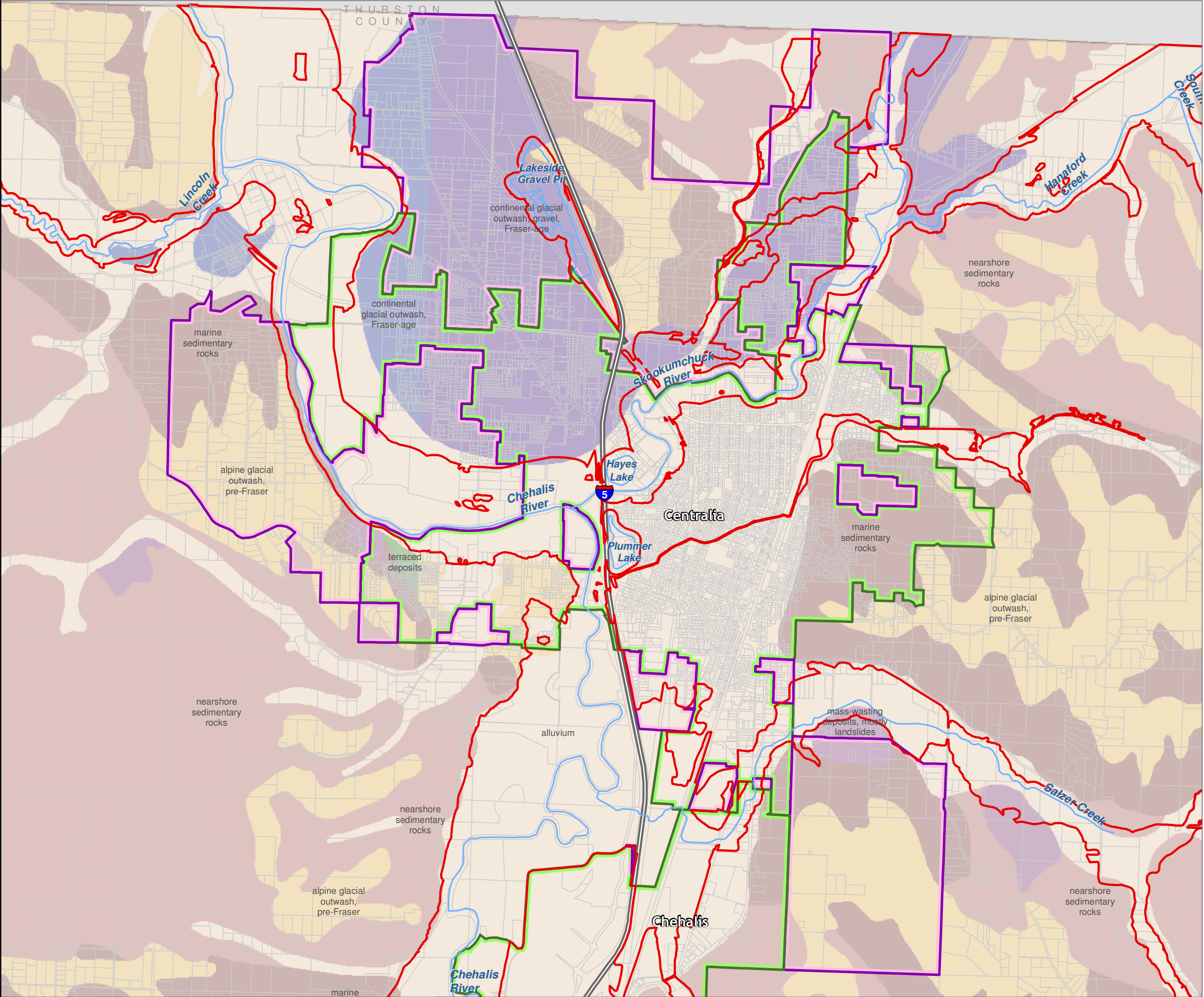


Data: Lewis County, USFWS NWI, FEMA, WA DNR, WSDOT, NRCS NAIP
Shoreline jurisdiction boundaries depicted on this map are approximate. They have not been formally delineated or surveyed and are intended for planning purposes only. Additional site-specific evaluation may be needed to confirm/verify information shown on this map.

Lewis County Coalition



City of Morton City of Winlock



Lewis County, Washington
Shoreline Master Program

Map 10C - Surficial Geology
Figure: Chehalis

Date: 6/3/2014

Surficial Geology

- Alluvium
- Alpine glacial outwash, pre-Fraser
- Basalt flows (Grande Ronde Basalt)
- Continental sedimentary deposits or rocks
- Marine sedimentary rocks
- Mass-wasting deposits, mostly landslides
- Nearshore sedimentary rocks

SMA Rivers & Streams

SMA Lakes

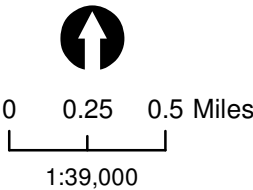
Parcels

Highways

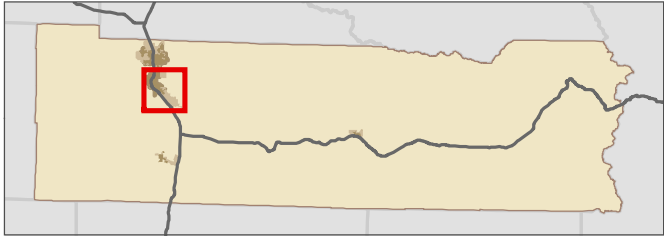
SMA Jurisdiction

City

UGA



Area of interest in red

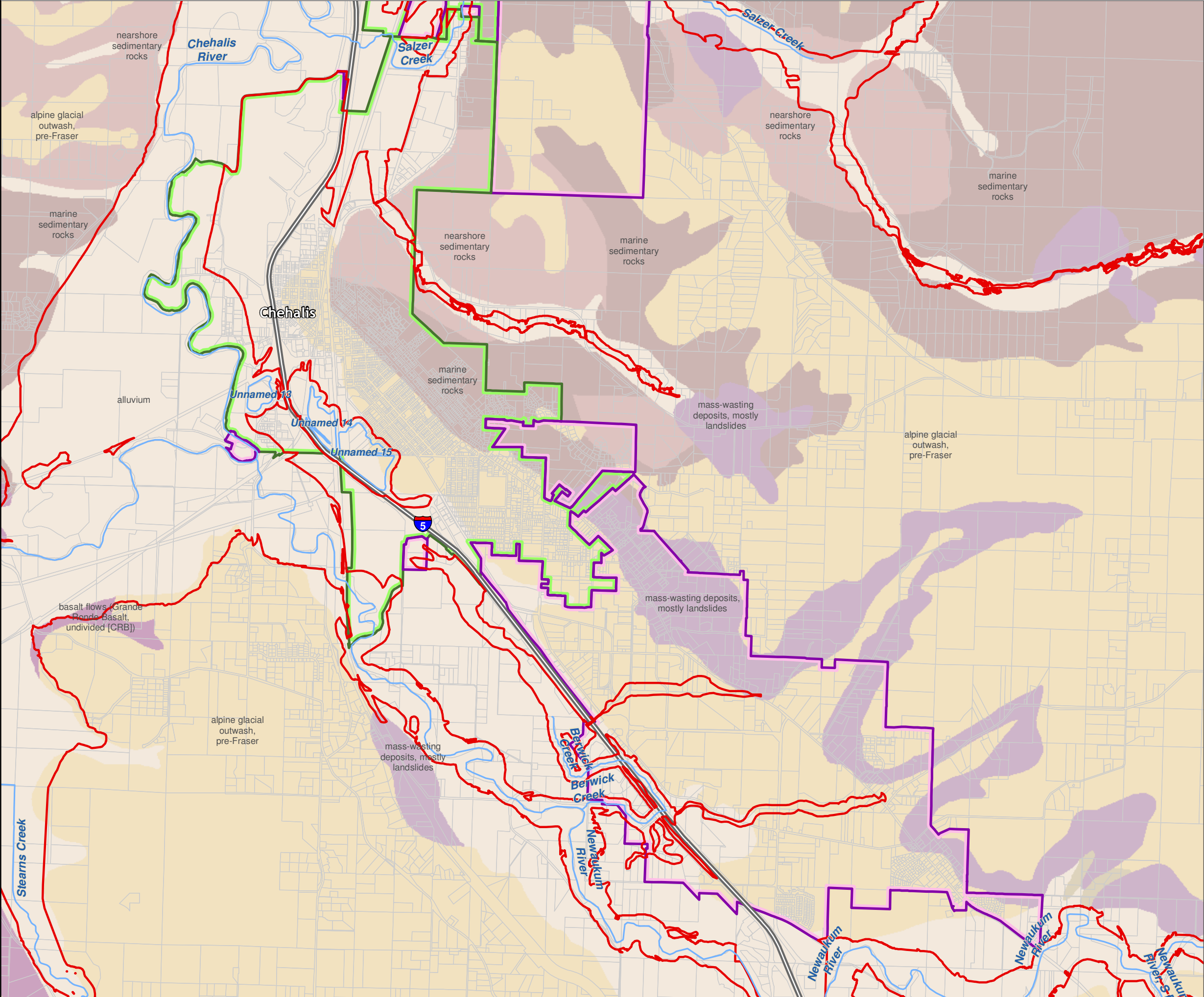


Data: Lewis County, USFWS NWI, FEMA, WA DNR, WSDOT, NRCS NAIP
Shoreline jurisdiction boundaries depicted on this map are approximate. They have not been formally delineated or surveyed and are intended for planning purposes only. Additional site-specific evaluation may be needed to confirm/verify information shown on this map.

Lewis County Coalition



City of Morton City of Winlock



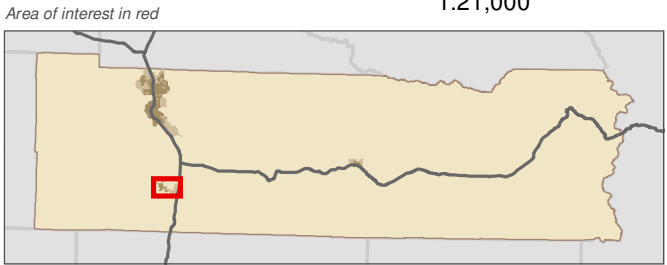
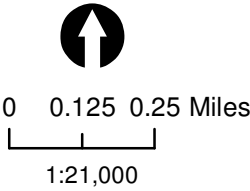
Lewis County, Washington
Shoreline Master Program

Map 10C - Surficial Geology
Figure: Winlock

Date: 6/3/2014

Surficial Geology

- Alluvium
- Alpine glacial drift, pre-Fraser
- Alpine glacial outwash, pre-Fraser
- Basalt flows (Grande Ronde Basalt)
- Marine sedimentary rocks
- Mass-wasting deposits, mostly landslides
- Nearshore sedimentary rocks
- SMA Rivers & Streams
- SMA Lakes
- Parcels
- Highways
- SMA Jurisdiction
- City
- UGA

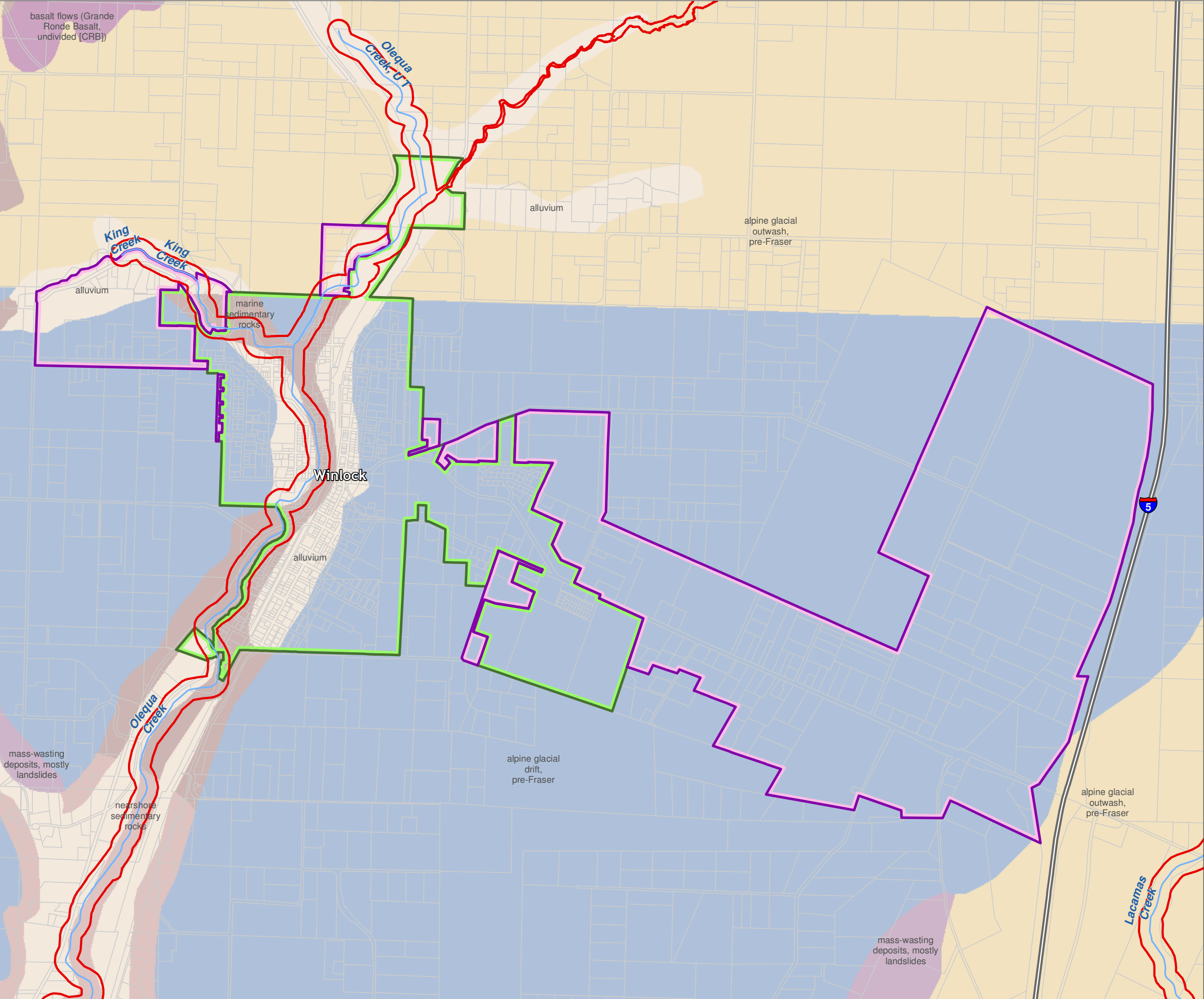


Data: Lewis County, USFWS NWI, FEMA, WA DNR, WSDOT, NRCS NAIP
Shoreline jurisdiction boundaries depicted on this map are approximate. They have not been formally delineated or surveyed and are intended for planning purposes only. Additional site-specific evaluation may be needed to confirm/verify information shown on this map.

Lewis County Coalition



City of Morton City of Winlock



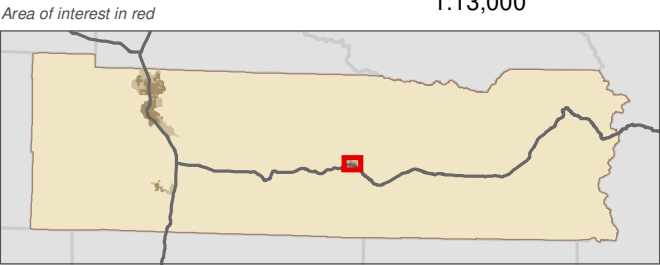
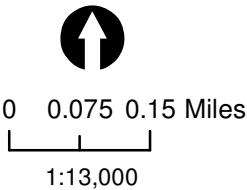
Lewis County, Washington
Shoreline Master Program

Map 10C - Surficial Geology
Figure: Morton

Date: 6/3/2014

Surficial Geology

- Alluvium
- Alpine glacial till, pre-Fraser
- Andesite flows
- Basaltic andesite flows
- Continental sedimentary deposits or rocks
- Diorite
- Mass-wasting deposits, mostly landslides
- SMA Rivers & Streams
- SMA Lakes
- Parcels
- Highways
- SMA Jurisdiction
- City
- UGA



Data: Lewis County, USFWS NWI, FEMA, WA DNR, WSDOT, NRCS NAIP
Shoreline jurisdiction boundaries depicted on this map are approximate. They have not been formally delineated or surveyed and are intended for planning purposes only. Additional site-specific evaluation may be needed to confirm/verify information shown on this map.

Lewis County Coalition



City of Morton City of Winlock

