

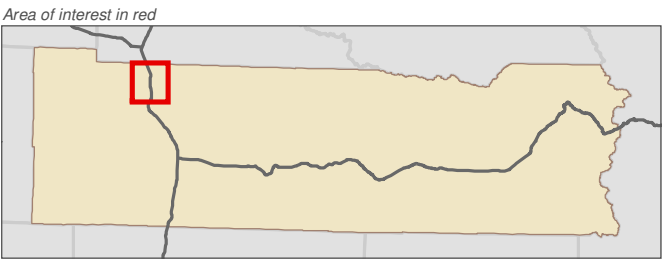
Lewis County, Washington
Shoreline Master Program

Map 24C - Toxic Cleanup Sites
Figure Centralia

Date: 6/3/2014

- State Cleanup Site
- Active Underground Storage Tank
- SMA Rivers & Streams
- SMA Lakes
- Highways
- SMA Jurisdiction
- City
- UGA

0 0.25 0.5 Miles 1:37,000



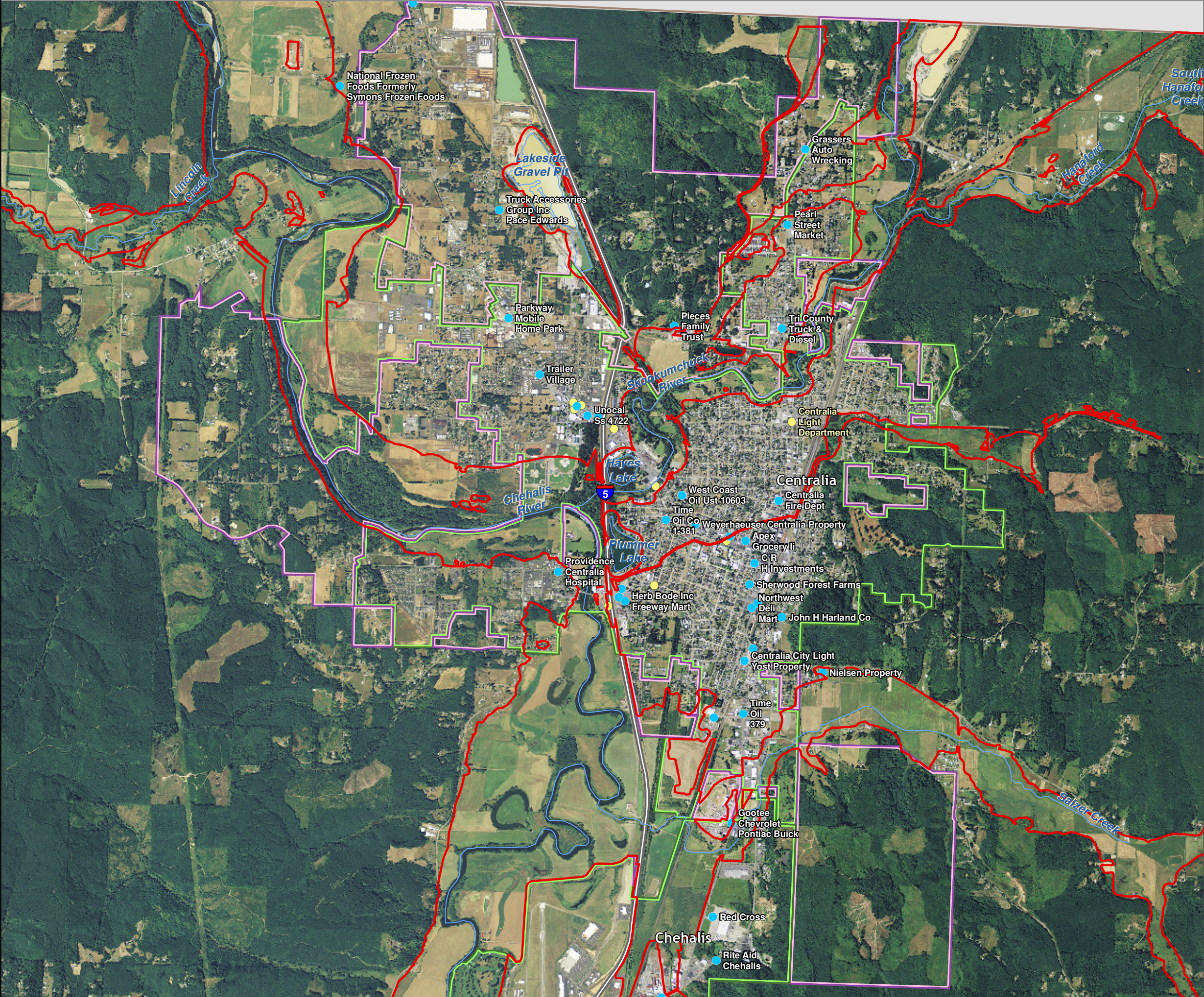
Data: Lewis County, USFWS NWI, FEMA, WA DNR, WSDOT, NRCS NAIP

Shoreline jurisdiction boundaries depicted on this map are approximate. They have not been formally delineated or surveyed and are intended for planning purposes only. Additional site-specific evaluation may be needed to confirm/verify information shown on this map.

Lewis County Coalition



City of Morton City of Winlock

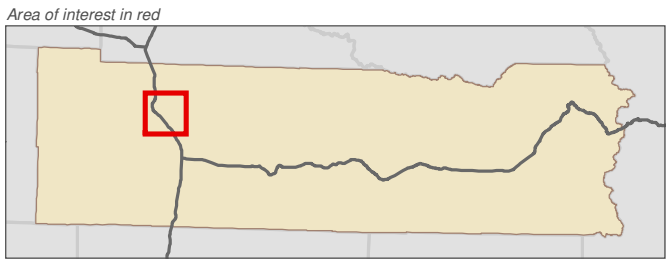


Lewis County, Washington
Shoreline Master Program

Map 24C - Toxic Cleanup Sites
Figure Chehalis

Date: 6/3/2014

- State Cleanup Site
- Active Underground Storage Tank
- SMA Rivers & Streams
- SMA Lakes
- Highways
- SMA Jurisdiction
- City
- UGA



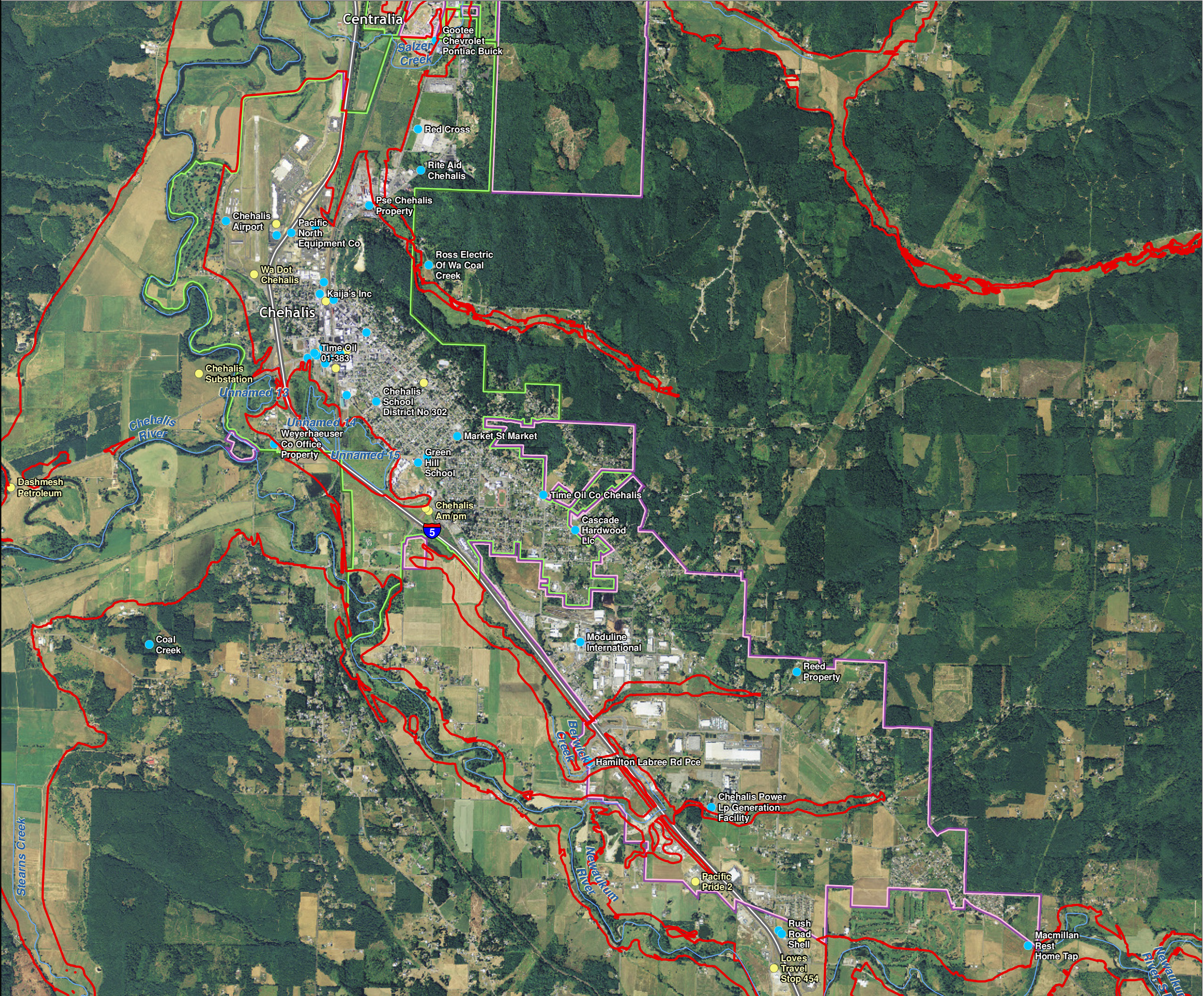
Data: Lewis County, USFWS NWI, FEMA, WA DNR, WSDOT, NRCS NAIP

Shoreline jurisdiction boundaries depicted on this map are approximate. They have not been formally delineated or surveyed and are intended for planning purposes only. Additional site-specific evaluation may be needed to confirm/verify information shown on this map.

Lewis County Coalition



City of Morton City of Winlock



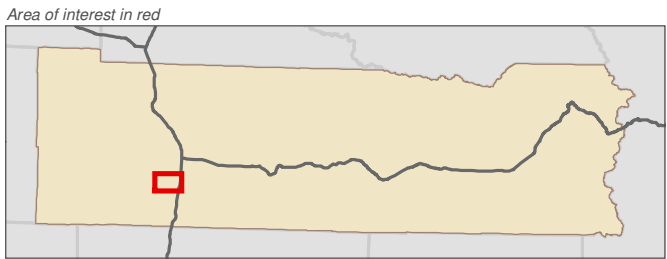
Lewis County, Washington
Shoreline Master Program

Map 24C - Toxic Cleanup Sites
Figure Winlock

Date: 6/3/2014

- State Cleanup Site
- Active Underground Storage Tank
- SMA Rivers & Streams
- SMA Lakes
- Highways
- SMA Jurisdiction
- City
- UGA

0 0.125 0.25 Miles
1:21,000



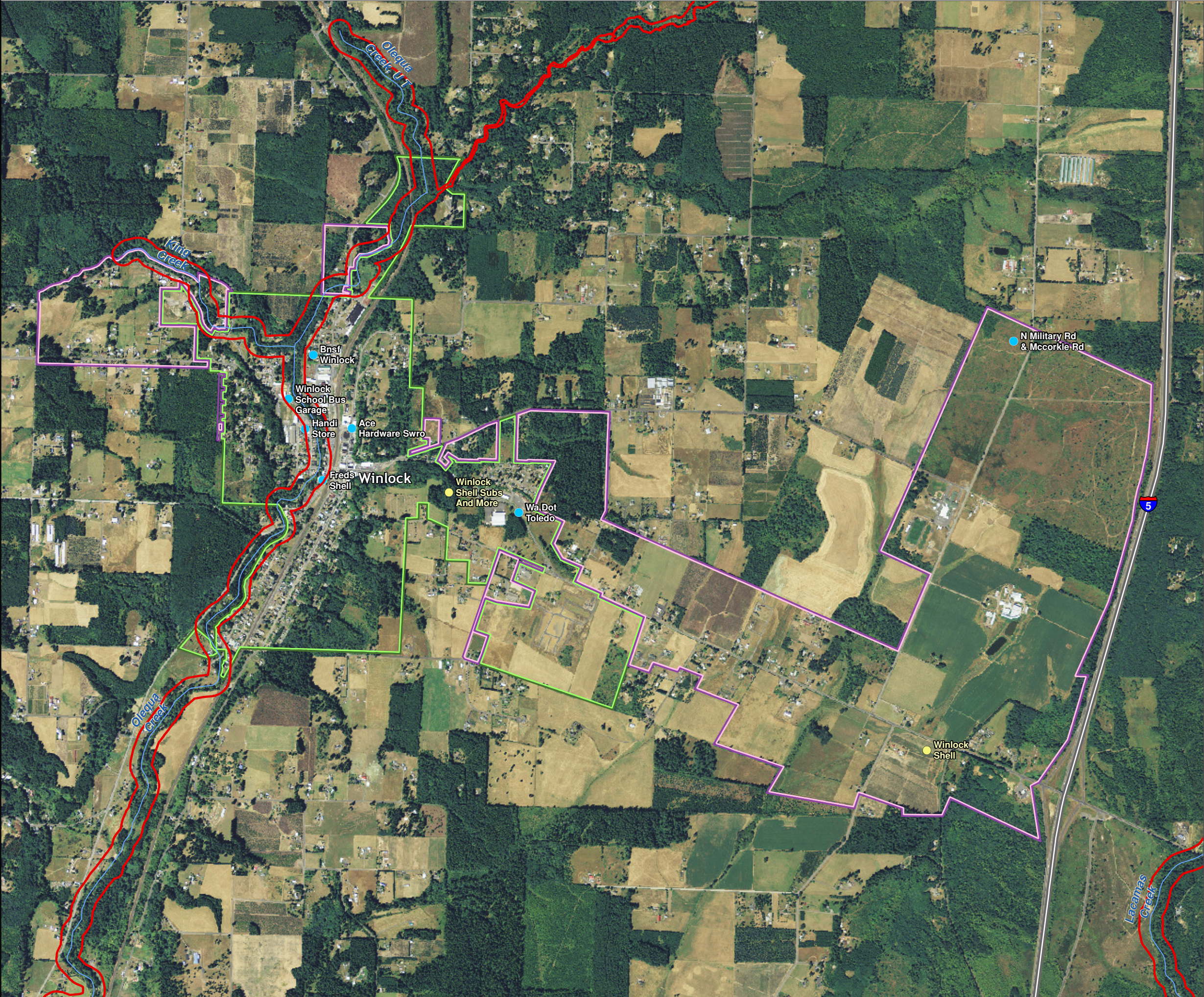
Data: Lewis County, USFWS NWI, FEMA, WA DNR, WSDOT, NRCS NAIP

Shoreline jurisdiction boundaries depicted on this map are approximate. They have not been formally delineated or surveyed and are intended for planning purposes only. Additional site-specific evaluation may be needed to confirm/verify information shown on this map.

Lewis County Coalition



City of Morton City of Winlock



Map 24C - Toxic Cleanup Sites
Figure Morton

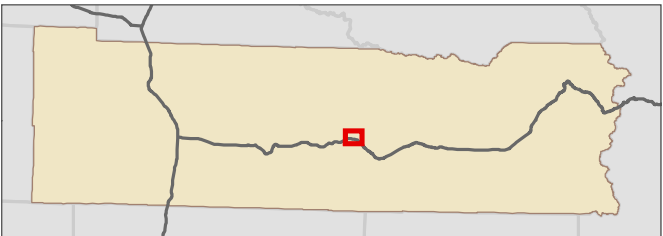
Date: 6/3/2014

- State Cleanup Site
- Active Underground Storage Tank
- SMA Rivers & Streams
- SMA Lakes
- Highways
- SMA Jurisdiction
- City
- UGA

0 0.075 0.15 Miles
1:13,000



Area of interest in red



Data: Lewis County, USFWS NWI, FEMA, WA DNR, WSDOT, NRCS NAIP

Shoreline jurisdiction boundaries depicted on this map are approximate. They have not been formally delineated or surveyed and are intended for planning purposes only. Additional site-specific evaluation may be needed to confirm/verify information shown on this map.

Lewis County Coalition



City of Morton City of Winlock

