

Lewis County, Washington
Shoreline Master Program

Map 26C -
Shoreline Environment Designations

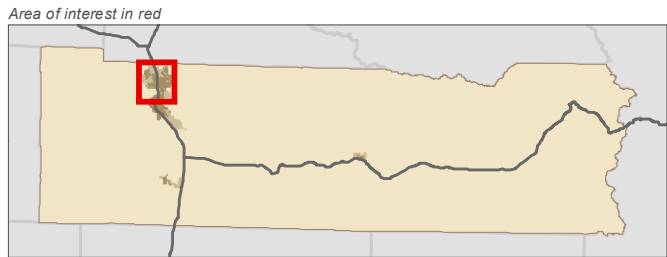
Figure: Centralia

Date: 7/9/2015

Shoreline Environment Designation

- Aquatic
- Urban Conservancy
- Shoreline Residential
- High Intensity
- SMA Rivers & Streams
- SMA Lakes
- Highways
- City
- UGA

0 0.25 0.5 Miles 1:37,000



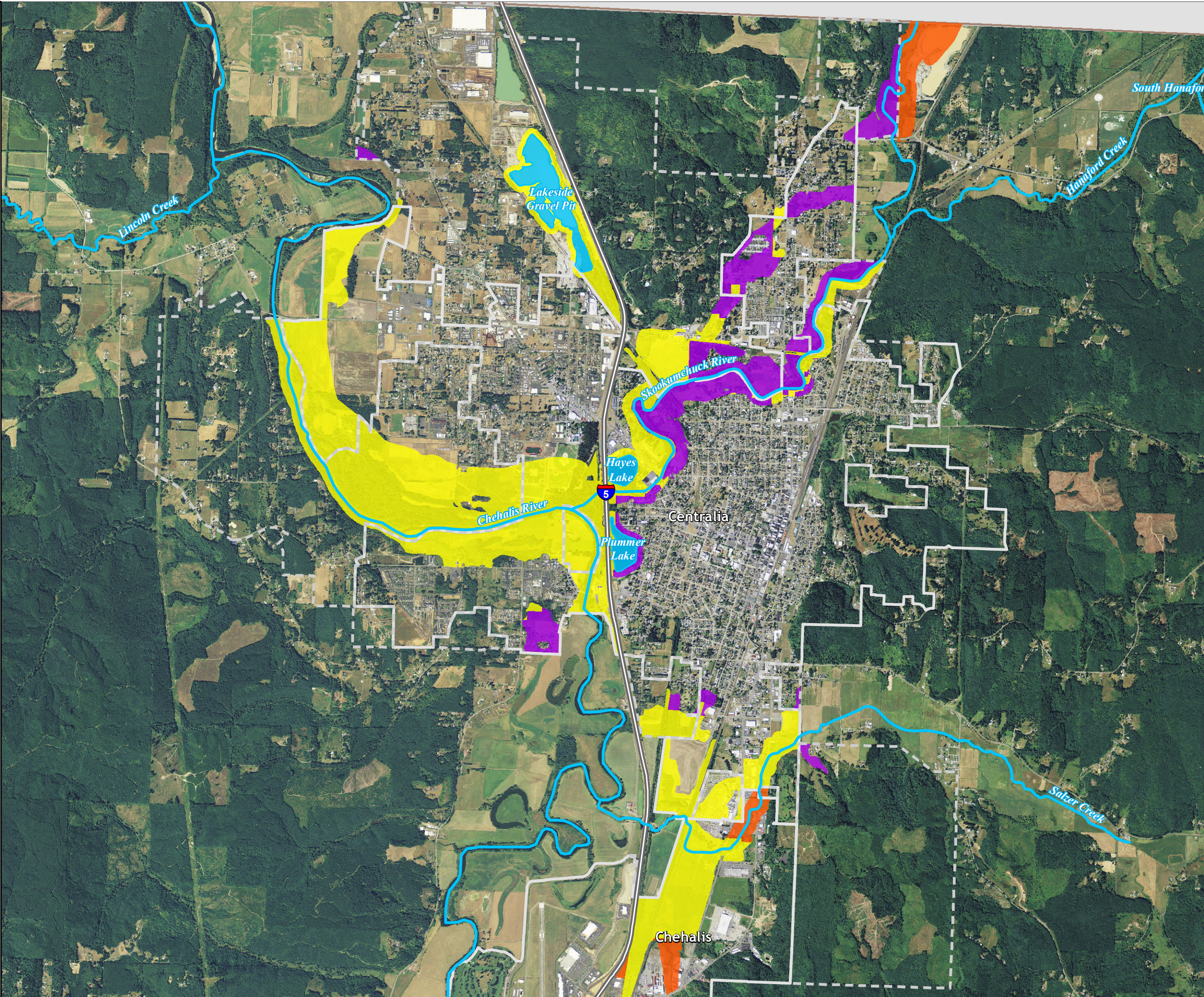
Data: Lewis County, USFWS NWI, FEMA, WA DNR, WSDOT, NRCS NAIP

Shoreline jurisdiction boundaries depicted on this map are approximate. They have not been formally delineated or surveyed and are intended for planning purposes only. Additional site-specific evaluation may be needed to confirm/verify information shown on this map.

Lewis County Coalition



City of Morton City of Winlock



Lewis County, Washington
Shoreline Master Program

Map 26C -
Shoreline Environment Designations

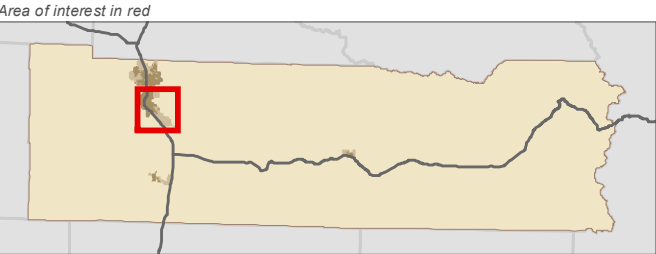
Figure: Chehalis

Date: 7/9/2015

Shoreline Environment Designation

- Aquatic
- Urban Conservancy
- Shoreline Residential
- High Intensity
- SMA Rivers & Streams
- SMA Lakes
- Highways
- City
- UGA

0 0.25 0.5 Miles 1:39,000



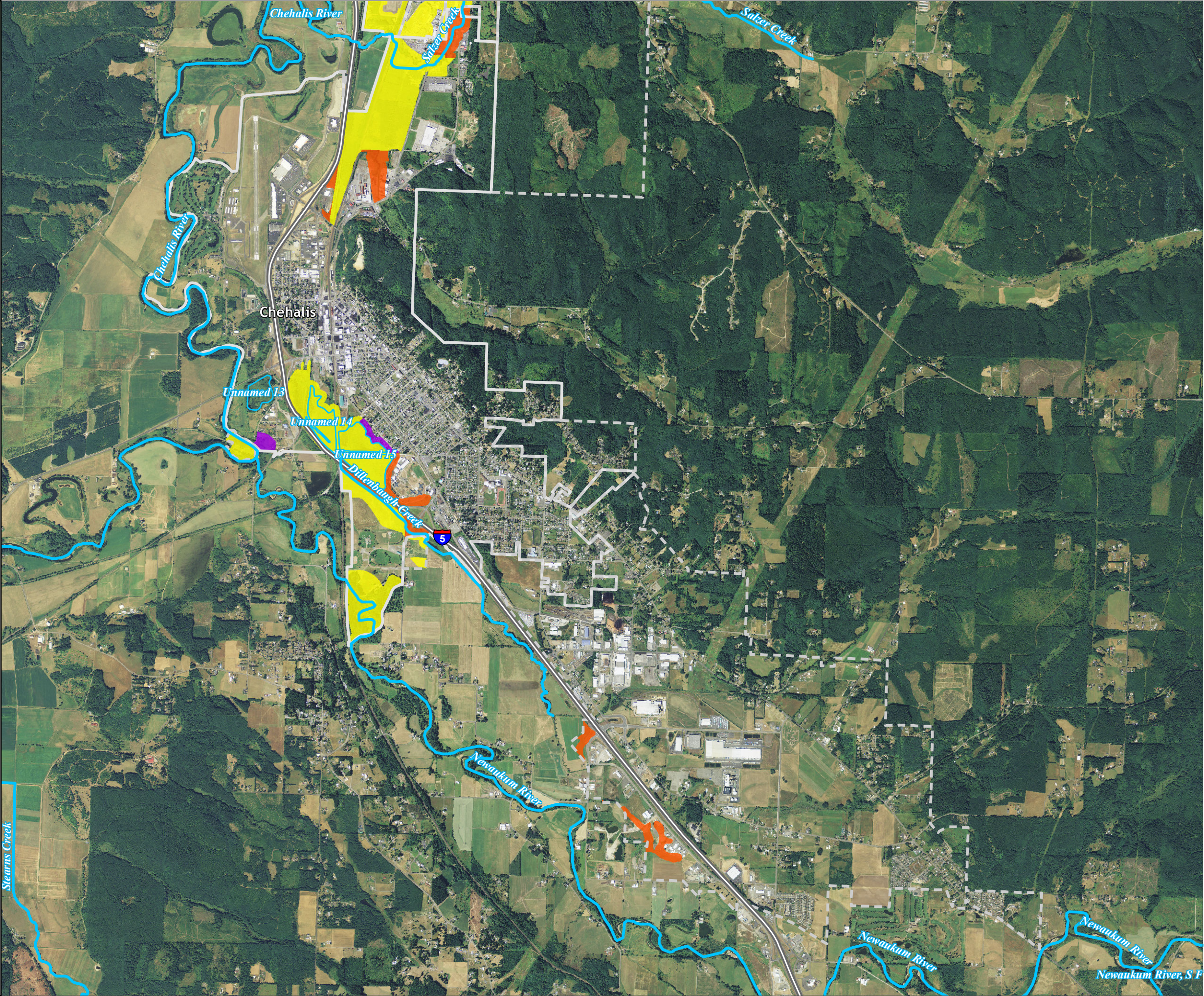
Data: Lewis County, USFWS NWI, FEMA, WA DNR, WSDOT, NRCS NAIP

Shoreline jurisdiction boundaries depicted on this map are approximate. They have not been formally delineated or surveyed and are intended for planning purposes only. Additional site-specific evaluation may be needed to confirm/verify information shown on this map.

Lewis County Coalition



City of Morton City of Winlock



Lewis County, Washington
Shoreline Master Program

Map 26C -
Shoreline Environment Designations

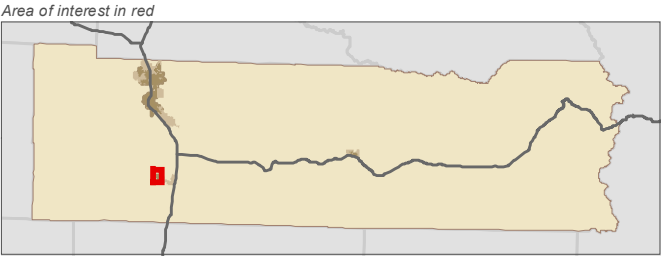
Figure: Winlock

Date: 7/9/2015

Shoreline Environment Designation

- Aquatic
- Urban Conservancy
- Shoreline Residential
- High Intensity
- SMA Rivers & Streams
- SMA Lakes
- Highways
- City
- UGA

0 0.075 0.15 Miles 1:13,000



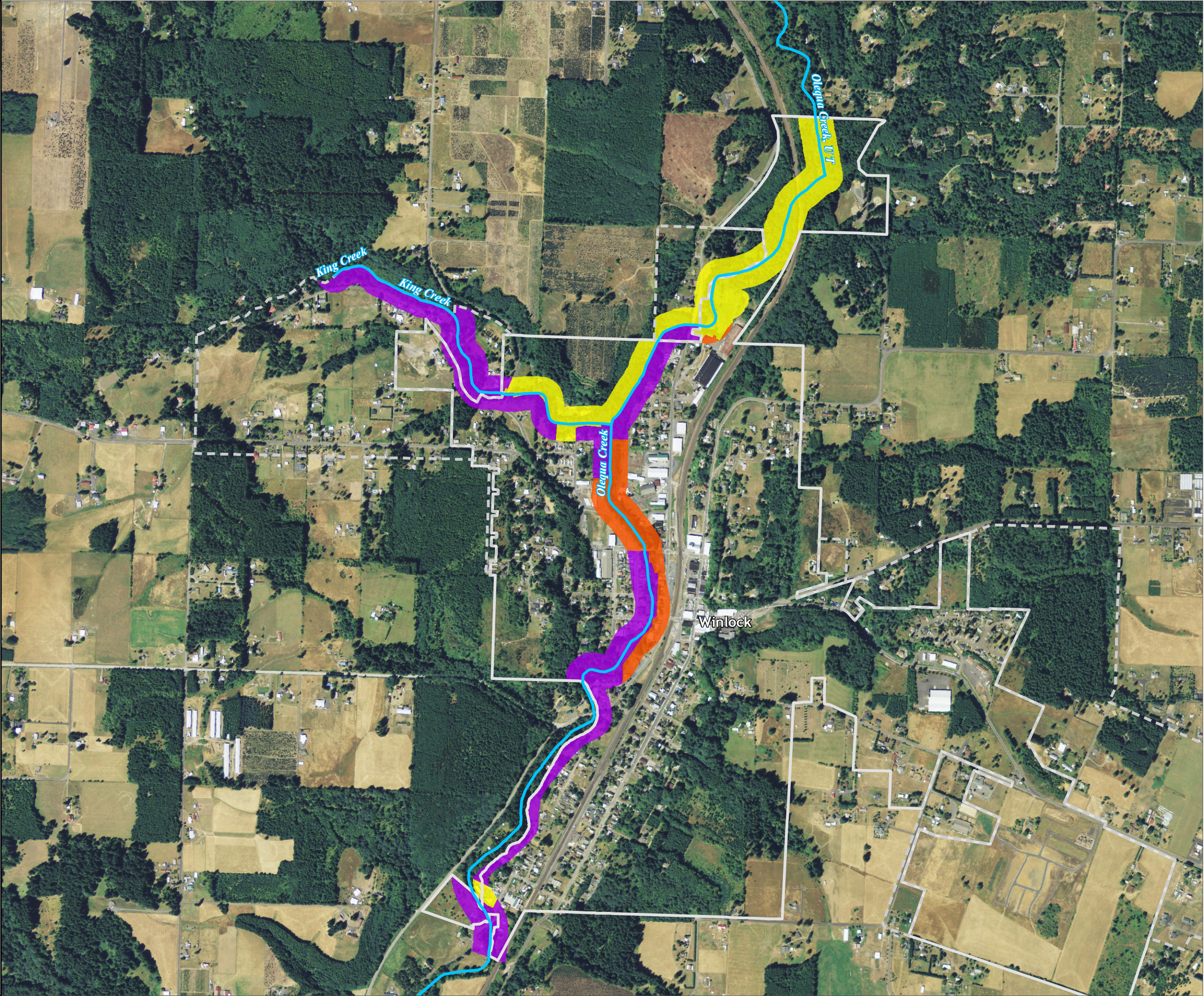
Data: Lewis County, USFWS NWI, FEMA, WA DNR, WSDOT, NRCS NAIP

Shoreline jurisdiction boundaries depicted on this map are approximate. They have not been formally delineated or surveyed and are intended for planning purposes only. Additional site-specific evaluation may be needed to confirm/verify information shown on this map.

Lewis County Coalition



City of Morton City of Winlock



Lewis County, Washington
Shoreline Master Program

Map 26C -
Shoreline Environment Designations

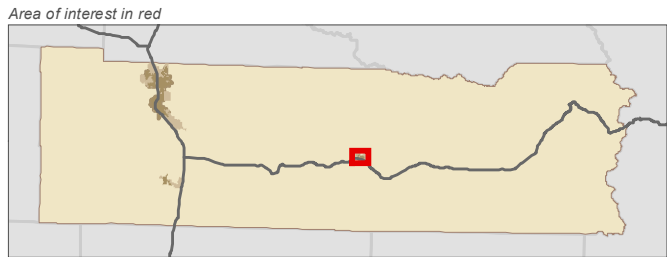
Figure: Morton

Date: 7/9/2015

Shoreline Environment Designation

- Aquatic
- Urban Conservancy
- Shoreline Residential
- High Intensity
- SMA Rivers & Streams
- SMA Lakes
- Highways
- City
- UGA

0 0.075 0.15 Miles
1:13,000



Data: Lewis County, USFWS NWI, FEMA, WA DNR, WSDOT, NRCS NAIP

Shoreline jurisdiction boundaries depicted on this map are approximate. They have not been formally delineated or surveyed and are intended for planning purposes only. Additional site-specific evaluation may be needed to confirm/verify information shown on this map.

Lewis County Coalition



City of Morton City of Winlock

