

Lewis County, Washington
Shoreline Master Program

Map 4C - Zoning
Figure: Centralia

Date: 6/3/2014

City of Centralia

- R2 (Very Low-Density Residential District)

R4 (Low-Density Residential District)

R8 (Moderate-Density Residential District)

R15 (Medium-High-Density Residential District)

R20 (High-Density Residential District)

C1 (General Commercial District)

C2 (Highway Commercial District)

C3 (Core Commercial District)

H1 (Health Service District)

LBD (Limited Business District)

M1 (Light Industrial District)

M2 (Industrial District)

OSPF (Open Space Public Facilities District)

PMP (Port Master Plan District)

SMA Rivers & Streams

SMA Lakes

Highways

Parcels

SMA Jurisdiction

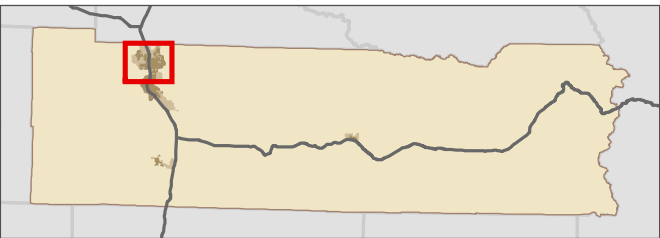
City

UGA

0 0.25 0.5
Miles 1:37,000



Area of interest in red



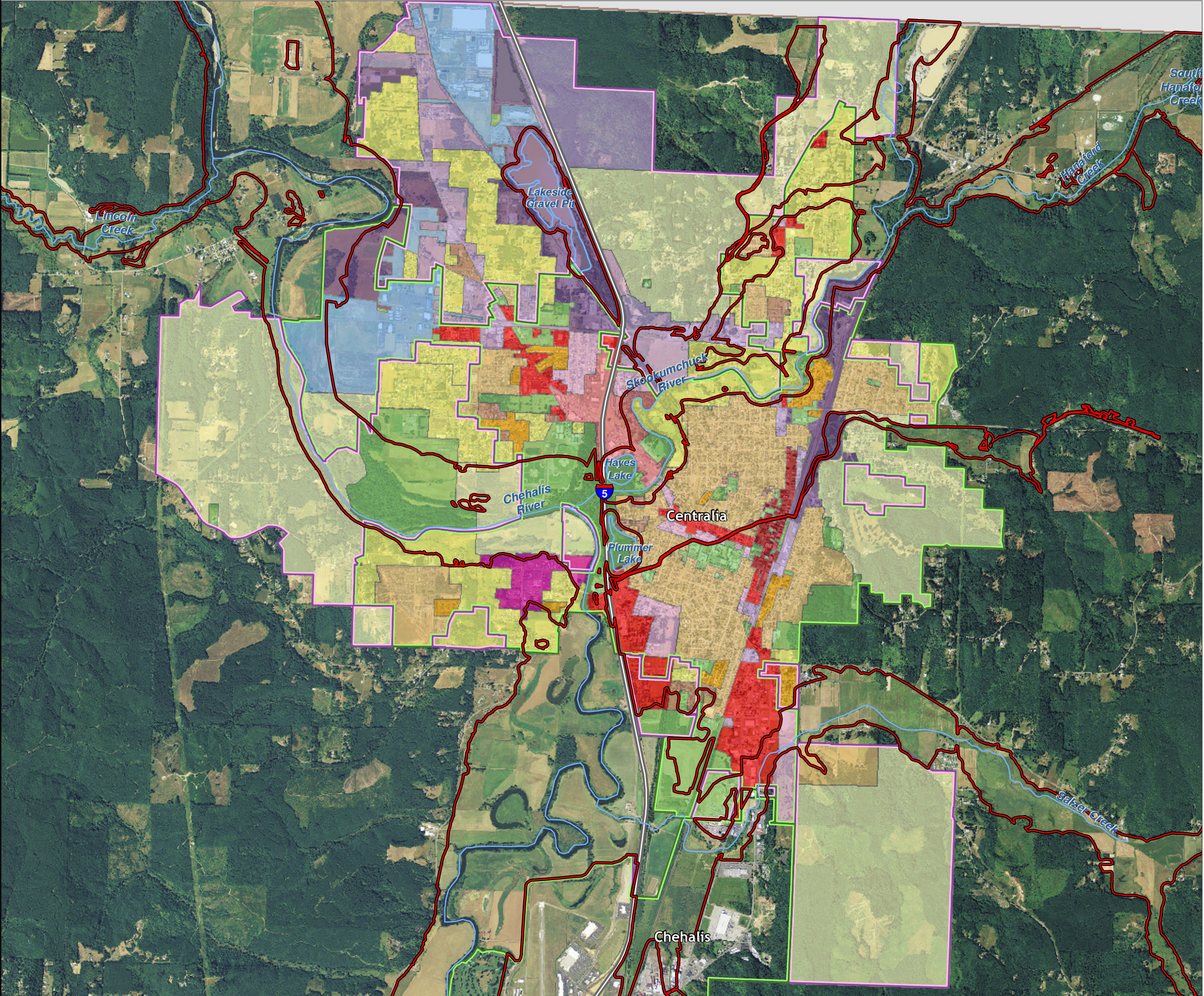
Data: Lewis County, USFWS NWI, FEMA, WA DNR, WSDOT, NRCS NAIP

Shoreline jurisdiction boundaries depicted on this map are approximate. They have not been formally delineated or surveyed and are intended for planning purposes only. Additional site-specific evaluation may be needed to confirm/verify information shown on this map.

Lewis County Coalition



City of Morton City of Winlock



Lewis County, Washington
Shoreline Master Program

Map 4C - Zoning
Figure: Chehalis

Date: 6/3/2014

City of Chehalis

- R1 (Single-Family Residential – Low Density)

R2 (Single-Family Residential – Medium Density)

R3 (Multifamily Residential – Medium Density)

R4 (Multifamily Residential – High Density)

RUGA (Urban Growth Area Residential)

CG (General Commercial)

CF (Freewy-Oriented Commercial)

CBD (Central Business District)

CO (Commercial Office/Mixed Use)

IL (Light Industrial)

IL / CG (Light Industrial/General Commercial)

IH / CG (Heavy Industrial/General Commercial)

EPF (Essential Public Facilities)
- SMA Rivers & Streams

SMA Lakes

Highways

Parcels

SMA Jurisdiction

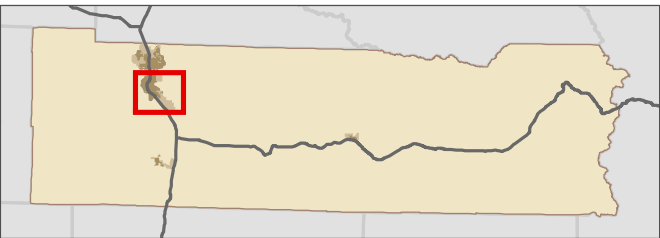
City

UGA

0 0.25 0.5
Miles 1:38,000



Area of interest in red



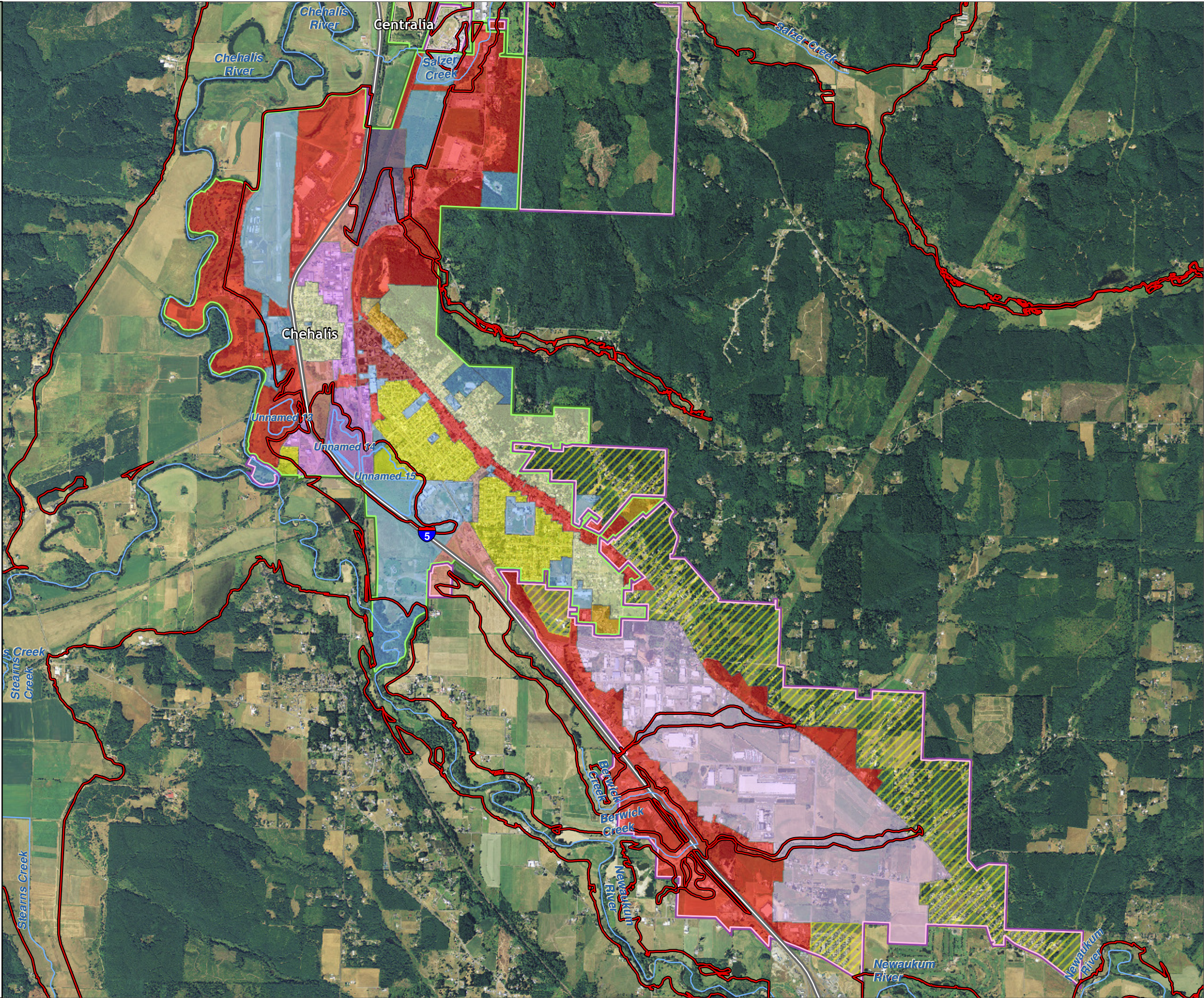
Data: Lewis County, USFWS NWI, FEMA, WA DNR, WSDOT, NRCS NAIP

Shoreline jurisdiction boundaries depicted on this map are approximate. They have not been formally delineated or surveyed and are intended for planning purposes only. Additional site-specific evaluation may be needed to confirm/verify information shown on this map.

Lewis County Coalition



City of Morton City of Winlock



Lewis County, Washington
Shoreline Master Program

Map 4C - Zoning
Figure: Morton

Date: 6/3/2014

City of Morton

- R1

R1 - PUD


RM


C


C-1


CS


I


I-1
-  SMA Rivers & Streams


 SMA Lakes

 Highways

 Parcels

 SMA Jurisdiction

 City

 UGA

Data: Lewis County, USFWS NWI, FEMA, WA DNR, WSDOT, NRCS NAIP

Shoreline jurisdiction boundaries depicted on this map are approximate. They have not been formally delineated or surveyed and are intended for planning purposes only. Additional site-specific evaluation may be needed to confirm/verify information shown on this map.

Lewis County Coalition

City of Morton City of Winlock

Lewis County, Washington
Shoreline Master Program

Map 4C - Zoning
Figure: Winlock

Date: 6/3/2014

City of Winlock

- LDR- 6 (Low Density Residential)

LDR -10 (Low Density Residential)

MDR (Moderate Density Residential)

C1 (Commercial)

C2 (Commercial)

MX (Mixed Use)

LI (light Industrial)

PF (Public Facilities)

SMA Rivers & Streams

SMA Lakes

Highways

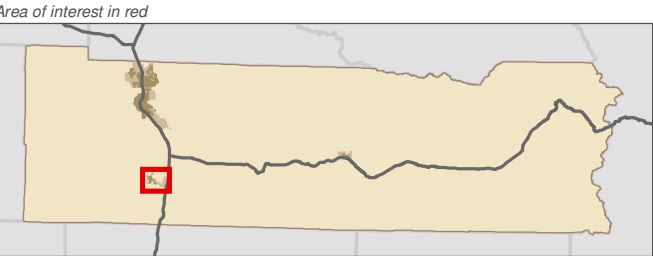
Parcels

SMA Jurisdiction

City

UGA

0 0.125 0.25
Miles
1:21,000



Data: Lewis County, USFWS NWI, FEMA, WA DNR, WSDOT, NRCS NAIP

Shoreline jurisdiction boundaries depicted on this map are approximate. They have not been formally delineated or surveyed and are intended for planning purposes only. Additional site-specific evaluation may be needed to confirm/verify information shown on this map.

Lewis County Coalition



City of Morton City of Winlock

