

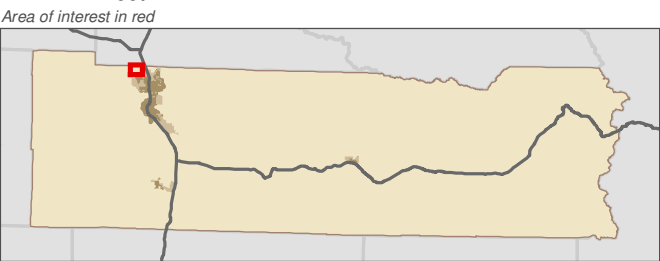
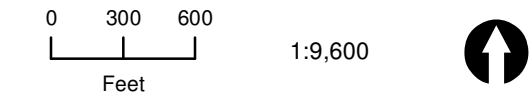
Lewis County, Washington
Shoreline Master Program

Map 6B - Water-Oriented Land Use
Figure: Centralia 1

Date: 6/3/2014

- Water Oriented Uses**

 - Non-Commercial Forest
 - Parks/Open Space
 - Retail Trade - Eating and Drinking
 - Recreational Activities
 - Hotels/Motels
 - Resorts and Group Camping
 - Fishing
 - Mining
- SMA Rivers & Streams
 - SMA Lakes
 - Highways
 - Railroads
 - Parcels
 - SMA Jurisdiction
 - City
 - UGA



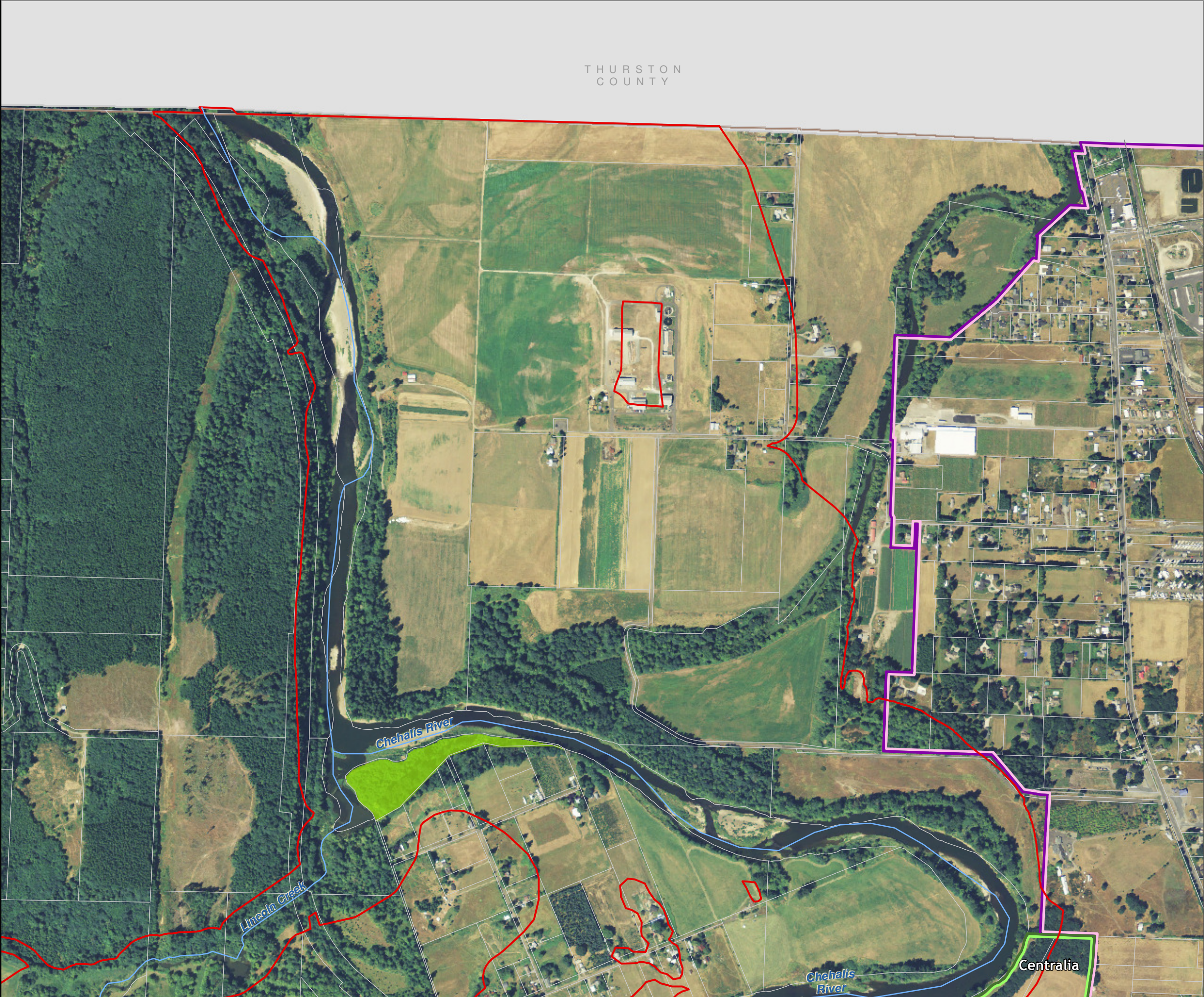
Data: Lewis County, USFWS NWI, FEMA, WA DNR, WSDOT, NRCS NAIP

Shoreline jurisdiction boundaries depicted on this map are approximate. They have not been formally delineated or surveyed and are intended for planning purposes only. Additional site-specific evaluation may be needed to confirm/verify information shown on this map.

Lewis County Coalition



City of Morton City of Winlock



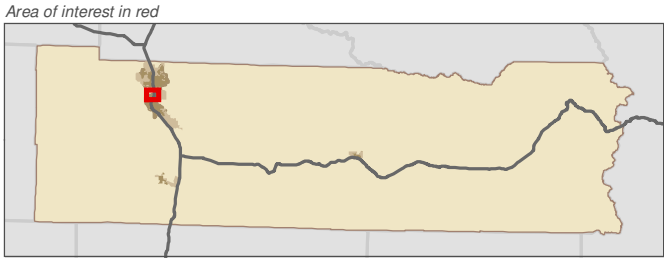
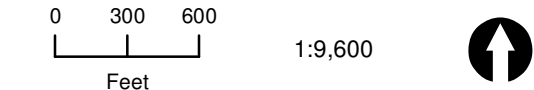
Lewis County, Washington
Shoreline Master Program

Map 6B - Water-Oriented Land Use
Figure: Centralia 10

Date: 6/3/2014

- Water Oriented Uses**

 - Non-Commercial Forest
 - Parks/Open Space
 - Retail Trade - Eating and Drinking
 - Recreational Activities
 - Hotels/Motels
 - Resorts and Group Camping
 - Fishing
 - Mining
- SMA Rivers & Streams
 - SMA Lakes
 - Highways
 - Railroads
 - Parcels
 - SMA Jurisdiction
 - City
 - UGA



Data: Lewis County, USFWS NWI, FEMA, WA DNR, WSDOT, NRCS NAIP

Shoreline jurisdiction boundaries depicted on this map are approximate. They have not been formally delineated or surveyed and are intended for planning purposes only. Additional site-specific evaluation may be needed to confirm/verify information shown on this map.

Lewis County Coalition



City of Morton City of Winlock



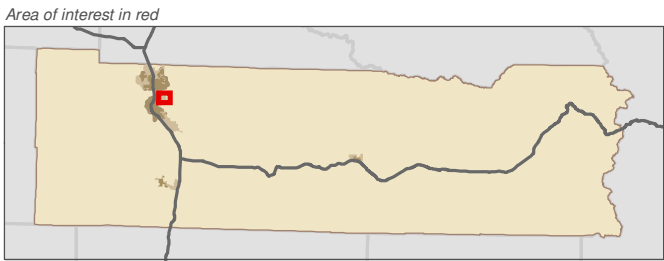
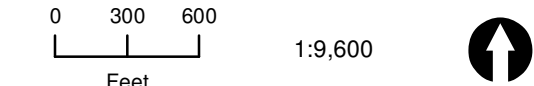
Lewis County, Washington
Shoreline Master Program

Map 6B - Water-Oriented Land Use
Figure: Centralia 11

Date: 6/3/2014

- Water Oriented Uses**

 - Non-Commercial Forest
 - Parks/Open Space
 - Retail Trade - Eating and Drinking
 - Recreational Activities
 - Hotels/Motels
 - Resorts and Group Camping
 - Fishing
 - Mining
- SMA Rivers & Streams
 - SMA Lakes
 - Highways
 - Railroads
 - Parcels
 - SMA Jurisdiction
 - City
 - UGA



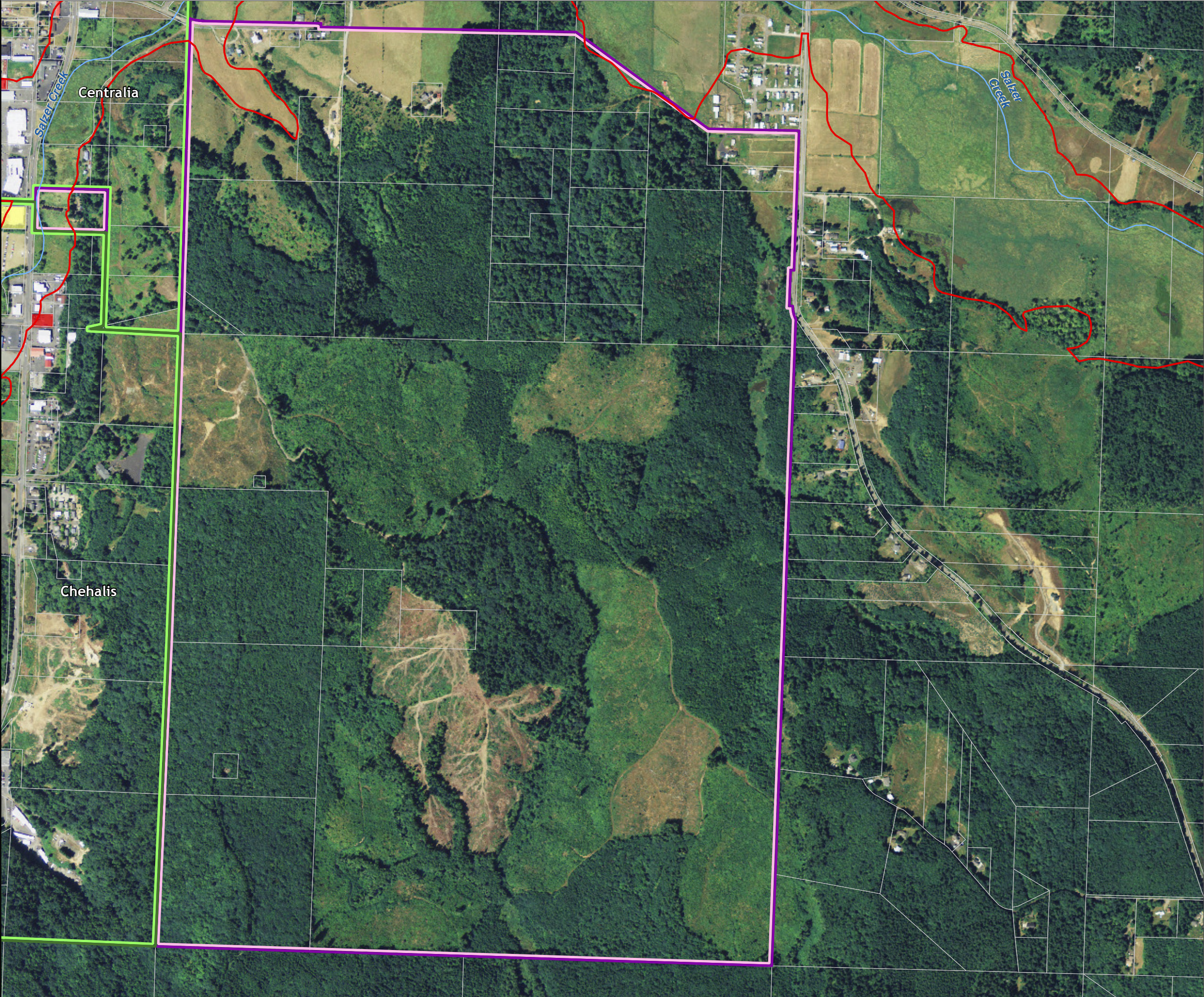
Data: Lewis County, USFWS NWI, FEMA, WA DNR, WSDOT, NRCS NAIP

Shoreline jurisdiction boundaries depicted on this map are approximate. They have not been formally delineated or surveyed and are intended for planning purposes only. Additional site-specific evaluation may be needed to confirm/verify information shown on this map.

Lewis County Coalition



City of Morton City of Winlock



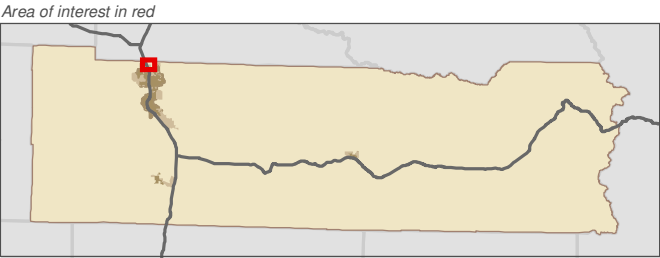
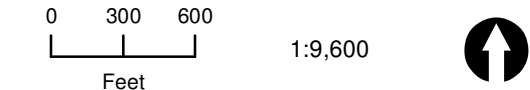
Lewis County, Washington
Shoreline Master Program

Map 6B - Water-Oriented Land Use
Figure: Centralia 2

Date: 6/3/2014

- Water Oriented Uses**

 - Non-Commercial Forest
 - Parks/Open Space
 - Retail Trade - Eating and Drinking
 - Recreational Activities
 - Hotels/Motels
 - Resorts and Group Camping
 - Fishing
 - Mining
- SMA Rivers & Streams
 - SMA Lakes
 - Highways
 - Railroads
 - Parcels
 - SMA Jurisdiction
 - City
 - UGA



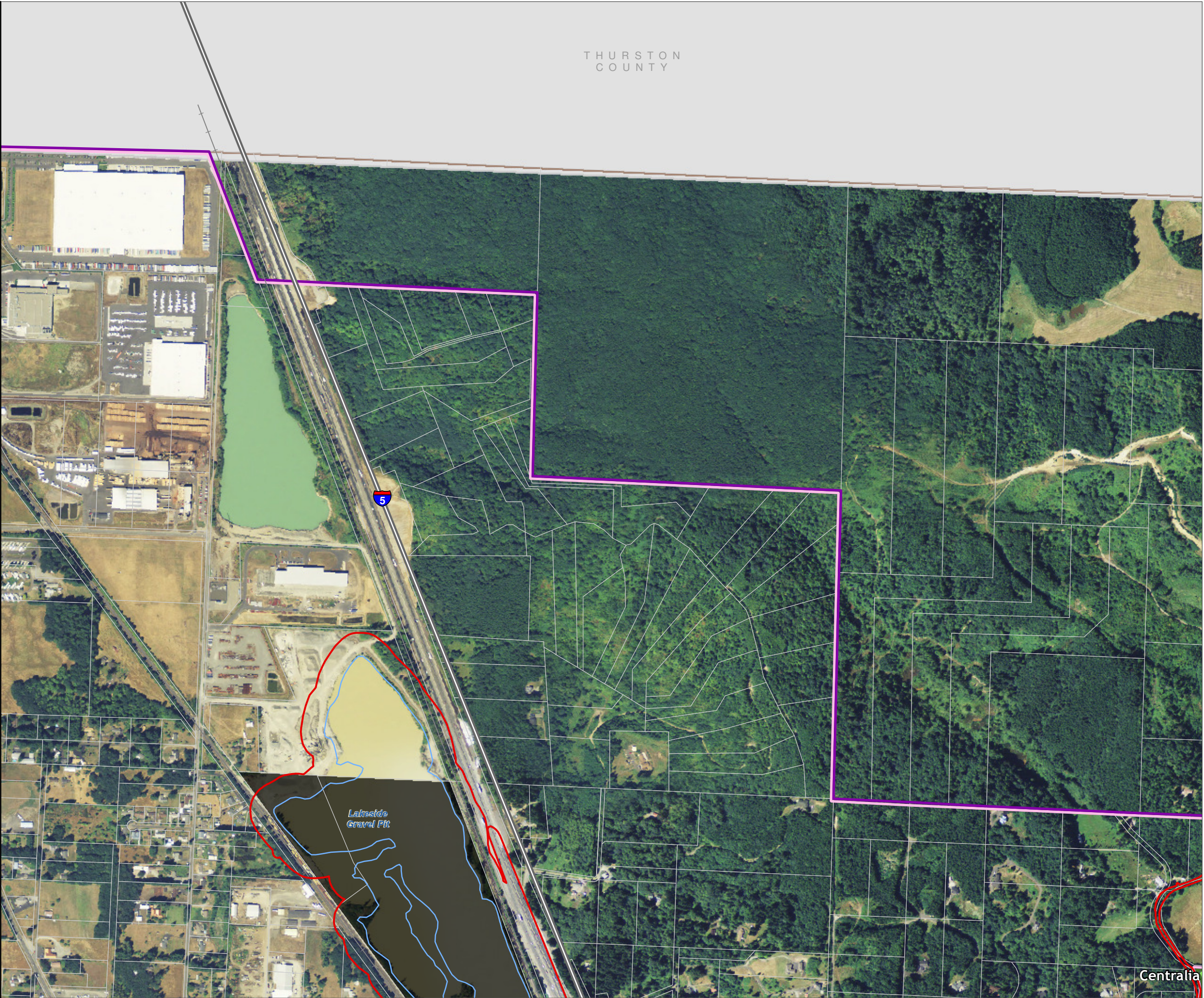
Data: Lewis County, USFWS NWI, FEMA, WA DNR, WSDOT, NRCS NAIP

Shoreline jurisdiction boundaries depicted on this map are approximate. They have not been formally delineated or surveyed and are intended for planning purposes only. Additional site-specific evaluation may be needed to confirm/verify information shown on this map.

Lewis County Coalition



City of Morton City of Winlock



Centralia

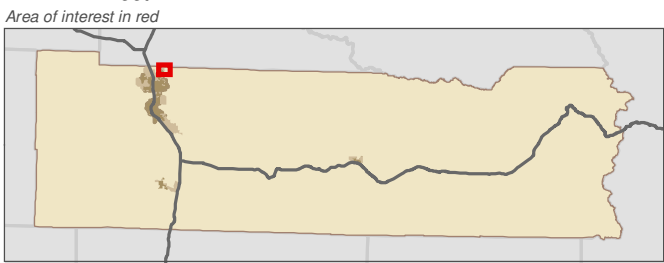
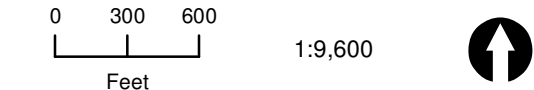
Lewis County, Washington
Shoreline Master Program

Map 6B - Water-Oriented Land Use
Figure: Centralia 3

Date: 6/3/2014

- Water Oriented Uses**

 - Non-Commercial Forest
 - Parks/Open Space
 - Retail Trade - Eating and Drinking
 - Recreational Activities
 - Hotels/Motels
 - Resorts and Group Camping
 - Fishing
 - Mining
- SMA Rivers & Streams
 - SMA Lakes
 - Highways
 - Railroads
 - Parcels
 - SMA Jurisdiction
 - City
 - UGA



Data: Lewis County, USFWS NWI, FEMA, WA DNR, WSDOT, NRCS NAIP

Shoreline jurisdiction boundaries depicted on this map are approximate. They have not been formally delineated or surveyed and are intended for planning purposes only. Additional site-specific evaluation may be needed to confirm/verify information shown on this map.

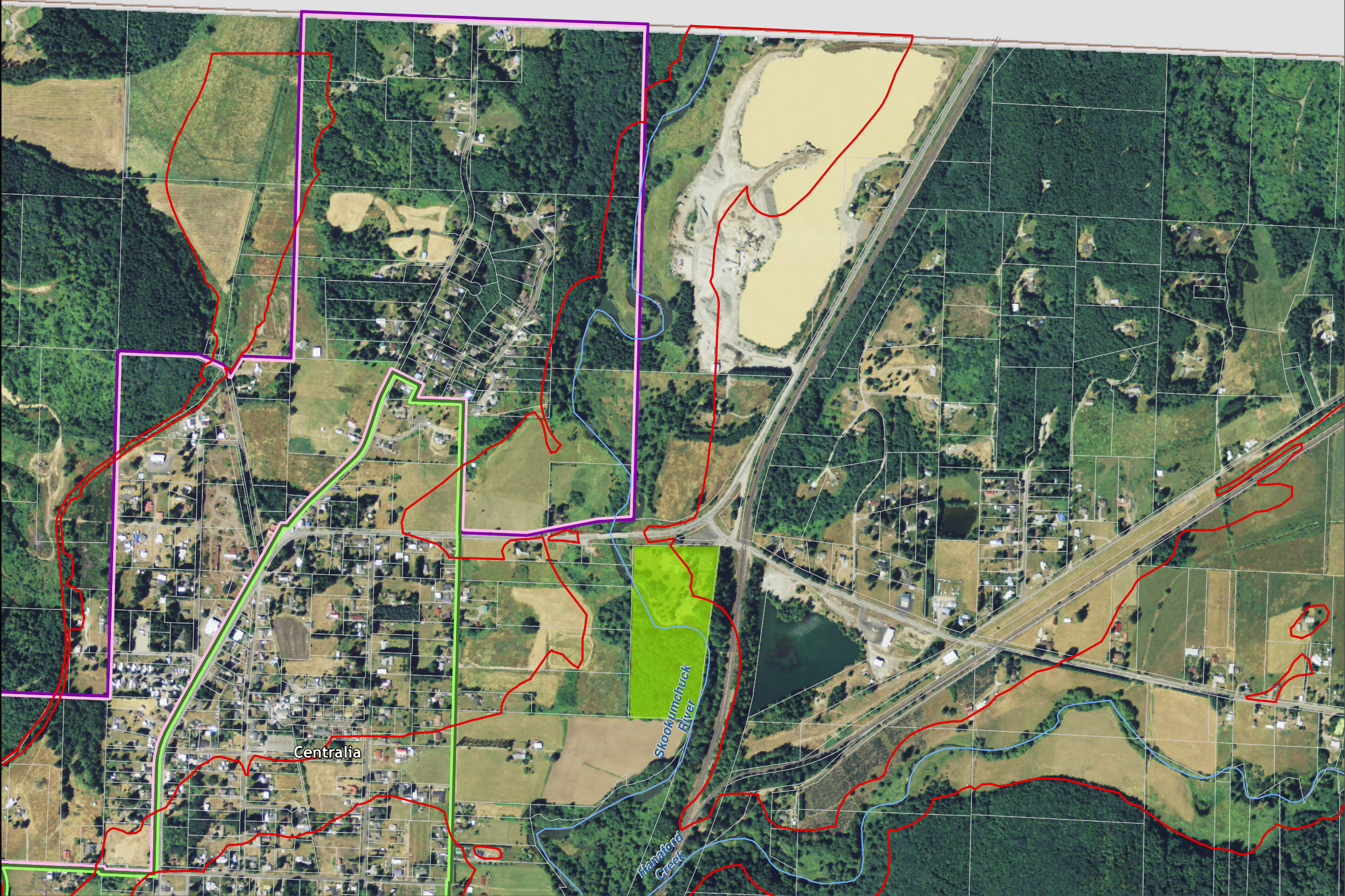
Lewis County Coalition



City of Morton City of Winlock



THURSTON
COUNTY



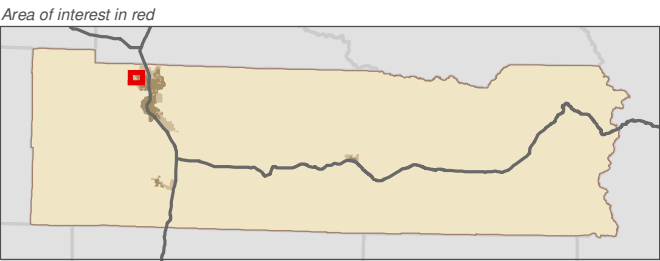
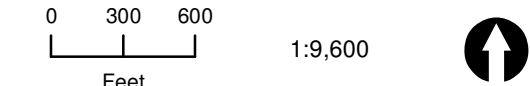
Lewis County, Washington
Shoreline Master Program

Map 6B - Water-Oriented Land Use
Figure: Centralia 4

Date: 6/3/2014

- Water Oriented Uses**

 - Non-Commercial Forest
 - Parks/Open Space
 - Retail Trade - Eating and Drinking
 - Recreational Activities
 - Hotels/Motels
 - Resorts and Group Camping
 - Fishing
 - Mining
- SMA Rivers & Streams
 - SMA Lakes
 - Highways
 - Railroads
 - Parcels
 - SMA Jurisdiction
 - City
 - UGA



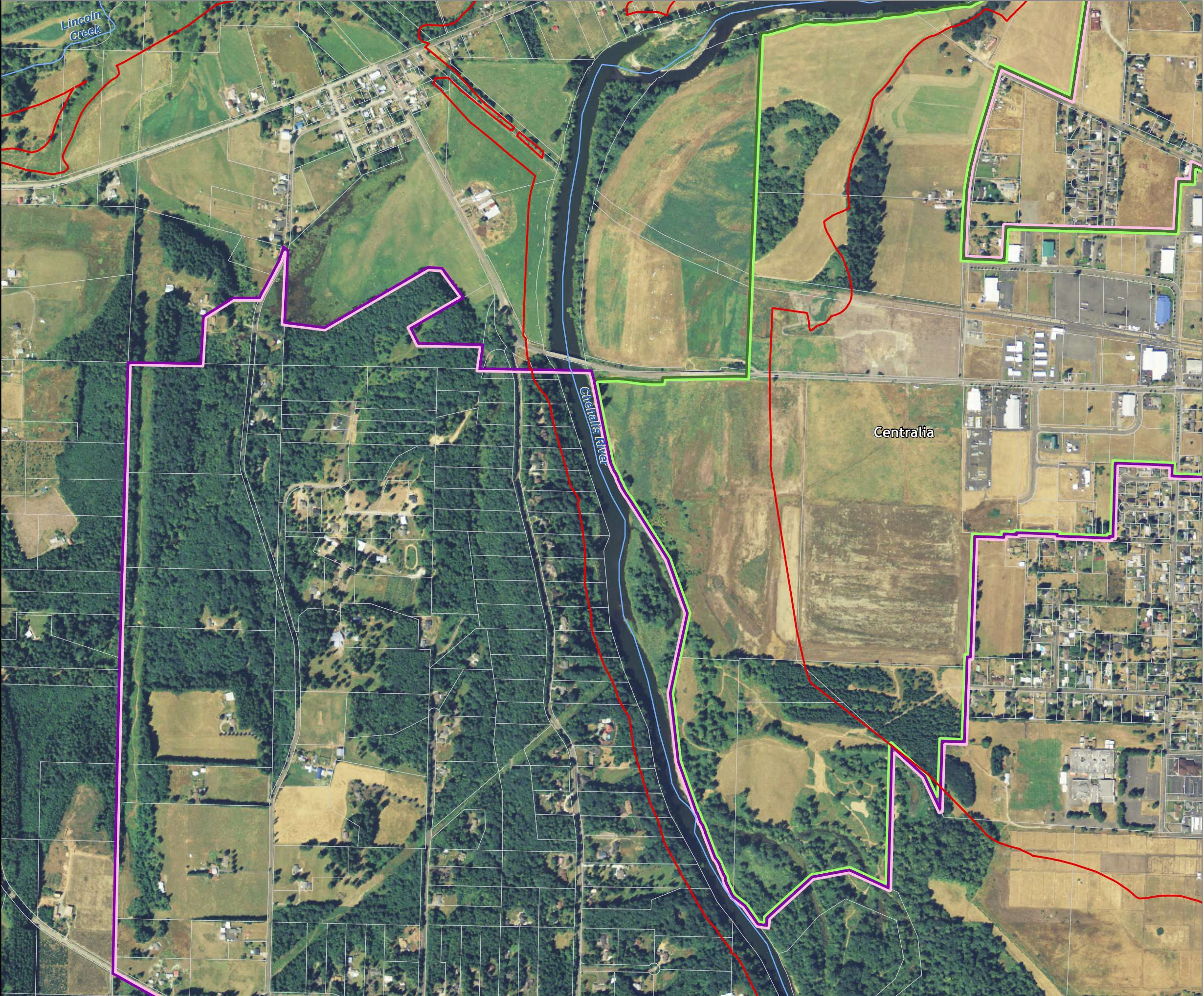
Data: Lewis County, USFWS NWI, FEMA, WA DNR, WSDOT, NRCS NAIP

Shoreline jurisdiction boundaries depicted on this map are approximate. They have not been formally delineated or surveyed and are intended for planning purposes only. Additional site-specific evaluation may be needed to confirm/verify information shown on this map.

Lewis County Coalition



City of Morton City of Winlock



Lewis County, Washington
Shoreline Master Program

Map 6B - Water-Oriented Land Use
Figure: Centralia 5

Date: 6/3/2014

- Water Oriented Uses**

 - Non-Commercial Forest
 - Parks/Open Space
 - Retail Trade - Eating and Drinking
 - Recreational Activities
 - Hotels/Motels
 - Resorts and Group Camping
 - Fishing
 - Mining
- SMA Rivers & Streams

SMA Lakes

Highways

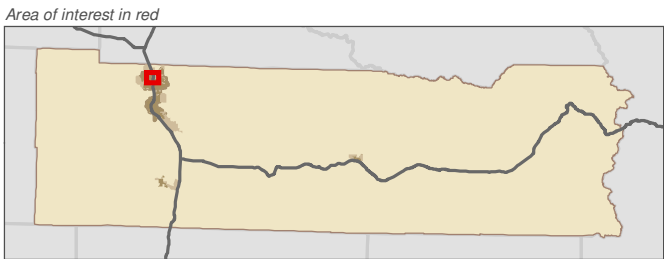
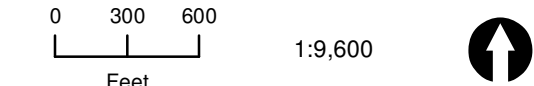
Railroads

Parcels

SMA Jurisdiction

City

UGA



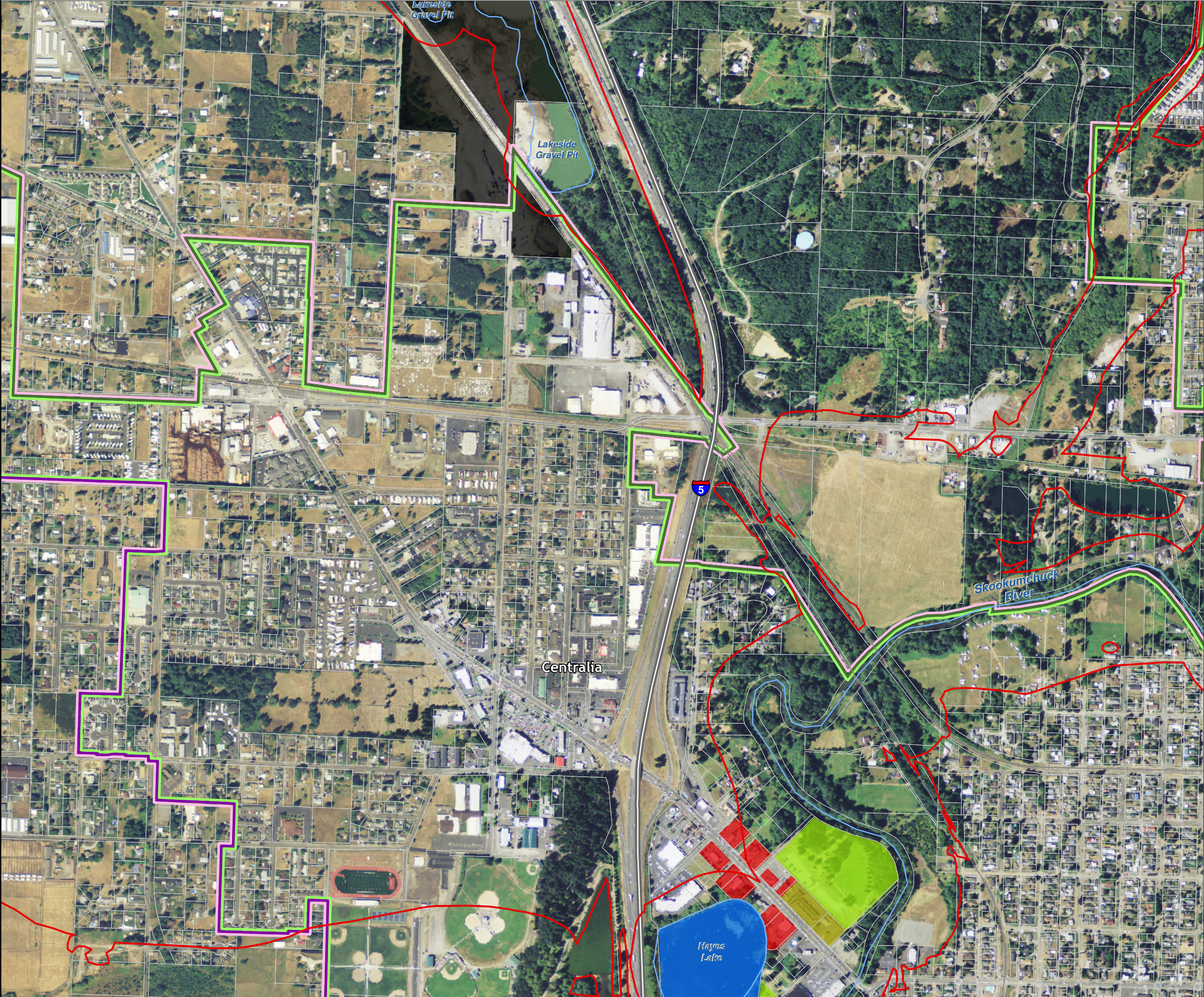
Data: Lewis County, USFWS NWI, FEMA, WA DNR, WSDOT, NRCS NAIP

Shoreline jurisdiction boundaries depicted on this map are approximate. They have not been formally delineated or surveyed and are intended for planning purposes only. Additional site-specific evaluation may be needed to confirm/verify information shown on this map.

Lewis County Coalition



City of Morton City of Winlock



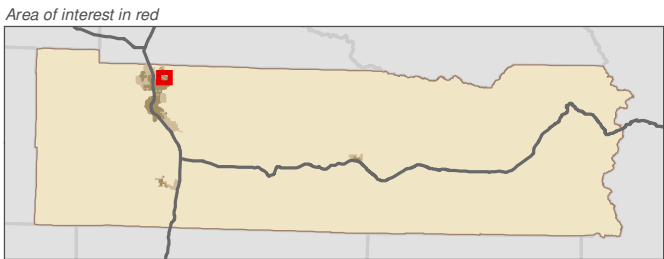
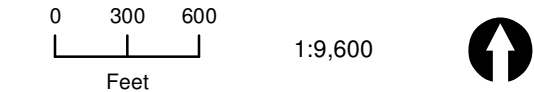
Lewis County, Washington
Shoreline Master Program

Map 6B - Water-Oriented Land Use
Figure: Centralia 6

Date: 6/3/2014

- Water Oriented Uses**

 - Non-Commercial Forest
 - Parks/Open Space
 - Retail Trade - Eating and Drinking
 - Recreational Activities
 - Hotels/Motels
 - Resorts and Group Camping
 - Fishing
 - Mining
- SMA Rivers & Streams
 - SMA Lakes
 - Highways
 - Railroads
 - Parcels
 - SMA Jurisdiction
 - City
 - UGA



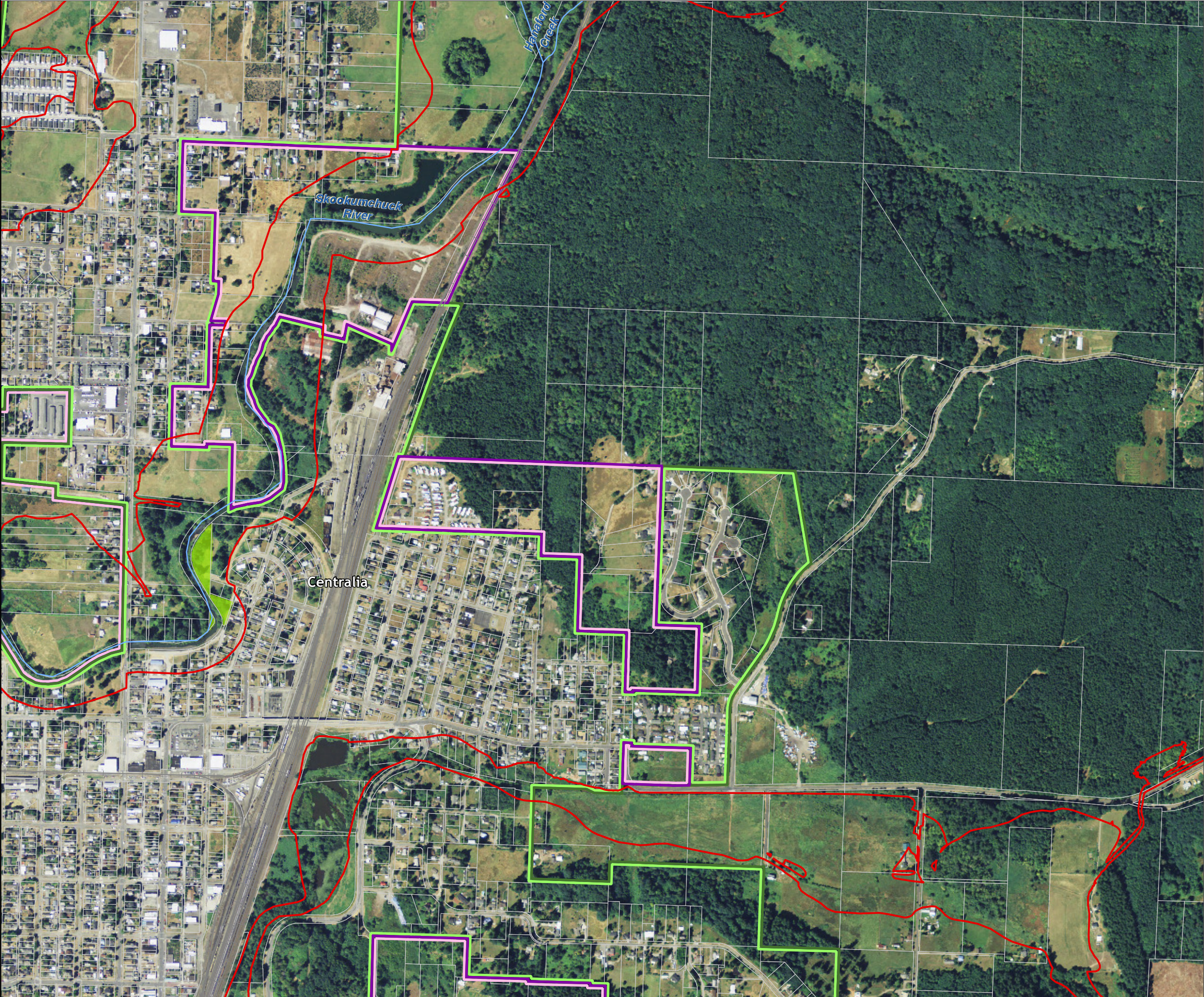
Data: Lewis County, USFWS NWI, FEMA, WA DNR, WSDOT, NRCS NAIP

Shoreline jurisdiction boundaries depicted on this map are approximate. They have not been formally delineated or surveyed and are intended for planning purposes only. Additional site-specific evaluation may be needed to confirm/verify information shown on this map.

Lewis County Coalition



City of Morton City of Winlock



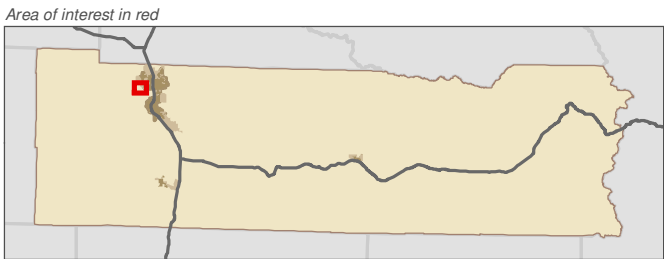
Lewis County, Washington
Shoreline Master Program

Map 6B - Water-Oriented Land Use
Figure: Centralia 7

Date: 6/3/2014

- Water Oriented Uses**

 - Non-Commercial Forest
 - Parks/Open Space
 - Retail Trade - Eating and Drinking
 - Recreational Activities
 - Hotels/Motels
 - Resorts and Group Camping
 - Fishing
 - Mining
- SMA Rivers & Streams
 - SMA Lakes
 - Highways
 - Railroads
 - Parcels
 - SMA Jurisdiction
 - City
 - UGA



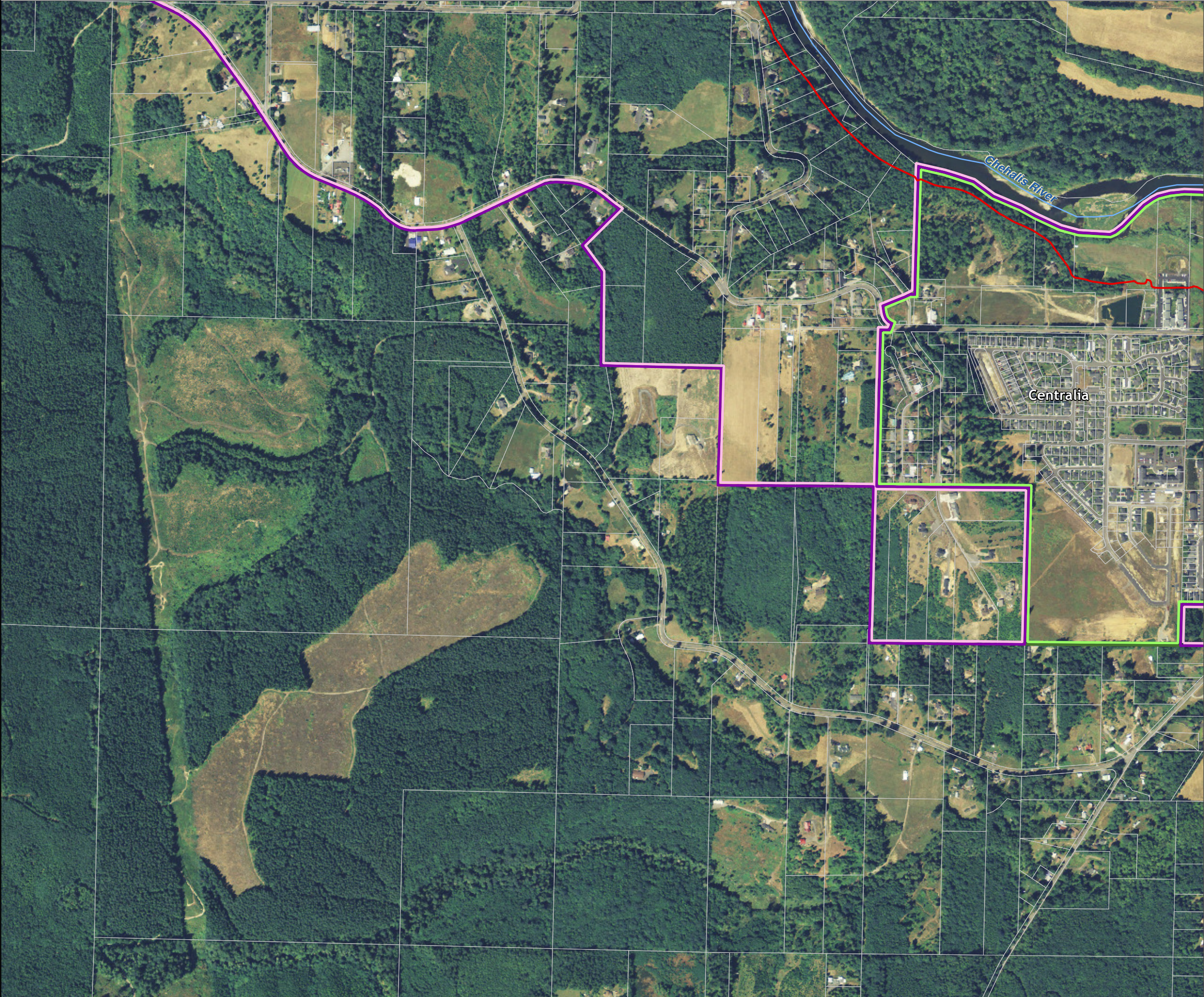
Data: Lewis County, USFWS NWI, FEMA, WA DNR, WSDOT, NRCS NAIP

Shoreline jurisdiction boundaries depicted on this map are approximate. They have not been formally delineated or surveyed and are intended for planning purposes only. Additional site-specific evaluation may be needed to confirm/verify information shown on this map.

Lewis County Coalition



City of Morton City of Winlock



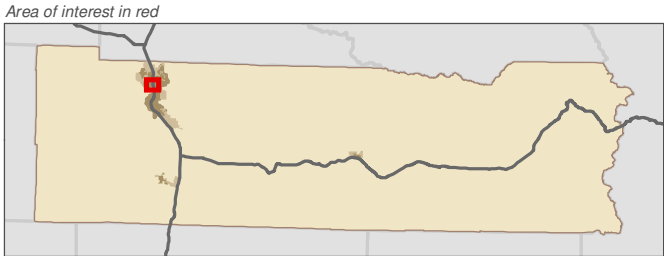
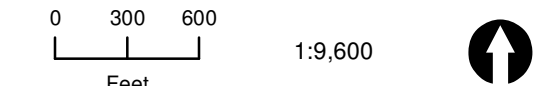
Lewis County, Washington
Shoreline Master Program

Map 6B - Water-Oriented Land Use
Figure: Centralia 8

Date: 6/3/2014

- Water Oriented Uses**

 - Non-Commercial Forest
 - Parks/Open Space
 - Retail Trade - Eating and Drinking
 - Recreational Activities
 - Hotels/Motels
 - Resorts and Group Camping
 - Fishing
 - Mining
- SMA Rivers & Streams
 - SMA Lakes
 - Highways
 - Railroads
 - Parcels
 - SMA Jurisdiction
 - City
 - UGA



Data: Lewis County, USFWS NWI, FEMA, WA DNR, WSDOT, NRCS NAIP

Shoreline jurisdiction boundaries depicted on this map are approximate. They have not been formally delineated or surveyed and are intended for planning purposes only. Additional site-specific evaluation may be needed to confirm/verify information shown on this map.

Lewis County Coalition



City of Morton City of Winlock



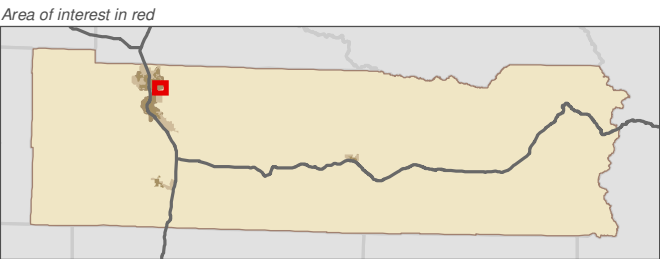
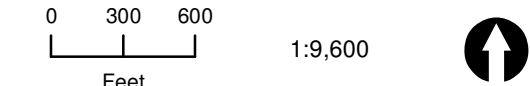
Lewis County, Washington
Shoreline Master Program

Map 6B - Water-Oriented Land Use
Figure: Centralia 9

Date: 6/3/2014

- Water Oriented Uses**

 - Non-Commercial Forest
 - Parks/Open Space
 - Retail Trade - Eating and Drinking
 - Recreational Activities
 - Hotels/Motels
 - Resorts and Group Camping
 - Fishing
 - Mining
- SMA Rivers & Streams
 - SMA Lakes
 - Highways
 - Railroads
 - Parcels
 - SMA Jurisdiction
 - City
 - UGA



Data: Lewis County, USFWS NWI, FEMA, WA DNR, WSDOT, NRCS NAIP

Shoreline jurisdiction boundaries depicted on this map are approximate. They have not been formally delineated or surveyed and are intended for planning purposes only. Additional site-specific evaluation may be needed to confirm/verify information shown on this map.

Lewis County Coalition



City of Morton City of Winlock

