

Lewis County, Washington
Shoreline Master Program

Map 12C - Liquefaction Hazard
Figure: Centralia

Date: 6/3/2014

Liquefaction Hazard

- High
- Moderate to High
- Low to Moderate
- Very Low to Low
- N/A (bedrock, peat, ice or water)

SMA Rivers & Streams

SMA Lakes

Highways

SMA Jurisdiction

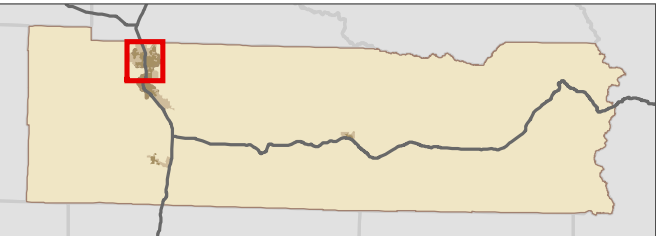
City

UGA

0 0.25 0.5 Miles
1:38,000



Area of interest in red

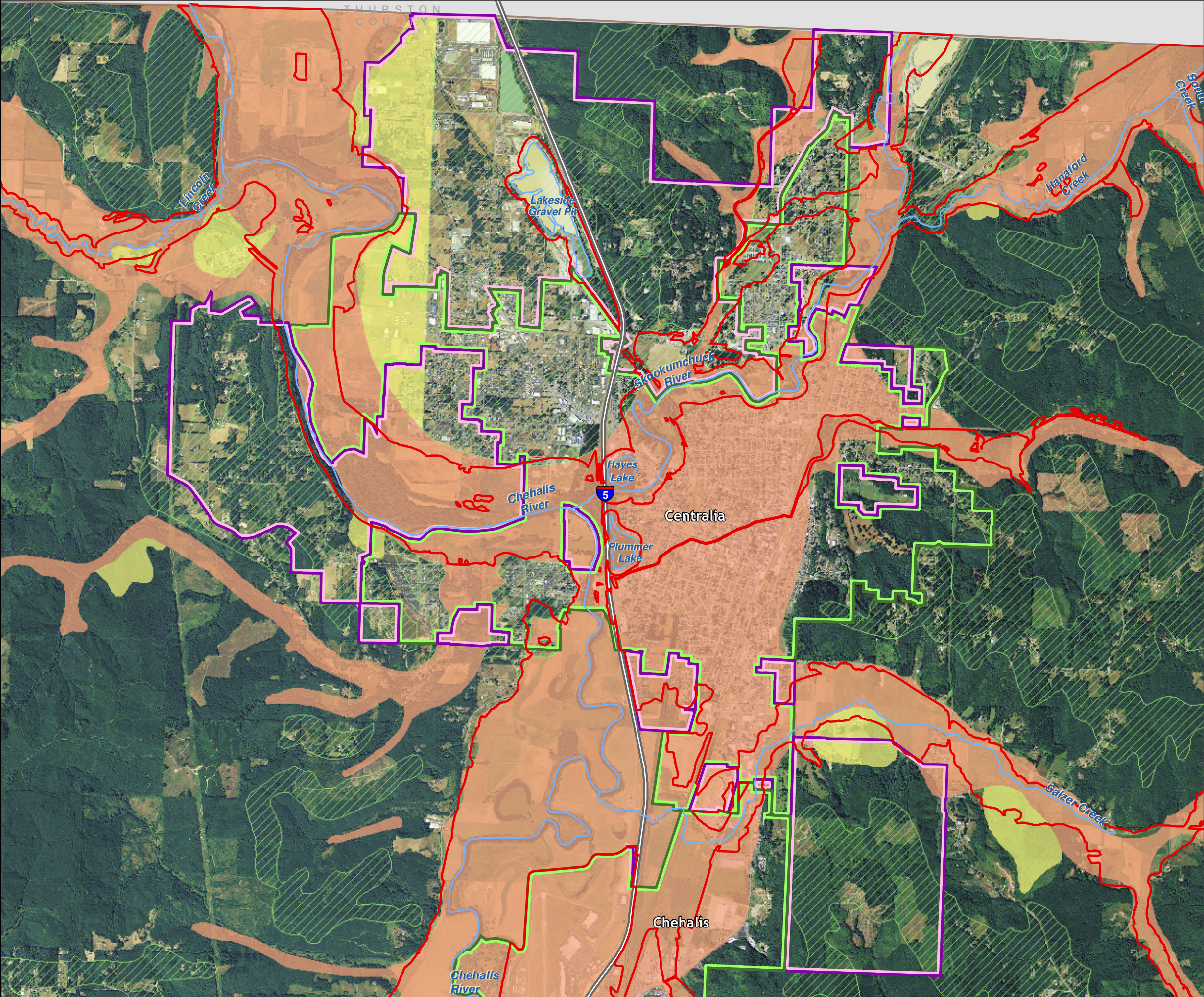


Data: Lewis County, USFWS NWI, FEMA, WA DNR, WSDOT, NRCS NAIP
Shoreline jurisdiction boundaries depicted on this map are approximate. They have not been formally delineated or surveyed and are intended for planning purposes only. Additional site-specific evaluation may be needed to confirm/verify information shown on this map.

Lewis County Coalition



City of Morton City of Winlock



Lewis County, Washington
Shoreline Master Program

Map 12C - Liquefaction Hazard
Figure: Chehalis

Date: 6/3/2014

Liquefaction Hazard

- High
- Moderate to High
- Low to Moderate
- Very Low to Low
- N/A (bedrock, peat, ice or water)

SMA Rivers & Streams

SMA Lakes

Highways

SMA Jurisdiction

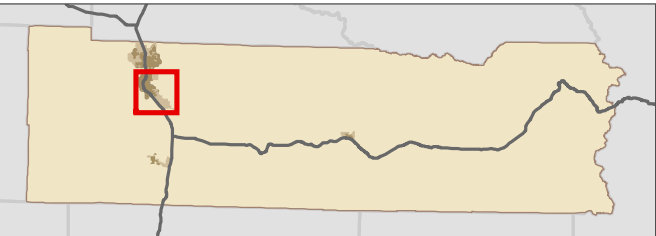
City

UGA

0 0.25 0.5 Miles
1:39,000



Area of interest in red

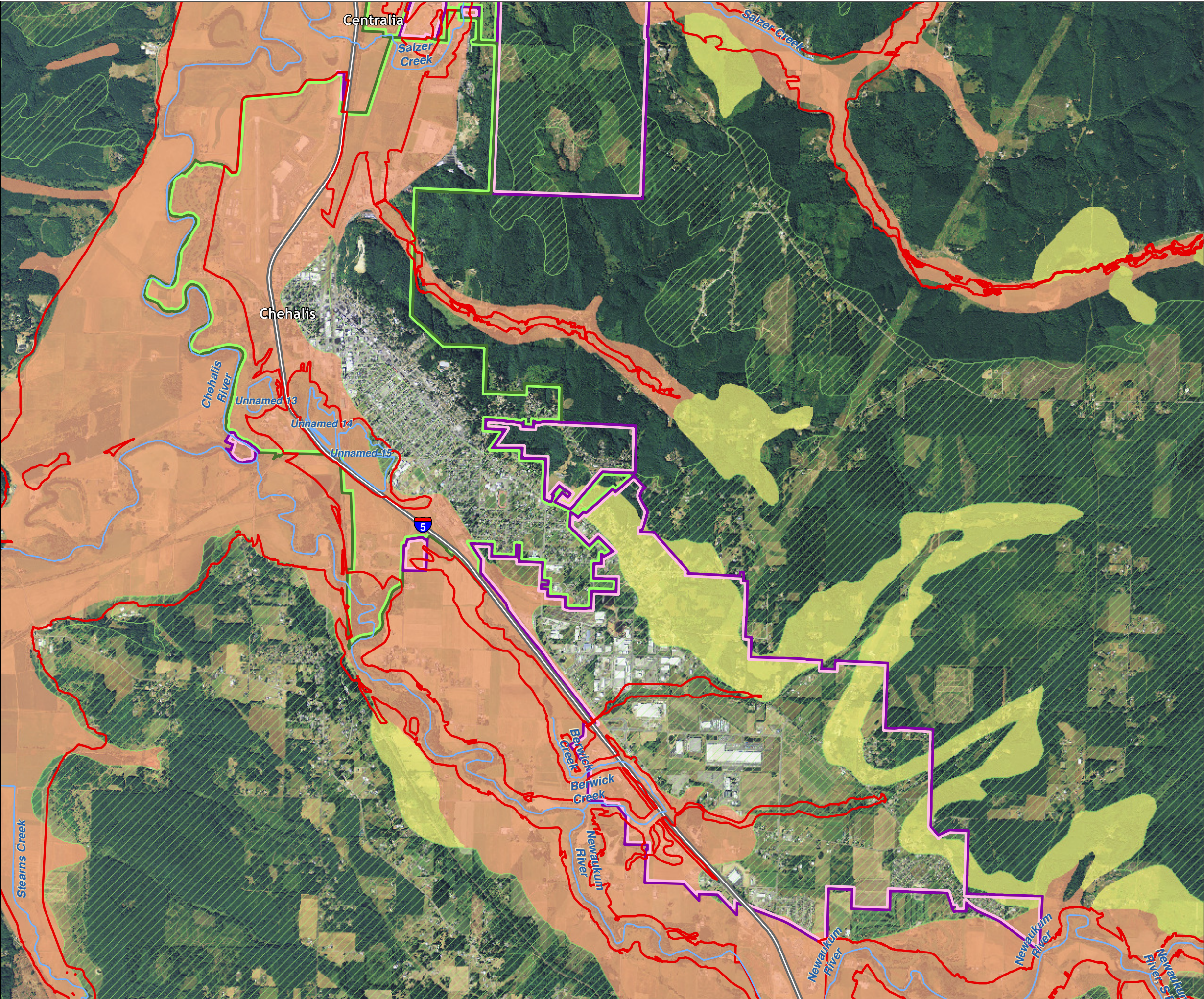


Data: Lewis County, USFWS NWI, FEMA, WA DNR, WSDOT, NRCS NAIP
Shoreline jurisdiction boundaries depicted on this map are approximate. They have not been formally delineated or surveyed and are intended for planning purposes only. Additional site-specific evaluation may be needed to confirm/verify information shown on this map.

Lewis County Coalition



City of Morton City of Winlock



Map 12C - Liquefaction Hazard
Figure: Morton

Date: 6/3/2014

Liquefaction Hazard

- High
- Moderate to High
- Low to Moderate
- Very Low to Low
- N/A (bedrock, peat, ice or water)

SMA Rivers & Streams

SMA Lakes

Highways

SMA Jurisdiction

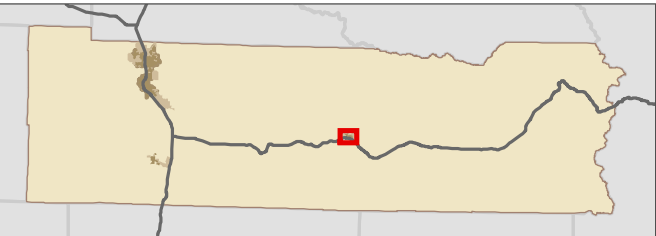
City

UGA

0 0.075 0.15 Miles
1:13,000



Area of interest in red

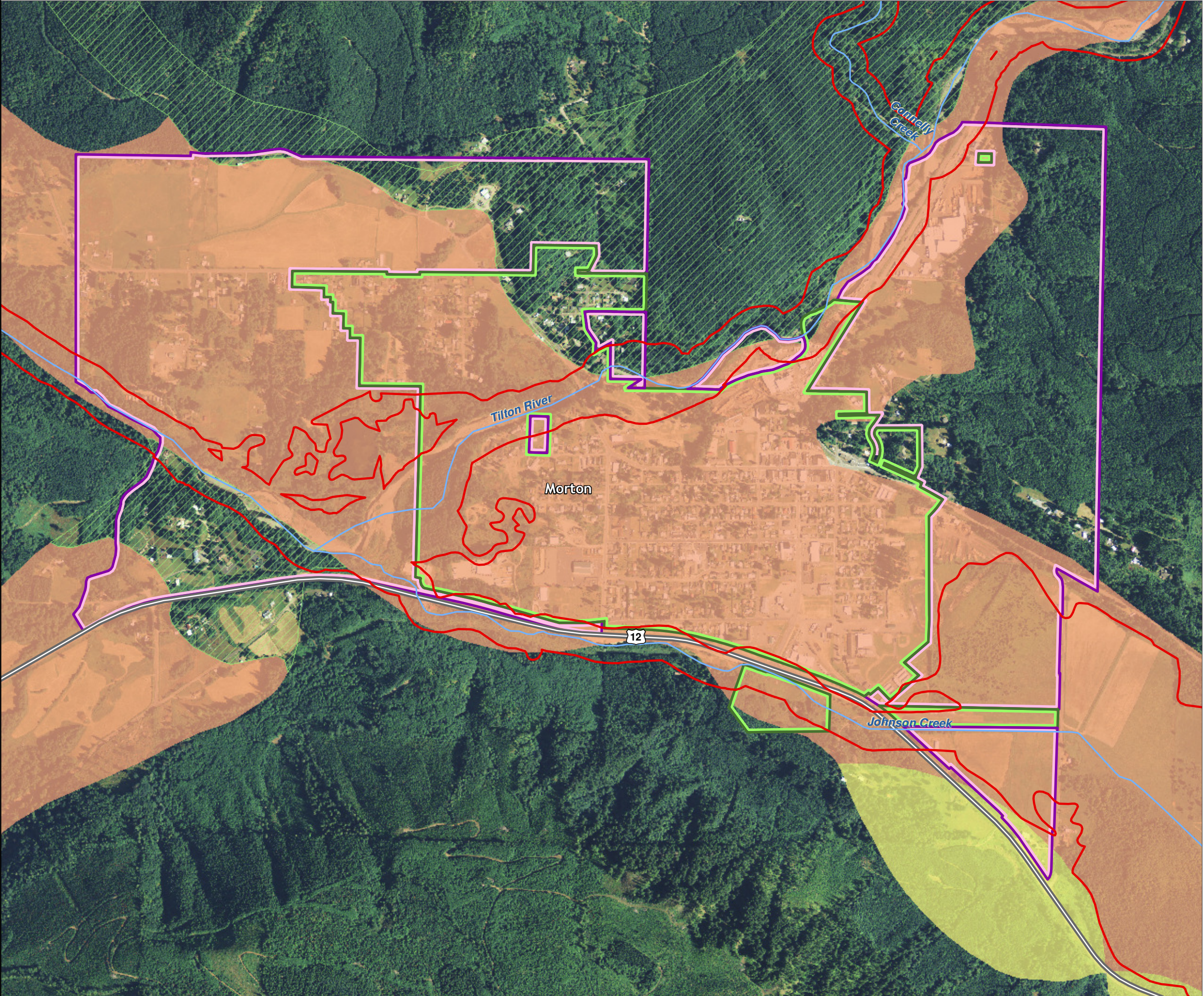


Data: Lewis County, USFWS NWI, FEMA, WA DNR, WSDOT, NRCS NAIP
Shoreline jurisdiction boundaries depicted on this map are approximate. They have not been formally delineated or surveyed and are intended for planning purposes only. Additional site-specific evaluation may be needed to confirm/verify information shown on this map.

Lewis County Coalition



City of Morton City of Winlock



Map 12C - Liquefaction Hazard
Figure: Winlock

Date: 6/3/2014

Liquefaction Hazard

- High
- Moderate to High
- Low to Moderate
- Very Low to Low
- N/A (bedrock, peat, ice or water)

SMA Rivers & Streams

SMA Lakes

Highways

SMA Jurisdiction

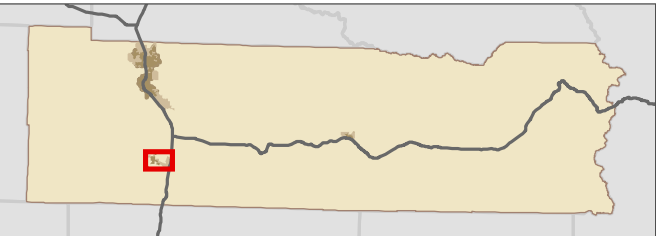
City

UGA

0 0.125 0.25 Miles
1:21,000



Area of interest in red



Data: Lewis County, USFWS NWI, FEMA, WA DNR, WSDOT, NRCS NAIP
Shoreline jurisdiction boundaries depicted on this map are approximate. They have not been formally delineated or surveyed and are intended for planning purposes only. Additional site-specific evaluation may be needed to confirm/verify information shown on this map.

Lewis County Coalition



City of Morton City of Winlock

