



# Chehalis Basin Strategy

Challenges and Opportunities

# The Chehalis Basin



# A fertile region...



...With extreme flooding



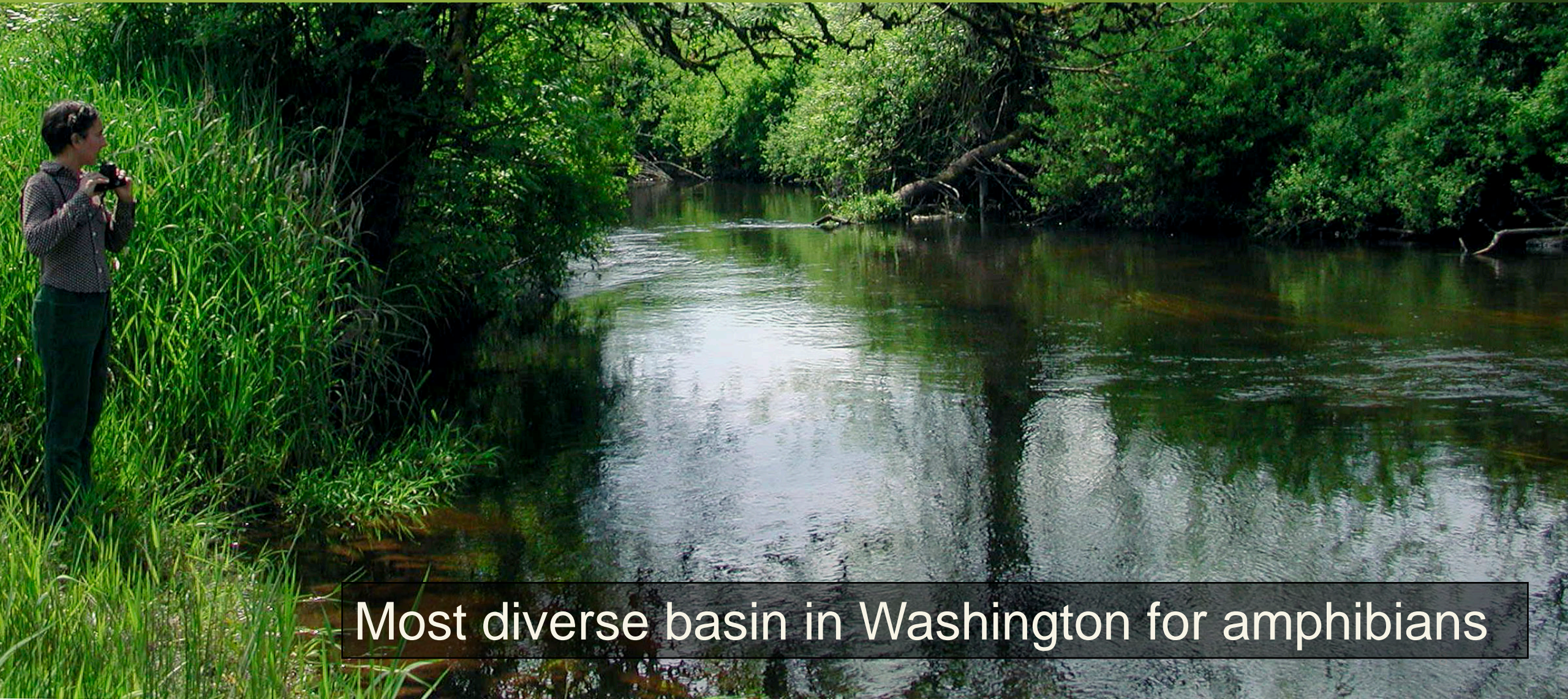




# An abundant river basin



# An abundant river basin



Most diverse basin in Washington for amphibians

# Aquatic species are struggling

- Salmon populations are 15-25% of historic levels
- Spring-run Chinook population could be extinct by end of century

# A strategy is in the works....



# Chehalis Basin Strategy

# What's happening now?

Currently \$23 million  
in state funding for  
local projects,

Just a first set of  
actions,

The aim is to work on  
a basin-wide scale.



# Evaluating options

- Programmatic Environmental Impact Statement (EIS)
- Evaluates potential effects – positive and negative

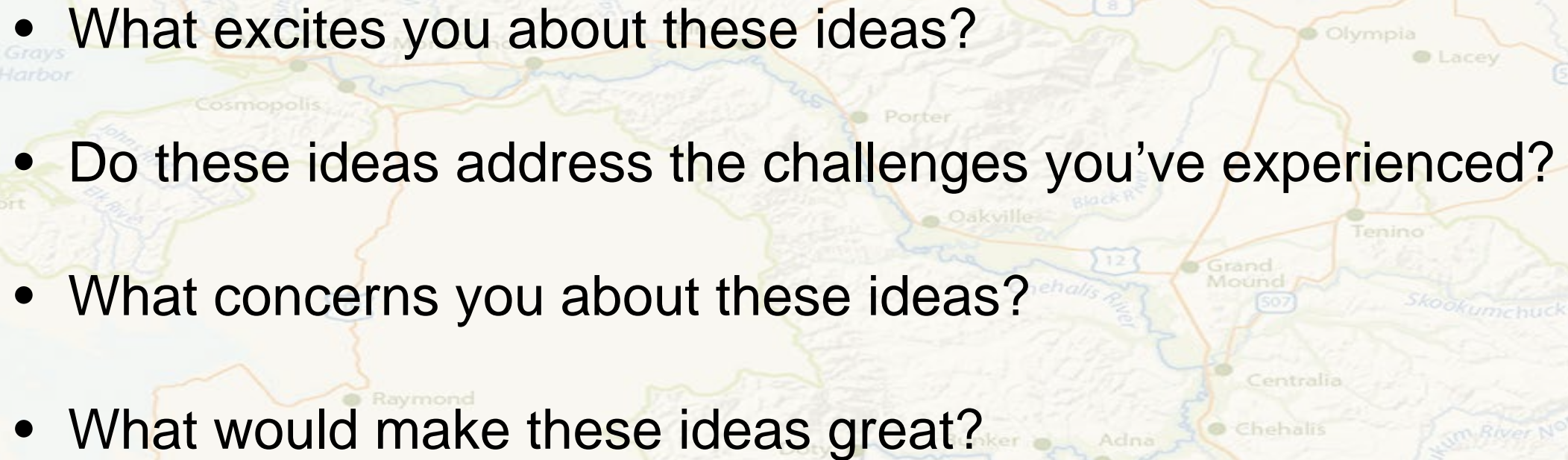


## Chehalis Basin Strategy

# It's a big, comprehensive strategy



# Think about...

- 
- A map of the Chehalis River Basin in Washington state. The map shows the Chehalis River and its tributaries, including the Skookumchuck River, Newaukum River North Fork, and Newaukum River South Fork. Towns such as Olympia, Lacey, Tenino, Grand Mound, Centralia, Chehalis, Adna, and Pe Ell are marked. The map also shows major roads like Highway 8, Highway 12, and Highway 507. The background of the slide features a green and blue gradient.
- What excites you about these ideas?
  - Do these ideas address the challenges you've experienced?
  - What concerns you about these ideas?
  - What would make these ideas great?

## Chehalis Basin Strategy

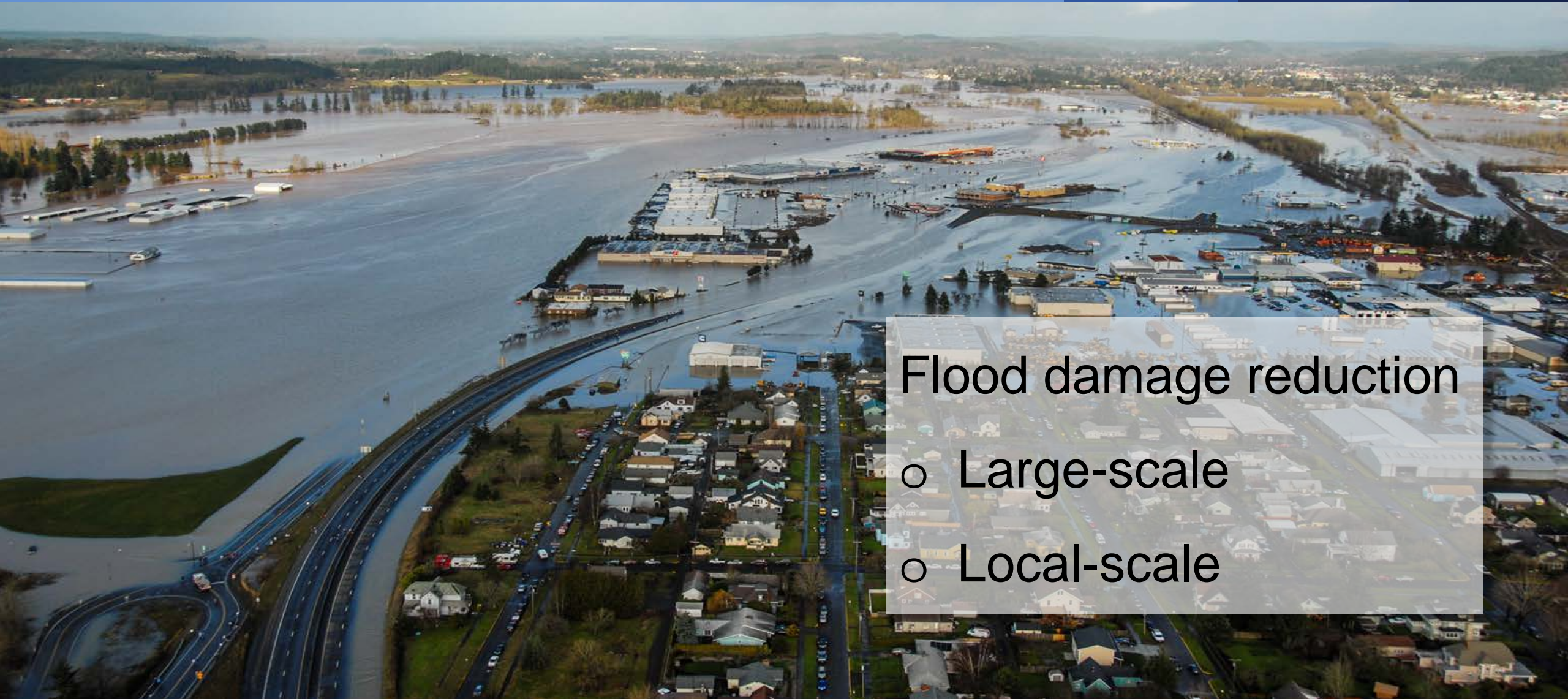
# Actions being considered

Habitat restoration

Flood damage reduction



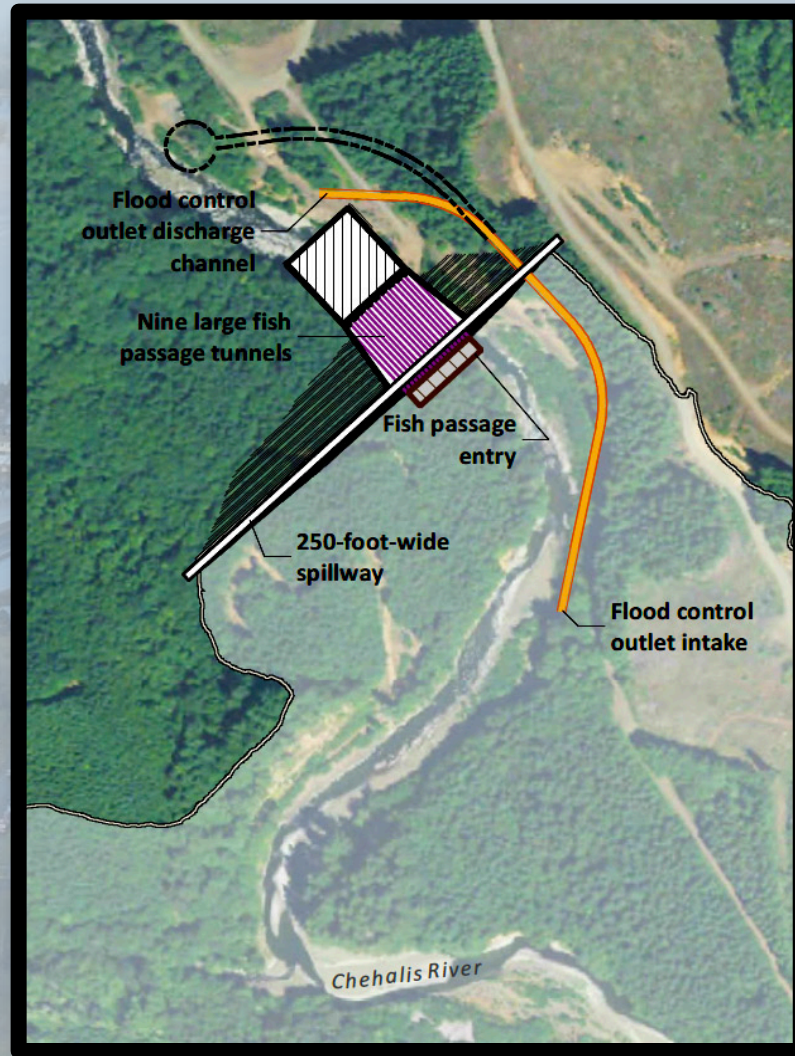
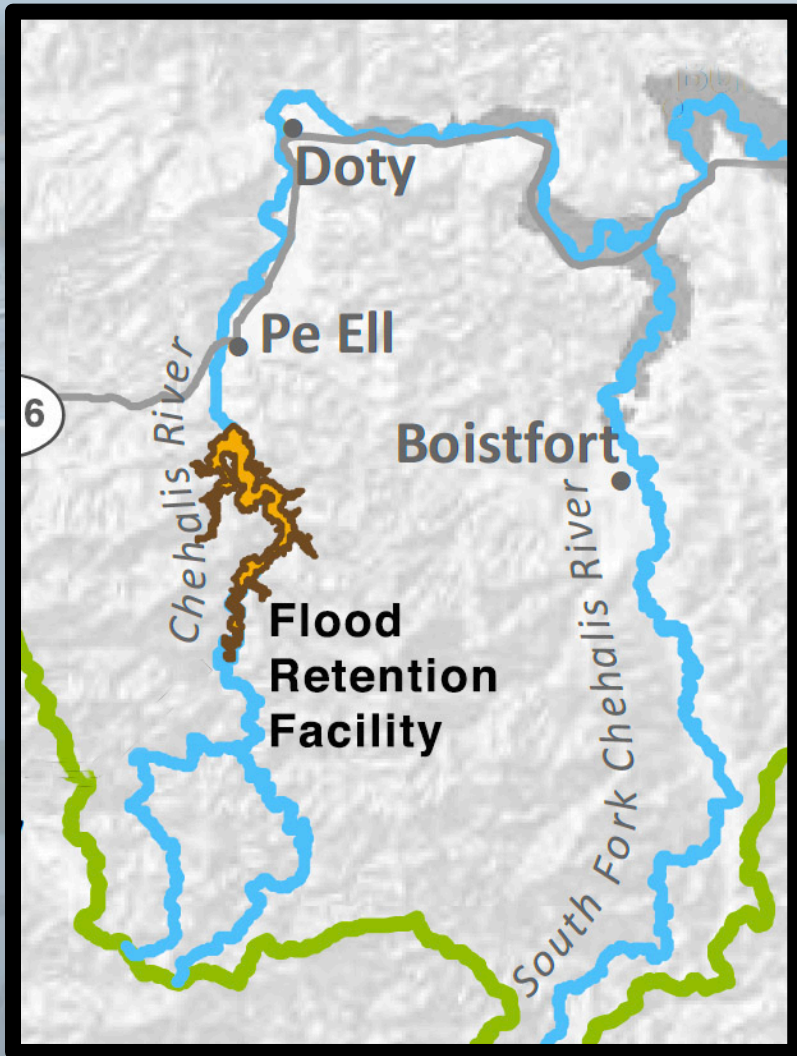
# Flood damage reduction



Flood damage reduction


- Large-scale
- Local-scale

# Large scale actions



Flood  
Retention  
Facility,  
(Dam)

# Large scale actions

- 
- I-5 projects
  - Levees

# Large scale actions



Restorative flood protection

# Local actions



Farm Pads



Raising structures,  
building walls

# Local scale actions

- Land use management
- Improved early warning system

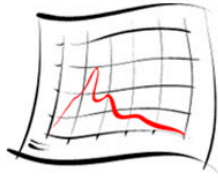
## Chehalis River Basin Flood Warning System



Weather Forecast



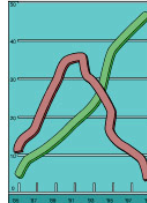
Rainfall Forecast



River Forecast



Flood Maps



Gage Data Graphs



Gage Data Maps



Chehalis Flood Authority



Road Conditions



USGS Gages



Question?

# Aquatic Species Restoration



Basin wide scale: Over 100 miles of restoration

# Local restoration actions



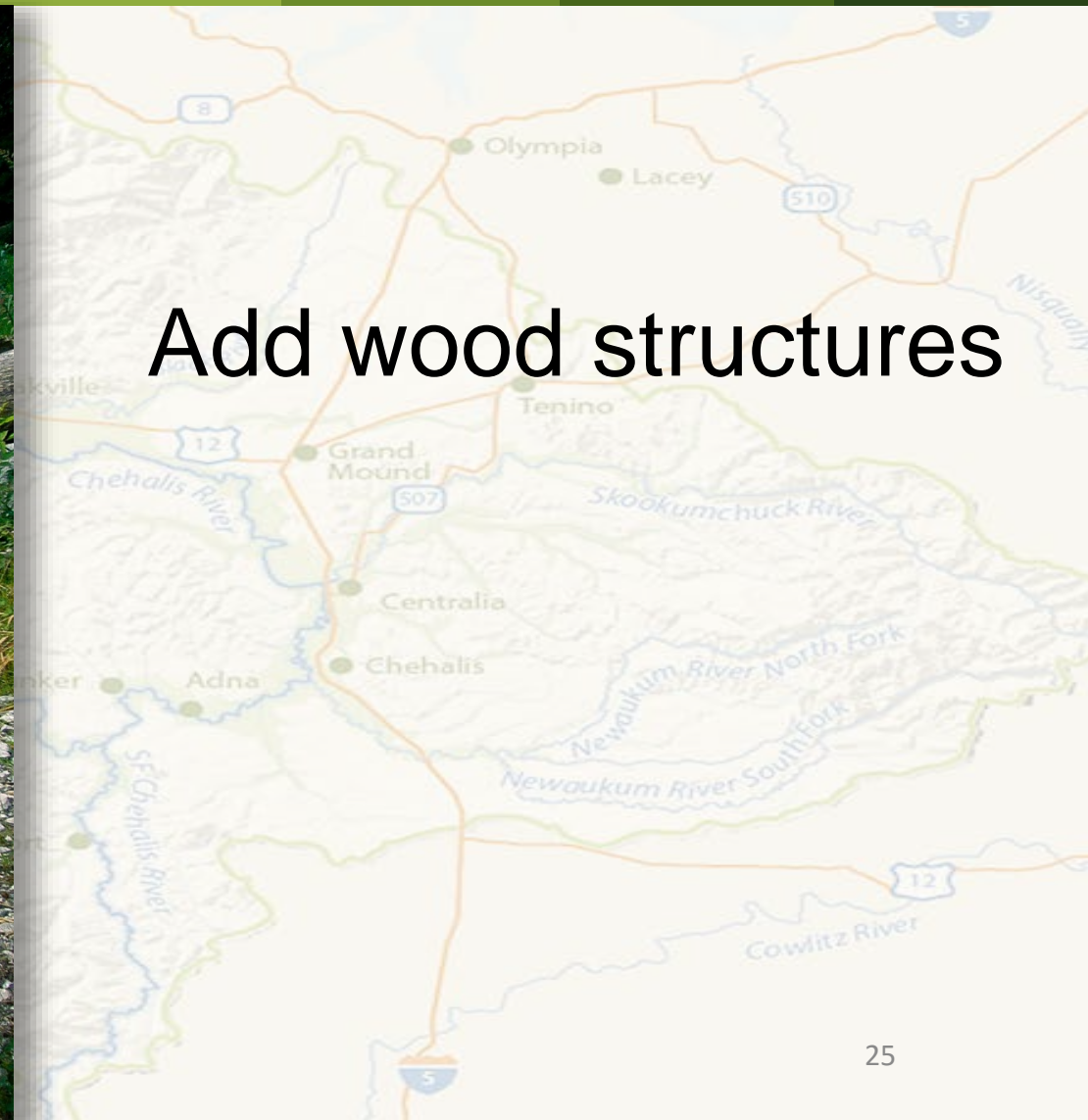
Restore habitat

# Local restoration actions

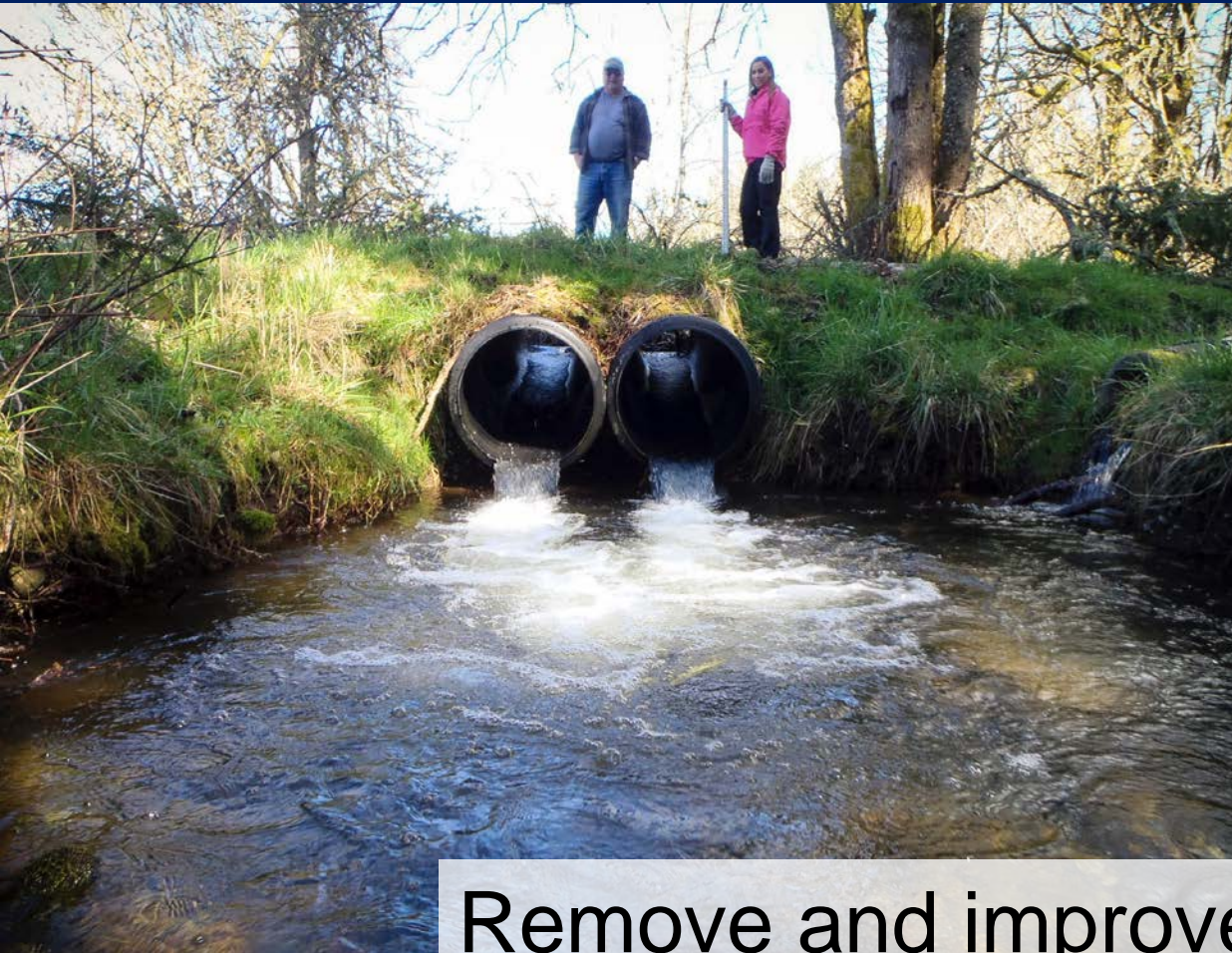


Bank restoration and reduce bank erosion

# Local restoration actions



# Local restoration actions



Remove and improve fish passage barriers

# Local restoration actions

Reconnect the  
floodplain



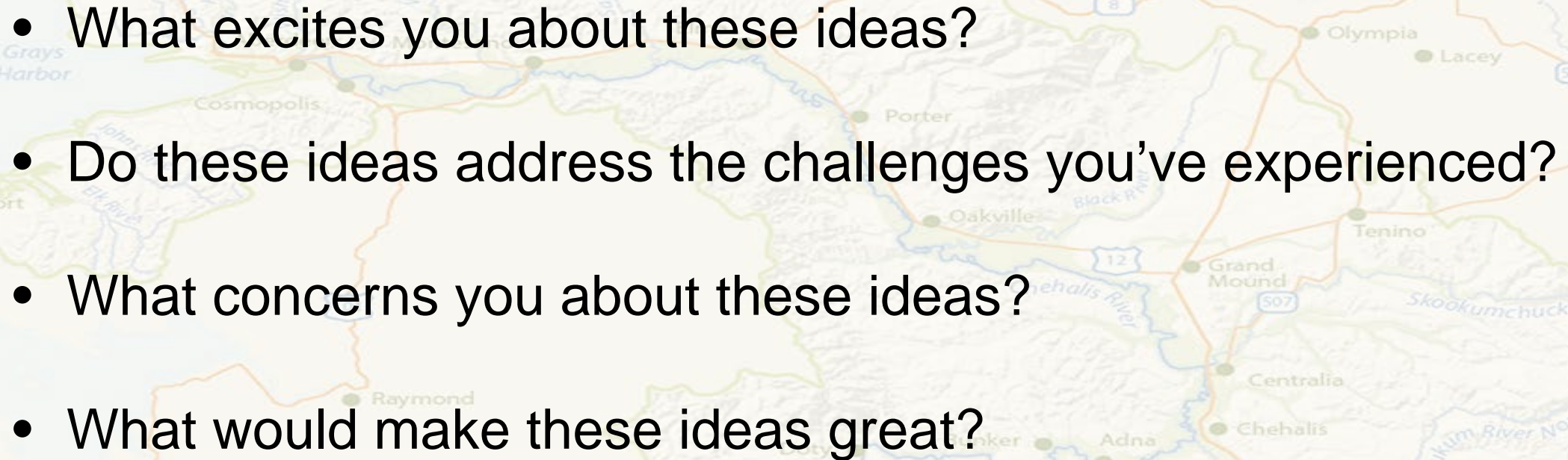
# No action?



# What's coming up?

- Draft EIS released in the fall
- Governor Inslee and legislature will recommend what actions move forward at the end of the year
- Final EIS and decision released in spring 2017
- Outreach and conversations throughout

# What could this mean for you?

- 
- A map of the Chehalis River Basin in Washington state. The map shows the Chehalis River and its tributaries, including the Skookumchuck River, Newaukum River North Fork, and Newaukum River South Fork. Other rivers shown are the Cowlitz, Nisqually, and Grays Harbor. Towns and cities labeled include Ocean Shores, Westport, Cosmopolis, Raymond, Pe Ell, Adna, Chehalis, Centralia, Grand Mound, Tenino, Lacey, Olympia, Porter, Oakville, and McCleary. Highways 8, 12, 507, and 510 are also marked.
- What excites you about these ideas?
  - Do these ideas address the challenges you've experienced?
  - What concerns you about these ideas?
  - What would make these ideas great?

## Chehalis Basin Strategy

# Actions being considered

## Flood damage reduction

- **Large-scale**

- Flood retention facility
- Levees
- I-5 projects
- Restorative flood protection

- **Local-scale**

- Flood proofing (raising structures, building walls) and buyout
- Farm pads
- Land use management
- Improved early warning earning system

## Local restoration

- Restore habitat
- Remove and improve fish passage barriers
- Add wood structures
- Reduce bank erosion
- Reconnect the floodplain



# Thank you!



[info@chehalisbasinstrategy.com](mailto:info@chehalisbasinstrategy.com)  
[www.chehalisbasinstrategy.com](http://www.chehalisbasinstrategy.com)