

NOTES:
 1. Terrain from Lewis 2006 LiDAR from DNR.
 2. 1-foot contours derived from LiDAR DEM.
 3. Aerial photo from July 31st, 2017.
 4. River miles are from the USGS 7.5' Quads



\\WALLYTerraClient Files\C-D\ChehalisBasin\ASRP_180211\GIS\MXD

DRAFT



Projection: NAD 1983
 State Plane Washington South FIPS 4602






River Survey - Full Reach

Early Action Reach RM: 13.5 to 16.5
 Middle South Fork Chehalis River, WA
 Chehalis Basin ASRP Design

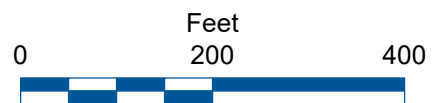
NOTES:
 1. Terrain from 2017 LiDAR from Quantum Spatial.
 2. 1-foot contours derived from LiDAR DEM.
 3. Aerial image from July 31, 2017.
 4. River miles are from the USGS 7.5' Quads
 5. Relative elevation derived from Quantum Spatial 2017 LiDAR by Inter-Fluve.



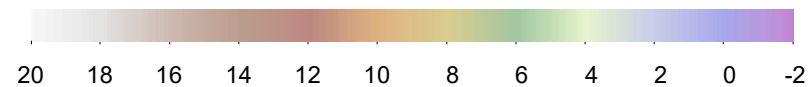
DRAFT



Projection: NAD 1983
 State Plane Washington South FIPS 4602



Relative Elevation (feet)

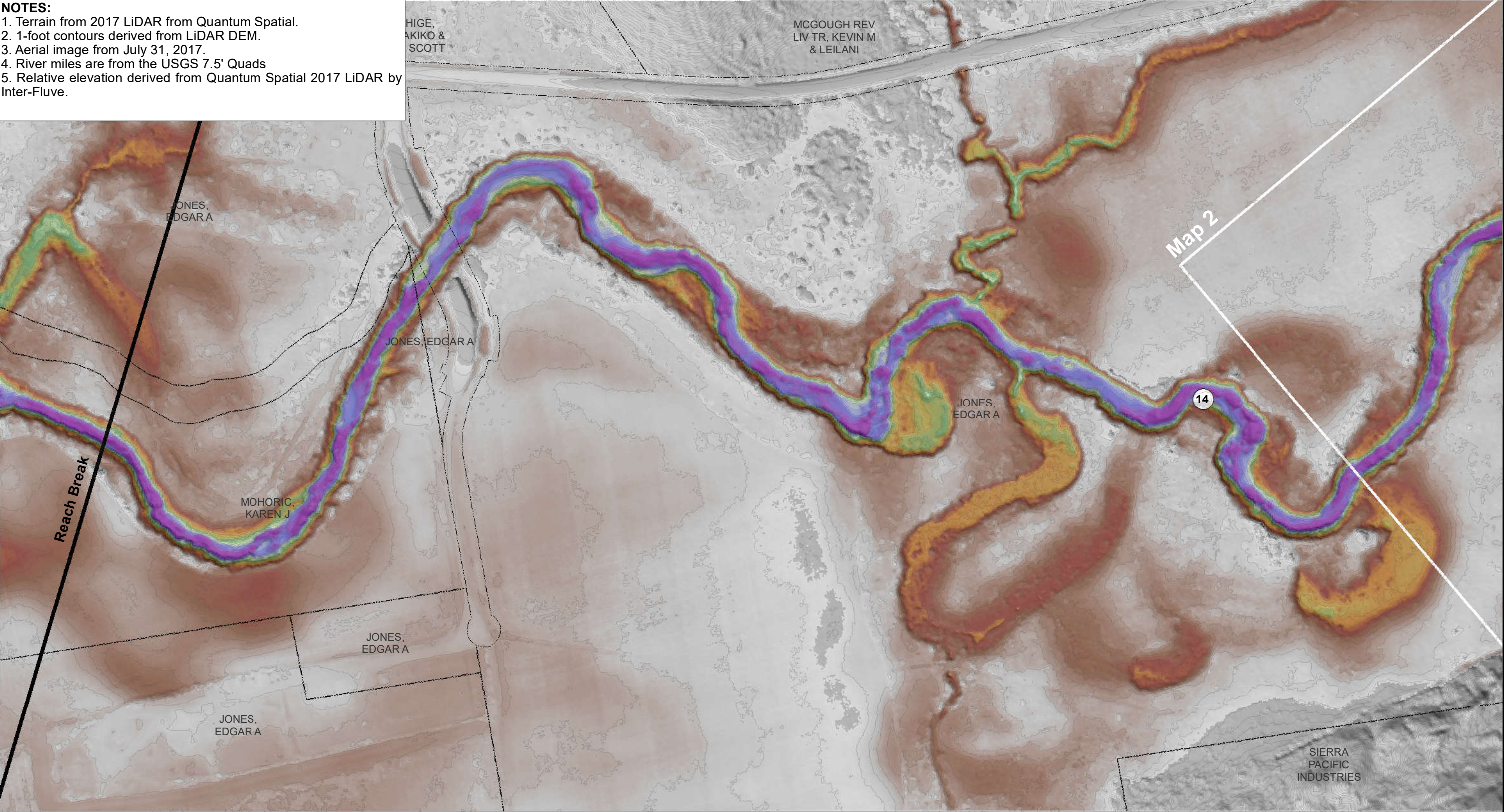


- Map Matchlines
- Parcels
- River Miles


River Survey - Map 1 of 5

Early Action Reach RM: 13.5 to 16.5
 Middle South Fork Chehalis River, WA
 Chehalis Basin ASRP Design


- NOTES:**
- 1. Terrain from 2017 LiDAR from Quantum Spatial.
 - 2. 1-foot contours derived from LiDAR DEM.
 - 3. Aerial image from July 31, 2017.
 - 4. River miles are from the USGS 7.5' Quads
 - 5. Relative elevation derived from Quantum Spatial 2017 LiDAR by Inter-Fluve.



DRAFT




Projection: NAD 1983
State Plane Washington South FIPS 4602



Feet
0 200 400

Relative Elevation (feet)



20 18 16 14 12 10 8 6 4 2 0 -2

Map Matchlines
Parcels
River Miles

River Survey - Map 1 of 5

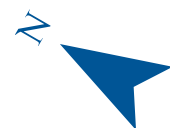
Early Action Reach RM: 13.5 to 16.5
Middle South Fork Chehalis River, WA
Chehalis Basin ASRP Design

<p>NOTES:</p> <ol style="list-style-type: none"> 1. Terrain from 2017 LiDAR from Quantum Spatial. 2. 1-foot contours derived from LiDAR DEM. 3. Aerial image from July 31, 2017. 4. River miles are from the USGS 7.5' Quads 5. Relative elevation derived from Quantum Spatial 2017 LiDAR by Inter-Fluve.
--

- | |
|--|
| <p>NOTES:</p> <ol style="list-style-type: none"> 1. Terrain from 2017 LiDAR from Quantum Spatial. 2. 1-foot contours derived from LiDAR DEM. 3. Aerial image from July 31, 2017. 4. River miles are from the USGS 7.5' Quads 5. Relative elevation derived from Quantum Spatial 2017 LiDAR by Inter-Fluve. |
|--|



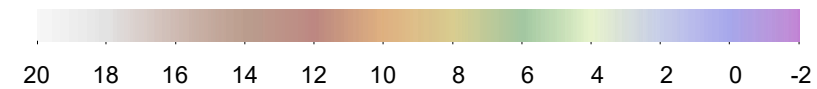
DRAFT






Projection: NAD 1983
State Plane Washington South FIPS 4602



Relative Elevation (feet)

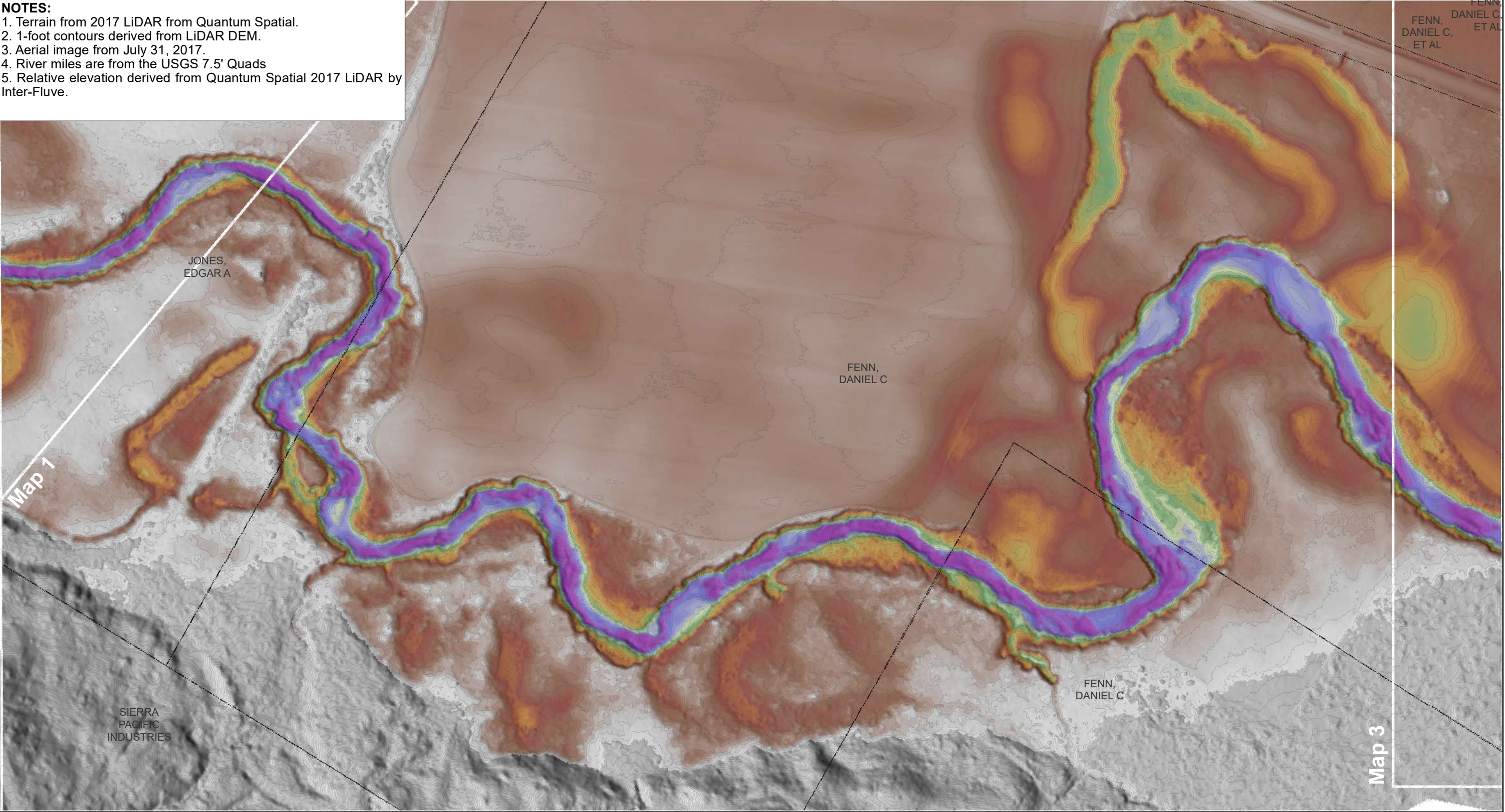


-  Map Matchlines
-  Parcels
-  River Miles


River Survey - Map 2 of 5

Early Action Reach RM: 13.5 to 16.5
Middle South Fork Chehalis River, WA
Chehalis Basin ASRP Design


- NOTES:**
- 1. Terrain from 2017 LiDAR from Quantum Spatial.
 - 2. 1-foot contours derived from LiDAR DEM.
 - 3. Aerial image from July 31, 2017.
 - 4. River miles are from the USGS 7.5' Quads
 - 5. Relative elevation derived from Quantum Spatial 2017 LiDAR by Inter-Fluve.



DRAFT

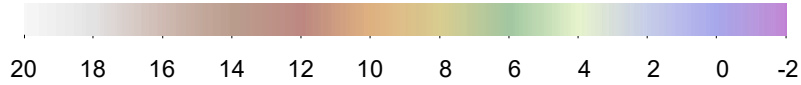


Projection: NAD 1983
State Plane Washington South FIPS 4602



0 200 400
Feet

Relative Elevation (feet)



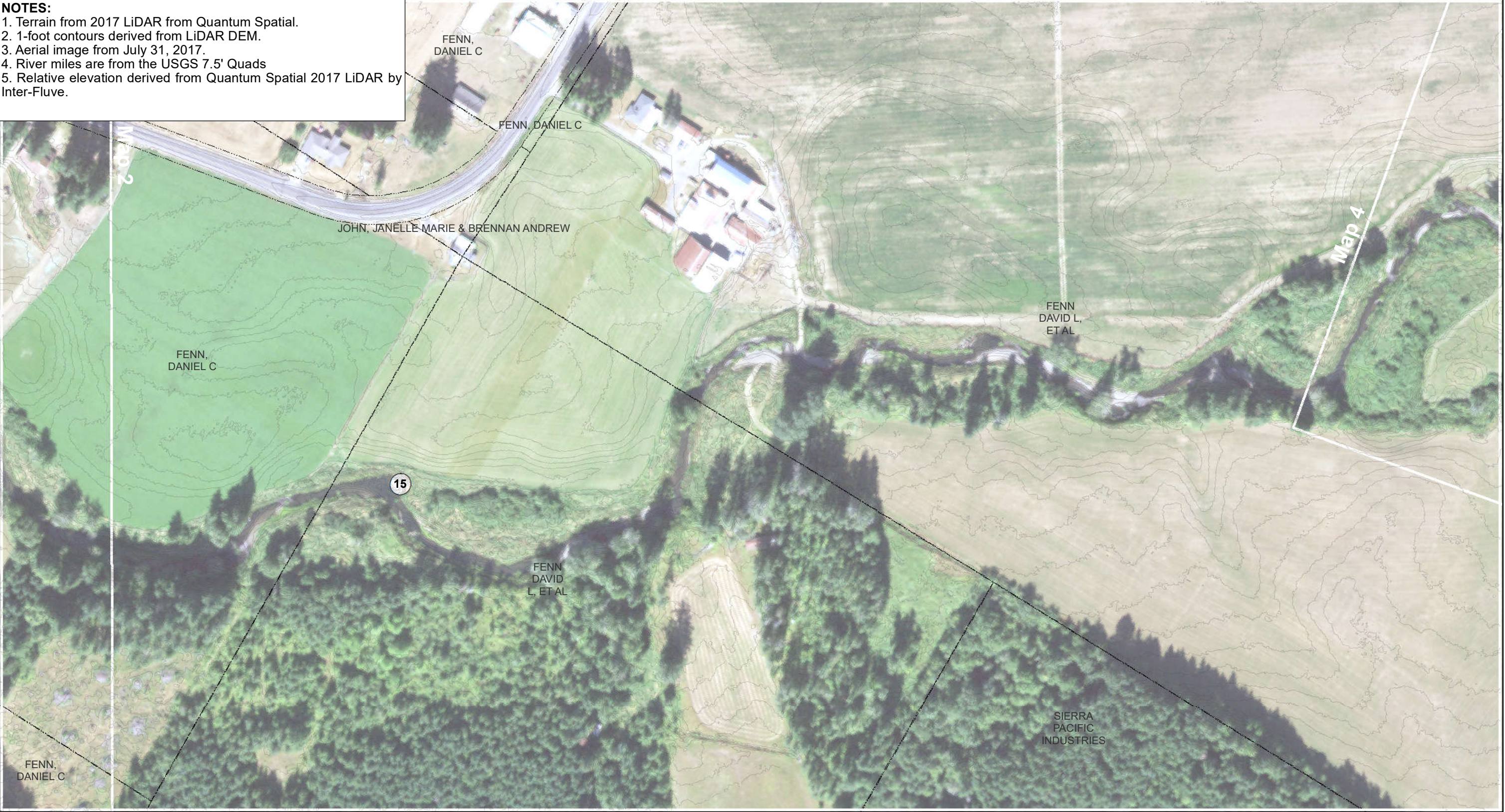
20 18 16 14 12 10 8 6 4 2 0 -2

Map Matchlines
Parcels
④ River Miles

River Survey - Map 2 of 5

Early Action Reach RM: 13.5 to 16.5
Middle South Fork Chehalis River, WA
Chehalis Basin ASRP Design

- NOTES:**
- 1. Terrain from 2017 LiDAR from Quantum Spatial.
 - 2. 1-foot contours derived from LiDAR DEM.
 - 3. Aerial image from July 31, 2017.
 - 4. River miles are from the USGS 7.5' Quads
 - 5. Relative elevation derived from Quantum Spatial 2017 LiDAR by Inter-Fluve.



\\WALLYTerraClient Files\C-D\ChehalisBasin\ASRP_180211\GIS\WMD

DRAFT

Projection: NAD 1983
State Plane Washington South FIPS 4602

Relative Elevation (feet)

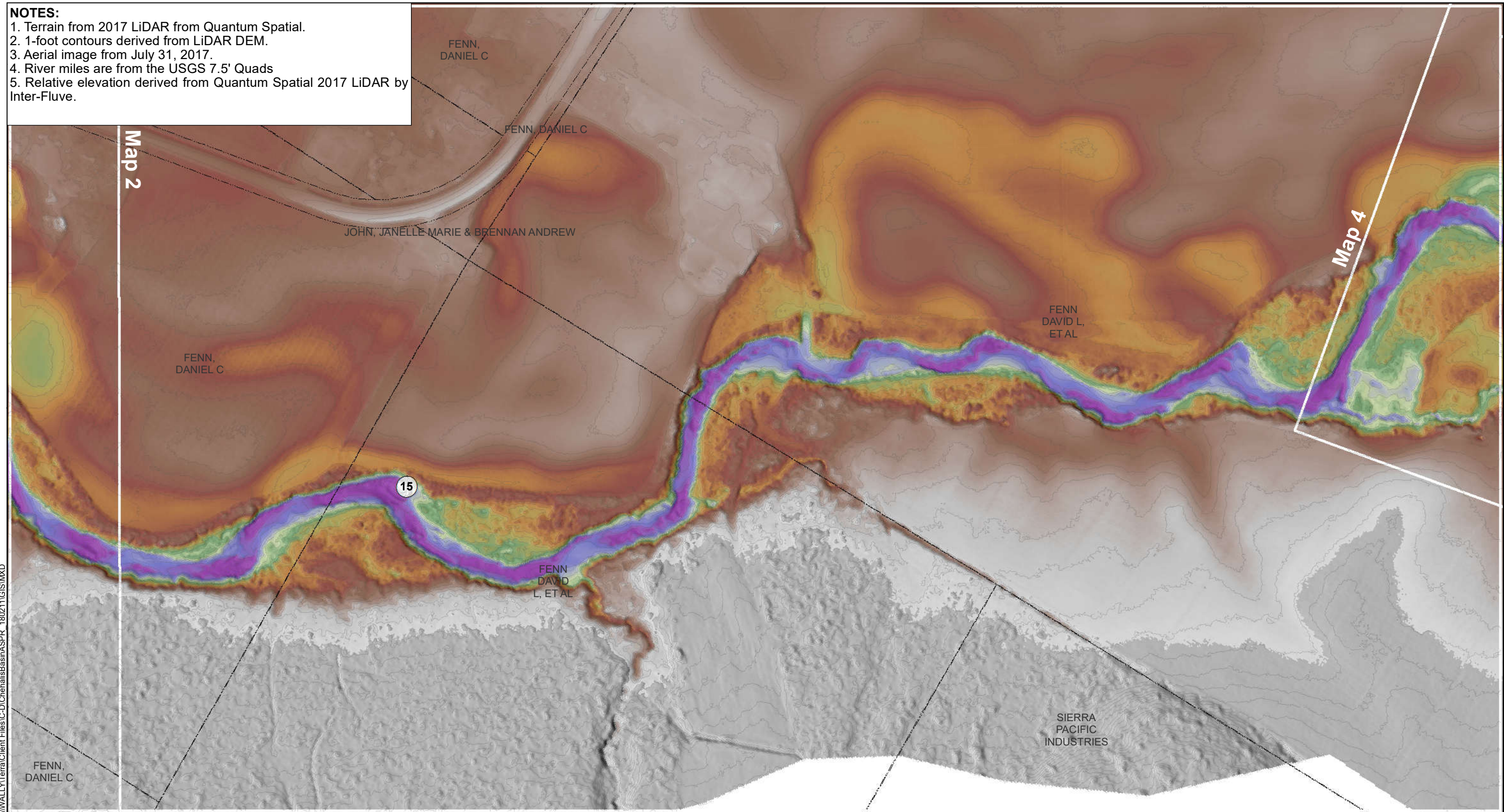
20 18 16 14 12 10 8 6 4 2 0 -2

- Map Matchlines
- Parcels
- River Miles

River Survey - Map 3 of 5

Early Action Reach RM: 13.5 to 16.5
Middle South Fork Chehalis River, WA
Chehalis Basin ASRP Design

- NOTES:**
1. Terrain from 2017 LiDAR from Quantum Spatial.
 2. 1-foot contours derived from LiDAR DEM.
 3. Aerial image from July 31, 2017.
 4. River miles are from the USGS 7.5' Quads
 5. Relative elevation derived from Quantum Spatial 2017 LiDAR by Inter-Fluve.



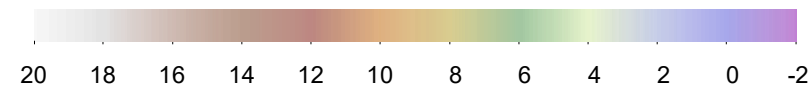
DRAFT



Projection: NAD 1983
State Plane Washington South FIPS 4602



Relative Elevation (feet)



- Map Matchlines
- Parcels
- River Miles


River Survey - Map 3 of 5

Early Action Reach RM: 13.5 to 16.5
Middle South Fork Chehalis River, WA
Chehalis Basin ASRP Design

- NOTES:**
- 1. Terrain from 2017 LiDAR from Quantum Spatial.
 - 2. 1-foot contours derived from LiDAR DEM.
 - 3. Aerial image from July 31, 2017.
 - 4. River miles are from the USGS 7.5' Quads
 - 5. Relative elevation derived from Quantum Spatial 2017 LiDAR by Inter-Fluve.




DRAFT




Projection: NAD 1983
State Plane Washington South FIPS 4602

0 200 400
Feet



Relative Elevation (feet)



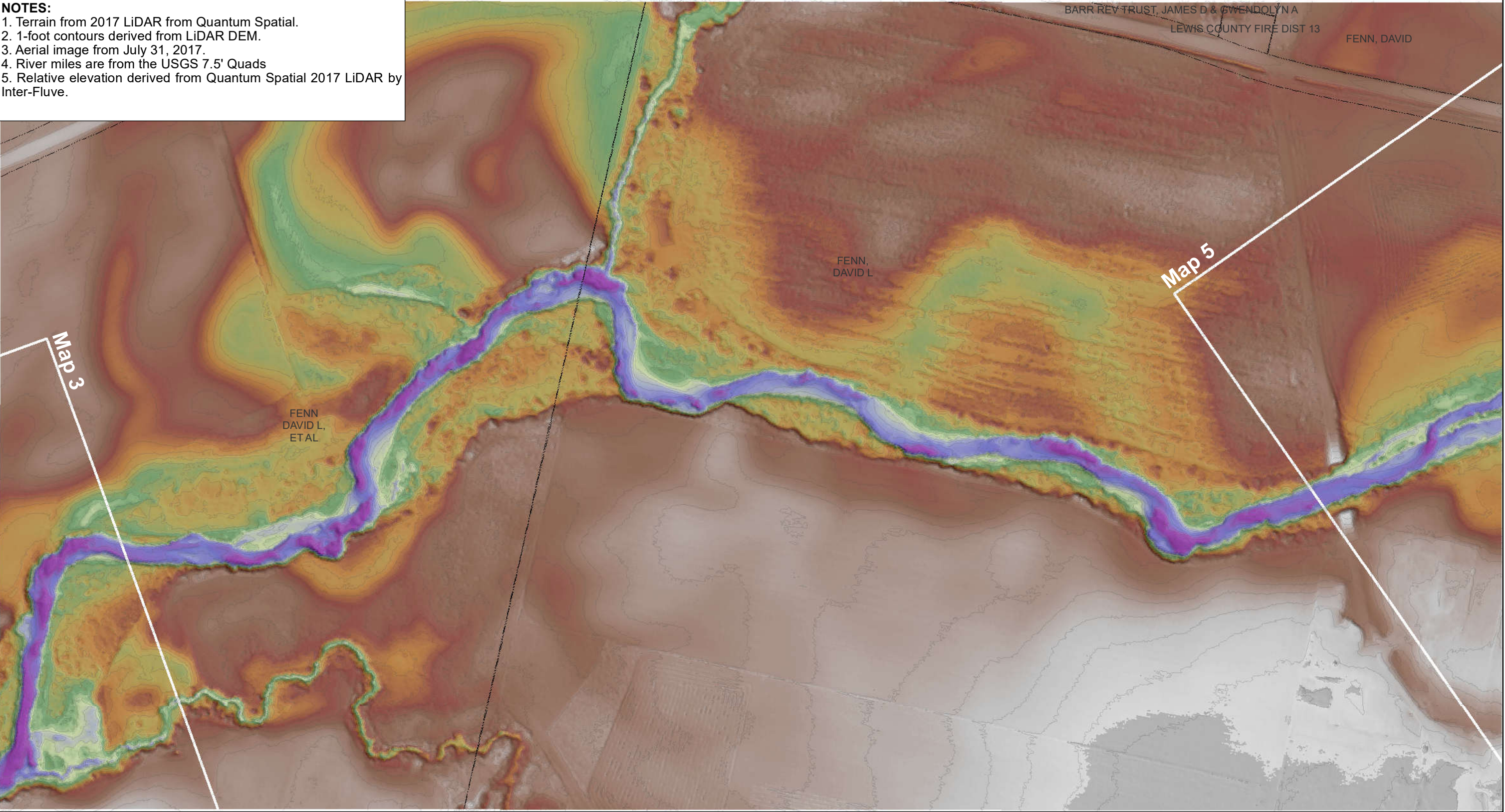
20 18 16 14 12 10 8 6 4 2 0 -2

Map Matchlines
Parcels
④ River Miles

River Survey - Map 4 of 5

Early Action Reach RM: 13.5 to 16.5
Middle South Fork Chehalis River, WA
Chehalis Basin ASRP Design


- NOTES:**
- 1. Terrain from 2017 LiDAR from Quantum Spatial.
 - 2. 1-foot contours derived from LiDAR DEM.
 - 3. Aerial image from July 31, 2017.
 - 4. River miles are from the USGS 7.5' Quads
 - 5. Relative elevation derived from Quantum Spatial 2017 LiDAR by Inter-Fluve.




- NOTES:**
- 1. Terrain from 2017 LiDAR from Quantum Spatial.
 - 2. 1-foot contours derived from LiDAR DEM.
 - 3. Aerial image from July 31, 2017.
 - 4. River miles are from the USGS 7.5' Quads
 - 5. Relative elevation derived from Quantum Spatial 2017 LiDAR by Inter-Fluve.



DRAFT

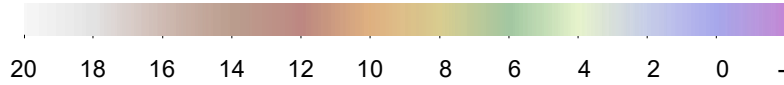


Projection: NAD 1983
State Plane Washington South FIPS 4602



0 200 400
Feet

Relative Elevation (feet)



20 18 16 14 12 10 8 6 4 2 0 -2

Map Matchlines

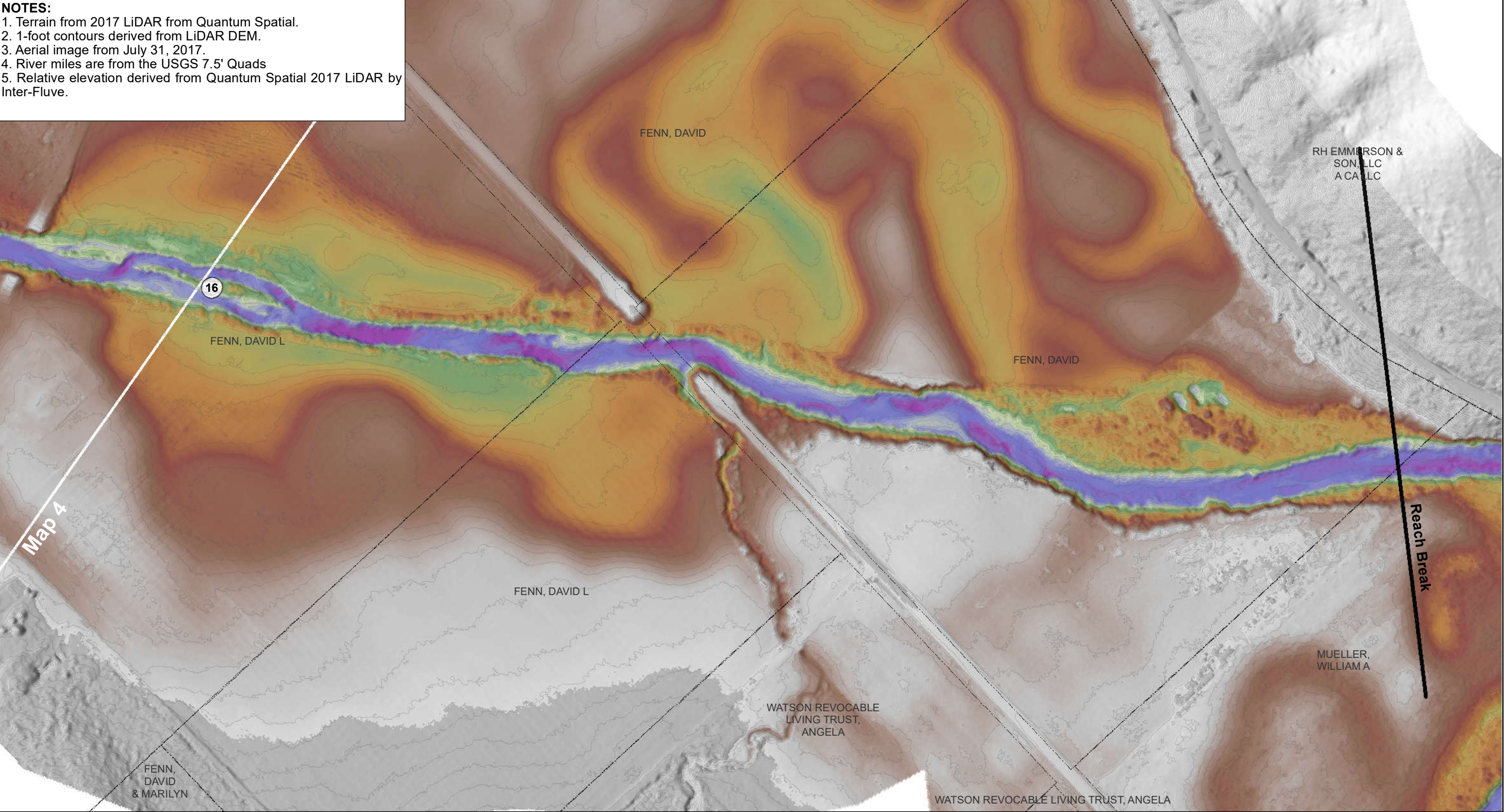
Parcels

River Miles


River Survey - Map 5 of 5

Early Action Reach RM: 13.5 to 16.5
Middle South Fork Chehalis River, WA
Chehalis Basin ASRP Design

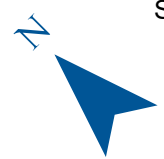
- NOTES:**
- 1. Terrain from 2017 LiDAR from Quantum Spatial.
 - 2. 1-foot contours derived from LiDAR DEM.
 - 3. Aerial image from July 31, 2017.
 - 4. River miles are from the USGS 7.5' Quads
 - 5. Relative elevation derived from Quantum Spatial 2017 LiDAR by Inter-Fluve.



DRAFT

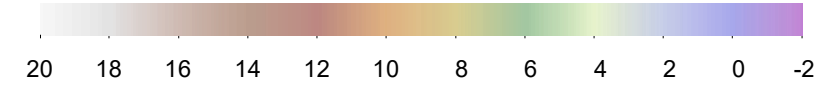


Projection: NAD 1983
State Plane Washington South FIPS 4602



0 200 400
Feet

Relative Elevation (feet)



20 18 16 14 12 10 8 6 4 2 0 -2

Map Matchlines
Parcels
④ River Miles

River Survey - Map 5 of 5

Early Action Reach RM: 13.5 to 16.5
Middle South Fork Chehalis River, WA
Chehalis Basin ASRP Design

- NOTES:**
1. Terrain from Gray's Harbor 2012 LiDAR from DNR.
 2. 1-foot contours derived from LiDAR DEM.
 3. Aerial photo from July 31st, 2017.
 4. River miles are from the USGS 7.5' Quads

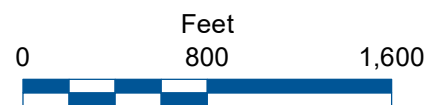


\\WALLYTerraClientFiles\CD\ChelalisBasin\ASPR_180211\GIS\MXD

DRAFT



Projection: NAD 1983
State Plane Washington South FIPS 4602



- Map Matchlines
- Parcels
- 4 River Miles

River Survey - Full Reach

Early Action Reach RM: 0 to 2.5
Stillman Creek, WA
Chehalis Basin ASRP Design

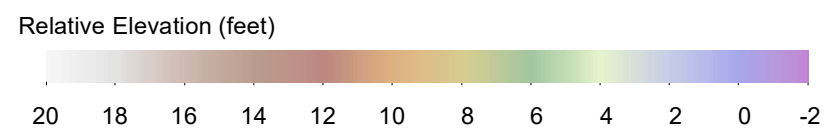
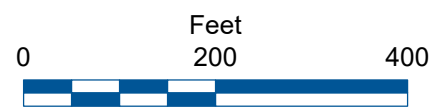
- NOTES:**
1. Terrain from 2017 LiDAR from Quantum Spatial and Gray's Harbor 2012 LiDAR from DNR.
 2. 1-foot contours derived from LiDAR DEM.
 3. Aerial image from July 31, 2017.
 4. River miles are from the USGS 7.5' Quads
 5. Relative elevation derived from Quantum Spatial 2017 and Gray's Harbor 2012 LiDAR by Inter-Fluve.



DRAFT



Projection: NAD 1983
State Plane Washington South FIPS 4602

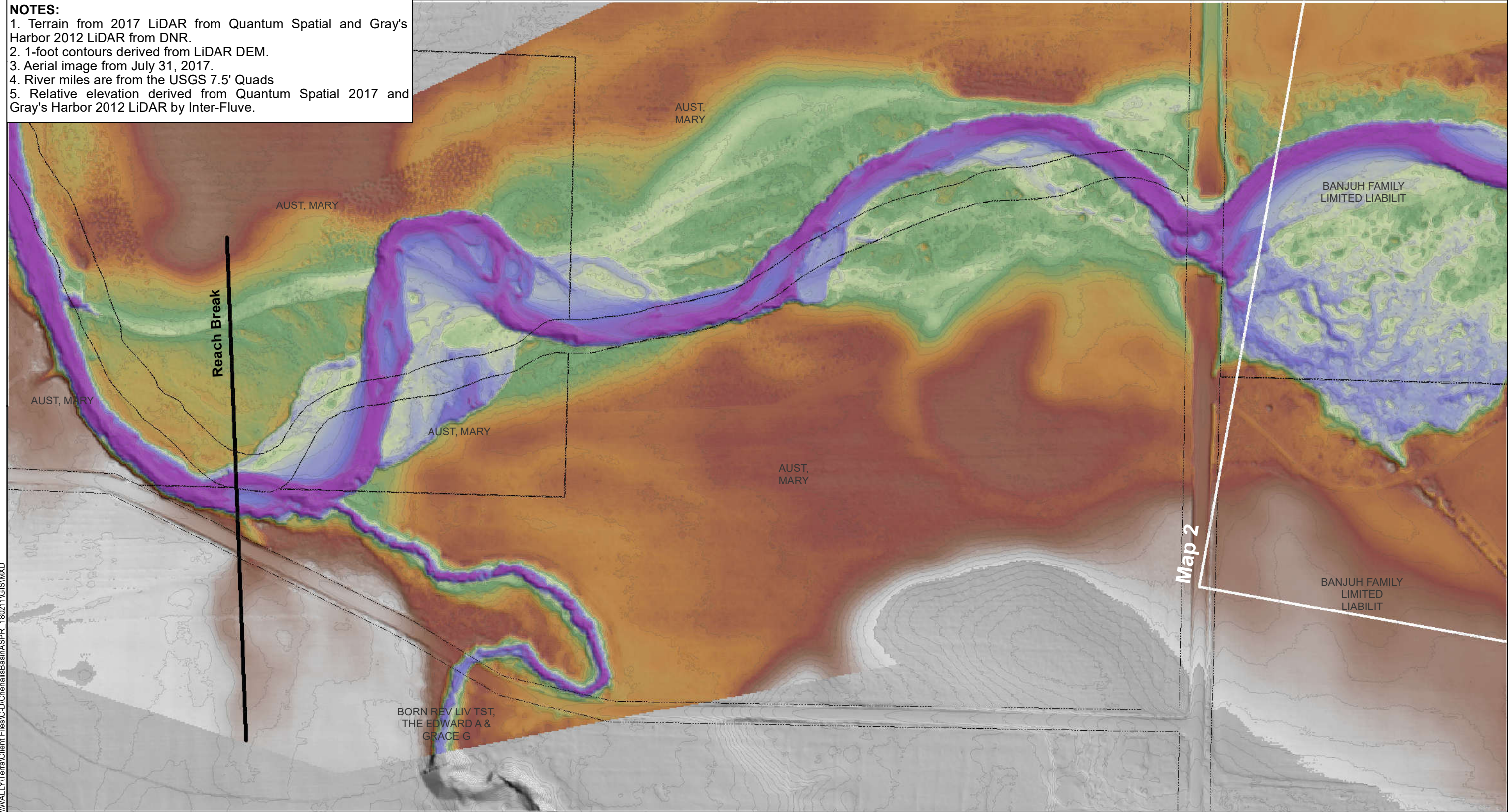


- Map Matchlines
- Parcels
- 4 River Miles

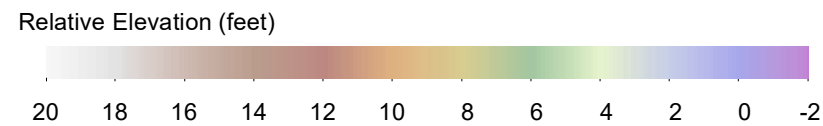
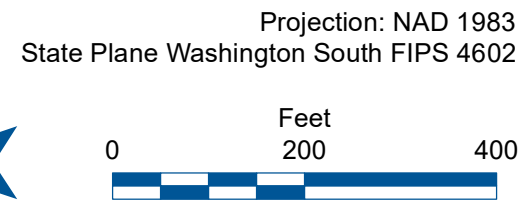
River Survey - Map 1 of 4

Early Action Reach RM: 0 to 2.5
Stillman Creek, WA
Chehalis Basin ASRP Design

- NOTES:**
1. Terrain from 2017 LiDAR from Quantum Spatial and Gray's Harbor 2012 LiDAR from DNR.
 2. 1-foot contours derived from LiDAR DEM.
 3. Aerial image from July 31, 2017.
 4. River miles are from the USGS 7.5' Quads
 5. Relative elevation derived from Quantum Spatial 2017 and Gray's Harbor 2012 LiDAR by Inter-Fluve.



DRAFT



- Map Matchlines
- Parcels
- 4 River Miles

River Survey - Map 1 of 4

Early Action Reach RM: 0 to 2.5
Stillman Creek, WA
Chehalis Basin ASRP Design

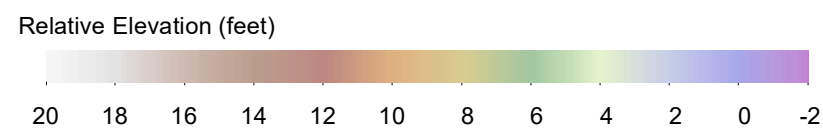
- NOTES:**
1. Terrain from 2017 LiDAR from Quantum Spatial and Gray's Harbor 2012 LiDAR from DNR.
 2. 1-foot contours derived from LiDAR DEM.
 3. Aerial image from July 31, 2017.
 4. River miles are from the USGS 7.5' Quads
 5. Relative elevation derived from Quantum Spatial 2017 and Gray's Harbor 2012 LiDAR by Inter-Fluve.



DRAFT



Projection: NAD 1983
State Plane Washington South FIPS 4602

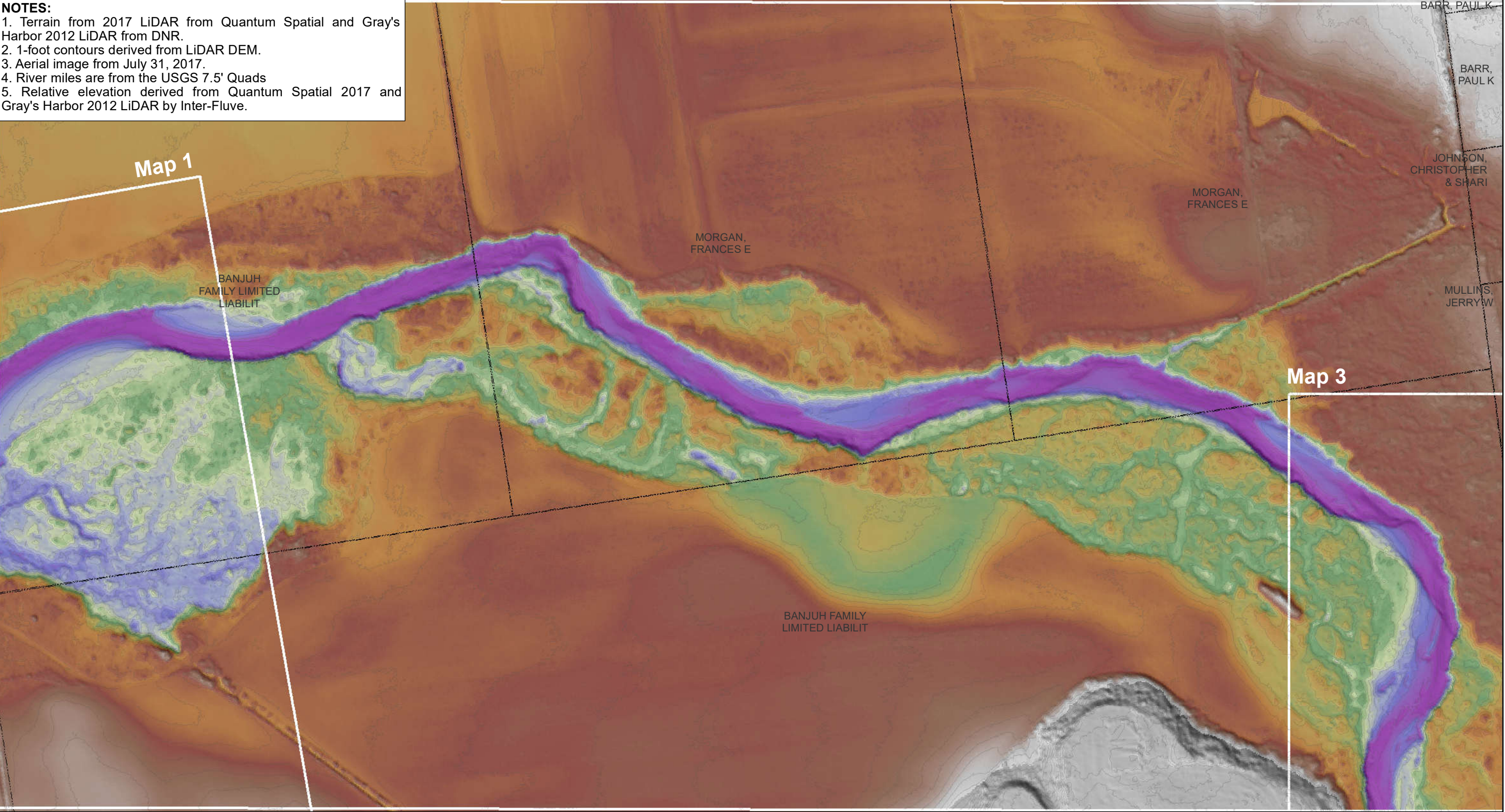


- Map Matchlines
- Parcels
- 4 River Miles

River Survey - Map 2 of 4

Early Action Reach RM: 0 to 2.5
Stillman Creek, WA
Chehalis Basin ASRP Design


- NOTES:**
1. Terrain from 2017 LiDAR from Quantum Spatial and Gray's Harbor 2012 LiDAR from DNR.
 2. 1-foot contours derived from LiDAR DEM.
 3. Aerial image from July 31, 2017.
 4. River miles are from the USGS 7.5' Quads
 5. Relative elevation derived from Quantum Spatial 2017 and Gray's Harbor 2012 LiDAR by Inter-Fluve.




NOTES:
1. Terrain from 2017 LiDAR from Quantum Spatial and Gray's Harbor 2012 LiDAR from DNR.
2. 1-foot contours derived from LiDAR DEM.
3. Aerial image from July 31, 2017.
4. River miles are from the USGS 7.5' Quads
5. Relative elevation derived from Quantum Spatial 2017 and Gray's Harbor 2012 LiDAR by Inter-Fluve.




DRAFT



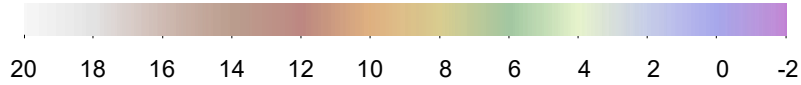
Projection: NAD 1983
State Plane Washington South FIPS 4602



0 200 400
Feet



Relative Elevation (feet)



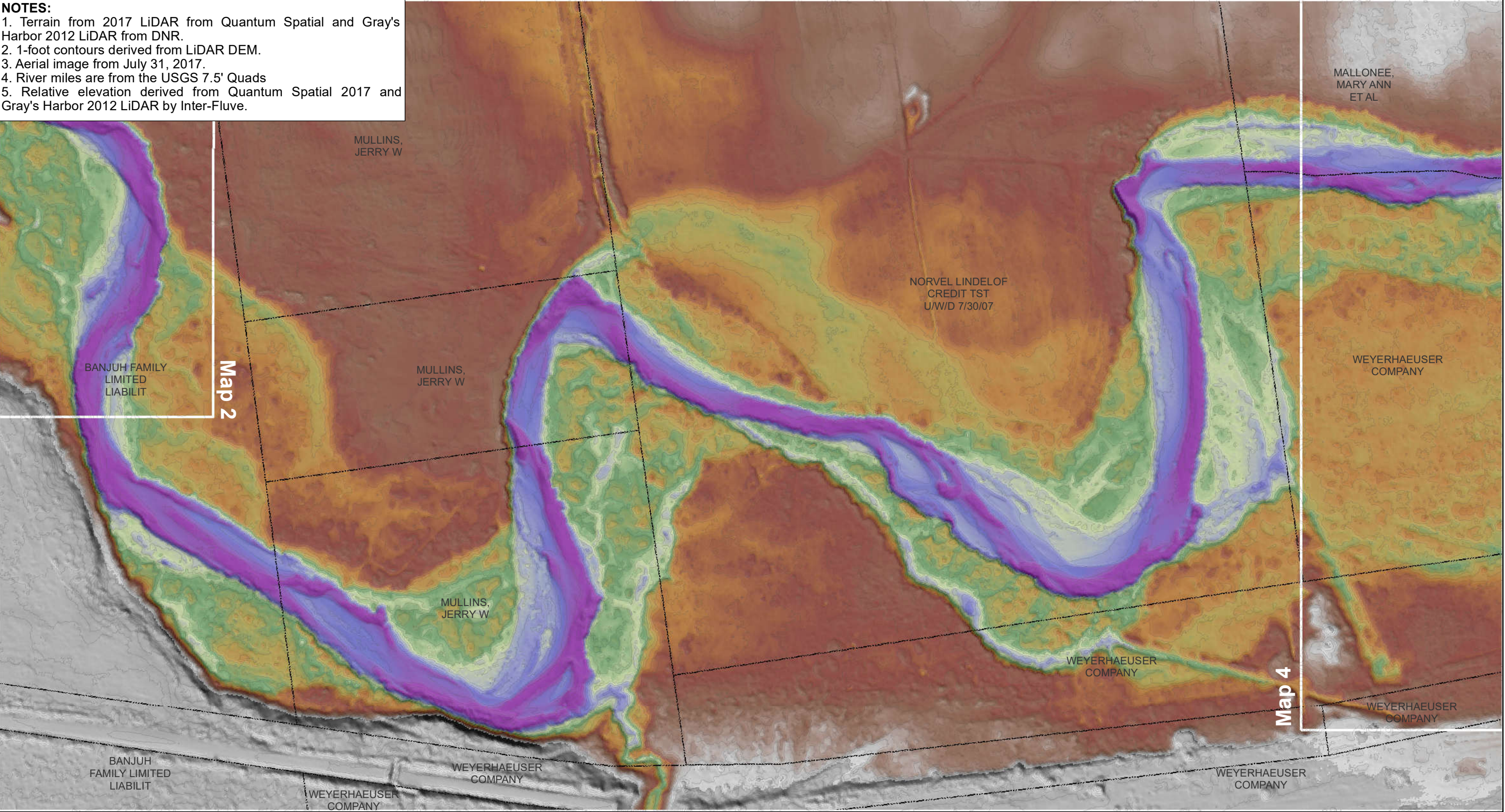
20 18 16 14 12 10 8 6 4 2 0 -2

Map Matchlines
Parcels
④ River Miles


River Survey - Map 3 of 4

Early Action Reach RM: 0 to 2.5
Stillman Creek, WA
Chehalis Basin ASRP Design


- NOTES:**
- 1. Terrain from 2017 LiDAR from Quantum Spatial and Gray's Harbor 2012 LiDAR from DNR.
 - 2. 1-foot contours derived from LiDAR DEM.
 - 3. Aerial image from July 31, 2017.
 - 4. River miles are from the USGS 7.5' Quads
 - 5. Relative elevation derived from Quantum Spatial 2017 and Gray's Harbor 2012 LiDAR by Inter-Fluve.



DRAFT




Projection: NAD 1983
State Plane Washington South FIPS 4602



Feet
0 200 400

Relative Elevation (feet)



20 18 16 14 12 10 8 6 4 2 0 -2

Map Matchlines
Parcels
④ River Miles


River Survey - Map 3 of 4

Early Action Reach RM: 0 to 2.5
Stillman Creek, WA
Chehalis Basin ASRP Design


- NOTES:**
- 1. Terrain from 2017 LiDAR from Quantum Spatial and Gray's Harbor 2012 LiDAR from DNR.
 - 2. 1-foot contours derived from LiDAR DEM.
 - 3. Aerial image from July 31, 2017.
 - 4. River miles are from the USGS 7.5' Quads
 - 5. Relative elevation derived from Quantum Spatial 2017 and Gray's Harbor 2012 LiDAR by Inter-Fluve.



DRAFT




Projection: NAD 1983
State Plane Washington South FIPS 4602



0 200 400
Feet

Relative Elevation (feet)



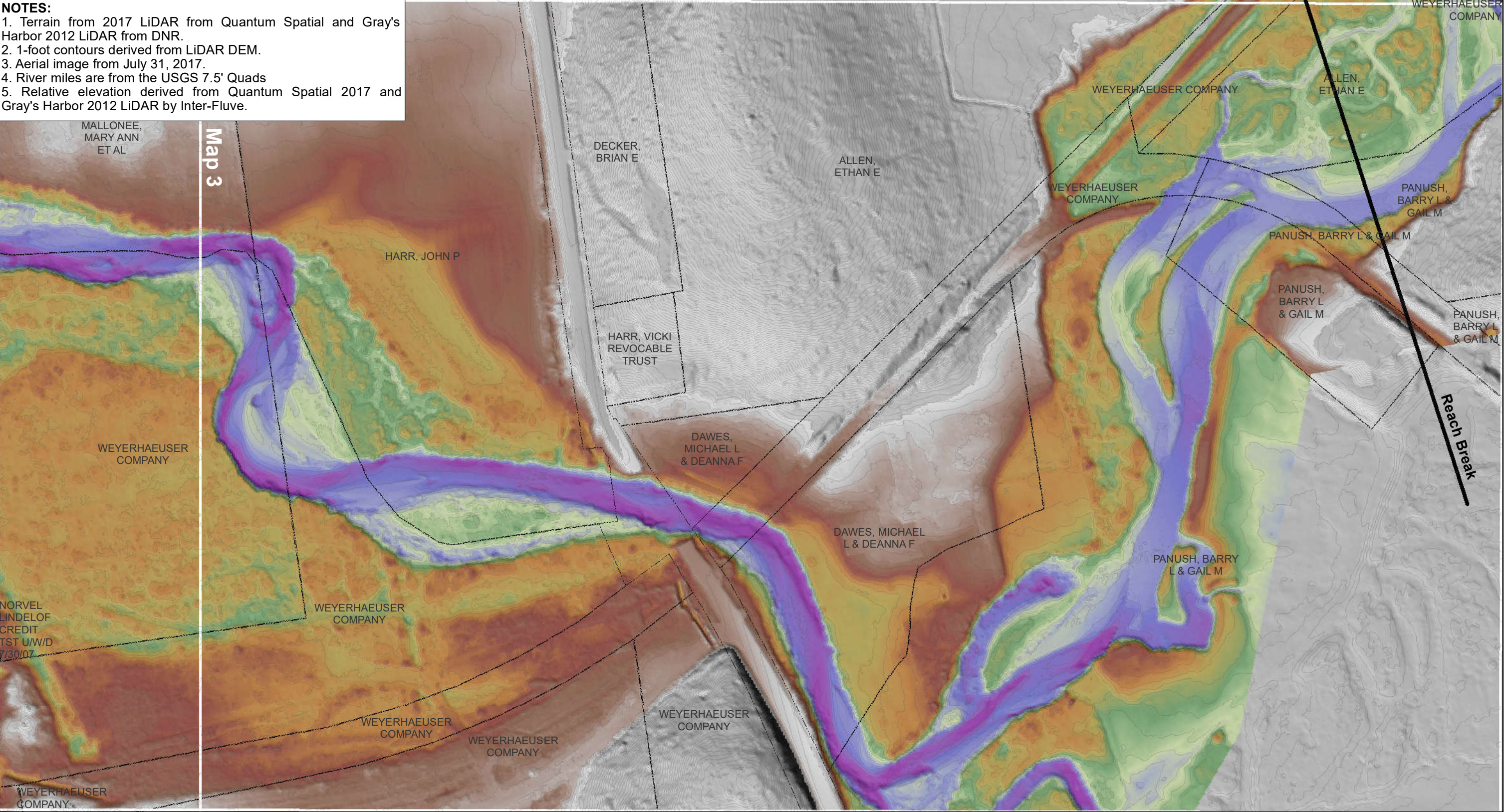
20 18 16 14 12 10 8 6 4 2 0 -2

Map Matchlines
Parcels
④ River Miles


River Survey - Map 4 of 4

Early Action Reach RM: 0 to 2.5
Stillman Creek, WA
Chehalis Basin ASRP Design


- NOTES:**
- 1. Terrain from 2017 LiDAR from Quantum Spatial and Gray's Harbor 2012 LiDAR from DNR.
 - 2. 1-foot contours derived from LiDAR DEM.
 - 3. Aerial image from July 31, 2017.
 - 4. River miles are from the USGS 7.5' Quads
 - 5. Relative elevation derived from Quantum Spatial 2017 and Gray's Harbor 2012 LiDAR by Inter-Fluve.



DRAFT

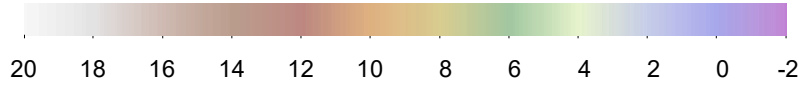


Projection: NAD 1983
State Plane Washington South FIPS 4602



0 200 400
Feet

Relative Elevation (feet)



20 18 16 14 12 10 8 6 4 2 0 -2

Map Matchlines
Parcels
④ River Miles

River Survey - Map 4 of 4

Early Action Reach RM: 0 to 2.5
Stillman Creek, WA
Chehalis Basin ASRP Design

- NOTES:**
- 1. Terrain from SWWA Foothills 2017 and Gray's Harbor 2012 LiDAR from DNR.
 - 2. 1-foot contours derived from LiDAR DEM.
 - 3. Aerial photo from July 31st, 2017.
 - 4. River miles are from the USGS 7.5' Quads

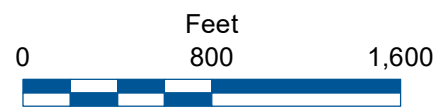


\\WALLYTerraClientFiles\C-D\Chahal\Bashin\ASPR_180211\GIS\MXD

DRAFT



Projection: NAD 1983
State Plane Washington South FIPS 4602



- Map Matchlines
- Parcels
- 4 River Miles

River Survey - Full Reach


Early Action Reach RM: 10.9 to 13.0
South Fork Newaukum River, WA
Chehalis Basin ASRP Design

NOTES:
1. Terrain from 2017 LiDAR from Quantum Spatial.
2. 1-foot contours derived from LiDAR DEM.
3. Aerial image from July 31, 2017.
4. River miles are from the USGS 7.5' Quads
5. Relative elevation derived from Quantum Spatial 2017 LiDAR by Inter-Fluve.

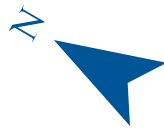


\\WALLYTerraClientFiles\CD\ChahalBasin\ASRP_180211\GIS\WMD

DRAFT

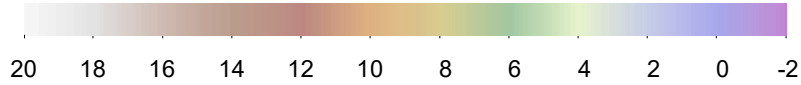


Projection: NAD 1983
State Plane Washington South FIPS 4602



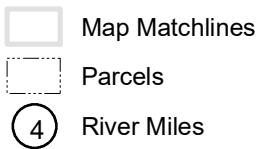
0 200 400
Feet

Relative Elevation (feet)



20 18 16 14 12 10 8 6 4 2 0 -2

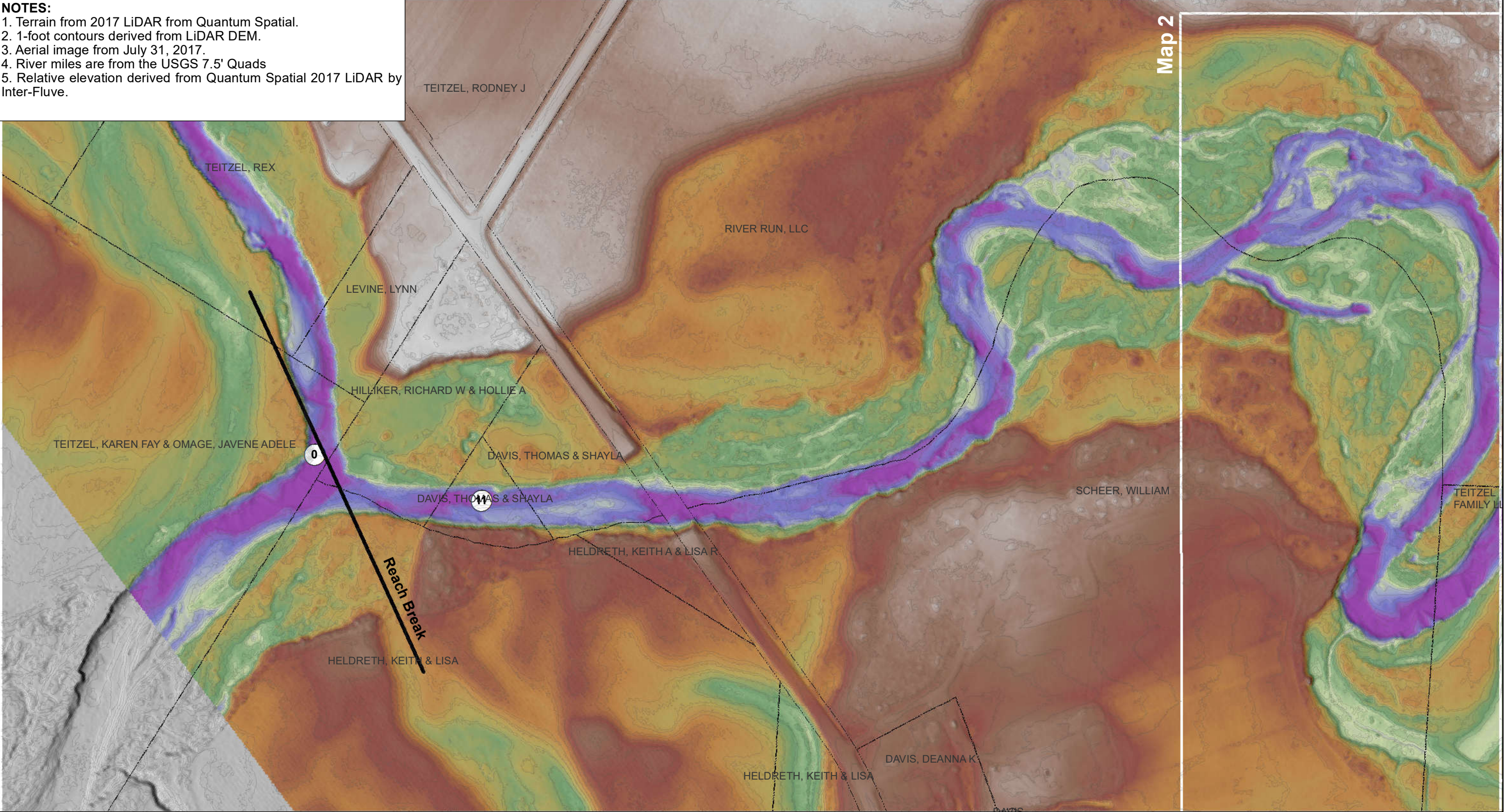
Map Matchlines
Parcels
River Miles



River Survey - Map 1 of 4

Early Action Reach RM: 10.9 to 13.0
South Fork Newaukum River, WA
Chehalis Basin ASRP Design

- NOTES:**
1. Terrain from 2017 LiDAR from Quantum Spatial.
 2. 1-foot contours derived from LiDAR DEM.
 3. Aerial image from July 31, 2017.
 4. River miles are from the USGS 7.5' Quads
 5. Relative elevation derived from Quantum Spatial 2017 LiDAR by Inter-Fluve.



DRAFT

Projection: NAD 1983
State Plane Washington South FIPS 4602

0 200 400

Feet

Relative Elevation (feet)

20 18 16 14 12 10 8 6 4 2 0 -2

Map Matchlines

Parcels

4 River Miles

River Survey - Map 1 of 4

Early Action Reach RM: 10.9 to 13.0

South Fork Newaukum River, WA

Chehalis Basin ASRP Design

1. Terrain from 2017 LiDAR from Quantum Spatial.
2. 1-foot contours derived from LiDAR DEM.
3. Aerial image from July 31, 2017.
4. River miles are from the USGS 7.5' Quads
5. Relative elevation derived from Quantum Spatial 2017 LiDAR by Inter-Fluve.

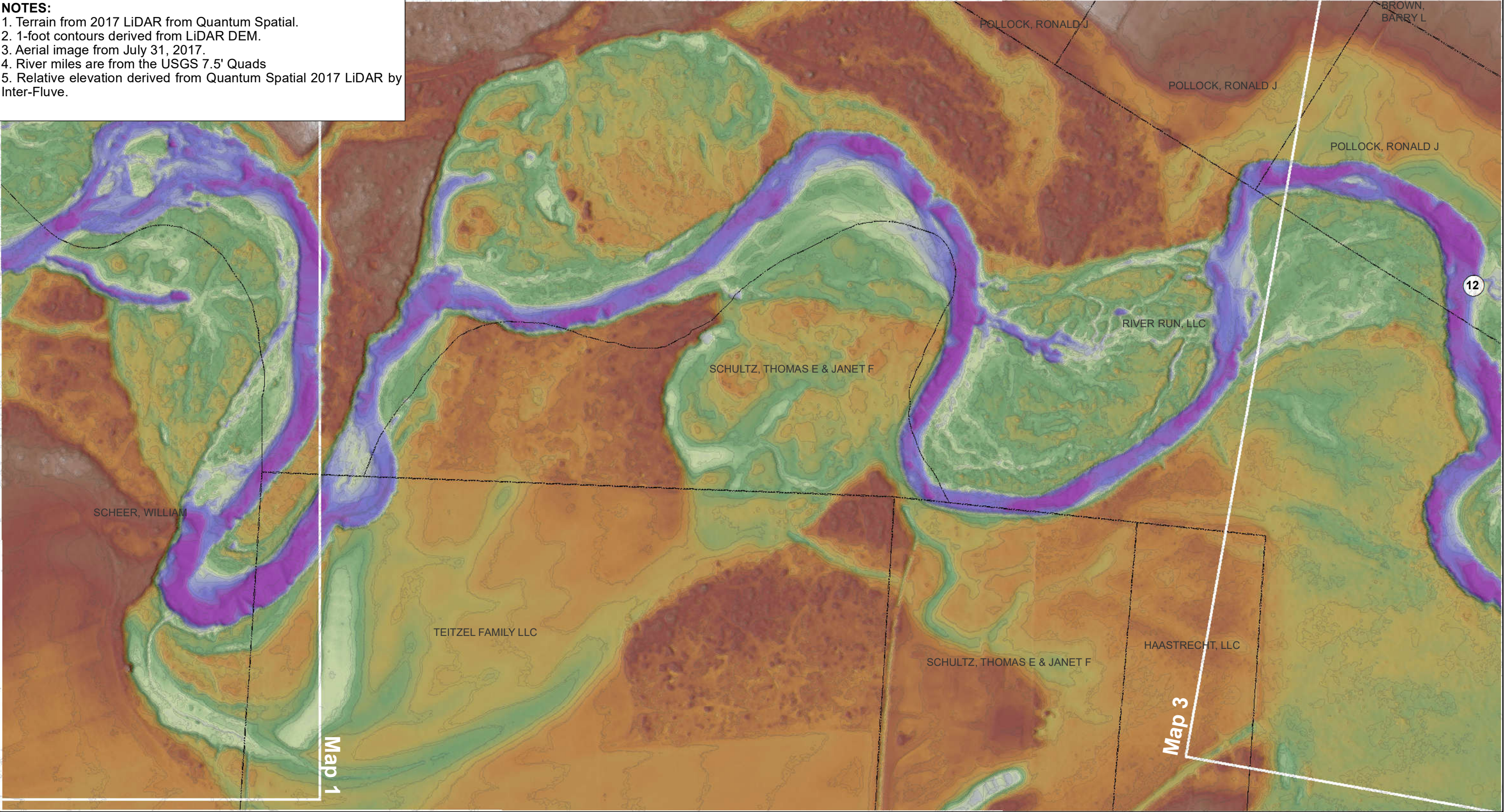


0 Feet 400


 200

- Early Action Reach RM: 10.9 to 13.0
South Fork Newaukum River, WA
Chehalis Basin ASRP Design

- NOTES:**
- 1. Terrain from 2017 LiDAR from Quantum Spatial.
 - 2. 1-foot contours derived from LiDAR DEM.
 - 3. Aerial image from July 31, 2017.
 - 4. River miles are from the USGS 7.5' Quads
 - 5. Relative elevation derived from Quantum Spatial 2017 LiDAR by Inter-Fluve.



DRAFT



Projection: NAD 1983

State Plane Washington South FIPS 4602

0

200

400

Feet

Relative Elevation (feet)

20

18

16

14

12

10

8

6

4

2

0

-2

Map Matchlines

Parcels

4

River Miles

River Survey - Map 2 of 4

Early Action Reach RM: 10.9 to 13.0


South Fork Newaukum River, WA

Chehalis Basin ASRP Design


NOTES:
1. Terrain from 2017 LiDAR from Quantum Spatial.
2. 1-foot contours derived from LiDAR DEM.
3. Aerial image from July 31, 2017.
4. River miles are from the USGS 7.5' Quads
5. Relative elevation derived from Quantum Spatial 2017 LiDAR by Inter-Fluve.



DRAFT

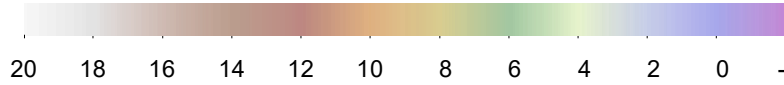


Projection: NAD 1983
State Plane Washington South FIPS 4602



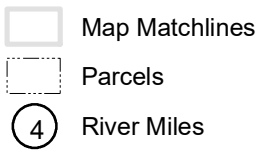
0 200 400
Feet

Relative Elevation (feet)



20 18 16 14 12 10 8 6 4 2 0 -2

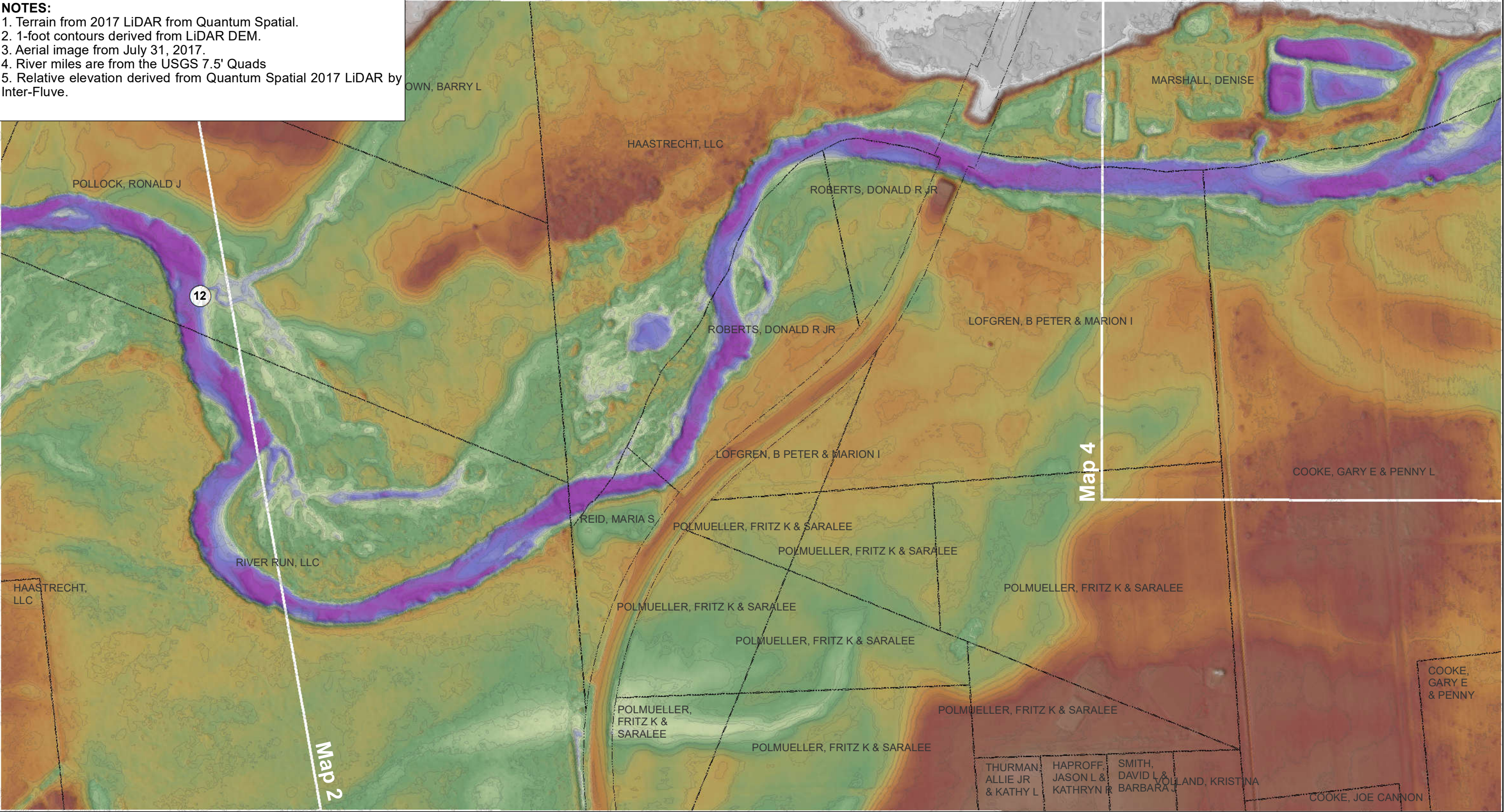
Map Matchlines
Parcels
River Miles



River Survey - Map 3 of 4

Early Action Reach RM: 10.9 to 13.0
South Fork Newaukum River, WA
Chehalis Basin ASRP Design

- NOTES:**
- 1. Terrain from 2017 LiDAR from Quantum Spatial.
 - 2. 1-foot contours derived from LiDAR DEM.
 - 3. Aerial image from July 31, 2017.
 - 4. River miles are from the USGS 7.5' Quads
 - 5. Relative elevation derived from Quantum Spatial 2017 LiDAR by Inter-Fluve.



Projection: NAD 1983
State Plane Washington South FIPS 4602

Feet
0 200 400

Relative Elevation (feet)

20 18 16 14 12 10 8 6 4 2 0 -2

Map Matchlines

Parcels

River Miles

River Survey - Map 3 of 4

Early Action Reach RM: 10.9 to 13.0
South Fork Newaukum River, WA
Chehalis Basin ASRP Design

NOTES:
1. Terrain from 2017 LiDAR from Quantum Spatial.
2. 1-foot contours derived from LiDAR DEM.
3. Aerial image from July 31, 2017.
4. River miles are from the USGS 7.5' Quads
5. Relative elevation derived from Quantum Spatial 2017 LiDAR by Inter-Fluve.



- NOTES:**
- 1. Terrain from 2017 LiDAR from Quantum Spatial.
 - 2. 1-foot contours derived from LiDAR DEM.
 - 3. Aerial image from July 31, 2017.
 - 4. River miles are from the USGS 7.5' Quads
 - 5. Relative elevation derived from Quantum Spatial 2017 LiDAR by Inter-Fluve.

