

Project Name Kersh-Wishkah Flood Levee
Company Name Grays Harbor County



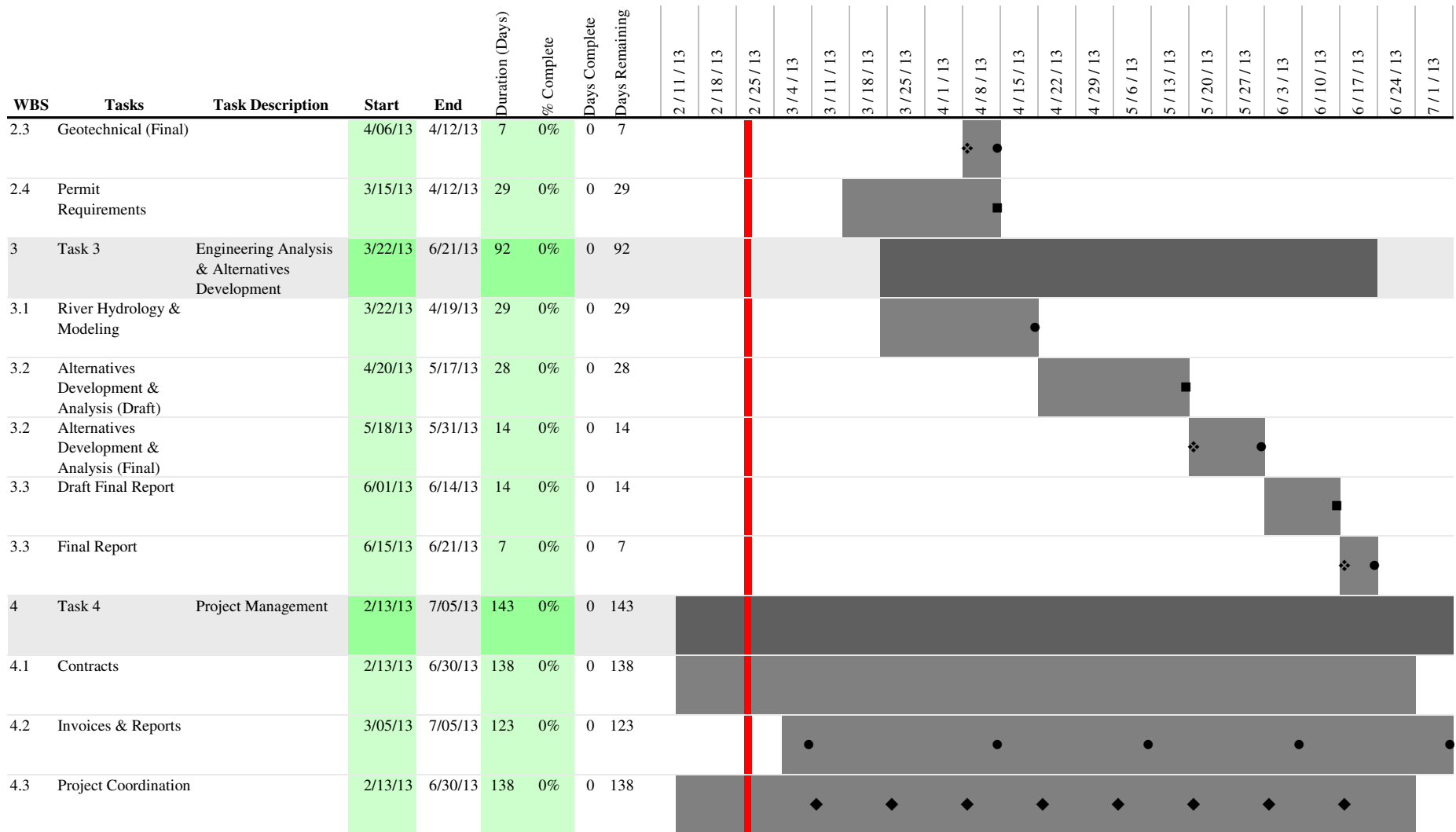
Project Lead: Russ Esses (County)/Ryan Bartelheimer (AMEC)

Today's Date: 2/26/2013 (vertical red line)

Start Date: 2/13/2013 (Wed)

Dates signify beginning of the week





Symbols Legend:

- ◆ Meeting or Conference Call
- ❖ Internal and/or County Review
- Draft Deliverable Due
- Final Deliverable Due