

Lewis County, Washington
Shoreline Master Program

Map 16C - Impervious Surface

Figure: Centralia

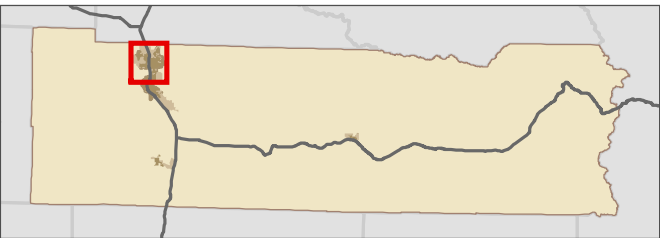
Date: 6/3/2014

- Impervious Surface in the SMA Jurisdiction
- SMA Rivers & Streams
- SMA Lakes
- Highways
- SMA Jurisdiction
- City
- UGA

0 0.25 0.5 Miles 1:37,000



Area of interest in red



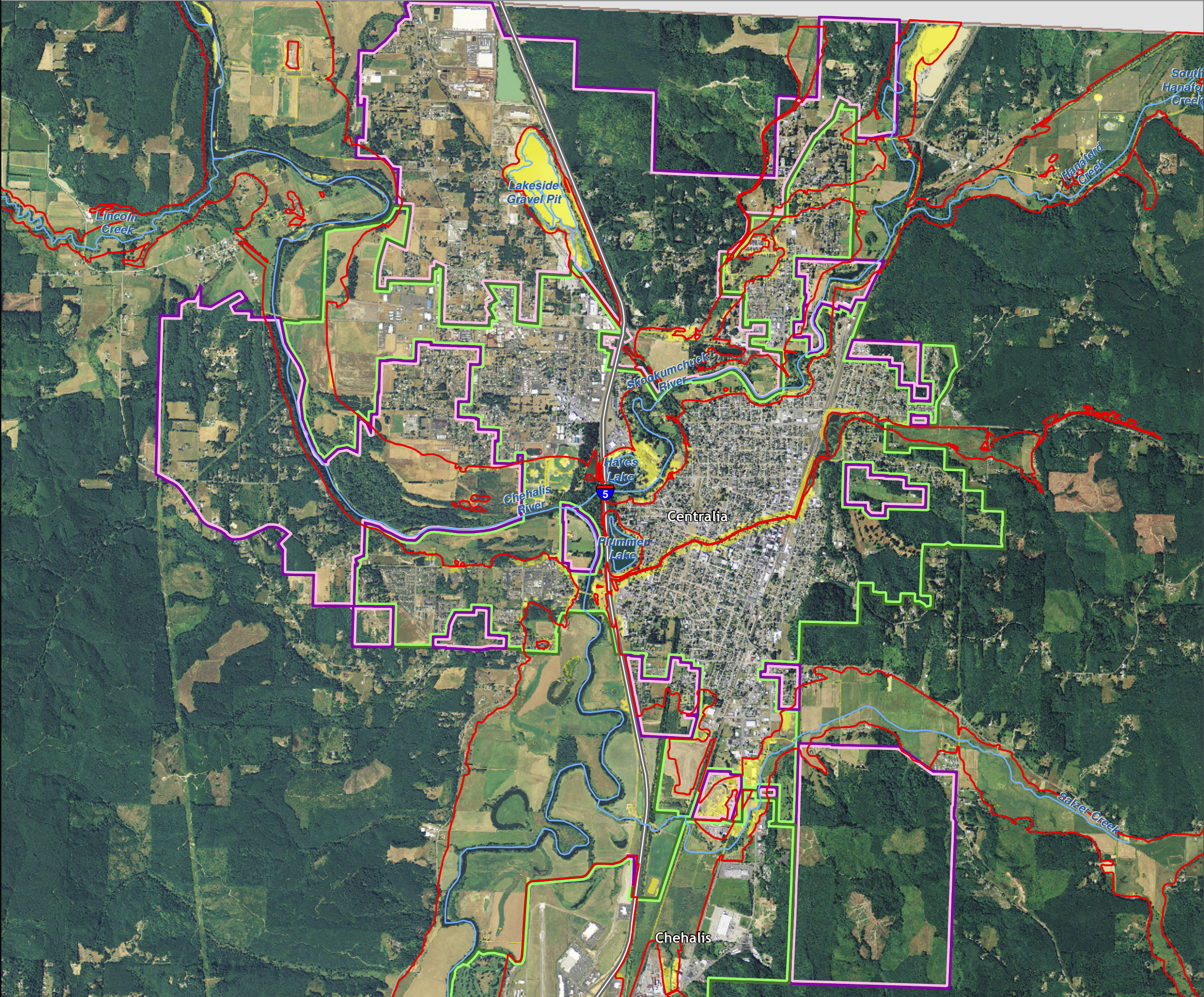
Data: Lewis County, USFWS NWI, FEMA, WA DNR, WSDOT, NRCS NAIP

Shoreline jurisdiction boundaries depicted on this map are approximate. They have not been formally delineated or surveyed and are intended for planning purposes only. Additional site-specific evaluation may be needed to confirm/verify information shown on this map.

Lewis County Coalition



City of Morton City of Winlock




Lewis County, Washington Shoreline Master Program

Map 16C - Impervious Surface

Figure: Chehalis

Date: 6/3/2014

 Impervious Surface in the SMA Jurisdiction

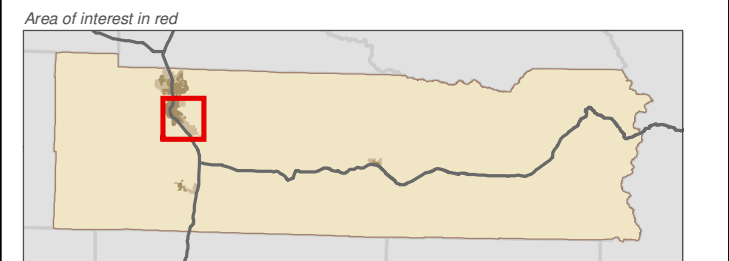
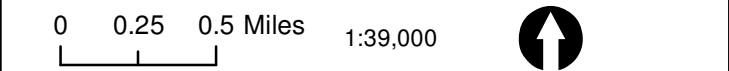
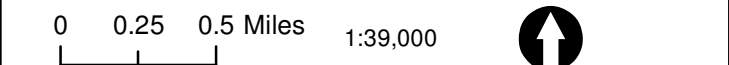
SMA Rivers & Streams

 SMA Lakes

 Highways☐ SMA Jurisdiction

City

 UGA



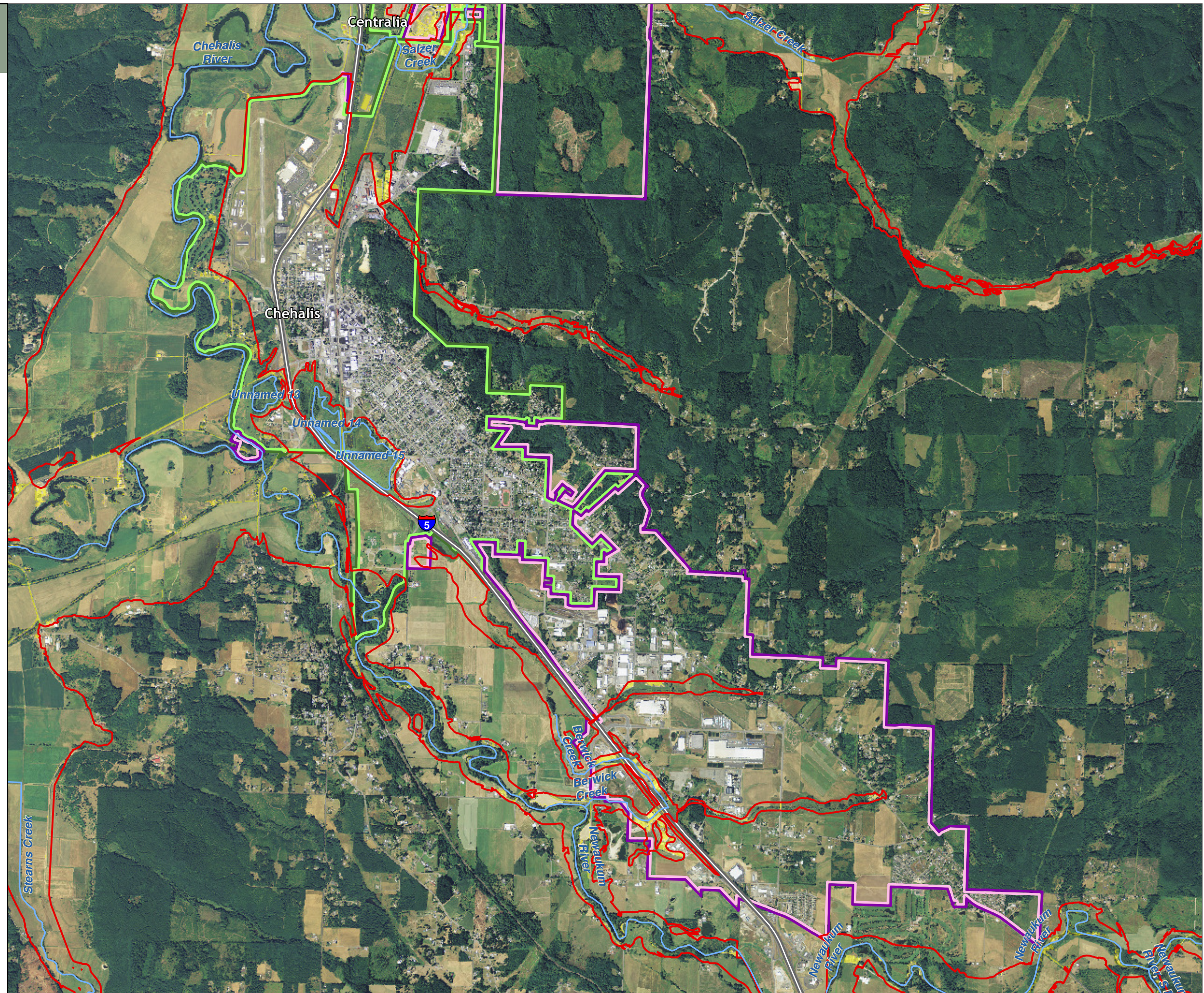
Data: Lewis County, USFWS NWI, FEMA,
WA DNR, WSDOT, NRCS NAIP

Shoreline jurisdiction boundaries depicted on this map are approximate. They have not been formally delineated or surveyed and are intended for planning purposes only. Additional site-specific evaluation may be needed to confirm/verify information shown on this map.

Lewis County Coalition



City of Morton City of Winlock



Lewis County, Washington
Shoreline Master Program

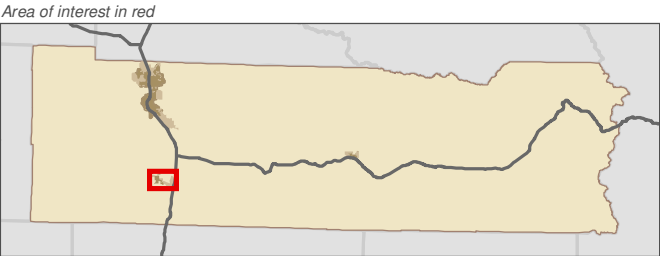
Map 16C - Impervious Surface

Figure: Winlock

Date: 6/3/2014

- Impervious Surface in the SMA Jurisdiction
- SMA Rivers & Streams
- SMA Lakes
- Highways
- SMA Jurisdiction
- City
- UGA

0 0.125 0.25 Miles 1:21,000



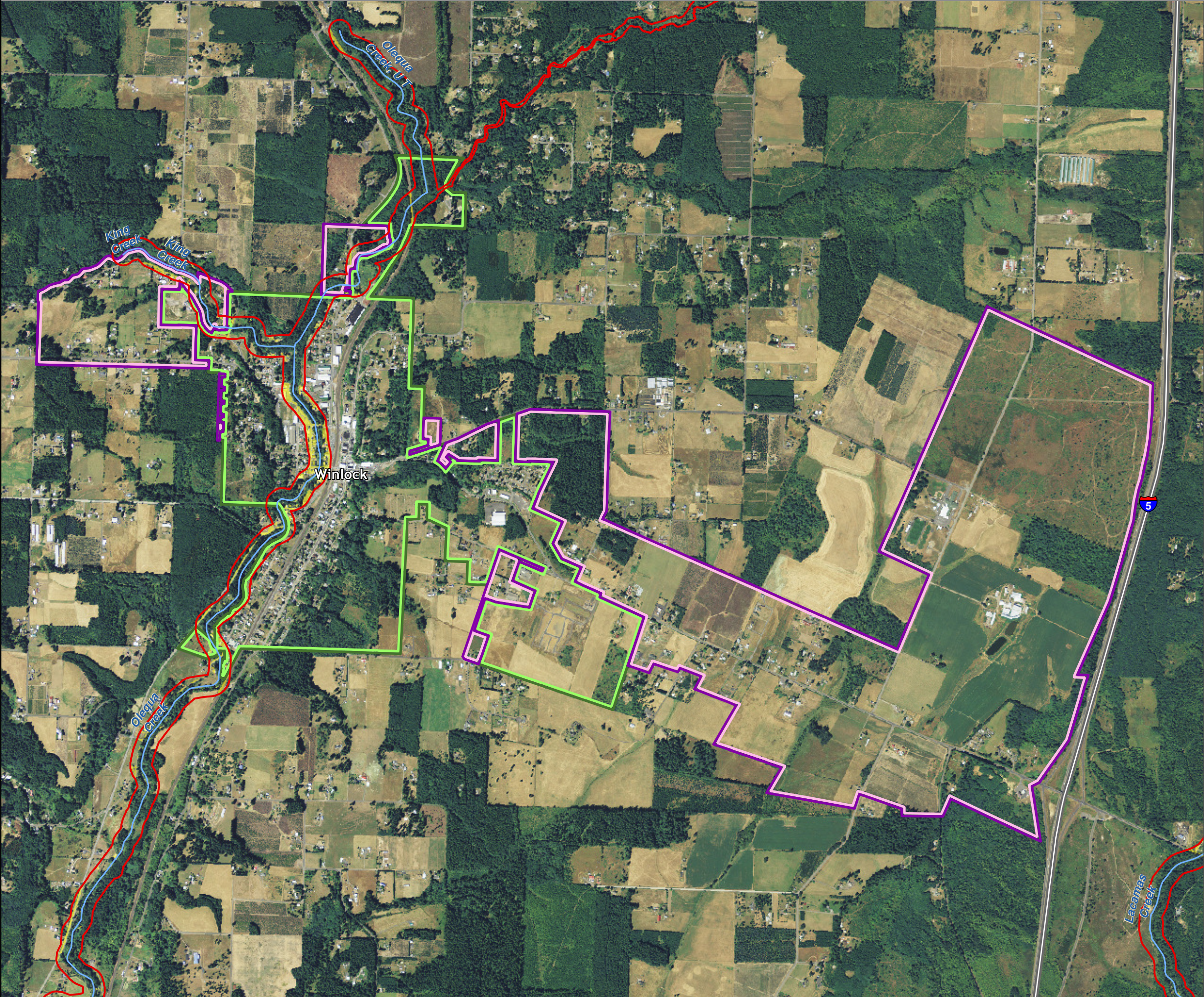
Data: Lewis County, USFWS NWI, FEMA, WA DNR, WSDOT, NRCS NAIP

Shoreline jurisdiction boundaries depicted on this map are approximate. They have not been formally delineated or surveyed and are intended for planning purposes only. Additional site-specific evaluation may be needed to confirm/verify information shown on this map.

Lewis County Coalition



City of Morton City of Winlock



Lewis County, Washington
Shoreline Master Program

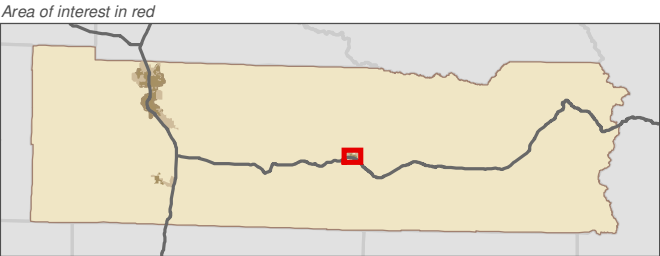
Map 16C - Impervious Surface

Figure: Morton

Date: 6/3/2014

- Impervious Surface in the SMA Jurisdiction
- SMA Rivers & Streams
- SMA Lakes
- Highways
- SMA Jurisdiction
- City
- UGA

0 0.075 0.15 Miles 1:13,000



Data: Lewis County, USFWS NWI, FEMA, WA DNR, WSDOT, NRCS NAIP

Shoreline jurisdiction boundaries depicted on this map are approximate. They have not been formally delineated or surveyed and are intended for planning purposes only. Additional site-specific evaluation may be needed to confirm/verify information shown on this map.

Lewis County Coalition



City of Morton City of Winlock

