

NORTH SHORE LEVEE PROJECT UPDATE

The purpose of the North Shore Levee project is to provide flood protection to as many people as is feasible. Hoquiam has been a part of FEMA's flood insurance program since 1979, and Aberdeen since 1984.

Hoquiam and Aberdeen residents pay \$2.3 million in flood insurance each year.

As of 2014, the amount of money leaving the communities of Aberdeen and Hoquiam in flood insurance premiums was \$2.3 million per year. Before the January 2015 storm, the cities had only received \$0.9 million back from FEMA in claims.

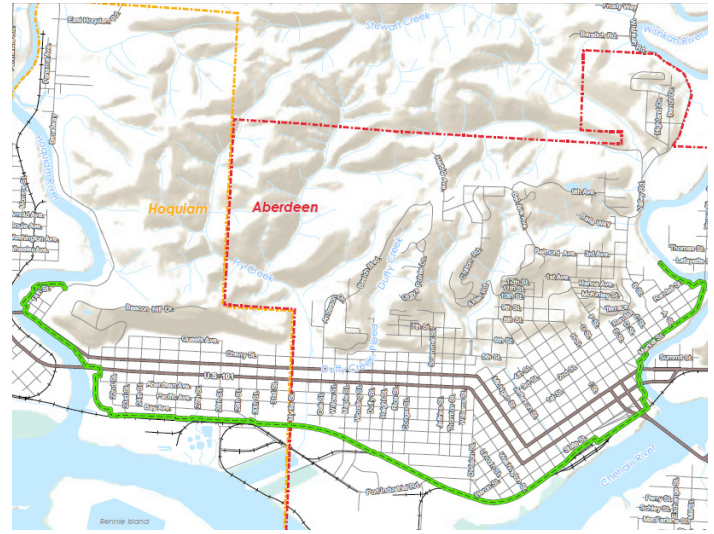
The North Shore Levee will save residents hundreds of dollars each year.

Once the levee and required drainage infrastructure is built, more than 2,700 properties will be protected from flooding and will no longer be required by FEMA to carry flood insurance. Instead, that money will stay in the local economy once the levee is constructed.

FEMA is reviewing the preliminary design.

The City of Aberdeen is submitting the Conditional Letter of Map Revision (CLOMR) application to FEMA for review. If FEMA approves the design, it means that FEMA would agree to modify their flood maps once the levee is constructed and FEMA has confirmed that the levee was built to the standards laid out in the CLOMR. The modified flood maps would remove areas of Aberdeen and Hoquiam protected by the levee, lifting the requirement to hold flood insurance. The Cities' engineers are preparing the final design in anticipation of FEMA approval. Final design is expected to be complete by the end of 2018. **The entire levee design and permitting process is being funded by a grant from the Chehalis River Basin Flood Authority.**

Map of North Shore Levee Alignment (generalized)



Rendering of the North Shore Levee with a stop-log at Port Industrial & Myrtle.



The levee will vary in height, and may be as high as four feet from the ground.

COMING SOON!

The Cities of Aberdeen and Hoquiam are dedicated to keeping the public informed as this process moves forward. Regular communications and updates will be provided by city staff through a variety of media outlets and publications as this project moves forward.

For more information about the North Shore Levee and upcoming public outreach events, visit our website at ezview.wa.gov/aberdeenfloodrelief

You can contact the project team at:
northshoreleveeteam@kpff.com

OR talk to City Engineer, Kris Koski at:
kkoski@aberdeenwa.gov | (360) 537-3218

TIMBERWORKS: TURNING THE MASTER PLAN INTO ACTION

The Cities of Aberdeen and Hoquiam are focusing on implementing the recommendations of the TimberWorks Master Plan. TimberWorks was developed through a community planning process in 2016 and includes 34 recommended actions to reduce flood risk while achieving other benefits including water quality improvements, habitat enhancement, and community and economic development. Progress is being made on several of the priority recommendations of the Master Plan: Fry Creek, Increasing Capacity of the Storm Drain and Pump System, and the North Shore Levee (see other side).

Fry Creek

The Cities are collaborating on design of the Fry Creek Flood Restoration and Flood Reduction project. The City has received a \$500,000 grant from the Chehalis River Basin Flood Authority to design plans for the project that will extend from the Grays Harbor Public Utility District facility south to the mouth of the creek. The Fry Creek project will include improvements to culverts that are choke points for high flows and barriers to fish passage. The project will also include modifications to the stream channel to create more capacity to store flood waters and add native plants and features that enhance fish habitat. This project will also create opportunities for public open space and trails along the creek.

The design is scheduled to be completed by the spring of 2018. The Cities have applied for grants from the Washington Coast Restoration Initiative and from the National Oceanic and Atmospheric Administration Coastal Resilience program to fund implementation of the project.

Improving Pumps and Storm Drains

Most of the stormwater pipes and pumps in Aberdeen and Hoquiam are under-sized, aging, and subject to clogging from sediments. Upgrading the pumps and pipes are a high priority as stand alone projects. For areas to be protected by the North Shore Levee project, upgraded pumps will be required to ensure that the dike doesn't create a bathtub during floods.

The City of Hoquiam has received a \$1.3 million grant from the Chehalis River Basin Flood Authority to replace the Raymer Street pump station and stormwater lines. Design of this project is underway and construction is scheduled to be completed by the summer of 2018. This project was identified as a top priority in the City's Surface Water Plan in 2000 and the TimberWorks Master Plan. The improvements will reduce flooding in the area between Lincoln Street and the Hoquiam River.

COMMUNITY OPEN HOUSE

The City would like to hear your ideas about the Fry Creek Flood Reduction and Restoration Project. Please join us to hear about the findings of technical studies of water flow and flooding along Fry Creek and share your ideas on ways to improve conditions.

When: Thursday, July 27th | 5 - 7 PM (join anytime!)

Where: Grays Harbor PUD

Dennis Nichols Building
220 Myrtle Street
Hoquiam, WA 98550



GREAT NEWS!

The TimberWorks Master Plan has received the Governor's Smart Communities Award!

For more information about this project, contact Kris Koski (see other side).