
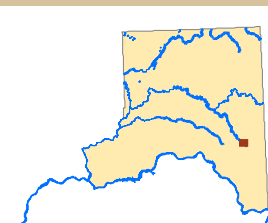


Proposed Environment Designations



— SMP Stream<sup>TWC</sup>

— SMP Waterbody<sup>TWC</sup>

City or Town Limit<sup>ECy</sup>

**Proposed Environment Designations<sup>1, 2 TWC</sup>**


City of Pullman

- High Intensity
- Rural Conservancy
- Shoreline Parks
- Shoreline Residential
- Urban Conservancy



Notes:

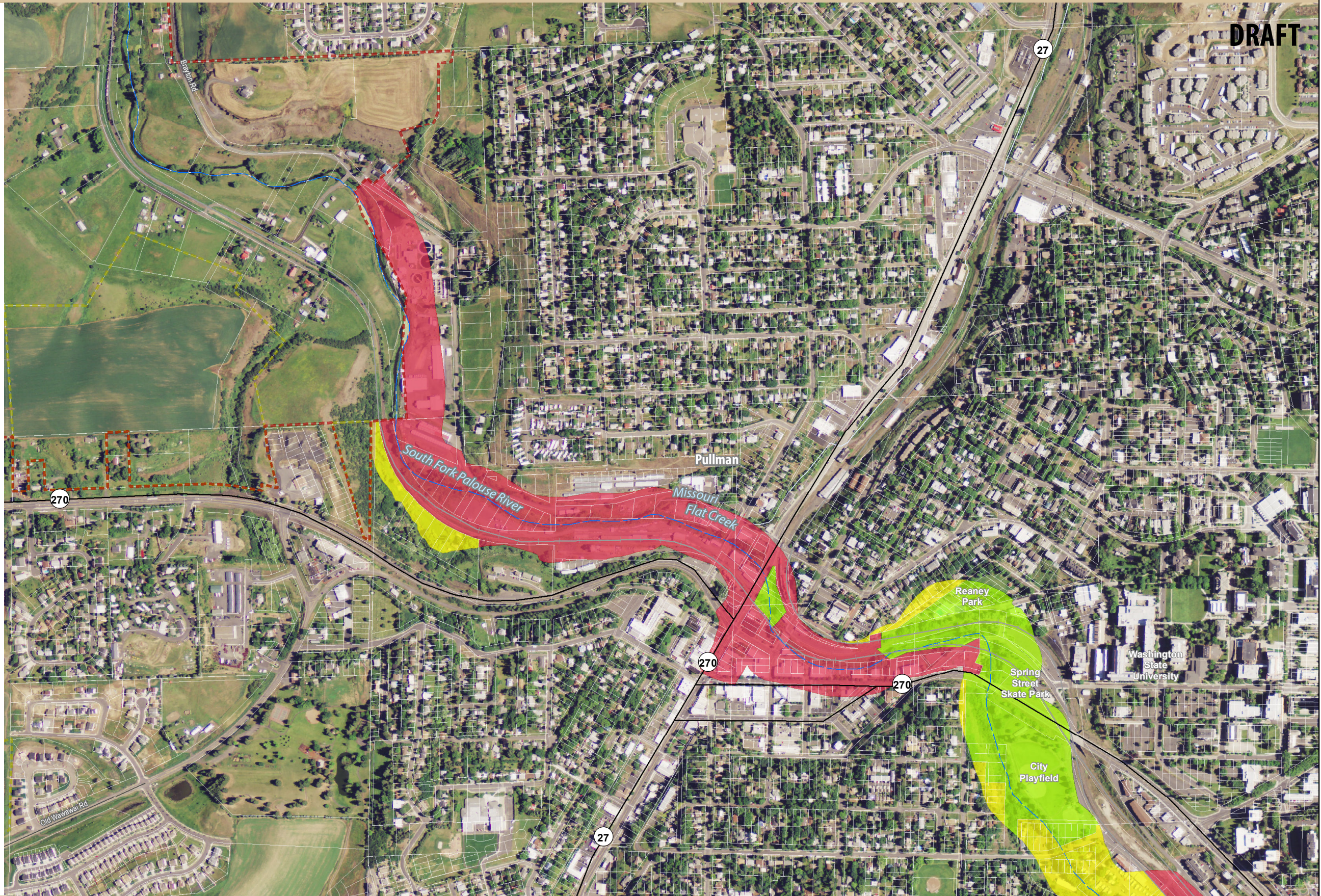
<sup>1</sup> Shoreline areas waterward of the ordinary high water mark (OHWM) are assigned an Aquatic environment designation.

<sup>2</sup> Details of "Rural Industrial/Port" designated areas can be found on County pages 14 and 15.



Original scale = 1:8,500  
@ 11" x 17" layout.  
Please scale accordingly.



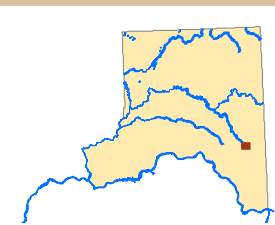




Proposed Environment Designations

City of Pullman (South)

DRAFT



- SMP Stream<sup>TWC</sup>
- SMP Waterbody<sup>TWC</sup>
- City or Town Limit<sup>Ecy</sup>

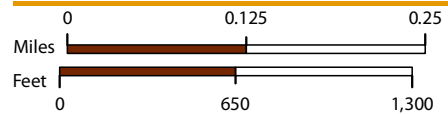
Proposed Environment Designations<sup>1, 2 TWC</sup>

City of Pullman

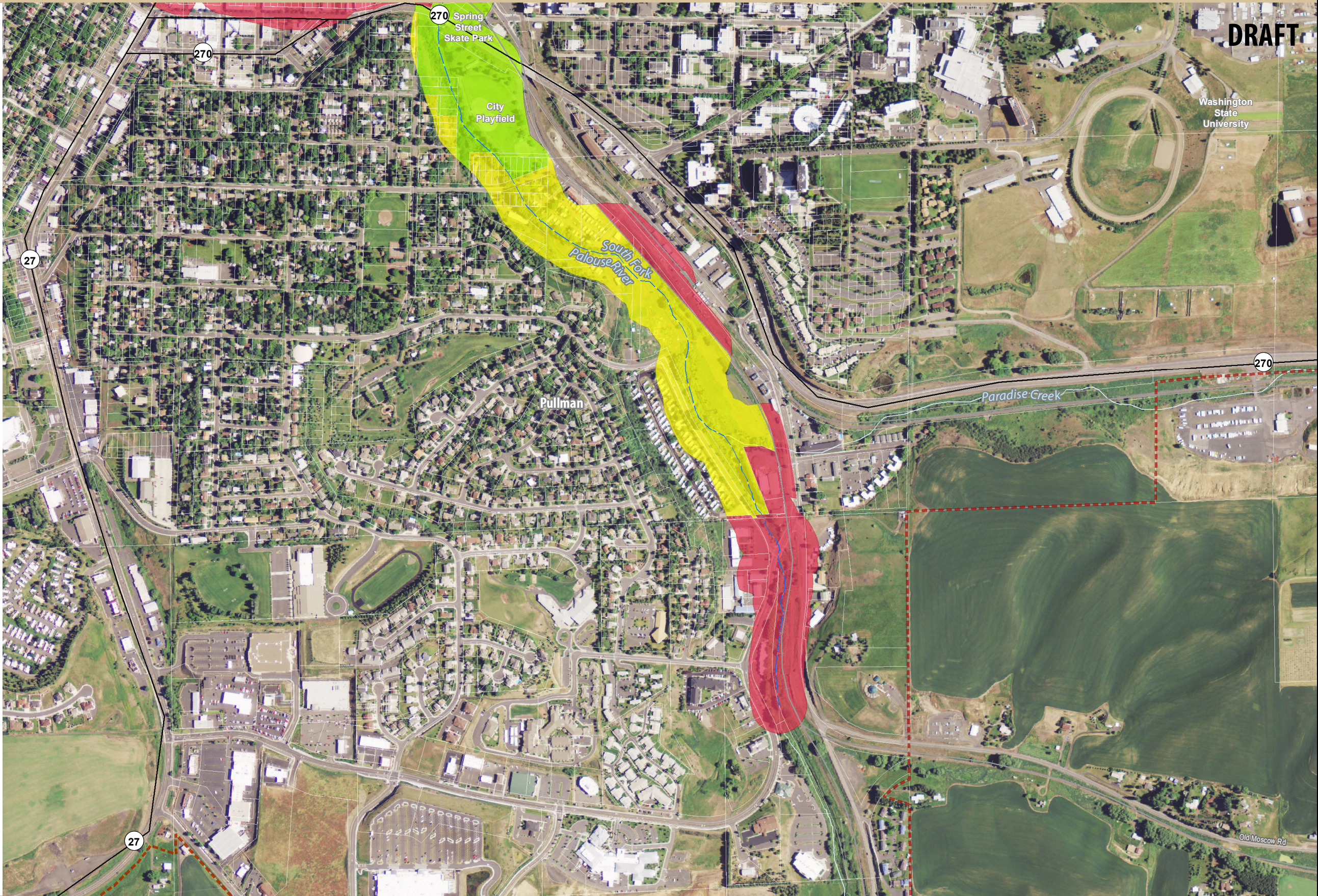
- High Intensity
- Shoreline Parks
- Shoreline Residential

Notes:

<sup>1</sup> Shoreline areas waterward of the ordinary high water mark (OHWM) are assigned an Aquatic environment designation.  
<sup>2</sup> Details of "Rural Industrial/Port" designated areas can be found on County pages 14 and 15.



Original scale = 1:8,500  
@ 11" x 17" layout.  
Please scale accordingly.



All features depicted on this map are approximate. They have not been formally delineated or surveyed and are intended for planning purposes only. Additional site-specific evaluation may be needed to confirm/verify information shown on this map.