



— SMP Stream^{TWC}

— SMP Waterbody^{TWC}

City or Town Limit^{Ecy}

Proposed Environment Designations^{1, 2 TWC}

County

- Natural
- Rural Conservancy
- Rural Industrial/Port
- Shoreline Parks

Notes:

¹ Shoreline areas waterward of the ordinary high water mark (OHWM) are assigned an Aquatic environment designation.

² Details of "Rural Industrial/Port" designated areas can be found on County pages 14 and 15.

00.512

Miles

0500010000

Feet



Original scale = 1:85,000 @ 11" x 17" layout. *Please scale*



DRAFT

All features depicted on this map are approximate. They have not been formally delineated or surveyed and are intended for planning purposes only. Additional site-specific evaluation may be needed to confirm/verify information shown on this map.

Date: 12/2/2014

Data Sources (not listed above): Roadways and rail from DOT. Aerial imagery from 2013 USDA NAIP. Source abbreviations are described on the map folio cover sheet.



— SMP Stream^{TWC}

— SMP Waterbody^{TWC}

City or Town Limit^{Ecy}

Proposed Environment Designations^{1, 2 TWC}

County

Rural Conservancy

Rural Industrial/Port

Shoreline Parks

Notes:

¹ Shoreline areas waterward of the ordinary high water mark (OHWM) are assigned an Aquatic environment designation.

² Details of "Rural Industrial/Port" designated areas can be found on County pages 14 and 15.

0 0.5 1 2

Miles

0 5,000 10,000

Feet



Original scale = 1:85,000 @ 11" x 17" layout. *Please scale*

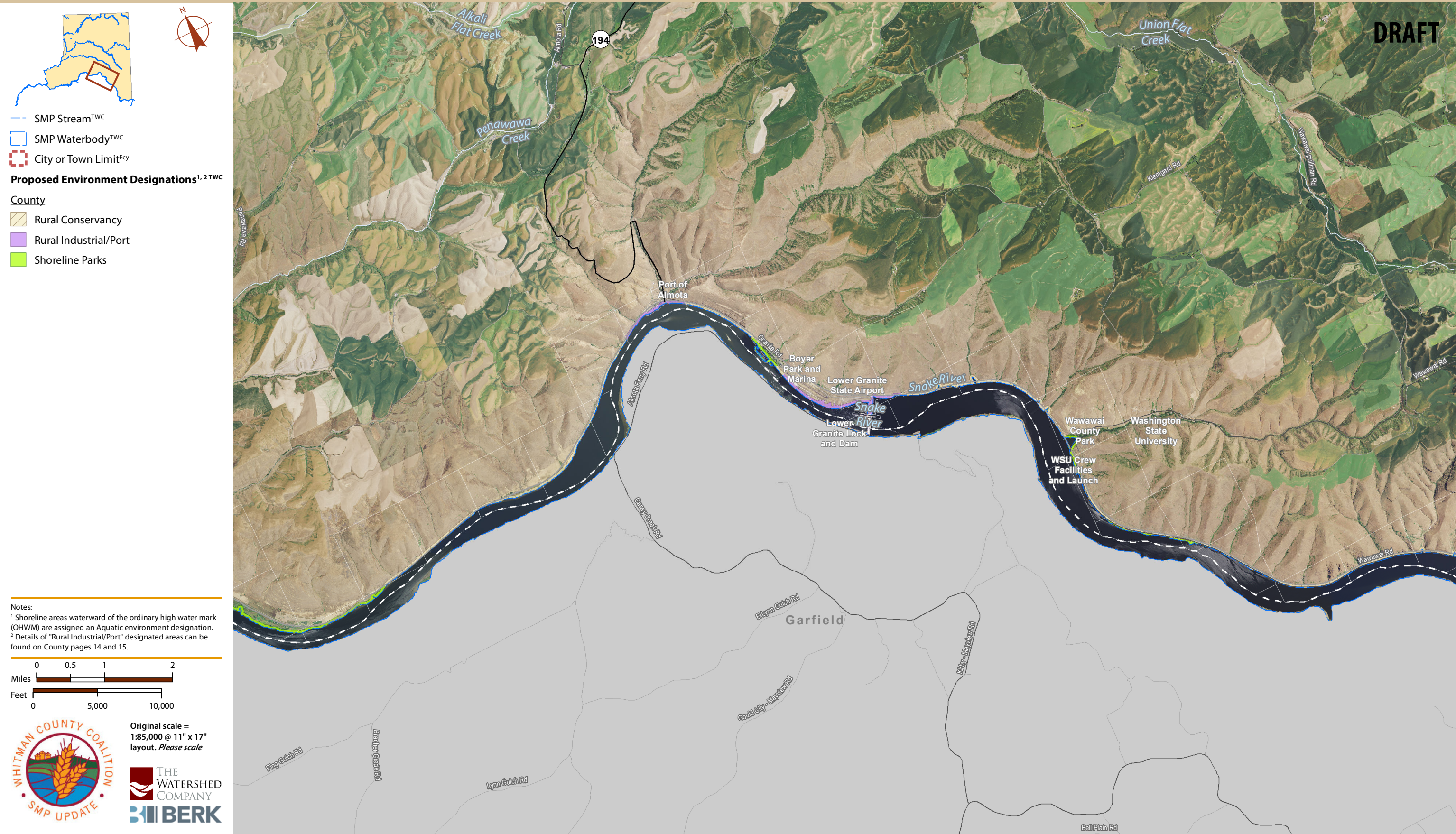


BERK


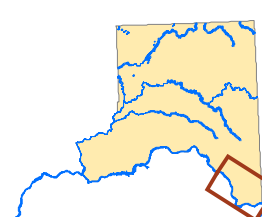
All features depicted on this map are approximate. They have not been formally delineated or surveyed and are intended for planning purposes only. Additional site-specific evaluation may be needed to confirm/verify information shown on this map.

Date: 12/2/2014

Data Sources (not listed above): Roadways and rail from DOT. Aerial imagery from 2013 USDA NAIP. Source abbreviations are described on the map folio cover sheet.



DRAFT



— SMP Stream^{TWC}

— SMP Waterbody^{TWC}

City or Town Limit^{Ecy}

Proposed Environment Designations^{1, 2 TWC}

County

Rural Conservancy

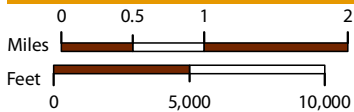
Rural Industrial/Port

Shoreline Parks

Notes:

¹ Shoreline areas waterward of the ordinary high water mark (OHWM) are assigned an Aquatic environment designation.

² Details of "Rural Industrial/Port" designated areas can be found on County pages 14 and 15.





Original scale = 1:85,000 @ 11" x 17" layout. *Please scale*



BERK





— SMP Stream^{TWC}

▭ SMP Waterbody^{TWC}

▭ City or Town Limit^{Ecy}

Proposed Environment Designations^{1, 2 TWC}

County

▭ Rural Conservancy

Notes:

¹ Shoreline areas waterward of the ordinary high water mark (OHWM) are assigned an Aquatic environment designation.

² Details of "Rural Industrial/Port" designated areas can be found on County pages 14 and 15.

0 0.5 1 2

Miles

0 5,000 10,000

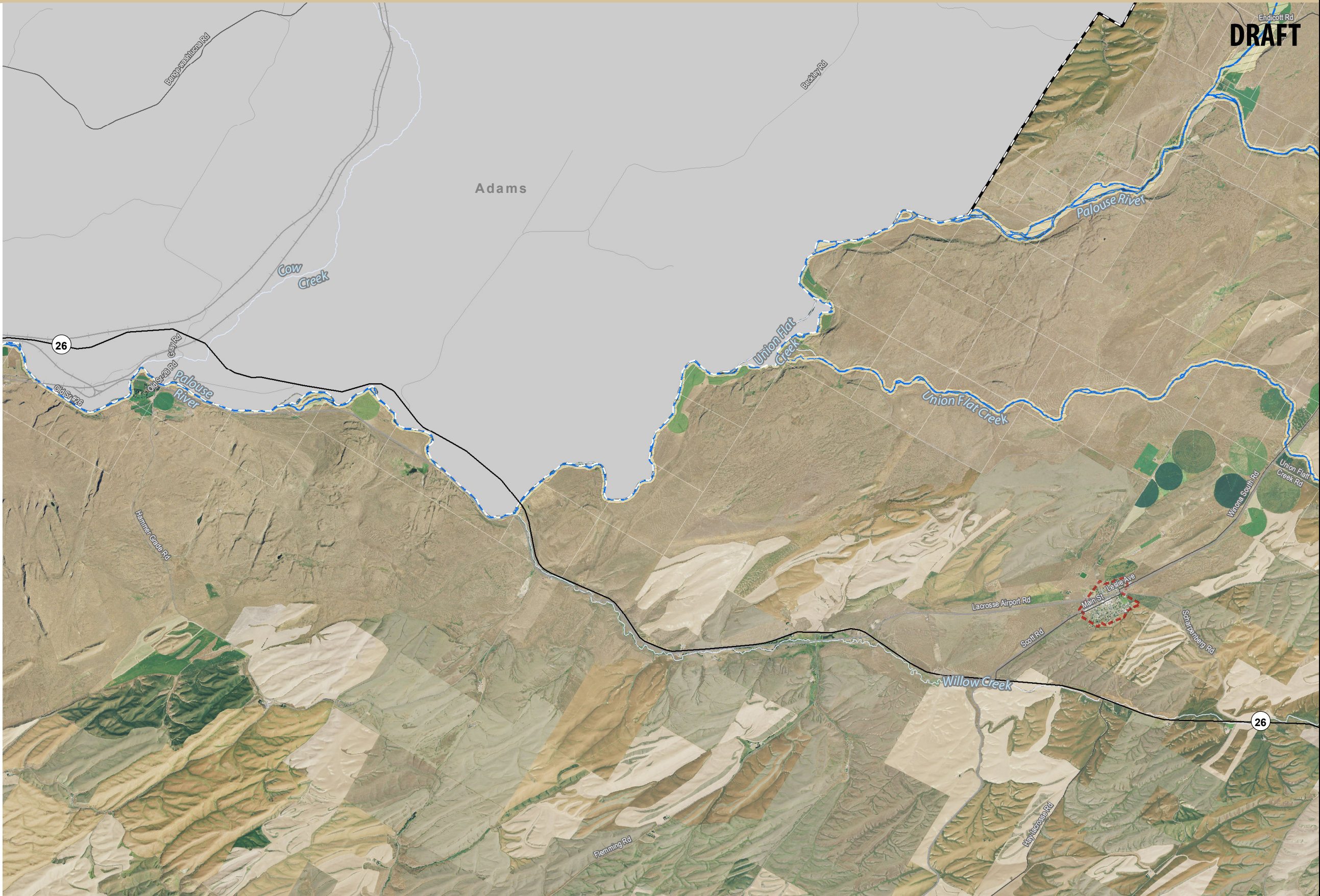
Feet





Original scale = 1:85,000 @ 11" x 17" layout. *Please scale*



BERK



DRAFT



— SMP Stream^{TWC}

— SMP Waterbody^{TWC}

City or Town Limit^{City}

Proposed Environment Designations^{1, 2 TWC}

County

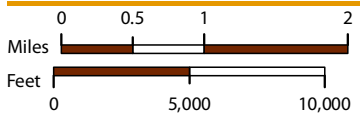
Rural Conservancy






Notes:

¹ Shoreline areas waterward of the ordinary high water mark (OHWM) are assigned an Aquatic environment designation.

² Details of "Rural Industrial/Port" designated areas can be found on County pages 14 and 15.





Original scale = 1:85,000 @ 11" x 17" layout. *Please scale*



— SMP Stream^{TWC}

— SMP Waterbody^{TWC}

City or Town Limit^{City}

Proposed Environment Designations^{1, 2 TWC}

County

- High Intensity
- Rural Conservancy
- Shoreline Parks

Notes:

¹ Shoreline areas waterward of the ordinary high water mark (OHWM) are assigned an Aquatic environment designation.

² Details of "Rural Industrial/Port" designated areas can be found on County pages 14 and 15.

0

0.5

1

2

Miles

0

5,000

10,000

Feet



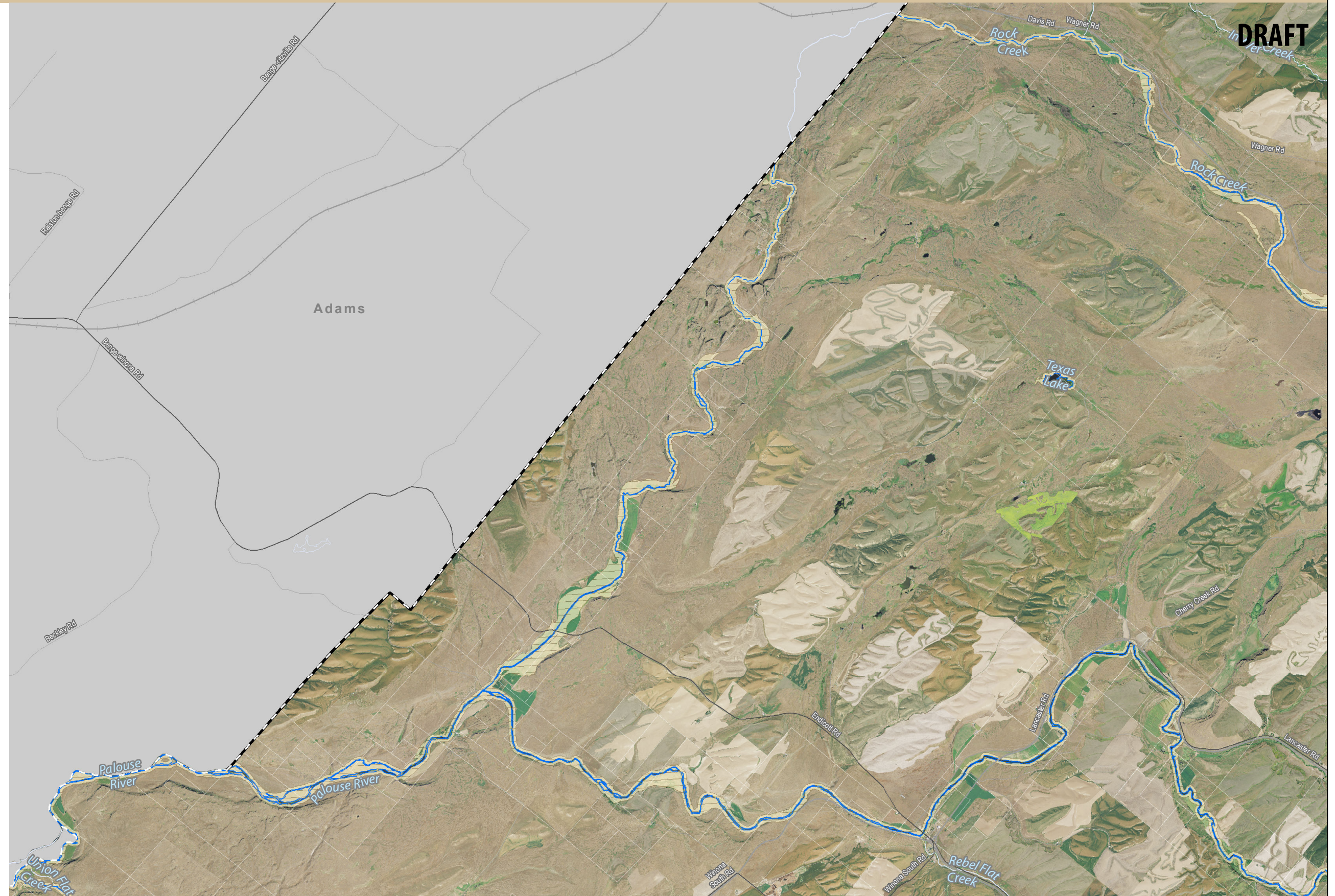
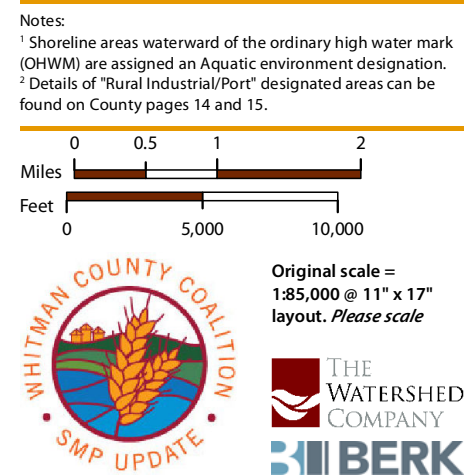
Original scale = 1:85,000 @ 11" x 17" layout. *Please scale*




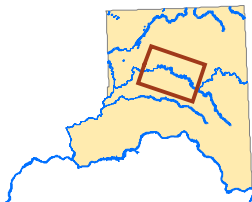
All features depicted on this map are approximate. They have not been formally delineated or surveyed and are intended for planning purposes only. Additional site-specific evaluation may be needed to confirm/verify information shown on this map.

Date: 12/2/2014

Data Sources (not listed above): Roadways and rail from DOT. Aerial imagery from 2013 USDA NAIP. Source abbreviations are described on the map folio cover sheet.



Date: 12/2/2014



— SMP Stream^{TWC}

— SMP Waterbody^{TWC}

City or Town Limit^{Ecy}

Proposed Environment Designations^{1, 2 TWC}

County

Rural Conservancy

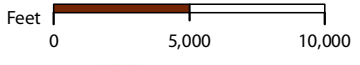
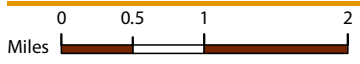
Rural Industrial/Port




Notes:



¹ Shoreline areas waterward of the ordinary high water mark (OHWM) are assigned an Aquatic environment designation.



² Details of "Rural Industrial/Port" designated areas can be found on County pages 14 and 15.





Original scale = 1:85,000 @ 11" x 17" layout. *Please scale*






— SMP Stream^{TWC}


— SMP Waterbody^{TWC}

City or Town Limit^{City}

Proposed Environment Designations^{1, 2 TWC}

County

 Rural Conservancy

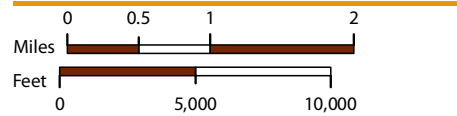
 Rural Industrial/Port




Notes:



¹ Shoreline areas waterward of the ordinary high water mark (OHWM) are assigned an Aquatic environment designation.

² Details of "Rural Industrial/Port" designated areas can be found on County pages 14 and 15.





Original scale = 1:85,000 @ 11" x 17" layout. *Please scale*





— SMP Stream^{TWC}

— SMP Waterbody^{TWC}

City or Town Limit^{City}

Proposed Environment Designations^{1, 2 TWC}

County

Rural Conservancy

Notes:

¹ Shoreline areas waterward of the ordinary high water mark (OHWM) are assigned an Aquatic environment designation.

² Details of "Rural Industrial/Port" designated areas can be found on County pages 14 and 15.

0

0.5

1

2

Miles

0

5,000

10,000

Feet



Original scale = 1:85,000 @ 11" x 17" layout. *Please scale*



THE WATERSHED COMPANY



BERK



All features depicted on this map are approximate. They have not been formally delineated or surveyed and are intended for planning purposes only. Additional site-specific evaluation may be needed to confirm/verify information shown on this map.

Date: 12/2/2014

Data Sources (not listed above): Roadways and rail from DOT. Aerial imagery from 2013 USDA NAIP. Source abbreviations are described on the map folio cover sheet.



— SMP Stream^{TWC}

— SMP Waterbody^{TWC}

City or Town Limit^{City}

Proposed Environment Designations^{1, 2 TWC}

County

- Rural Conservancy
- Rural Industrial/Port
- Urban Conservancy

Notes:

¹ Shoreline areas waterward of the ordinary high water mark (OHWM) are assigned an Aquatic environment designation.

² Details of "Rural Industrial/Port" designated areas can be found on County pages 14 and 15.

0 0.5 1 2

Miles

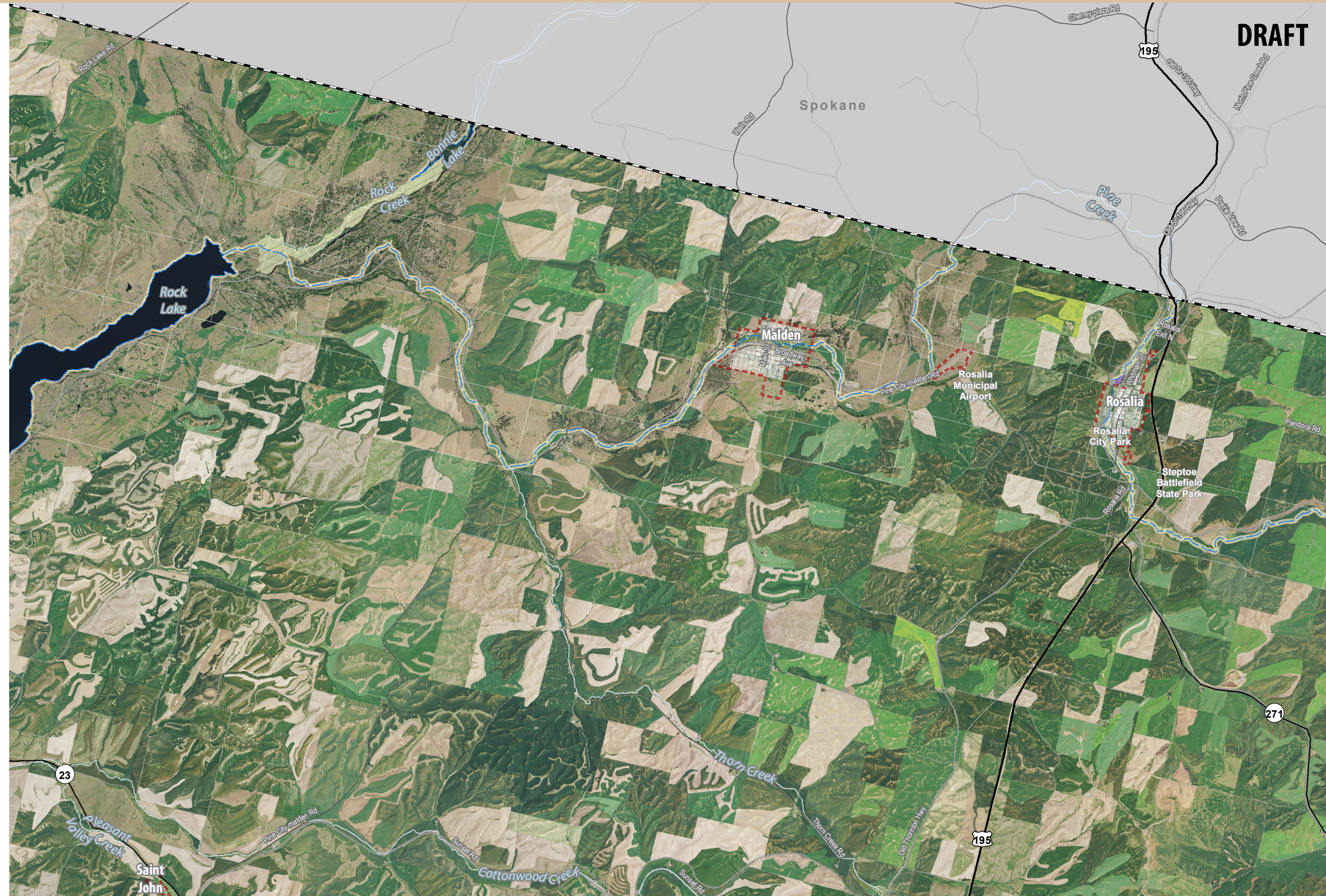
0 5,000 10,000

Feet




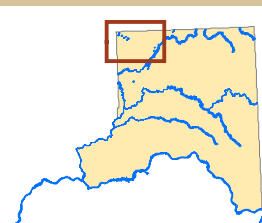
Original scale = 1:85,000 @ 11" x 17" layout. *Please scale*





DRAFT

DRAFT



— SMP Stream^{TWC}

— SMP Waterbody^{TWC}

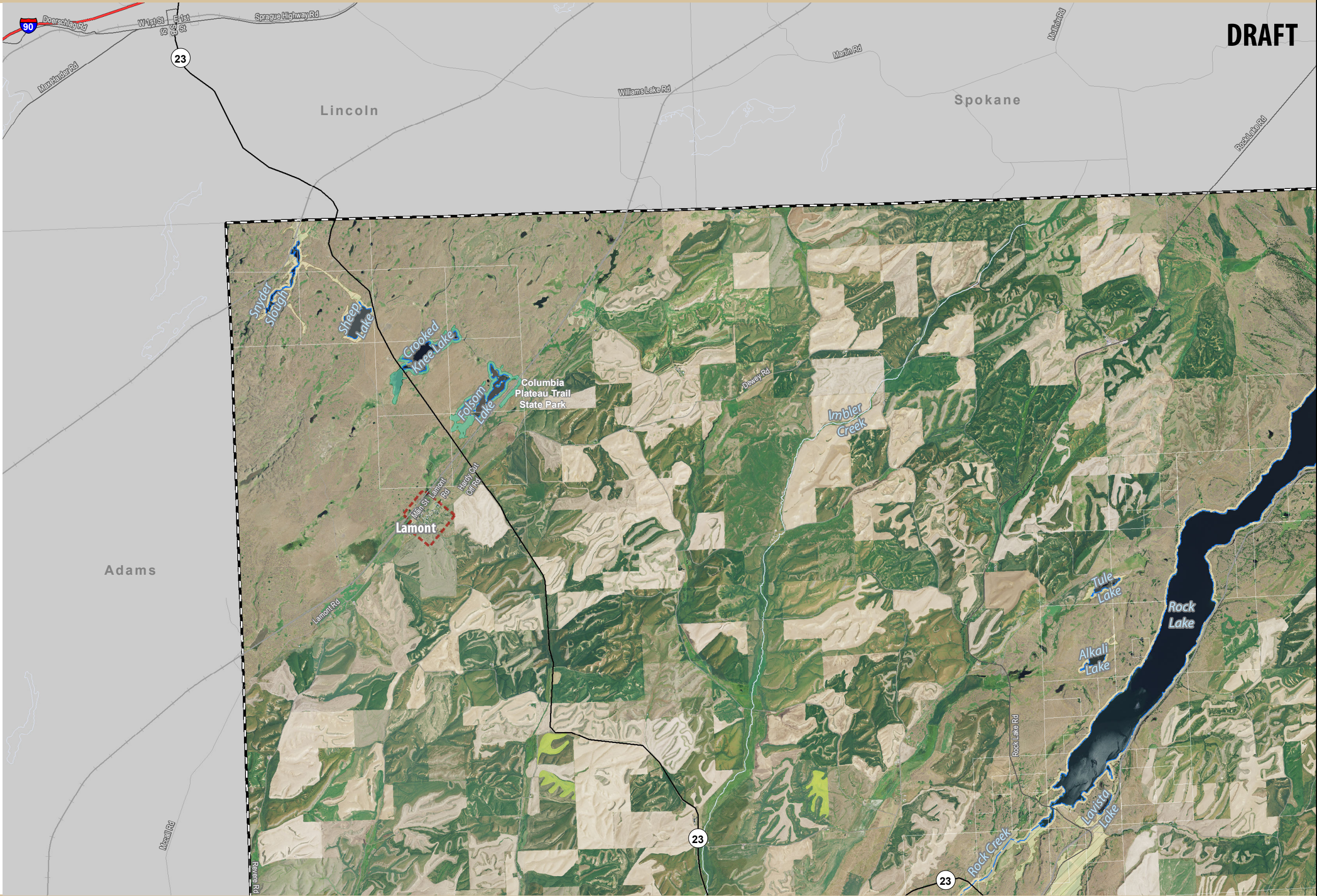
City or Town Limit^{Ecy}

Proposed Environment Designations^{1, 2 TWC}

County

— Natural

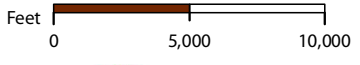
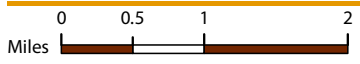
— Rural Conservancy






Notes:

¹ Shoreline areas waterward of the ordinary high water mark (OHWM) are assigned an Aquatic environment designation.

² Details of "Rural Industrial/Port" designated areas can be found on County pages 14 and 15.





Original scale = 1:85,000 @ 11" x 17" layout. *Please scale*



— SMP Stream^{TWC}

— SMP Waterbody^{TWC}

City or Town Limit^{Ec}

Proposed Environment Designations^{1TWC}

County

- Rural Conservancy
- Rural Industrial/Port²
- Urban Conservancy

Notes:

¹ Shoreline areas waterward of the ordinary high water mark (OHWM) are assigned an Aquatic environment designation.

² Details of "Rural Industrial/Port" designated areas can be found on County pages 14 and 15.

0 0.5 1 2 3 4 5

Miles

0 5,000 10,000 20,000 30,000 40,000

Feet



Original scale = 1:262,080 @ 11" x 17" layout. *Please scale*







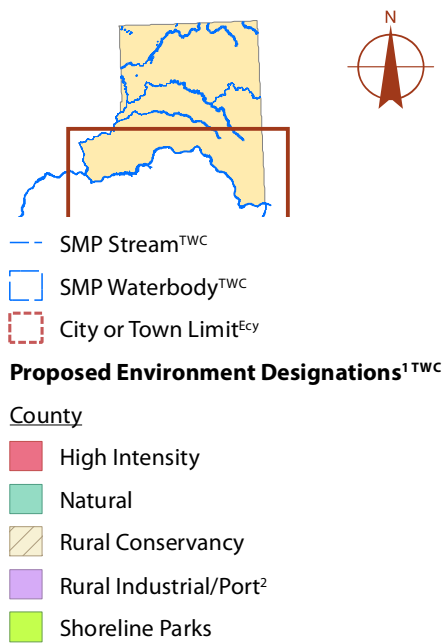
DRAFT

All features depicted on this map are approximate. They have not been formally delineated or surveyed and are intended for planning purposes only. Additional site-specific evaluation may be needed to confirm/verify information shown on this map.

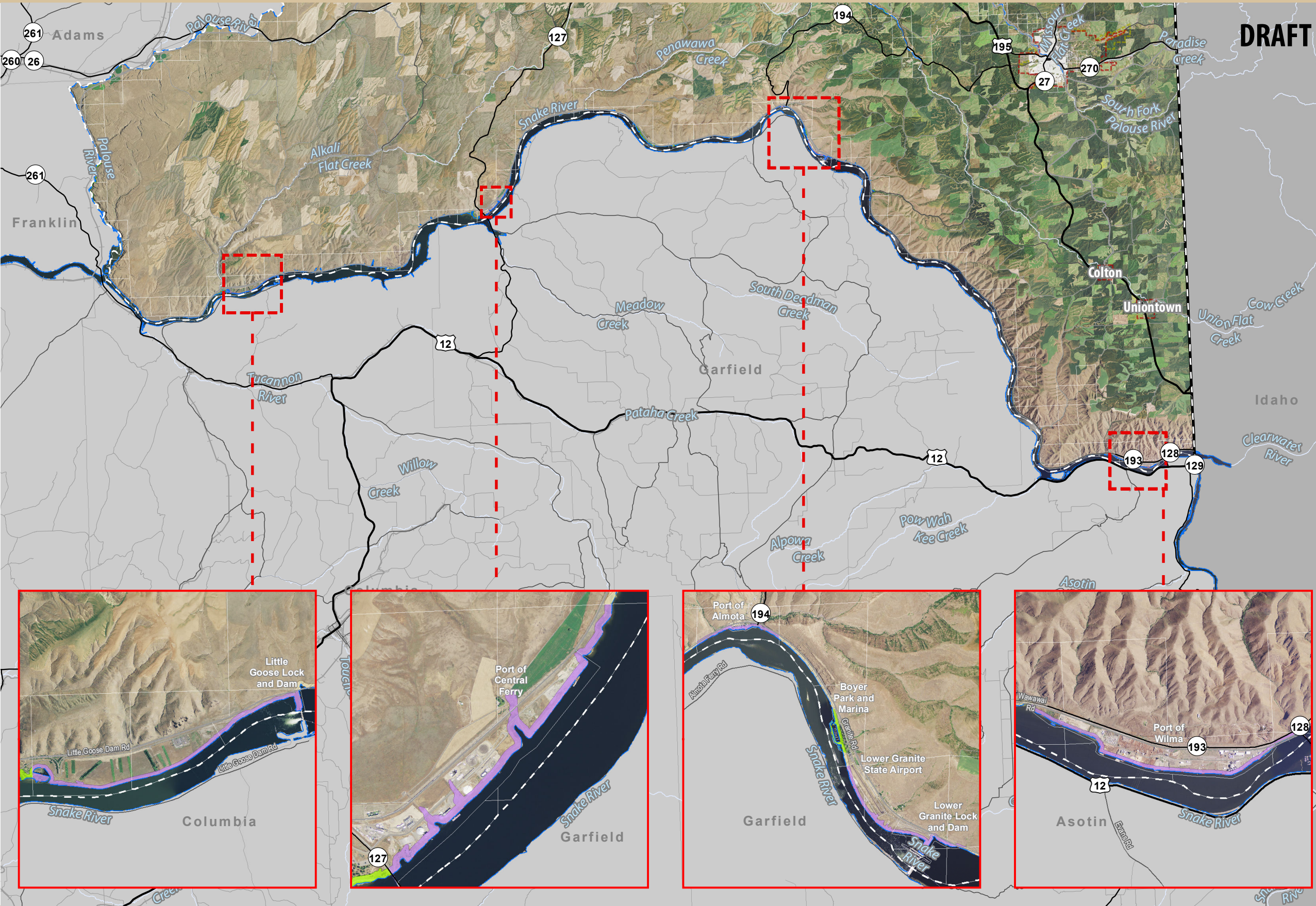
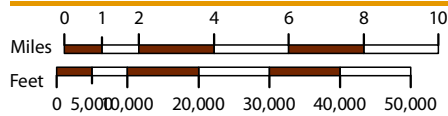
Data Sources (not listed above): Roadways and rail from DOT. Aerial imagery from 2013 USDA NAIP. Source abbreviations are described on the map folio cover sheet.

Proposed Environment Designations

DRAFT



Notes:
¹ Shoreline areas waterward of the ordinary high water mark (OHWM) are assigned an Aquatic environment designation.
² Details of "Rural Industrial/Port" designated areas can be found on County pages 14 and 15.



All features depicted on this map are approximate. They have not been formally delineated or surveyed and are intended for planning purposes only. Additional site-specific evaluation may be needed to confirm/verify information shown on this map.

Data Sources (not listed above): Roadways and rail from DOT. Aerial imagery from 2013 USDA NAIP. Source abbreviations are described on the map folio cover sheet.