
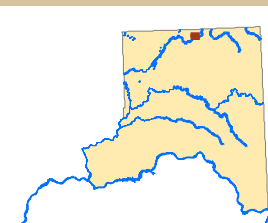


Proposed Environment Designations

Town of Malden



— SMP Stream^{TWC}

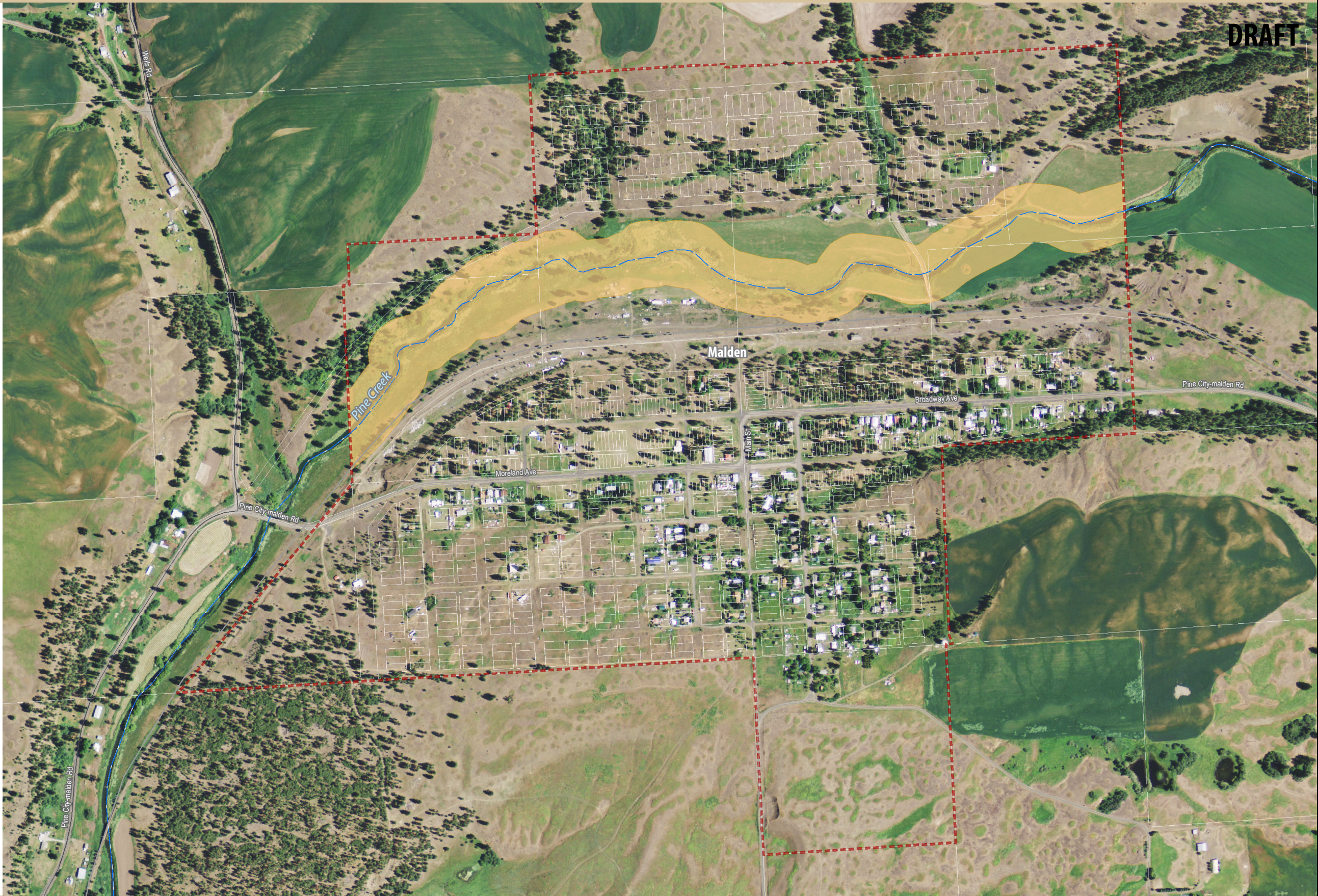
— SMP Waterbody^{TWC}

City or Town Limit^{Ec}

Proposed Environment Designations^{1, 2 TWC}

Town of Malden

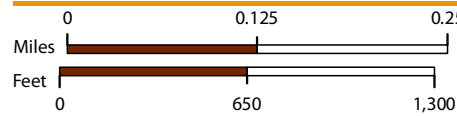
Urban Conservancy



Notes:

¹ Shoreline areas waterward of the ordinary high water mark (OHWM) are assigned an Aquatic environment designation.

² Details of "Rural Industrial/Port" designated areas can be found on County pages 14 and 15.





Original scale = 1:8,000
@ 11" x 17" layout.
Please scale accordingly.



All features depicted on this map are approximate. They have not been formally delineated or surveyed and are intended for planning purposes only. Additional site-specific evaluation may be needed to confirm/verify information shown on this map.

Data Sources (not listed above): Roadways and rail from DOT. Aerial imagery from 2013 USDA NAIP. Source abbreviations are described on the map folio cover sheet.