

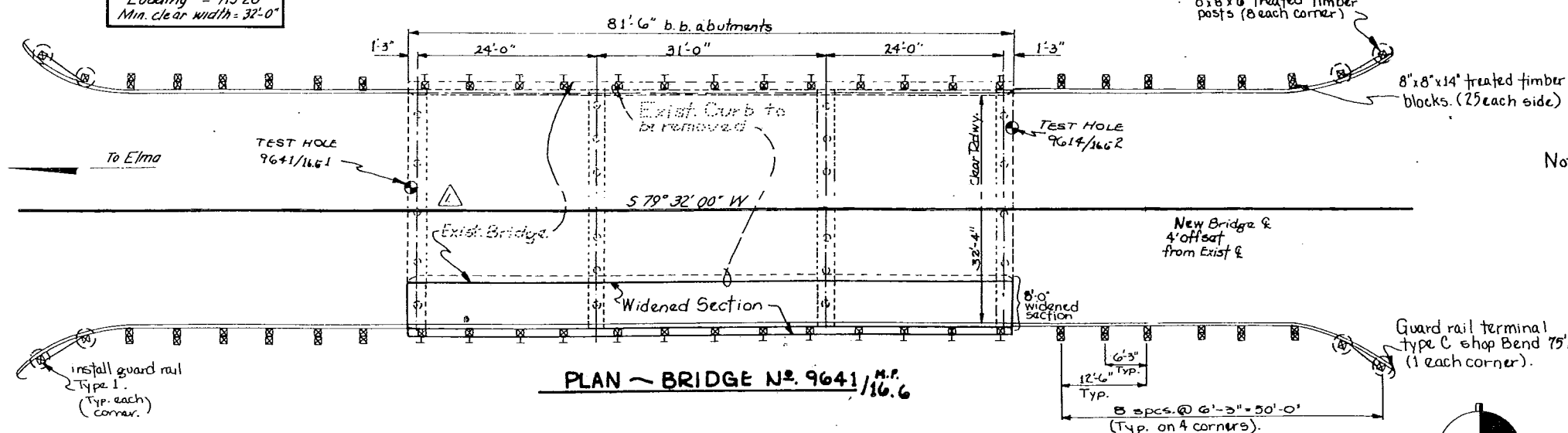
DESIGN CRITERIA

ADT = 900 in 1976

V = 45 MPH

Loading = HS-20

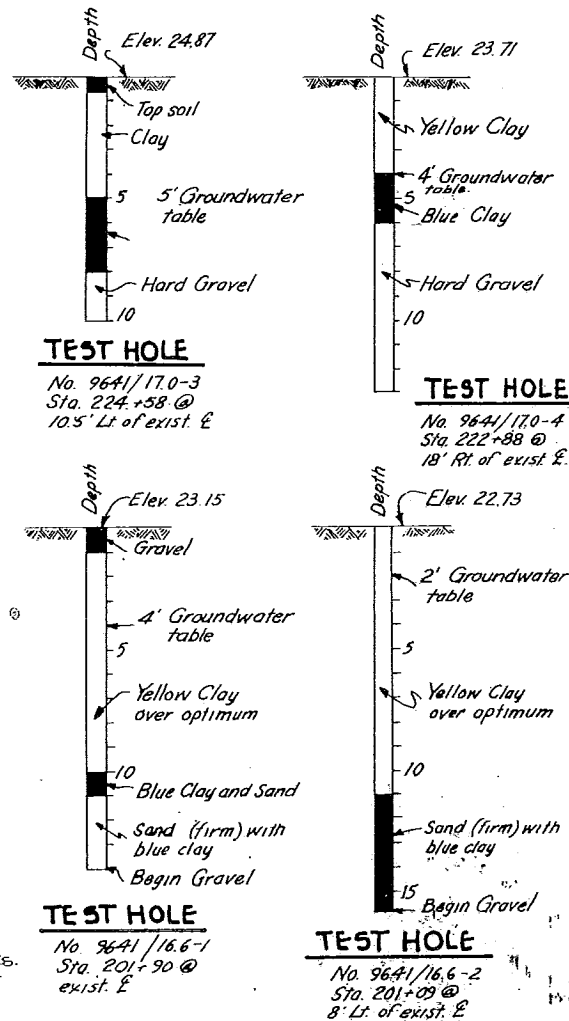
Min. clear width = 32'-0"



Note: Guard rail on the opposite side of the bridge from the widened portion will remain the same except that extra posts will be installed to create a 6'-3" spacing. The existing posts will be repositioned.

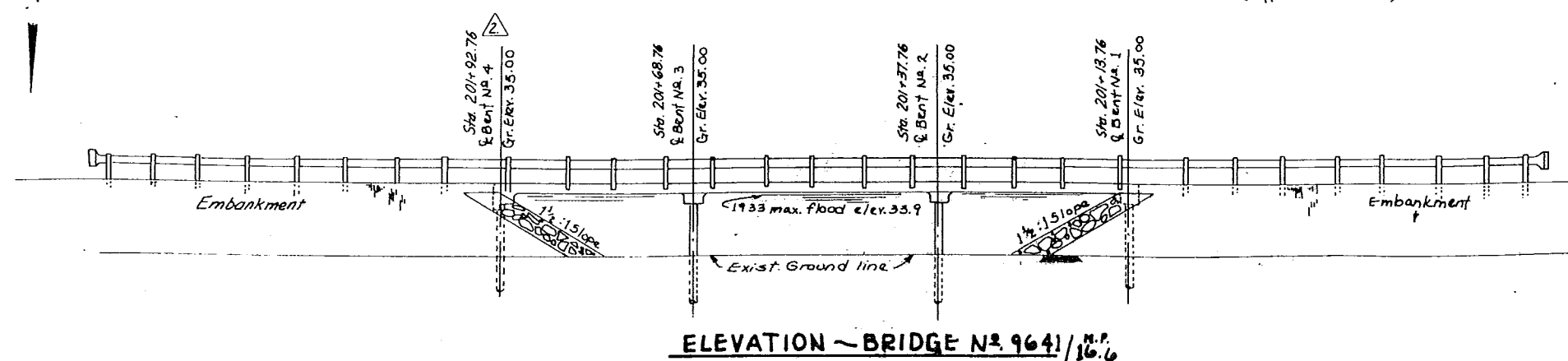
(Typical both bridges)

Note: Test holes drilled in 1963 for construction of existing structures.

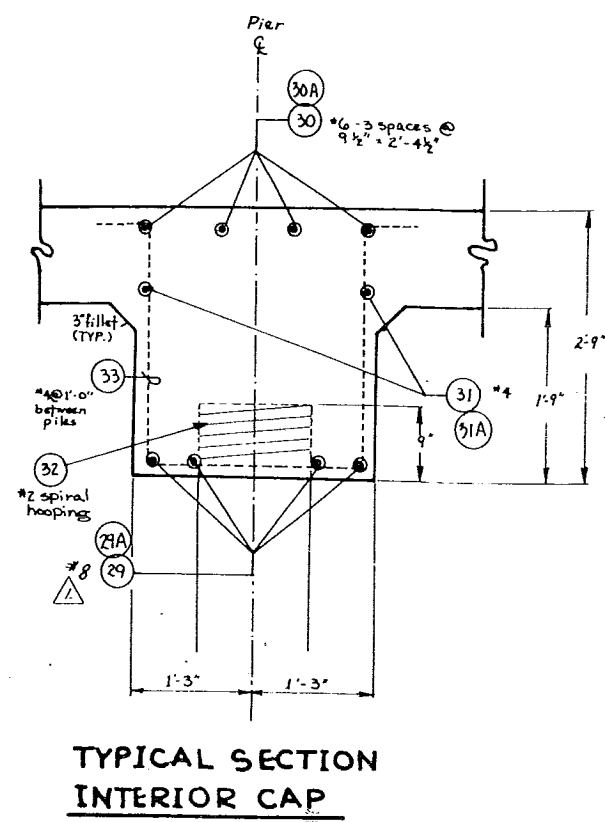
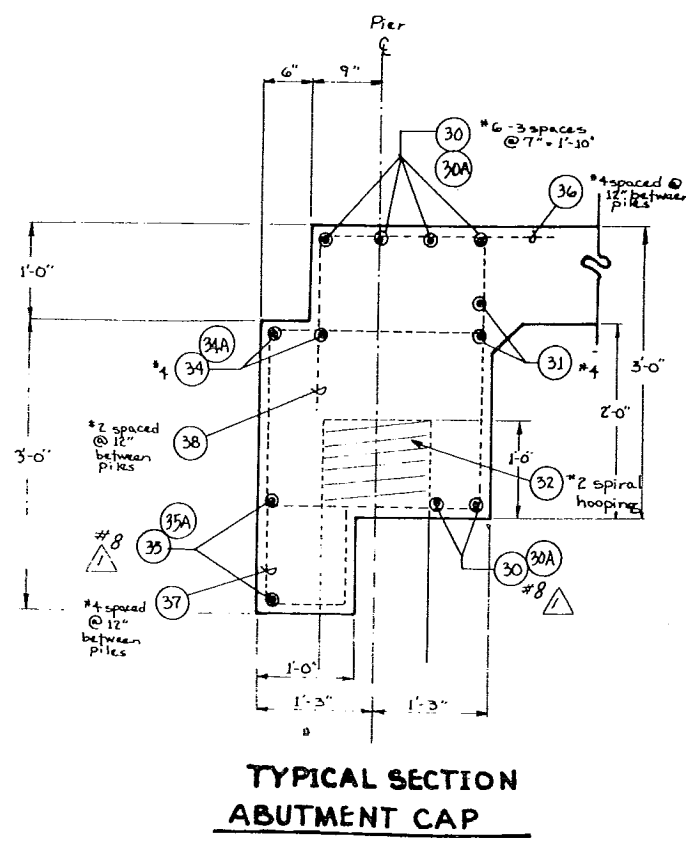
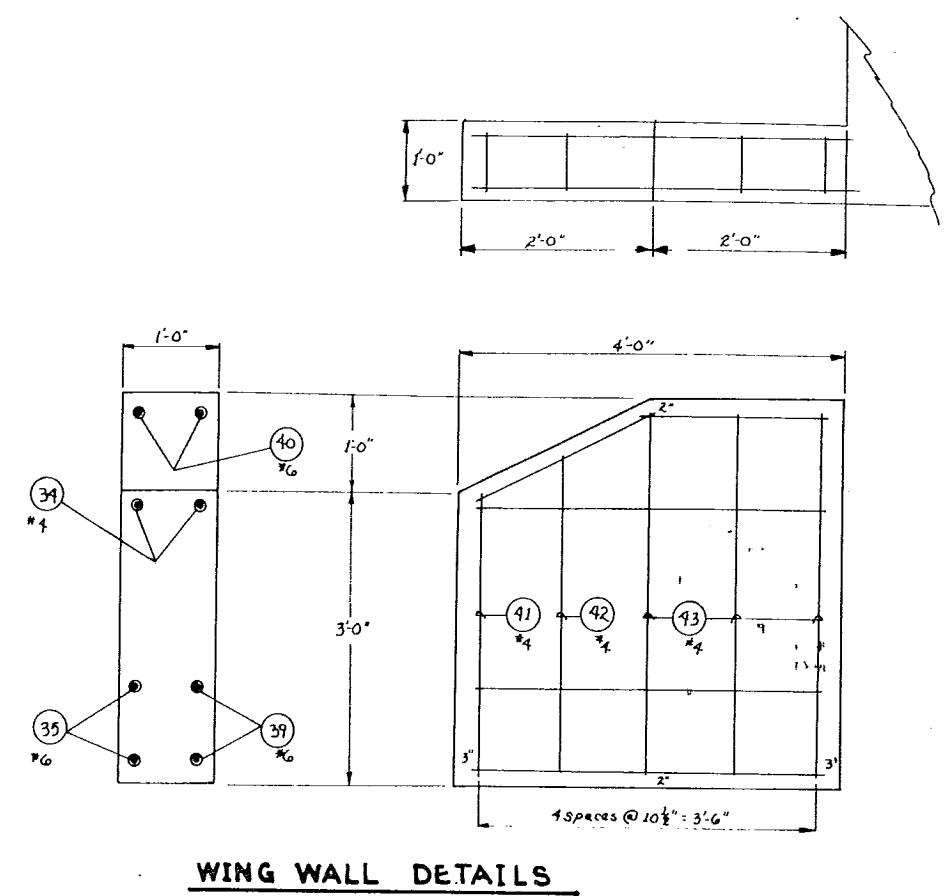
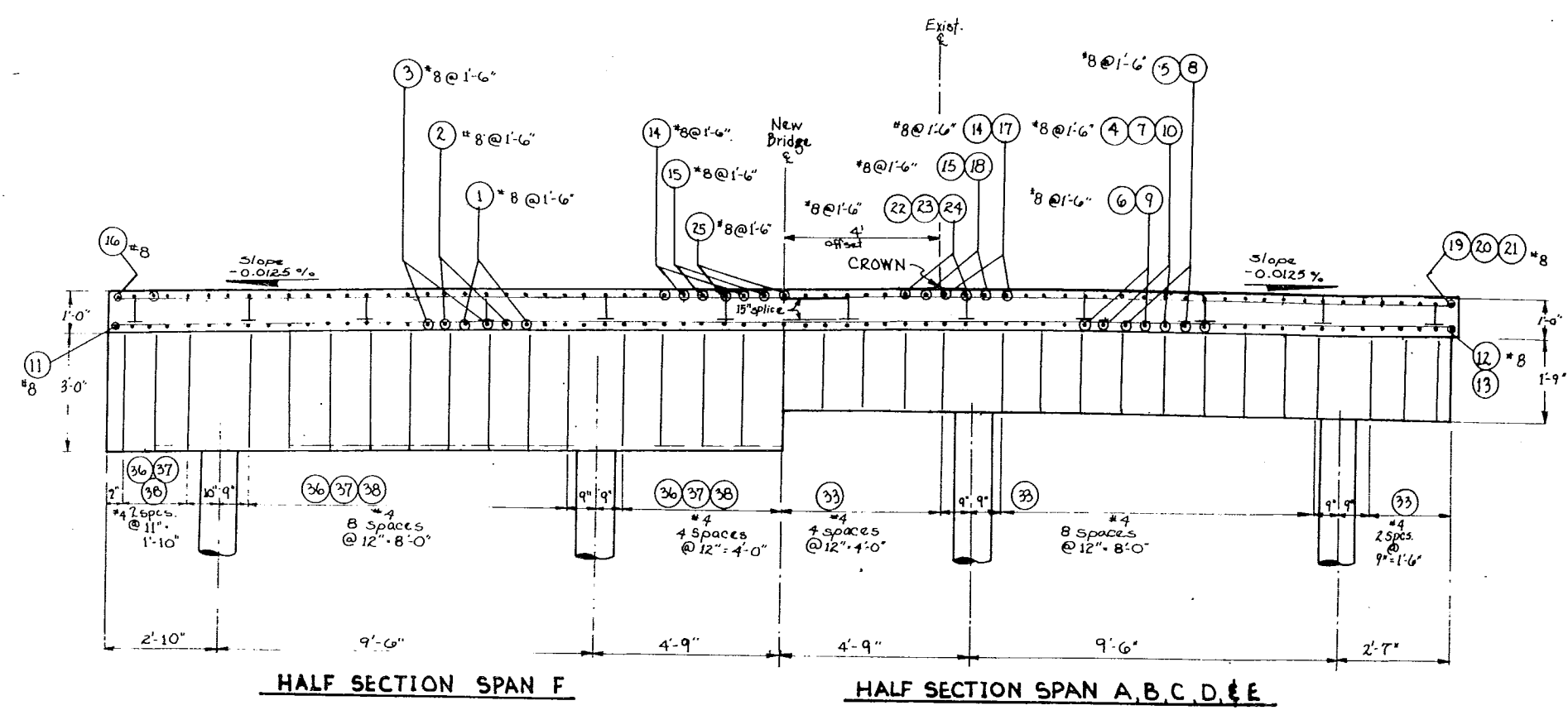


US & GS B.M. - ELEV. 24.35 BOAT SPIKE IN COTTONWOOD

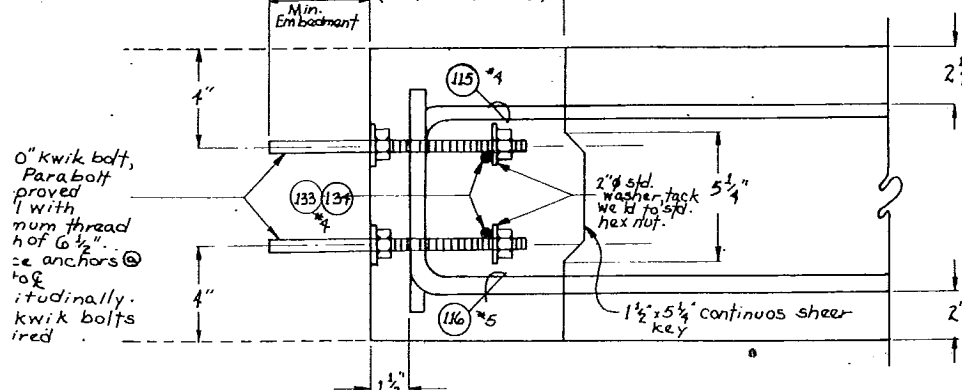
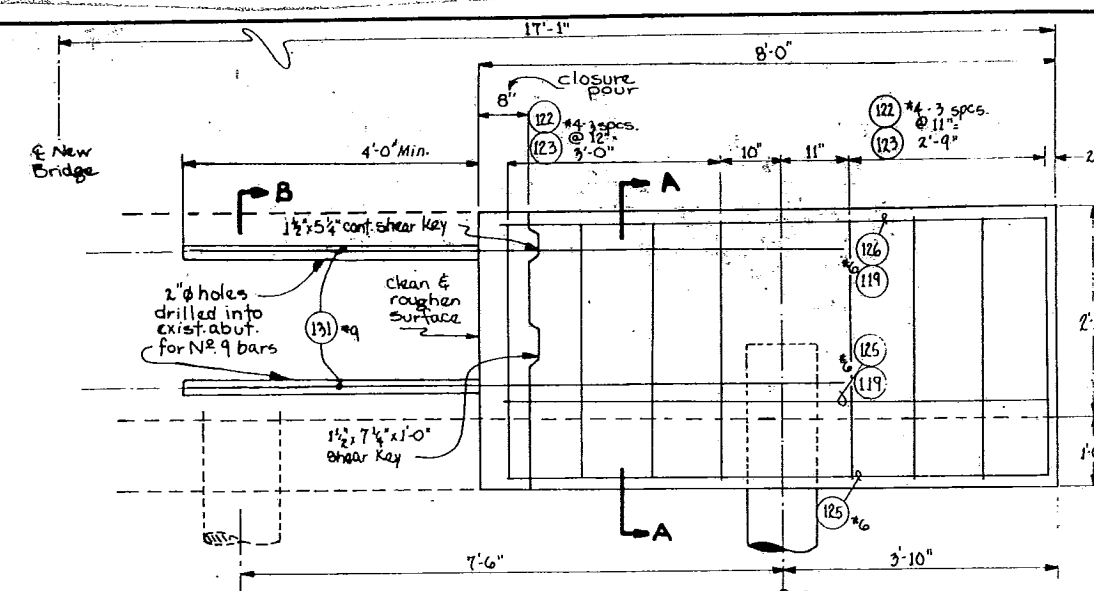
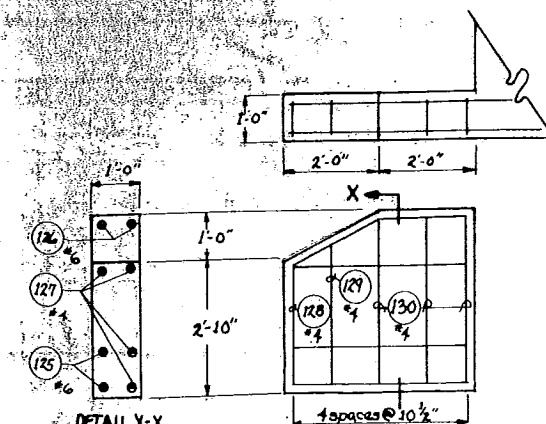
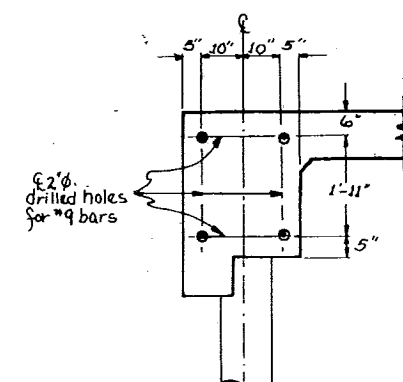
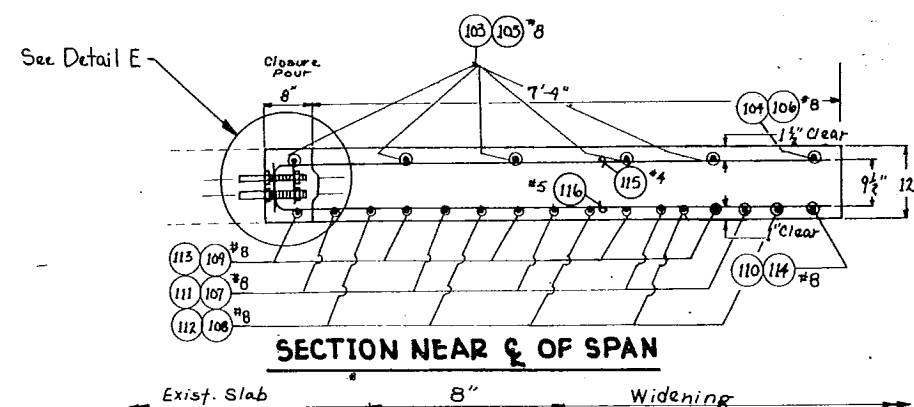
H. 3.-20-LOADING



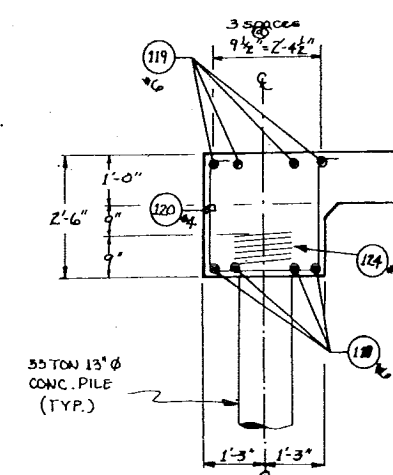
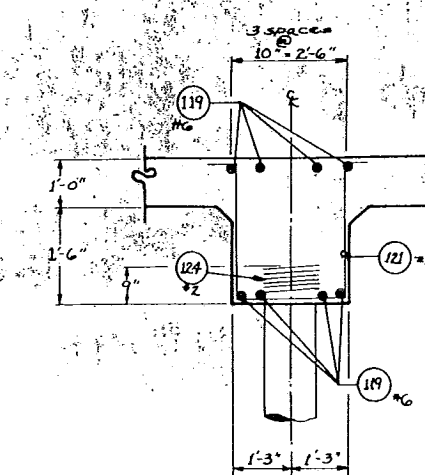
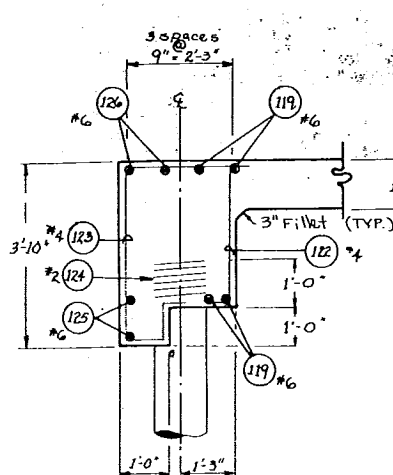
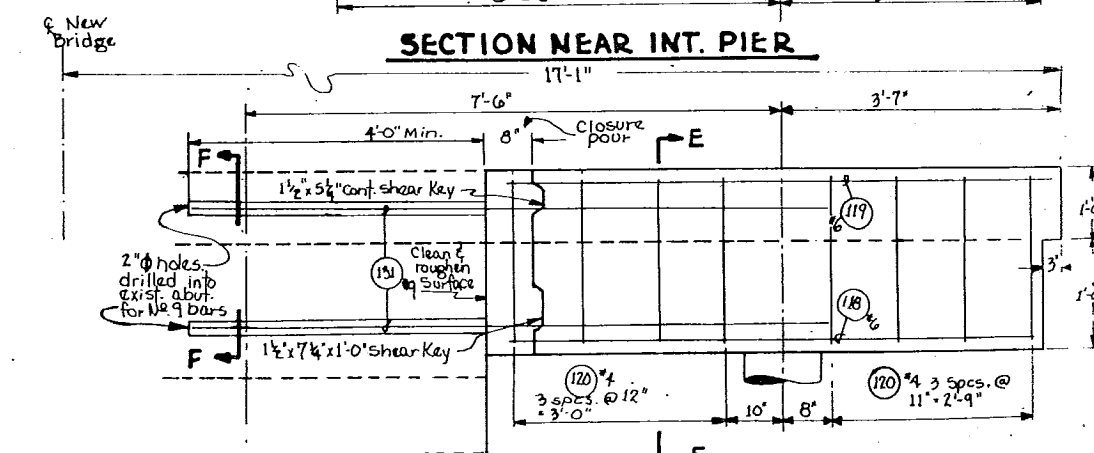
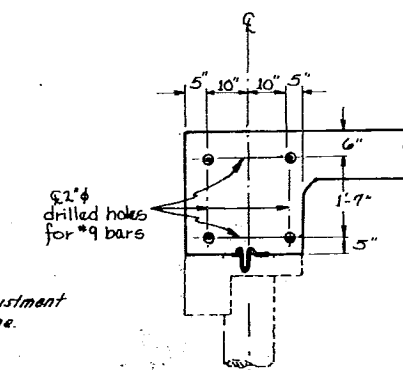
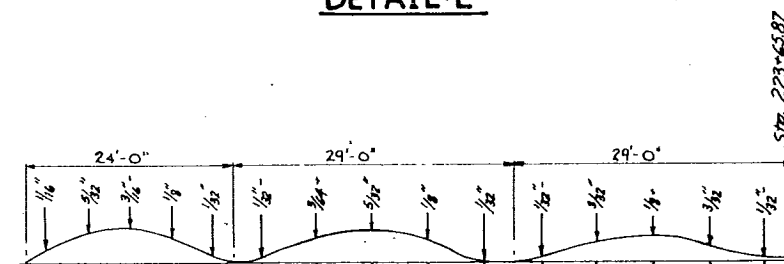
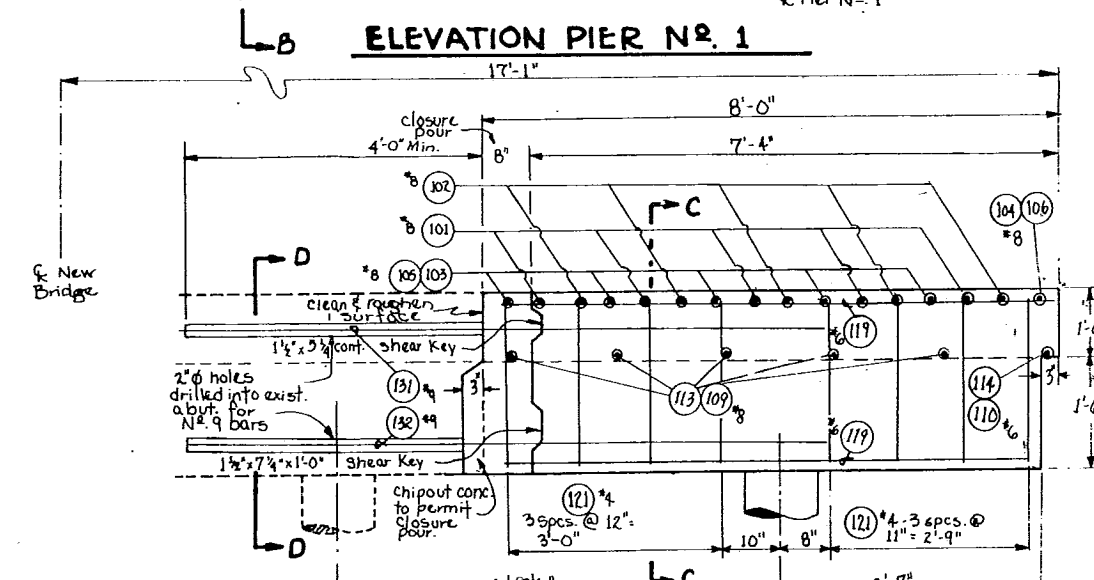
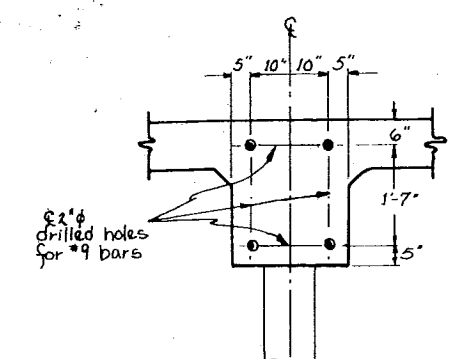
SYN	DESCRIPTION	BY	DATE	APPROV.
1	Revised alignment	E. J. Carroll	4-28-77	L. F. H.
2	Correct stationing at all bents			
REVISIONS				
DEPARTMENT OF PUBLIC WORKS				
DIVISION OF ENGINEERING & CONSTRUCTION				
GRAYS HARBOR COUNTY				
MONTESANO WASHINGTON				
WAKEFIELD ROAD - 96413				
CHEHALIS RIVER OVERFLOW BRIDGES				
LAYOUT-WIDENINGS - BRIDGES 9641/16.6-17.0				
DESIGN	R. E.	DRN	M. D. CO.	CHKD
RECON		L. F. H.		
APPROV				
PROJECT NO. C-96413-10				DRAWING NO.
SHEET 12 OF 20				W-9-4



SYN	DESCRIPTION	DATE	BY	APPRV
1	Change #6 bars to #8 at 12" on center	5/15/12	J.T.H.	
REVISIONS				
DEPARTMENT OF PUBLIC WORKS				
DIVISION OF ENGINEERING & CONSTRUCTION				
GRAYS HARBOR COUNTY				
MONTESANO, WASHINGTON				
<b>WAKEFIELD ROAD #96413</b>				
<b>CHEHALIS RIVER OVERFLOW BRIDGE #9641</b>				
<b>CONSTRUCTION DETAILS II, BRIDGE #9641</b>				
DWG	R.E.	DP	MD	CHKD
DATE	5/15/12	DATE	5/15/12	DATE
APPROV		DATE		DATE
COUNTY ENGINEER	DIR. OF PUBLIC WORKS	SHEET	13 OF 20	W-2-4



NOTE:  
Core drill holes must be  
3\"/>



SYMBOL	DESCRIPTION	DATE	BY	DATE	APPROVED
1	Revise DL Camber data	4-28-77	L.T.H.		
2					
3					
4					
5					
6					
7					
8					
9					
10					
11					
12					
13					
14					
15					
16					
17					
18					
19					
20					
21					
22					
23					
24					
25					
26					
27					
28					
29					
30					
31					
32					
33					
34					
35					
36					
37					
38					
39					
40					
41					
42					
43					
44					
45					
46					
47					
48					
49					
50					
51					
52					
53					
54					
55					
56					
57					
58					
59					
60					
61					
62					
63					
64					
65					
66					
67					
68					
69					
70					
71					
72					
73					
74					
75					
76					
77					
78					
79					
80					
81					
82					
83					
84					
85					
86					
87					
88					
89					
90					
91					
92					
93					
94					
95					
96					
97					
98					
99					
100					



WAKEFIELD ROAD 16413  
CHEHALIS RIVER OVERFLOW BRIDGE  
CONSTRUCTION DETAILS (III) BRIDGE 1641/17-0

DESIGN R.E. DRN M.D. CHKD H.S. SCALE As Shown PROJECT NO. C-96413-10  
RECOMM. DATE 5/22/77  
APPROVED DATE  
SHEET 14 OF 20 W-9-4