



Department of Commerce



Photo: SvR Design

Building Cities in the Rain:

Watershed Prioritization for Stormwater Retrofits

Heather Ballash
Senior Planner

Growth Management Services

March 9, 2016

Overview

1. Growth Management Act, NPDES, and Salmon Recovery
2. Building Cities in the Rain – Watershed Prioritization Guidance
3. Uses of the Guidance



Washington's Growth Management Act



14 Planning Goals include:

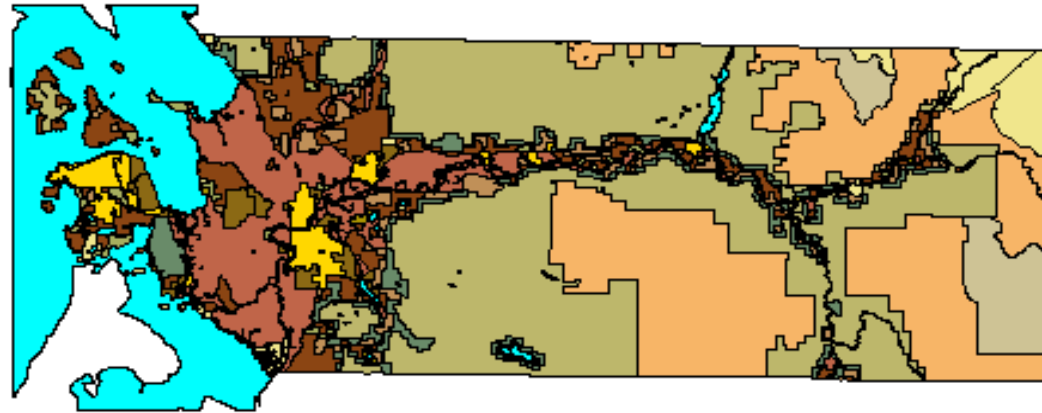
- Encourage urban growth with adequate or planned public facilities and services
- Reduce sprawling, low-density development
- Protect the environment and enhance quality of life, including water quality
- Ensure public facilities and services are adequate to serve development



Washington's Growth Management Act

Counties must designate urban growth areas:

- Within which urban growth shall be encouraged – permit urban densities
- That can accommodate 20-year population and employment projections



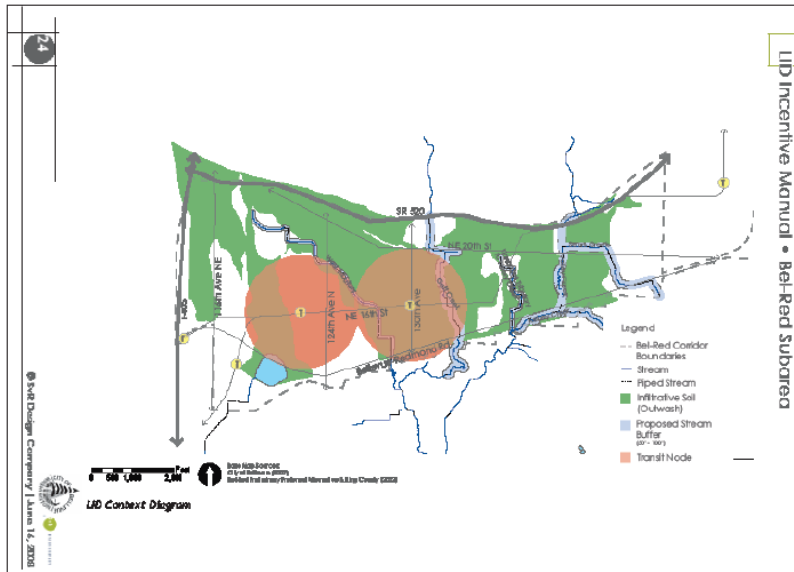
Skagit County Urban Growth Area



Washington's Growth Management Act

City of Bellevue

Bellevue's EIS process looked at stormwater and creeks and how LID could be implemented in the Bel-Red Corridor.



http://www.ci.bellevue.wa.us/bel-red_intro.htm

Comprehensive Plan must include (among other elements):

- Land use element review of stormwater runoff and guidance for corrective actions
- Capital facilities element plan for expanded or new facilities and a six year plan for financing



Department of Commerce

Puget Sound Regional Council: VISION 2040

Jobs & Housing for 1.7 Million More People



2 more Seattles + 2 more Tacomas

Central Puget Sound Region



VISION 2040: Regional Growth Centers

Regional strategy focused on designated centers linked by transit:

29 Regional Growth Centers

- 2.5% of total UGA (≈ 25 sq mi)
- Currently 29% of region's jobs

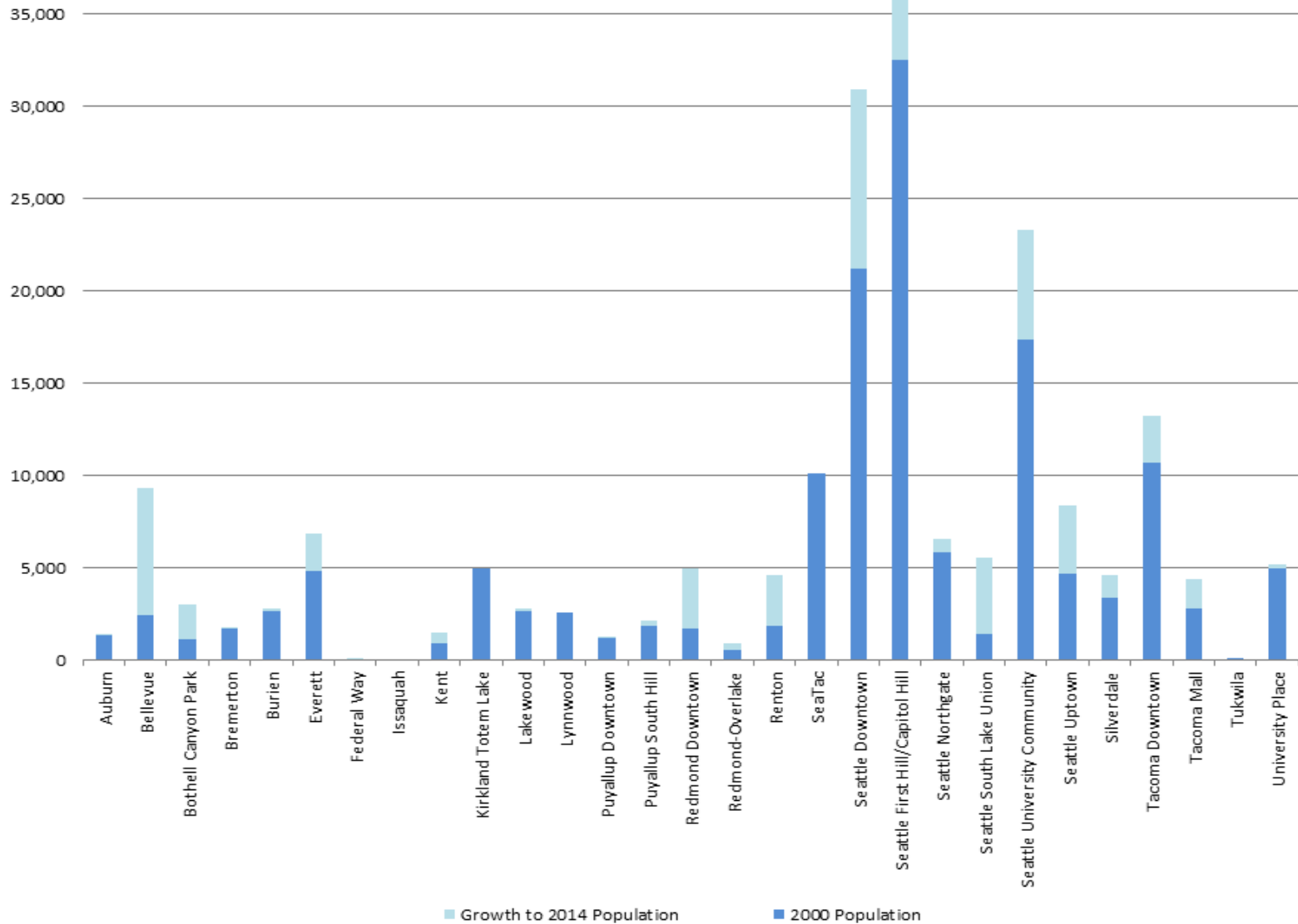
8 Manufacturing/Industrial Centers

- 3.7% of total UGA area



Regional Growth Centers Population Change

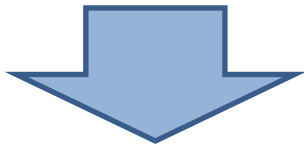
Total Population Change 2000 - 2014



Puget Sound Regional Council

“NPDES v. GMA”

NPDES v. GMA: Stormwater regulations are often more costly in ultra-urban areas than in green-fields.



NPDES & GMA/Regional Growth Strategy: How to encourage development in designated urban centers and manage stormwater effectively?



NPDES and Urban Infill Redevelopment

Before: little or no water quality and flow controls, pollutant generating impervious surface



Photo by A. Easton

After: less impervious surface and some green infrastructure, little or no pollutant generating impervious surface



Photo by Brett VA



NPDES and Salmon Recovery

Waiting for redevelopment:

- Based on market forces and not highest-priority watersheds
- Not enough funding to retrofit all watersheds in the immediate future
- Public investment is not targeted to high-priority watersheds
- No opportunity to leverage funding for habitat restoration



Tacoma Mall Subarea



Puget Sound Action Agenda

Commerce Near Term Action A1.2.1:

“Land Use Planning Barriers, BMPs and Example Policies”: address barriers to policies that encourage compact growth, increased density, water quality standards, redevelopment.....”

South Central LIO Near Term Action SC13: “Develop recommendations for incentives and cost effective tools to meet stormwater management and GMA ... to encourage infill... in urban centers instead of greenfield... and to improve water quality.”



Desired Outcome = Vibrant Designated Urban Centers + Clean Water + Restored Fish Habitat



Photo: SvR Design



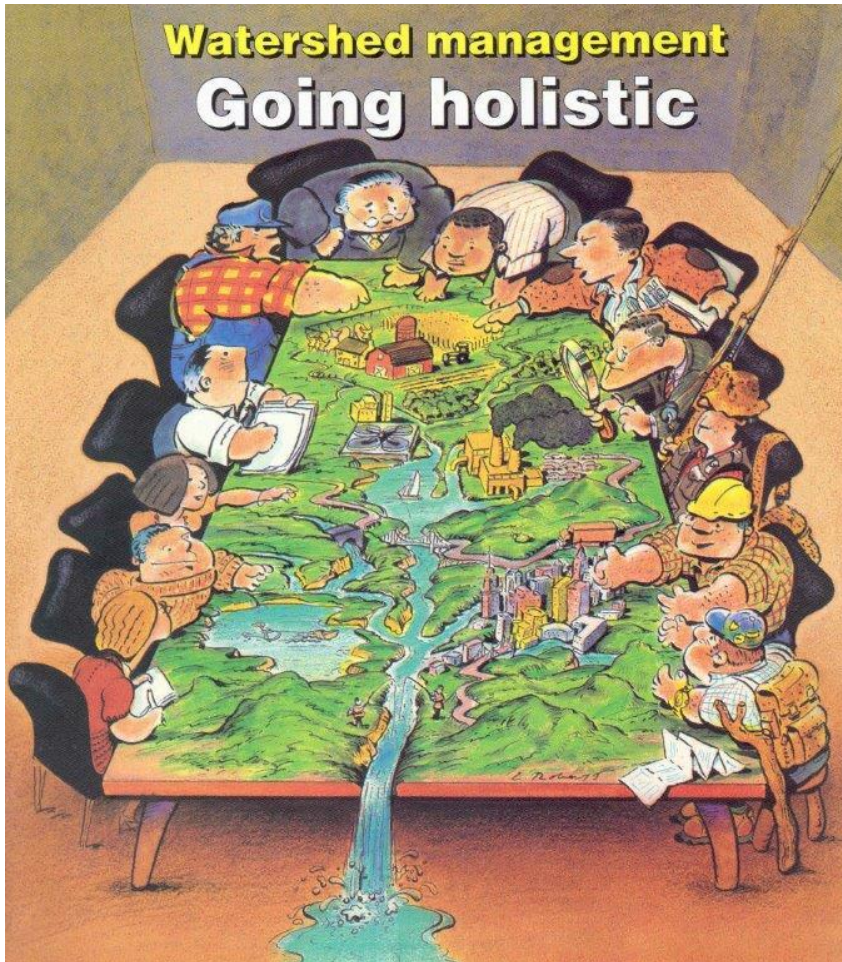
Department of Commerce

Building Cities in the Rain

Watershed Prioritization for Stormwater Retrofit Investment



Building Cities in the Rain Work Group



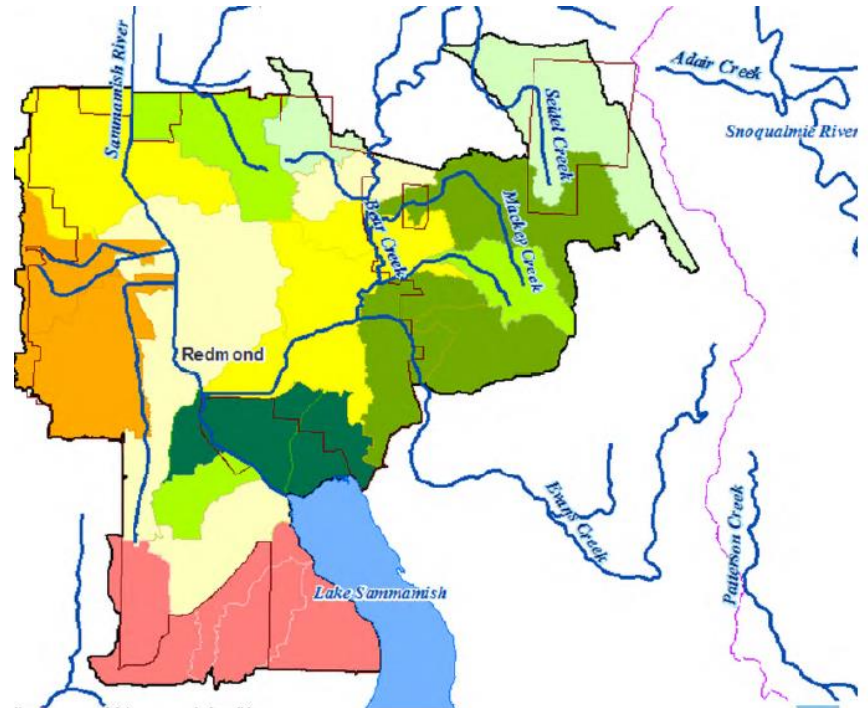
Tacoma Issaquah
Redmond Bellevue
King County Thurston County
Futurewise Ecology
WDFW WRIA 8
EPA Commerce
Puget Sound Regional Council
Puget Sound Partnership



Department of Commerce

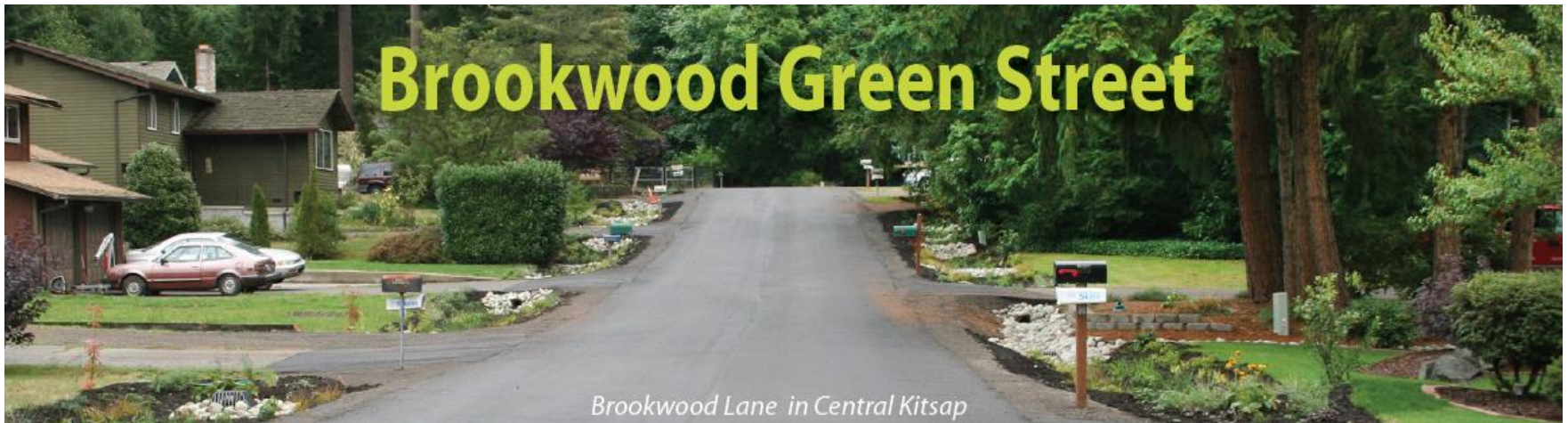
Process and Data for Prioritizing Watersheds

1. Establish prioritization goals/policies.
2. Review regional-scale information as initial screen.
Refine with local data.
3. Seek input from stakeholders (tribes, resource agencies, your neighbors)
4. Plan for stormwater retrofits where expected to accelerate environmental improvement



Local Policies for Water Resources/Stormwater

- Kitsap County's "Water as a Resource" policy
- Redmond's Natural Element Policies re water quality and surface waters



Puget Sound Watershed Characterization



http://www.ecy.wa.gov/puget_sound/characterization/



Department of Commerce

Stepwise Analytical Process Recommended



Use local data to refine watershed prioritization:

Step 1 – Review receiving waterbodies/waters in the watershed for actual or potential fish use.

Step 2 – Give priority where stormwater improvements are expected to accelerate environmental improvement

Step 3 – If desired, consider Environmental Justice/Social Equity issues



Department of Commerce

Uses for Watershed Prioritization

- Targeting stormwater control investment for regional facilities – early planning for capital facilities
- Prioritizing project proposals for grants
- Informing water clean up plans (TMDL)
- Establishing a stormwater control transfer program




Photo: SvR Design



Draft Watershed Prioritization Guidance

To view the guidance: www.ezview.wa.gov
Comments due April 30, 2016



Building Cities in the Rain

[Portal ID #1780]

[Overview](#) [Contacts](#) [Events](#) [Library](#) [2013 Meetings](#) [2014 Meetings](#) [2015 Meetings](#)

Building Cities in the Rain: Watershed Prioritization Guidance for Stormwater Retrofits

The Department of Commerce, in consultation with a work group of interested parties, has developed a draft [Building Cities in the Rain](#) guidance that describes a process for prioritizing watersheds for stormwater retrofits. It is intended to provide a tool for local governments to target investment in stormwater retrofits in a way that leverages opportunities for salmonid habitat restoration and facilitates redevelopment in urban centers. The Building Cities in the Rain guidance describes a four-step watershed prioritization process for stormwater retrofits. The guidance was released on March 1, 2016. **The draft guidance is available for public comment until midnight on April 30, 2016.**

[Click here](#) for the draft guidance.

Please submit comments by email to:
Heather Ballash at heather.ballash@commerce.wa.gov

Submit written, hard copy comments to:
Heather Ballash
Growth Management Services
Washington State Department of Commerce
PO Box 42525
Olympia, WA 98504-2525



Department of Commerce



Department of Commerce

Presented by:

Heather Ballash

Senior Planner

(360) 725-3044

heather.ballash@commerce.wa.gov

www.commerce.wa.gov

facebook

twitter