

# CHEHALIS-CENTRALIA AIRPORT PUMP STATION REBUILD

## CHEHALIS, WASHINGTON CITY PROJECT NUMBER XX

MAY 2016

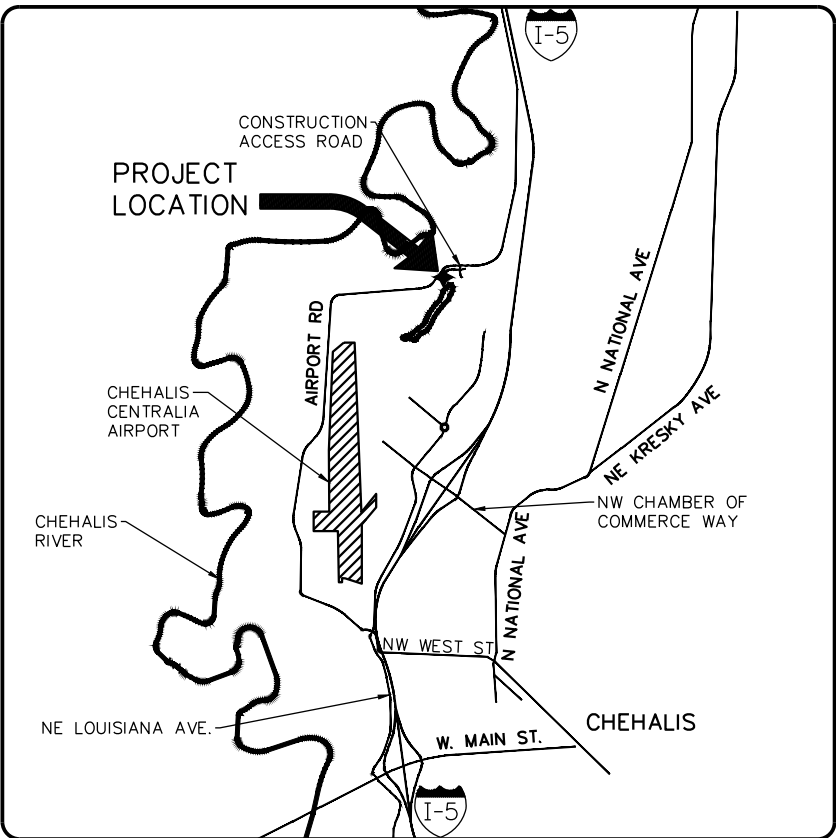
**MAYOR**  
DENNIS DAWES

**CITY COUNCIL**  
TERRY HARRIS  
TONY KETCHUM  
DARYL LUND  
DR.ISAAC POPE  
ROBERT SPAHR  
CHAD TAYLOR

**PUBLIC WORKS DIRECTOR**  
RICK SAHLIN

**STREET/STORMWATER SUPERINTENDENT**  
DON SCHMITT

**AIRPORT MANAGER**  
DAVID FLECKENSTEIN



### VICINITY MAP

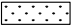




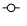
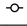
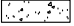

NOT TO SCALE

SHEET INDEX	
SHT #	SHEET DESCRIPTION
1	COVER
2	LEGEND & SYMBOLS
3	SUMMARY OF QUANTITIES
4	DEMOLITION & TESC PLAN
5	DEMOLITION & TESC DETAILS
6	EXISTING SITE PLAN
7	PUMP STATION SITE PLAN
8	PUMP STATION FLOOR PLAN
9	PUMP HOUSE CROSS-SECTION
10	GENERATOR CROSS SECTION
11	PUMP ELEVATIONS
12	PUMP HOUSE ELEVATIONS & TRASH RACK DETAIL
13	48IN CULVERT TRASH RACK DETAIL
14	CHAIN LINK GATE DETAIL
15	CHAIN LINK FENCE DETAIL

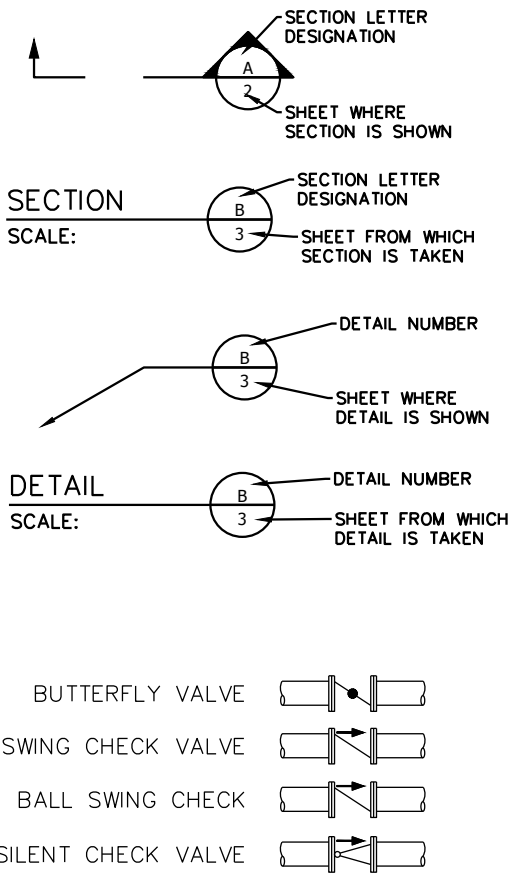


5016 Lacey Boulevard SE, Lacey, WA 98503  
Ph: (360) 491-3399 web: skillings.com

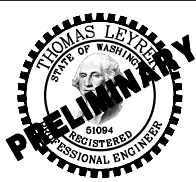
LEGEND:

	EXISTING	PROPOSED
EDGE OF WATER	— EOW — — —	
ORDINARY HIGH WATER	— OHW — — —	
CENTERLINE	— — — — —	
FENCE	— x — x — x —	— — — — — x — — — — —
SILT FENCE		— SF — — — — —
EDGE OF PAVEMENT (EOP)	— EP — — — — —	
EDGE OF GRAVEL	— — — — —	— — — — —
CONCRETE	— — — — —	
RETAINING WALL		— — — — —
TOE OF SLOPE	— — — — —	— — — — —
TOP OF SLOPE	— — — — —	— — — — —
CONTOUR MAJOR	— — — — —	— — — — —
CONTOUR MINOR	— — — — —	— — — — —
SANITARY SEWER	— SS — — — — —	— — — — — SS — — — — —
STORM LINE	— SD — — — — —	— — — — — SD — — — — —
FOOTING DRAIN		— — — — — FD — — — — —
WATER LINE	— W — — — — W — — — —	— — — — — W — — — — —
BURIED PHONE LINE	— BT — — — — —	— — — — — BT — — — — —
OVERHEAD POWER	— OHP — — — — —	— — — — — OHP — — — — —
FIBER OPTIC	— BF — — — — —	
WETLAND	— WL — — — — —	
WETLAND BOUNDARY	— WLB — — — — —	
WETLAND AREA		
DECIDUOUS TREE		
JUNCTION BOX		
POWER POLE		
CONCRETE		
GRAVEL		
FLANGE	FL	
PLAIN END	PE	

SECTION AND DETAIL DESIGNATIONS



	DATE		NO.	DATE	REVISIONS
DESIGNED BY:	04-18-16				
ENTERED BY: J. HNATISHIN	04-18-16				
CHECKED BY:					
PROJ. ENGR.: T. LEYRER	04-18-16				
Plotted By: John Hnatishin on 5/12/16 4:22 PM					
G:\Project\2015\15210 Chehalis Airport Pump Station\CAD\Drawings\Construction\Production\15210_LEGEND & SYMBOLS.dwg Mlopez 5/12/16 4:22 PM					



**SKILLINGS CONNOLLY**

5016 Lacey Boulevard SE, Lacey, WA 98503  
Ph.: (360) 491-3399 www.skillings.com

CHEHALIS-CENTRALIA AIRPORT  
PUMP STATION REBUILD

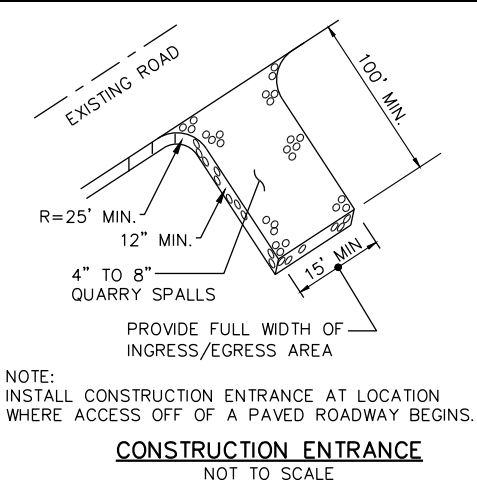
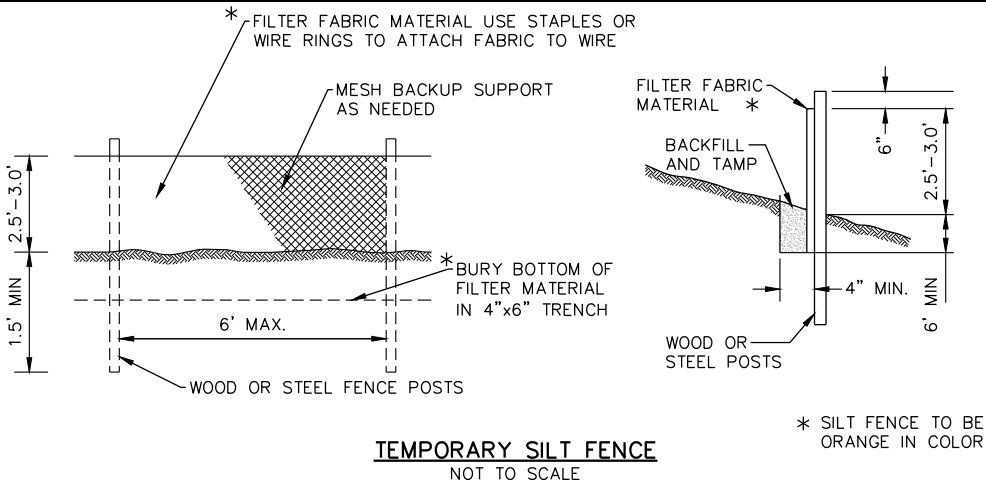
LEGEND & SYMBOLS

SUMMARY OF QUANTITIES

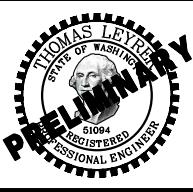


TEMPORARY EROSION AND SEDIMENT CONTROL NOTES:

1. EROSION CONTROL MEASURES WILL BE IN PLACE PRIOR TO THE BEGINNING OF CONSTRUCTION. A REPRESENTATIVE FROM THE CITY WILL INSPECT AND APPROVE THE EROSION CONTROL MEASURES PRIOR TO THE START OF CONSTRUCTION.
2. EROSION CONTROL MEASURES ARE NOT LIMITED TO THE ITEMS ON THIS PLAN. THE CONTRACTOR IS RESPONSIBLE FOR THE INSTALLATION AND MAINTENANCE OF ALL EROSION MEASURES, AS REQUIRED UNDER THE MOST RECENT VERSION OF THE CHEHALIS STORM WATER MANAGEMENT PLAN. CARE WILL BE TAKEN TO PREVENT MIGRATION OF SILT AND/OR POLLUTED RUNOFF TO OFF-SITE PROPERTIES.
3. THE CONTRACTOR WILL MAKE REGULAR SURVEILLANCE OF ALL EROSION CONTROL MEASURES. IN ADDITION, EROSION CONTROL WILL BE THOROUGHLY INSPECTED AFTER EACH RAINFALL EVENT. THE CONTRACTOR WILL MAKE ALL NECESSARY REPAIRS, MODIFICATIONS, AND ADDITIONS AS NECESSARY TO ENSURE THE PROPER OPERATION OF THE EROSION CONTROL MEASURES. THE CITY MAY REQUIRE MORE FREQUENT INSPECTIONS OF EROSION CONTROL MEASURES BY THE CONTRACTOR SHOULD SITE OR WEATHER CONDITIONS DICTATE.
4. DURING THE WET SEASON, NOVEMBER THROUGH MARCH, ALL DISTURBED SOILS WILL BE STABILIZED WITHIN 48 HOURS AFTER LAND DISTURBANCE ACTIVITIES HAVE CEASED. EROSION CONTROL MEASURES WILL INCLUDE, BUT ARE NOT LIMITED TO, INSTALLATION OF STRAW MATTING, JUTE MATTING, STRAW MULCH AND/OR WOOD CHIPS, AND COVERING THE AFFECTED AREA AND SPOIL PILES WITH PLASTIC SHEETING.
5. THE CONTRACTOR WILL CHECK ALL SEEDED OR SODDED AREAS REGULARLY TO ENSURE THAT THE VEGETATIVE COVER IS BEING ADEQUATELY ESTABLISHED. AREAS WILL BE REPAIRED, RESEDED, AND FERTILIZED AS REQUIRED.
6. TRACKING OF SOIL OFF SITE WILL NOT BE ALLOWED. IF ANY SOIL IS TRACKED BEYOND THE LIMITS OF THE SITE, IT WILL BE REMOVED BEFORE THE END OF THAT WORKING DAY. TO PREVENT ADDITIONAL TRACKING, VEHICLE TIRES MUST BE SWEEPED OR WASHED PRIOR TO LEAVING THE PROJECT SITE.
7. NO MORE THAN 500 LINEAL FEET (LF) OF TRENCH ON A DOWN SLOPE OF MORE THAN FIVE PERCENT WILL BE OPENED AT ONE TIME.
8. EXCAVATED MATERIAL WILL BE PLACED ON THE UPHILL SIDE OF TRENCHES.
9. EXCAVATED MATERIAL WILL NOT BE PLACED IN ESTABLISHED DRAINAGE DITCHES UNDER ANY CIRCUMSTANCES.
10. TRENCH DEWATERING DEVICES WILL BE DISCHARGED IN A MANNER THAT WILL NOT ADVERSELY AFFECT FLOWING STREAMS, DRAINAGE SYSTEMS, OR OFF-SITE PROPERTIES. AN ESTABLISHED SEDIMENT TRAP WILL BE USED AS THE RECEIVER FOR ALL TRENCH DEWATERING OPERATIONS.
11. ALL DISTURBED AREAS WILL BE SEEDED OR SODDED UPON COMPLETION OF WORK. THE CONTRACTOR WILL BE RESPONSIBLE TO ENSURE THAT COMPLETE COVERAGE OF THE DISTURBED AREAS IS PROVIDED AND THAT GROWTH OF VEGETATION IS ESTABLISHED. SEED AND SOD APPLICATIONS WILL BE CONDUCTED IN ACCORDANCE WITH THE TIMELINES NOTED IN THE MOST RECENT EDITION OF THE WSDOT STANDARD SPECIFICATIONS.
12. ALL EROSION CONTROL WILL REMAIN IN PLACE UNTIL SUCH TIME AS THE SITE IS ADEQUATELY STABILIZED. PRIOR TO REMOVAL OF EROSION CONTROL MEASURES, THE ENGINEERING DIVISION WILL BE NOTIFIED FOR FINAL INSPECTION AND APPROVAL.



	DATE	REVISIONS		
DESIGNED BY:	04-18-16	NO.	DATE	
ENTERED BY: J. HNATISHIN	04-18-16			
CHECKED BY:				
PROJ. ENGR.: T. LEYRER	04-18-16			
Plotted By: John Hnatishin on 5/12/16 4:23 PM				
G:\Project\2015\15210 Chehalis Airport Pump Station\CAD\Drawings\Construction\Production\15210_DEMOLITION & TESC DETAILS.dwg Mlopez 5/10/16 3:32 PM				



**SKILLINGS  
CONNOLLY**

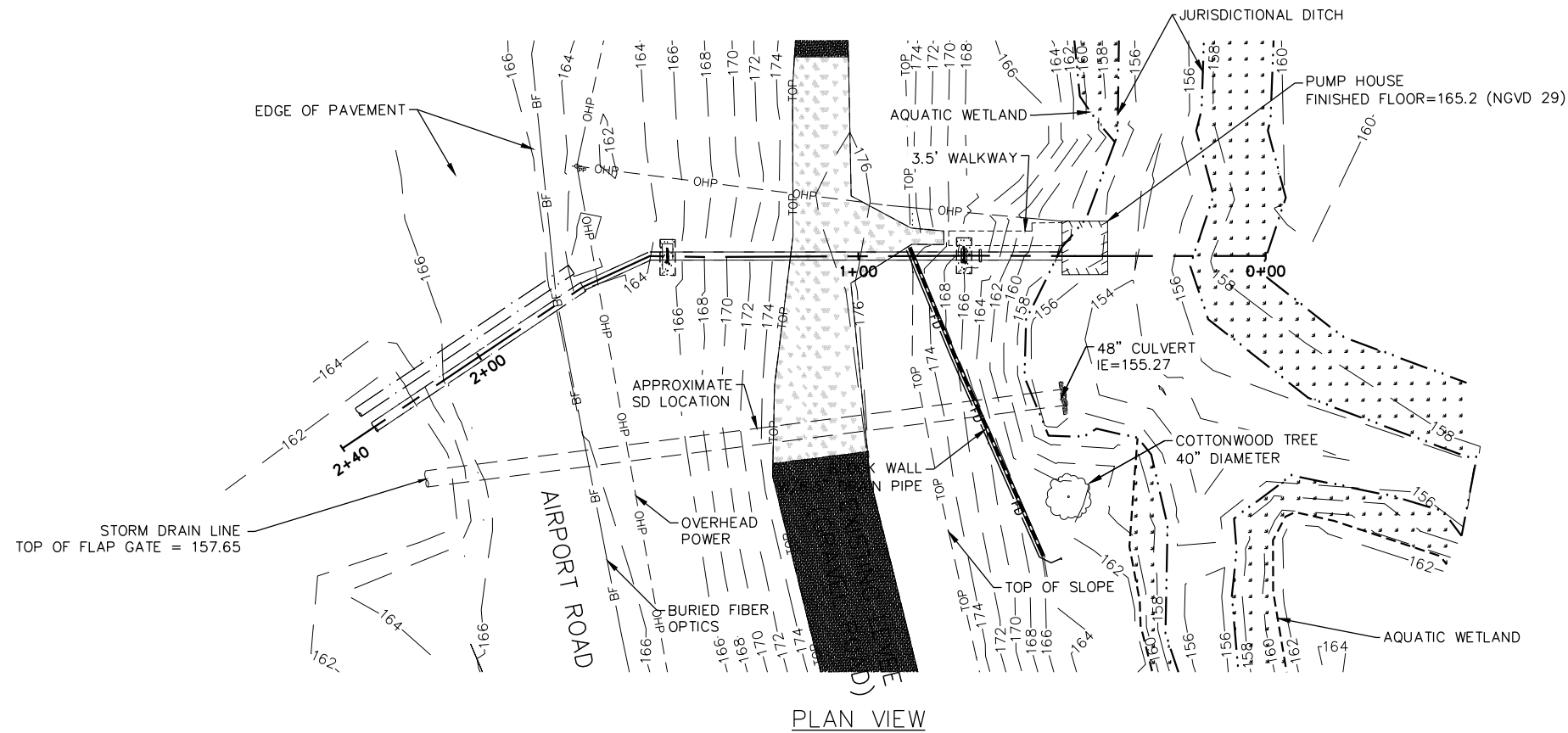
5016 Lacey Boulevard SE, Lacey, WA 98503  
Ph.: (360) 491-3399 [www.skillings.com](http://www.skillings.com)

CHEHALIS-CENTRALIA AIRPORT  
PUMP STATION REBUILD

DEMOLITION & TESC  
DETAILS

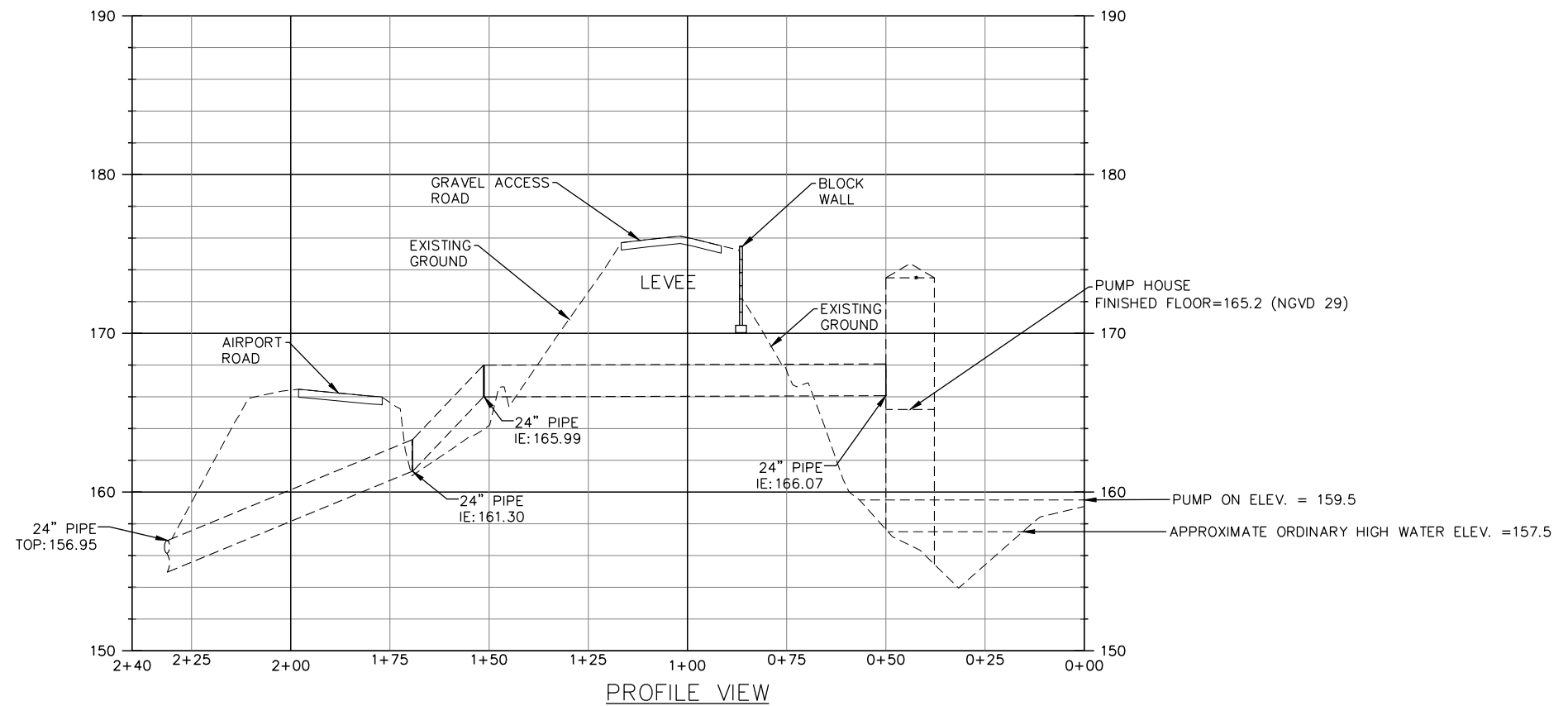
JOB NUMBER 15210
SHEET 5 OF 15 SHEETS

90% DESIGN

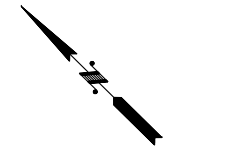


PLAN VIEW

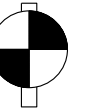
SCALE: H: 1"=20 (1"=40' 11X17)  
V: 1"=5 (1"=10' 11X17)



PROFILE VIEW

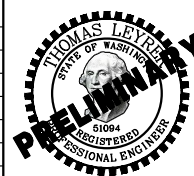


SCALE IN FEET  
0 10 20 40



VERTICAL DATUM  
NGVD 29  
BENCH MARK: MON CHE-14  
EL = 165.545

DESIGNED BY:	DATE	NO.	DATE	REVISIONS
ENTERED BY: J. HNATISHIN	04-18-16			
CHECKED BY:				
PROJ. ENGR.: T. LEYRER	04-18-16			
Plotted By: John Hnatishin on 5/12/16 4:23 PM				
G:\Project\2015\15210 Chehalis Airport Pump Station\CAD\Drawings\Construction\Production\15210_Plan and Profile.dwg Jhnatishin 5/12/16 3:04 PM				



**SKILLINGS  
CONNOLLY**  
5016 Lacey Boulevard SE, Lacey, WA 98503  
Ph.: (360) 491-3399 www.skillings.com

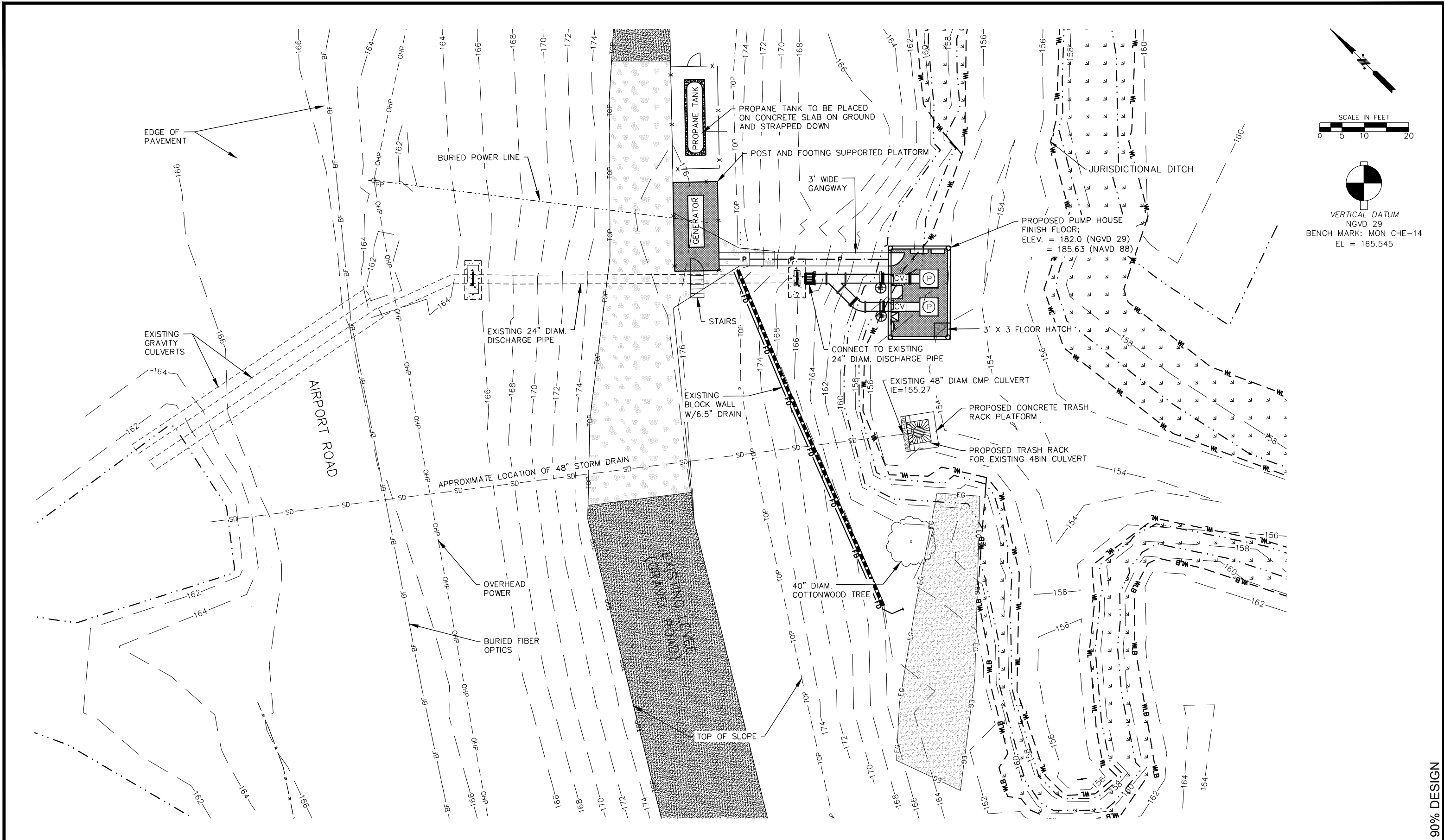
**CHEHALIS-CENTRALIA AIRPORT  
PUMP STATION REBUILD**

**EXISTING SITE PLAN**

90% DESIGN

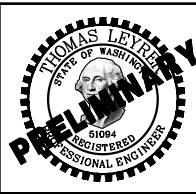
JOB NUMBER  
15210  
SHEET  
6  
OF  
15  
SHEETS





90% DESIGN

DESIGNED BY:	DATE	NO.	DATE	REVISIONS
ENTERED BY: J. HNATISHIN	04-18-16			
CHECKED BY:				
PROJ. ENGR.: T. LEYRER	04-18-16			
Plotted By: John Hnatishin on 5/12/16 4:23 PM				
G:\Project\2015\15210 Chehalis Airport Pump Station\CAD\Drawings\Construction\Production\15210_PUMP STATION SITE PLAN.dwg jhnatishin 5/12/16 2:55 PM				

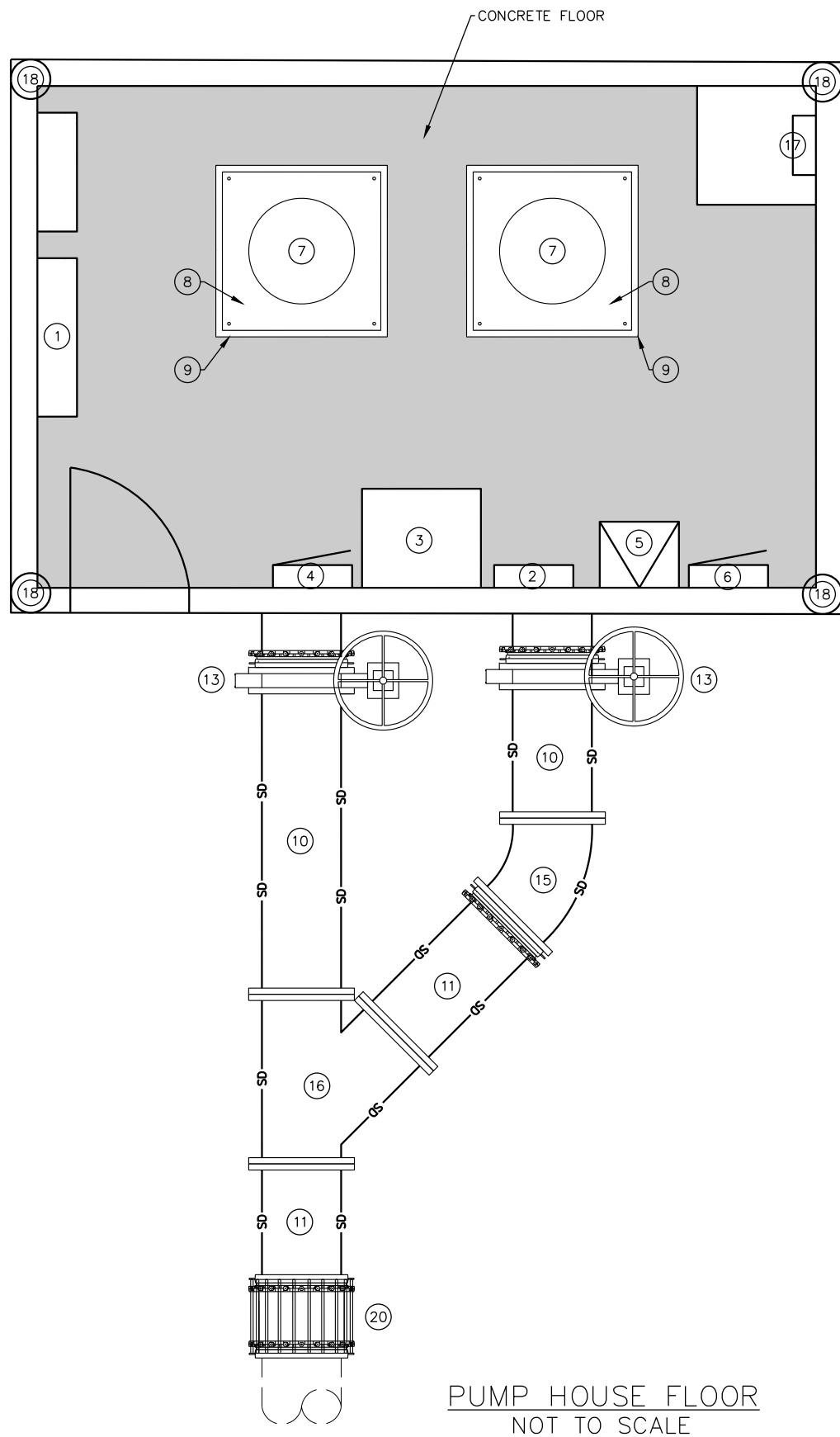


**SKILLINGS CONNOLLY**  
5016 Lacey Boulevard SE, Lacey, WA 98503  
Ph.: (360) 491-3399 www.skillings.com

**CHEHALIS-CENTRALIA AIRPORT  
PUMP STATION REBUILD**

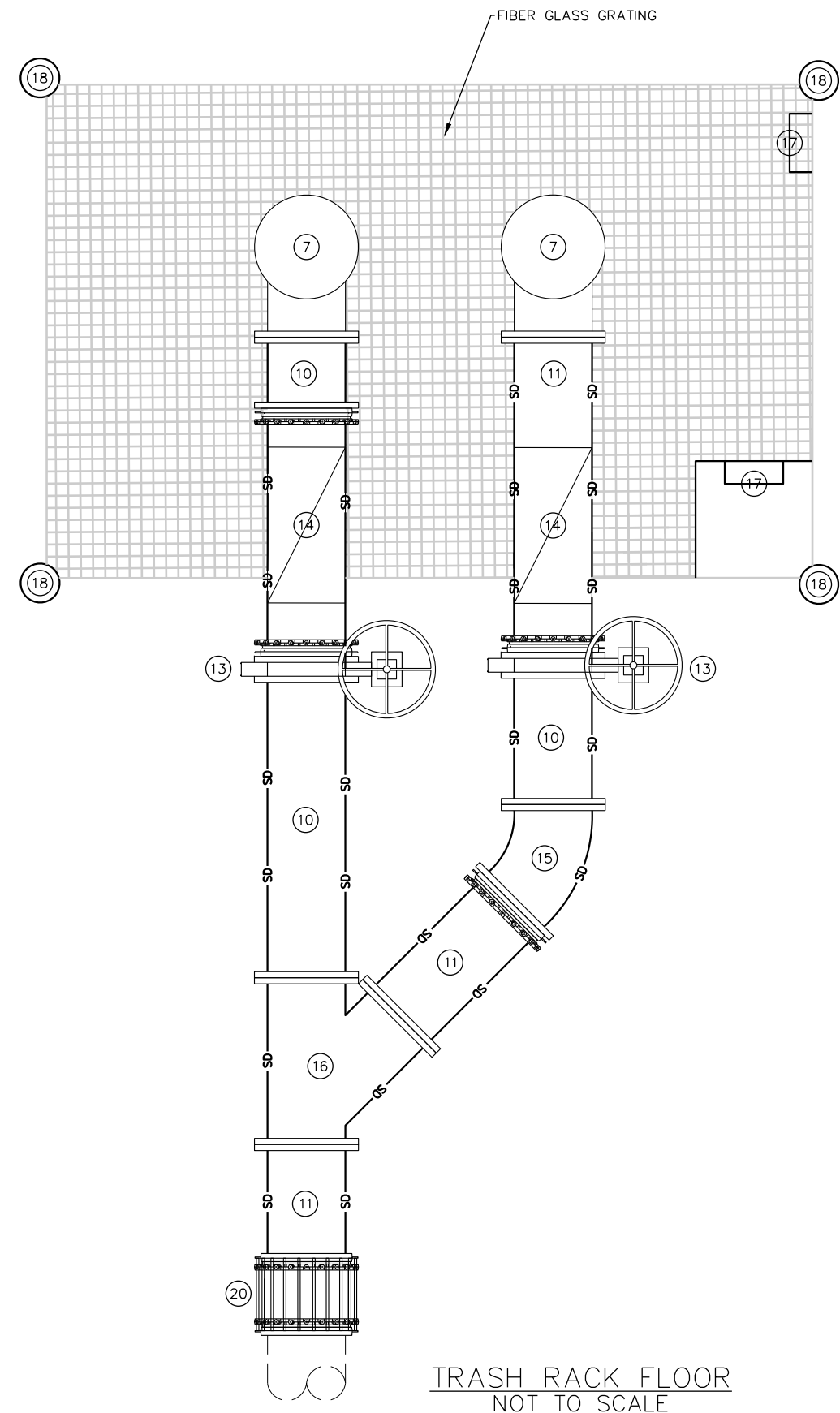
**PUMP STATION SITE PLAN**

JOB NUMBER	15210
SHEET	7
OF	15
SHEETS	

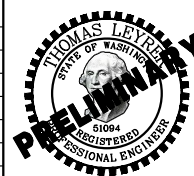


### LEGEND

- ① DUPLEX CONTROLLER PANEL WITH SOFT STARTER
- ② PANEL H1, 480/277V – 3Ø.
- ③ AUTOMATIC TRANSFER SWITCH
- ④ MAIN CIRCUIT BREAKER
- ⑤ TRANSFORMER 480V TO 208/1120V
- ⑥ PANEL L1, 208/120V – 20
- ⑦ 20AP PUMP AND 50 HP MOTOR
- ⑧ BASE PLATE 48"X48"X1.25"
- ⑨ SOLEPLATE 52"X52"X1.25"
- ⑩ 24" DI SPOOL, FLGxFLG
- ⑪ 24" DI SPOOL, FLGxPE
- ⑫ 24" DI RESTRAINED FLANGE COUPLING ADAPTOR
- ⑬ 24" DI BUTTERFLY VALVE
- ⑭ 24" DI CHECK VALVE
- ⑮ 45° DI FLGxFLG BEND
- ⑯ 24" DI FLGxFLGxFLG WYE
- ⑰ LADDER
- ⑱ PILE – 12" DIAM.
- ⑲ TRASH RACK PLATFORM
- ⑳ 24" DIAM. 20" LONG BARREL COUPLING



	DATE	NO.	DATE	REVISIONS
DESIGNED BY:	04-18-16			
ENTERED BY: J. HNATISHIN	04-18-16			
CHECKED BY:				
PROJ. ENGR.: T. LEYRER	04-18-16			
Plotted By: John Hnatishin on 5/12/16 4:24 PM				
G:\Project\2015\15210 Chehalis Airport Pump Station\CAD\Drawings\Construction\Production\15210_Pump House Floor Plan.dwg Jhnatishin 5/12/16 3:30 PM				



**SKILLINGS  
CONNOLLY**

5016 Lacey Boulevard SE, Lacey, WA 98503  
Ph.: (360) 491-3399 www.skillings.com

**CHEHALIS-CENTRALIA AIRPORT  
PUMP STATION REBUILD**

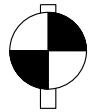
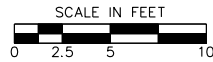
**PUMP STATION REBUILD  
FLOOR PLAN**

JOB NUMBER  
15210

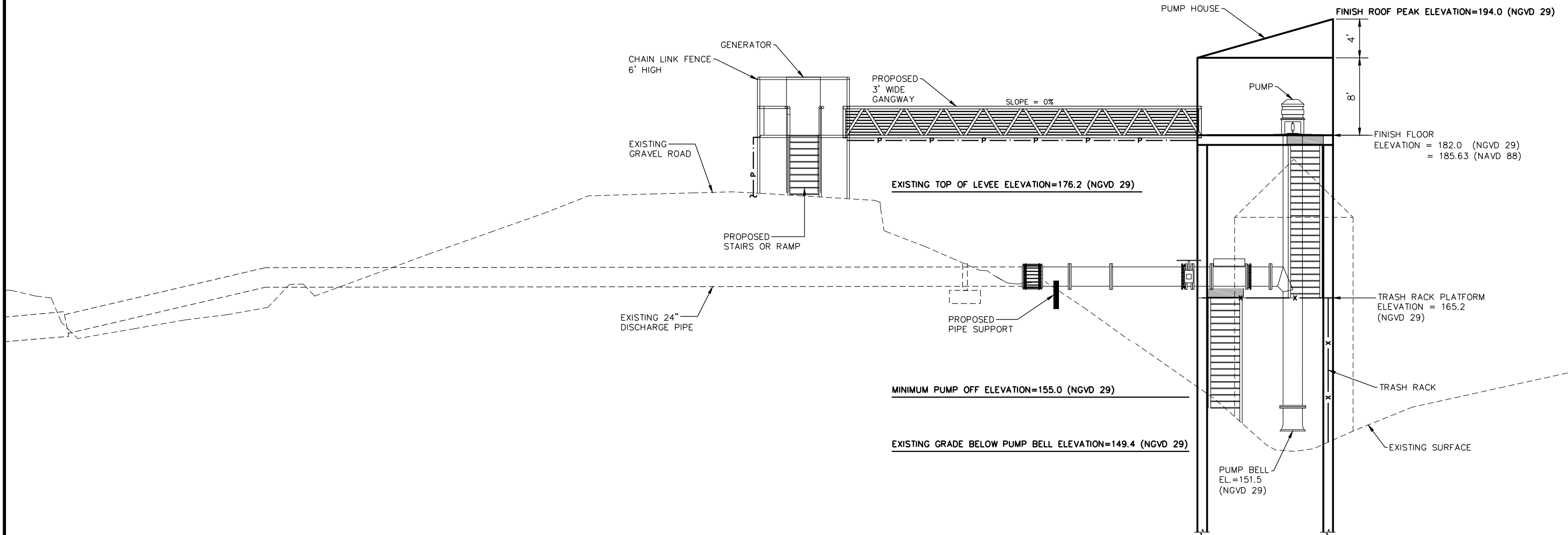
SHEET  
8  
OF  
15  
SHEETS

90% DESIGN

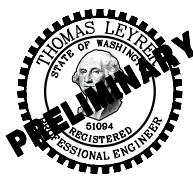




VERTICAL DATUM  
NGVD 29  
BENCH MARK: MON. CHE-14  
EL = 165.545



	DATE	REVISIONS		
DESIGNED BY:	04-18-16	NO.	DATE	
ENTERED BY: J. HNATISHIN	04-18-16			
CHECKED BY:				
PROJ. ENGR.: T. LEYRER	04-18-16			
Plotted By: John Hnatishin on 5/12/16 4:24 PM				
G:\Project\2015\15210 Chehalis Airport Pump Station\CAD\Drawings\Construction\Production\15210_PUMP HOUSE CROSS-SECTION.dwg Mlopez 5/12/16 4:06 PM				



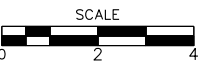
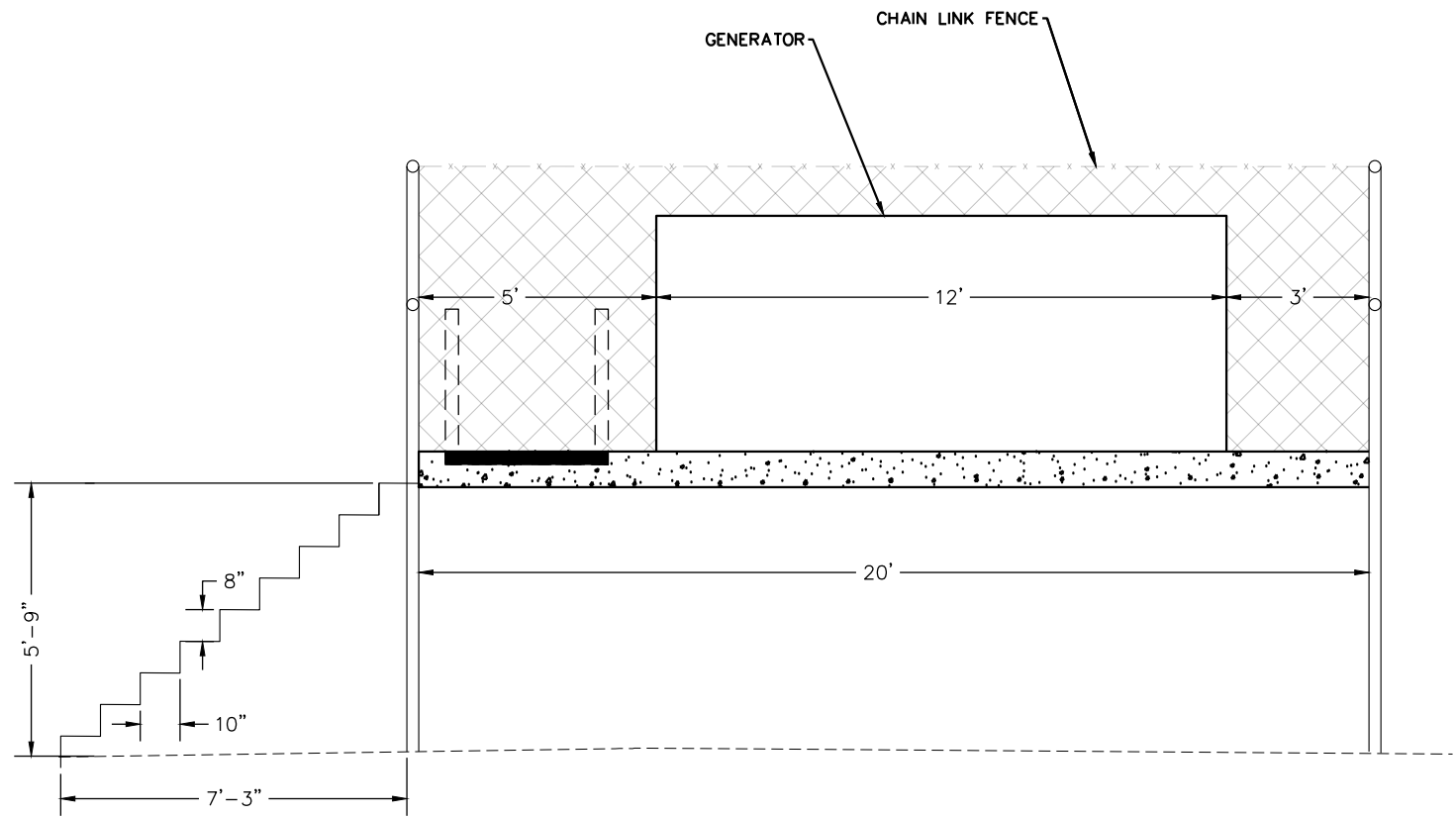
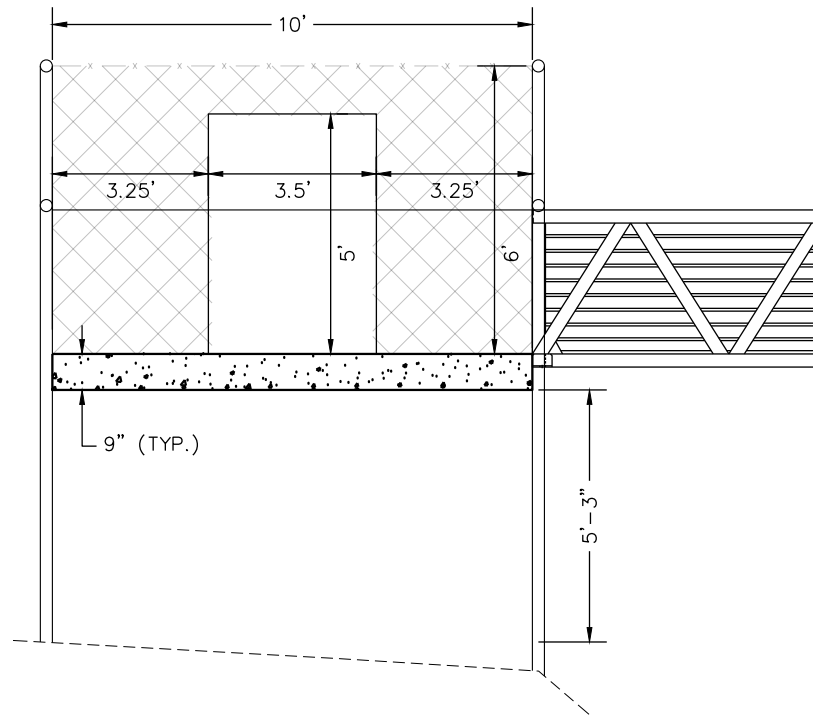
**SKILLINGS  
CONNOLLY**  
5016 Lacey Boulevard SE, Lacey, WA 98503  
Ph.: (360) 491-3399 www.skillings.com

**CHEHALIS-CENTRALIA AIRPORT  
PUMP STATION REBUILD**

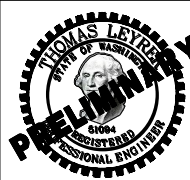
**PUMP HOUSE  
CROSS-SECTION**

JOB NUMBER  
15210  
SHEET  
9  
OF  
15  
SHEETS

90% DESIGN



	DATE	REVISIONS		
DESIGNED BY:	04-18-16	NO.	DATE	
ENTERED BY: J. HNATISHIN	04-18-16			
CHECKED BY:				
PROJ. ENGR.: T. LEYRER	04-18-16			
Plotted By: John Hnatishin on 5/12/16 4:24 PM				
G:\Project\2015\15210 Chehalis Airport Pump Station\CAD\Drawings\Construction\Production\15210_GENERATOR CROSS SECTIONS.dwg Jhnatishin 5/12/16 3:39 PM				



**SKILLINGS  
CONNOLLY**

5016 Lacey Boulevard SE, Lacey, WA 98503  
Ph.: (360) 491-3399 www.skillings.com

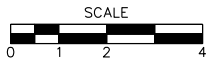
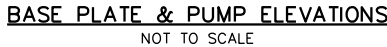
**CHEHALIS-CENTRALIA AIRPORT  
PUMP STATION REBUILD**

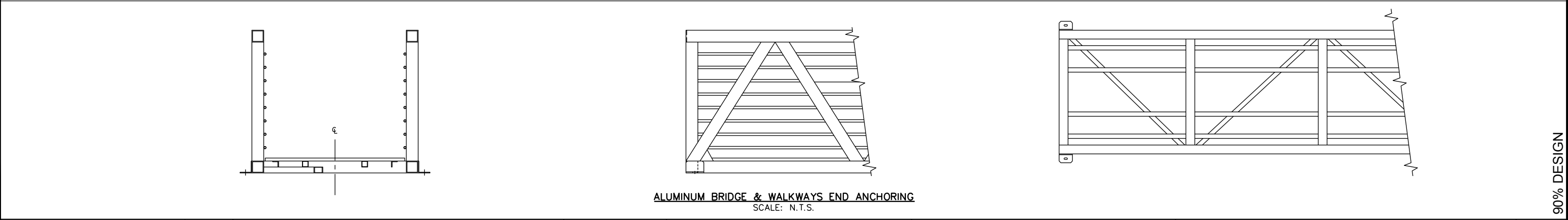
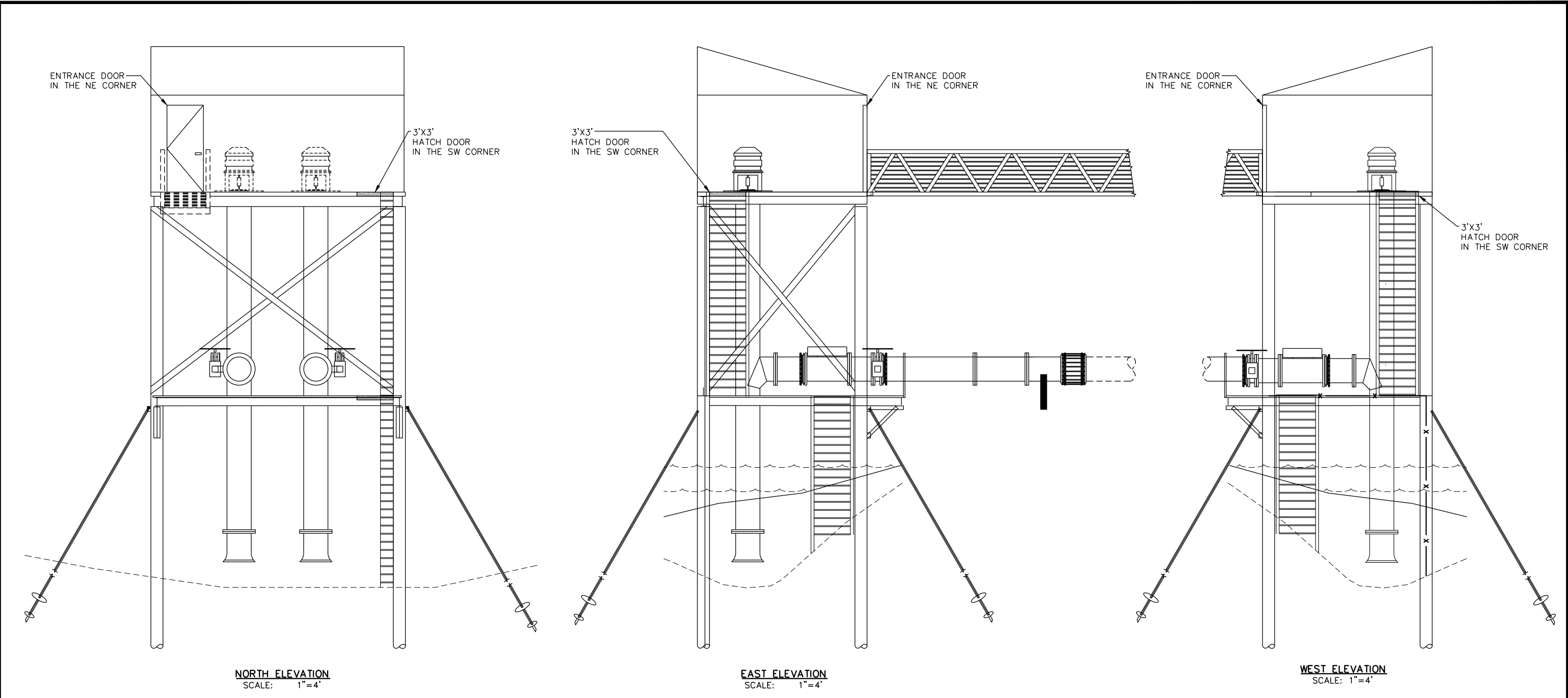
**GENERATOR CROSS SECTION**

90% DESIGN

JOB NUMBER  
15210

SHEET  
10  
OF  
15  
SHEETS

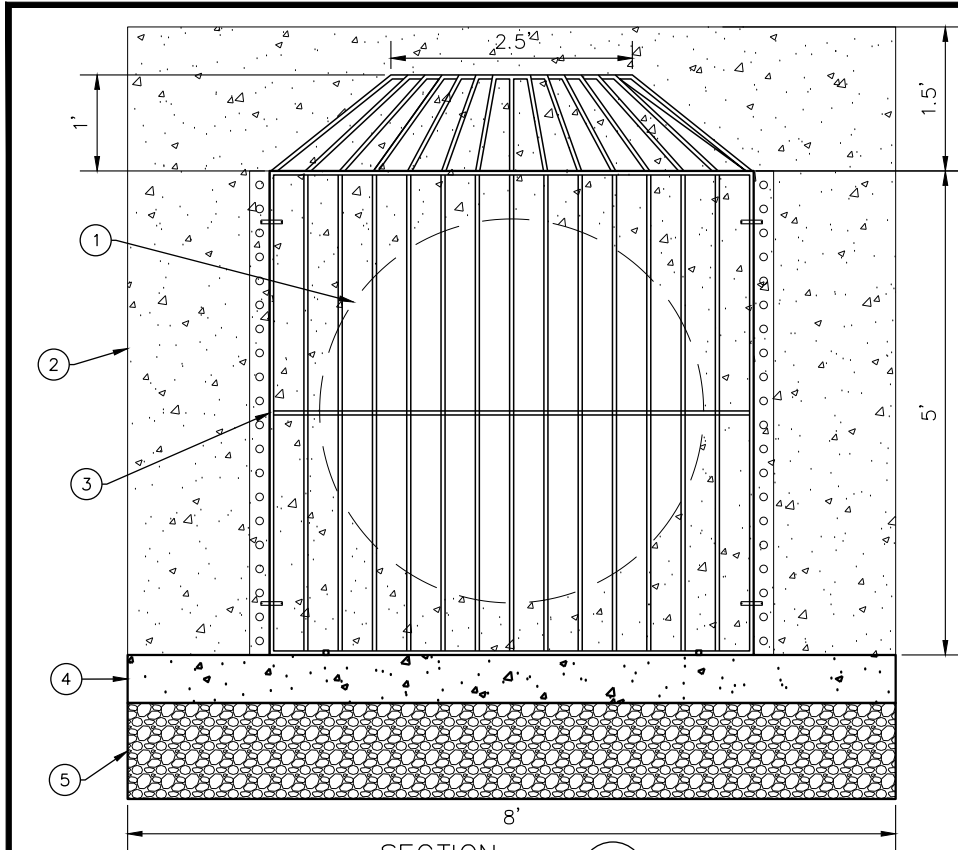




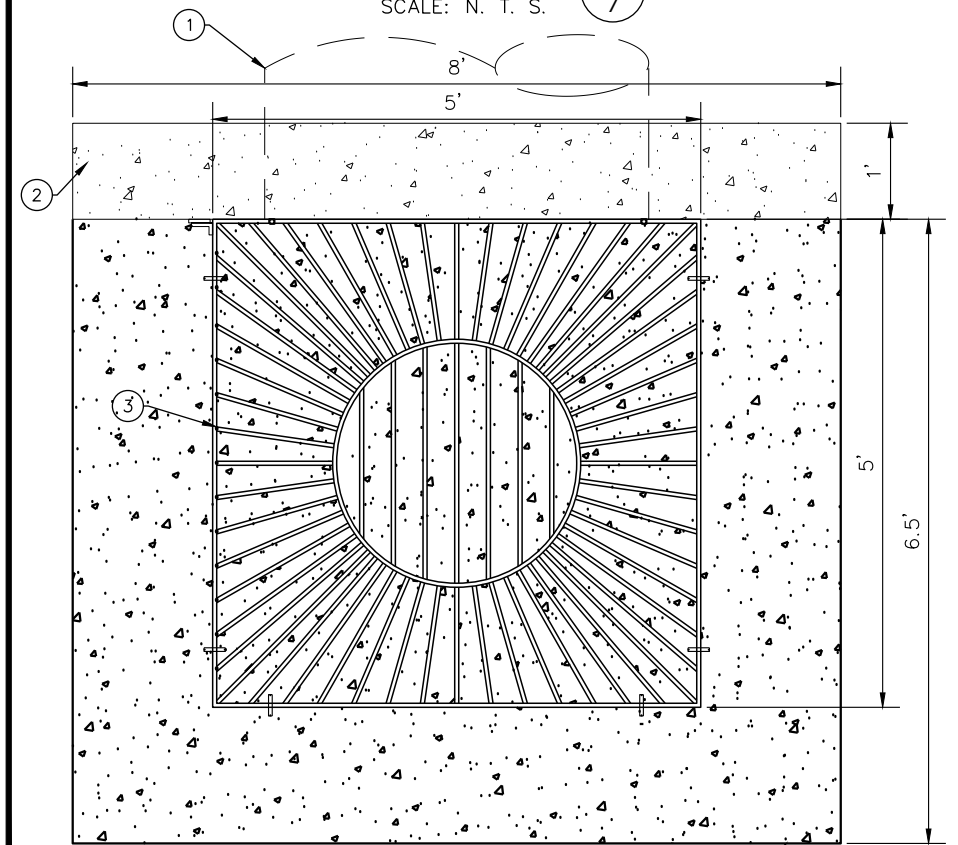
DESIGNED BY:		DATE	NO.		DATE	REVISIONS	
ENTERED BY: J. HNATISHIN		04-18-16					
CHECKED BY:		04-18-16					
PROJ. ENGR.: T. LEYRER		04-18-16					
Plotted By: John Hnatishin on 5/12/16 4:25 PM							
G:\Project\2015\15210 Chehalis Airport Pump Station\CAD\Drawings\Construction\Production\15210_Pump Station Trash Rack.dwg Mlopez 5/12/16 4:19 PM							

	 <b>SKILLINGS CONNOLLY</b> 5016 Lacey Boulevard SE, Lacey, WA 98503 Ph.: (360) 491-3399 www.skillings.com	<b>CHEHALIS-CENTRALIA AIRPORT PUMP STATION REBUILD</b>	<b>PUMP HOUSE ELEVATIONS &amp; TRASH RACK DETAIL</b>	JOB NUMBER 15210
				SHEET 12 OF 15 SHEETS

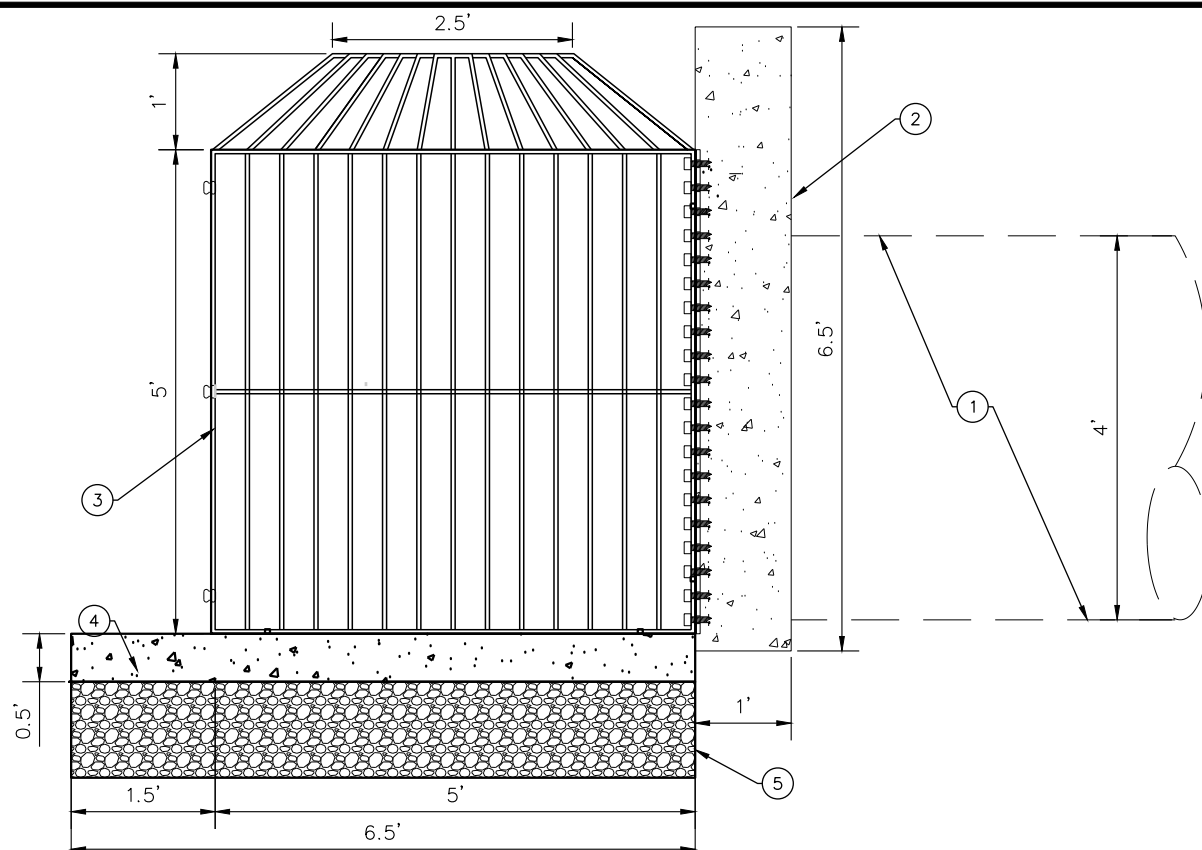
90% DESIGN



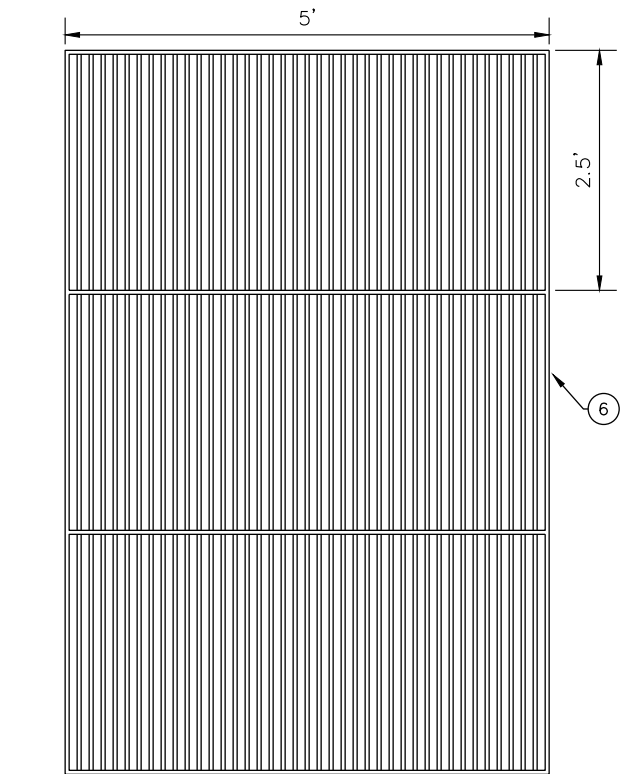
SECTION A  
SCALE: N. T. S.



SECTION C  
SCALE: N. T. S.



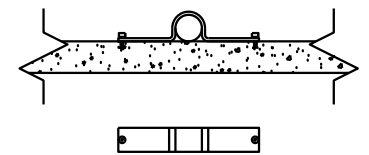
SECTION B  
SCALE: N. T. S.



PUMP STATION TRASH RACK SECTION  
SCALE: N. T. S.

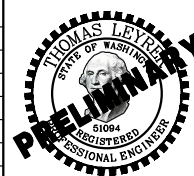
# NOTE LEGEND

- EXISTING 48" CULVERT PIPE TO CHEHALIS RIVER
- EXISTING 6.7' X 8.0' X 1.0' CONCRETE HEADWALL
- 3/4" DIAM. SMOOTH ROUND BARS (TYP.)  
PROPOSED TRASH RACK SPACING = 4"
- PROPOSED 8' X 6.5' X 0.5' CONCRETE PAD
- 1' GRAVEL BASE
- TRASH RACK SLAT DIMENSIONS 1/4" X 1" X H SLAT



SECTION B  
SCALE: N. T. S.

DESIGNED BY:	DATE	NO.	DATE	REVISIONS
ENTERED BY: J. HNATISHIN	04-18-16			
CHECKED BY:				
PROJ. ENGR.: T. LEYRER	04-18-16			
Plotted By: John Hnatishin on 5/12/16 4:25 PM				
G:\Project\2015\15210 Chehalis Airport Pump Station\CAD\Drawings\Construction\Production\D_15210_48IN Culvert Trash Rack Detail.dwg jhnatishin 5/12/16 3:00 PM				



**SKILLINGS CONNOLLY**  
5016 Lacey Boulevard SE, Lacey, WA 98503  
Ph.: (360) 491-3399 www.skillings.com

**CHEHALIS-CENTRALIA AIRPORT  
PUMP STATION REBUILD**

CHEHALIS

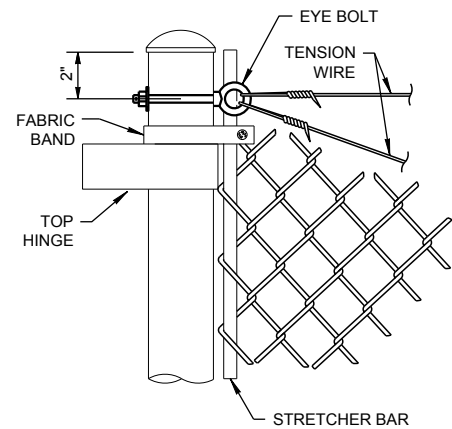
WA

**48IN CULVERT TRASH RACK  
DETAIL**

90% DESIGN

JOB NUMBER 15210
SHEET 13 OF 15 SHEETS

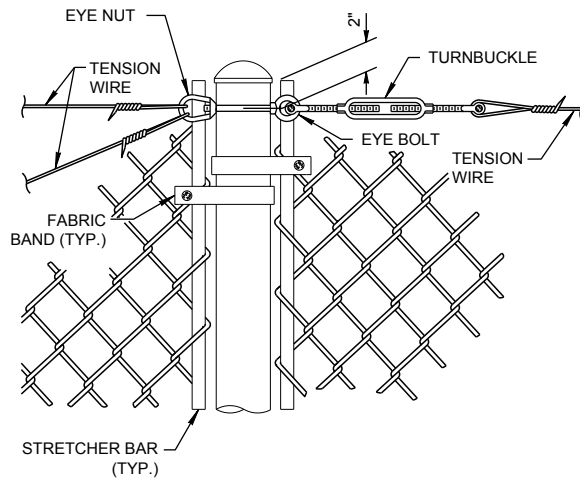




GATEPOST DETAIL

SCALE: N. T. S.

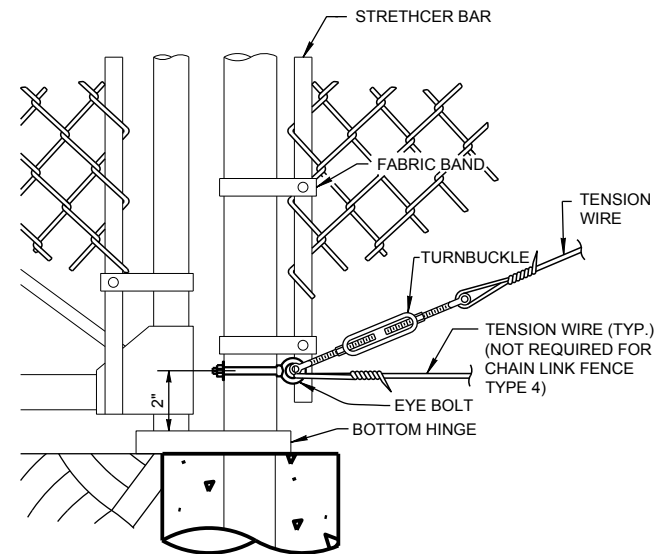
A  
7



PULL POST DETAIL

SCALE: N. T. S.

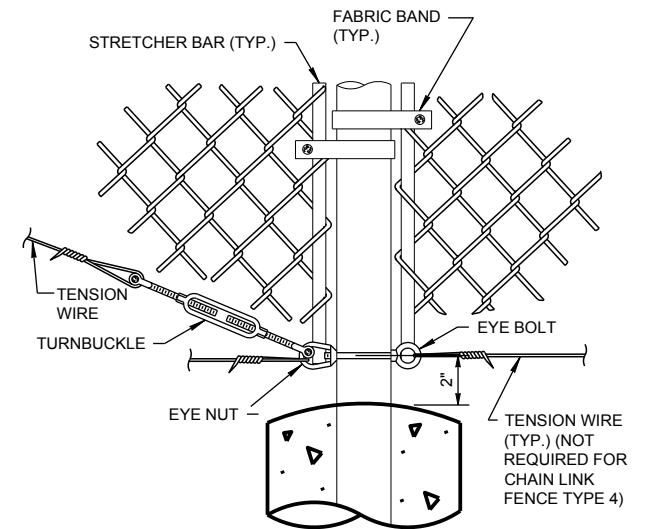
B  
7



GATEPOST DETAIL

SCALE: N. T. S.

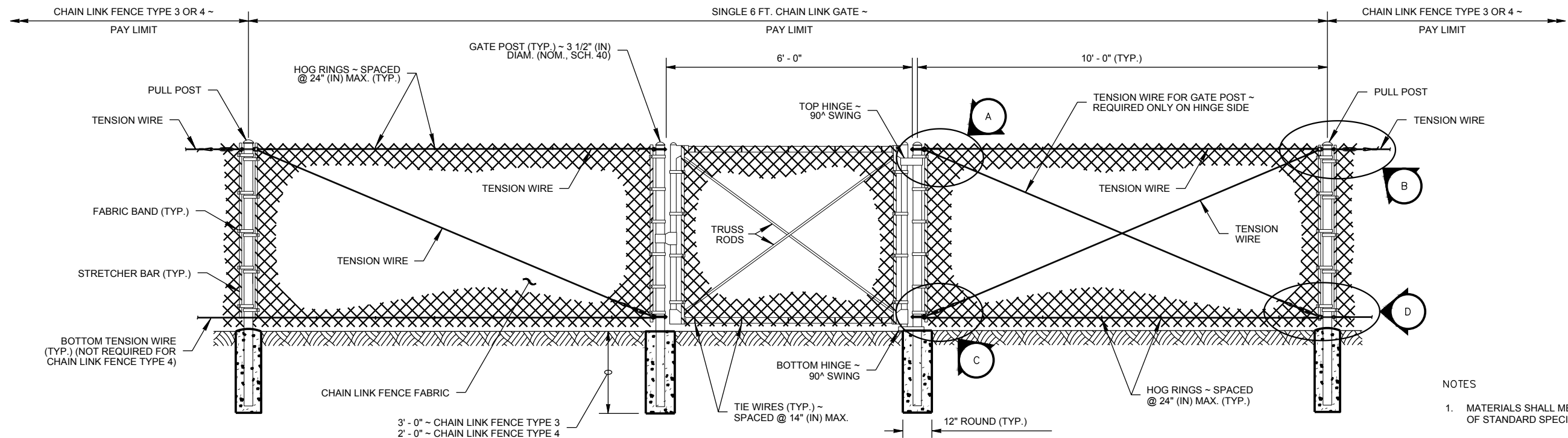
C  
7



PULL POST DETAIL

SCALE: N. T. S.

D  
7



SINGLE GATE

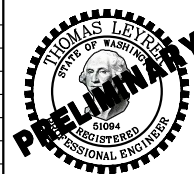
SCALE: N. T. S.

B  
7

NOTES

1. MATERIALS SHALL MEET THE REQUIREMENTS OF STANDARD SPECIFICATION 9-16.

DESIGNED BY:	DATE	NO.	DATE	REVISIONS
ENTERED BY: J. HNATISHIN	04-18-16			
CHECKED BY:				
PROJ. ENGR.: T. LEYRER	04-18-16			
Plotted By: John Hnatishin on 5/12/16 4:25 PM				
G:\Project\2015\15210 Chehalis Airport Pump Station\CAD\Drawings\Construction\Production\15210_CHAIN LINK GATE Detail.dwg Mlopez 5/12/16 3:10 PM				



5016 Lacey Boulevard SE, Lacey, WA 98503  
Ph.: (360) 491-3399 www.skillings.com

**CHEHALIS-CENTRALIA AIRPORT  
PUMP STATION REBUILD**

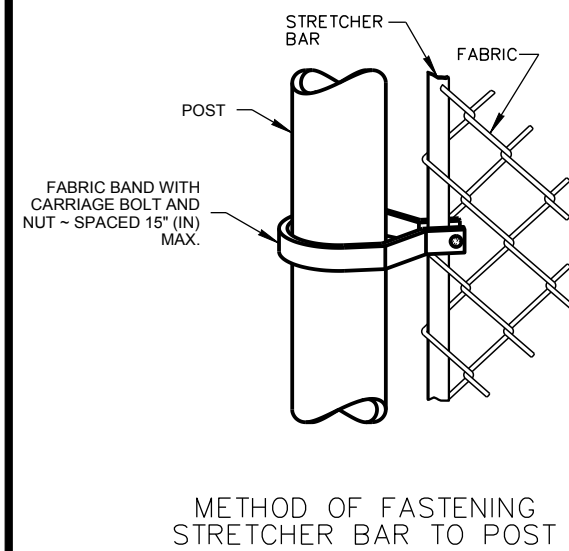
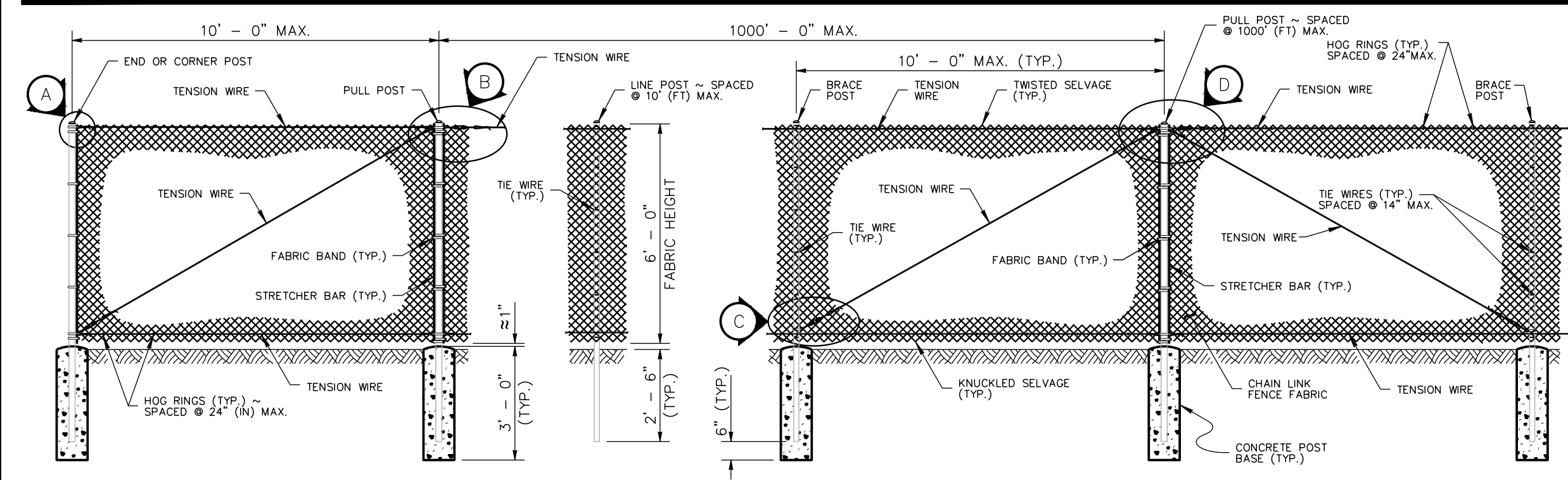
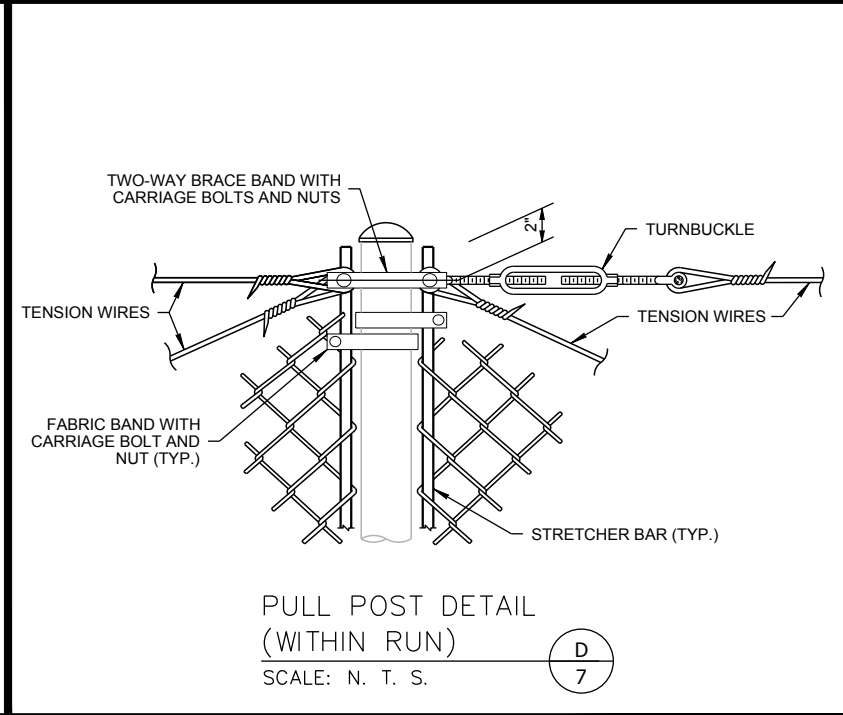
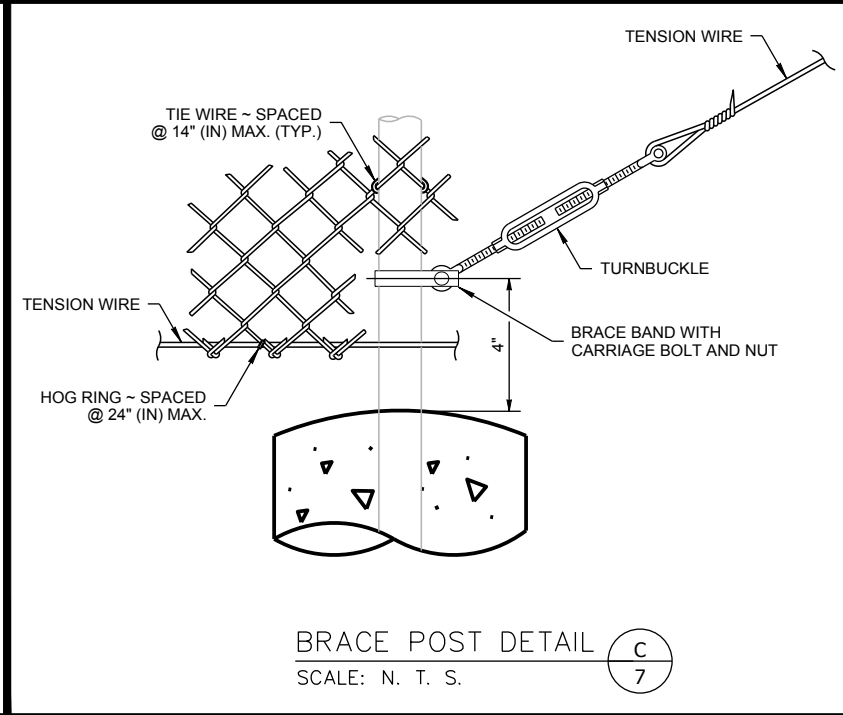
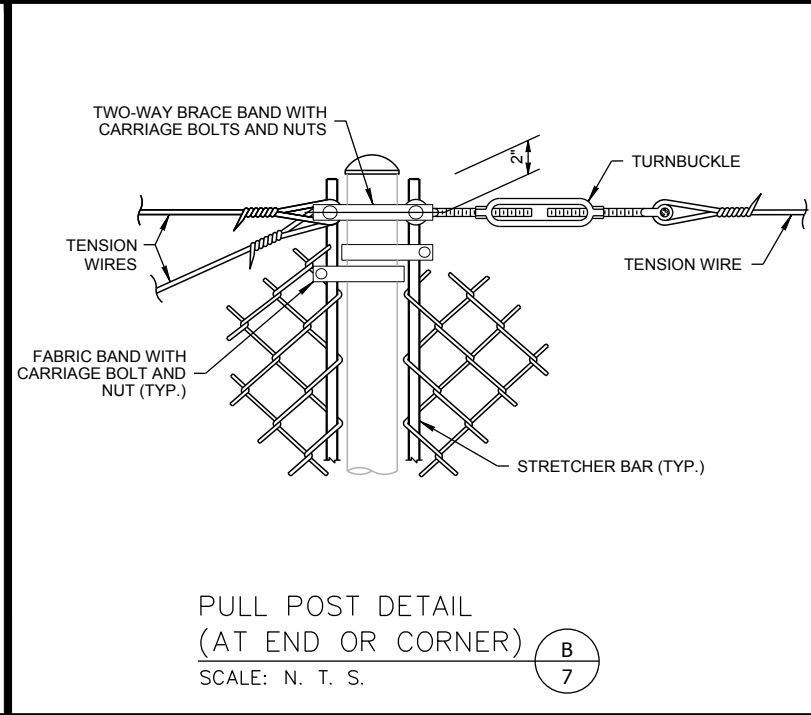
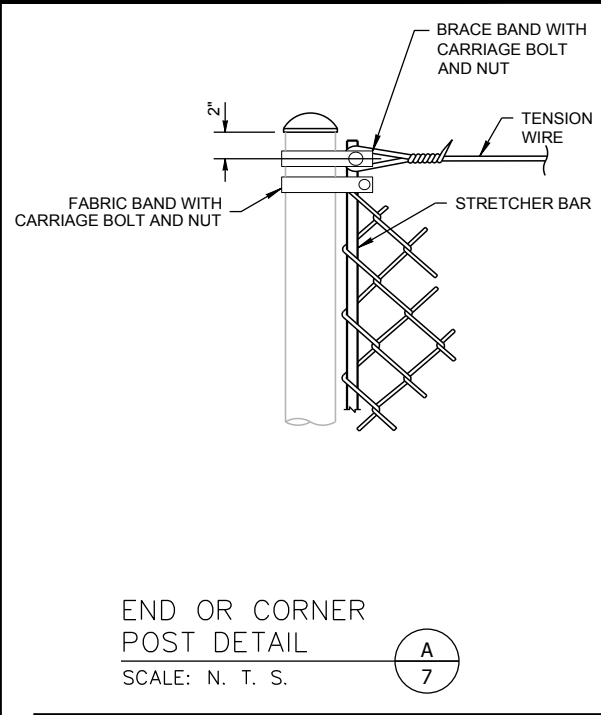
CHEHALIS

WA

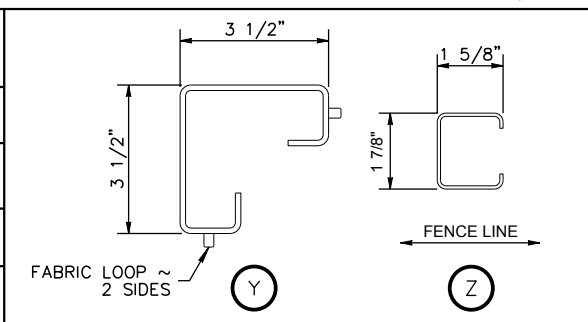
**CHAIN LINK GATE DETAIL**

90% DESIGN

JOB NUMBER 15210
SHEET 14 OF 15 SHEETS



POST AND RAIL SPECIFICATIONS			
POST	PIPE	ROLL FORMED	
	NOM. SIZE (SCH. 40) I.D.	SECTION	WEIGHT (lb/ft)
END, CORNER, OR PULL POST	2 1/2" DIAM.	<b>Y</b>	5.10
LINE OR BRACE POST	2" DIAM.	<b>Z</b>	1.85



**CHAIN LINK FENCE TYPE 3**

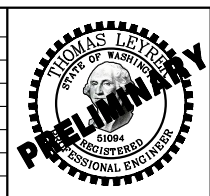
SCALE: N. T. S.

**B**  
7

**NOTES**

- ALL CONCRETE POST BASES SHALL BE 10" (IN) MINIMUM DIAMETER.
- ALONG THE TOP AND BOTTOM, USING HOG RINGS, FASTEN THE CHAIN LINK FENCE FABRIC TO THE TENSION WIRE WITHIN THE LIMITS OF THE FIRST FULL FABRIC WEAVE.
- DETAILS ARE ILLUSTRATIVE AND SHALL NOT LIMIT HARDWARE DESIGN OR POST SELECTION OF ANY PARTICULAR FENCE TYPE.
- FENCING SHALL BE USED FOR SECURITY AND BOUNDARY DELINEATION ONLY.

DESIGNED BY:	DATE	NO.	DATE	REVISIONS
ENTERED BY: J. HNATISHIN	04-18-16			
CHECKED BY:				
PROJ. ENGR.: T. LEYRER	04-18-16			
Plotted By: John Hnatishin on 5/12/16 4:26 PM				
G:\Project\2015\15210 Chehalis Airport Pump Station\CAD\Drawings\Construction\Production\15210_CHAIN LINK FENCE Detail.dwg Mlopez 5/12/16 3:10 PM				



**SKILLINGS CONNOLLY**

5016 Lacey Boulevard SE, Lacey, WA 98503  
Ph.: (360) 491-3399 www.skillings.com

**CHEHALIS-CENTRALIA AIRPORT PUMP STATION REBUILD**

CHEHALIS WA

**CHAIN LINK FENCE DETAIL**

JOB NUMBER 15210

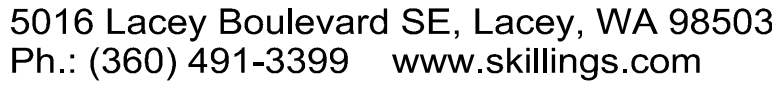
SHEET 15 OF 15 SHEETS

90% DESIGN



Scale:  $1/2'' = 1'-0''$

	DATE	REVISIONS		
DESIGNED BY: E.C. Martin	02/2016	NO.	DATE	
DRAWN BY: E.C. Martin	02/2016	.	.	.
CHECKED BY: .	.			



CHEHALIS WA

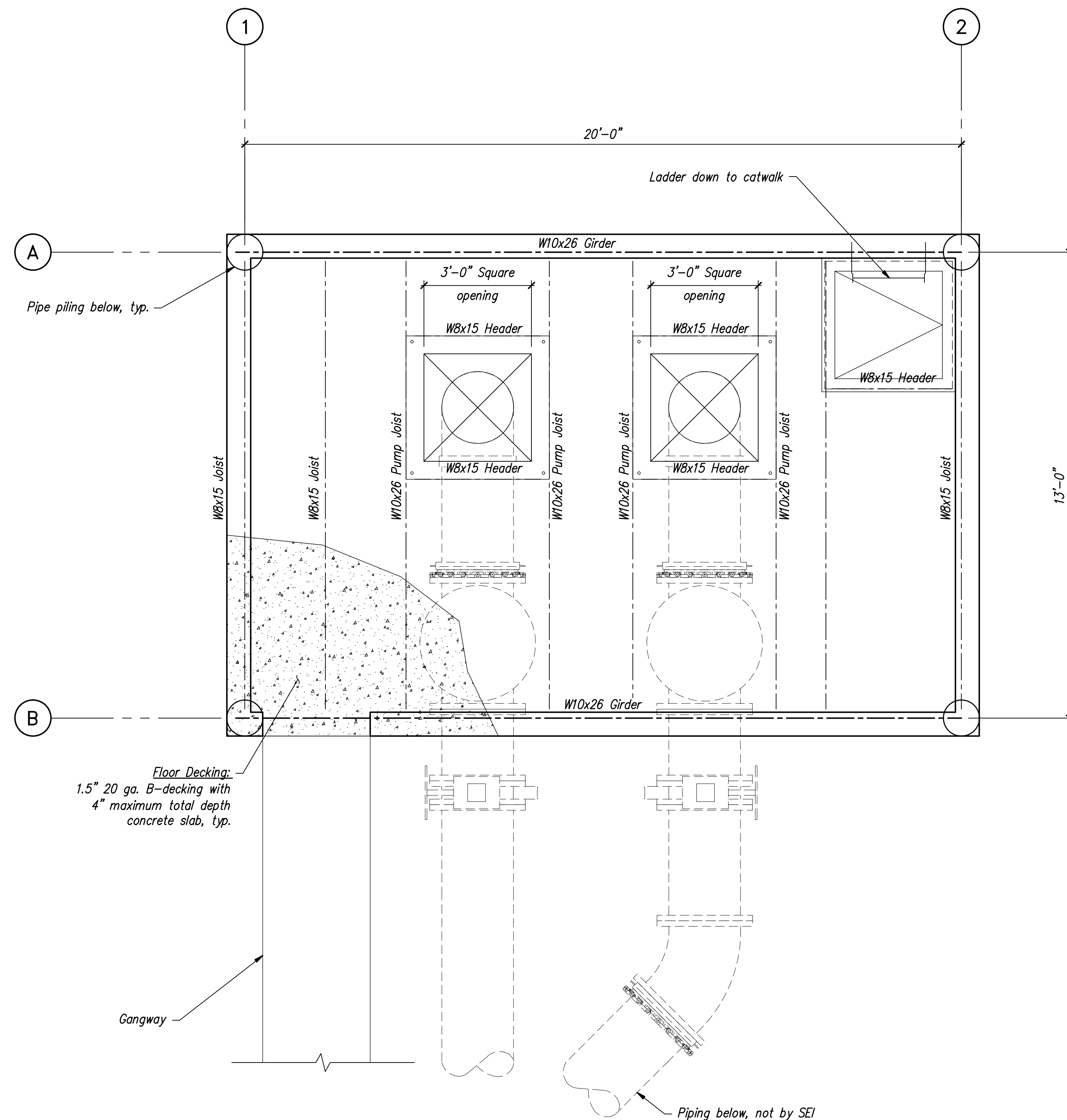
## SAT WALK-THROUGH PLAN

320 Ronlee Lane NW • Olympia, WA 98502  
Tel. 360 867-9284 • Fax 360 867-9318  
SEI Pr. No. - A16102.00

JOB NUMBER  
15210  
PRELIM

---

SHEET  
S2.1  
OF  
####  
SHEETS



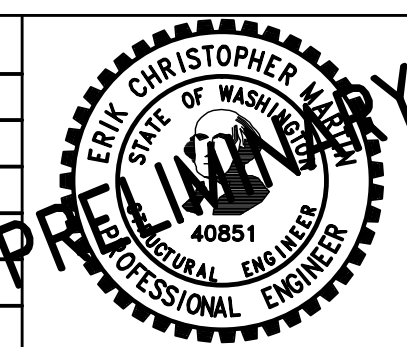
PLATFORM FLOOR FRAMING PLAN

Scale: 1/2" = 1'-0"

**SARGENT**  
Sargent Engineers, Inc.

320 Ronlee Lane NW • Olympia, WA 98502  
Tel. 360 867-9284 • Fax 360 867-9318  
SEI Pr. No. - A16102.00

DESIGNED BY:	DATE	NO.	DATE	REVISIONS
E.C. Martin	02/2016	.	.	
DRAWN BY:	02/2016	.	.	
E.C. Martin				
CHECKED BY:				
.				



**SKILLINGS  
CONNOLLY**

5016 Lacey Boulevard SE, Lacey, WA 98503  
Ph.: (360) 491-3399 www.skillings.com

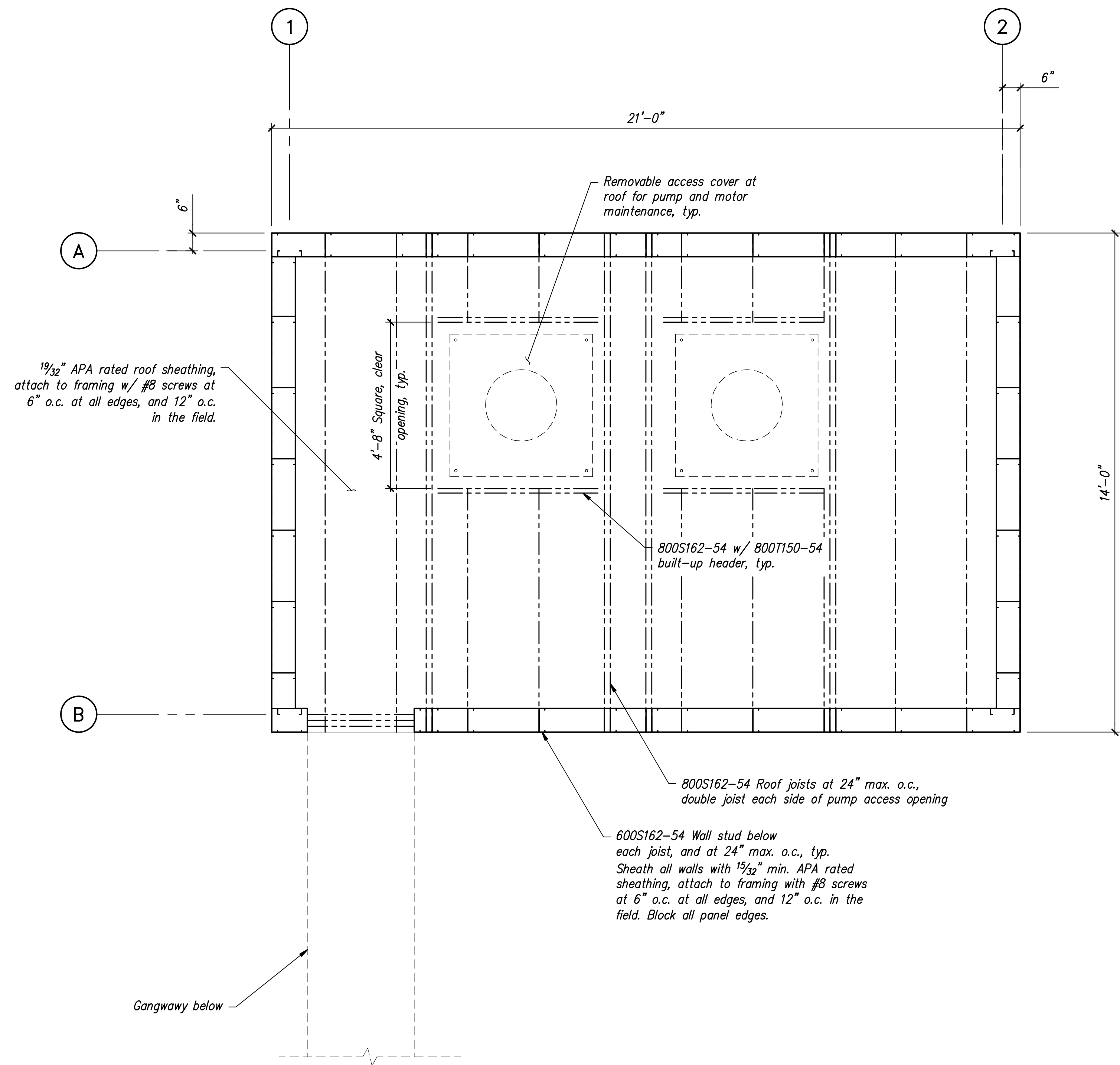
**CHEHALIS-CENTRALIA  
AIRPORT**

CHEHALIS

WA

**PUMP STATION STRUCTURE  
PRELIMINARY  
FLOOR FRAMING PLAN**

JOB NUMBER  
15210  
PRELIM  
SHEET  
S2.2  
OF  
####  
SHEETS



ROOF FRAMING PLAN

Scale: 1/2" = 1'-0"

**SARGENT**  
Sargent Engineers, Inc.

320 Ronlee Lane NW • Olympia, WA 98502  
Tel. 360 867-9284 • Fax 360 867-9318  
SEI Pr. No. - A16102.00

DESIGNED BY:	DATE	NO.	DATE	REVISIONS
E.C. Martin	02/2016	.	.	
DRAWN BY:	02/2016	.	.	
E.C. Martin	.	.	.	
CHECKED BY:	.	.	.	
.	.	.	.	
.	.	.	.	
.	.	.	.	
.	.	.	.	



**SKILLINGS  
CONNOLLY**

5016 Lacey Boulevard SE, Lacey, WA 98503  
Ph.: (360) 491-3399 www.skillings.com

**CHEHALIS-CENTRALIA  
AIRPORT**

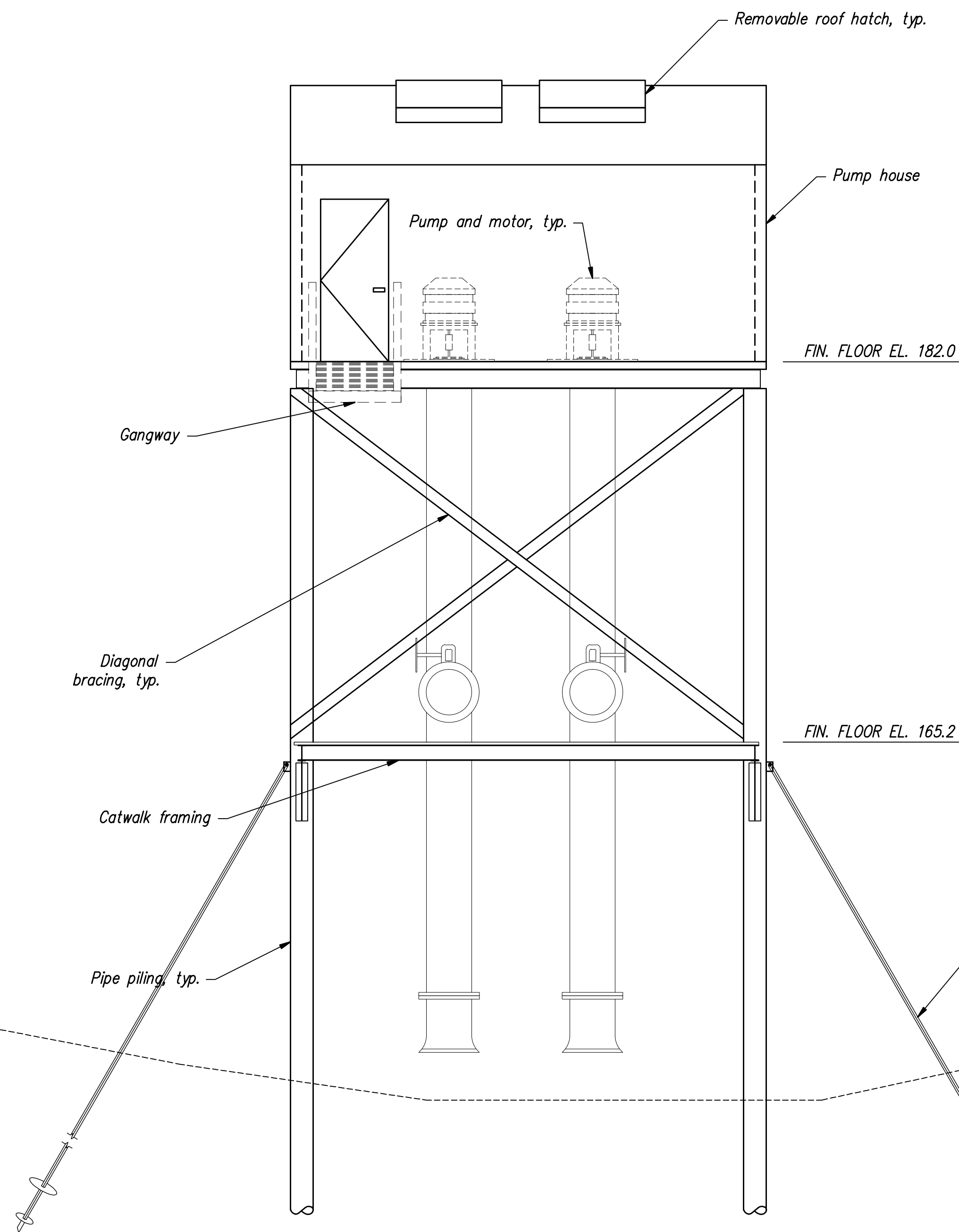
CHEHALIS

WA

**PUMP STATION STRUCTURE  
PRELIMINARY  
ROOF FRAMING PLAN**

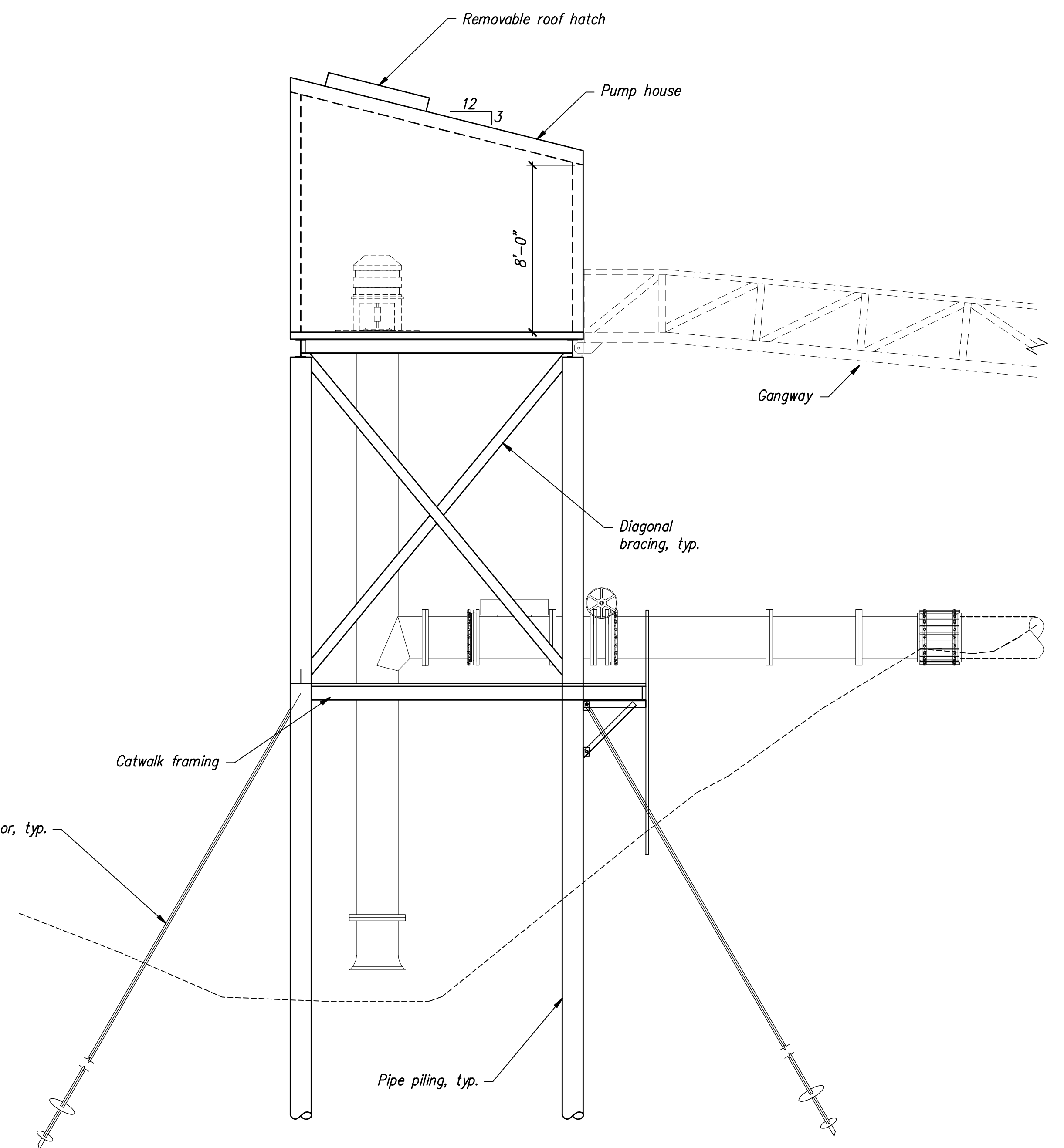
JOB NUMBER  
15210  
PRELIM  
SHEET  
S2.3  
OF  
####  
SHEETS





**NORTH ELEVATION**

Scale: 1/4" = 1'-0"



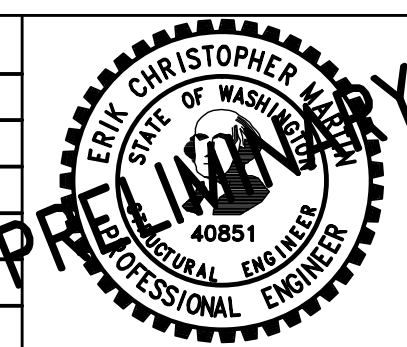
**EAST ELEVATION**

Scale: 1/4" = 1'-0"

**SARGENT**  
Sargent Engineers, Inc.

320 Ronlee Lane NW • Olympia, WA 98502  
Tel. 360 867-9284 • Fax 360 867-9318  
SEI Pr. No. - A16102.00

DESIGNED BY:	DATE	NO.	DATE	REVISIONS
E.C. Martin	02/2016	.	.	
DRAWN BY:	02/2016	.	.	
CHECKED BY:	.	.	.	



**SKILLINGS  
CONNOLLY**

5016 Lacey Boulevard SE, Lacey, WA 98503  
Ph.: (360) 491-3399 www.skillings.com

**CHEHALIS-CENTRALIA  
AIRPORT**

CHEHALIS

WA

**PUMP STATION STRUCTURE  
PRELIMINARY  
ELEVATIONS**

JOB NUMBER  
15210  
PRELIM  
SHEET  
S3.1  
OF  
####  
SHEETS