

Welcome to the Wishkah Road Comprehensive Flood Study Open House

Grays Harbor County Public Works
With Funding From Chehalis River Basin Flood Authority

June 29, 2016



Project Consultant Team

Watershed Science & Engineering

Project Management

Hydrology, Hydraulics & Geomorphology

Grays Harbor Council of Governments

Public Involvement

KPFF Consulting Engineers

Civil Design & Cost Estimating

Pacific Geomatic Services

Bathymetric Survey

GeoTerra

LiDAR & Aerial Imaging

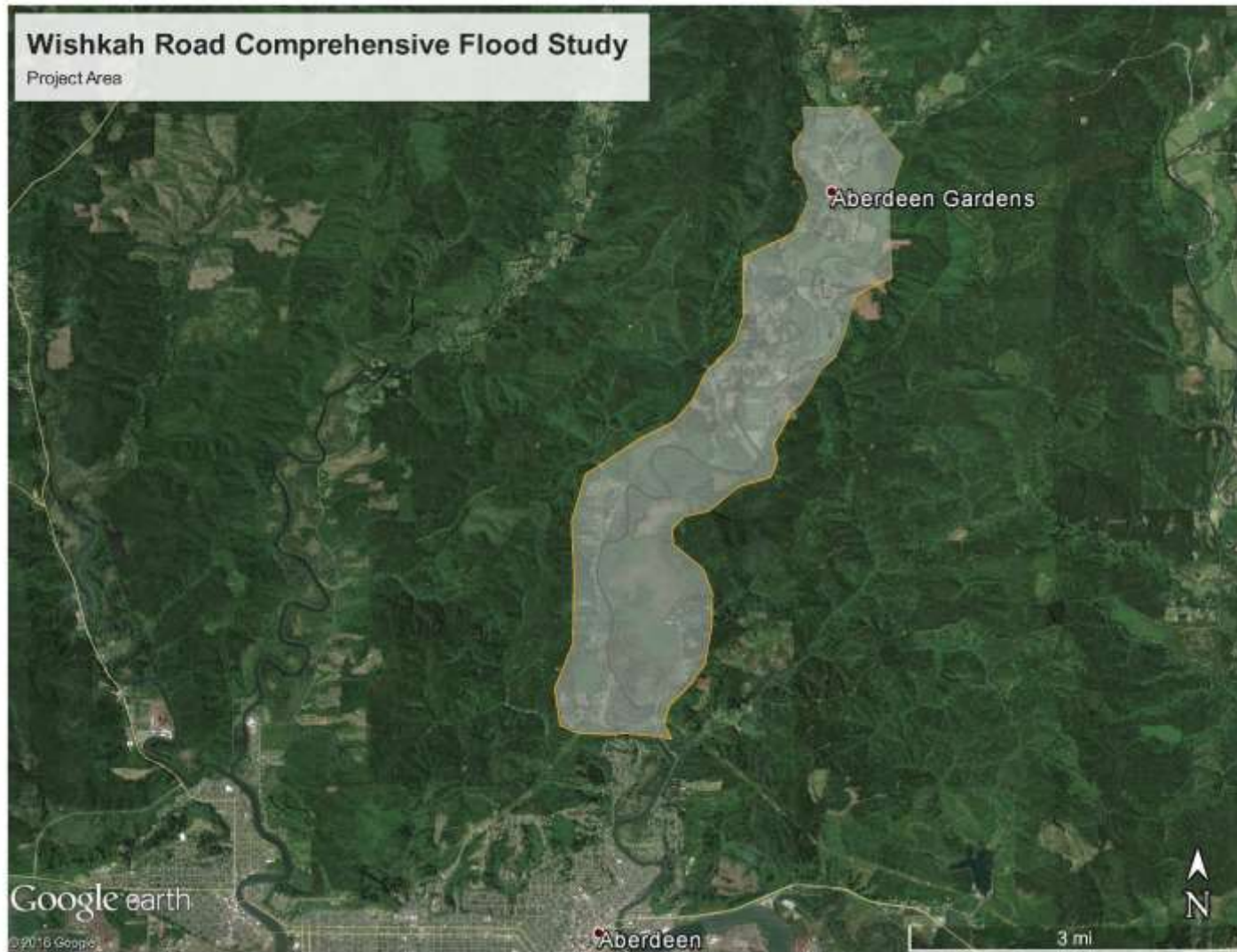
Confluence Environmental

Permitting

Pan Geo

Geotechnical Analysis





What is the Study About?

STUDY PURPOSE

- Funded by Chehalis River Basin Flood Authority
- MP 2.2 to MP 7.6



Study Purpose

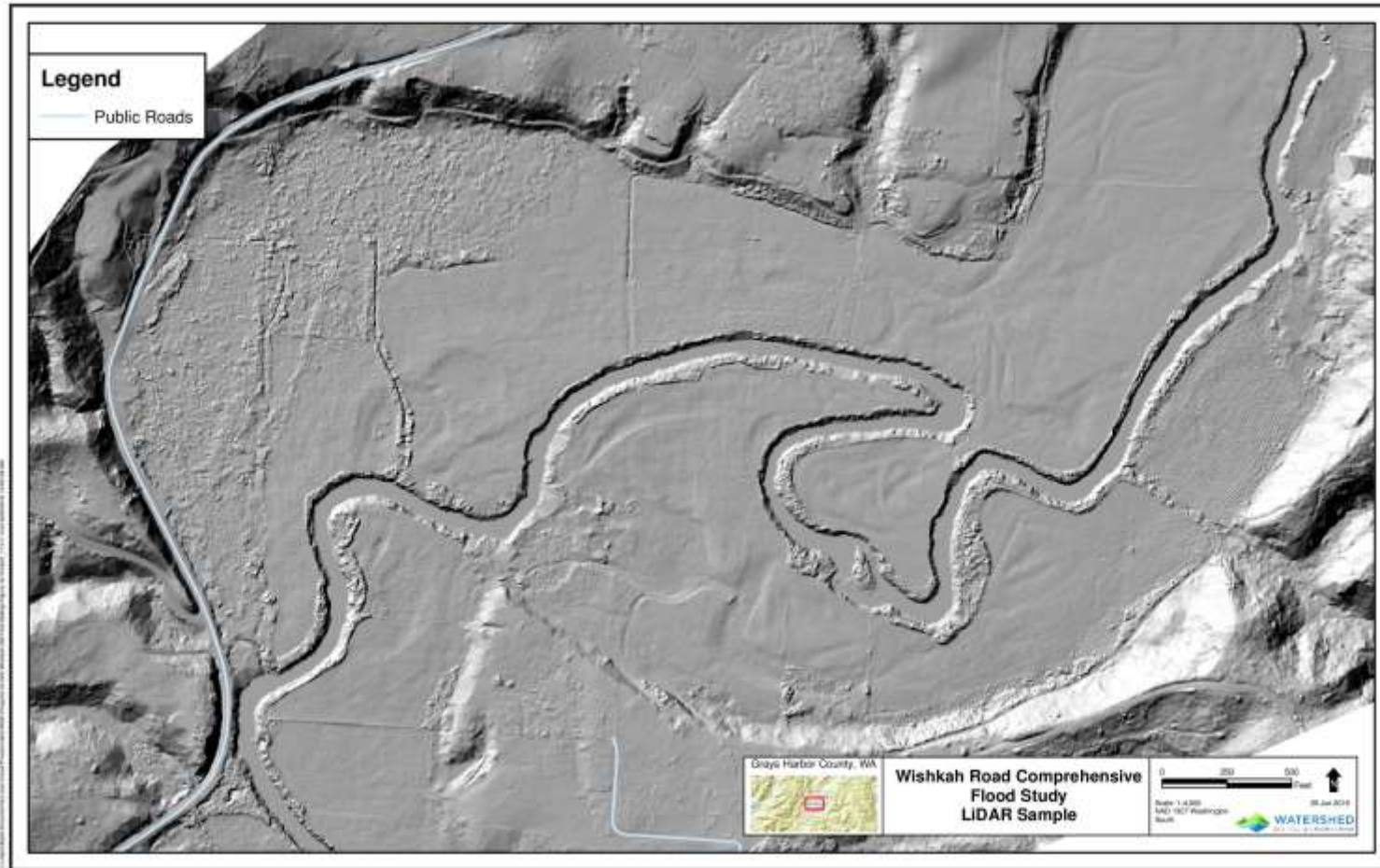
- Reach Scale Assessment
- Reduce or Eliminate Flooding
- Cost Effective
- Separate from Floodwall project



How did the project originate?

- Road frequently closed due to flooding
- Kersh-Wishkah Flood Levee/Flood Wall project
- WSE review
 - *Suggested reach scale study*
 - *Cost/Benefit analysis*
- Flood Authority funded this study
- WSE Selected in competitive process

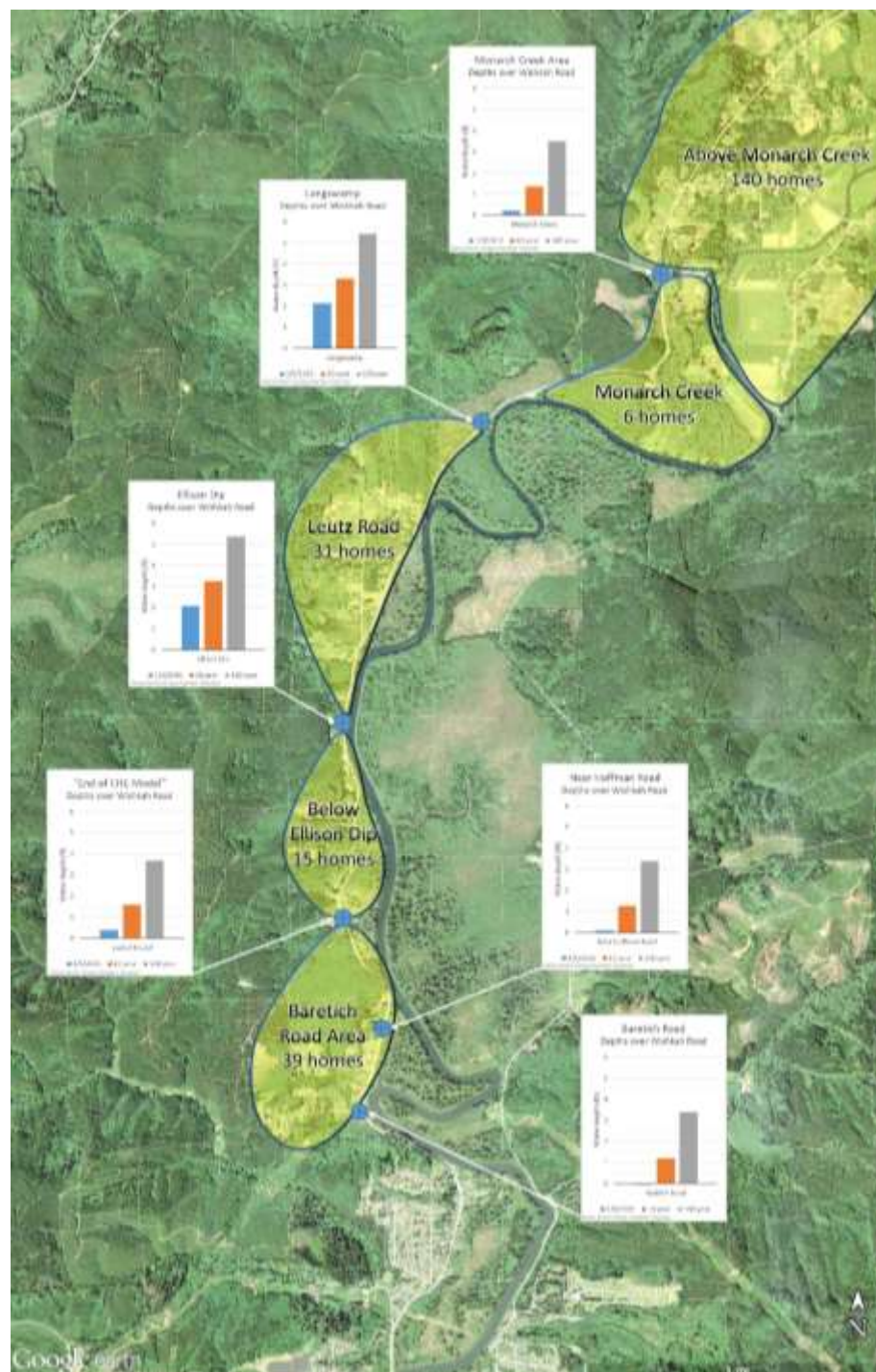
Project Process: Part 1



- Assess Existing Conditions
 - Flooding History
 - Road Closures
 - Topographic (LiDAR) Data
 - Bathymetry (Channel Survey)
 - Hydrologic Analysis
 - *Wishkah River Flow*
 - *Tidal Water Levels*
 - Hydraulic Modeling of Existing Conditions
 - Define Flood Reduction Alternatives

Project Process: Part 2

- Alternatives Analysis
 - Screen for Feasibility
 - Preliminary Designs
 - Additional Analysis
 - *Hydraulic Modeling*
 - *Geotechnical*
 - *Other Considerations*
 - Benefit/Cost Analysis
 - Preferred Alternative
 - Scope & Schedule for Final Design & Permitting



Timeline

Part 1

- Physical Data Gathering
May-June 2016
- Historical Data
June-September 2016
- Existing Conditions Assessment
July-September 2016
- Alternatives Discussion Meeting
October 2016

Part 2

- Preliminary Designs & Permitting Strategies
November - December 2016
- Additional Analyses
January – April 2017
- Preferred Alternative
May 2017



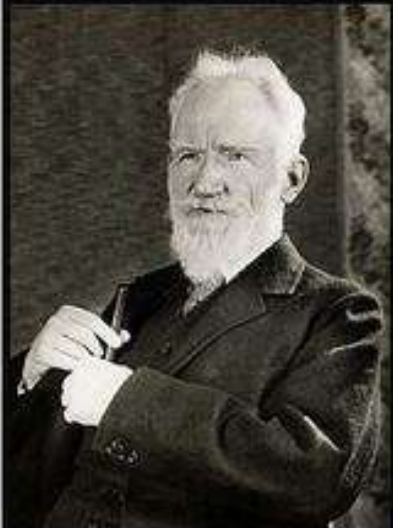
Why do you need to be involved?

Your experience matters!

- We want to hear your story

Share experiences & ideas

Now is the time to speak up



If you have an apple and I have an apple and we exchange these apples then you and I will still each have one apple. But if you have an idea and I have an idea and we exchange these ideas, then each of us will have two ideas.

(George Bernard Shaw)

izquotes.com

Why do you need to be involved?

Share knowledge and help us refine study direction

Contribute to recommendations

✓ Public Meetings

Next meeting in October 2016

✓ EZ View website

www.ezview.wa.gov

*Scroll down to Grays Harbor County –
Wishkah Road Comprehensive Flood Study
Project*

✓ Call or E-mail WSE

206-521-3000

mark@watershedse.com

✓ Call or E-mail GHCOG

360-537-4386

vcummings@ghcog.org

How do I participate?

Questions?

Comments

Ideas



Group Breakout

Where do you see most frequent flooding of Wishkah Road?

Pictures?

How frequently does flooding affect you?

Dates?

How significant is flooding of Wishkah Road to your every-day life?

What are your primary concerns with respect to flooding of Wishkah Road?

What do you think the County should consider?

What do you think would be a reasonable cost?



Wrap Up

Next Steps

- Finalize survey (bathymetry & LiDAR)
- Incorporate your input
- Existing Conditions Analysis
- Alternative Development

Next Meeting

- Alternatives Discussion
- October, 2016

Larry Karpack & Mark Indrebo

Watershed Science & Engineering
206-521-3000
mark@watershedse.com

Vicki Cummings

Grays Harbor Council of Government
360-537-4386
vcummings@ghcog.org

Thank You

