

The background of the slide is a photograph of a wide river or lake. In the distance, a dense forest of bare trees covers a hillside. On the left bank, there is a small building with a red roof and a tall, white, cylindrical structure. The water is calm, reflecting the sky and the surrounding landscape. The overall tone is somewhat muted, with a lot of browns and greys from the trees and water.

Long-Term Strategy Assessment

Getting from here to there...

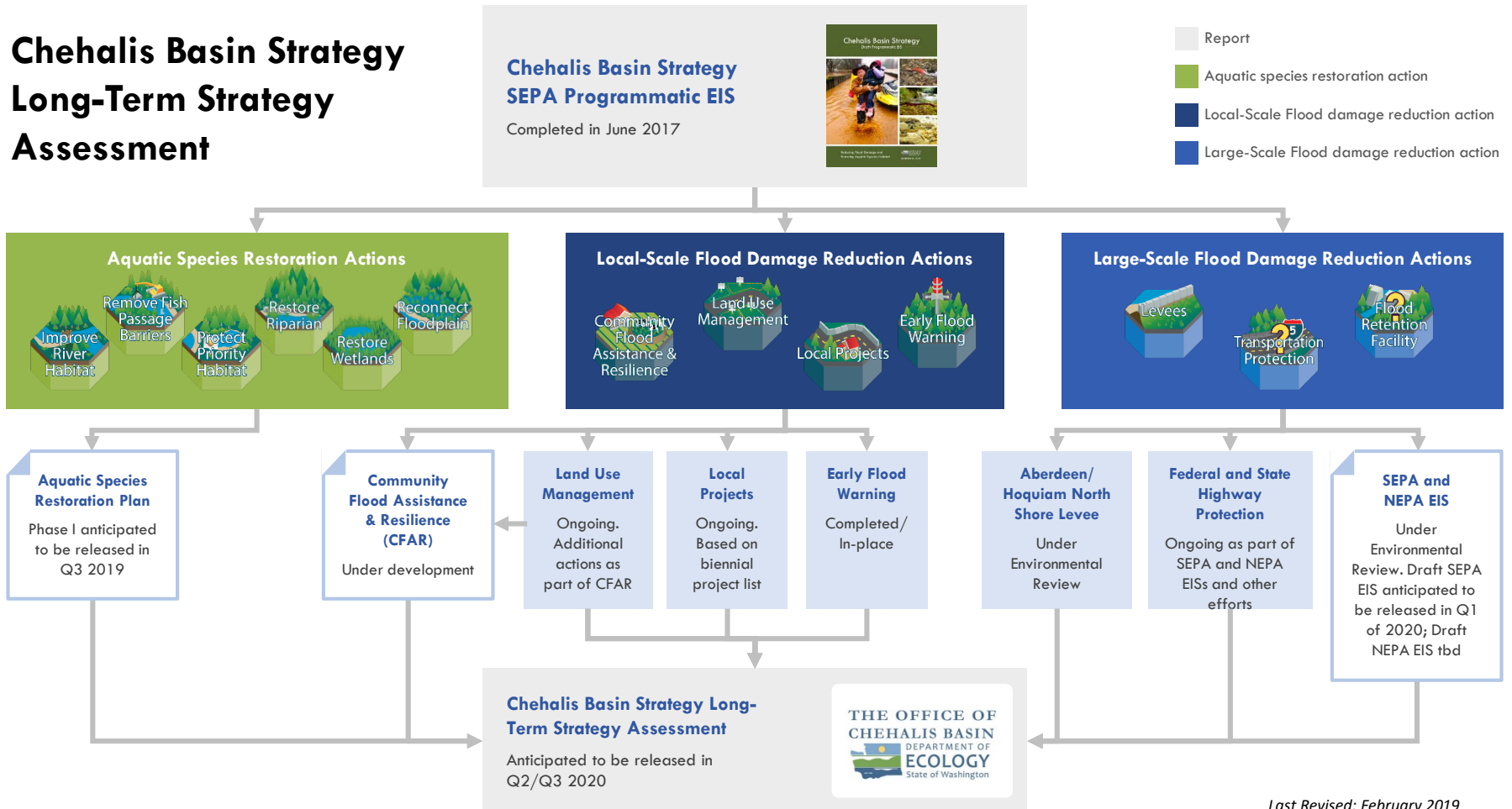
Presentation to the Chehalis Basin Board
By Andrea McNamara Doyle, OCB Director
June 6, 2019

Integrating the Elements

2

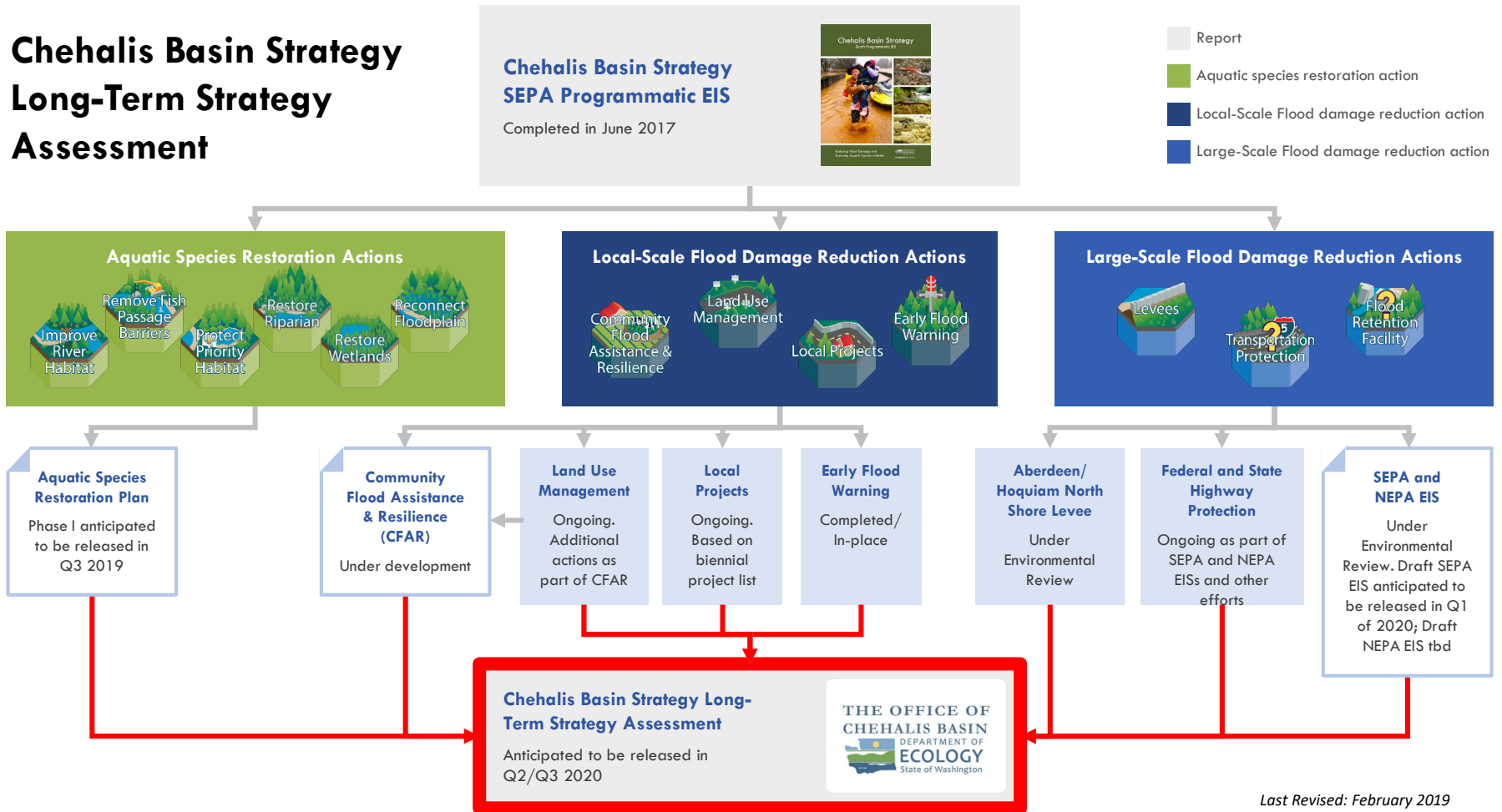


Chehalis Basin Strategy Long-Term Strategy Assessment



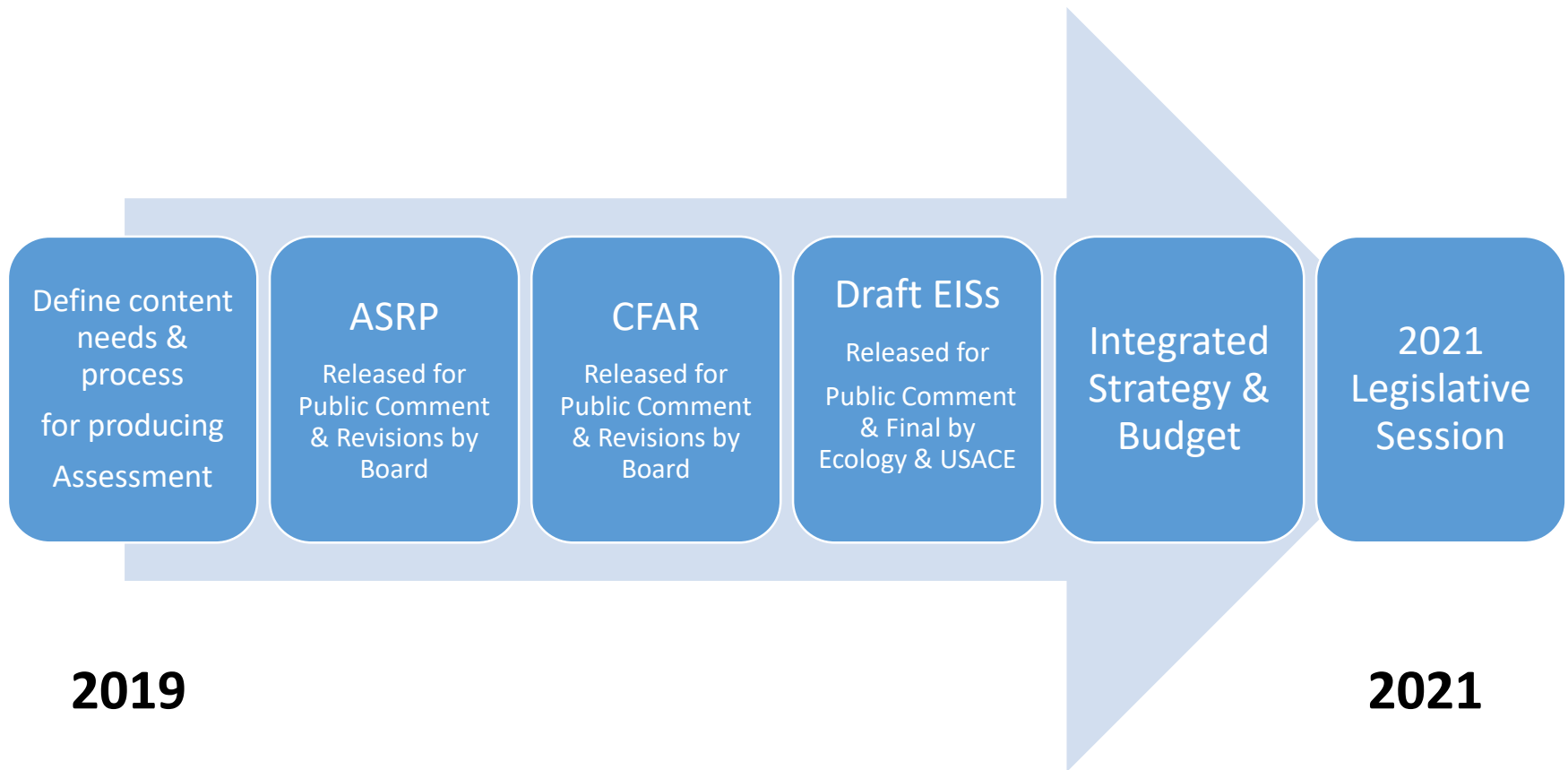
Last Revised: February 2019

Chehalis Basin Strategy Long-Term Strategy Assessment



Last Revised: February 2019

Roadmap for Timing of Major Elements



More work ahead needed on...

Facility Costs & Operations

Feasibility of options for mitigating impacts identified in EIS, and their relationship to ASRP

Building landowner willingness for ASRP & CFAR

Partnering with local governments on current and future approaches to land uses

Calibrating overall level of investment relative to overall benefits of integrated strategy



More work continued...

Sequencing priority investments and providing assurances of continued future support

Defining long-term governance, roles & responsibilities for management decisions

Defining and quantifying success of actions

Community outreach and education

Making the case for long-term funding



Approaches will differ by issue...

For each of these issues, the Board, Staff, and Stakeholders will need to collaborate on:

- Generating ideas
- Filling information gaps
- Exploring feasibility
- Evaluating desirability
- Understanding others' views and positions
- Revising ideas
- Finalizing recommendations

To enable the Board to reach informed, consensus-based decisions for the long-term strategy assessment