



ASRP Early Action Reach Restoration Efforts

June 7th, 2018

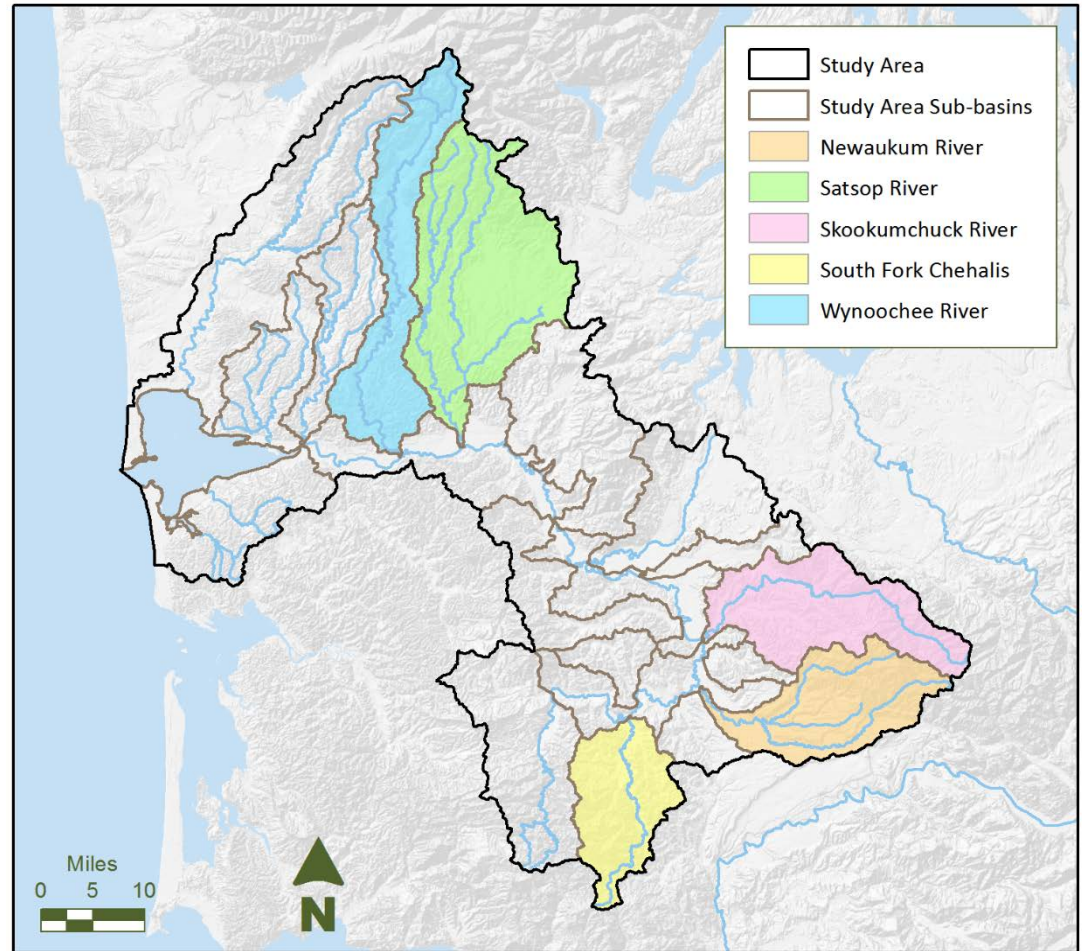
Overview

- Overview of the Design Teams developing reach-scale restoration designs
- Describe the design process
- Describe next steps

Early Action Reach Sub-Basins

5 sub-basins selected for early action reach restoration efforts.

- Newaukum River
- South Fork Chehalis River
- Skookumchuck River
- Satsop River
- Wynoochee River



Design Teams

For each sub-basin a Design Team has been established (five total).

Design Teams include:

- Conservation Districts
- Lead Entity/Coast Salmon Partnership
- WDFW
- Design Firms (Inter Fluve & NSD)

Design Teams

Each Design Team has been tasked to:

- Drive design development
- Evaluate design options based on landowner and habitat needs.
- Identify lessons learned
- Produce design documents
- Coordinate with Permitting Team

Design Teams Work Plan

Description	Estimated Timeframe
Kick-off the Design Teams	May '18
Gather data, assess alternatives, and select restoration actions in each sub-basin	Summer '18
Conceptual design	Fall '18
Preliminary design and apply for permits	Winter '18-'19
Final design	Spring/ Summer '19

Ongoing Efforts

Design Teams determining which reaches to move into conceptual design Phase

- Need to narrow down the number of potential reaches to focus efforts.
- Criteria has been developed to evaluate reaches

Criteria

Categories for the proposed evaluation criteria

Ecological Metrics

Landowner Support

Natural Process

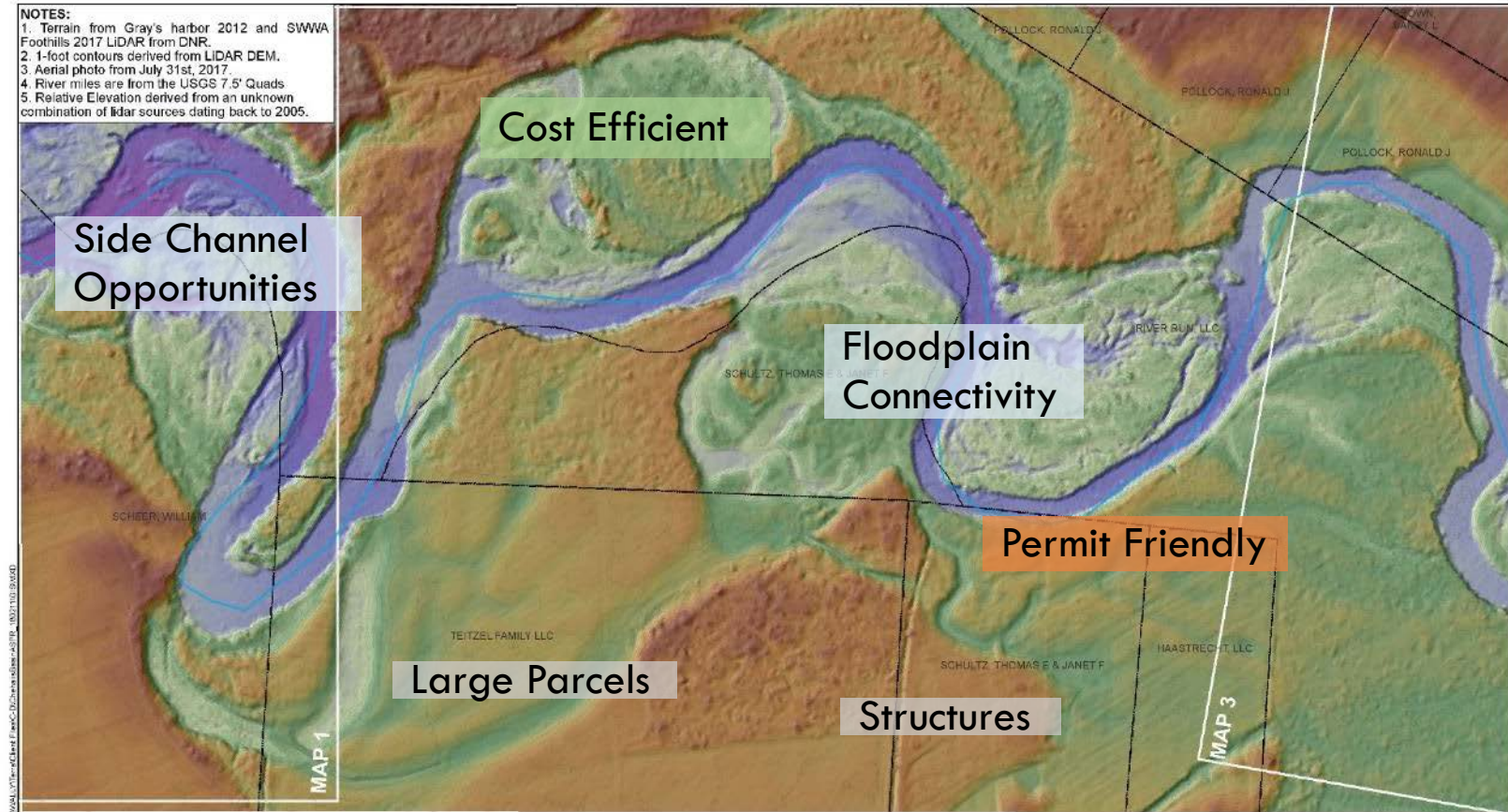
Fish & Other Species Use

Risk & Public Safety

Permitting

Project Unit Cost

Reach Specific Considerations Example



Next Steps

- Identify two (or one) reaches per sub-basin for detailed evaluation
- Conservation Districts lead outreach to landowners
- Meet with landowners to discuss needs and discuss restoration alternatives
- Goal to identify one final reach per sub-basin for conceptual design (Fall 2018)