

# Restoring Fish Passage at WSDOT Stream Crossings

## **Chehalis Basin Board Meeting Program Overview January 9, 2020**

Paul Wagner  
Biology Branch Manager  
Environmental Services Office

Kim Mueller, P.E.  
Fish Passage Delivery Manager  
Environmental Services Office

Roger Millar, Secretary of Transportation

Keith Metcalf, Deputy Secretary of Transportation

# WSDOT Fish Passage Program



Partnership with WDFW since early 1990's  
Fish barrier inventory & prioritization

Statewide:

- 7,401 WSDOT culverts evaluated
- 3,855 culverts in fish bearing waters
- 2,052 fish passage barriers identified

Correction of barriers:

- 345 corrections to date
- 1,155 miles of stream habitat with improved access

Data from 2019 WSDOT Fish Passage performance report



# WSDOT & the Federal “Culvert” Injunction

- ❑ WSDOT has about 2,000 fish barriers statewide
- ❑ 1,001\* barriers subject to the Federal Injunction as of June 2019
  - ✓ ~413\* barriers with significant habitat address 90% blocked habitat\*\* -- Must be corrected by 2030
  - ✓ An additional 588\* must be corrected at the end of the structure’s life, or as part of a transportation project
  - ✓ 66 barriers corrected through 2018 Construction Season (another 12 in 2019)



**Area Covered by the 2013 Injunction**

\* Based on current known barriers, we are required to re-inventory regularly.

\*\*For the purpose of implementing the injunction, habitat gain is measured from the barrier to end of salmon habitat regardless of other barriers.

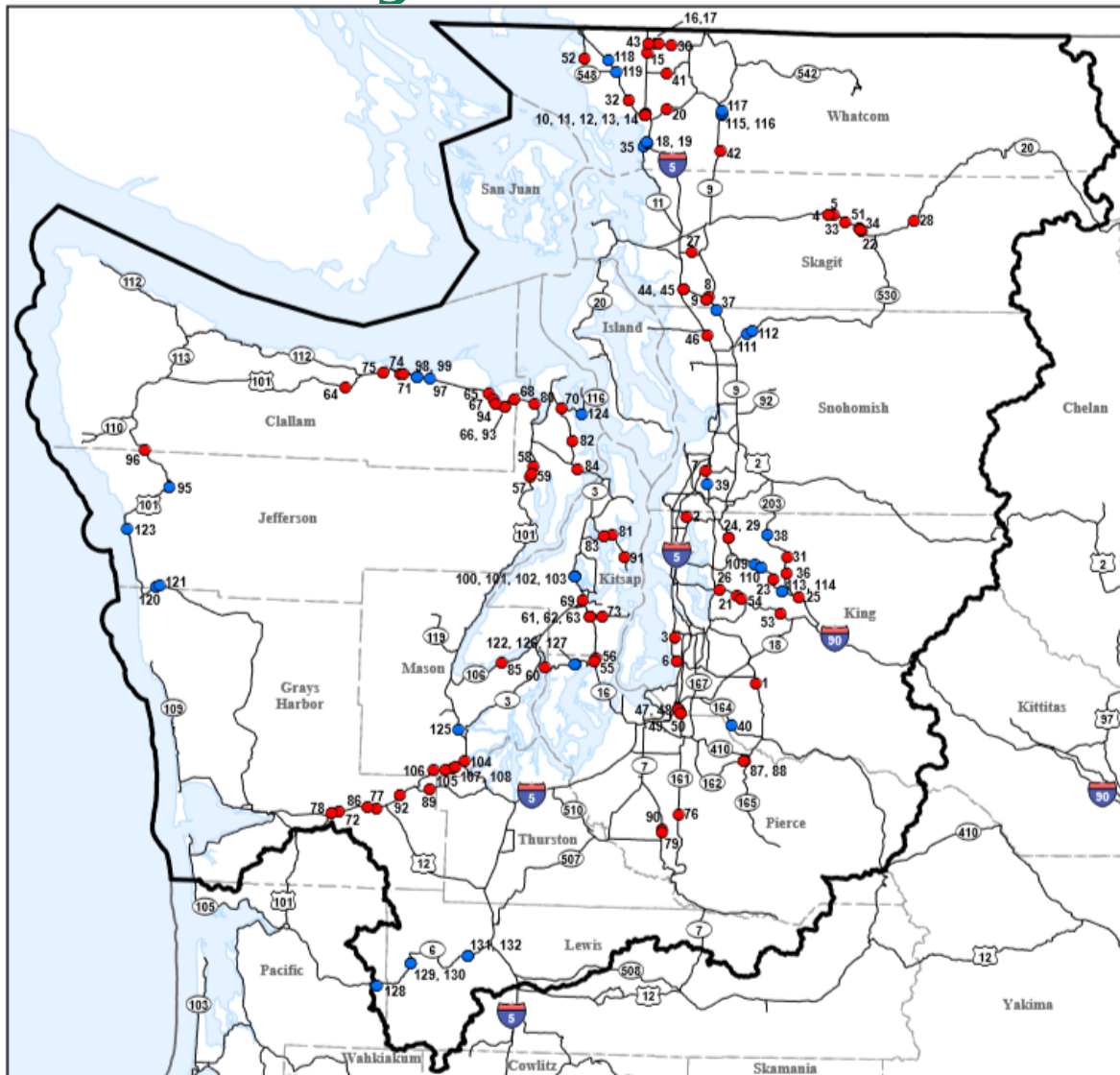
# Investment Level For Injunction Compliance

	To Date 2013- 2019	Current Biennium 2019- 2021	2021- 2023	2023- 2025	2025- 2027	2027- 2029	2029- 2030	Total
<b>Current Funding</b>	\$185M	\$275M	\$78M	\$79M	\$22M	\$53M	\$33M	\$725M
<b>Total funding needed to comply with the Injunction</b>	\$185M	\$275M	\$726M	\$730M	\$735M	\$740M	\$390M	\$3.8B
<b>Additional funding required</b>			\$648M	\$651M	\$713M	\$687M	\$357M	\$3.1B
<b># Barriers (completed)</b>	66	24	90-110	115-130	115-130	115-130	30-40	515-540
<b>% Habitat</b>	24%	10-15%	20-25%	9-13%	7-11%	5-9%	1-3%	90%+

## NOTE:

- Based on current known barriers. We are required to re-inventory regularly.
- 19-21 is Current Law with 601 timing adjustment (does not change current law total)
- Total compliance funding for 2021-23 and beyond includes:
  - \$9-10M/biennium outside the case area
  - \$10M-\$31M/biennium to address culvert failures within injunction area

# Delivery Plan: 19-21



**WSDOT Stand-alone Fish Passage Projects  
planned for Design and Construction 19-21  
within the Culvert Case Area**

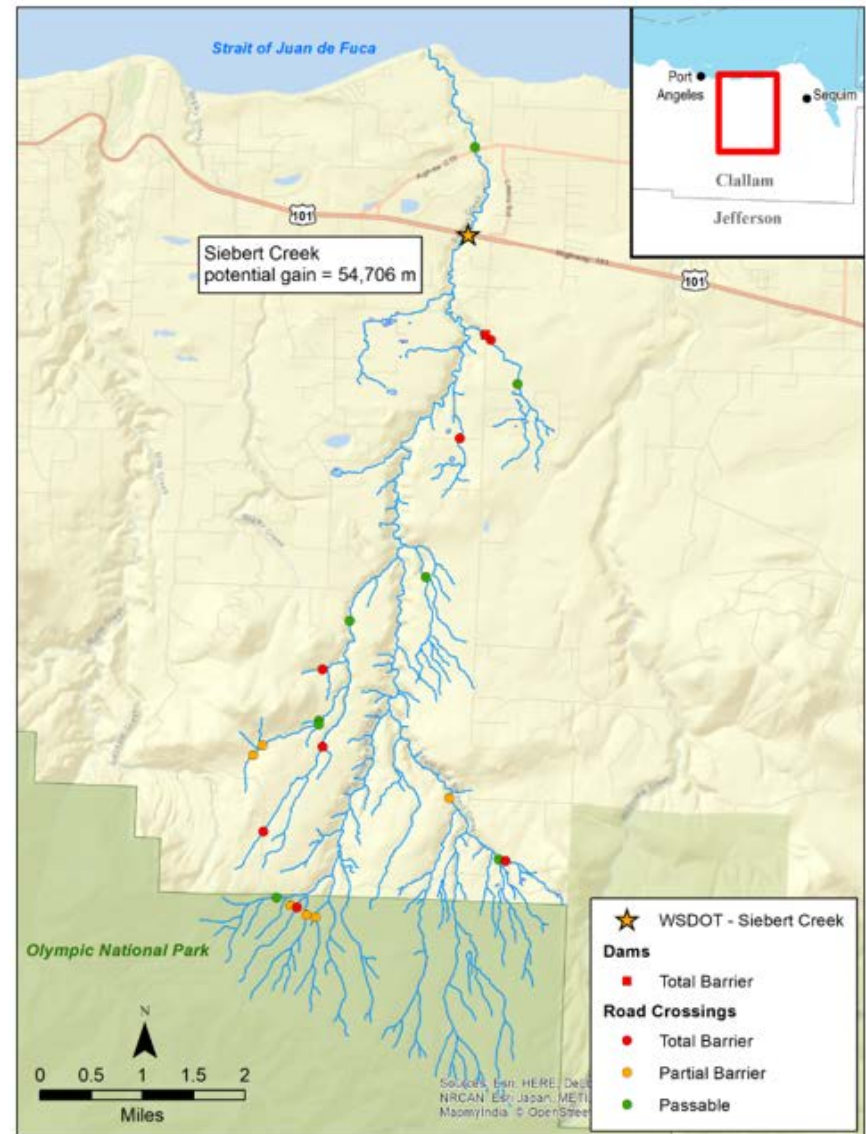
## Legend

- Construction 19/21 (39)
- Design 19/21 (93)
- ▭ US v. WA Case Area Boundary

# Delivery Plan Prioritization Principles

- Improve Habitat Access
- Partnership Opportunities
- Downstream Barriers
- Public Impacts
- Project Readiness
- Tribal Input on Priorities
- Geographic Bundling
- Culvert Condition

*Siebert Creek with upstream and downstream barriers  
34 miles of potential fish habitat 31 miles immediately  
accessible to fish when WSDOT barrier is corrected*

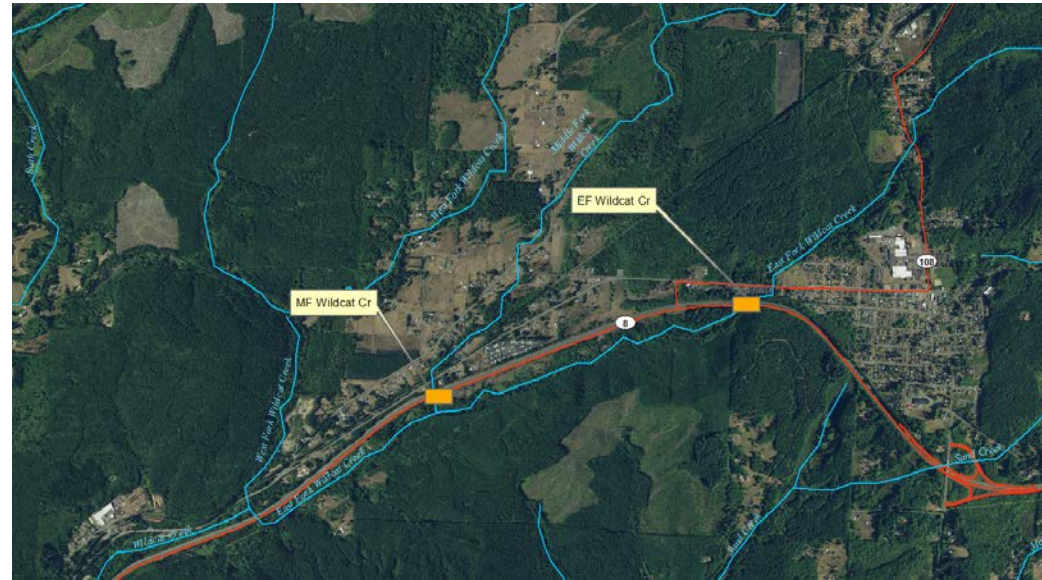




# SR 8 East Fork and Middle Fork Wildcat Creek

## Fish Passage Deficiencies:

- EF Wildcat was a barrier due to high velocities (13.6 miles of habitat)
- MF Wildcat had excessive water surface drops (blocking 18.6 miles habitat gain)
- Project provides a combined total of 32.2 miles of stream with improved access.



## Construction Efficiencies:

- Permitting allowed Contractor to do work over water year-round (in-water work only during summer fish window)
- Staging Concept – Build detour in order to maintain two lanes of traffic in each direction during construction



**East Fork Before**



**Middle Fork Before**



# SR 8 Middle Fork Wildcat Creek WRIA 22

- Barrier was 20 foot box culvert with excessive drop
- Replaced with 110' span bridges; large wood and channel work
- Completed in 2018
- \$7.4 M estimated cost (East Fork wildcat Creek was \$9.8 M for a total project cost of \$17.2M)
- Benefits Chum, coho, steelhead, searun cutthroat, & resident trout

Before



During



After





# SR 8 East Fork Wildcat Creek WRIA 22

- EF Wildcat two 160' span bridges; large wood and channel work
- \$9.8 M estimated cost
- 13.6 miles habitat gain
- Chum, chinook, coho, steelhead, searun cutthroat, & resident trout

Before



During



After



# Contact

For more information about  
Restoring Fish Passage at WSDOT Stream Crossings, please visit our website:  
<https://www.wsdot.wa.gov/Projects/FishPassage>

Paul Wagner, Biology Branch Manager  
Washington State Department of Transportation  
Environmental Services Office  
(360) 705-740, [Paul.Wagner@wsdot.wa.gov](mailto:Paul.Wagner@wsdot.wa.gov)

Kim Mueller, P.E., Fish Passage Delivery Manager  
Washington State Department of Transportation  
Environmental Services Office  
(360) 705-7404, [Kim.Mueller@wsdot.wa.gov](mailto:Kim.Mueller@wsdot.wa.gov)