

The Taholah Village Relocation

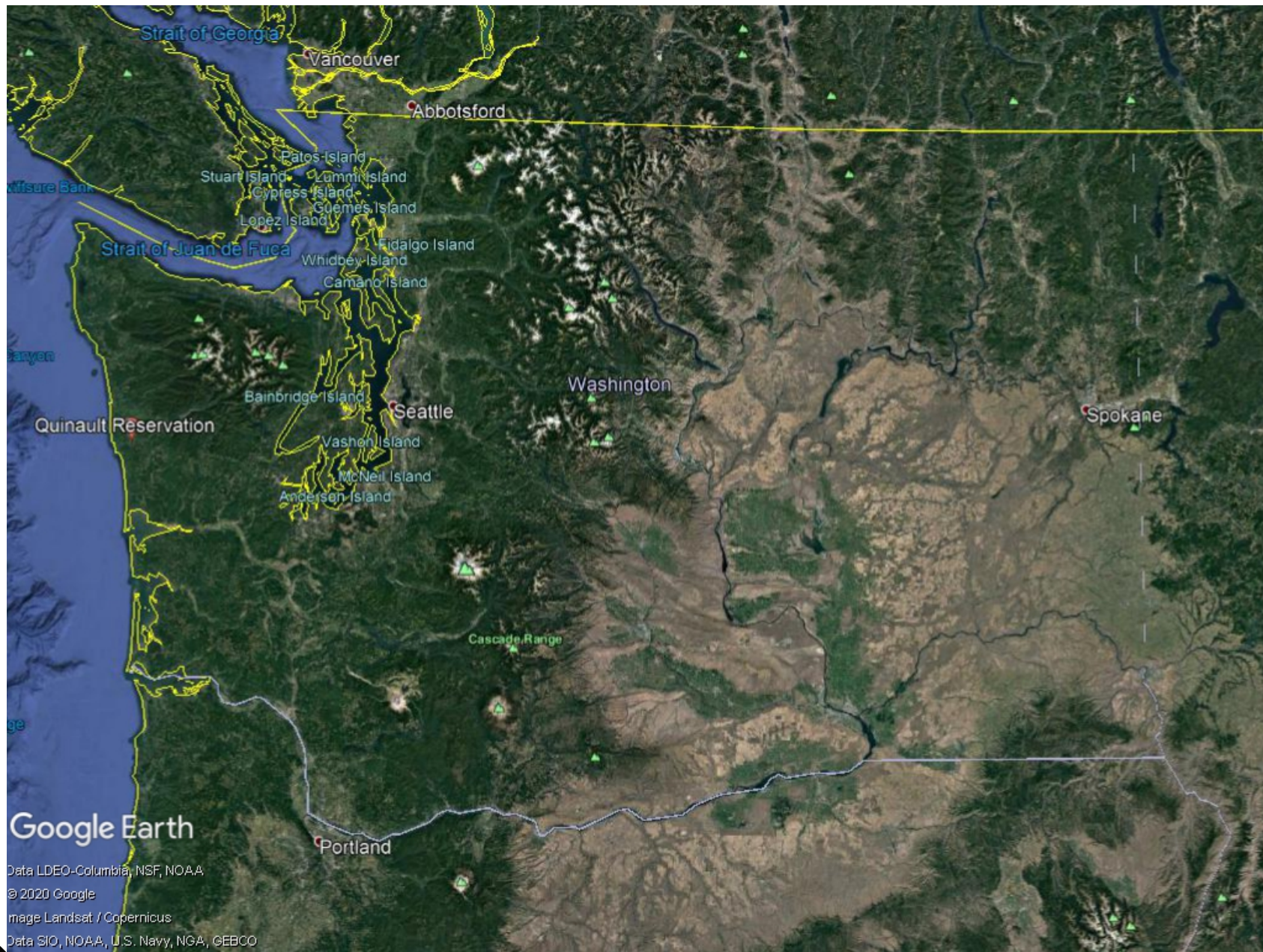


Kelsey Moldenke

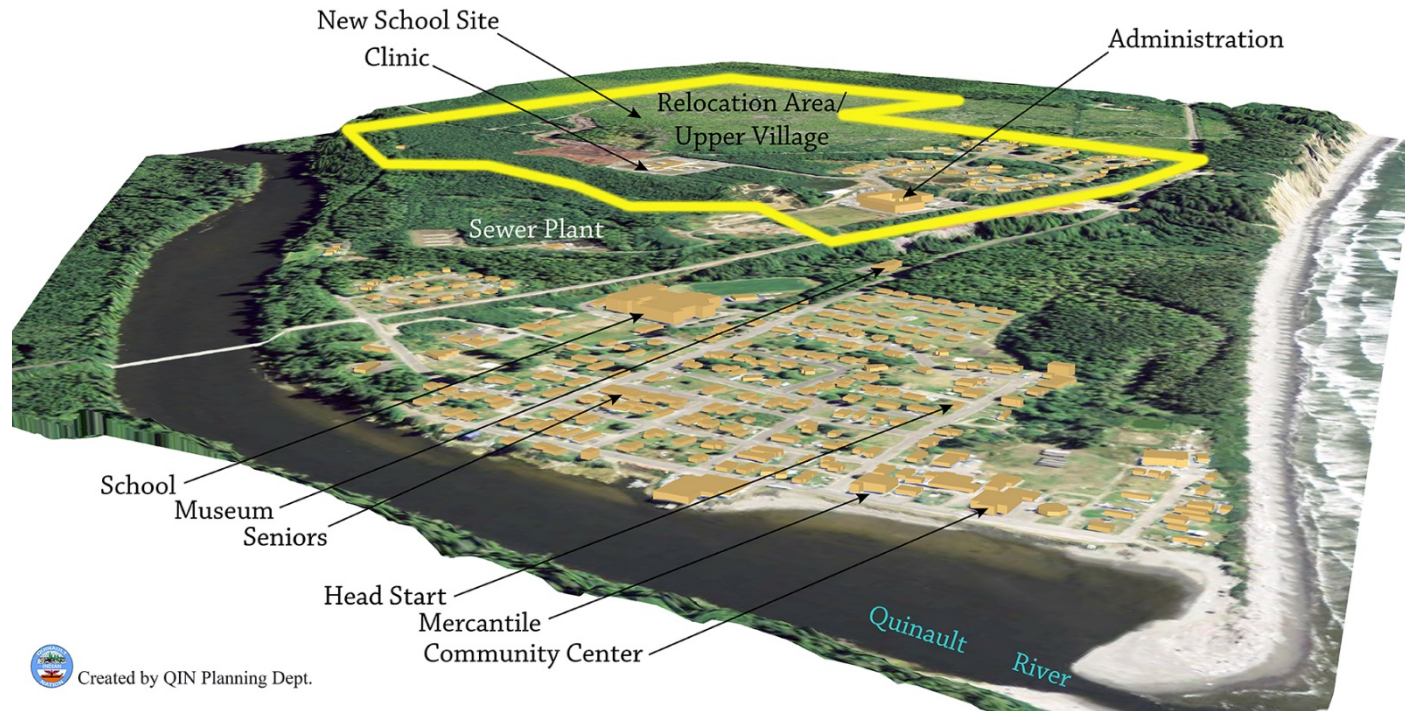
Senior Planner

February 4, 2021





Why Relocate the Village?



Hazards

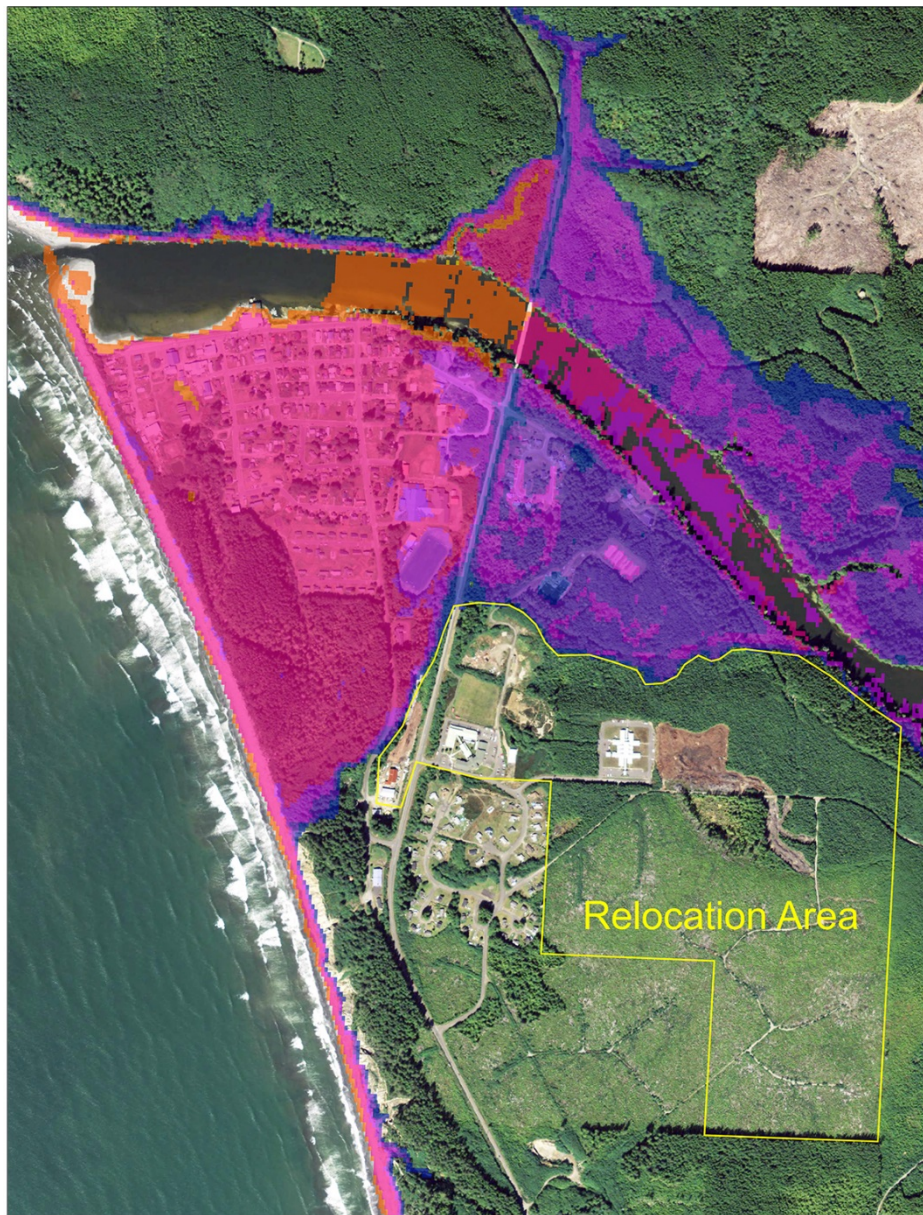
- Dual threats
 - Sea Level Rise
 - Tsunami from 9.0 earthquake
 - Cascadia Subduction Zone similar to tectonics that caused Indonesian tsunami in 2004
 - 5 to 20 minutes escape time (if good conditions)



Late 1800's
Sketch of Coastal
Flooding in Taholah



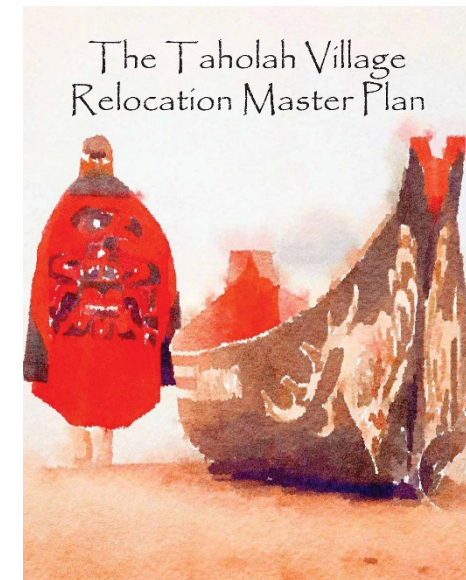
Inundation Depth



Inundation Depths in Taholah from 2015 WaDNR Model

Legend

Relocation boundary 3062	Inundation Depth (meters)	6.1 - 9 (20 to 30 ft)	15.1 - 18 (49 to 59 ft)
		9.1 - 12 (30 to 40 ft)	18.1 - 21 (59 to 69 ft)
		12.1 - 15 (40 to 49 ft)	21.1 - 23.1 (69 to 76 ft)
		0.1 - 3 (<10 feet)	
		3.1 - 6 (10 to 20 ft)	





Community Input

April 23, 2014
Taholah Village Relocation Master Plan

Questions for the Community

1. When you think about the lower village of Taholah, what descriptive words come to mind?
2. What do you like about your community? What makes it special?
3. What is your vision for the new, upper village?
4. What characteristics would you bring from the lower village to the new upper village?
5. What type of housing would you like to have in the upper village?
Single Family____ Apartments____ Duplex____ Other____
6. What don't you have in the lower village that you want in the new, upper village?
7. What is most important for your children in the new village? Select 3.
 - ☐ Playgrounds
 - ☐ Open/wild spaces
 - ☐ Trails to school/stores/neighbors
 - ☐ Safe streets
 - ☐ Other



Prior community prioritization
Newspaper articles

Community Surveys:

Handed out at meetings,
On-line, Web Site and Door-
to-Door



The Vision

- Family friendly village where **children are safe**.
- Parks and homes reflecting **cultural awareness** and pride; cedar, salmon, berries, in paintings, poles, canoes and signage.
- The village will be **pedestrian-friendly but auto-accessible**, with safe, lighted, wide sidewalks, and interconnected trails.
- We see an **organic farm** where we produce our own vegetables, fruit, potatoes, corn, and other good food.
- We also see green spaces with plants traditionally used by community members providing a **connection to our heritage and nature**.



Development Needs

Housing

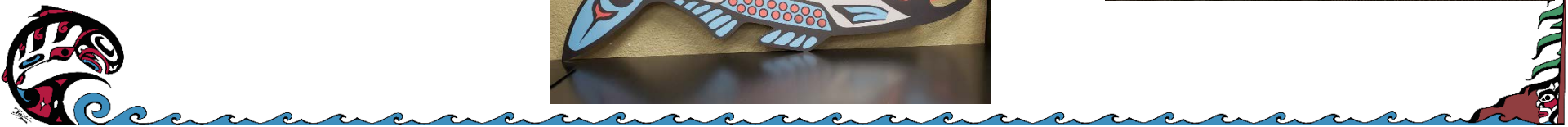
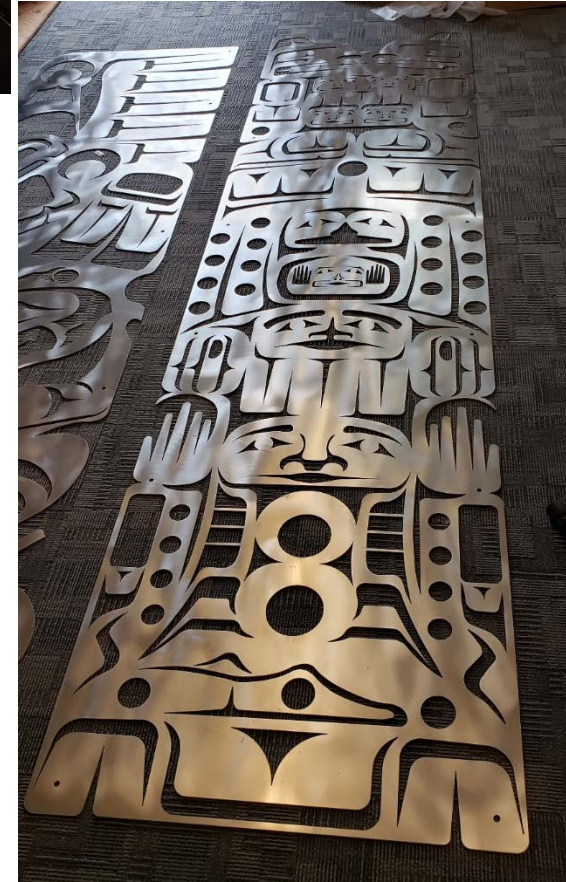
- 175 Homes and 650 people
- 129 Families on Housing Authority Waiting List

Community Buildings

- Administrative Offices, QNEB, QHA, Emergency Services, Courts, Post Office, Child & Health, Social Services = 175,000 SF
- 80,000 SF School



Culture



Concept



Energy Park



A way to safely shelter in place for months



Implementation - Funding

Federal Programs

- USDA Rural Development
- Federal Highway Administration
- FEMA
- Housing and Urban Development/ICDBG & IHBG
- Indian Health Service
- Bureau of Indian Affairs

Other

- Washington State Depts. of Commerce/Health
- Private Funding /Foundations
- Community Investment Tax Credits
- Banks



Barriers to Funding

- Lack of Capital Project Funders, grants for planning, not construction
- Urban focus of efforts or for places that have experience disasters
- Costly Project with Many Aspects, no centralized system to cover multiple aspects
- FEMA/Sovereignty Issues, time
- Funds may come with strings attached
- Lack of data to match grant goals
- Re-insurance, bonds not really options



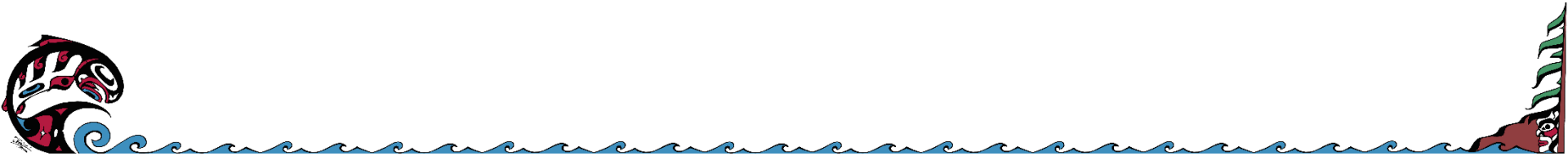
Partners

- Federal Agencies
- US Army Corps of Engineers FEST-A Team
- Bonneville Environmental Foundation
- Unitarian Universalist Service Committee First Peoples' Convening on Climate-Forced Displacement
- Isle de Jean Charles



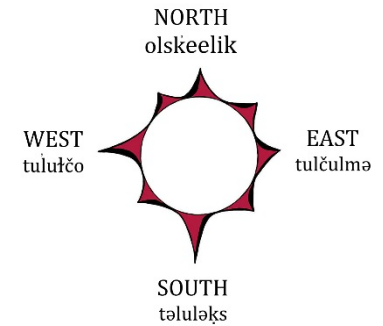
Buyouts

- No guarantee that people won't move to another flood area
- Takes up to five years; if house is damaged people are living in substandard housing until buyout comes through
- Land fractionation/Trust land
- People may have to leave their community
 - Tax dollars go elsewhere
 - Community cohesion

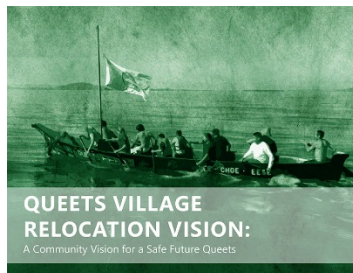


Where Do We Go Next?

- Grant Writing/Fundraising
 - Strategies to Help People to Relocate
 - Engineering/Architecture Plans/Build!
- One building down, so many to go!



- Moratorium in Lower Village
- Additional NEPA (Federal Environmental Review)
- New Staff (e.g. parks maintenance year-round)
- Continue Alternative Energy Projects
- Queets Relocation





Siokwil

kmoldenke@quinault.org

