



# AQUATIC SPECIES RESTORATION PLAN UPDATES

1/6/22

# TOPICS

1. 2021 accomplishments
2. Implementation structure roll out
3. Implementation report

# 2021 ACCOMPLISHMENTS

## PROJECTS

- ✓ Skookumchuck Early Action Reach
  - 1<sup>st</sup> Reach Scale project complete
- ✓ Marker 19 oxbow & fish passage
  - Lewis County Conservation District & Weyerhaeuser partnership
- ✓ Camp Creek fish passage barrier correction
  - Coordinated actions between Trout Unlimited and WSDOT

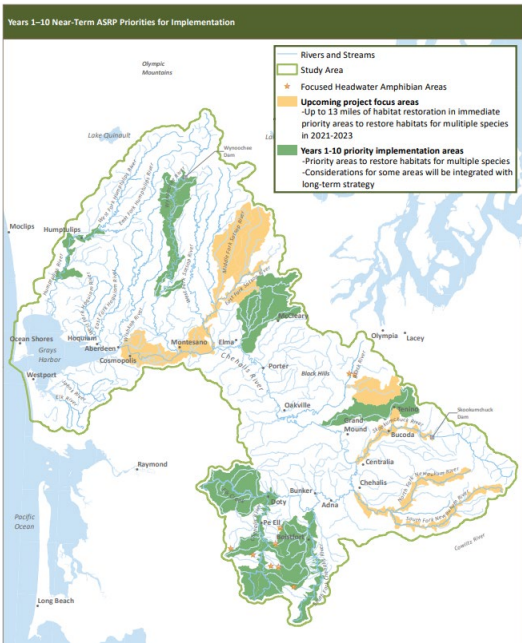




# 2021 ACCOMPLISHMENTS

## PLANNING

- ✓ Monitoring & Adaptive Management Plan
- ✓ Sequencing of restoration and protection actions for ASRP
- ✓ Implementation structure preparations



NEAR-TERM ASRP PRIORITY AREAS AND ACTIONS

Ecological Region	Geospatial Unit	Restoration Actions							Geospatial Unit Information			Priority Species or Habitat Focus	Limiting Factors From Highest Priority to Lowest
		Place Large Wood	Remove Fish Barriers	Reconnect/Restore Floodplain	Riparian Restoration	Beaver Ponds/Boles	Wetland Restoration	Acres of OSP Habitat Protection/Restoration	Number of Priority Barriers	Length of Primary River (miles)	Percent of Primary River Length Proposed for Restoration	Proposed Protection/Restoration (miles)	
Grays Harbor Tributaries	Middle Humptulips MS GSU	●	●	●	●			0	22.8	50%	11	● High Priority Core Habitats ● Early Riparian Restoration	Key Habitat, Temperature, Sediment Load, Habitat Diversity, Flow, Channel Length, Channel Stability, Predation
	Lower Satop MS GSU	●		●	●			0	6.6	50%	3	● High Priority Core Habitats ● Early Riparian Restoration	Key Habitat, Temperature, Habitat Diversity, Channel Length, Channel Stability, Predation, Flow, Sediment Load
	Lower EF Satop MS GSU	●		●	●			0	11.4	50%	6	● High Priority Core Habitats ● Early Riparian Restoration	Temperature, Key Habitat, Habitat Diversity, Predation, Channel Stability, Flow, Sediment Load
	Decker GSU	●	●	●	○	●		0	15.8	50%	8	● Unique At-Risk Habitat (protection)	Key Habitat, Temperature, Habitat Diversity, Obstructions/Barriers, Sediment Load, Predation, Channel Stability, Flow, Channel Length
	Bingham GSU	●	●	●	○	●		3	13.8	50%	7	● Unique At-Risk Habitat (protection)	Obstructions/Barriers, Key Habitat, Habitat Diversity, Channel Stability, Sediment Load, Predation, Flow, Temperature, Channel Length
Olympic Mountains	Dry Run GSU	●	●		○	●		5	6	50%	3	● Unique At-Risk Habitat (protection)	Obstructions/Barriers, Key Habitat, Channel Stability, Habitat Diversity, Sediment Load, Flow, Temperature, Predation, Channel Length

# ONGOING IMPLEMENTATION ROLL OUT

## PROJECT SPONSORS

- Request for Qualifications to determine sponsor eligibility for ASRP funds
- 14 successful applicants
- Re-opening RFQ in 2022 to grow sponsor list

# 2021-2022 ASRP PROJECT SPONSOR LIST

- Thurston Conservation District
- Capitol Land Trust
- Ducks Unlimited
- Mason Conservation District
- Trout Unlimited
- Washington Water Trust
- Forterra
- Washington Farmland Trust
- WA Department of Fish and Wildlife
- Lewis County Public Works
- Grays Harbor Conservation District
- Chehalis Basin Fisheries Task Force
- Wild Fish Conservancy
- Lewis Conservation District

# ONGOING IMPLEMENTATION ROLL OUT

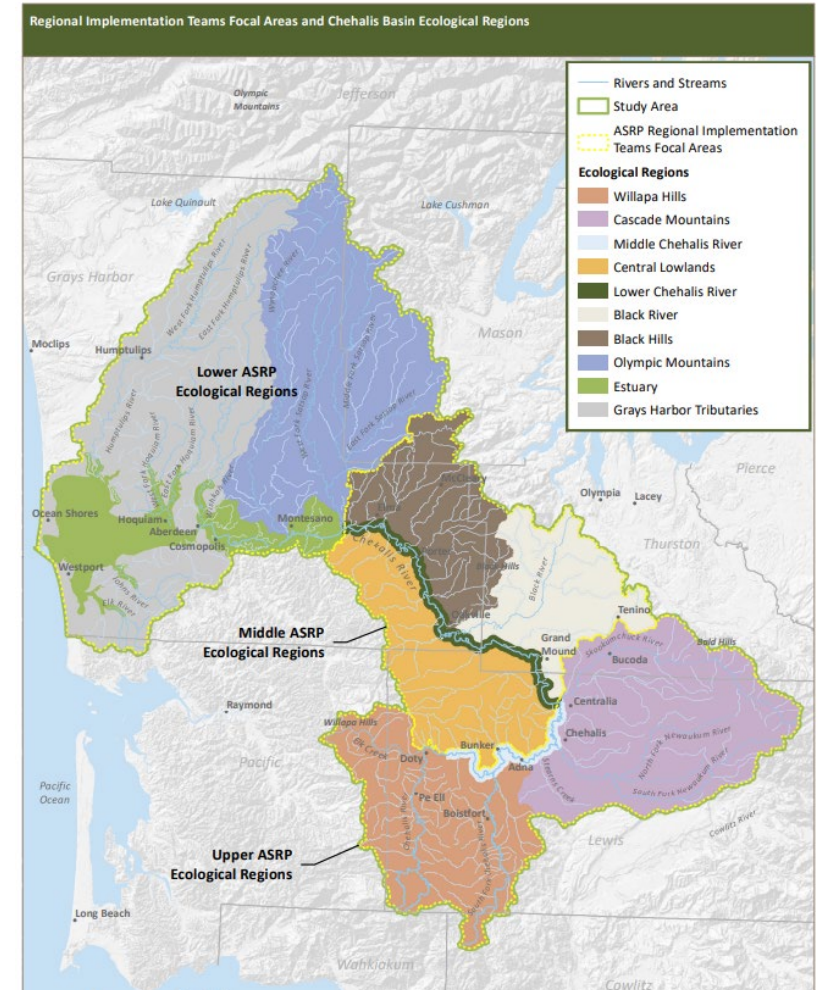
## PROJECT TECHNICAL REVIEW TEAM

- Request for qualifications to identify on-call project reviewers
- Re-opened RFQ to add alternate to team
- Engineering, restoration design, fluvial geomorphology expertise

# ONGOING IMPLEMENTATION ROLL OUT

## REGIONAL IMPLEMENTATION TEAMS

- Kick off held 1/4/22
- 3 teams to organize and collaborate on new project opportunities

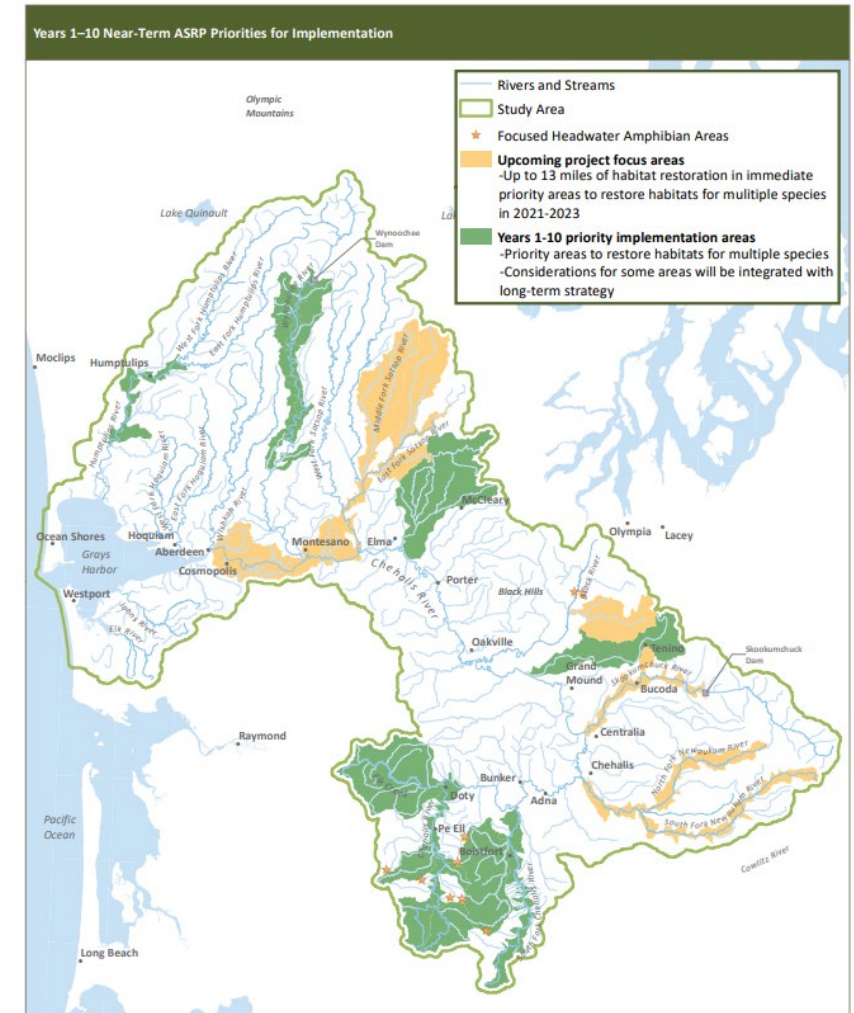




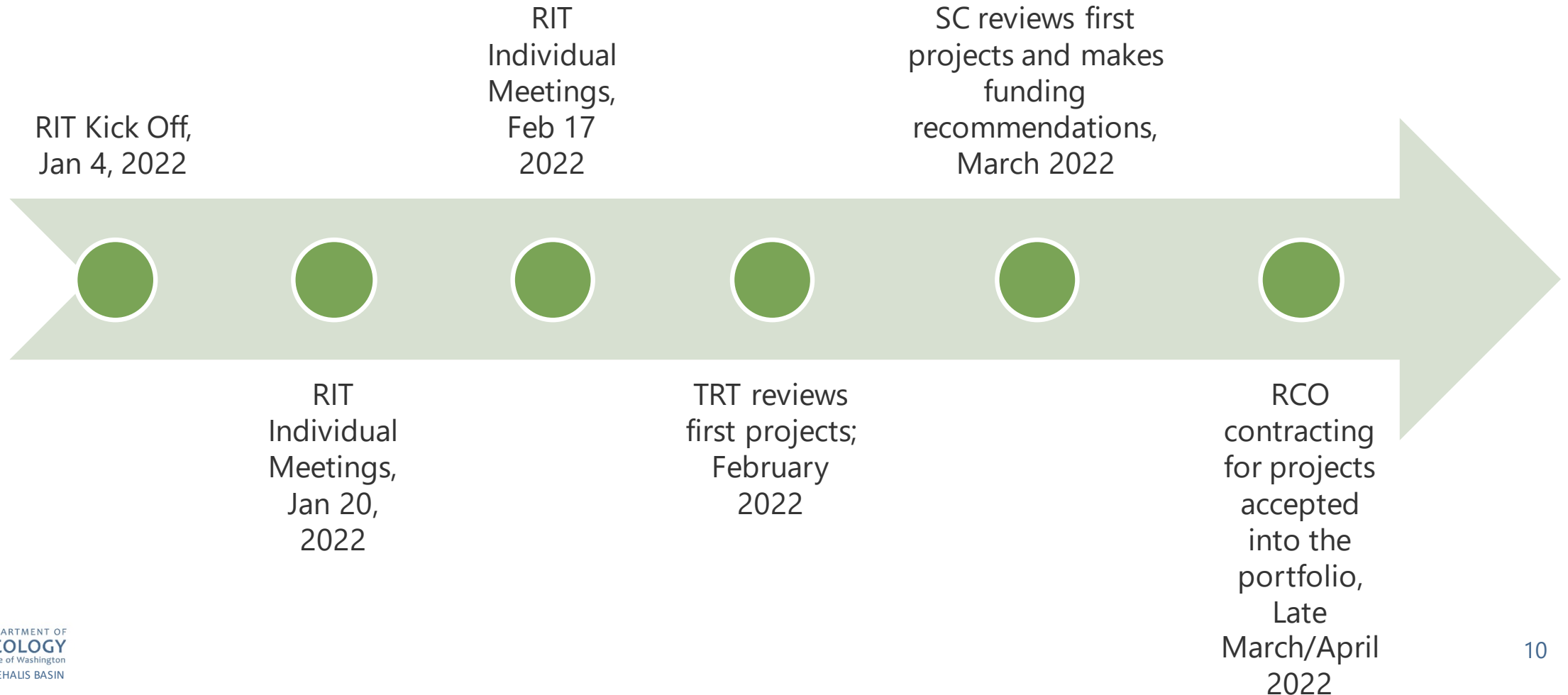
# ONGOING IMPLEMENTATION ROLL OUT

## PROJECT PORTFOLIO

- New projects vetted for portfolio inclusion starting in February
- Funding reserved for projects through completion



# PROJECT PORTFOLIO TIMELINE



# IMPLEMENTATION REPORT

## COMING SOON!

- 1<sup>st</sup> annual formal report to Board as part of ASRP Adaptive Management structure
- Highlights:
  - Accomplishments to date
  - Refinements to ASRP since 2019 publication
  - Implementation strategies & near-term priorities
  - How ASRP will track progress toward goals
  - & more!

# QUESTIONS OR DISCUSSION

