

The background is a light blue gradient with several realistic water droplets of various sizes scattered across it. Some droplets are at the top, some at the bottom, and some on the right side. They have highlights and shadows, giving them a 3D appearance.

NEW YEAR'S FLOOD

JANUARY 1st - 16th, 2022

MISSION 21-5133

EVENT SITUATION

- RAINFALL STARTING ON JANUARY 5TH, 2022, COMBINED WITH SNOW MELT HAS CAUSED RIVERS TO RISE. FLOOD WARNINGS HAVE BEEN ISSUED FOR THE NEWAUKUM RIVER NEAR CHEHALIS, THE CHEHALIS RIVER NEAR DOTY, CENTRALIA, AND GRAND MOUND, AND THE SKOOKUMCHUCK RIVER AT CENTRALIA.
- FLOOD PREDICTIONS AS OF 2000 HOURS ON JANUARY 6, 2022 ARE ANTICIPATING RECORD LEVELS FOR THE NEWAUKUM NEAR CHEHALIS, SKOOKUMCHUCK AT CENTRALIA, AND SKOOKUMCHUCK AT BUCODA.

EOC ACTIVATION LEVELS

- **LEVEL 1 – ROUTINE EMERGENCY** – ramp up for event (potential threat of flooding)
 - EOC Supervisor, Public Information Officer, Planning, and Liaison Officer
- **LEVEL 2 – ENHANCED OPERATIONS** – moderate event of flooding (Two sites flooding)
 - EOC Supervisor, PIO, Planning, Selected Liaisons, Operations, Logistics, other staffing as needed
- **LEVEL 3 – FULL ACTIVATION** –major flooding event (Multiple sites flooding)
 - EOC Supervisor, PIO, Planning, All Liaisons, Operations, Logistics, MAC (Policy Group)

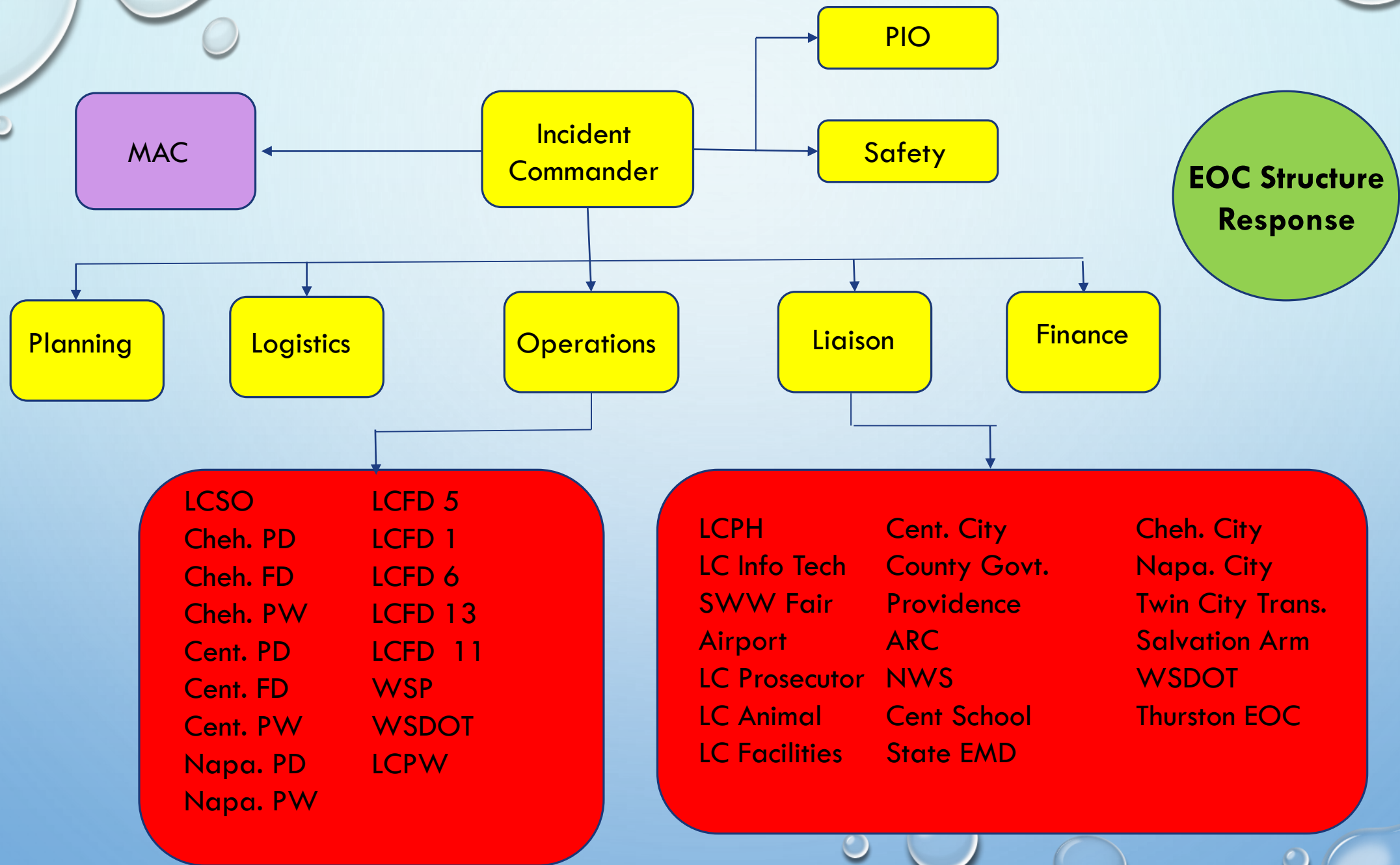
VIRTUAL EOC VS. PHYSICAL EOC

VIRTUAL

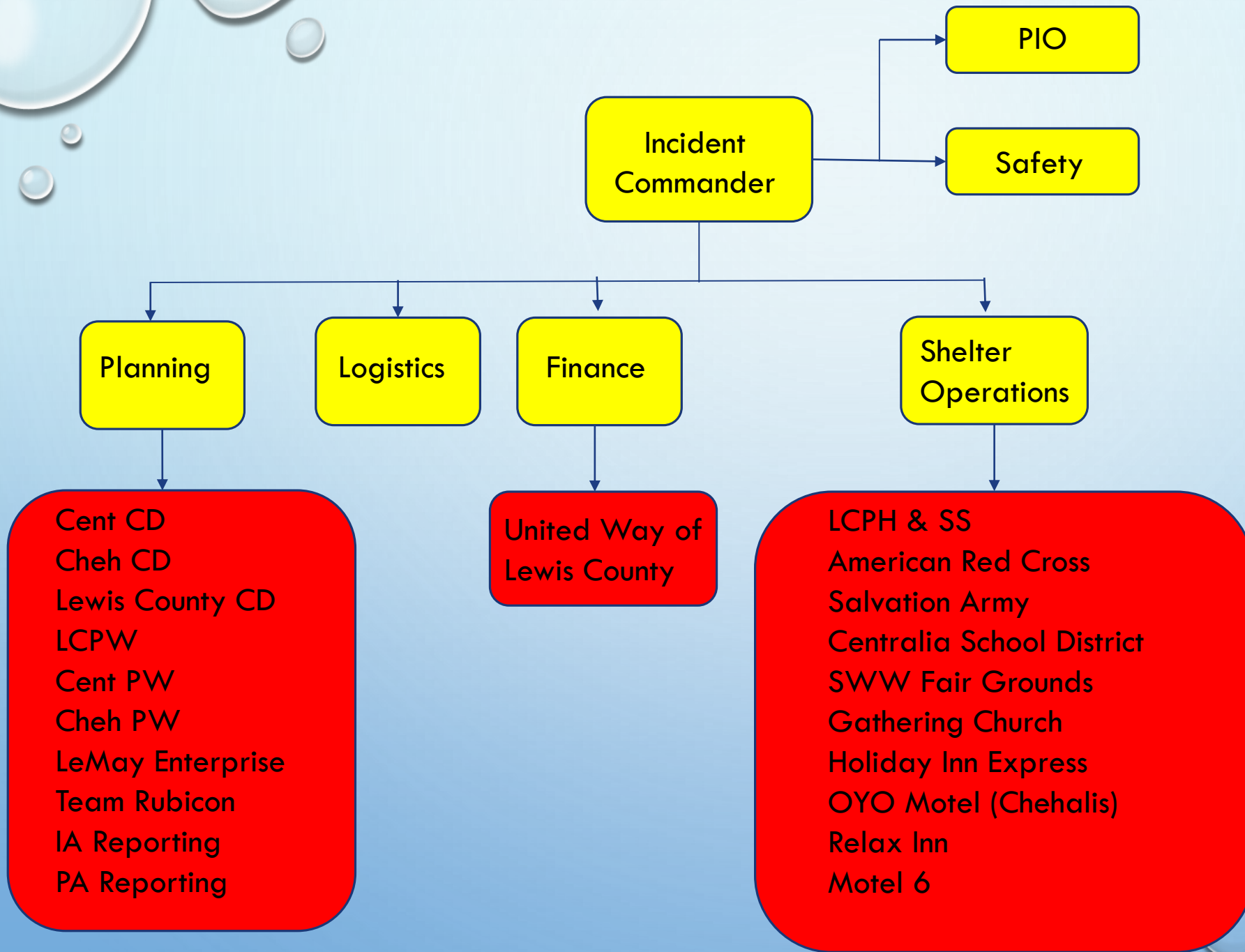
- THIS VIRTUAL EOC ALLOWS PEOPLE WHO NEED ACCESS TO THE INFORMATION TO HAVE IT IN REAL TIME (WebEOC). ALLOWS PEOPLE WITH MULTIPLE ASSIGNMENT BETTER TIME MANAGEMENT.
- A VIRTUAL EOC CAN HELP SUPPLEMENT THE WEAK AREAS IN CURRENT OPERATIONS. DURING TIMES OF CRISIS LIKE WITH THE COVID-19 PANDEMIC, IS ESSENTIAL TO SUCCESS.

PHYSICAL

- A TRADITIONAL EOC IS A PHYSICAL LOCATION WHERE STAFF MEMBERS GATHER TO MANAGE AN EMERGENCY. THERE CAN BE MANY PEOPLE IN THE EOC DURING AN EMERGENCY, SO IT TENDS TO BE A LARGE ROOM WITH A LOT OF COMPUTERS AND TELEPHONES. (STAFFING & EQUIPMENT & CONTROL CONCERNS)
- A PHYSICAL EOC ALLOWS STAFF MEMBERS TO INTERACT DIRECTLY, “FACE TO FACE”.
- IT IS EASIER TO KNOW WHERE EVERYONE IS WITH A PHYSICAL EOC. “THEY ARE ALL IN THE EOC”.



EOC Structure Recovery



PUBLIC DAMAGES (TAXING DISTRICTS)

INDIVIDUAL DAMAGES (RESIDENTS & BUSINESS)

as of 01-31-2022

PUBLIC (\$3,996,744)

• CENTRALIA CITY	\$110,051
• CHEHALIS CITY	\$477,881
• CHEHALIS-CENTRALIA RAIL ROAD	\$430,900
• LEWIS COUNTY	\$2,613,470
• LEWIS COUNTY PUD	\$132,203
• NAPA VINE CITY	\$140,000
• PORT OF CHEHALIS	\$63,600
• RIVERSIDE FIRE AUTHORITY	\$28,638

INDIVIDUAL (\$1,613,774)

• CENTRALIA CITY	
• PERSONAL PROPERTY	\$274,500
• STRUCTURE	\$386,700
• CHEHALIS CITY	
• PERSONAL PROPERTY	\$202,037
• STRUCTURE	\$227,000
• UNINCORPORATED COUNTY	
• PERSONAL PROPERTY	\$321,500
• STRUCTURE	\$202,037

NEXT STEPS...

- LEWIS COUNTY PA THRESHOLD \$336,810



- WA STATE PA THRESHOLD \$12,559,608



- INDIVIDUAL ASSISTANCE – NO \$ THRESHOLD



- COMPLETE GATHERING OF ALL ESTIMATED DAMAGES FROM COMMUNITY

- IF WA STATE MAKES THEIR THRESHOLD, THE GOVERNOR MAKES A REQUEST TO THE PRESIDENT TO OPEN FEMA FUNDING FOR PUBLIC ASSISTANCE.

- INDIVIDUAL ASSISTANCE – SBA LOW INTEREST LOAN WILL BECOME AVAILABLE AND PENDING PRESIDENTIAL DECLARATION FEMA FUNDING FOR INDIVIDUAL ASSISTANCE.