

**UPDATE**

# CBB Proposal & Funding Request

## Reach-Scale Planning, Investment Keys Road Bridge to SR107 Bridge

*Solving today's habitat, infrastructure, and farmland threats through tomorrow's opportunities.*



**Port of Grays Harbor**

*On Washington's Pacific Coast*

May 5, 2022

Satsop Business Park

**June 2, 2022**

**Veterans Museum (Chehalis)**



CONSERVATION DISTRICTS  
OF WASHINGTON STATE

**Grays Harbor  
Conservation  
District**

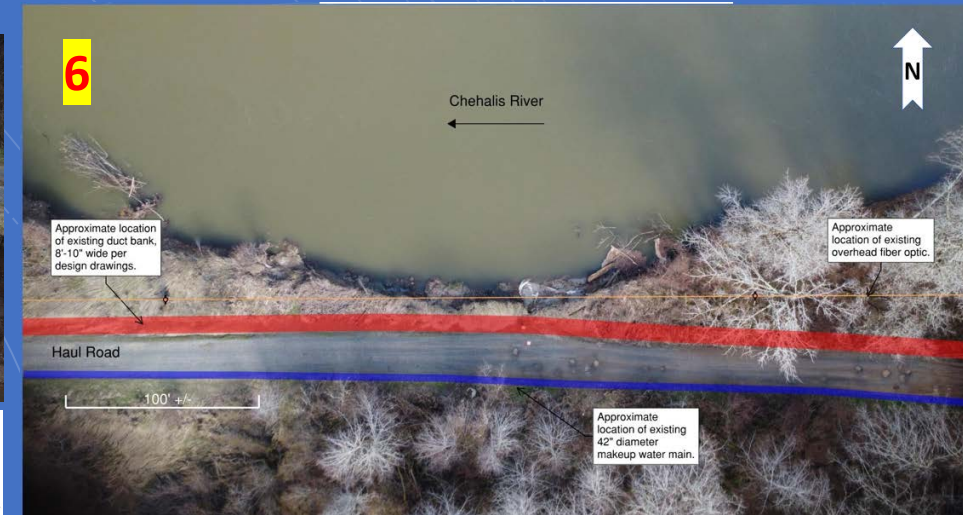
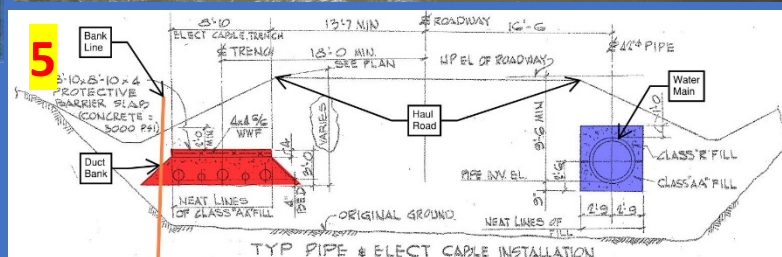
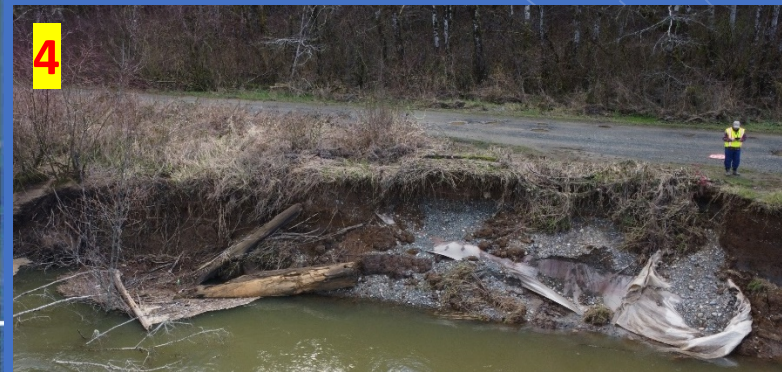
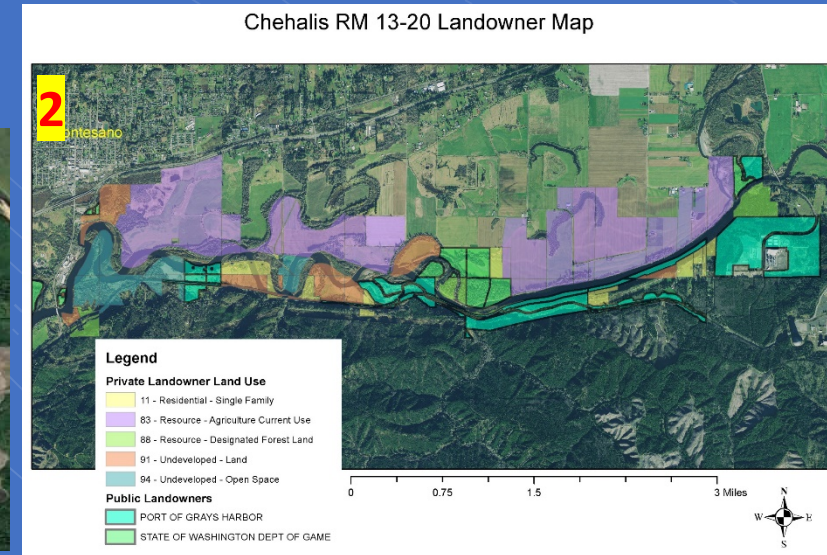
*your window to healthy lands*

## Today's Update

1. Recap May 5<sup>th</sup> Meeting (Scott)
2. PoGH Haul Road Erosion (Randy)
  - a. Latest information
  - b. Current thinking on project need, approach
  - c. Next steps
3. Reach Analysis & Investment Plan (Scott)
4. Discussion (All)



# 1. Recap May 5<sup>th</sup> Meeting





# 1. Recap May 5<sup>th</sup> Meeting (con't.)

## Reach Analysis & Investment Plan

- ✓ GHCD begin immediately (with \$60,000 from OCB)
- ✓ Build off work done through ASRP
- ✓ Involve stakeholders
- ✓ Develop a shared vision that integrates flood, fish, erosion solutions
- ✓ Leverage partnerships and funding sources
- ✓ Return to CBB 6/02/2022 to address ~\$140,000 unfunded need
- ✓ Does CBB support this proposal? **"YES"**

Cost (approx.) --> \$ 200,000
GHCD -- Funds already secured (OCB Erosion Pilot) --> \$ 60,000
GHCD -- Unfunded need (approx.) --> \$ 140,000

## Haul Road Erosion Project

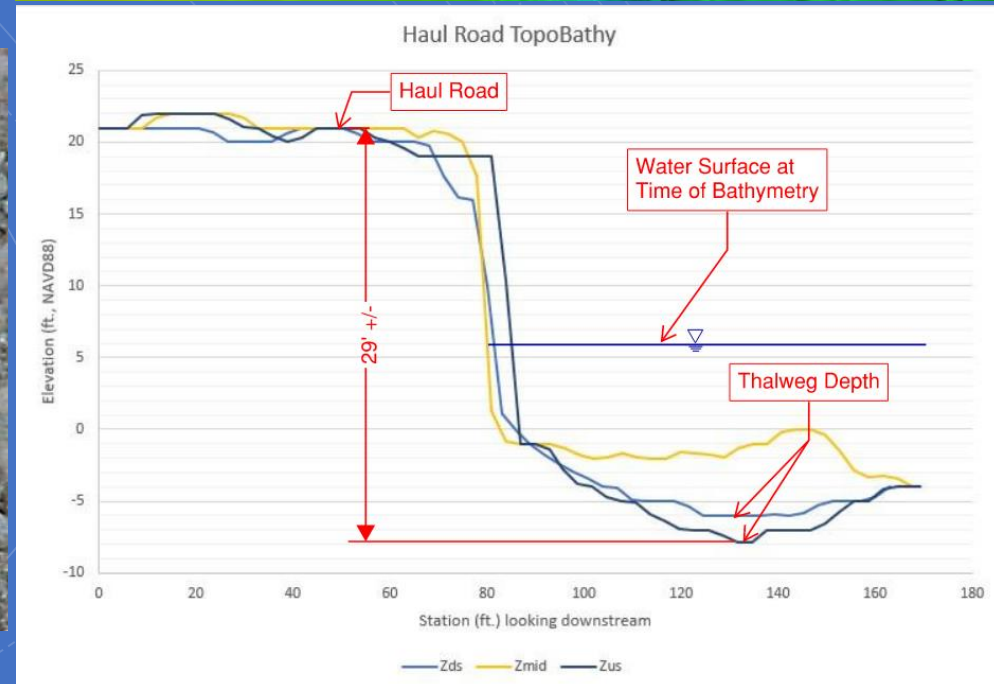
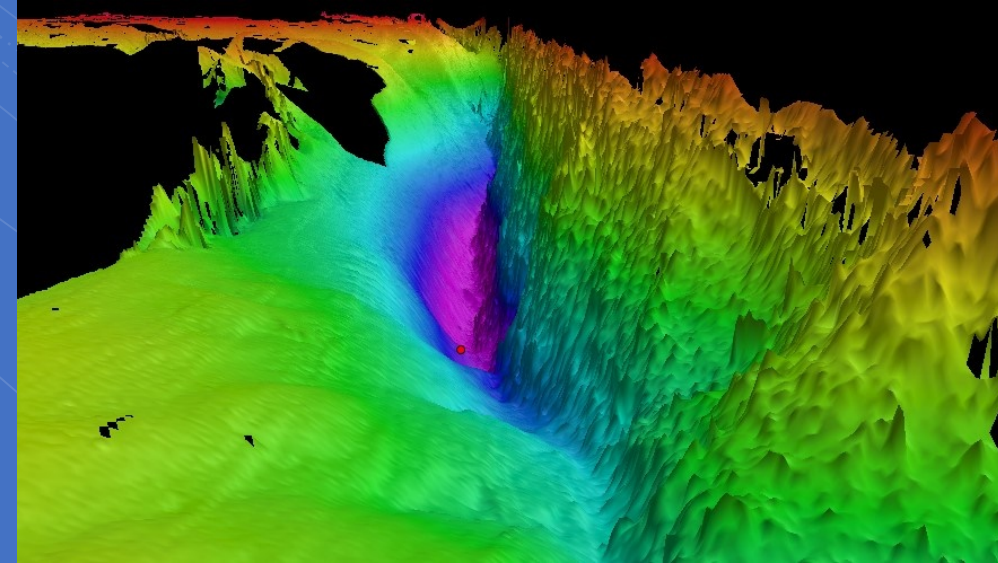
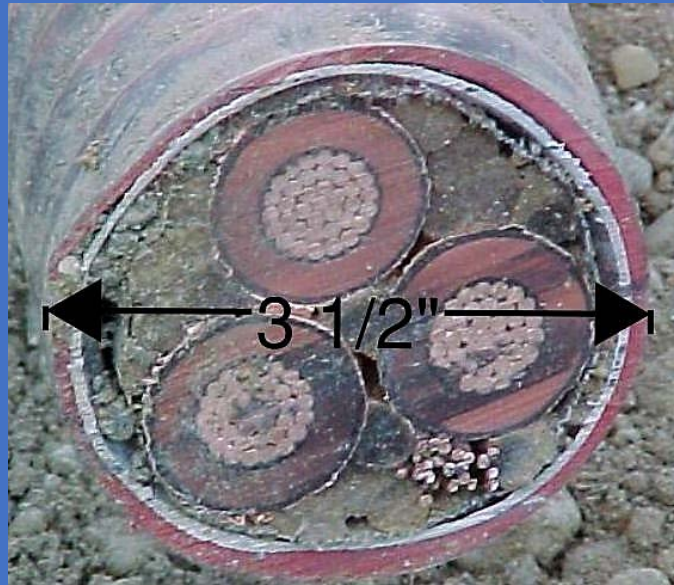
- ✓ PoGH refine proposed project
- ✓ Complete permitting
- ✓ Secure funding partners
- ✓ Return to CBB 6/02/2022 to address final construction, mitigation costs
- ✓ Does CBB support this proposal? **"YES"**

Cost --> \$ 275,000
PoGH -- Funds already secured (PoGH) --> \$ 150,000
PoGH -- Unfunded need --> \$ 125,000

## 2. PoGH Haul Road Erosion

### a. Latest information:

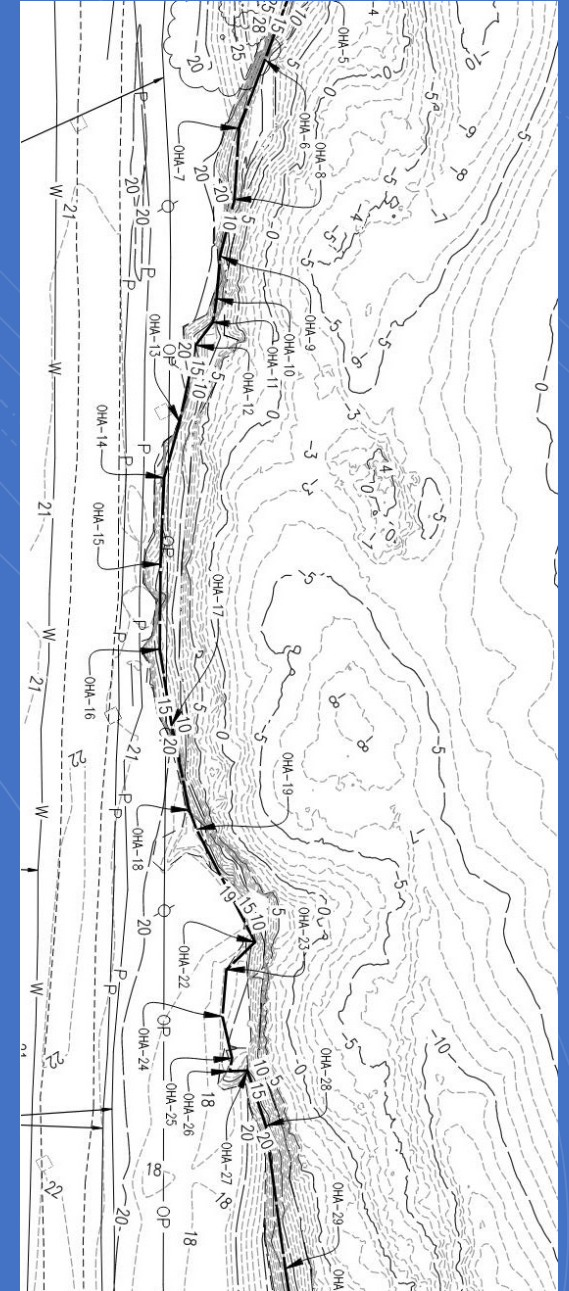
- ✓ Data collected . . .
  - Detailed bathymetry
  - Upland topographic survey
  - Ordinary High Water delineation
  - Wetlands delineation
  - Duct bank power cable type and availability
- ✓ Additional data to be collected . . .
  - Geotechnical exploration (drilling starts today)
  - GH County ROW determination in project Area



## 2. PoGH Haul Road Erosion (con't.)

### a. Latest information (cont.)

- ✓ Permitting . . .
  - US Army Corps of Engineers -- Does not meet definition of emergency, “significant permitting hurdles” for the rock concept
  - Continuing to engage with other permitting agencies
- ✓ Funding partners . . .
  - Grays Harbor Energy – Promising funding conversations
  - GH PUD -- Promising funding conversations (in-kind)
  - GH County -- Port will engage if ROW is present
  - Still developing specifics of project and funding needs





## 2. PoGH Haul Road Erosion (con't.)

### b. Current thinking on project need, approach:

- ✓ Need = **Be prepared for this flood season**
  - Relocation of primary utilities not a viable option
  - Waiting for further erosion will be too late
- ✓ Approach = **“Phased, just-in-time, multi-year” approach**
  - Exploring permittable, constructable short-term solution(s) for this flood season
  - Provide some protection for utilities and buy time to refine project
  - Implement longer-term solution(s) for immediate area in 2023 work window
  - Implement reach-scale solutions and mitigation in 2024 and beyond
- ✓ **Project is evolving (refining)** as we continue to gather and process new information
  - Detailed bathymetry and topography may open the door to softer solutions
  - Geotechnical information is still a critical need
  - More time means a more refined design, with more methods and materials available for consideration
  - There will still be a large rock component



## 2. PoGH Haul Road Erosion (con't.)

### c. Next steps:

- ✓ Finish geotechnical exploration and analysis
- ✓ Determine short-term solution(s) for this flood season
- ✓ Continue permitting discussions
- ✓ Refine project approach, longer-term project design, and costs
- ✓ Continue and refine funding partners
- ✓ Refine funding ask by July 7<sup>th</sup> Chehalis Basin Board meeting





### 3. Reach Analysis & Investment Plan

#### Update/next steps:

- ✓ Working with GHCD, OCB and RCO to model scope of work after Satsop Investment Plan approach.
  - Task 1 -- Assess and tally key issues, parties, and priority outcomes.
  - Task 2 -- Develop range of potential and priority actions (and associated implementation costs/timelines).
  - Task 3 -- Engage interested and affected parties.
  - Task 4 -- Memorialize plan of action as a reader-friendly, readily-consumable, resource for today and tomorrow.
  - Task 5 -- Engage and keep interested and affected parties informed, up-to-date, and able to access key documents and informational materials.
- ✓ Report back at July 7th Chehalis Basin Board meeting



<https://www.ezview.wa.gov/DesktopModules/Documents2/View.aspx?tabID=37263&alias=1973&mid=69455&ItemID=7087>

## 4. Discussion

*Solving today's habitat, infrastructure, and farmland threats through tomorrow's opportunities.*