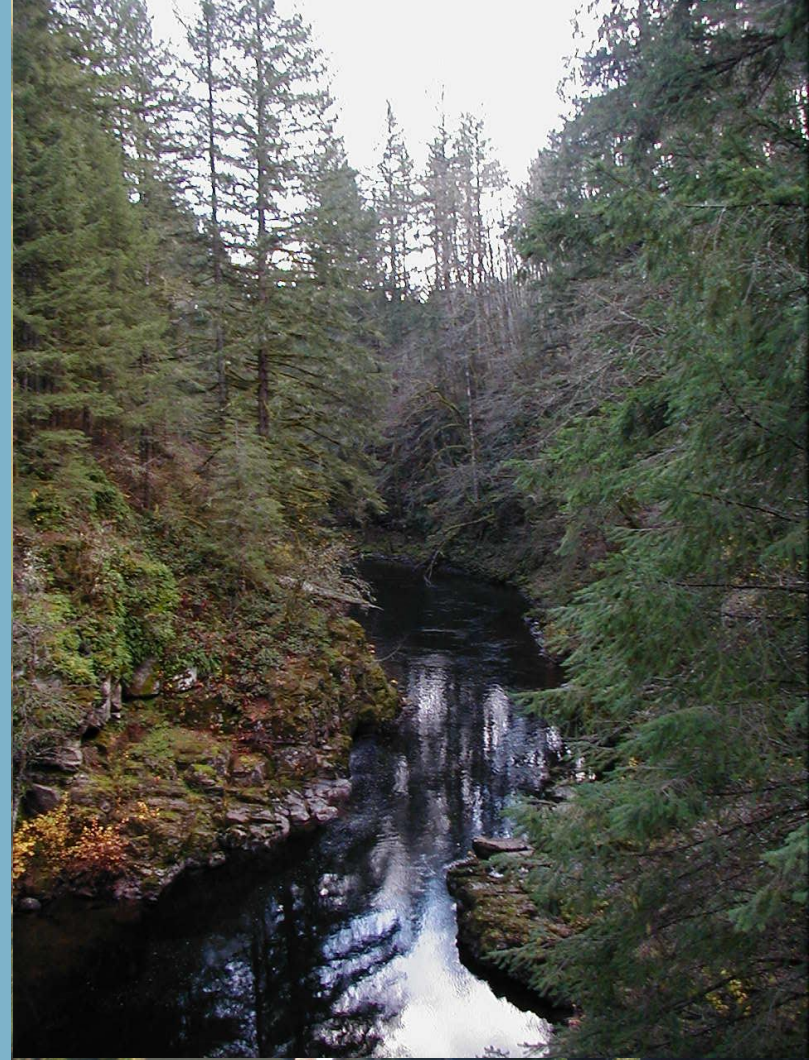


Monitoring Clark County's and Camas' Shoreline Master Program

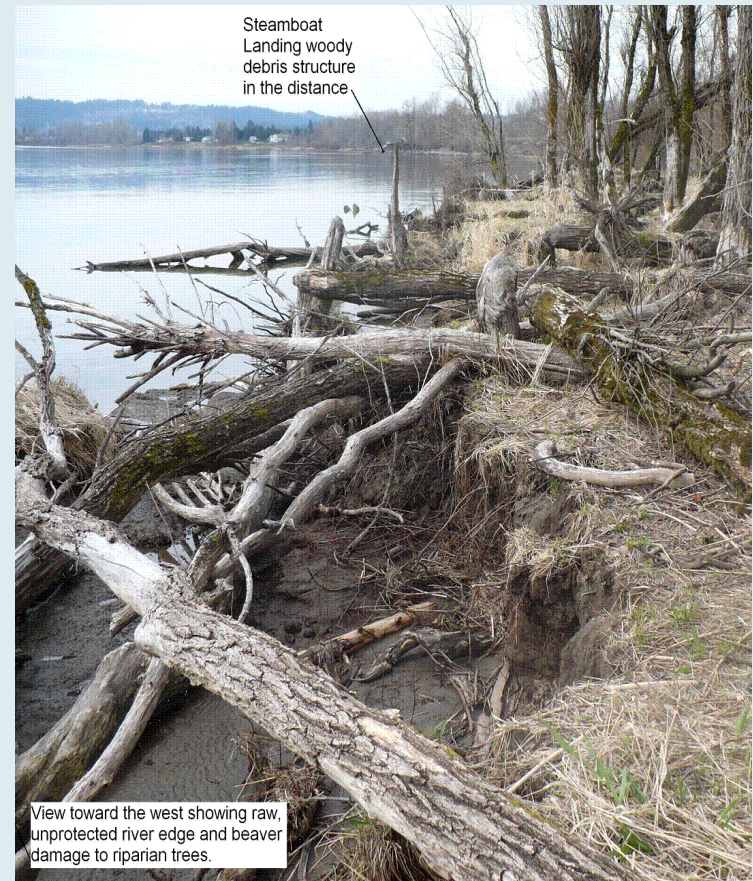
**Critical Areas Monitoring &
Adaptive Management
Workshop**



Southwest Planners Forum April 11, 2018

No Net Loss

- Post-development functions at least equal to pre-development functions
 - Regulate uses
 - Avoid development impacts
 - Mitigate unavoidable impacts
 - Consider cumulative effects of development
- Develop plans to restore ecological functions



GMA and SMA

- Shoreline management is 14th goal of GMA
- SMP regulates critical areas in shoreline jurisdiction
- Shoreline regulations must protect at least as well as critical areas regulations

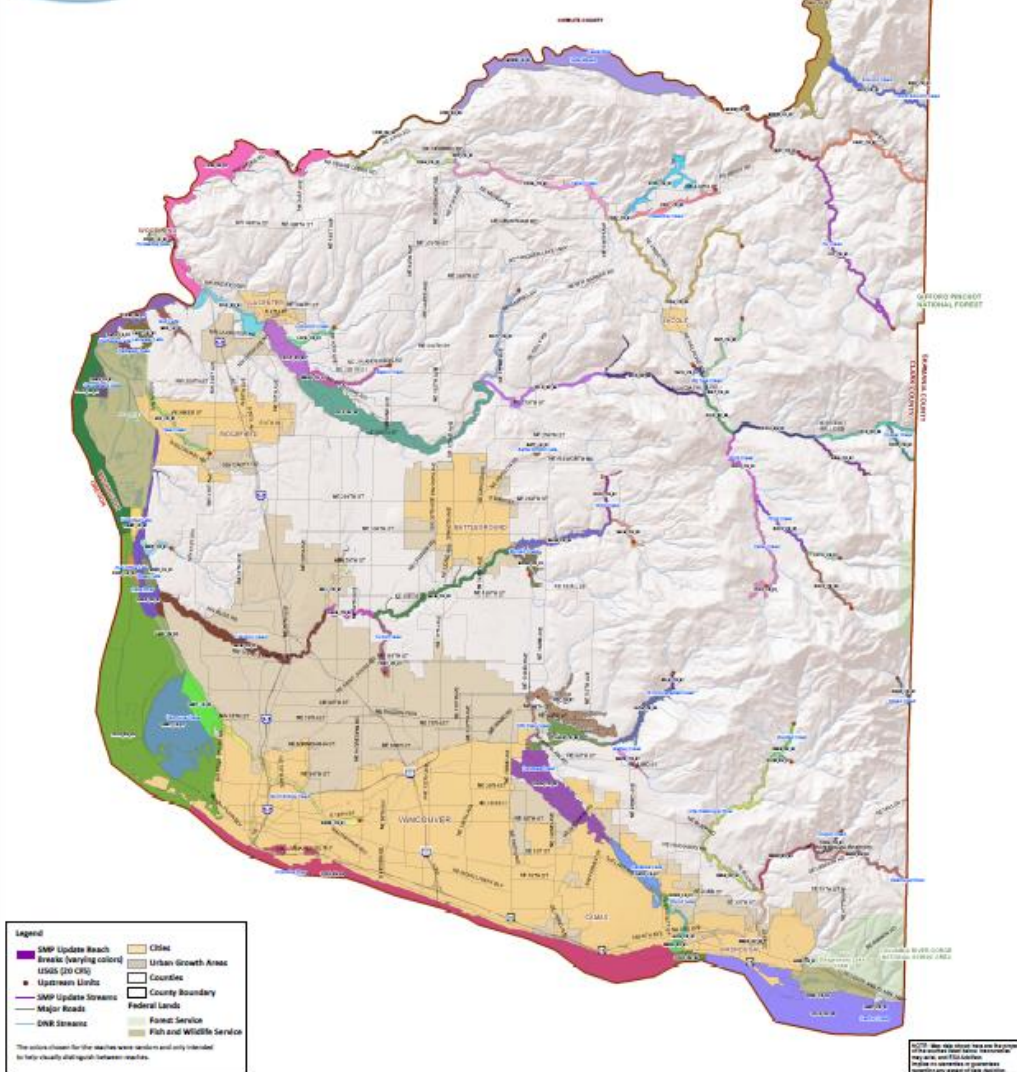


2012 SMP Update

- Ecology
 - Grant agreement with the City of Vancouver
 - Partnership with all cities in Clark County
 - Update goal is to review shorelines without jurisdictional boundaries.

SHORELINE MASTER PROGRAM UPDATE

BATTLE GROUND | CAMAS | CLATSOP COUNTY | LA CENTER
ROGERSFIELD | VANCOUVER | WASHOUKAL | YACOLT



- Aquatic
- Natural
- Urban Conservancy
- Medium Intensity
- High Intensity
- Rural Conservancy Residential
- Rural Conservancy Resource Land



SMA Grant Agreement No. 01300058

Coordinate System: State Plane NAD83 (8)
Washington South FIPS 4602
NOTES: Map data shown here are the property of the various listed entities. Users should verify the accuracy of the data shown. The map is for informational purposes only and does not constitute a warranty or guarantee. No liability is assumed by the user.



Map 25
SMP UPDATE REACH BREAKS


Data Sources: Clatsop County, 2009; FEMA, 2006;
DNR, 2003; Department of Ecology, 2006; ESRI, 2008

Critical Areas

1. Clark County adopted Critical Area Ordinances by reference into SMP.
2. Camas adopted Critical Area Ordinances within SMP (not by reference) and Restoration Plan as “Appendix D”

CLARK COUNTY COALITION SMP UPDATE

BATTLE GROUND | CAMAS | CLARK COUNTY | LA CENTER
RIDGEFIELD | VANCOUVER | WASHOUGAL | YACOLT



MONITORING AND ADAPTIVE MANAGEMENT FRAMEWORK

June 2012
City of Vancouver
Grant No. G1000058

CLARK COUNTY COALITION SMP UPDATE
BATTLE GROUND | CAMAS | CLARK COUNTY | LA CENTER
RIDGEFIELD | VANCOUVER | WASHOUGAL | YACOLT



MONITORING AND ADAPTIVE MANAGEMENT FRAMEWORK

June 2012
City of Vancouver
Grant No. G1000058

Monitoring components

- Permit data collection
- Bi-annual data consolidation & review
- Mid-SMP Cycle Consolidation & review
- Required 8-year SMP Update

Clark County Permit Tracking Matrices

Started with 12 columns:

Permit No.,
Type,
Shoreline Waterbody
Shoreline Designation,
Parcel #,
General Description,
In-over-water structure,
shoreline stabilization,
Fill,
Clearing/Grading,
Impervious Surface,
Mitigation

Clark County Coalition

Table A-1. Clark County Coalition SMP Monitoring Program - City

	Permit No.	Type (SSDP, CU, Var)	Shoreline Waterbody	Shoreline Designatn	Assessor Parcel No.	General Description (attach map)	In-Over-water (Dock/Float: Piles: no.)
A							
B							
C							
D							
E							
F							
G							
H							
I							
J							
K							
L							
..							

Permit Tracking

SHELF/TOPOLOGY										PERMANENT IMPACTS AND MITIGATION										TEMPORARY IMPACTS AND MITIGATION										CUMULATIVE IMPACTS AND MITIGATION									
Permit No.	Year (1897, 1911, 1912)	Shoreline Waterbody	Shoreline Designation	Resource	Location	General Description	Impact	Duration	Frequency	Severity	Significance	Impact	Duration	Frequency	Severity	Significance	Impact	Duration	Frequency	Severity	Significance	Impact	Duration	Frequency	Severity	Significance													
SHELF-00001	1897	Shoreline	Shoreline	Rural	Right of way to NE 1/4 Section 34, Township 35N, Range 12E, Meridian 10E.	CONSTRUCTION OF THE NEW TRANSMISSION MAIN FROM THE INTAKE IN TANKAGE TO ALONG RD TO NE 1/4 SECTION 34.	Loss of Wetland	10/10	10/10	10/10	10/10	Loss of Wetland	10/10	10/10	10/10	10/10	Loss of Wetland	10/10	10/10	10/10	10/10	Loss of Wetland	10/10	10/10	10/10	10/10													
SHELF-00002	1911	Shoreline	Shoreline	Rural	Right of way to NE 1/4 Section 34, Township 35N, Range 12E, Meridian 10E.	CONSTRUCTION OF THE NEW TRANSMISSION MAIN FROM THE INTAKE IN TANKAGE TO ALONG RD TO NE 1/4 SECTION 34.	Loss of Wetland	10/10	10/10	10/10	10/10	Loss of Wetland	10/10	10/10	10/10	10/10	Loss of Wetland	10/10	10/10	10/10	10/10	Loss of Wetland	10/10	10/10	10/10	10/10													
SHELF-00003	1912	Shoreline	Shoreline	Rural	Right of way to NE 1/4 Section 34, Township 35N, Range 12E, Meridian 10E.	CONSTRUCTION OF THE NEW TRANSMISSION MAIN FROM THE INTAKE IN TANKAGE TO ALONG RD TO NE 1/4 SECTION 34.	Loss of Wetland	10/10	10/10	10/10	10/10	Loss of Wetland	10/10	10/10	10/10	10/10	Loss of Wetland	10/10	10/10	10/10	10/10	Loss of Wetland	10/10	10/10	10/10	10/10													
SHELF-00004	1912	Shoreline	Shoreline	Rural	Right of way to NE 1/4 Section 34, Township 35N, Range 12E, Meridian 10E.	CONSTRUCTION OF THE NEW TRANSMISSION MAIN FROM THE INTAKE IN TANKAGE TO ALONG RD TO NE 1/4 SECTION 34.	Loss of Wetland	10/10	10/10	10/10	10/10	Loss of Wetland	10/10	10/10	10/10	10/10	Loss of Wetland	10/10	10/10	10/10	10/10	Loss of Wetland	10/10	10/10	10/10	10/10													
SHELF-00005	1912	Shoreline	Shoreline	Rural	Right of way to NE 1/4 Section 34, Township 35N, Range 12E, Meridian 10E.	CONSTRUCTION OF THE NEW TRANSMISSION MAIN FROM THE INTAKE IN TANKAGE TO ALONG RD TO NE 1/4 SECTION 34.	Loss of Wetland	10/10	10/10	10/10	10/10	Loss of Wetland	10/10	10/10	10/10	10/10	Loss of Wetland	10/10	10/10	10/10	10/10	Loss of Wetland	10/10	10/10	10/10	10/10													
SHELF-00006	1912	Shoreline	Shoreline	Rural	Right of way to NE 1/4 Section 34, Township 35N, Range 12E, Meridian 10E.	CONSTRUCTION OF THE NEW TRANSMISSION MAIN FROM THE INTAKE IN TANKAGE TO ALONG RD TO NE 1/4 SECTION 34.	Loss of Wetland	10/10	10/10	10/10	10/10	Loss of Wetland	10/10	10/10	10/10	10/10	Loss of Wetland	10/10	10/10	10/10	10/10	Loss of Wetland	10/10	10/10	10/10	10/10													
SHELF-00007	1912	Shoreline	Shoreline	Rural	Right of way to NE 1/4 Section 34, Township 35N, Range 12E, Meridian 10E.	CONSTRUCTION OF THE NEW TRANSMISSION MAIN FROM THE INTAKE IN TANKAGE TO ALONG RD TO NE 1/4 SECTION 34.	Loss of Wetland	10/10	10/10	10/10	10/10	Loss of Wetland	10/10	10/10	10/10	10/10	Loss of Wetland	10/10	10/10	10/10	10/10	Loss of Wetland	10/10	10/10	10/10	10/10													
SHELF-00008	1912	Shoreline	Shoreline	Rural	Right of way to NE 1/4 Section 34, Township 35N, Range 12E, Meridian 10E.	CONSTRUCTION OF THE NEW TRANSMISSION MAIN FROM THE INTAKE IN TANKAGE TO ALONG RD TO NE 1/4 SECTION 34.	Loss of Wetland	10/10	10/10	10/10	10/10	Loss of Wetland	10/10	10/10	10/10	10/10	Loss of Wetland	10/10	10/10	10/10	10/10	Loss of Wetland	10/10	10/10	10/10	10/10													
SHELF-00009	1912	Shoreline	Shoreline	Rural	Right of way to NE 1/4 Section 34, Township 35N, Range 12E, Meridian 10E.	CONSTRUCTION OF THE NEW TRANSMISSION MAIN FROM THE INTAKE IN TANKAGE TO ALONG RD TO NE 1/4 SECTION 34.	Loss of Wetland	10/10	10/10	10/10	10/10	Loss of Wetland	10/10	10/10	10/10	10/10	Loss of Wetland	10/10	10/10	10/10	10/10	Loss of Wetland	10/10	10/10	10/10	10/10													
SHELF-00010	1912	Shoreline	Shoreline	Rural	Right of way to NE 1/4 Section 34, Township 35N, Range 12E, Meridian 10E.	CONSTRUCTION OF THE NEW TRANSMISSION MAIN FROM THE INTAKE IN TANKAGE TO ALONG RD TO NE 1/4 SECTION 34.	Loss of Wetland	10/10	10/10	10/10	10/10	Loss of Wetland	10/10	10/10	10/10	10/10	Loss of Wetland	10/10	10/10	10/10	10/10	Loss of Wetland	10/10	10/10	10/10	10/10													
SHELF-00011	1912	Shoreline	Shoreline	Rural	Right of way to NE 1/4 Section 34, Township 35N, Range 12E, Meridian 10E.	CONSTRUCTION OF THE NEW TRANSMISSION MAIN FROM THE INTAKE IN TANKAGE TO ALONG RD TO NE 1/4 SECTION 34.	Loss of Wetland	10/10	10/10	10/10	10/10	Loss of Wetland	10/10	10/10	10/10	10/10	Loss of Wetland	10/10	10/10	10/10	10/10	Loss of Wetland	10/10	10/10	10/10	10/10													
SHELF-00012	1912	Shoreline	Shoreline	Rural	Right of way to NE 1/4 Section 34, Township 35N, Range 12E, Meridian 10E.	CONSTRUCTION OF THE NEW TRANSMISSION MAIN FROM THE INTAKE IN TANKAGE TO ALONG RD TO NE 1/4 SECTION 34.	Loss of Wetland	10/10	10/10	10/10	10/10	Loss of Wetland	10/10	10/10	10/10	10/10	Loss of Wetland	10/10	10/10	10/10	10/10	Loss of Wetland	10/10	10/10	10/10	10/10													
SHELF-00013	1912	Shoreline	Shoreline	Rural	Right of way to NE 1/4 Section 34, Township 35N, Range 12E, Meridian 10E.	CONSTRUCTION OF THE NEW TRANSMISSION MAIN FROM THE INTAKE IN TANKAGE TO ALONG RD TO NE 1/4 SECTION 34.	Loss of Wetland	10/10	10/10	10/10	10/10	Loss of Wetland	10/10	10/10	10/10	10/10	Loss of Wetland	10/10	10/10	10/10	10/10	Loss of Wetland	10/10	10/10	10/10	10/10													
SHELF-00014	1912	Shoreline	Shoreline	Rural	Right of way to NE 1/4 Section 34, Township 35N, Range 12E, Meridian 10E.	CONSTRUCTION OF THE NEW TRANSMISSION MAIN FROM THE INTAKE IN TANKAGE TO ALONG RD TO NE 1/4 SECTION 34.	Loss of Wetland	10/10	10/10	10/10	10/10	Loss of Wetland	10/10	10/10	10/10	10/10	Loss of Wetland	10/10	10/10	10/10	10/10	Loss of Wetland	10/10	10/10	10/10	10/10													
SHELF-00015	1912	Shoreline	Shoreline	Rural	Right of way to NE 1/4 Section 34, Township 35N, Range 12E, Meridian 10E.	CONSTRUCTION OF THE NEW TRANSMISSION MAIN FROM THE INTAKE IN TANKAGE TO ALONG RD TO NE 1/4 SECTION 34.	Loss of Wetland	10/10	10/10	10/10	10/10	Loss of Wetland	10/10	10/10	10/10	10/10	Loss of Wetland	10/10	10/10	10/10	10/10	Loss of Wetland	10/10	10/10	10/10	10/10													
SHELF-00016	1912	Shoreline	Shoreline	Rural	Right of way to NE 1/4 Section 34, Township 35N, Range 12E, Meridian 10E.	CONSTRUCTION OF THE NEW TRANSMISSION MAIN FROM THE INTAKE IN TANKAGE TO ALONG RD TO NE 1/4 SECTION 34.	Loss of Wetland	10/10	10/10	10/10	10/10	Loss of Wetland	10/10	10/10	10/10	10/10	Loss of Wetland	10/10	10/10	10/10	10/10	Loss of Wetland	10/10	10/10	10/10	10/10													
SHELF-00017	1912	Shoreline	Shoreline	Rural	Right of way to NE 1/4 Section 34, Township 35N, Range 12E, Meridian 10E.	CONSTRUCTION OF THE NEW TRANSMISSION MAIN FROM THE INTAKE IN TANKAGE TO ALONG RD TO NE 1/4 SECTION 34.	Loss of Wetland	10/10	10/10	10/10	10/10	Loss of Wetland	10/10	10/10	10/10	10/10	Loss of Wetland	10/10	10/10	10/10	10/10	Loss of Wetland	10/10	10/10	10/10	10/10													
SHELF-00018	1912	Shoreline	Shoreline	Rural	Right of way to NE 1/4 Section 34, Township 35N, Range 12E, Meridian 10E.	CONSTRUCTION OF THE NEW TRANSMISSION MAIN FROM THE INTAKE IN TANKAGE TO ALONG RD TO NE 1/4 SECTION 34.	Loss of Wetland	10/10	10/10	10/10	10/10	Loss of Wetland	10/10	10/10	10/10	10/10	Loss of Wetland	10/10	10/10	10/10	10/10	Loss of Wetland	10/10	10/10	10/10	10/10													
SHELF-00019	1912	Shoreline	Shoreline	Rural	Right of way to NE 1/4 Section 34, Township 35N, Range 12E, Meridian 10E.	CONSTRUCTION OF THE NEW TRANSMISSION MAIN FROM THE INTAKE IN TANKAGE TO ALONG RD TO NE 1/4 SECTION 34.	Loss of Wetland	10/10	10/10	10/10	10/10	Loss of Wetland	10/10	10/10	10/10	10/10	Loss of Wetland	10/10	10/10	10/10	10/10	Loss of Wetland	10/10	10/10	10/10	10/10													
SHELF-00020	1912	Shoreline	Shoreline	Rural	Right of way to NE 1/4 Section 34, Township 35N, Range 12E, Meridian 10E.	CONSTRUCTION OF THE NEW TRANSMISSION MAIN FROM THE INTAKE IN TANKAGE TO ALONG RD TO NE 1/4 SECTION 34.	Loss of Wetland	10/10	10/10	10/10	10/10	Loss of Wetland	10/10	10/10	10/10	10/10	Loss of Wetland	10/10	10/10	10/10	10/10	Loss of Wetland	10/10	10/10	10/10	10/10													
SHELF-00021	1912	Shoreline	Shoreline	Rural	Right of way to NE 1/4 Section 34, Township 35N, Range 12E, Meridian 10E.	CONSTRUCTION OF THE NEW TRANSMISSION MAIN FROM THE INTAKE IN TANKAGE TO ALONG RD TO NE 1/4 SECTION 34.	Loss of Wetland	10/10	10/10	10/10	10/10	Loss of Wetland	10/10	10/10	10/10	10/10	Loss of Wetland	10/10	10/10	10/10	10/10	Loss of Wetland	10/10	10/10	10/10	10/10													
SHELF-00022	1912	Shoreline	Shoreline	Rural	Right of way to NE 1/4 Section 34, Township 35N, Range 12E, Meridian 10E.	CONSTRUCTION OF THE NEW TRANSMISSION MAIN FROM THE INTAKE IN TANKAGE TO ALONG RD TO NE 1/4 SECTION 34.	Loss of Wetland	10/10	10/10	10/10	10/10	Loss of Wetland	10/10	10/10	10/10	10/10	Loss of Wetland	10/10	10/10	10/10	10/10	Loss of Wetland	10/10	10/10	10/10	10/10													
SHELF-00023	1912	Shoreline	Shoreline	Rural	Right of way to NE 1/4 Section 34, Township 35N, Range 12E, Meridian 10E.	CONSTRUCTION OF THE NEW TRANSMISSION MAIN FROM THE INTAKE IN TANKAGE TO ALONG RD TO NE 1/4 SECTION 34.	Loss of Wetland	10/10	10/10	10/10	10/10	Loss of Wetland	10/10	10/10	10/10	10/10	Loss of Wetland	10/10	10/10	10/10	10/10	Loss of Wetland	10/10	10/10	10/10	10/10													
SHELF-00024	1912	Shoreline	Shoreline	Rural	Right of way to NE 1/4 Section 34, Township 35N, Range 12E, Meridian 10E.	CONSTRUCTION OF THE NEW TRANSMISSION MAIN FROM THE INTAKE IN TANKAGE TO ALONG RD TO NE 1/4 SECTION 34.	Loss of Wetland	10/10	10/10	10/10	10/10	Loss of Wetland	10/10	10/10	10/10	10/10	Loss of Wetland	10/10	10/10	10/10	10/10	Loss of Wetland	10/10	10/10	10/10	10/10													
SHELF-00025	1912	Shoreline	Shoreline	Rural	Right of way to NE 1/4 Section 34, Township 35N, Range 12E, Meridian 10E.	CONSTRUCTION OF THE NEW TRANSMISSION MAIN FROM THE INTAKE IN TANKAGE TO ALONG RD TO NE 1/4 SECTION 34.	Loss of Wetland	10/10	10/10	10/10	10/10	Loss of Wetland	10/10	10/10	10/10	10/10	Loss of Wetland	10/10	10/10	10/10	10/10	Loss of Wetland	10/10	10/10	10/10	10/10													
SHELF-00026	1912	Shoreline	Shoreline	Rural	Right of way to NE 1/4 Section 34, Township 35N, Range 12E, Meridian 10E.	CONSTRUCTION OF THE NEW TRANSMISSION MAIN FROM THE INTAKE IN TANKAGE TO ALONG RD TO NE 1/4 SECTION 34.	Loss of Wetland	10/10	10/10	10/10	10/10	Loss of Wetland	10/10	10/10	10/10	10/10	Loss of Wetland	10/10	10/10	10/10	10/10	Loss of Wetland	10/10	10/10	10/10	10/10													
SHELF-00027	1912	Shoreline	Shoreline	Rural	Right of way to NE 1/4 Section 34, Township 35N, Range 12E, Meridian 10E.	CONSTRUCTION OF THE NEW TRANSMISSION MAIN FROM THE INTAKE IN TANKAGE TO ALONG RD TO NE 1/4 SECTION 34.	Loss of Wetland	10/10	10/10	10/10	10/10	Loss of Wetland	10/10	10/10	10/10	10/10	Loss of Wetland	10/10	10/10	10/10	10/10	Loss of Wetland	10/10	10/10	10/10	10/10													
SHELF-00028	1912	Shoreline	Shoreline	Rural	Right of way to NE 1/4 Section 34, Township 35N, Range 12E, Meridian 10E.	CONSTRUCTION OF THE NEW TRANSMISSION MAIN FROM THE INTAKE IN TANKAGE TO ALONG RD TO NE 1/4 SECTION 34.	Loss of Wetland	10/10	10/10	10/10	10/10	Loss of Wetland	10/10	10/10	10/10	10/10	Loss of Wetland	10/10	10/10	10/10	10/10	Loss of Wetland	10/10	10/10	10/10	10/10													
SHELF-00029	1912	Shoreline	Shoreline	Rural	Right of way to NE 1/4 Section 34, Township 35N, Range 12E, Meridian 10E.	CONSTRUCTION OF THE NEW TRANSMISSION MAIN FROM THE INTAKE IN TANKAGE TO ALONG RD TO NE 1/4 SECTION 34.	Loss of Wetland	10/10	10/10	10/10	10/10	Loss of Wetland	10/10	10/10	10/10	10/10	Loss of Wetland	10/10	10/10	10/10	10/10	Loss of Wetland	10/10	10/10	10/10	10/10													
SHELF-00030	1912	Shoreline	Shoreline	Rural	Right of way to NE 1/4 Section 34, Township 35N, Range 12E, Meridian 10E.	CONSTRUCTION OF THE NEW TRANSMISSION MAIN FROM THE INTAKE IN TANKAGE TO ALONG RD TO NE 1/4 SECTION 34.	Loss of Wetland	10/10	10/10	10/10	10/10	Loss of Wetland	10/10	10/10	10/10	10/10	Loss of Wetland	10/10	10/10	10/10	10/10	Loss of Wetland	10/10	10/10	10/10	10/10													
SHELF-00031	1912	Shoreline	Shoreline	Rural	Right of way to NE 1/4 Section 34, Township 35N, Range 12E, Meridian 10E.	CONSTRUCTION OF THE NEW TRANSMISSION MAIN FROM THE INTAKE IN TANKAGE TO ALONG RD TO NE 1/4 SECTION 34.	Loss of Wetland	10/10	10/10	10/10	10/10	Loss of Wetland	10/10	10/10	10/10	10/10	Loss of Wetland	10/10	10/10	10/10	10/10	Loss of Wetland	10/10	10/10	10/10	10/10													
SHELF-00032	1912	Shoreline	Shoreline	Rural	Right of way to NE 1/4 Section 34, Township 35N, Range 12E, Meridian 10E.	CONSTRUCTION OF THE NEW TRANSMISSION MAIN FROM THE INTAKE IN TANKAGE TO ALONG RD TO NE 1/4 SECTION 34.	Loss of Wetland	10/10	10/10	10/10	10/10	Loss of Wetland	10/10	10/10	10/10	10/10	Loss of Wetland	10/10	10/10	10/10	10/10	Loss of Wetland	10/10	10/10	10/10	10/10													
SHELF-00033	1912	Shoreline	Shoreline	Rural	Right of way to NE 1/4 Section 34, Township 35N, Range 12E, Meridian 10E.	CONSTRUCTION OF THE NEW TRANSMISSION MAIN FROM THE INTAKE IN TANKAGE TO ALONG RD TO NE 1/4 SECTION 34.	Loss of Wetland	10/10	10/10	10/10	10/10	Loss of Wetland	10/10	10/10	10/10	10/10	Loss of Wetland	10/10	10/10	10/10	10/10	Loss of Wetland	10/10	10/10	10/10	10/10													
SHELF-00034	1912	Shoreline	Shoreline	Rural	Right of way to NE 1/4 Section 34, Township 35N, Range 12E, Meridian 10E.	CONSTRUCTION OF THE NEW TRANSMISSION MAIN FROM THE INTAKE IN TANKAGE TO ALONG RD TO NE 1/4 SECTION 34.	Loss of Wetland	10/10	10/10	10/10	10/10	Loss of Wetland	10/10	10/10	10/10	10/10	Loss of Wetland	10/10	10/10	10/10	10/10	Loss of Wetland	10/10	10/10	10/10	10/10													
SHELF-00035	1912	Shoreline	Shoreline	Rural	Right of way to NE 1/4 Section 34, Township 35N, Range 12E, Meridian 10E.	CONSTRUCTION OF THE NEW TRANSMISSION MAIN FROM THE INTAKE IN TANKAGE TO ALONG RD TO NE 1/4 SECTION 34.	Loss of Wetland	10/10	10/10	10/10	10/10	Loss of Wetland	10/10	10/10	10/10	10/10	Loss of Wetland	10/10	10/10	10/10	10/10	Loss of Wetland	10/10	10/10	10/10	10/10													
SHELF-00036	1912	Shoreline	Shoreline	Rural	Right of way to NE 1/4 Section 34, Township 35N, Range 12E, Meridian 10E.	CONSTRUCTION OF THE NEW TRANSMISSION MAIN FROM THE INTAKE IN TANKAGE TO ALONG RD TO NE 1/4 SECTION 34.	Loss of Wetland	10/10	10/10	10/10	10/10	Loss of Wetland	10/10	10/10	10/10	10/10	Loss of Wetland	10/10	10/10	10/10	10/10	Loss of Wetland	10/10	10/10	10/10	10/10													
SHELF-00037	1912	Shoreline	Shoreline	Rural	Right of way to NE 1/4 Section 34, Township 35N, Range 12E, Meridian 10E.	CONSTRUCTION OF THE NEW TRANSMISSION MAIN FROM THE INTAKE IN TANKAGE TO ALONG RD TO NE 1/4 SECTION 34.	Loss of Wetland	10/10	10/10	10/10	10/10	Loss of Wetland	10/10	10/10	10/10	10/10	Loss of Wetland	10/10	10/10	10/10	10/10	Loss of Wetland	10/10	10/10	10/10	10/10													
SHELF-00038	1912	Shoreline	Shoreline	Rural	Right of way to NE 1/4 Section 34, Township 35N, Range 12E, Meridian 10E.	CONSTRUCTION OF THE NEW TRANSMISSION MAIN FROM THE INTAKE IN TANKAGE TO ALONG RD TO NE 1/4 SECTION 34.	Loss of Wetland	10/10	10/10	10/10	10/10	Loss of Wetland	10/10	10/10	10/10	10/10	Loss of Wetland	10/10	10/10	10/10	10/10	Loss of Wetland	10/10	10/10	10/10	10/10													
SHELF-00039	1912																																						

Permit Tracking

2014 Exemption Tracking											
Permit No.	Building Permit No.	Type (SSDP, CU, Var)	Shoreline Waterbody	Shoreline Designation	General Description (attach map)	In-water (Dock/Float:sq.ft; Piles: no.)	Over-water (Dock/Float:sq.ft; Piles: no.)	Shoreline Stabilztn (Bulkhead/RipRap/Soft: lin.ft)	Permanent Fill within 100 yr. flidpln sq.ft.	Permanent fill in streams below OHWM	Permanent Fill in Wetland above OHWM:sq.ft
SHL2016-00011	MSC2016-00241	SHL/EXEMPT	ROCK CREEK	Rural Conservancy Residential	87B03530	N/A	N/A	N/A	N/A	N/A	N/A

- Added Building Permit #
- Separated in-water and over-water structures
- Expanded Fill

Permit Tracking

Permanent habitat impact above OHWM	Permanent habitat impact below OHWM	Clearing below OHWM in sq.ft.	Grading sq ft	ImpervSurface (sq.ft.)
N/A	N/A	N/A	N/A	N/A

- Expanded to include habitat

Permit Tracking

Mitigation On-site: sq./lin.ft.	Mitigation Off-site parcel number	Mitigation Off-site sq. ft.
N/A	N/A	N/A

- Expanded Mitigation to include on-site and off-site

Bi-annual and Mid-SMP Cycle Countywide Characterization

Clark County Coalition SMP Update – Shoreline Monitoring & Adaptive Management Framework
Grant No. G100058

Reach	Watershed Characterization (Ecology)	Integrated Watershed Assessment (IWA)	EDT Model Tier	CMZ, Hazards, Critical Aquifers	Associated Wetlands	Water Quality Assessment	Priority Habitat and Species Data	Riparian Habitat Quality	Modifications	Existing Uses in Shoreline Planning Areas	Land Cover	Ecological functions
Waterbody: Lower Columbia River												
COLU_RV_01 (1,678 ac)	Priority Protection and Restoration Management Zone – Important area for discharge, storage and nitrogen removal processes. Processes are relatively intact and restoration has a high level of success. Mid-SMP update cycle review:	n/a	Tier 4 Lake River and tidal section of E Fork Lewis River Mid-SMP update cycle review:	Area flooded in 1996 Flood. Flood hazard, no critical aquifer	399 acres; (75% High Quality) Mid-SMP update cycle review:	Impaired temperature, dissolved oxygen, fecal coliform Impaired by Invasive Exotic Species Mid-SMP update cycle review:	m.r – all anadromous salmonid species; eulachon, white sturgeon, green sturgeon, mountain whitefish and coastal cutthroat trout. Waterfowl concentrations: great blue heron. Multiple nest sites – bald eagle and osprey Mid-SMP update cycle review:	Forested zone varies from non-existent to 200 feet or wider. Ranges from degraded to moderate quality. High quality riparian on northern half of Bachelor Island Mid-SMP update cycle review:	1 mapped dock/pier Dredging Mid-SMP update cycle review:	SF – Residential; 100%	0% Developed 4% Agricultural pastures 11% Beach shore and sand 37% Marsh or swamp 48% Floodplain and riparian Mid-SMP update cycle review:	Hydrologic: High Riparian: Moderate Hyporheic: Moderate Habitat: High Tidal influence, major migratory route for salmonids, high quality wetlands, multiple PHS, and next to Ridgefield National

- 13 columns
- **Includes:** Reach, Watershed, Characterization, EDT Model Tier, CMZ Hazards, CARA, Habitat Quality, Existing Uses, Ecological Functions

Shoreline Functions Assessment

Clark County Coalition SMP Update – Shoreline Monitoring & Adaptive Management Framework
Grant No. G100058

WRIA 28 Draft Current and Future Performance of Shoreline Ecological Functions

The following table describes the existing performance of shoreline ecological functions along Clark County shorelines as described in the Shoreline Inventory and Characterization Report (ESA Adolfson, 2010). Regulations from the Clark County Coalition Draft SMP (June 2011) that protect ecological functions are identified along with programmatic opportunities from the Draft Restoration Plan (ESA Adolfson, 2011). The future performance is then assessed based on the type and amount of expected development (foreseeable development) in the shoreline, the level of protection the proposed SMP regulations provide, and restoration opportunities. Specific opportunities for restoration are outlined in the Restoration Plan. Current performance of shoreline ecological functions are ranked “low”, “moderate”, and “high” depending on the level of alteration along the shoreline. Future performance is ranked “No Loss” and “Potential for Loss” depending on the expected changes from existing conditions over the next twenty years. **TO BE UPDATED**

Waterbodies and Shoreline Designations	2010 Conditions <i>Shoreline Inventory and Characterization Report - ESA Adolfson, June 2010</i>	2010 Performance <i>Shoreline Inventory and Characterization Report - ESA Adolfson, June 2010</i>	Foreseeable Development	Development and Restoration Activities - 2014	Development and Restoration Activities - 2016	Development and Restoration Activities - 2018	Performance Category per Framework (no change, area of concern, area of impairment, area of improvement)
Columbia River							
Natural Natural	<p>Reach 1: Tier 4, tidal influence; flood hazard; wetlands; water quality impaired for temperature, dissolved oxygen, fecal coliform and invasive exotic species; waterfowl concentrations, great blue heron, multiple nest sites for bald eagle and osprey; forested riparian zone varies from non-existent to 200 feet or wider, high quality riparian on northern half of Bachelor Island; dredging.</p> <p>Reach 3: Tier 1; tidal; wetlands; impaired water quality for temperature and dissolved oxygen and dioxin; forested riparian zone with some cleared areas; Marine Park.</p> <p>Reach 5: Wetlands; flood hazards; impaired water quality for temperature and dioxin; waterfowl concentrations, purple martin and wood duck nesting sites; developed areas with impervious surfaces; conversion to industrial lands.</p> <p><u>Mid-SMP update cycle review:</u></p> <p>[THIS IS WHERE THE CHANGES DOCUMENTED IN THE ICR TABLE WOULD BE TRANSFERRED OVER]</p>	<p>Reach 1: High hydrology and habitat; moderate riparian and hyporheic</p> <p>Reach 3: High hydrology; moderate riparian, hyporheic and habitat.</p> <p>Reach 5: High hydrology and habitat; Moderate hyporheic; Low riparian.</p> <p><u>Mid-SMP update cycle review:</u></p> <p>[THIS IS WHERE THE CHANGES DOCUMENTED IN THE ICR TABLE WOULD BE TRANSFERRED OVER]</p>	<p>Vacant Residential: 184 ac (17%) 3 potential residential units</p> <p>Under Public ownership: 624ac (59%)</p> <p>Exempt lands: 238ac (22%)</p>	<p>Number and type of shoreline permits;</p> <p>Number and type of enforcement actions;</p> <p>Number and type of restoration activities;</p> <p>Amount of property under enforcement action or permit activity (in acres and number of parcels);</p>	<p>Number and type of shoreline permits;</p> <p>Number and type of enforcement actions;</p> <p>Number and type of restoration activities;</p> <p>Amount of property under enforcement action or permit activity (in acres and number of parcels);</p>	<p>Number and type of shoreline permits;</p> <p>Number and type of enforcement actions;</p> <p>Number and type of restoration activities;</p> <p>Amount of property under enforcement action or permit activity (in acres and number of parcels);</p>	<p>Mid-SMP Update Cycle Review:</p> <p>2020 Required 8-Year SMP Update;</p>

- 8 columns
- Summary of 2010 Condition
- Last three columns summarize development that occurred in each reach every two years

The background image shows a stream flowing over a concrete dam. The dam has a series of diagonal buttresses. The water is white with foam as it falls over the dam. The surrounding area is heavily overgrown with dense brush, including many bare, thin branches in the foreground and thick green ivy on the dam's base. In the top left corner, there is a green rectangular overlay containing the title text.

Camas Permit Tracking

Exemptions Issued:

2012 = 10

2013 = 20

2014 = 10

2015 = 15

2016 = 13

2017 = 12

Information Included:

- Location
- Date of initial mitigation planted

Camas Permit Tracking

Substantial Development Permits Issued:

2012 = 2

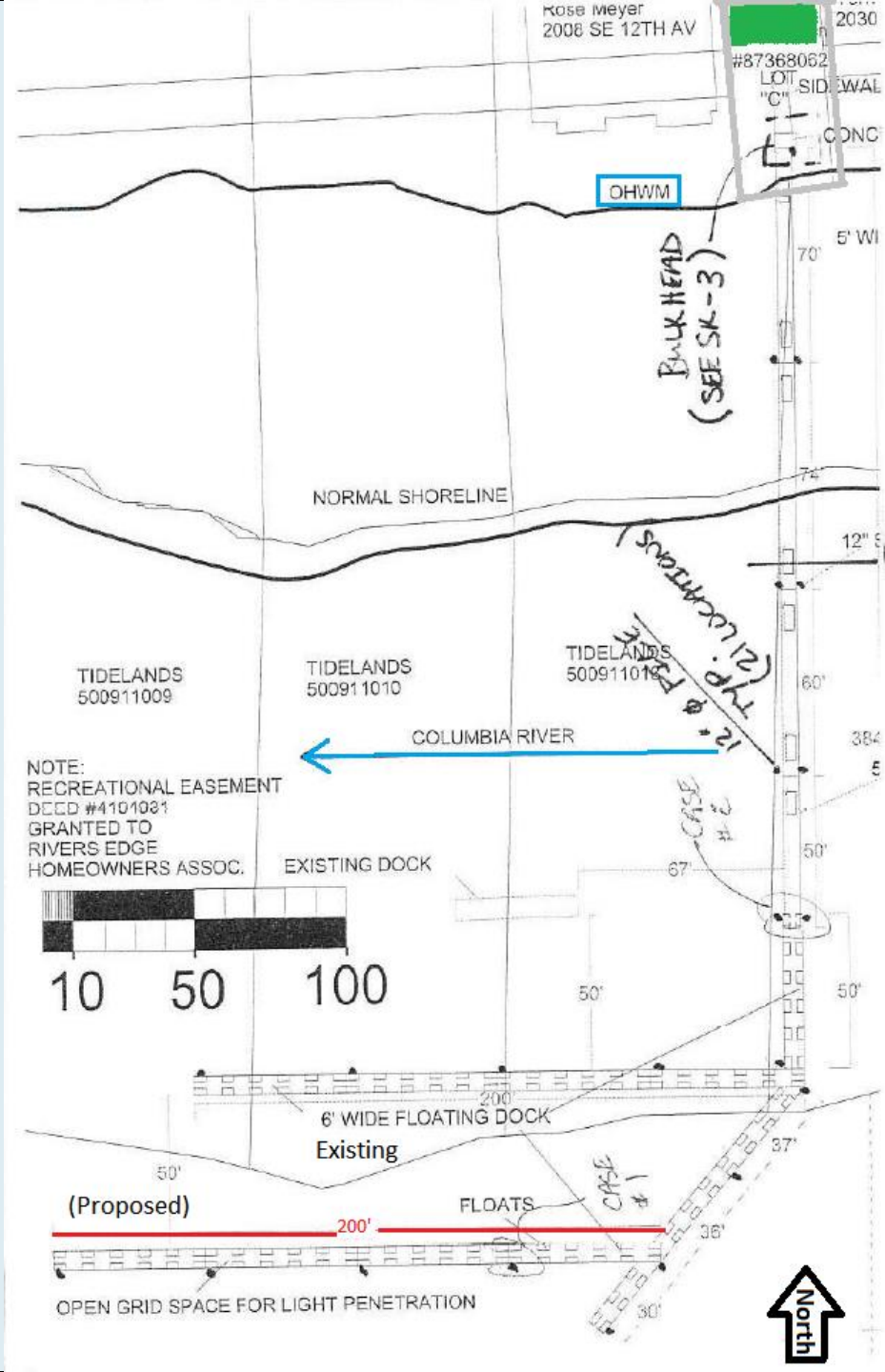
2013 = 2

2014 = 6

2015 = 5

2016 = 4

2017 = 4

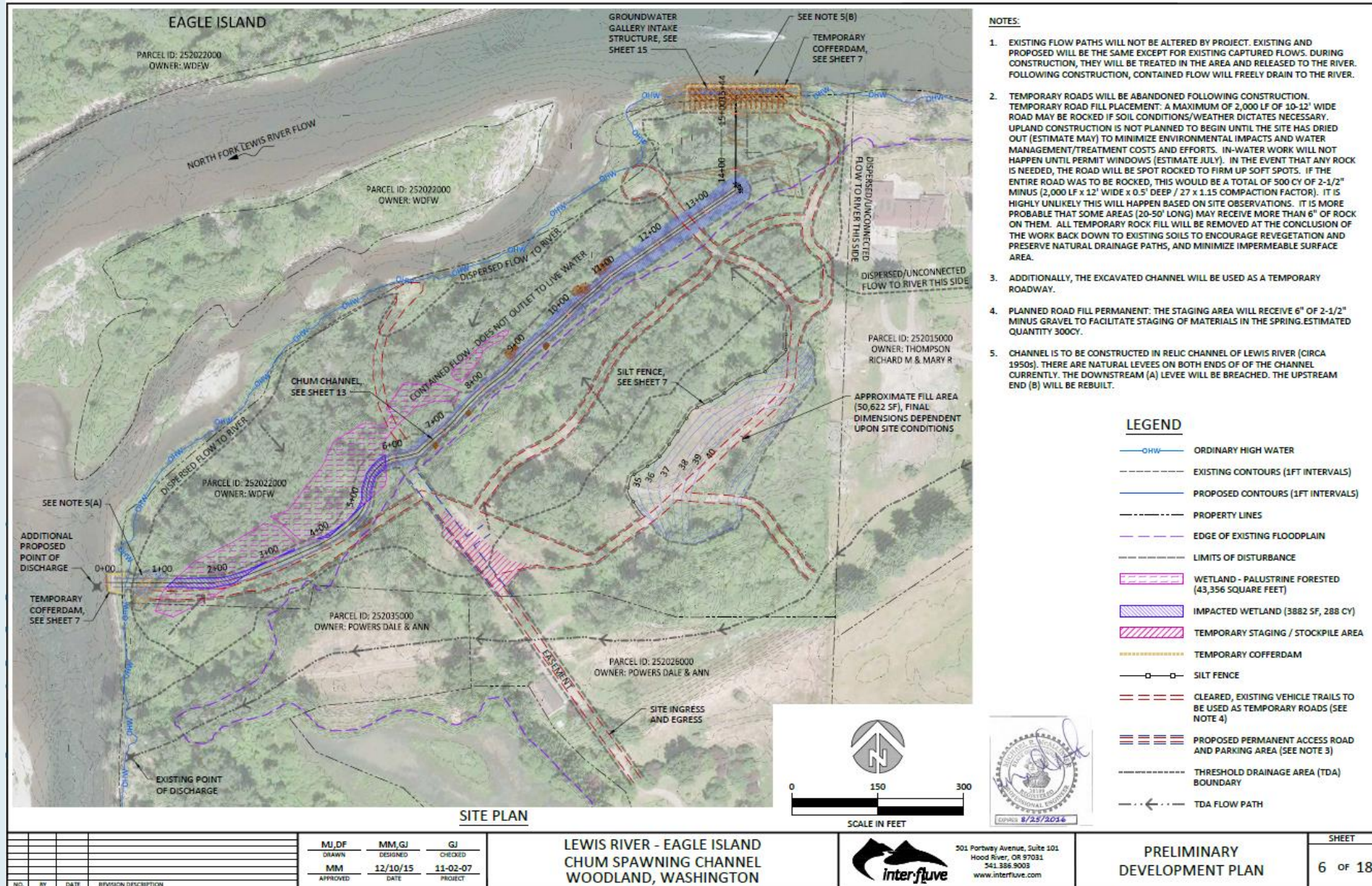


Challenges with Monitoring



- Current Staffing
- Monitoring not a focus during SMP adoption
- No standard process in place

Challenges with Monitoring



Violations

- Code enforcement tracking
- Work with property owners to correct violation
- No net loss



Lessons learned

- Need for review of as-built development
- Monitoring and Adaptive Management Framework is aspirational
- Potential for interns or entry-level staff to assist with review of aerial photos to determine NNL

Thank you!

**Gary Albrecht, AICP, Clark
County**

Community Planning

(360) 397-2280 x4318

gary.albrecht@clark.wa.gov

Sarah Fox, AICP, City of Camas

(360) 817-7269

sfox@cityofcamas.us

