



Department of Commerce



DEPARTMENT OF
ECOLOGY
State of Washington



Washington
Department of
**FISH and
WILDLIFE**

Critical Areas Monitoring and Adaptive Management

*Heather Ballash, Senior Planner
Growth Management Services
Department of Commerce*

*Jeremy Sikes
Wetlands and Shorelines Specialist
Shorelands & Environmental Assistance Program
Washington Department of Ecology*

*Keith Folkerts
Priority Habitat and Species Land Use Policy Lead
Habitat Program
Washington Department of Fish and Wildlife*



April 25, 2018

Eastern Washington Workshop

Workshop Goals



- Discuss an approach to critical areas permit monitoring and adaptive management
- Explore why monitoring might be beneficial
- Share tools for monitoring critical areas permit implementation and effectiveness
- Discuss challenges and identify resources

Why Monitor? Legal basis?



- No statutory requirement to monitor under GMA or SMA.
- Best Available Science WAC 365-195:
 - Encourages monitoring and evaluation of critical areas protection efforts (905(6))
 - In absence of valid scientific information, recommends a “precautionary or no risk” approach, or an interim adaptive management approach (920)
- Monitoring has been required in some hearings board cases under certain circumstances:
 - Jefferson County - less stringent protection standards against seawater intrusion into potable water supplies(2002)
 - Skagit County - less-than-precautionary approach (2003)
 - San Juan County - limitations on modeling and data regarding increased UGA density impacts to seawater intrusion (2006)

**Permit
Implementation
Monitoring**

**Permit
Effectiveness
Monitoring**

**Ecological
Validation
Monitoring**

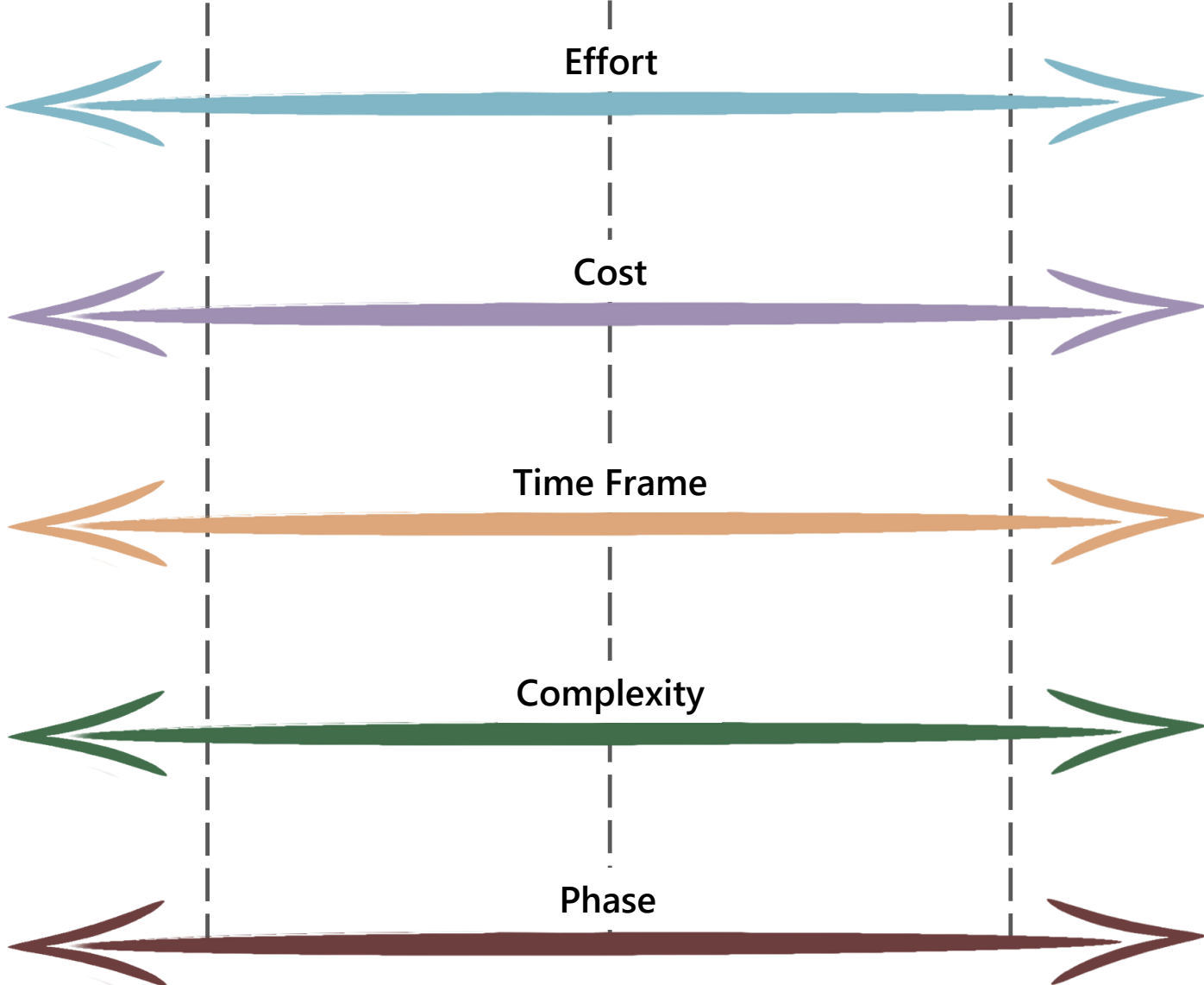
Effort

Cost

Time Frame

Complexity

Phase

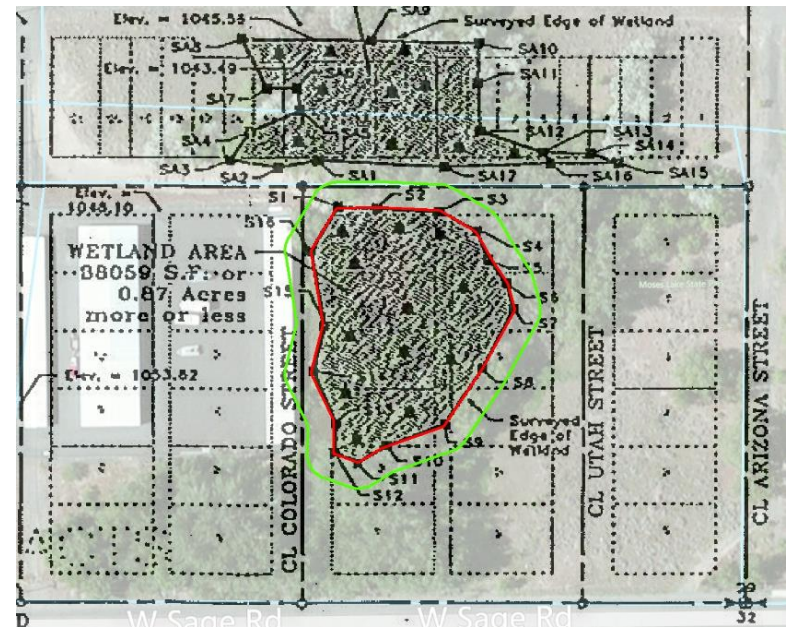


Primary emphasis of this guidance

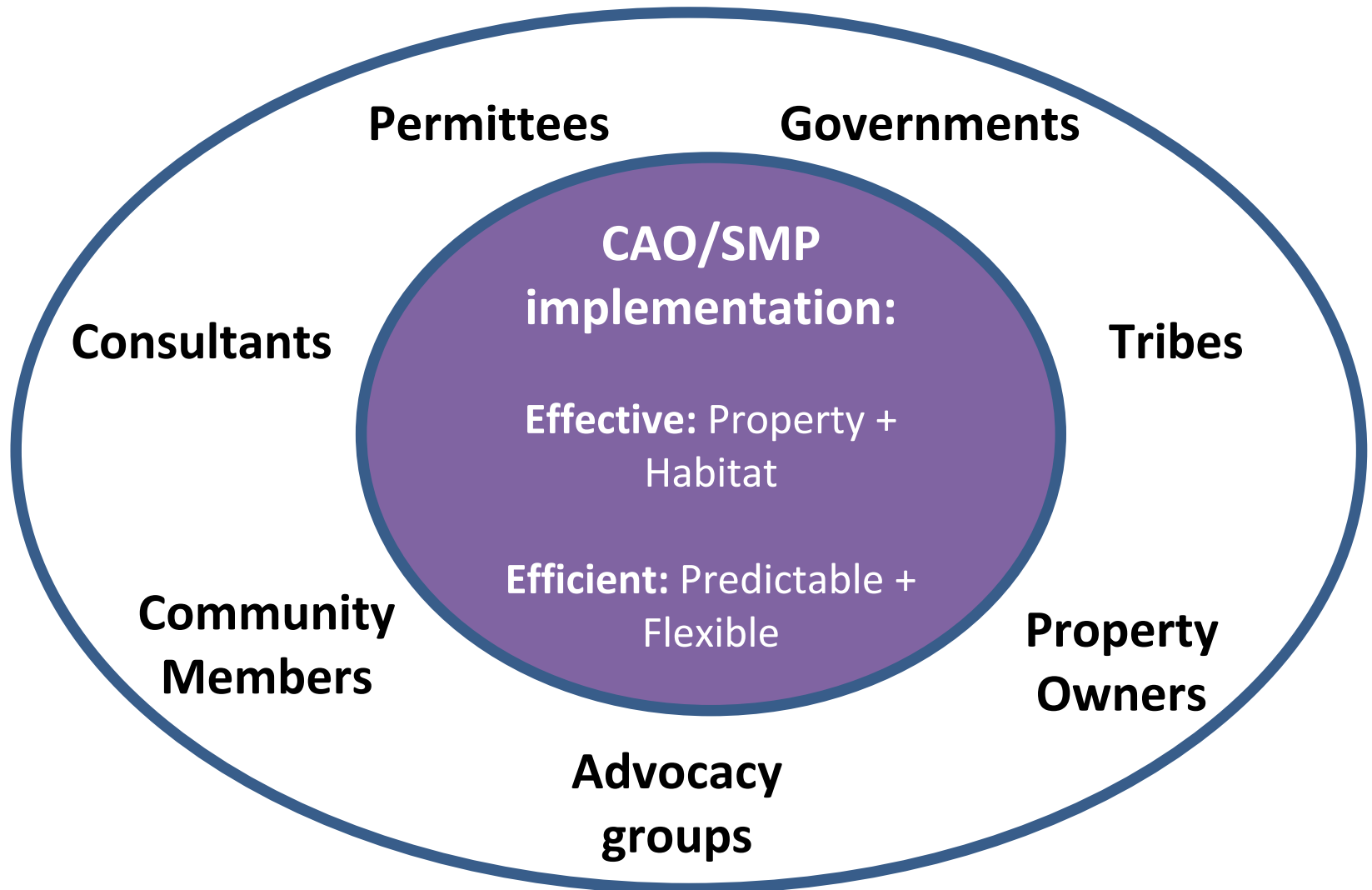
Monitoring or tracking permit implementation and/or applicant compliance with mitigation requirements.

Adaptively managing based on results, e.g.:

- Staff review process, training
- Application forms, guidance for applicants
- Administration interpretations
- Revising regulations



Why Monitor? Addressing Common Interests



Are we achieving “no net loss?”

We can only know if we are achieving No Net Loss through implementation over time

Guiding principles as we build “feedback loops:”

- Humility
- Curiosity
- Respect
- Partnerships



Prepared for

City of Benton City
City Hall
708 9th Street
Benton City, Washington 99320



SMPs: Cumulative impact analysis projected forward and determined regulations would achieve “No Net Loss.”

Benefits of monitoring: Feedback from Workshops

Provides certainty

- Ensures regulations are being implemented
- Mitigates legal liability
- Helps identify risk of development to people and environment
- Data is better than anecdote

Educates

- Validates efforts
- Provides area-wide trends
- Demonstrates no net loss/progress to officials
- Educates applicants – fosters support



Benefits of monitoring: Feedback from Workshops



Improves process

- Updates critical areas inventory and status
- Creates consistency over time
- Tracks performance standards and mitigation
- Can lead to code clarification/improving process (what to require, what not to require)
- Informs inter-relatedness of regulations
- Identifies cross-team improvements

Challenges of monitoring: Feedback from Workshops

Limited resources

- Staff, funds, limited grants
- Homeowners lack funds to pay for monitoring

Political issues

- Changes in leadership
- Lack of political will
- Lack of training/knowledge
- Changing state mandates
- Balancing diverse interests (e.g., jobs v. environment)



Challenges of monitoring: Feedback from Workshops



Data/Technology

- Baseline data lacking
- Database challenges – sorting, monitoring, transferring information
- Delay in acquiring data

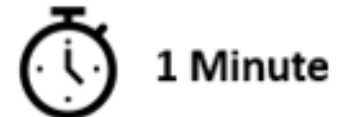
Other issues

- Loss of institutional knowledge
- Property owners' privacy concerns
- Discrepancy between jurisdictions

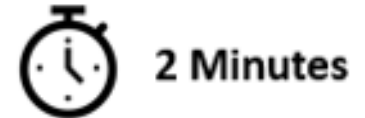
Break Out Activity

What questions would you like to answer by monitoring and adaptively managing your critical areas regulations?

Silently write down responses



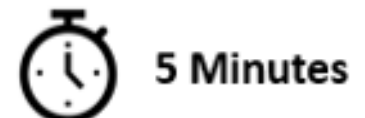
In pairs, discuss responses



In groups of 4, discuss responses



Report out any major themes to the group



Monitoring and Adaptive Management Steps



1. Articulate reasons for Monitoring
2. Identify Key Study Questions/Objectives
3. Design Monitoring Program
4. Determine Monitoring Time Frame
5. Evaluate Results and Make Recommendations

Step 1: Articulate Reasons for Monitoring

- Direction from core plans or policy documents, ordinances
- Inadequate protection of specific critical
- Unpermitted activities
- Community complaints
- Desire to improve transparency and accountability
- Improve the permit process



Courtesy of City of Bellingham

Step 2: Identify Study Questions/Objectives

Key Questions

- **How do we ensure that these conditions are implemented?**
 - Implementation monitoring
- **How do we know if performance standards are met over time?**
 - Effectiveness monitoring
- **Without one you don't have the other**

Courtesy of Island County

Step 3: Designing A Program

- Discrete categories of actions?
- Reliable way to track permits and conditions?
- Sample size and random selection?
- Selection bias/access to permit information?

City of Bellingham
Department of Public Works Laboratory
April 2015

URBAN STREAMS MONITORING PROGRAM REPORT 2014



Step 4: Monitoring Time Frame



Every 5 years?

Every 8 years
for update?

Retroactive
review?

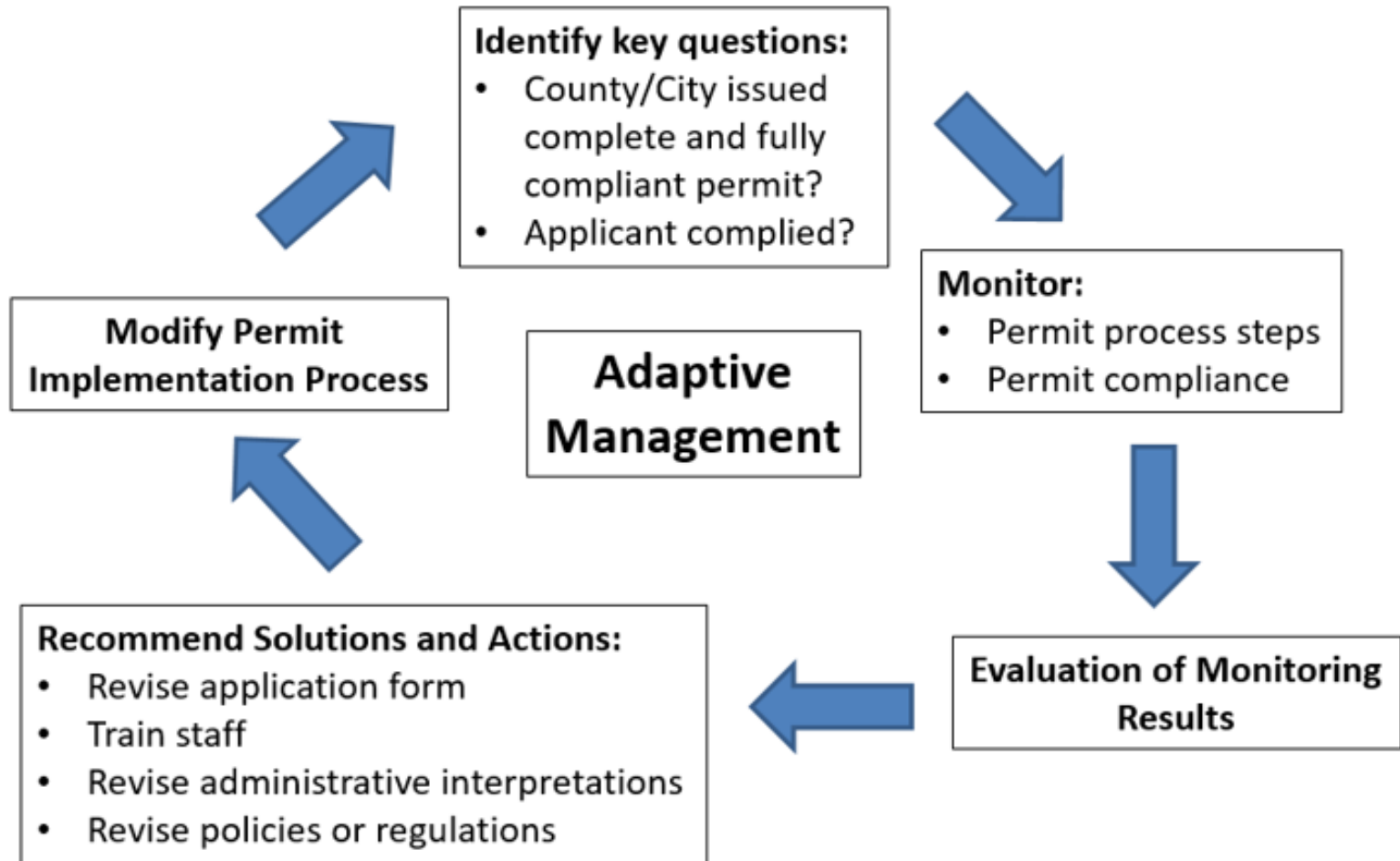
- Scope of monitoring?
- Ongoing or limited time frame?
- Specific reporting periods?

Step 5: Evaluation and Recommendations

- Evaluate results
- Produce reports that answer the monitoring questions
- Make recommendations for training staff, tweaking/improving the permit process, revising regulations



Permit Monitoring and Adaptive Management





Department of Commerce



DEPARTMENT OF
ECOLOGY
State of Washington



Washington
Department of
**FISH and
WILDLIFE**

Questions?

[Draft Monitoring and
Adaptive Management
Chapter](#)

Heather Ballash

Senior Planner

(360) 725-3044

heather.ballash@commerce.wa.gov

Jeremy Sikes

Wetlands and Shorelines Specialist

(509) 329-3426

jsik461@ecy.wa.gov

Keith Folkerts

Land Use Policy Lead

(360) 902-2390

Keith.Folkerts@wdfw.wa.gov

facebook

twitter