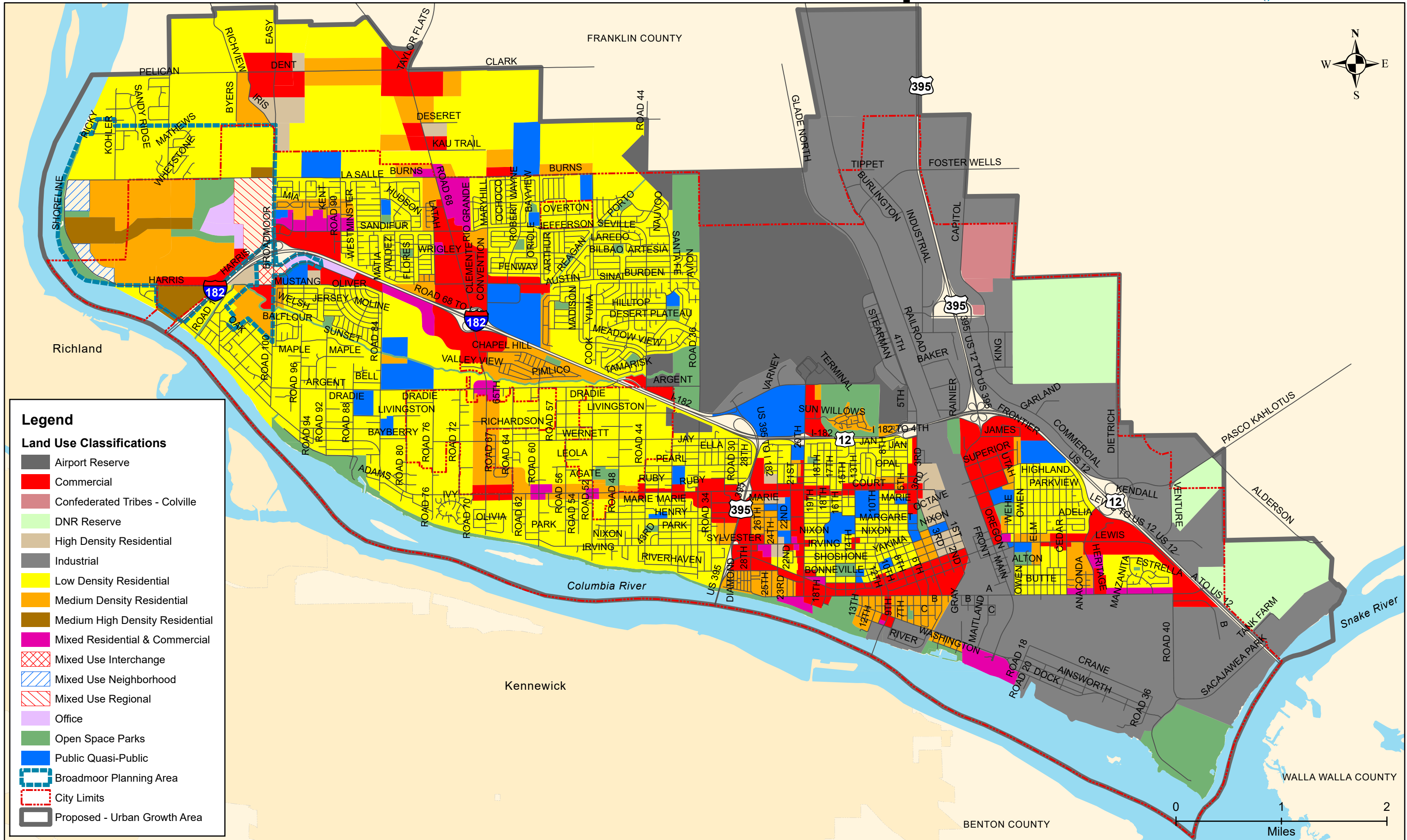


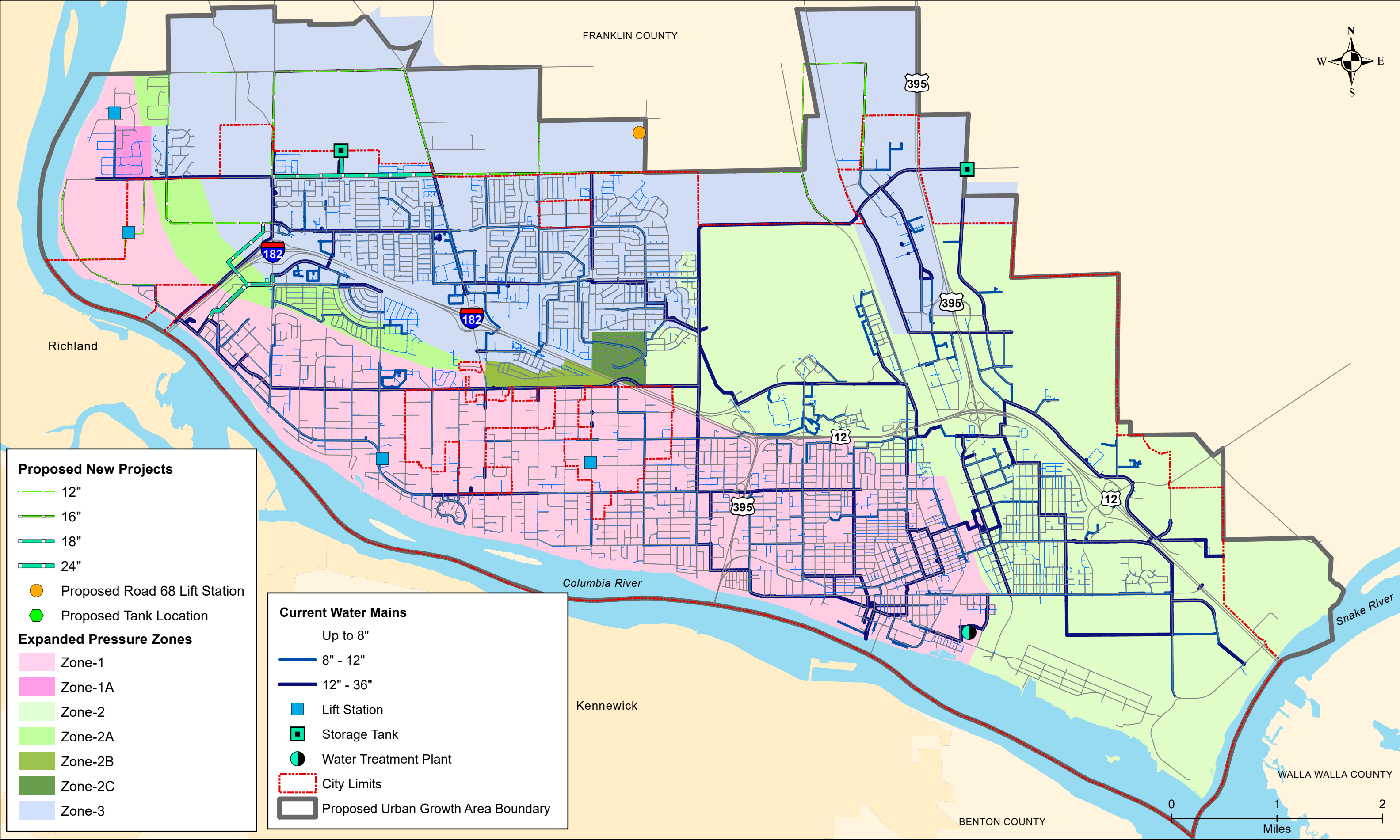
Appendix A: MAP FOLIO

Comprehensive Plan Update

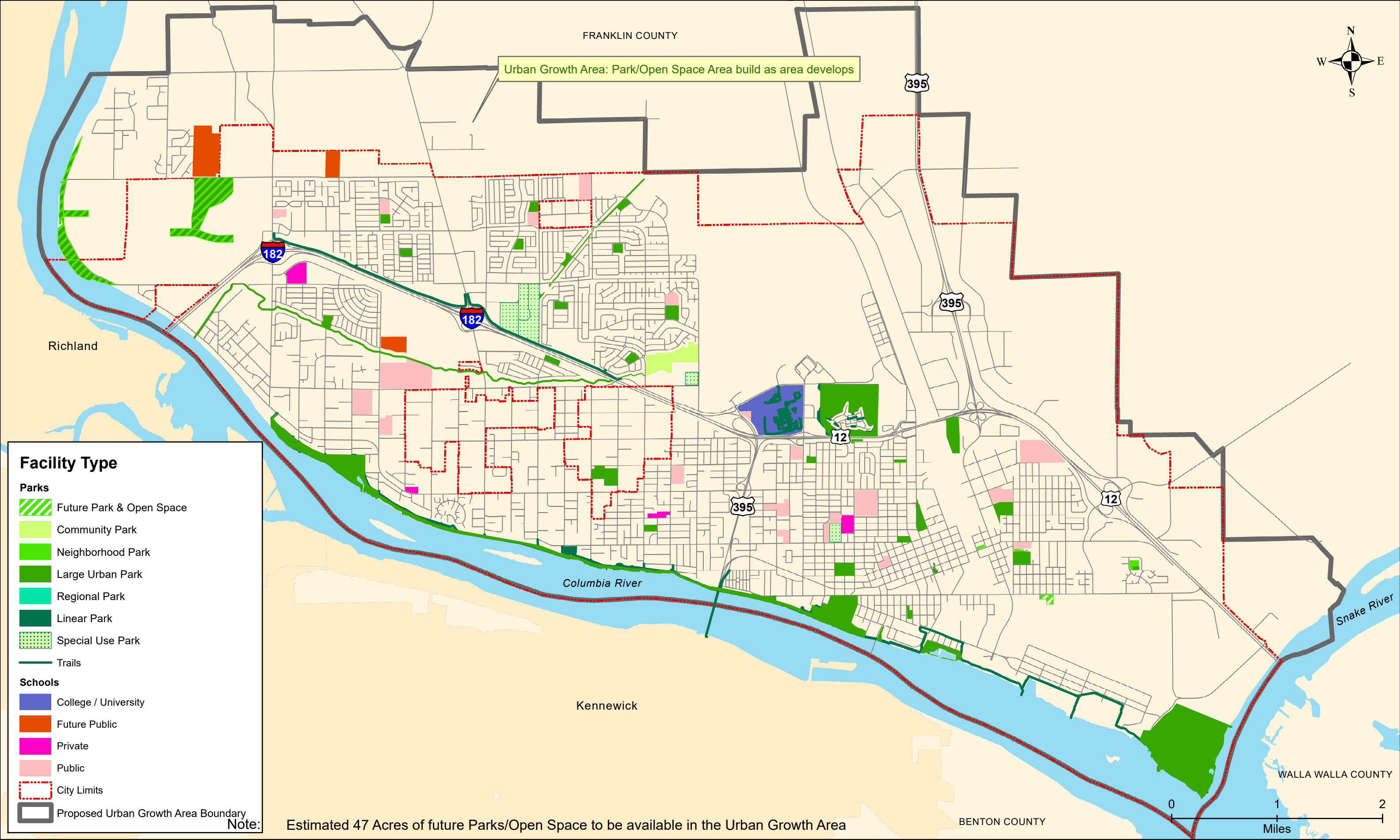
List of Maps:

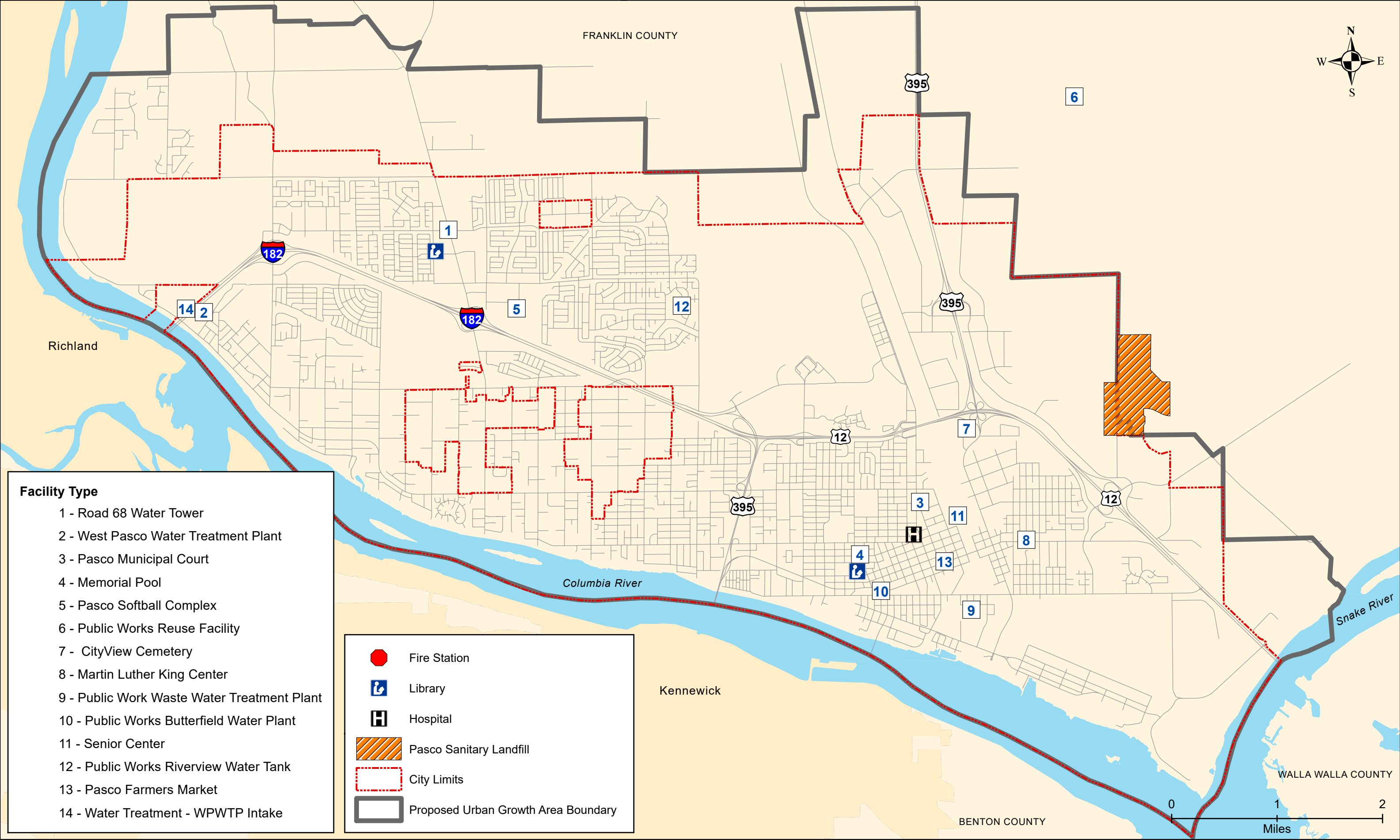
- LU-1: Future Land Use Map
- CF-1: Water Infrastructure
- CF-2: Sanitary & Sewer Infrastructure
- CF-3: Parks, Schools & Open Space
- CF-4: Municipal Facilities
- CF-5: Airport & Port Facilities
- T-1: Existing Street Functional Classification System
- T-2: Existing Intersection Control
- T-3: Existing Number of Lanes
- T-4: Existing All Day Traffic Counts
- T-5: Existing PM Peak Hour Traffic Volumes
- T-6: Existing Volume to Capacity Ratio
- T-7: Existing Intersection Control Evaluation
- T-8: Future 2038 Street Functional Classification System
- T-9: Future 2038 PM Peak Hour Traffic Volumes
- T-10: Future 2038 Volume to Capacity Ratio
- T-11: Future 2038 Intersection Control Evaluation
- T-12: Transportation Improvements
- CA-1: Critical Areas & Resource Lands

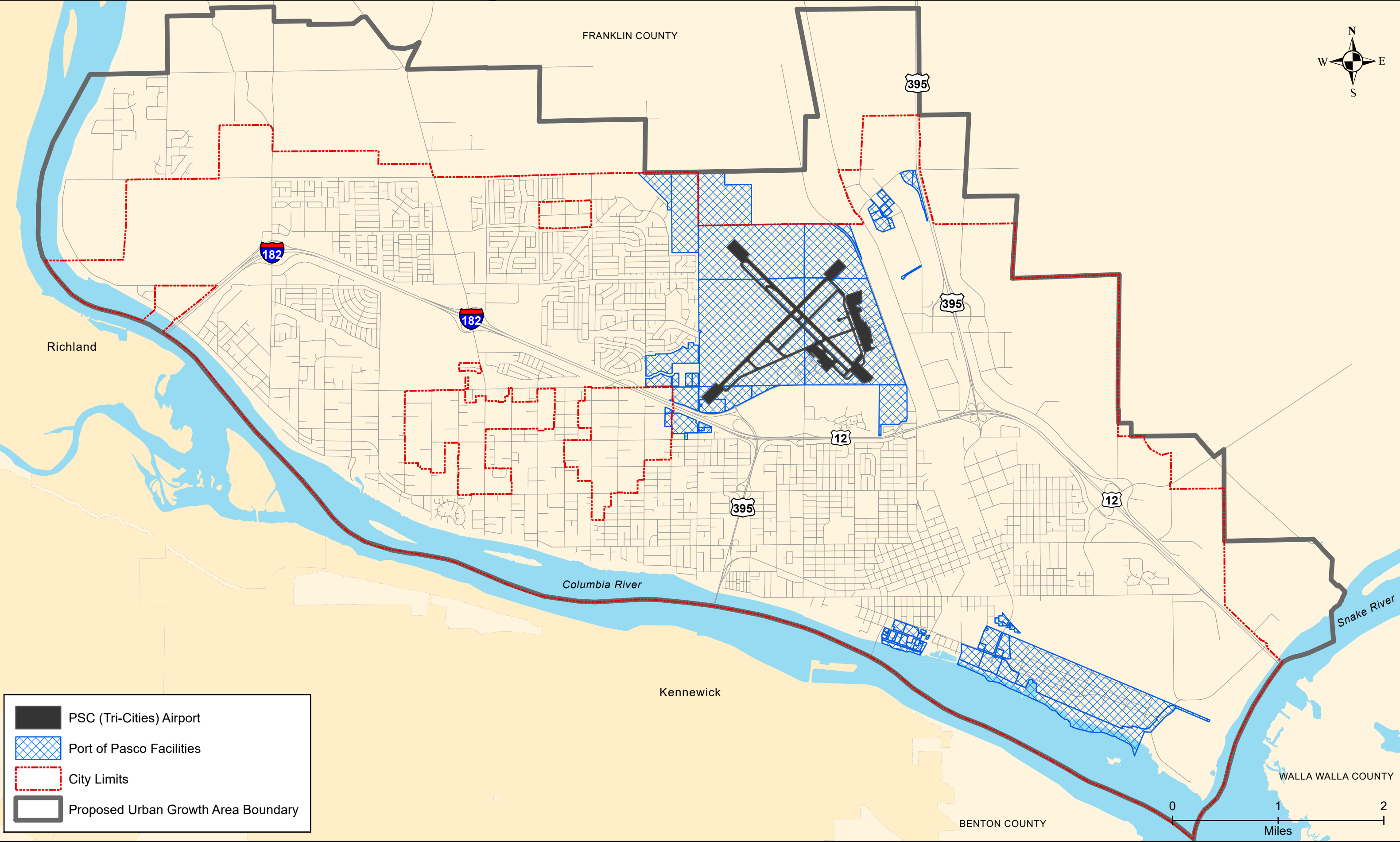












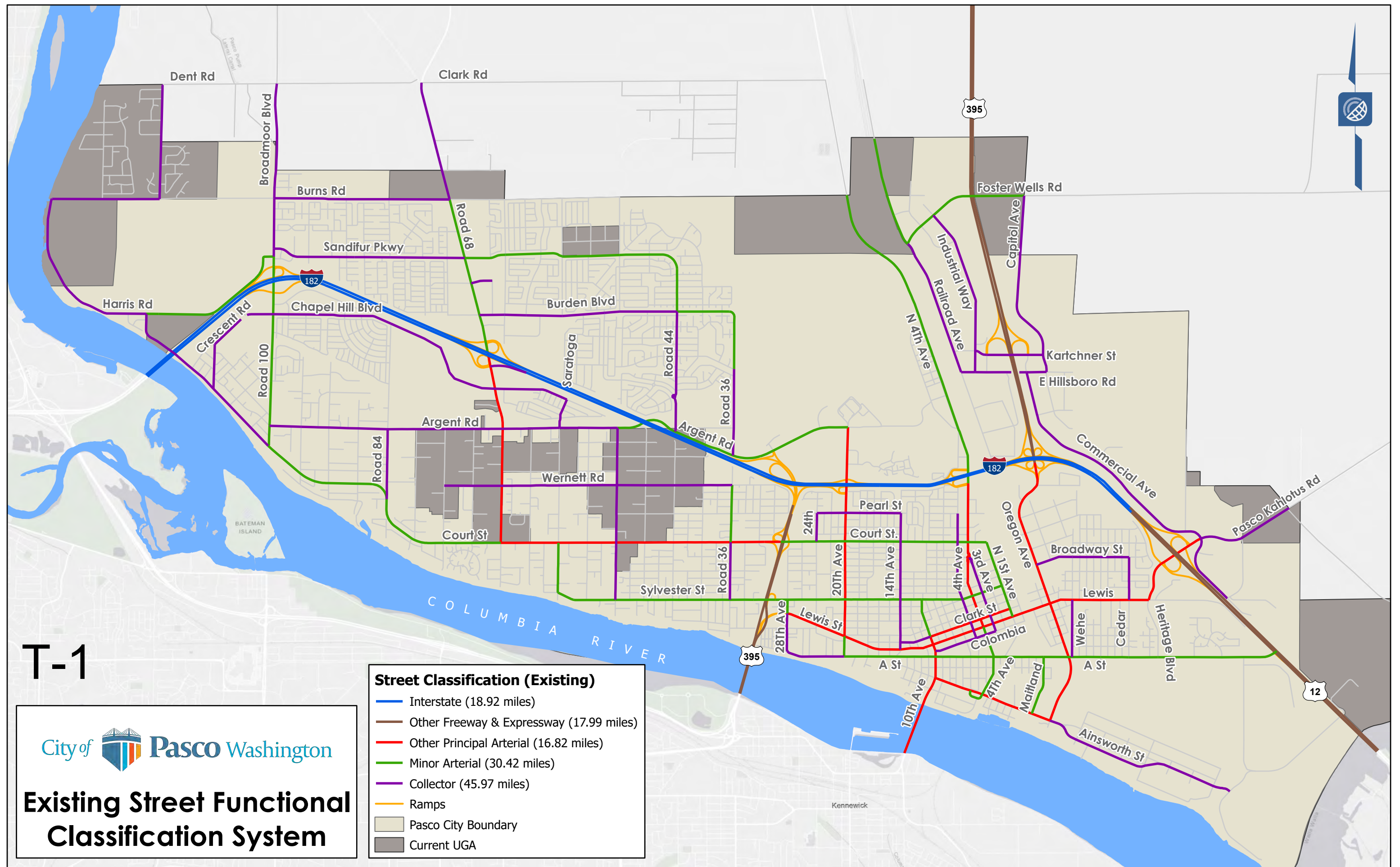
T-1



Existing Street Functional Classification System

Street Classification (Existing)

- Interstate (18.92 miles)
- Other Freeway & Expressway (17.99 miles)
- Other Principal Arterial (16.82 miles)
- Minor Arterial (30.42 miles)
- Collector (45.97 miles)
- Ramps
- Pasco City Boundary
- Current UGA



T-2



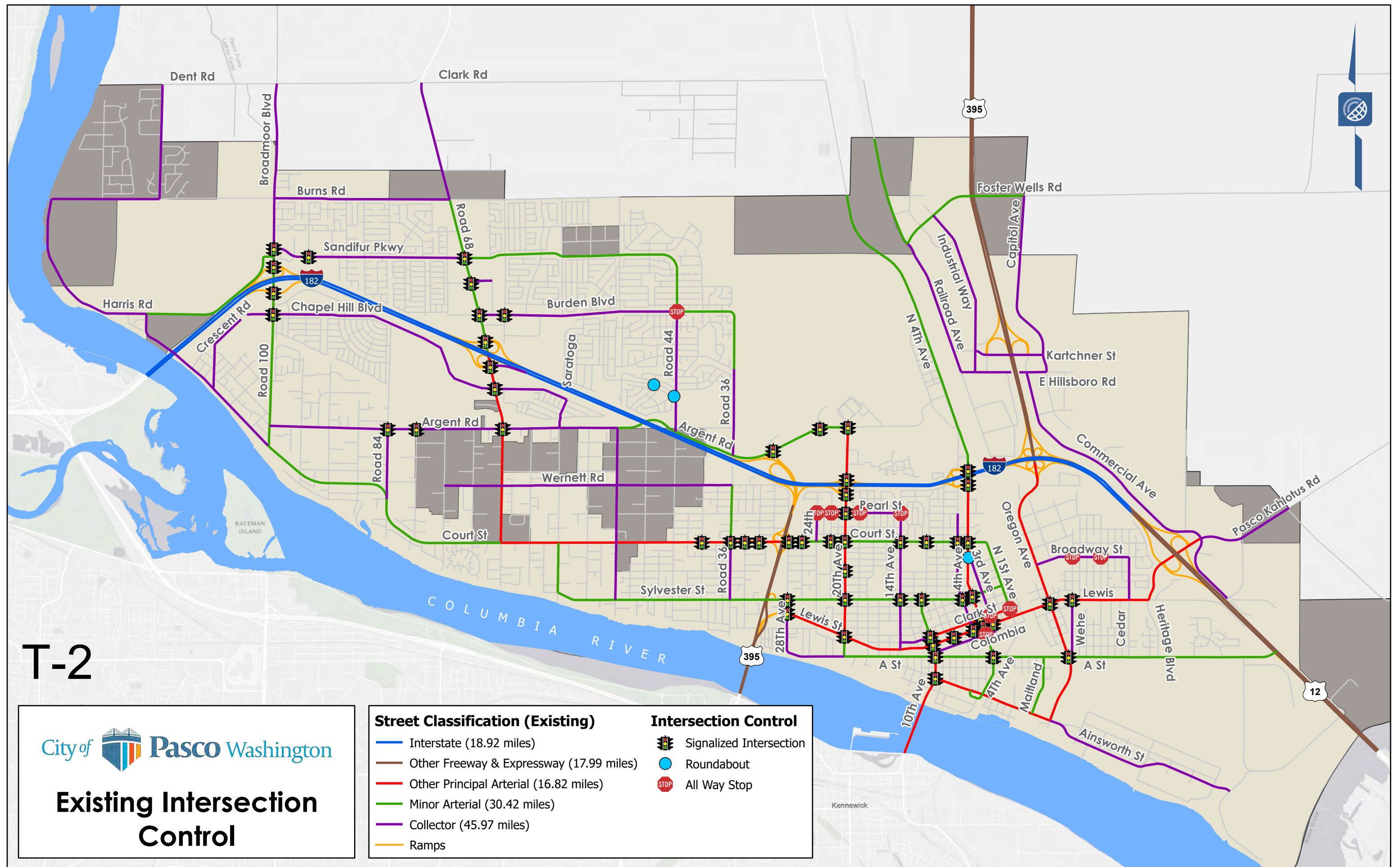
Existing Intersection Control

Street Classification (Existing)


- Interstate (18.92 miles)
- Other Freeway & Expressway (17.99 miles)
- Other Principal Arterial (16.82 miles)
- Minor Arterial (30.42 miles)
- Collector (45.97 miles)
- Ramps

Intersection Control

- Signalized Intersection
- Roundabout
- All Way Stop



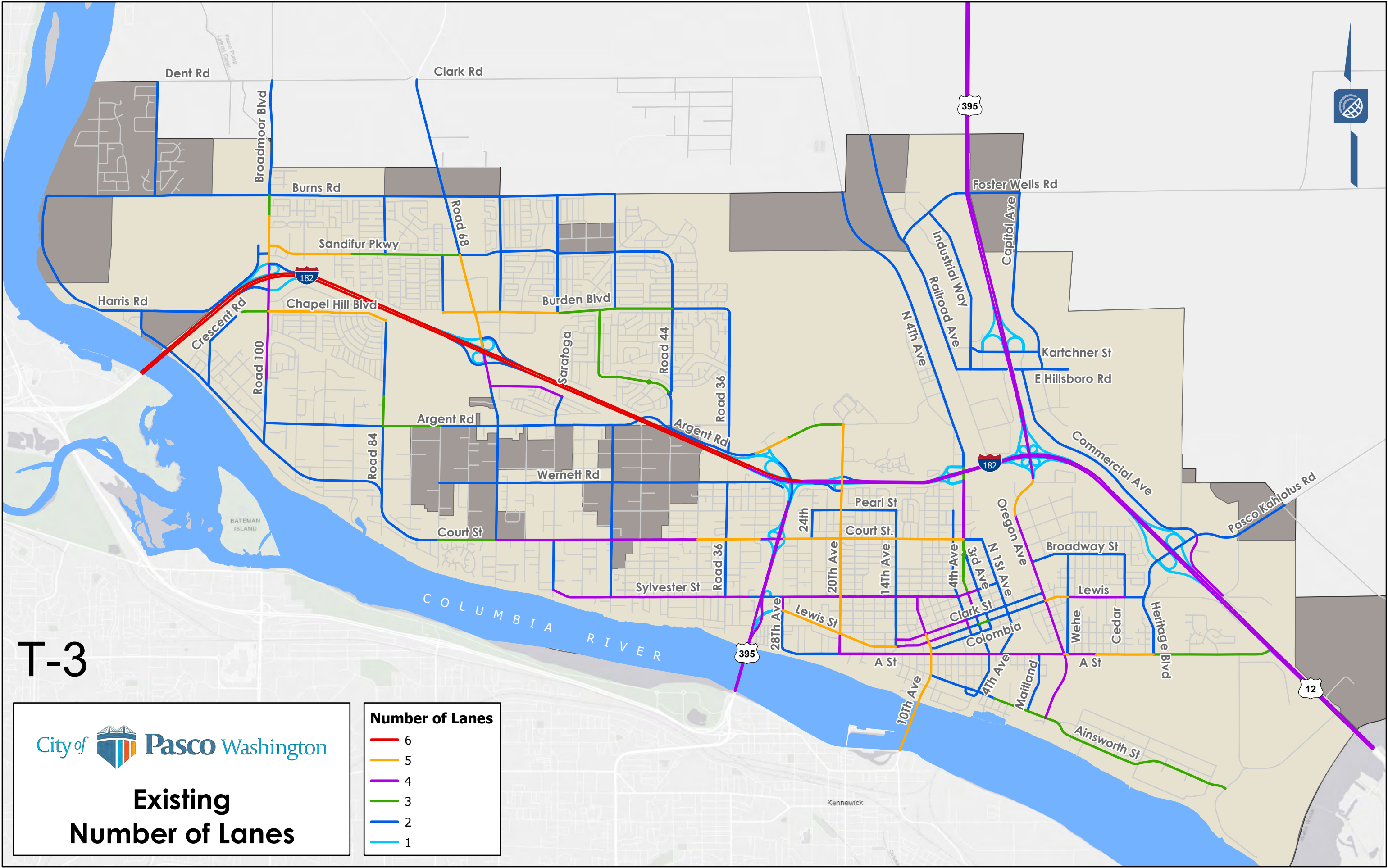
T-3




**Existing
Number of Lanes**

Number of Lanes

- 6
- 5
- 4
- 3
- 2
- 1



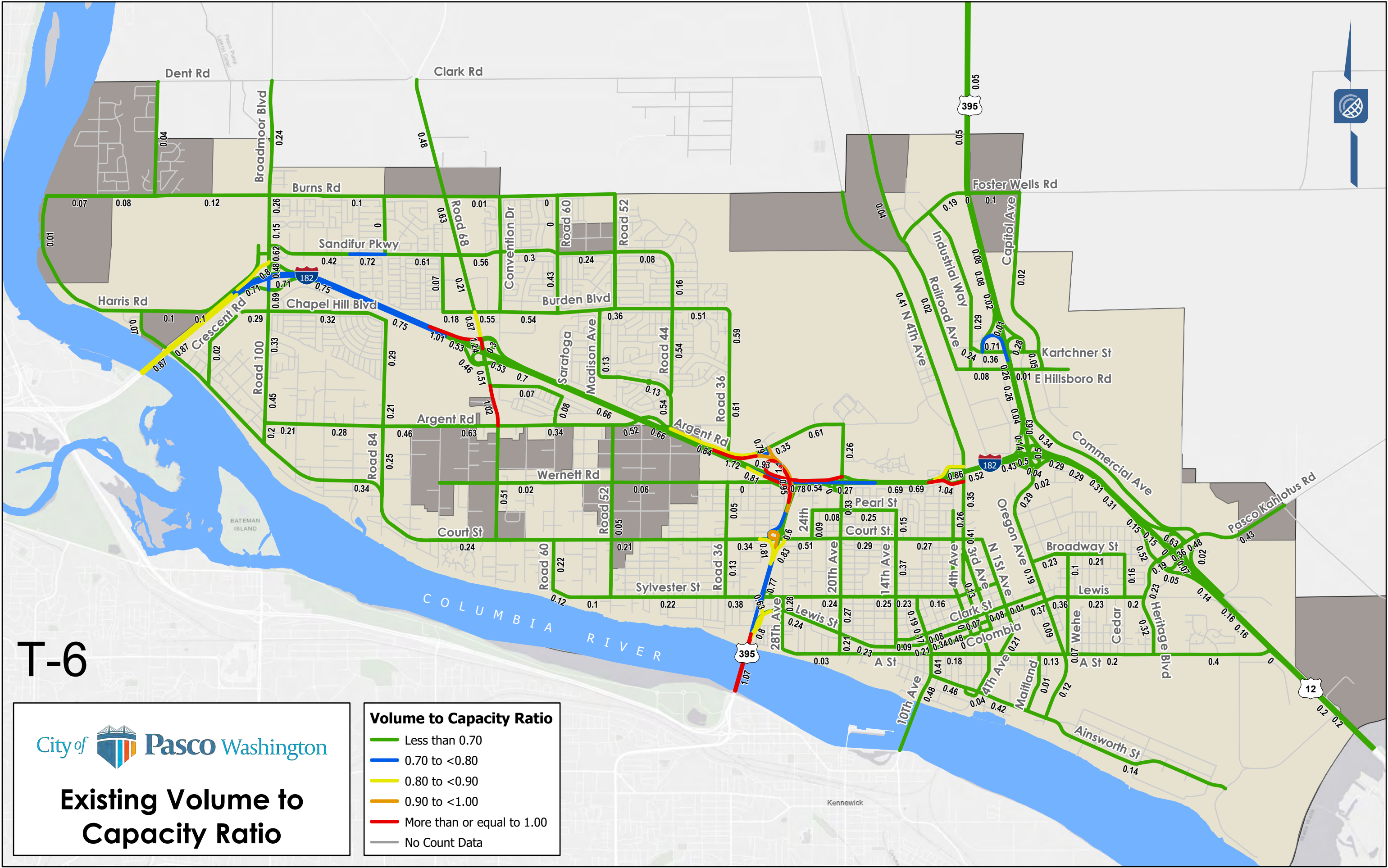
T-6



Existing Volume to Capacity Ratio

Volume to Capacity Ratio

- Less than 0.70
- 0.70 to <0.80
- 0.80 to <0.90
- 0.90 to <1.00
- More than or equal to 1.00
- No Count Data



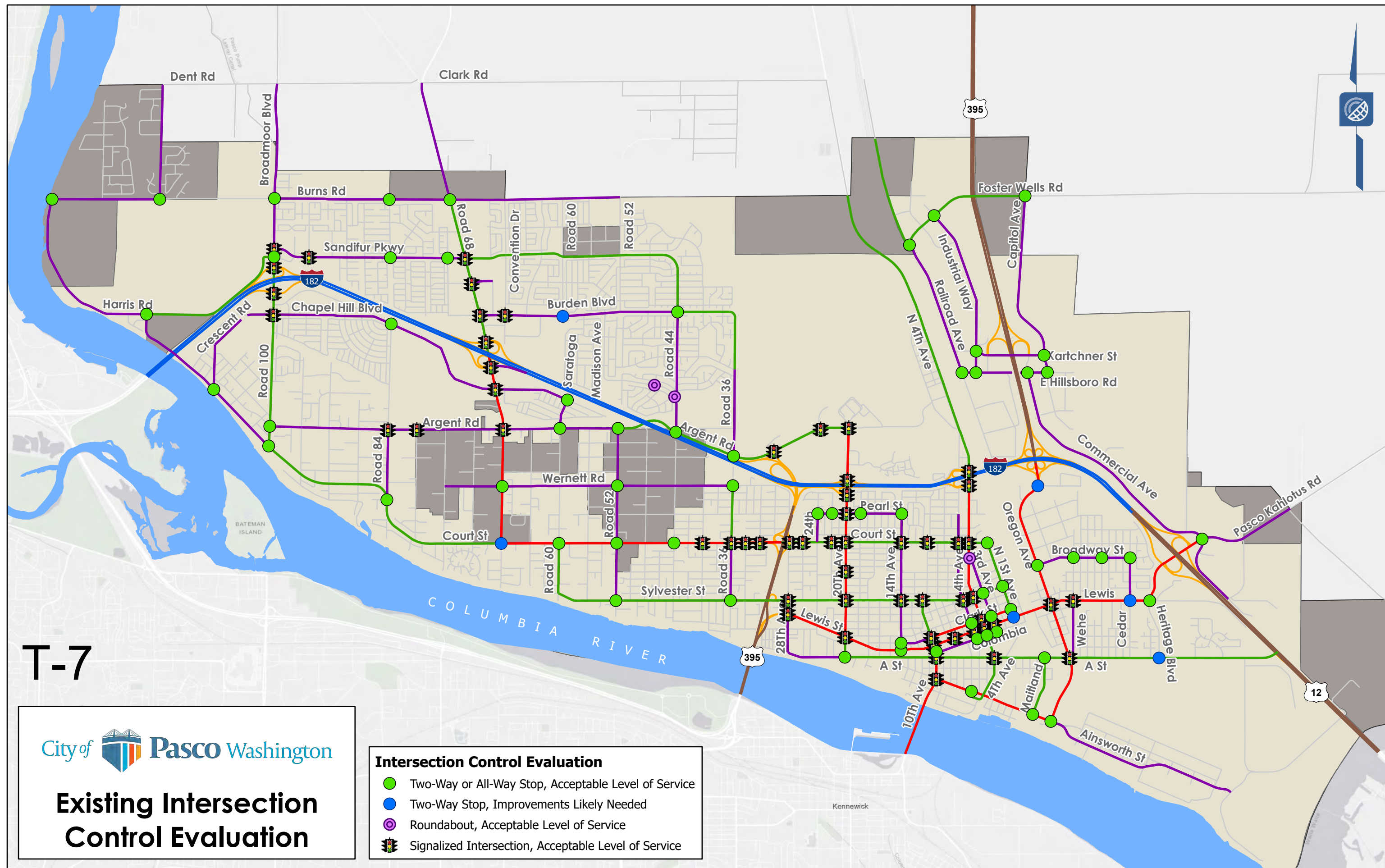
T-7



Existing Intersection Control Evaluation

Intersection Control Evaluation

- Two-Way or All-Way Stop, Acceptable Level of Service
- Two-Way Stop, Improvements Likely Needed
- Roundabout, Acceptable Level of Service
- Signalized Intersection, Acceptable Level of Service

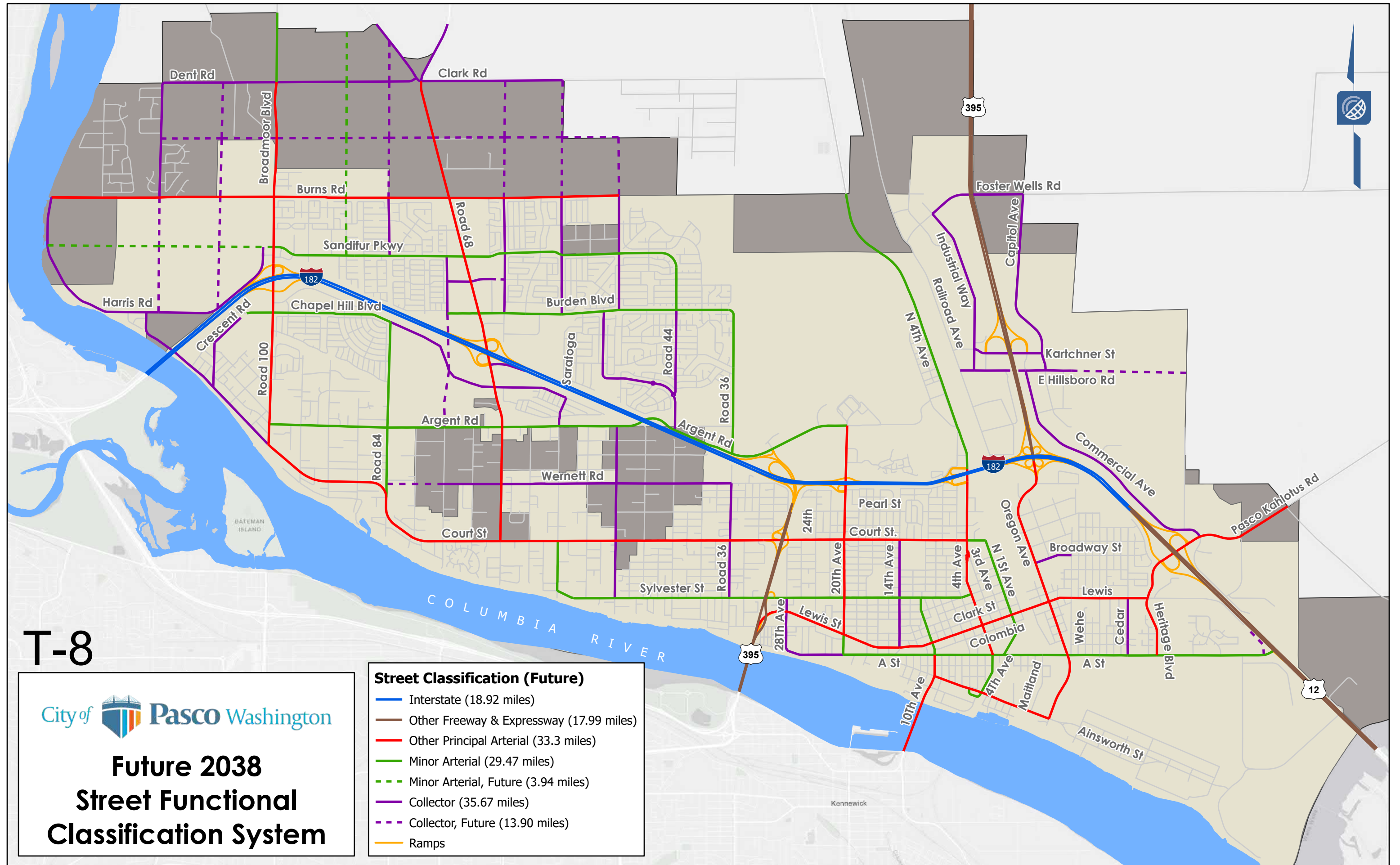


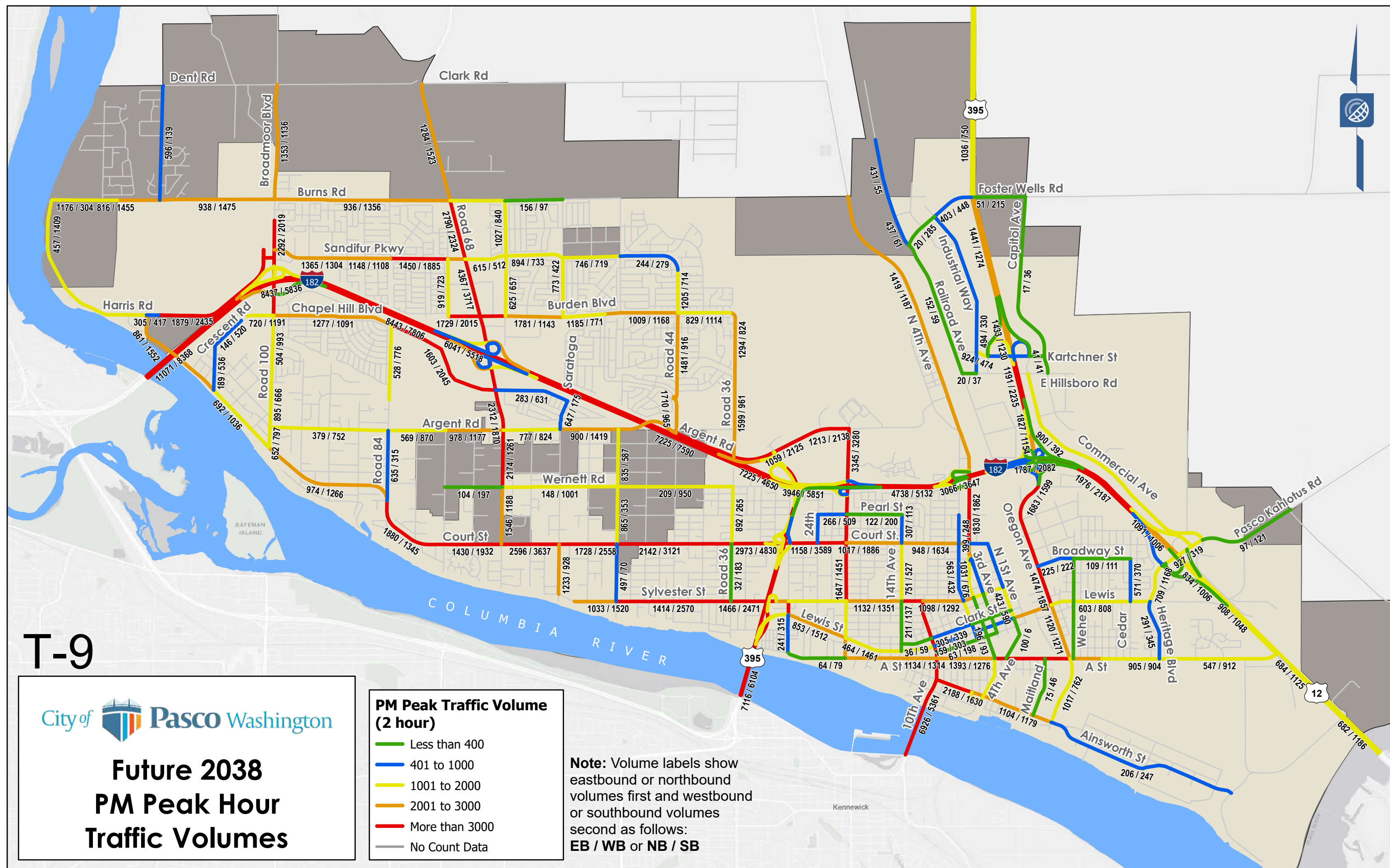
T-8



Future 2038 Street Functional Classification System

Street Classification (Future)	
—	Interstate (18.92 miles)
—	Other Freeway & Expressway (17.99 miles)
—	Other Principal Arterial (33.3 miles)
—	Minor Arterial (29.47 miles)
- - -	Minor Arterial, Future (3.94 miles)
—	Collector (35.67 miles)
- - -	Collector, Future (13.90 miles)
—	Ramps





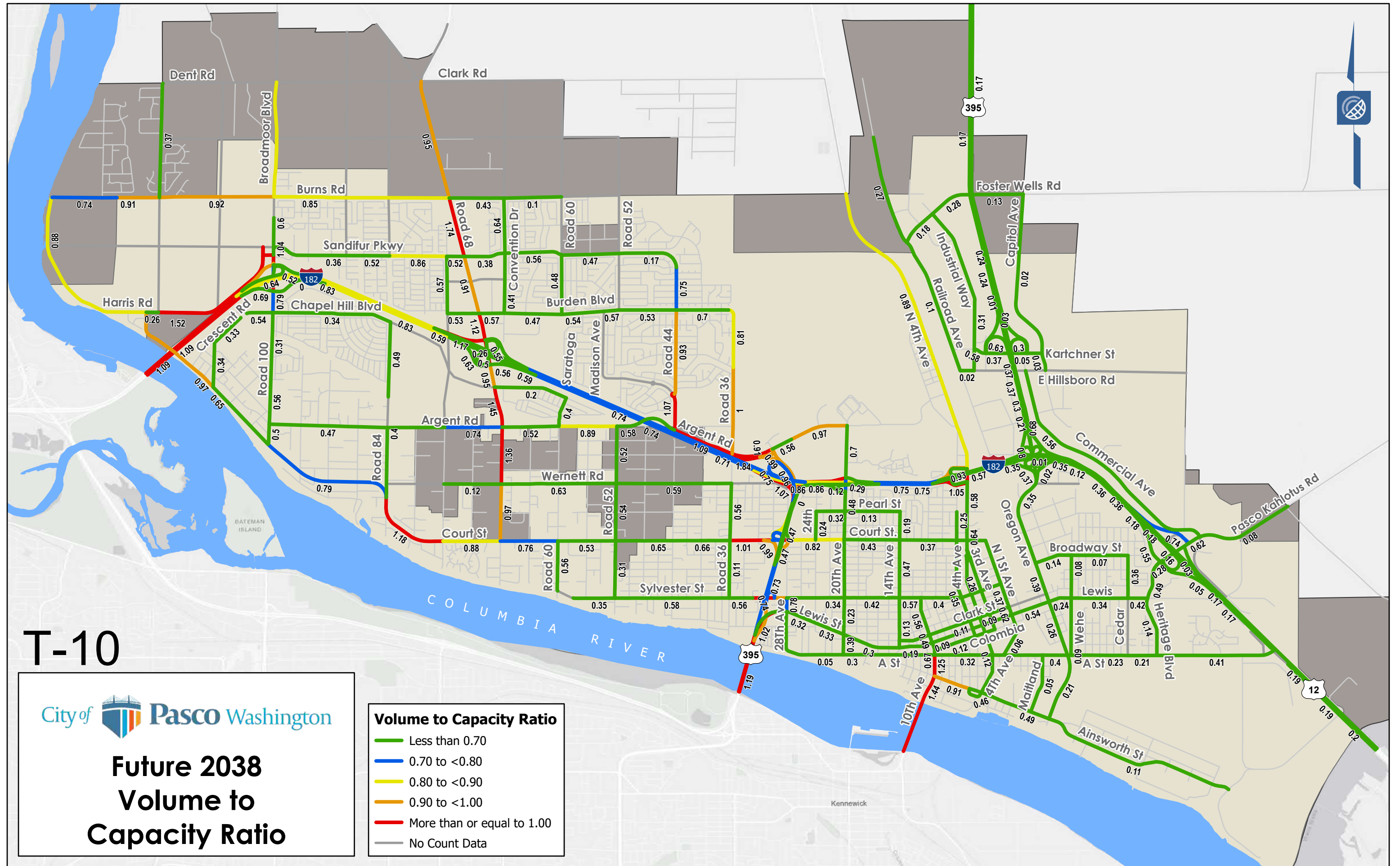
T-10



Future 2038 Volume to Capacity Ratio

Volume to Capacity Ratio

- Less than 0.70
- 0.70 to <0.80
- 0.80 to <0.90
- 0.90 to <1.00
- More than or equal to 1.00
- No Count Data



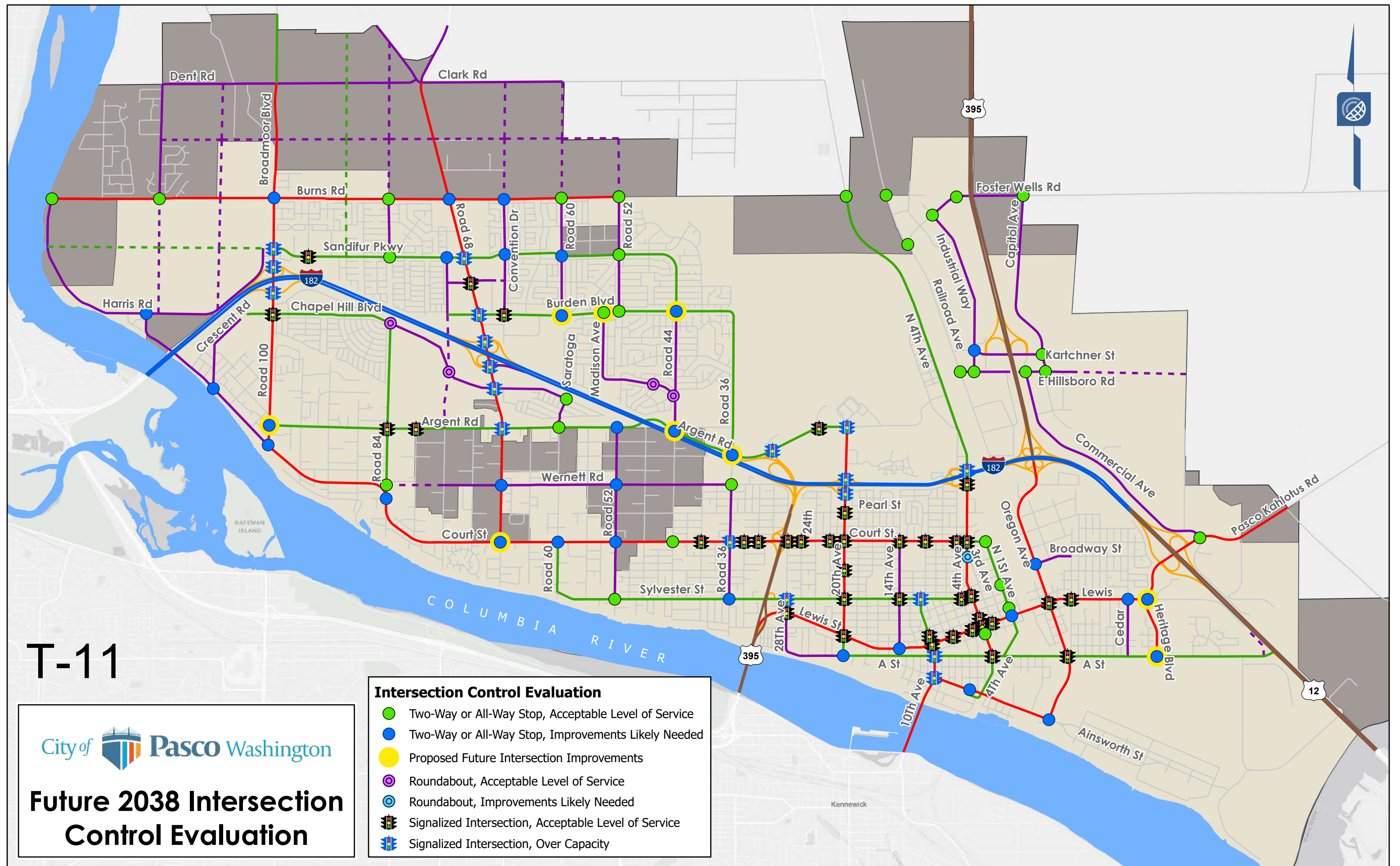
T-11



Future 2038 Intersection Control Evaluation

Intersection Control Evaluation

- Two-Way or All-Way Stop, Acceptable Level of Service
- Two-Way or All-Way Stop, Improvements Likely Needed
- Proposed Future Intersection Improvements
- Roundabout, Acceptable Level of Service
- Roundabout, Improvements Likely Needed
- Signalized Intersection, Acceptable Level of Service
- Signalized Intersection, Over Capacity



T-12



Transportation Improvements

- | | |
|--|---|
| Short Range Intersection Improvements | Long Range Intersection Improvements |
| Short Range Roadway Segment Improvements | Long Range Roadway Segment Improvements |
| Short Range New Roadway | Long Range New Roadway |

