

**OFFICE OF  
COUNTY COMMISSIONERS**

**WES CORMIER**

FIRST DISTRICT

**RANDY ROSS**

SECOND DISTRICT

**VICKIE L. RAINES**

THIRD DISTRICT

**JENNA AMSBURY**

CLERK OF THE BOARD



100 West Broadway, Suite #1  
MONTESANO, WASHINGTON 98563

PHONE (360) 249-3731

FAX (360) 249-3783

EMAIL: [commish@co.grays-harbor.wa.us](mailto:commish@co.grays-harbor.wa.us)

STATE OF WASHINGTON

**LOWER SATSOP RIVER  
EROSION – FLOOD MITIGATION – RELIC CHANNEL**

**Background:**

1. Reducing flood impacts in the Lower Satsop is complicated (Hwy 12 to Chehalis R.).
2. Lower Satsop is an active, dynamic, and unpredictable flood environment where the river wants to frequently move, shift, and change course [It is not a stable and predictable environment.]
3. Lower Satsop has many parties and interests, each with compelling and legitimate needs, including
  - a. Port of Grays Harbor -- Ensure protection and continuity of Port water supply.
  - b. WDFW – Protect and restore fish and wildlife habitat.
  - c. GHC -- Protect and ensure safety of Keyes Road.
  - d. GHCD -- Represent and help landowners.
  - e. Regulatory Agencies -- Ensure conformity with applicable laws.
4. GHC, WDFW, and others have independently pursued flood hazard reduction in the Lower Satsop in past several years. This has proved challenging (and sometimes contentious) due to lack of continuing awareness for how one's project might adversely impact another's interests, lack of momentum, and multiple interests.

**Looking Forward:**

5. GHC (supported by Chehalis River Basin Flood Authority) has recently stepped-in to serve as central coordinator and convener of Lower Satsop projects. Goal is to ensure communication across Lower Satsop projects is clear, consistent, and constant. [Goal is not for GHC to do all projects.]
6. In this role, GHC will be initiating a visioning/planning process (spring/summer 2018) to surface issues, identify near-term and longer-term actions, and put a visible plan of action into place (projects, sequence, timelines, funding, etc.). Goal is flood hazard reduction that works toward the interests of Lower Satsop parties (not against those interests).

**Further Information:**

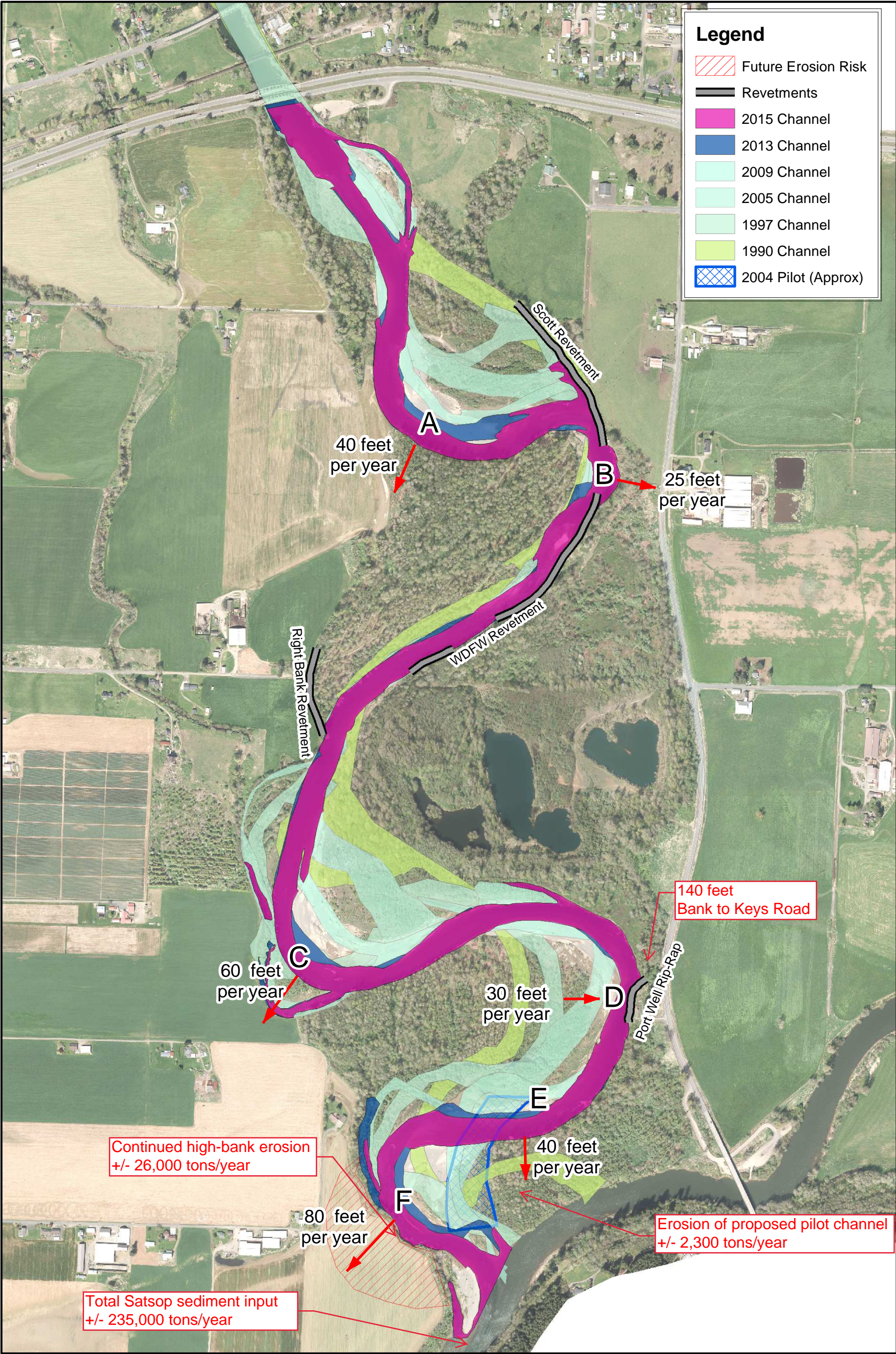
**Vickie L. Raines**

Commissioner, Grays Harbor County  
Chair, Chehalis River Basin Flood Authority  
Chair Chehalis Basin Board

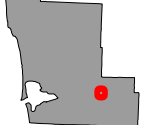
360/249.3731 [vraines@co.grays-harbor.wa.us](mailto:vraines@co.grays-harbor.wa.us)

**Scott Boettcher**

Staff, Chehalis River Basin Flood Authority  
360/480-6600 [scottb@sbgh-partners.com](mailto:scottb@sbgh-partners.com)



Grays Harbor County, WA



**Figure 7**  
**Recent Erosion Areas**

0 520 1,040 Feet

Scale: 1:8,000  
NAD83 Washington  
South ft

28 Jun 2017  
**WATERSHED**  
SCIENCE & ENGINEERING