

PROJECT TIMELINE

TASK	QUESTION	COMMUNITY ENGAGEMENT	OUTCOMES
Build a Shared Understanding	What is the narrative behind this process? How do different stakeholders' narratives align or differ? What is the shared narrative?	<ul style="list-style-type: none">• Interviews with Agencies and Property Owners• Advisory Committee Meeting	Challenges and Opportunities Map
Explore Opportunities	What is the universe of possible solutions? Which solutions are the most equitable? What set of projects would address the widest range of issues?	<ul style="list-style-type: none">• Community Workshop• Advisory Committee Meeting	Set of Potential Programs and Projects
Action Plan	What is the prioritized list of projects? How do we fund and plan for them? Who is responsible?	<ul style="list-style-type: none">• Community Workshop• Advisory Committee Meeting	Lower Satsop Action Plan

COMMUNITY ENGAGEMENT OPPORTUNITIES

COMMUNITY MEETING #1

September 5, 2018 | 6:30 - 8:30 PM
Montesano City Hall
112 N Main St, Montesano, WA

The project team will engage the community in a workshop that is both educational and interactive. This is an opportunity to ask the community about the different types of solutions that could be implemented, what situations they see as most effective, and what the perceived repercussions are. This meeting will include an exercise to place these different solutions onto a map where they think they would be appropriate and work most effectively.

COMMUNITY MEETING #2

November 7, 2018 | 6:30 - 8:30 PM
Montesano City Hall
112 N Main St, Montesano, WA

A second community workshop will be held to prioritize the list of projects. We will engage the community in an exercise where they have a budget and get to decide which projects to fund. This provides an opportunity to articulate where they think the County should focus their financial resources and appreciate the limits of the County budget and the need to prioritize projects. This collaborative setting is often much more effective solutions than a traditional public meeting.

WANT TO LEARN MORE NOW?

You can find additional information or reach out to the project team in any of the following ways:

- Learn more about the project and other previous efforts at the project website: https://www.ezview.wa.gov/site/alias__1973/37259/lower-satsop-planning-process.aspx
- Reach out to the project team through email: ghcdwater@gmail.com
- Give the project team a call: (360) 249-8532

LOWER SATSOP RIVER
PLANNING

FACT SHEET

August 2018



OVERVIEW

Flooding and erosion are creating real impacts around the Lower Satsop River. The Lower Satsop is a dynamic environment where the river has been actively shifting - eroding banks and depositing gravel bars. Erosion and flooding are impacting farmland, private property, and public infrastructure.

For more than a decade, studies have been conducted and plans developed to try to reduce erosion and flood risk. Individual property owners have taken actions to try to protect their land. No silver bullet solution has been identified. There are multiple drivers of flooding and erosion and multiple areas that are impacted. Projects that prevent erosion in one place may make it worse in another. Projects that may reduce flooding may also impact existing infrastructure or habitat. The different perspectives of various stakeholders have come into conflict.

Despite these challenges, progress is being made. Funding has been provided by Washington State through the Chehalis River Basin Flood Authority and other programs to support planning and implementation of projects to reduce erosion and flood risk as well as enhancing natural habitat. Grays Harbor County has stepped up to act as a convener to bring different interest groups together to coordinate efforts and develop a long-term plan for the Lower Satsop River. The County is supported in this effort by the Grays Harbor Conservation District to increase engagement of local property owners. The County and Conservation District will help facilitate clear and frequent communications about Lower Satsop projects and ensure that projects work together and minimize conflicts.

The purpose of this planning effort is to build consensus around an action plan for the Lower Satsop River that achieves shared goals. The action plan will include a prioritized list of projects that address the different interests of the various stakeholders and includes short-term and long-term needs.



Grays Harbor
Conservation
District

your window to healthy lands



1854

PREVIOUS EFFORTS

Previous studies of the Satsop River have examined the dynamics of the river. The studies have shown the long history of dramatic shifts of the river channel. It appears that this has long been a dynamic floodplain. Past studies include:

- Salmon and Steelhead Habitat Limiting Factors Report (2001)
- USACE Study (2002-2004)
- WSE Rip Rap Removal Project (2013)
- WDFW Lower Satsop Relic Channel (2013-2017)

Additionally, these studies have identified a number of factors that may be making flooding and erosion worse (see map below).

Flooding & Erosion Factors

- A. Clearing and development of upper watershed – reduces absorption of rain and increases flood flows
- B. Down-cutting of river in upper watershed decreases connectivity with floodplain, decreases storage of flood waters
- C. Constriction of river at the bridge crossings
- D. Revetments hold bank in some locations, but contribute to erosion at others
- E. Infrastructure and development have limited the connection between the floodplain and the river
- F. Movement of gravel and sediment has decreased the capacity of the river to hold flood waters in some areas

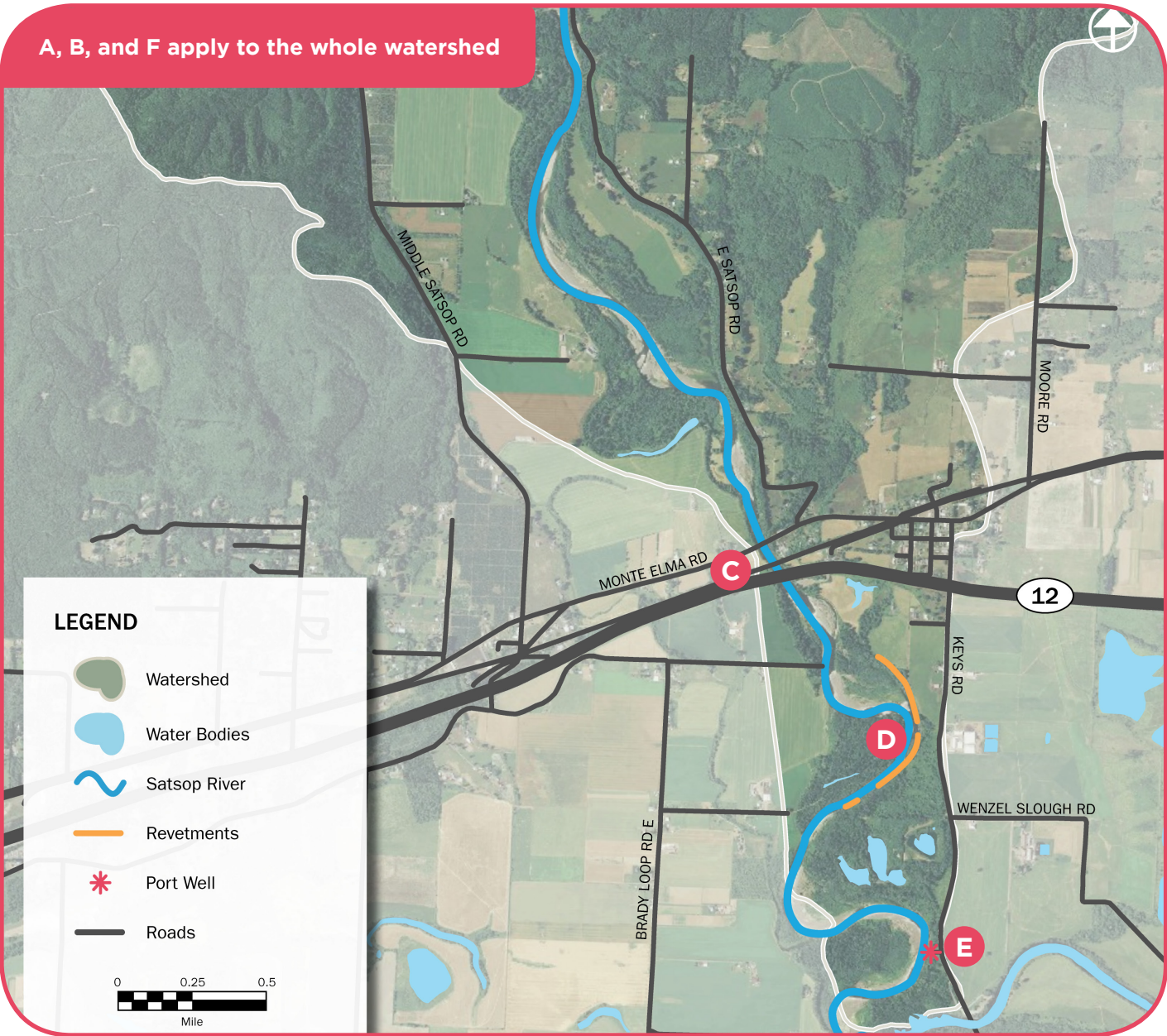
OUR APPROACH

We understand that there have been a number of studies and planning efforts for the Lower Satsop River in the recent past. This project will build on this previous work and brings greater capacity to an issue that requires a collaborative process in order to determine long-term solutions. In our approach we aim to accomplish the following:

- Understand from property owners what they believe would be the most effective solutions.
- Expand the universe of solutions to include features that could be implemented upstream of the Olympic Highway bridge.
- Think about solutions in the long-term and discuss trade-offs with the community.
- Establish a set of projects that can be completed in the short- and mid- term that will address the wide range of issues faced by the community living along the Lower Satsop River.

The project will engage the Lower Satsop Group as an advisory committee to help guide the project and provide voices for the wide range of voices that need to be heard during this project.

Satsop River Flooding & Erosion Factors



KEY FEATURES AND CONCERNS

Loss of Farmland and Soils

Productive farm land is being lost to erosion.



Flooding

Damages property and creates life safety risk.



Keys Road

Important public infrastructure connection becomes impassable during floods.



Satsop River Migration (1938-2015)

