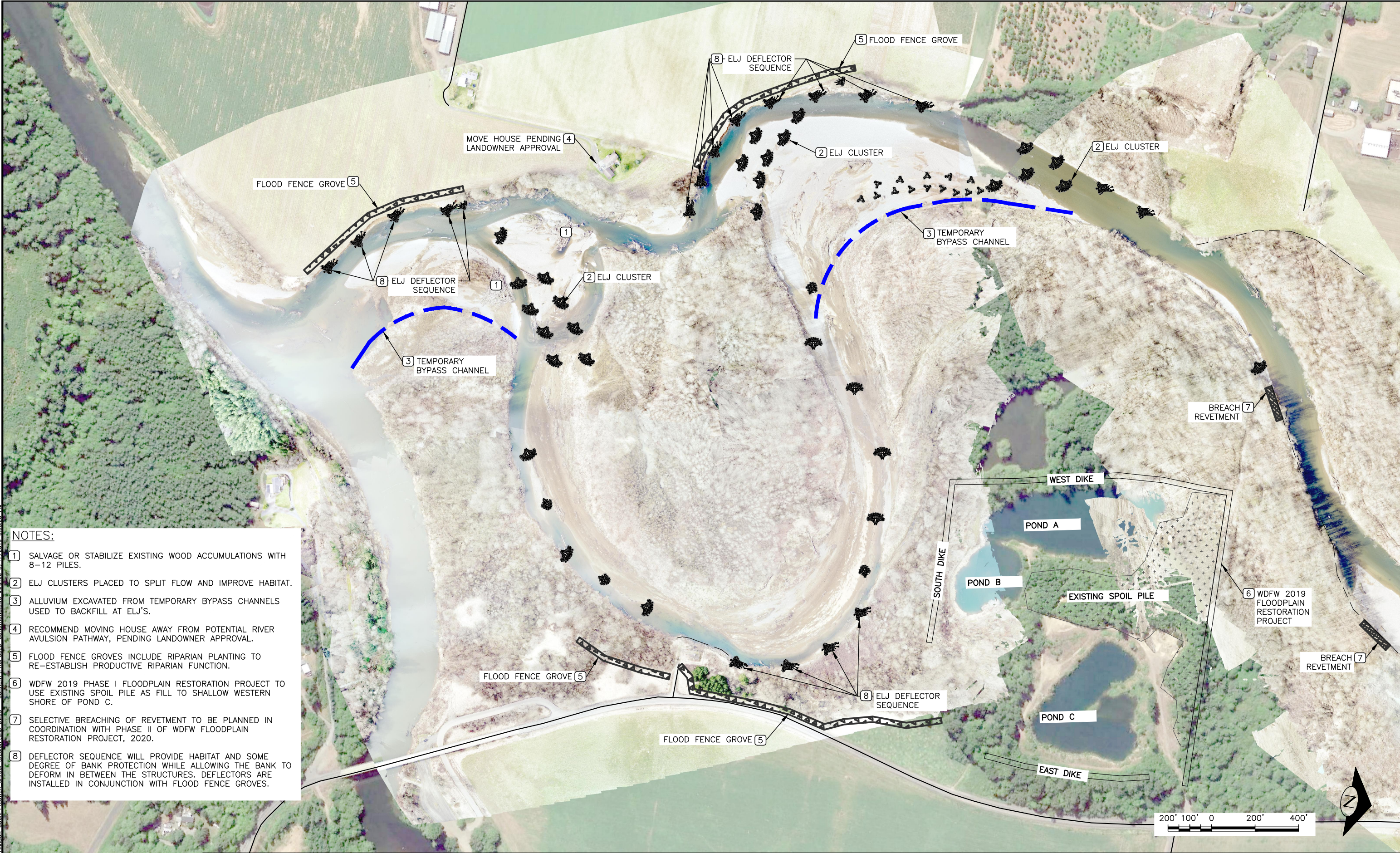
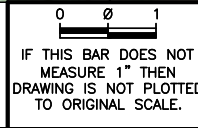


N:\PROJECTS\GRAYS HARBOR COUNTY\LOWER SATSOP\DESIGN\CAD DWGS - CURRENT\PROPOSED-CONDITIONS.DWG, Microsoft Word 5/17/2019 3:38:28 PM



- NOTES:
- 1 SALVAGE OR STABILIZE EXISTING WOOD ACCUMULATIONS WITH 8-12 PILES.
 - 2 ELJ CLUSTERS PLACED TO SPLIT FLOW AND IMPROVE HABITAT.
 - 3 ALLUVIUM EXCAVATED FROM TEMPORARY BYPASS CHANNELS USED TO BACKFILL AT ELJ'S.
 - 4 RECOMMEND MOVING HOUSE AWAY FROM POTENTIAL RIVER AVULSION PATHWAY, PENDING LANDOWNER APPROVAL.
 - 5 FLOOD FENCE GROVES INCLUDE RIPARIAN PLANTING TO RE-ESTABLISH PRODUCTIVE RIPARIAN FUNCTION.
 - 6 WDFW 2019 PHASE I FLOODPLAIN RESTORATION PROJECT TO USE EXISTING SPOIL PILE AS FILL TO SHALLOW WESTERN SHORE OF POND C.
 - 7 SELECTIVE BREACHING OF REVETMENT TO BE PLANNED IN COORDINATION WITH PHASE II OF WDFW FLOODPLAIN RESTORATION PROJECT, 2020.
 - 8 DEFLECTOR SEQUENCE WILL PROVIDE HABITAT AND SOME DEGREE OF BANK PROTECTION WHILE ALLOWING THE BANK TO DEFORM IN BETWEEN THE STRUCTURES. DEFLECTORS ARE INSTALLED IN CONJUNCTION WITH FLOOD FENCE GROVES.



| NAME OR INITIALS AND DATE | | GEOGRAPHIC INFORMATION | |
|---------------------------|---------|------------------------|--------------|
| DESIGNED | RLE, MS | LATITUDE | 47°03'49"N |
| CHECKED | RLE | LONGITUDE | 123°29'29"W |
| DRAWN | MS, GM | TN/SC/RG | T18W/S12/R7W |
| CHECKED | RLE | DATE | 2/14/2019 |

LOWER SATSOP ASSESSMENT

PROPOSED CONDITIONS –
SITE 1

May 17, 2019 PRELIMINARY DESIGN NOT FOR CONSTRUCTION



- NOTES:
- 1 ELJ PLACED TO PROMOTE FLOW IN RELICT FLOODPLAIN CHANNEL.
 - 2 ALLUVIUM EXCAVATED FROM TEMPORARY BYPASS CHANNELS USED TO BACKFILL AT ELJ'S.
 - 3 FLOOD FENCE GROVES INCLUDE RIPARIAN PLANTING TO RE-ESTABLISH PRODUCTIVE RIPARIAN FUNCTION.
 - 4 WDFW 2019 PHASE I FLOODPLAIN RESTORATION PROJECT TO USE EXISTING SPOIL PILE AS FILL TO SHALLOW WESTERN SHORE OF POND C.
 - 5 SELECTIVE REVETMENT BREACHING TO BE PLANNED IN COORDINATION WITH PHASE II OF WDFW FLOODPLAIN RESTORATION PROJECT, 2020.
 - 6 DEFLECTOR SEQUENCE WILL PROVIDE HABITAT AND SOME DEGREE OF BANK PROTECTION WHILE ALLOWING THE BANK TO DEFORM IN BETWEEN THE STRUCTURES. DEFLECTORS ARE INSTALLED IN CONJUNCTION WITH FLOOD FENCE GROVES.

N:\PROJECTS\GRAYS HARBOR COUNTY\LOWER SATSOP\DESIGN\CAD DWGS - CURRENT\PROPOSED-CONDITIONS.DWG Mirrored 5/17/2019 3:38:33 PM

0 1
IF THIS BAR DOES NOT
MEASURE 1" THEN
DRAWING IS NOT PLOTTED
TO ORIGINAL SCALE.



| NAME OR INITIALS AND DATE | GEOGRAPHIC INFORMATION |
|---------------------------|------------------------|
| DESIGNED RLE MS | LATITUDE 47°03'49"N |
| CHECKED RLE | LONGITUDE 123°29'29"W |
| DRAWN MS GM | TN/SC/RG T18W/S12/R7W |
| CHECKED RLE | DATE 2/14/2019 |

LOWER SATSOP ASSESSMENT

PROPOSED CONDITIONS -
SITE 2

May 17, 2019 PRELIMINARY DESIGN NOT FOR CONSTRUCTION