

Search  

## 2019-21 Capital Budget

### SHB 1102 (S-4578.1) Prop Compromise (04-27-2019)

#### Session

- 2019-21 Capital Budget
- 2017-19 Capital Budget -- 2019 Supple...
- 2017-19 Capital Budget -- 2018 Supple...


#### Budget Version(s)

- SHB 1102 (S-4578.1) Prop Compromis...
- Senate Committee (04-03-2019)
- House Floor (04-03-2019)

#### All Projects / Supplemental Changes

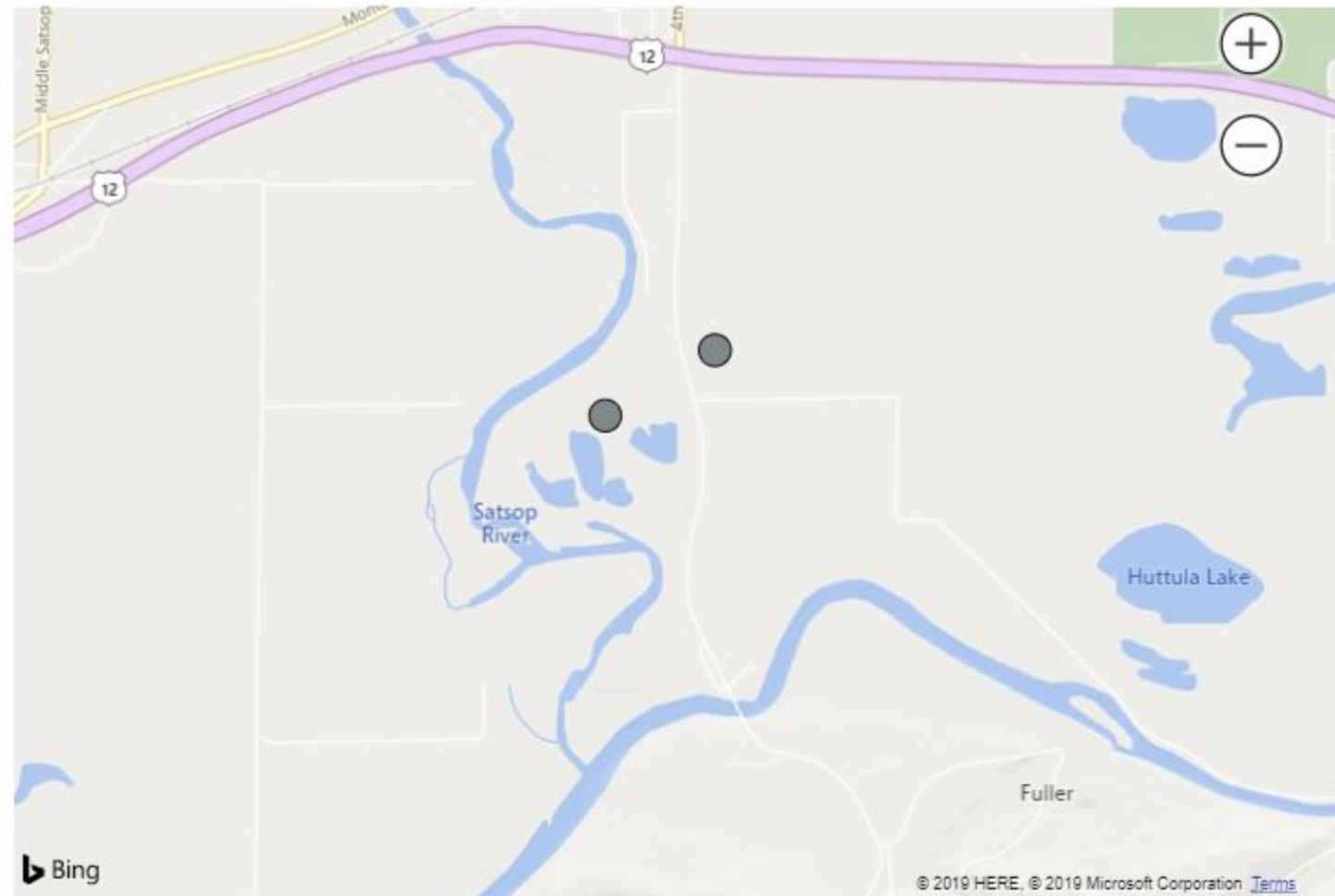
- ☐ Select all
- ☒ Biennial Budget

#### Agencies

All 

#### Projects

All 



#### Leg District

- 001
- 002
- 003
- 004
- 005
- 006
- 007
- 008
- 009
- 010
- 011
- 012
- 013
- 014
- 015
- 016
- 017
- 018
- 019

Leg Dist	Agency	Project	Description	New Approp
019	Ecology	2019-21 Chehalis Basin Strategy (40000209) - Flood Authority Local Projects-Grays Harbor County (40000272)	The Chehalis River basin is at a crossroads. In the last 30 years alone, five of the largest floods in the Basin's recorded history have occurred. Not taking action could cost families and communities \$3.5 billion in flood and related damages over the next 100 years. It could cost even more with climate change impacts. Also, salmon and other aquatic species habitat has been degraded and survival of spring Chinook populations severely threatened. In 2016, the Legislature established the Office of Chehalis Basin in Ecology to aggressively pursue and oversee the implementation of an integrated Chehalis Basin Strategy to reduce long-term flood damage and restore aquatic species habitat in the Basin. Ecology requests funding for ongoing development and implementation of the Chehalis Basin Strategy (State Building Construction Account).	185
019	Rec and Conservation Funding Board	2019-21 - Washington Coastal Restoration Initiative (40000011) - Lower Satsop River Restoration Project-Phase 2 (91000939)	Funding is provided for coastal restoration projects that enrich tidal habitat and forest ecosystems, reduce invasive species and promote native plant and seed production, reconnect wetlands, and improve salmon access and rearing potential on the Washington coast.	1,429